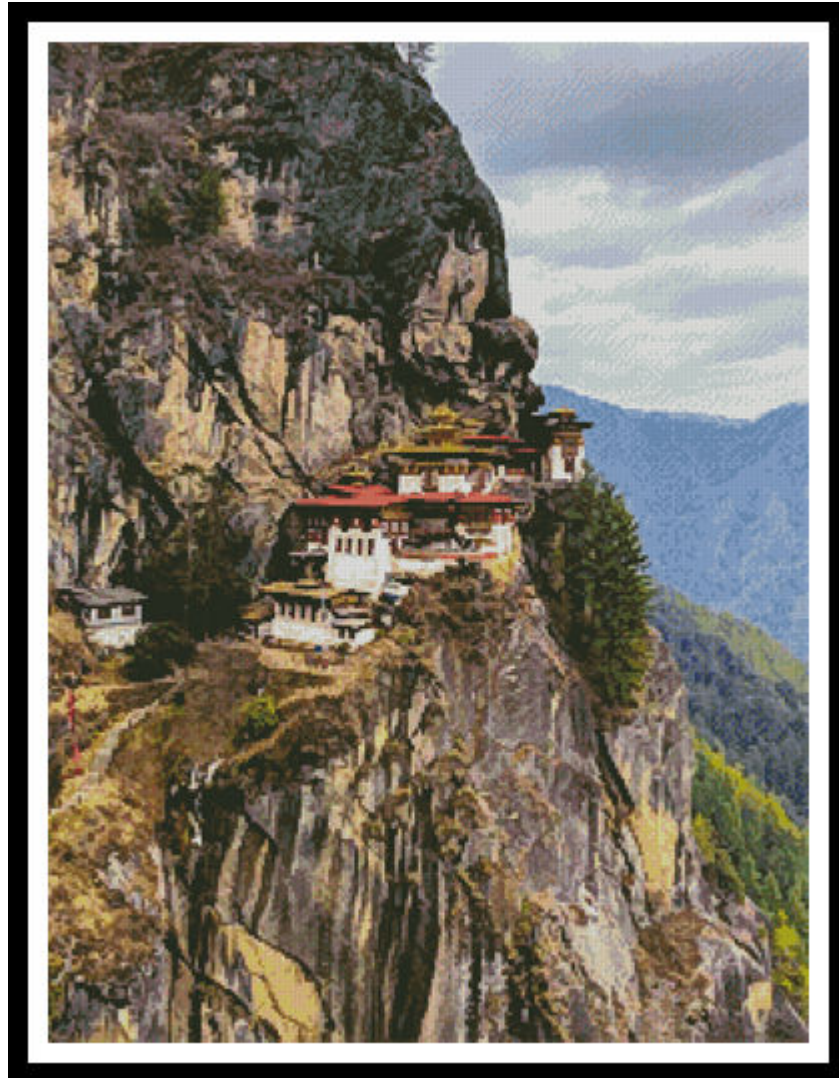


# Artecy

## CROSS STITCH

### Tiger's Nest Monastery



\* Original image© Mike Swigunski - Unsplash  
Cross Stitch Design by Tereena Clarke.

Completed Size = 228w x 300h Stitches

14 Count, 16.5w x 21.5h inches (42cm x 55cm)

16 Count, 14.5w x 19h inches (37cm x 48cm)

18 Count, 13w x 17h inches (33cm x 43cm)

Uses 78 DMC cotton colours. Only full cross stitches are used in this pattern.

# *Pattern Instructions*

\* This pattern can be worked on any fabric type, colour or count you prefer. To work out the size of the finished article, take the number of stitches wide and high and divide it by the count of your fabric (e.g. 14,16,18 count aida etc) to get the size in inches. Times it by 2.54 to get centimetres. We have the sizes in inches shown on the previous page. Also leave at least a few inches of fabric around each side of the design to assist in framing. The higher the fabric count the smaller the completed project will be.

\* To put the pattern together look in the top and bottom corners. The page numbers in brackets show which page number it joins up to. Page 1 always starts at the top left hand side of the pattern. Our pages also have a shaded grey section. This indicates a 3 row overlap from adjoining pages to assist with reading the pattern. PLEASE DO NOT RESTITCH THIS AREA.

\* You should begin at the centre of the pattern. To find the centre of the pattern it is just a matter of laying the pattern out and locating the arrows at the top and left hand side of the patterns, they are determined by dividing the stitch numbers wide and high in half. Where the two points meet in the middle, that is the centre.

\* If you need more assistance to find the middle of your pattern or the page layout, please see the notes section on the colour symbol chart. The easiest way to stitch this pattern, as it has multiple pages, is to stitch one page at a time.

\* We suggest using two strands of floss for each stitch and one strand for backstitching if the pattern calls for it.

We hope you enjoy stitching our pattern.

Thanks and Best Wishes  
Tereena Clarke

Artecy Cross Stitch  
Po Box 3474  
Tuggerah, NSW 2259  
Australia

Websites: [www.artecy.com](http://www.artecy.com) and [www.artecyshop.com](http://www.artecyshop.com)  
Email: [artecy@artecy.com](mailto:artecy@artecy.com) or [stitch@artecyshop.com](mailto:stitch@artecyshop.com)

\*Patterns are strictly for personal use only. It is against our copyright to make kits for sale from our designs or to sell, copy or redistribute this pattern in any form. You may not upload our patterns to any internet forums or groups or any other website. You may make 1 copy of this pattern for a working copy for your own personal use if needed.



















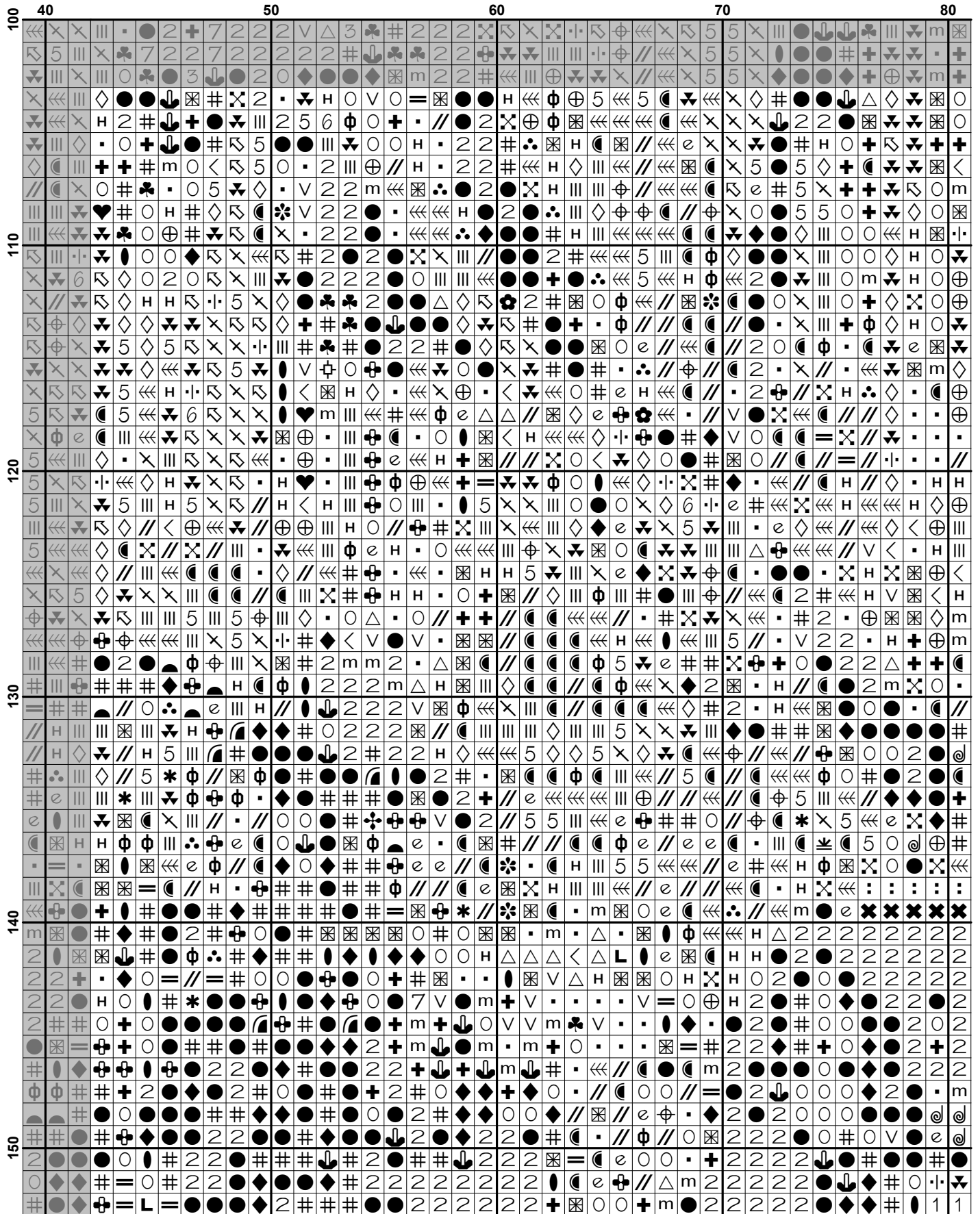
		80		90		100		110		120
50	m	7	2	2	m	3	+	+	+	+
	7	7	2	2	2	2	2	2	2	2
	2	2	2	2	2	2	2	2	2	2
	2	2	2	2	2	2	2	2	2	2
	m	v	m	2	2	2	2	2	2	2
	3	.	=	●	●	●	●	●	●	●
	+	.	↓	↓	↓	↓	↓	↓	↓	↓
	+	.	↓	↓	↓	↓	↓	↓	↓	↓
60	↓	↓	↓	↓	↓	↓	↓	↓	↓	↓
	7	+	●	●	●	●	●	●	●	●
	+	↓	●	●	●	●	●	●	●	●
	●	●	●	●	●	●	●	●	●	●
	2	●	△	2	2	2	2	2	2	2
	2	2	⊕	2	2	2	2	2	2	2
	+	2	⊕	2	2	2	2	2	2	2
	m	2	⊕	2	2	2	2	2	2	2
	3	2	⊕	2	2	2	2	2	2	2
70	v	0	0	+	+	+	+	+	+	+
	0	⊕	0	0	0	0	0	0	0	0
	0	+	⊕	●	●	●	●	●	●	●
	0	●	⊕	●	●	●	●	●	●	●
	⊕	↓	⊕	↓	↓	↓	↓	↓	↓	↓
	0	+	+	↓	↓	↓	↓	↓	↓	↓
	2	2	0	●	●	●	●	●	●	●
	2	2	↓	●	●	●	●	●	●	●
	+	●	2	●	●	●	●	●	●	●
80	0	=	=	●	2	2	2	2	2	2
	◆	<	△	.	●	2	2	2	2	2
	●	⊕	m	↓	+	2	2	2	2	2
	=	●	2	●	2	2	2	2	2	2
	v	△	●	2	7	2	2	2	2	2
	●	△	.	●	2	●	2	2	2	2
	●	v	◆	↓	7	2	2	2	2	2
	⊕	+	2	2	2	2	2	2	2	2
	+	+	⊕	2	2	2	2	2	2	2
	+	+	⊕	2	2	2	2	2	2	2
90	↓	+	↓	↓	↓	↓	↓	↓	↓	↓
	+	+	↓	↓	↓	↓	↓	↓	↓	↓
	+	+	↓	↓	↓	↓	↓	↓	↓	↓
	●	+	+	⊕	+	+	+	+	+	+
	↓	⊕	↓	↓	↓	↓	↓	↓	↓	↓
	△	△	+	.	+	⊕	⊕	⊕	⊕	⊕
	▽	△	0	.	.	v	●	↓	↓	↓
	⊕	h	+	.	m	L	●	.	⊕	h
100	◇	+	v	m	v	●	0	⊕	⊕	⊕
	▽	m	⊕	v	⊕	2	m	0	⊕	⊕
	▽	.	+	△	.	●	⊕	⊕	⊕	⊕
	▽	m	+	△	.	●	⊕	⊕	⊕	⊕



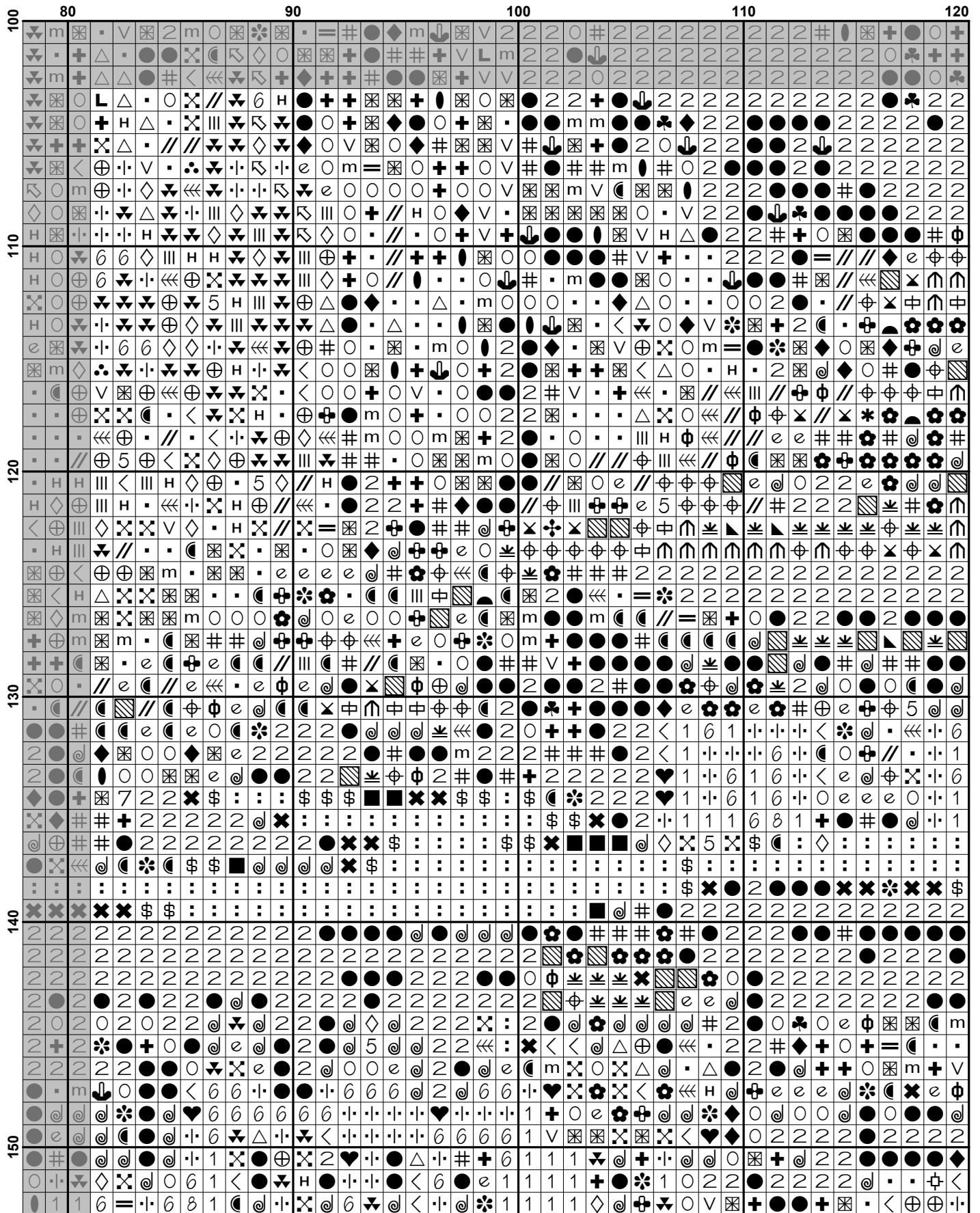


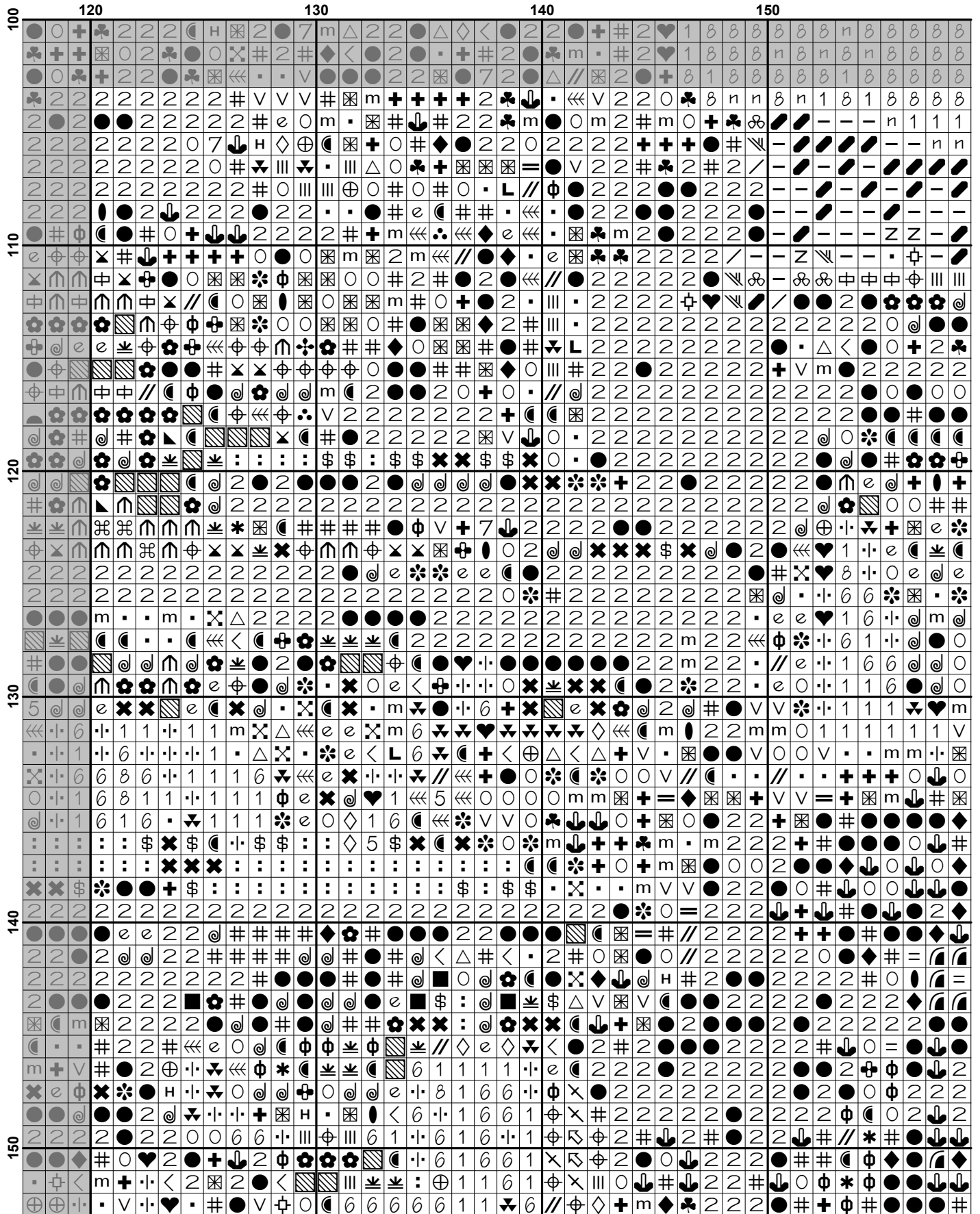






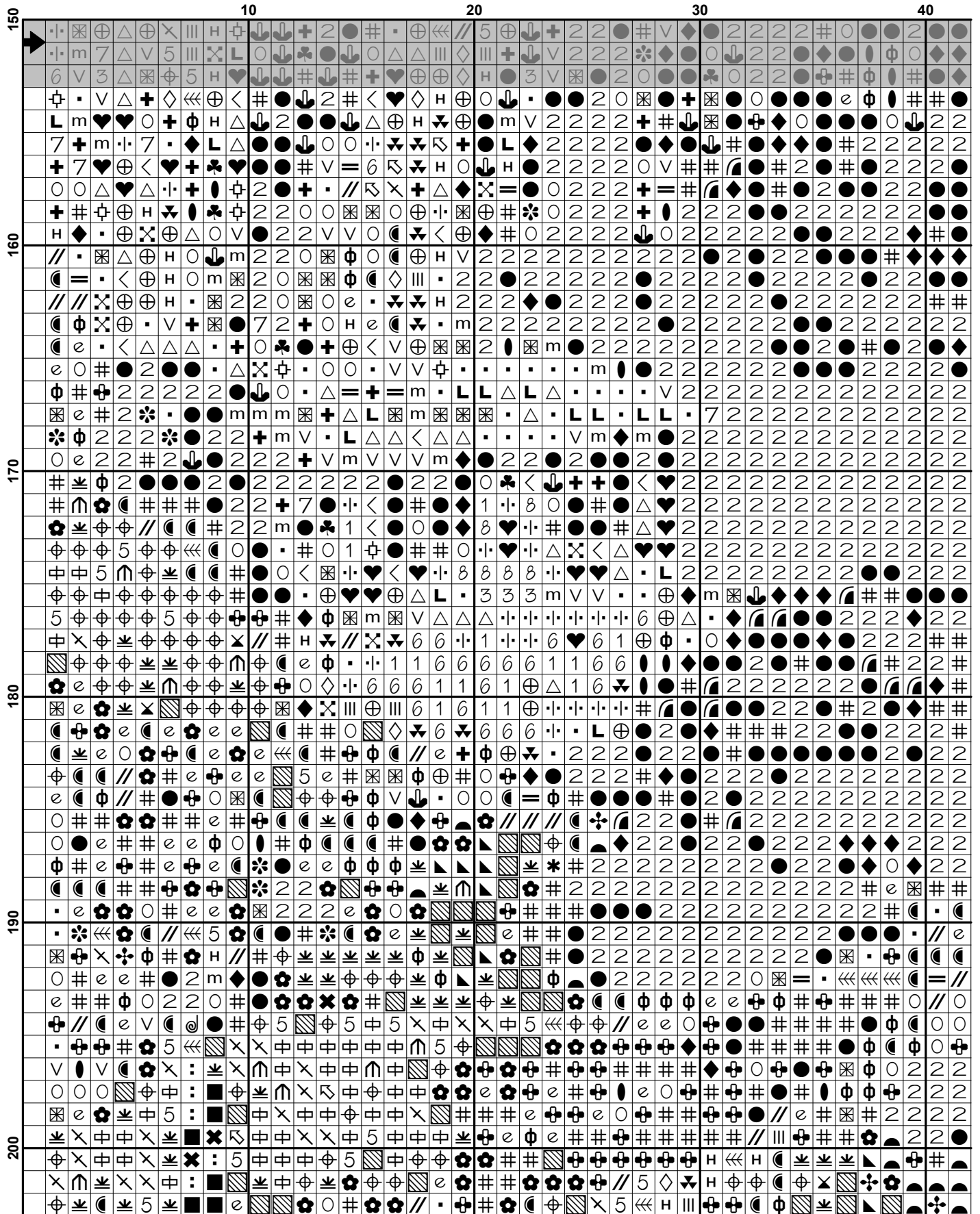


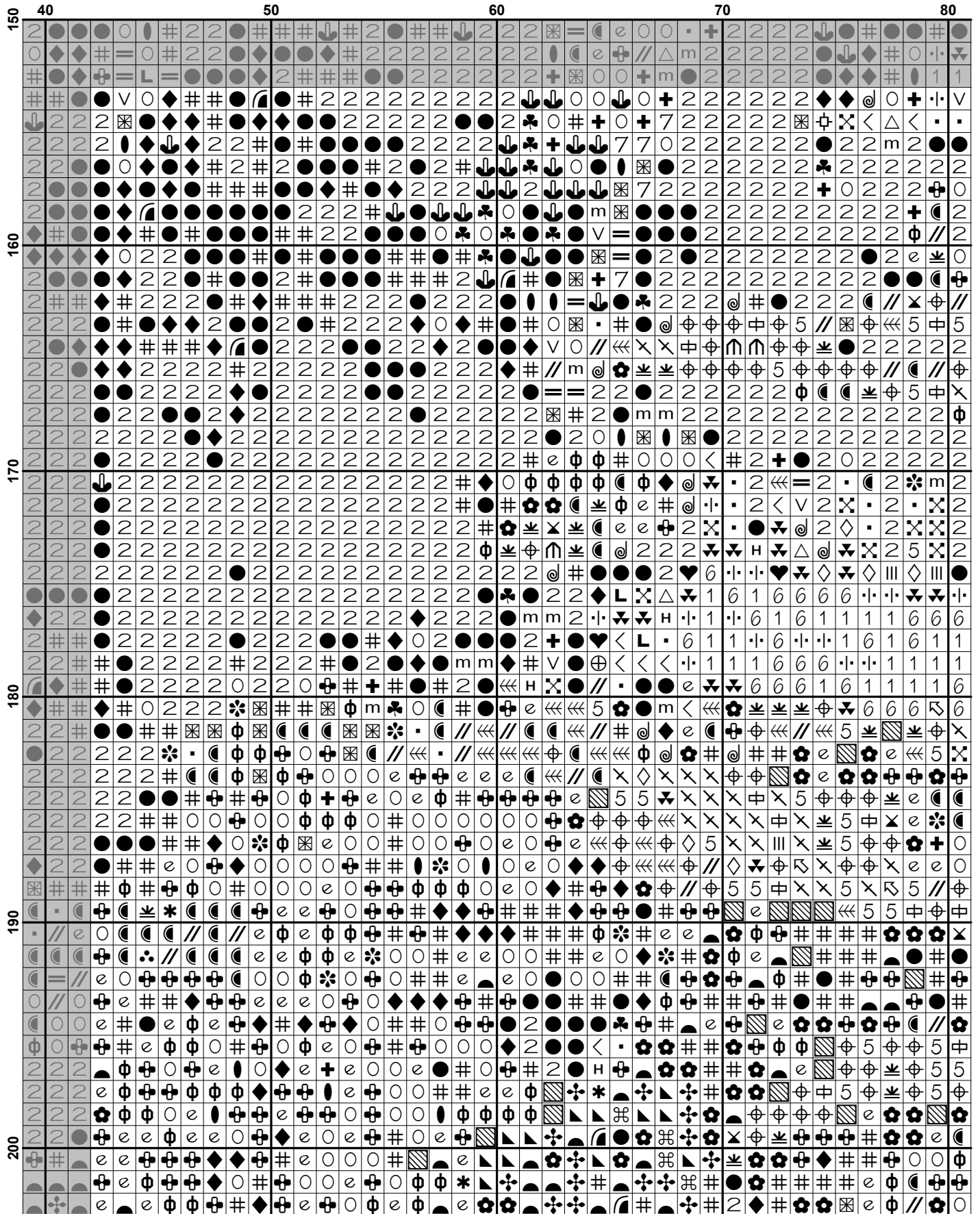


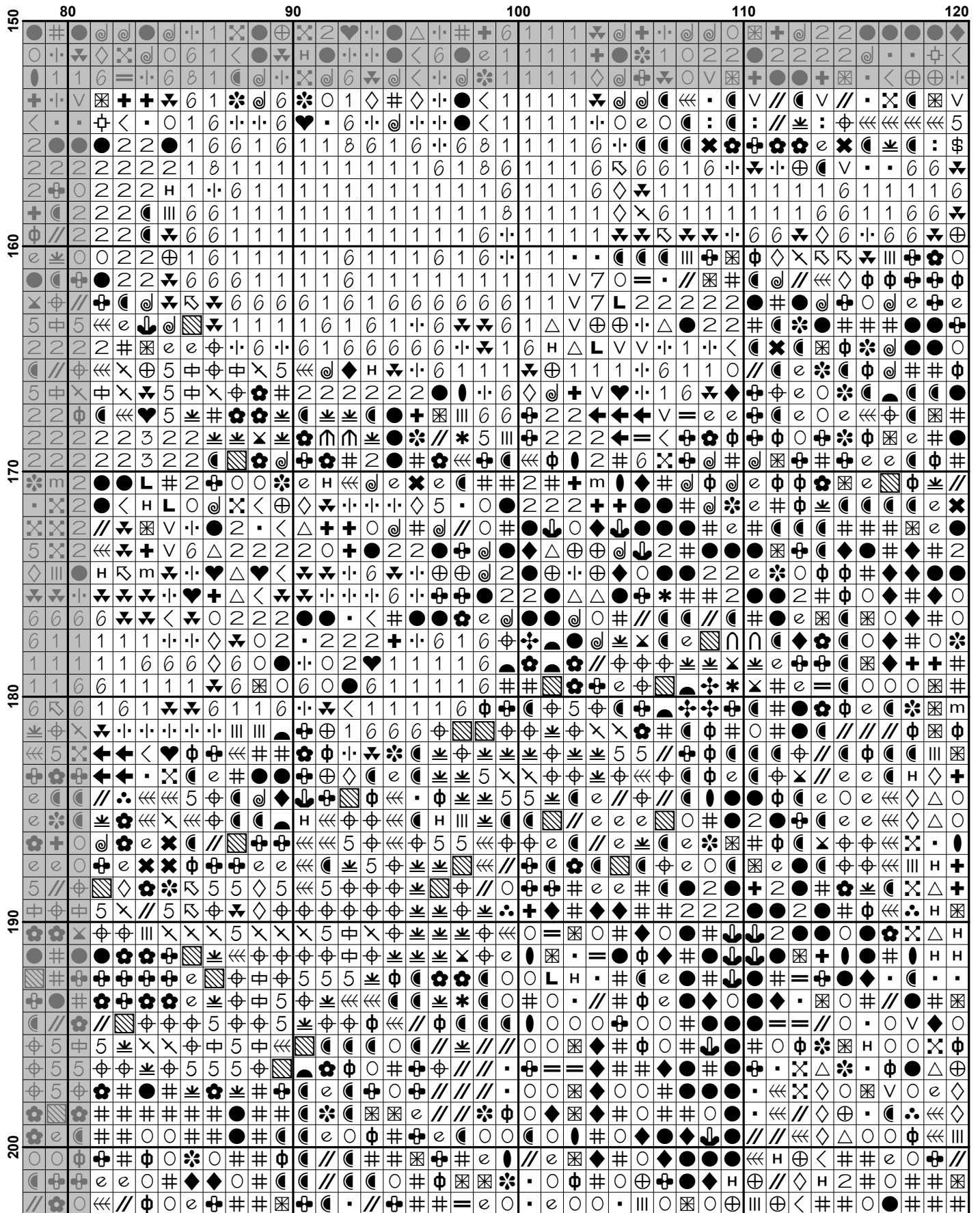


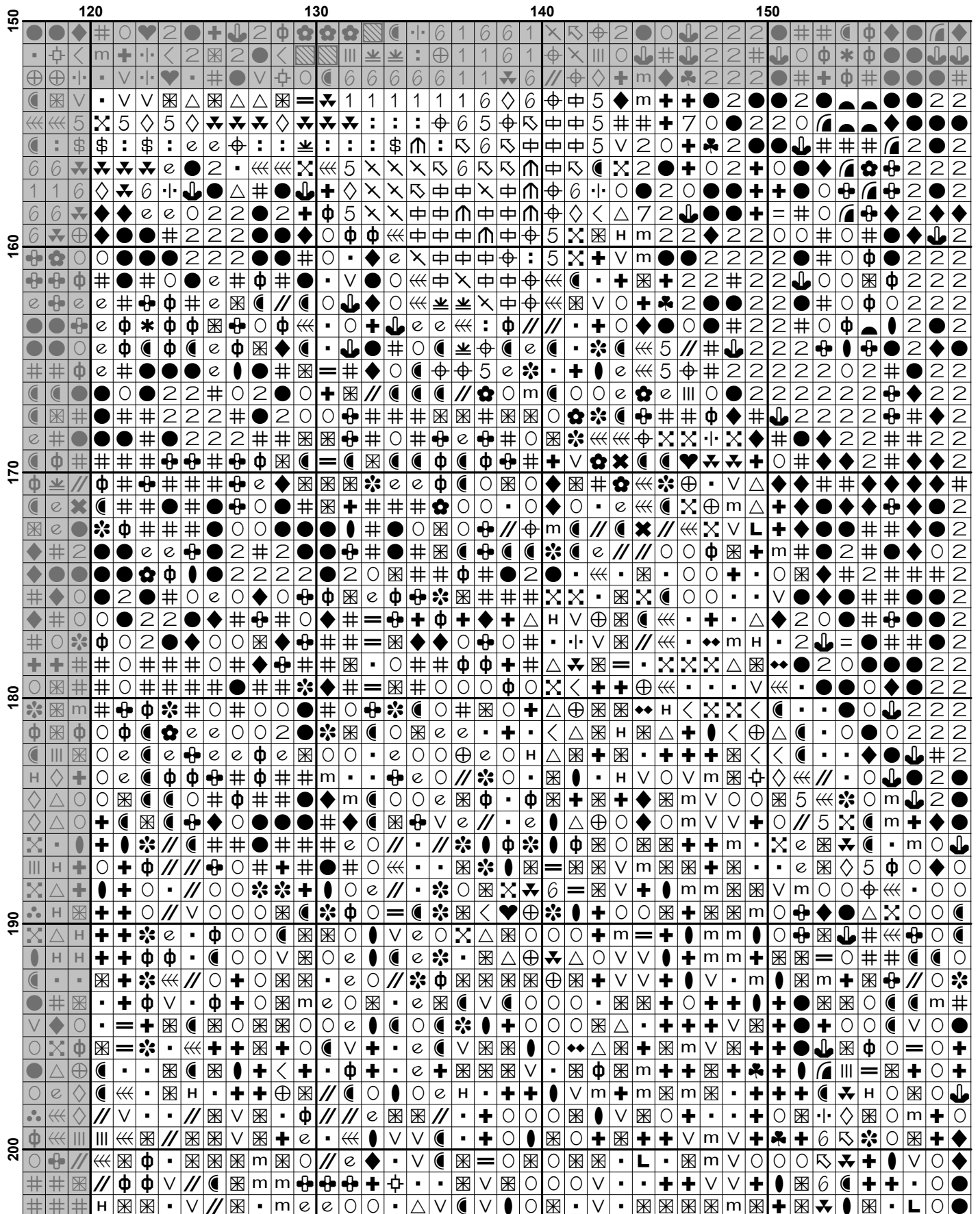




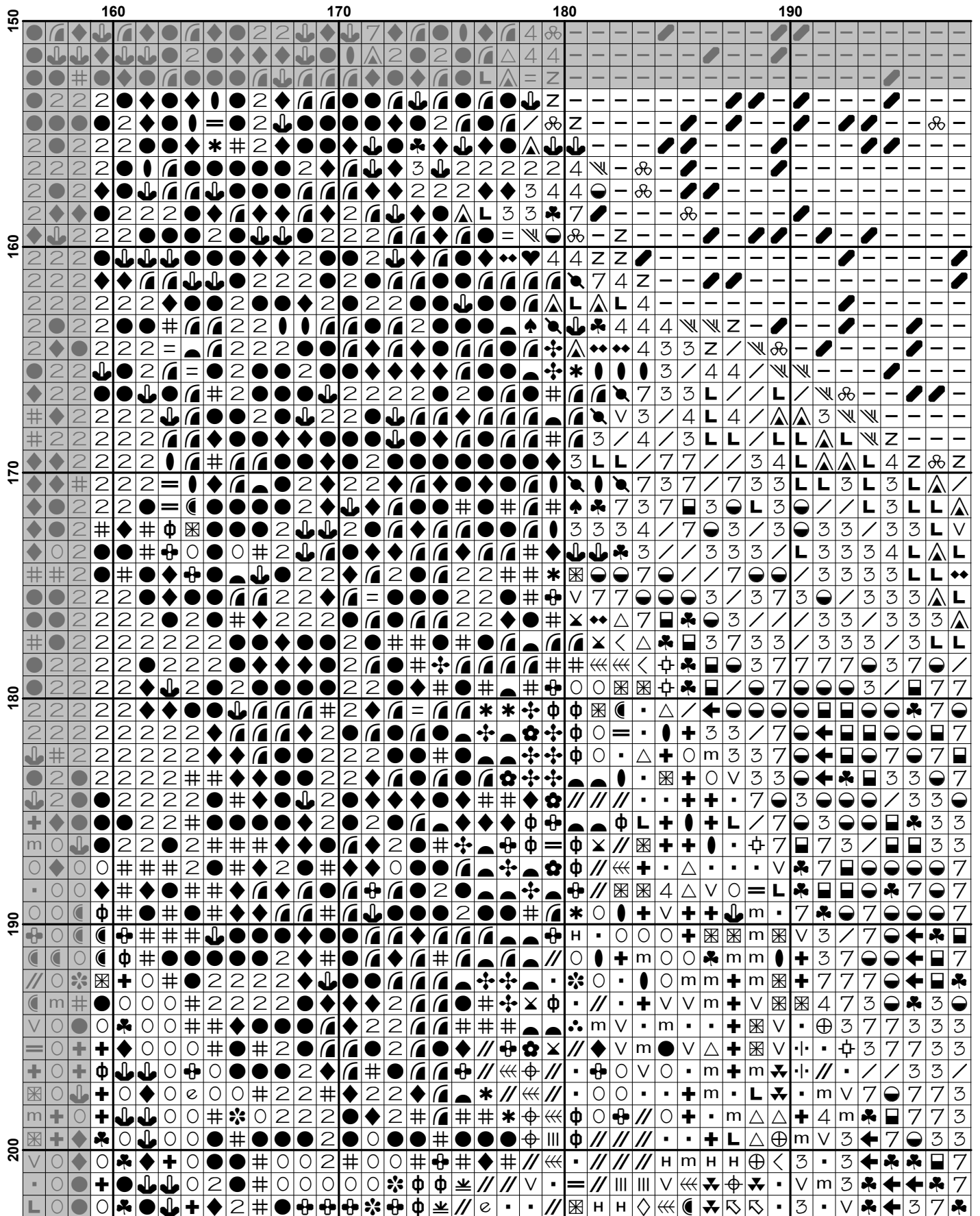




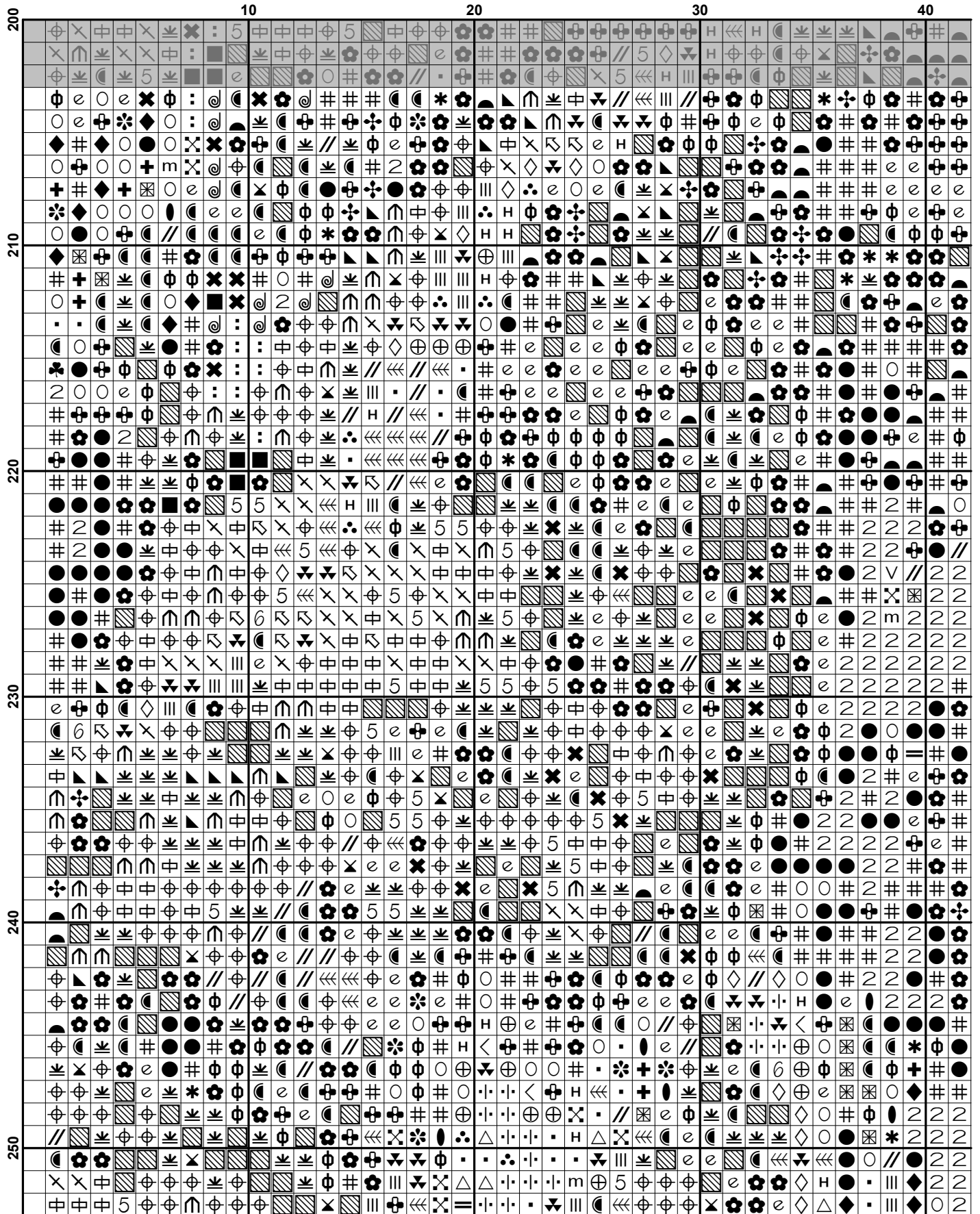


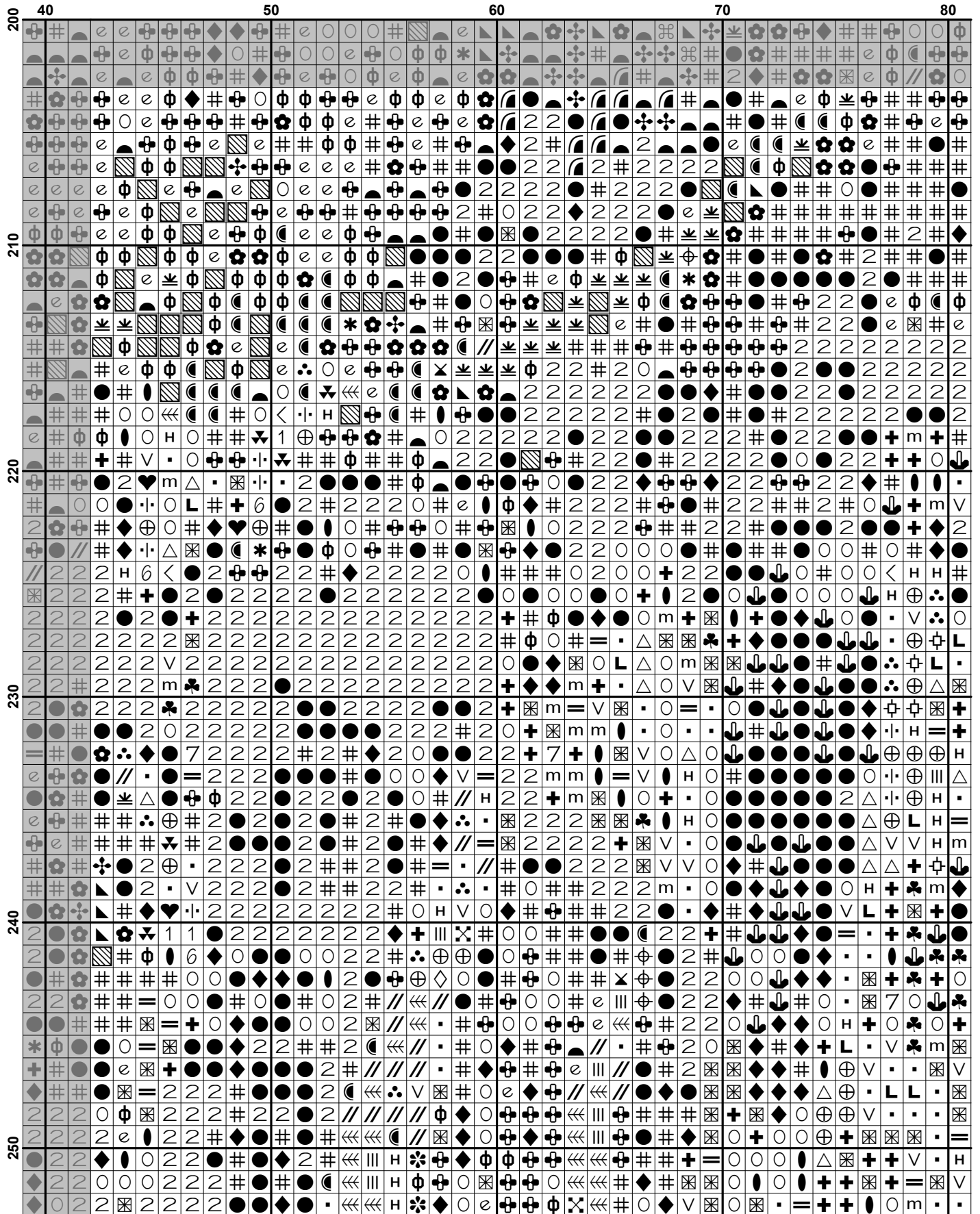


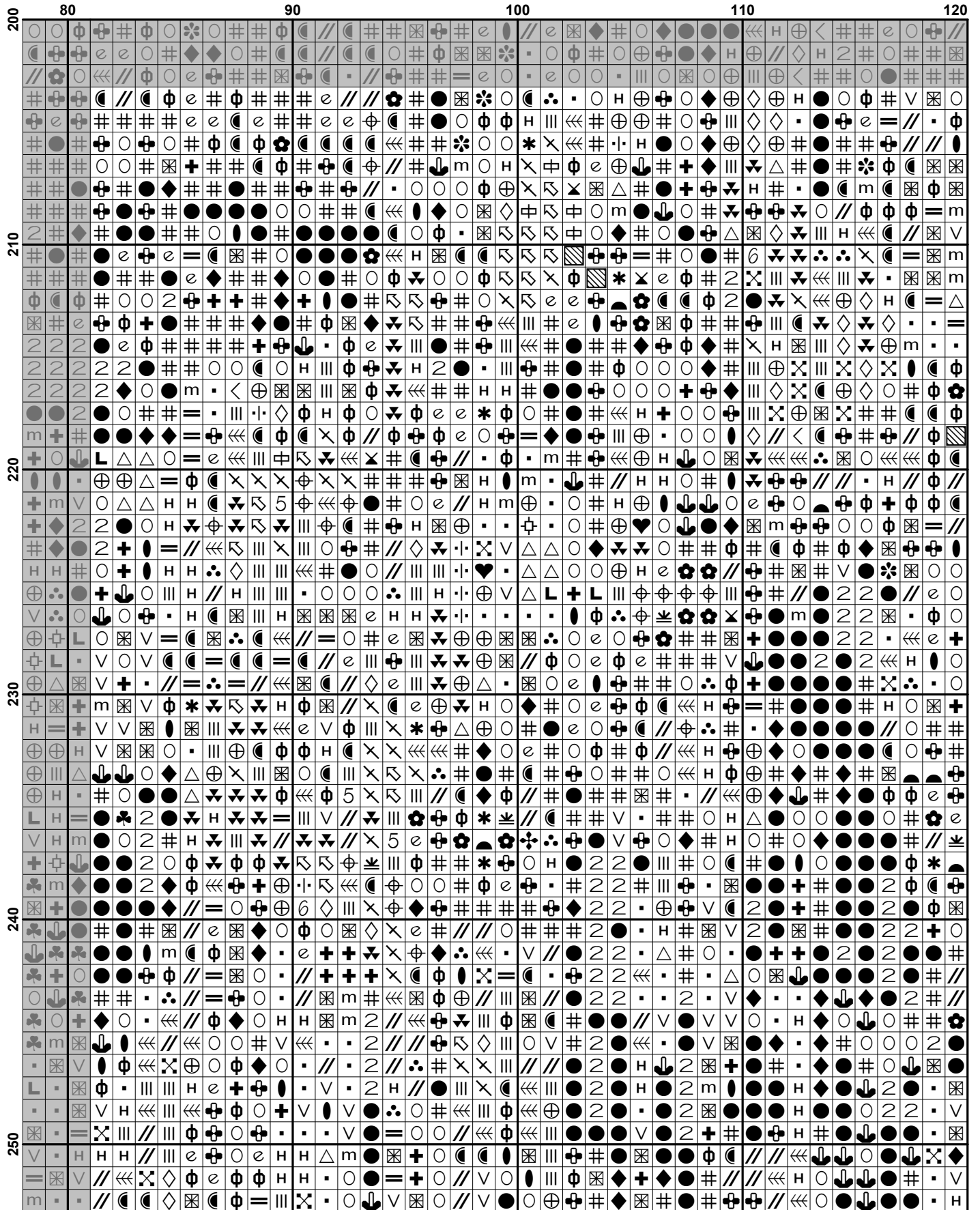


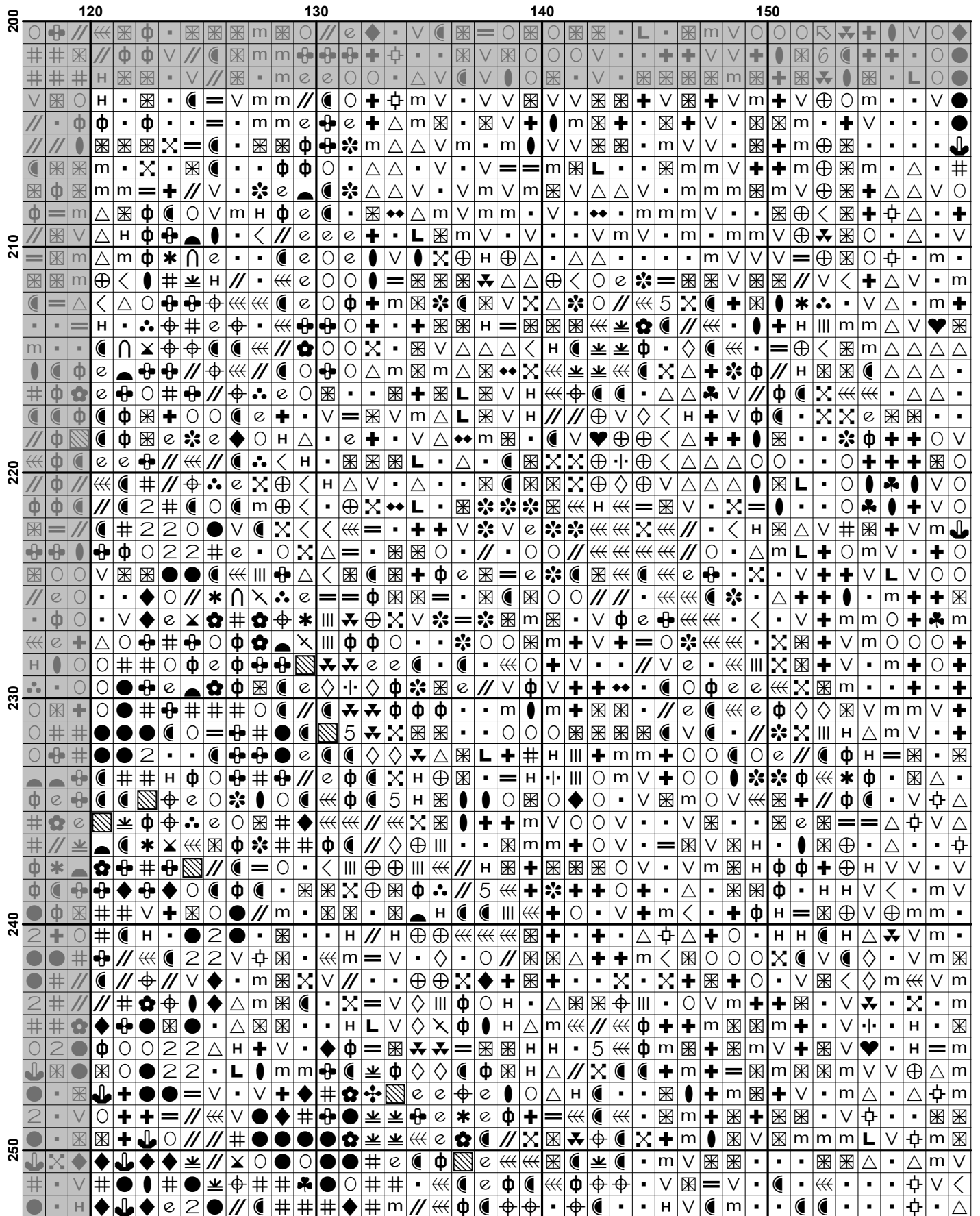




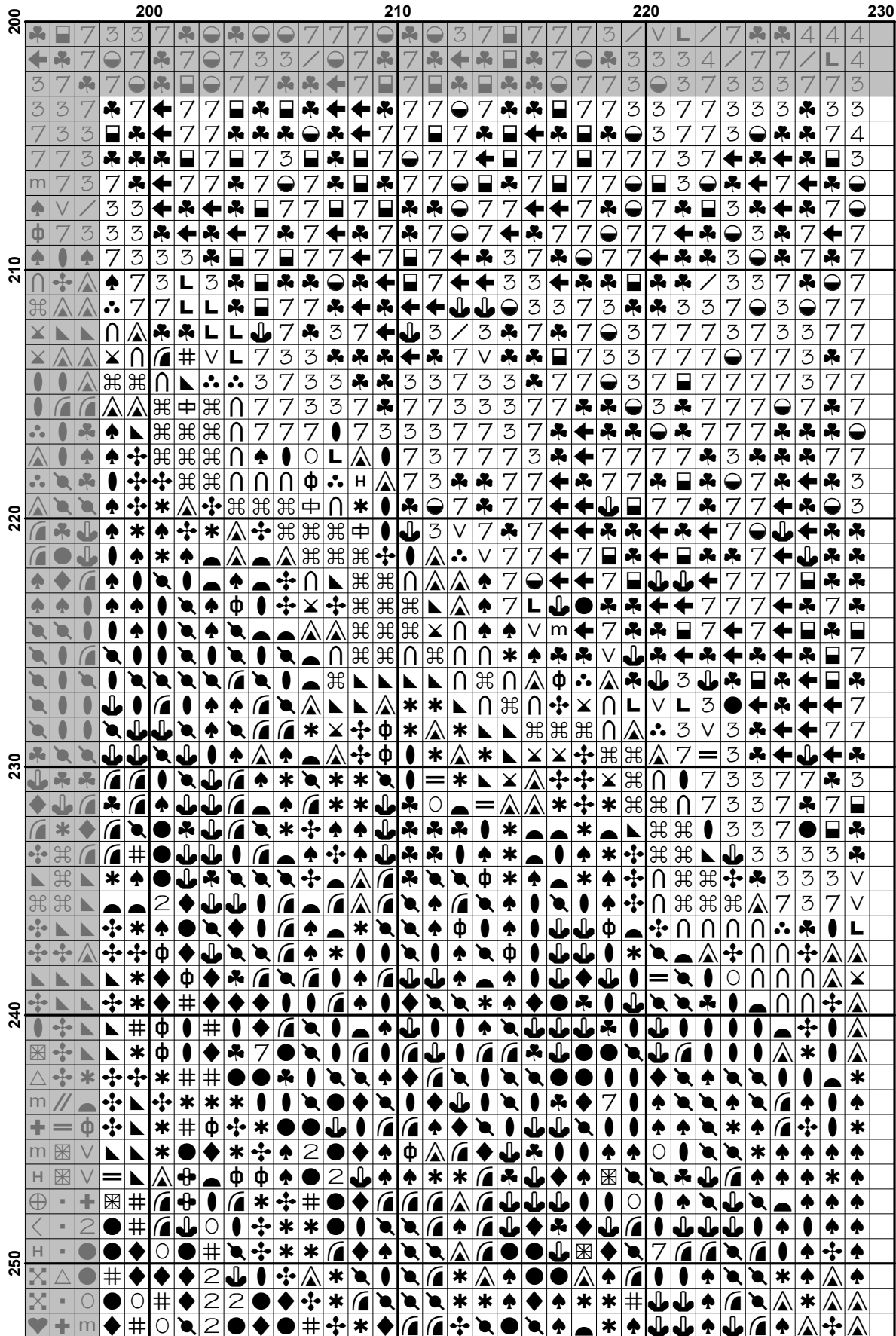










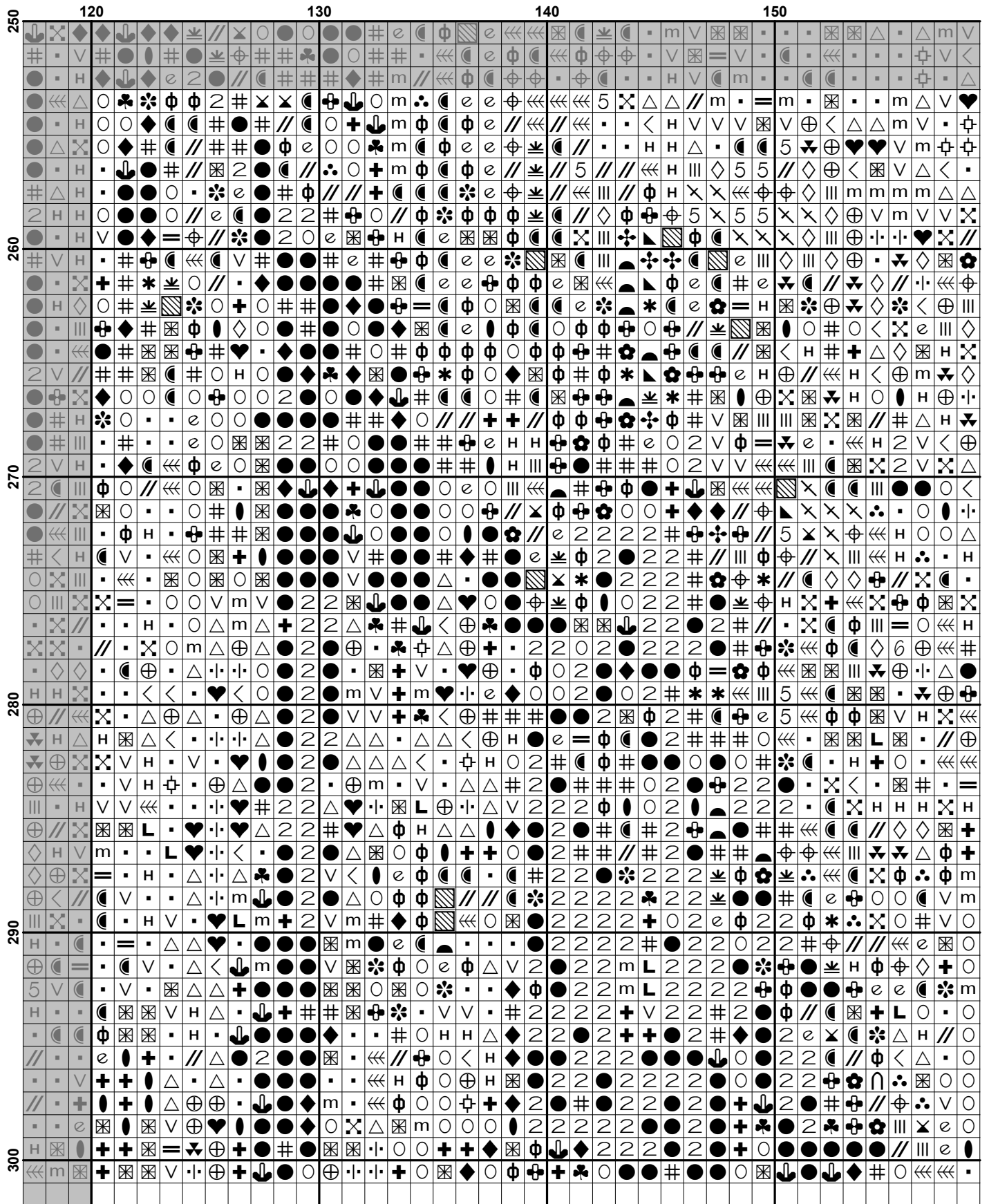


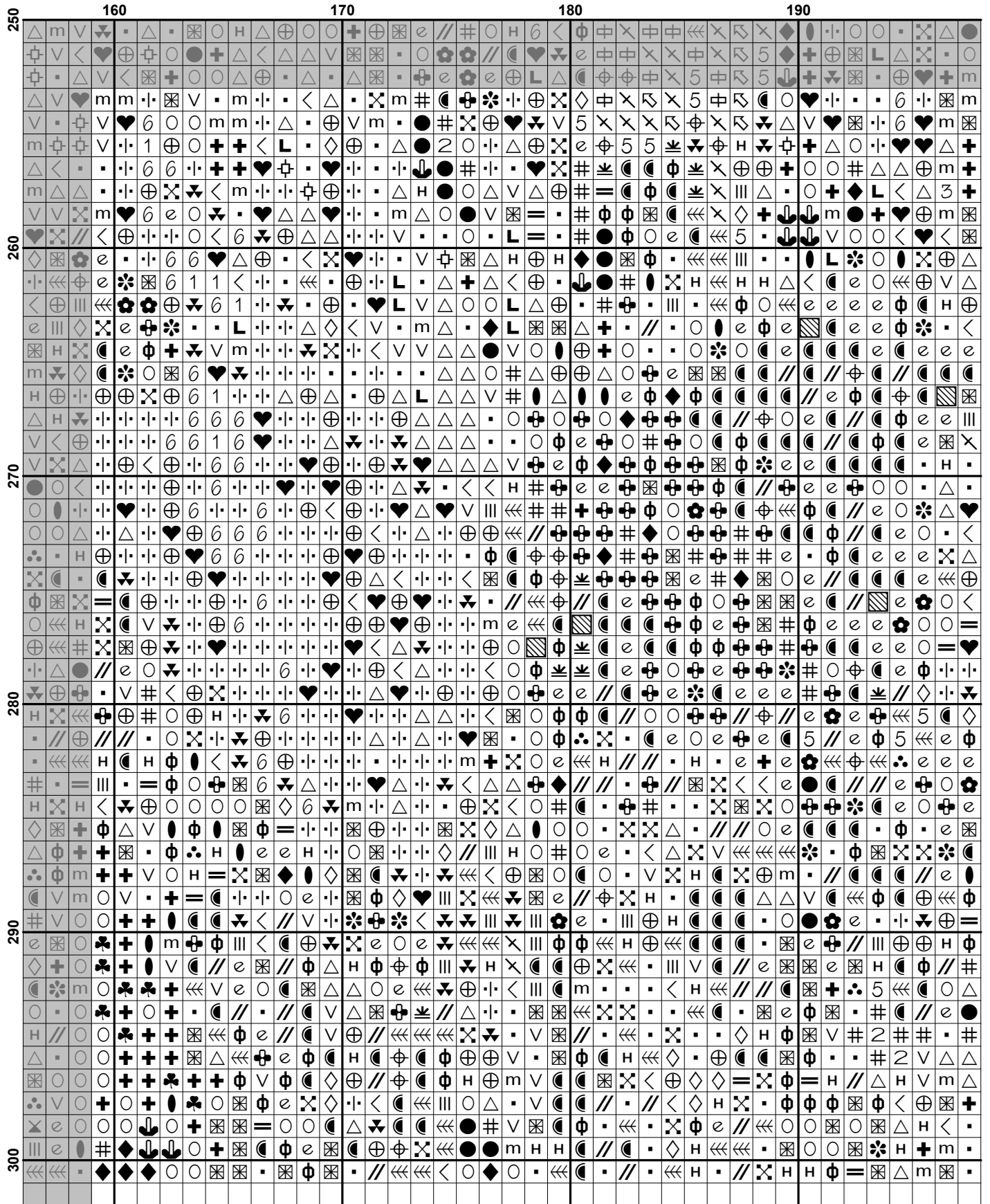


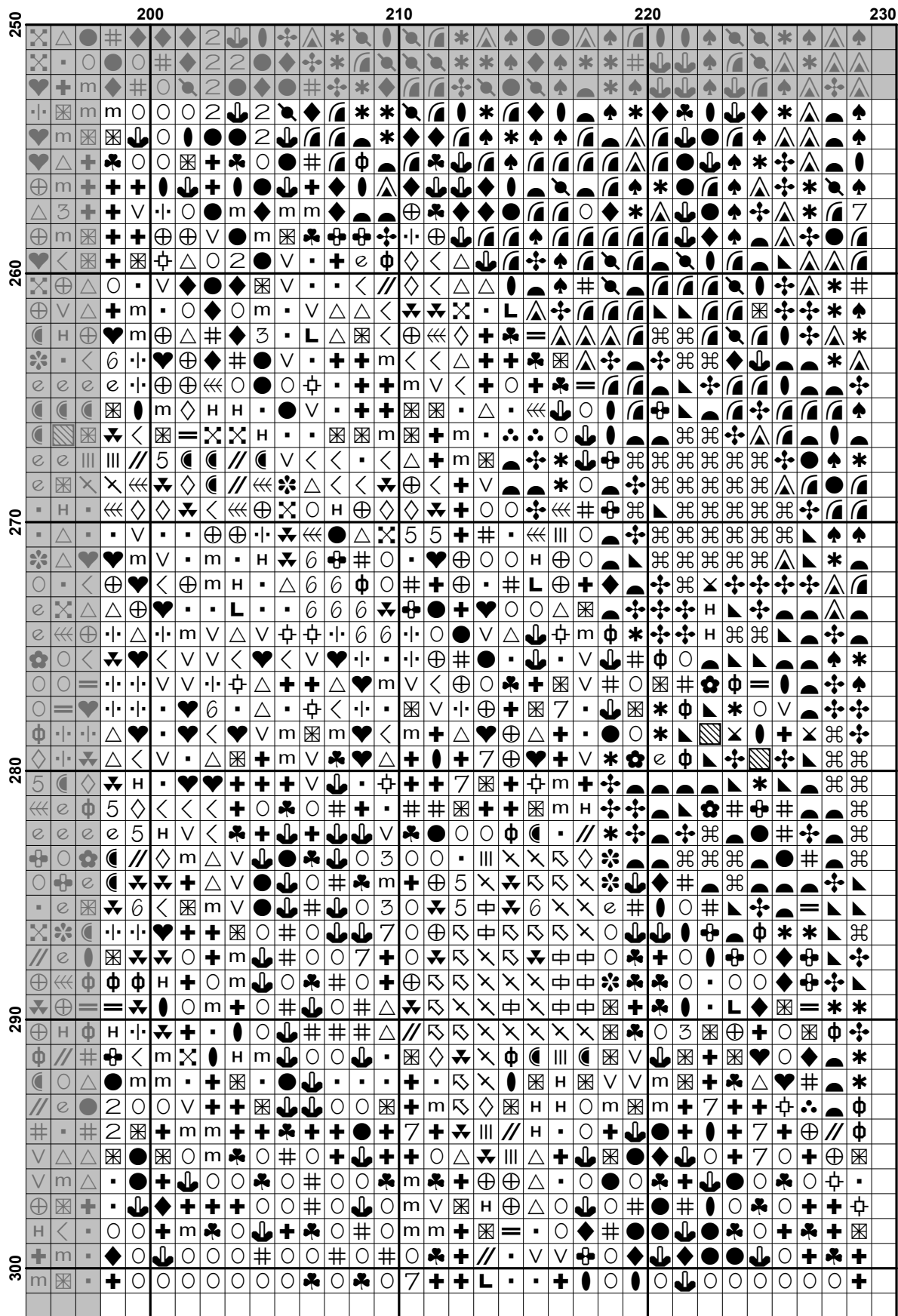












**Pattern Name:** Tiger's Nest Monastery  
**Designed By:** Photo by Mike Swigunski - Unsplash  
**Company:** Artecy Cross Stitch  
**Copyright:** Copyright Artecy Cross Stitch. All rights Reserved.  
**Fabric:** Aida 14, White  
 228w X 300h Stitches  
**Size(s):** 14 Count, 16-1/4w X 21-3/8h in  
 16 Count, 14-1/4w X 18-3/4h in  
 18 Count, 12-5/8w X 16-5/8h in

**Floss Used for Full Stitches:**

Symbol	Strands	Type	Number	Color
	2	DMC	152	Shell Pink-MD LT
	2	DMC	157	Cornflower Blue-VY LT
	2	DMC	158	Cornflower Blue-MD VY DK
	2	DMC	159	Gray Blue-LT
	2	DMC	160	Gray Blue-MD
	2	DMC	161	Gray Blue
	2	DMC	166	Moss Green-MD LT
	2	DMC	300	Mahogany-VY DK
	2	DMC	310	Black
	2	DMC	315	Antique Mauve-VY DK
	2	DMC	317	Pewter Gray
	2	DMC	318	Steel Gray-LT
	2	DMC	336	Navy Blue
	2	DMC	350	Coral-MD
	2	DMC	351	Coral
	2	DMC	372	Mustard-LT
	2	DMC	413	Pewter Gray-DK
	2	DMC	414	Steel Gray-DK
	2	DMC	434	Brown-LT
	2	DMC	435	Brown-VY LT
	2	DMC	436	Tan
	2	DMC	451	Shell Gray-DK
	2	DMC	452	Shell Gray-MD
	2	DMC	498	Christmas Red-DK
	2	DMC	612	Drab Brown-LT
	2	DMC	632	Desert Sand-UL VY DK
	2	DMC	640	Beige Gray-VY DK
	2	DMC	647	Beaver Gray-MD
	2	DMC	730	Olive Green-VY DK
	2	DMC	732	Olive Green
	2	DMC	734	Olive Green-LT
	2	DMC	738	Tan-VY LT
	2	DMC	745	Yellow-LT Pale
	2	DMC	754	Peach-LT
	2	DMC	779	Cocoa-DK
	2	DMC	783	Topaz-MD
	2	DMC	794	Cornflower Blue-LT
	2	DMC	799	Delft Blue-MD
	2	DMC	801	Coffee Brown-DK
	2	DMC	809	Delft Blue
	2	DMC	832	Golden Olive
	2	DMC	833	Golden Olive-LT
	2	DMC	842	Beige Brown-VY LT
	2	DMC	844	Beaver Brown-UL DK
	2	DMC	902	Garnet-VY DK

Symbol	Strands	Type	Number	Color
	9	2	DMC 934	Black Avocado Green
		2	DMC 936	Avocado Green-VY DK
	#	2	DMC 938	Coffee Brown-UL DK
	·	2	DMC 951	Tawny-LT
	*	2	DMC 3012	Khaki Green-MD
	◆	2	DMC 3023	Brown Gray-LT
	◆	2	DMC 3031	Mocha Brown-VY DK
	m	2	DMC 3041	Antique Violet-MD
	⊕	2	DMC 3042	Antique Violet-LT
	≡	2	DMC 3064	Desert Sand
		2	DMC 3362	Pine Green-DK
	♠	2	DMC 3363	Pine Green-MD
	△	2	DMC 3364	Pine Green
	●	2	DMC 3371	Black Brown
	×	2	DMC 3721	Shell Pink-DK
	<	2	DMC 3727	Antique Mauve-LT
	+	2	DMC 3740	Antique Violet-DK
	♥	2	DMC 3743	Antique Violet-VY LT
	n	2	DMC 3747	Blue Violet-VY LT
	β	2	DMC 3756	Baby Blue-UL VY LT
	6	2	DMC 3770	Tawny-VY LT
	5	2	DMC 3771	Terra Cotta-UL VY LT
	☾	2	DMC 3772	Desert Sand-VY DK
	◇	2	DMC 3779	Terra Cotta-UL VY LT
	●	2	DMC 3787	Brown Gray-DK
		2	DMC 3799	Pewter Gray-VY DK
	⊕	2	DMC 3822	Straw-LT
	×	2	DMC 3856	Mahogany-UL VY LT
	⊗	2	DMC 3860	Cocoa
	·	2	DMC 3861	Cocoa-LT
	⊕	2	DMC 3862	Mocha Beige-DK
	н	2	DMC 3864	Mocha Beige-LT
	1	2	DMC 3865	Winter White

**Notes:**

The middle of this pattern can be found on page 15 and is 115 stitches across and 151 stitches down.

Pattern layout using page numbers in top left.

1 2 3 4 5 6  
 7 8 9 10 11 12  
 13 14 15 16 17 18  
 19 20 21 22 23 24  
 25 26 27 28 29 30  
 31 32 33 34 35 36



**Usage Summary**

**Strands Per Skein:** 6

**Skein Length:** 313.0 in

Type	Number	Full	Half	Quarter	Petite	Back(in)	Str(in)	Spec(in)	French	Bead	Skein Est.
DMC 152	152	425	0	0	0	0.0	0.0	0.0	0	0	1.000
DMC 157	157	1113	0	0	0	0.0	0.0	0.0	0	0	1.000
DMC 158	158	107	0	0	0	0.0	0.0	0.0	0	0	1.000
DMC 159	159	1257	0	0	0	0.0	0.0	0.0	0	0	1.000
DMC 160	160	97	0	0	0	0.0	0.0	0.0	0	0	1.000
DMC 161	161	166	0	0	0	0.0	0.0	0.0	0	0	1.000
DMC 166	166	115	0	0	0	0.0	0.0	0.0	0	0	1.000
DMC 300	300	597	0	0	0	0.0	0.0	0.0	0	0	1.000
DMC 310	310	5547	0	0	0	0.0	0.0	0.0	0	0	4.000
DMC 315	315	254	0	0	0	0.0	0.0	0.0	0	0	1.000
DMC 317	317	917	0	0	0	0.0	0.0	0.0	0	0	1.000
DMC 318	318	312	0	0	0	0.0	0.0	0.0	0	0	1.000
DMC 336	336	105	0	0	0	0.0	0.0	0.0	0	0	1.000
DMC 350	350	43	0	0	0	0.0	0.0	0.0	0	0	1.000
DMC 351	351	174	0	0	0	0.0	0.0	0.0	0	0	1.000
DMC 372	372	174	0	0	0	0.0	0.0	0.0	0	0	1.000
DMC 413	413	1340	0	0	0	0.0	0.0	0.0	0	0	1.000
DMC 414	414	482	0	0	0	0.0	0.0	0.0	0	0	1.000
DMC 434	434	486	0	0	0	0.0	0.0	0.0	0	0	1.000
DMC 435	435	531	0	0	0	0.0	0.0	0.0	0	0	1.000
DMC 436	436	834	0	0	0	0.0	0.0	0.0	0	0	1.000
DMC 451	451	1054	0	0	0	0.0	0.0	0.0	0	0	1.000
DMC 452	452	813	0	0	0	0.0	0.0	0.0	0	0	1.000
DMC 498	498	22	0	0	0	0.0	0.0	0.0	0	0	1.000
DMC 612	612	956	0	0	0	0.0	0.0	0.0	0	0	1.000
DMC 632	632	1093	0	0	0	0.0	0.0	0.0	0	0	1.000
DMC 640	640	368	0	0	0	0.0	0.0	0.0	0	0	1.000
DMC 647	647	343	0	0	0	0.0	0.0	0.0	0	0	1.000
DMC 730	730	317	0	0	0	0.0	0.0	0.0	0	0	1.000
DMC 732	732	190	0	0	0	0.0	0.0	0.0	0	0	1.000
DMC 734	734	45	0	0	0	0.0	0.0	0.0	0	0	1.000
DMC 738	738	546	0	0	0	0.0	0.0	0.0	0	0	1.000
DMC 745	745	276	0	0	0	0.0	0.0	0.0	0	0	1.000
DMC 754	754	714	0	0	0	0.0	0.0	0.0	0	0	1.000
DMC 779	779	3407	0	0	0	0.0	0.0	0.0	0	0	2.000
DMC 783	783	117	0	0	0	0.0	0.0	0.0	0	0	1.000
DMC 794	794	403	0	0	0	0.0	0.0	0.0	0	0	1.000
DMC 799	799	1029	0	0	0	0.0	0.0	0.0	0	0	1.000
DMC 801	801	1068	0	0	0	0.0	0.0	0.0	0	0	1.000
DMC 809	809	2011	0	0	0	0.0	0.0	0.0	0	0	2.000
DMC 832	832	126	0	0	0	0.0	0.0	0.0	0	0	1.000
DMC 833	833	105	0	0	0	0.0	0.0	0.0	0	0	1.000
DMC 842	842	650	0	0	0	0.0	0.0	0.0	0	0	1.000
DMC 844	844	159	0	0	0	0.0	0.0	0.0	0	0	1.000
DMC 902	902	213	0	0	0	0.0	0.0	0.0	0	0	1.000
DMC 934	934	98	0	0	0	0.0	0.0	0.0	0	0	1.000
DMC 936	936	417	0	0	0	0.0	0.0	0.0	0	0	1.000
DMC 938	938	3076	0	0	0	0.0	0.0	0.0	0	0	2.000
DMC 951	951	536	0	0	0	0.0	0.0	0.0	0	0	1.000
DMC 3012	3012	209	0	0	0	0.0	0.0	0.0	0	0	1.000
DMC 3023	3023	82	0	0	0	0.0	0.0	0.0	0	0	1.000

Type	Number	Full	Half	Quarter	Petite	Back(in)	Str(in)	Spec(in)	French	Bead	Skein	Est.
DMC	3031	1382	0	0	0	0.0	0.0	0.0	0	0	1.000	
DMC	3041	1126	0	0	0	0.0	0.0	0.0	0	0	1.000	
DMC	3042	143	0	0	0	0.0	0.0	0.0	0	0	1.000	
DMC	3064	961	0	0	0	0.0	0.0	0.0	0	0	1.000	
DMC	3362	121	0	0	0	0.0	0.0	0.0	0	0	1.000	
DMC	3363	145	0	0	0	0.0	0.0	0.0	0	0	1.000	
DMC	3364	147	0	0	0	0.0	0.0	0.0	0	0	1.000	
DMC	3371	5135	0	0	0	0.0	0.0	0.0	0	0	3.000	
DMC	3721	94	0	0	0	0.0	0.0	0.0	0	0	1.000	
DMC	3727	329	0	0	0	0.0	0.0	0.0	0	0	1.000	
DMC	3740	2332	0	0	0	0.0	0.0	0.0	0	0	2.000	
DMC	3743	724	0	0	0	0.0	0.0	0.0	0	0	1.000	
DMC	3747	2553	0	0	0	0.0	0.0	0.0	0	0	2.000	
DMC	3756	2699	0	0	0	0.0	0.0	0.0	0	0	2.000	
DMC	3770	319	0	0	0	0.0	0.0	0.0	0	0	1.000	
DMC	3771	345	0	0	0	0.0	0.0	0.0	0	0	1.000	
DMC	3772	1475	0	0	0	0.0	0.0	0.0	0	0	1.000	
DMC	3779	400	0	0	0	0.0	0.0	0.0	0	0	1.000	
DMC	3787	709	0	0	0	0.0	0.0	0.0	0	0	1.000	
DMC	3799	2120	0	0	0	0.0	0.0	0.0	0	0	2.000	
DMC	3822	433	0	0	0	0.0	0.0	0.0	0	0	1.000	
DMC	3856	692	0	0	0	0.0	0.0	0.0	0	0	1.000	
DMC	3860	1949	0	0	0	0.0	0.0	0.0	0	0	2.000	
DMC	3861	2083	0	0	0	0.0	0.0	0.0	0	0	2.000	
DMC	3862	1142	0	0	0	0.0	0.0	0.0	0	0	1.000	
DMC	3864	795	0	0	0	0.0	0.0	0.0	0	0	1.000	
DMC	3865	2528	0	0	0	0.0	0.0	0.0	0	0	2.000	