

Artecy

CROSS STITCH

The Clerkenwell Flower Makers

Adapted from Artwork by Samuel Melton Fisher



Cross Stitch Design by Tereena Clarke.

Completed Size = 350w x 235h Stitches

14 Count, 25w x 17h inches (64cm x 43cm)

16 Count, 22w x 15h inches (56cm x 38cm)

18 Count, 19.5w x 13.5h inches (50cm x 34cm)

Uses 76 DMC cotton colours. Only full cross stitches are used in this pattern.

Pattern Instructions

* This pattern can be worked on any fabric type, colour or count you prefer. To work out the size of the finished article, take the number of stitches wide and high and divide it by the count of your fabric (e.g. 14,16,18 count aida etc) to get the size in inches. Times it by 2.54 to get centimetres. We have the sizes in inches shown on the previous page. Also leave at least a few inches of fabric around each side of the design to assist in framing. The higher the fabric count the smaller the completed project will be.

* To put the pattern together look in the top and bottom corners. The page numbers in brackets show which page number it joins up to. Page 1 always starts at the top left hand side of the pattern. Our pages also have a shaded grey section. This indicates a 3 row overlap from adjoining pages to assist with reading the pattern. PLEASE DO NOT RESTITCH THIS AREA.

* You should begin at the centre of the pattern. To find the centre of the pattern it is just a matter of laying the pattern out and locating the arrows at the top and left hand side of the patterns, they are determined by dividing the stitch numbers wide and high in half. Where the two points meet in the middle, that is the centre.

* If you need more assistance to find the middle of your pattern or the page layout, please see the notes section on the colour symbol chart. The easiest way to stitch this pattern, as it has multiple pages, is to stitch one page at a time.

* We suggest using two strands of floss for each stitch and one strand for backstitching if the pattern calls for it.

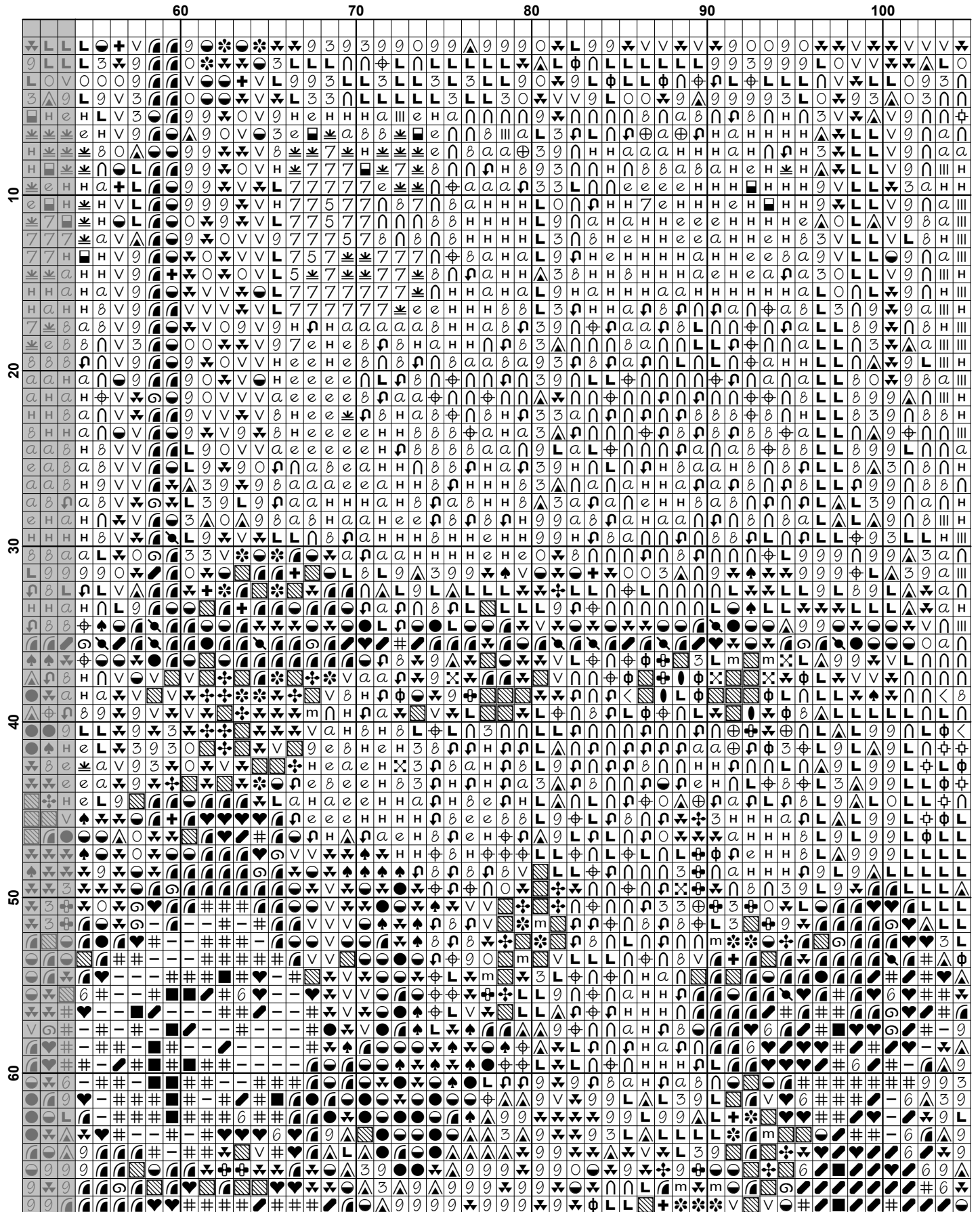
We hope you enjoy stitching our pattern.

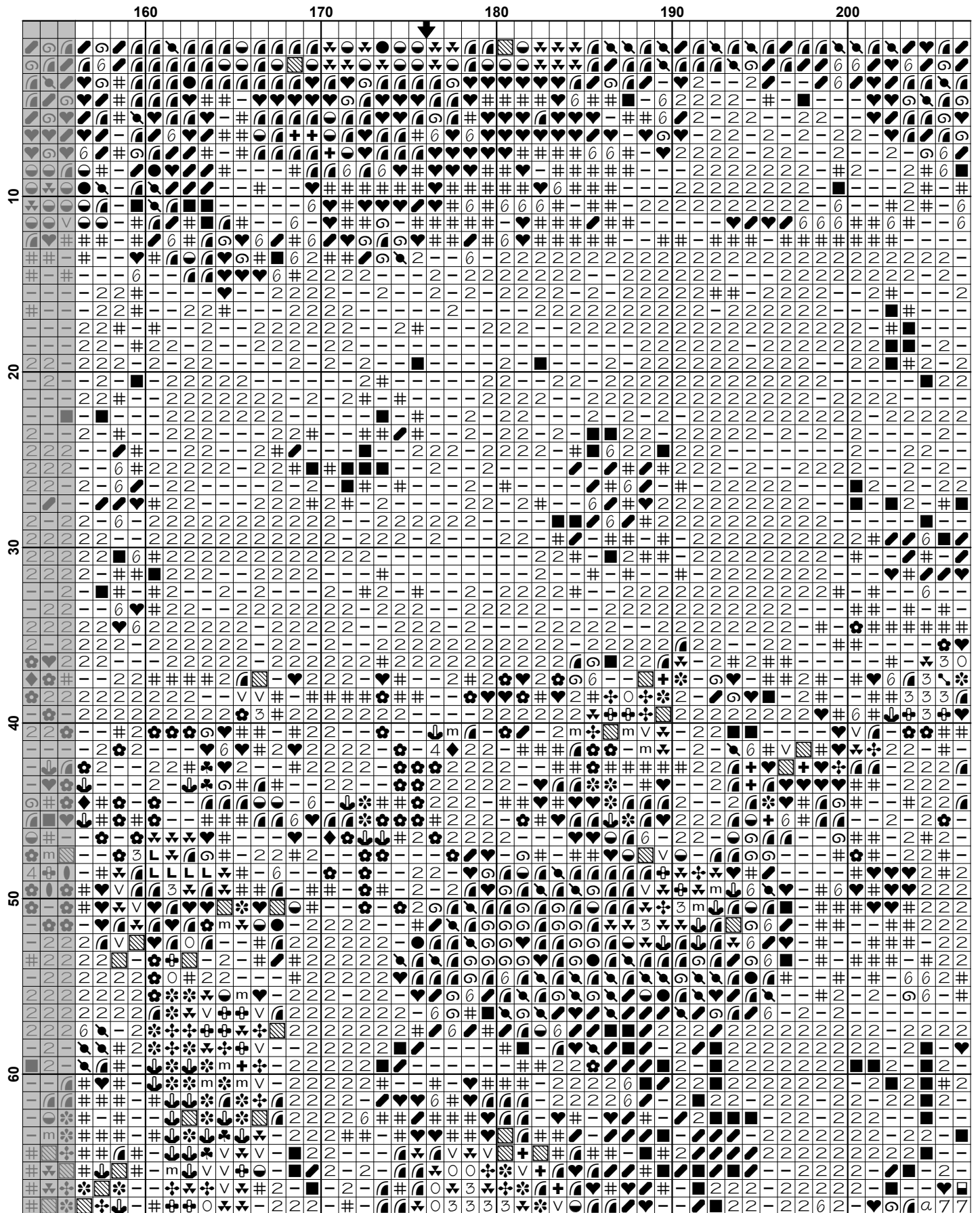
Thanks and Best Wishes
Tereena Clarke

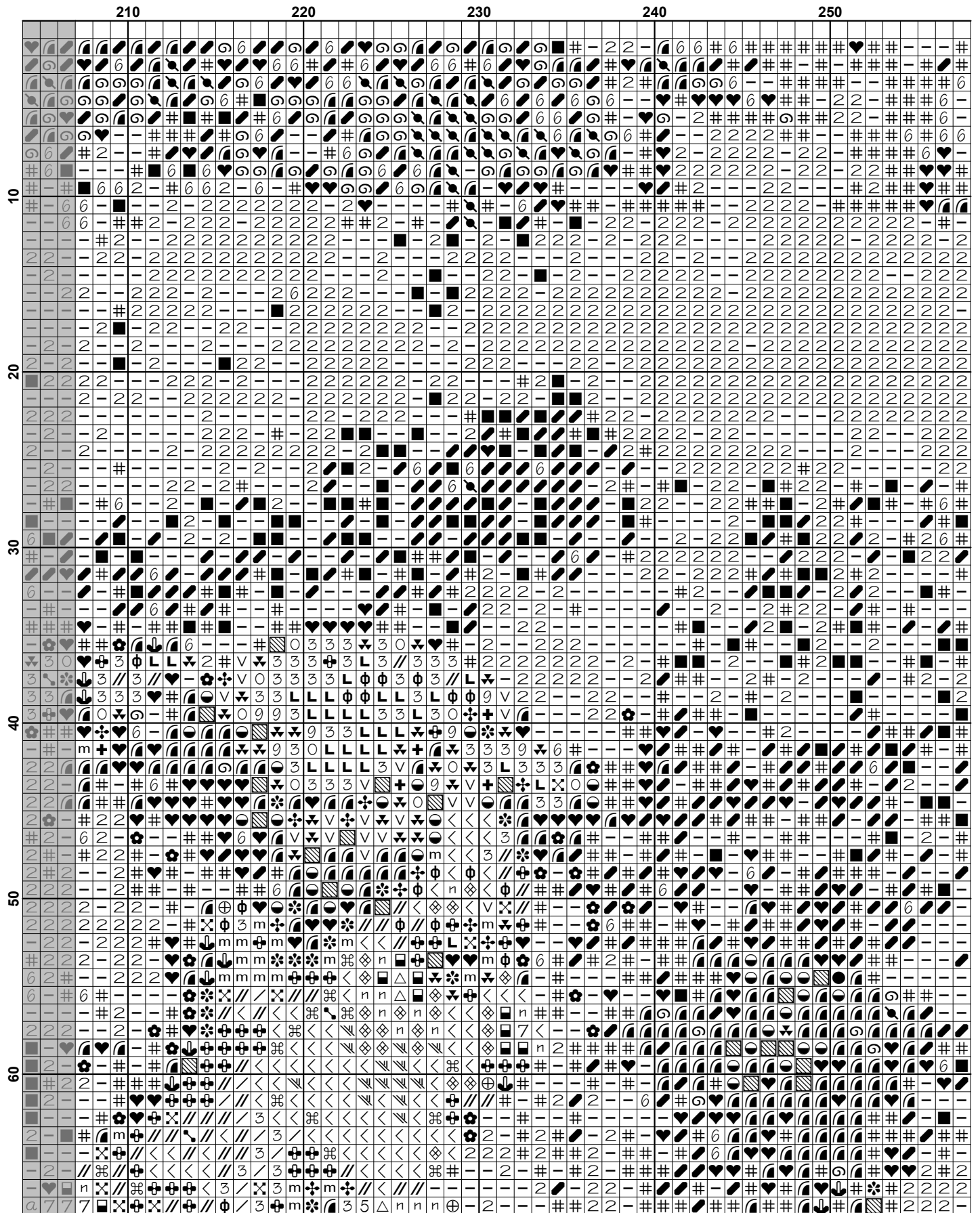
Artecy Cross Stitch
Po Box 3474
Tuggerah, NSW 2259
Australia

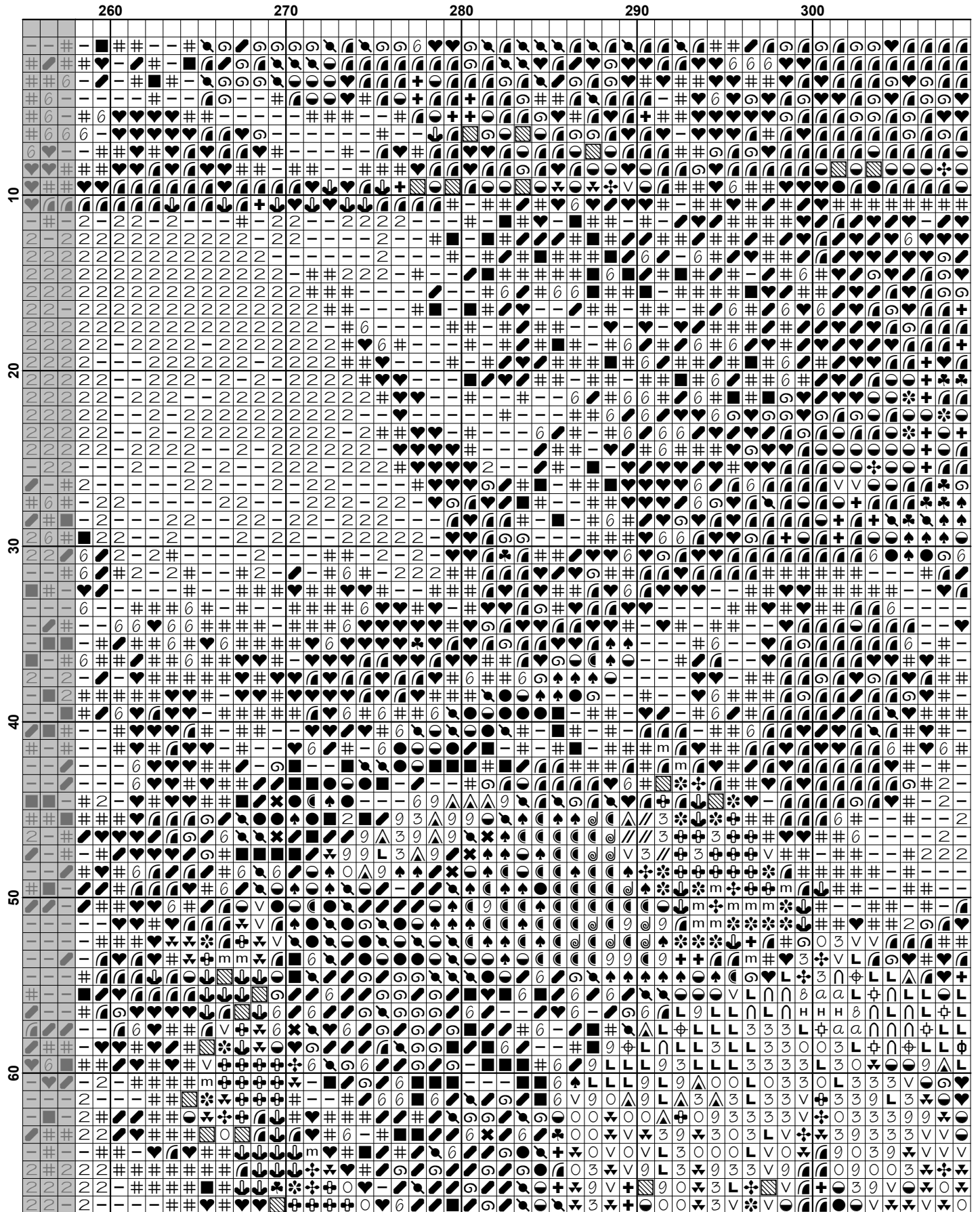
Websites: www.artecy.com and www.artecyshop.com
Email: artecy@artecy.com or stitch@artecyshop.com

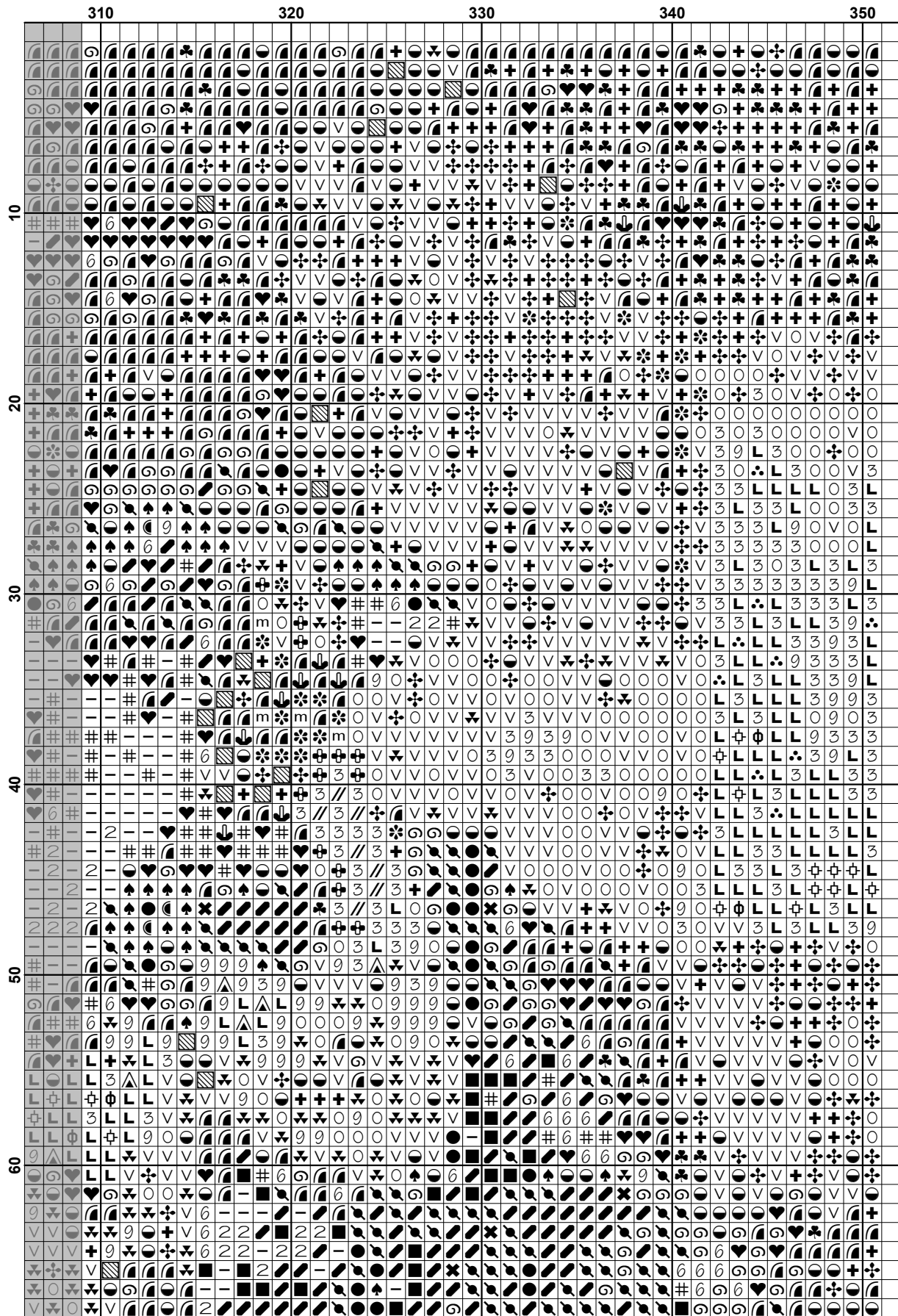
*Patterns are strictly for personal use only. It is against our copyright to make kits for sale from our designs or to sell, copy or redistribute this pattern in any form. You may not upload our patterns to any internet forums or groups or any other website. You may make 1 copy of this pattern for a working copy for your own personal use if needed.

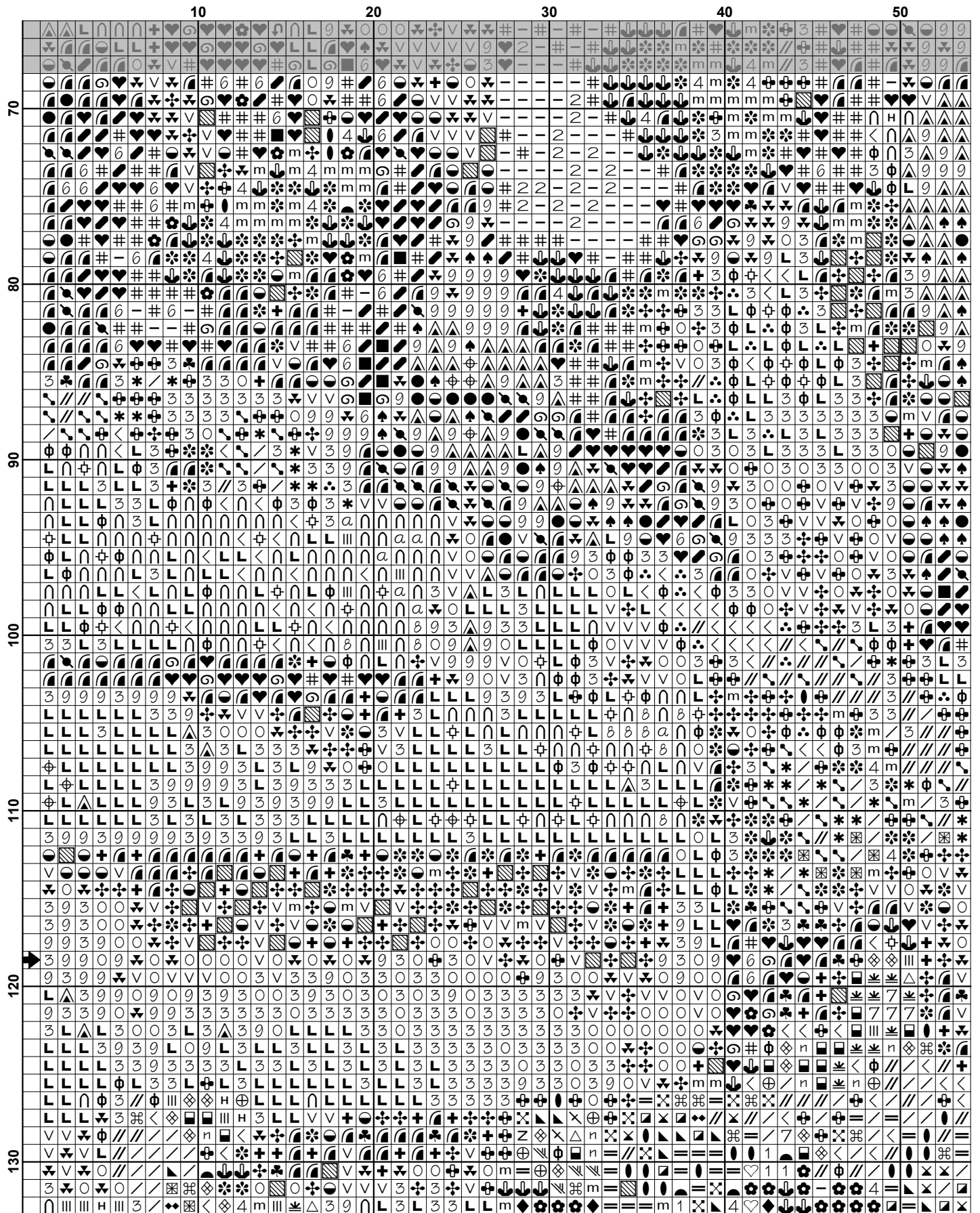


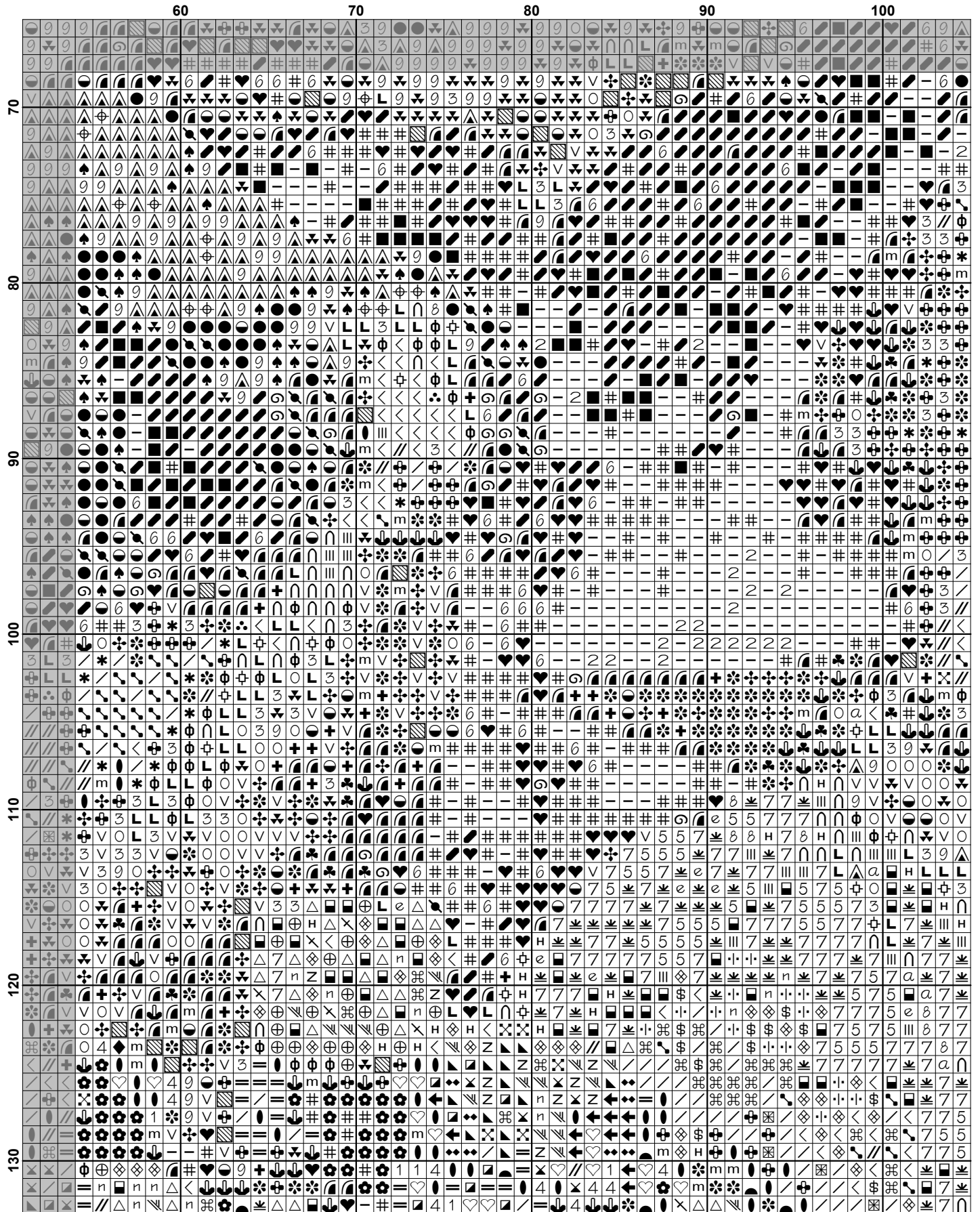


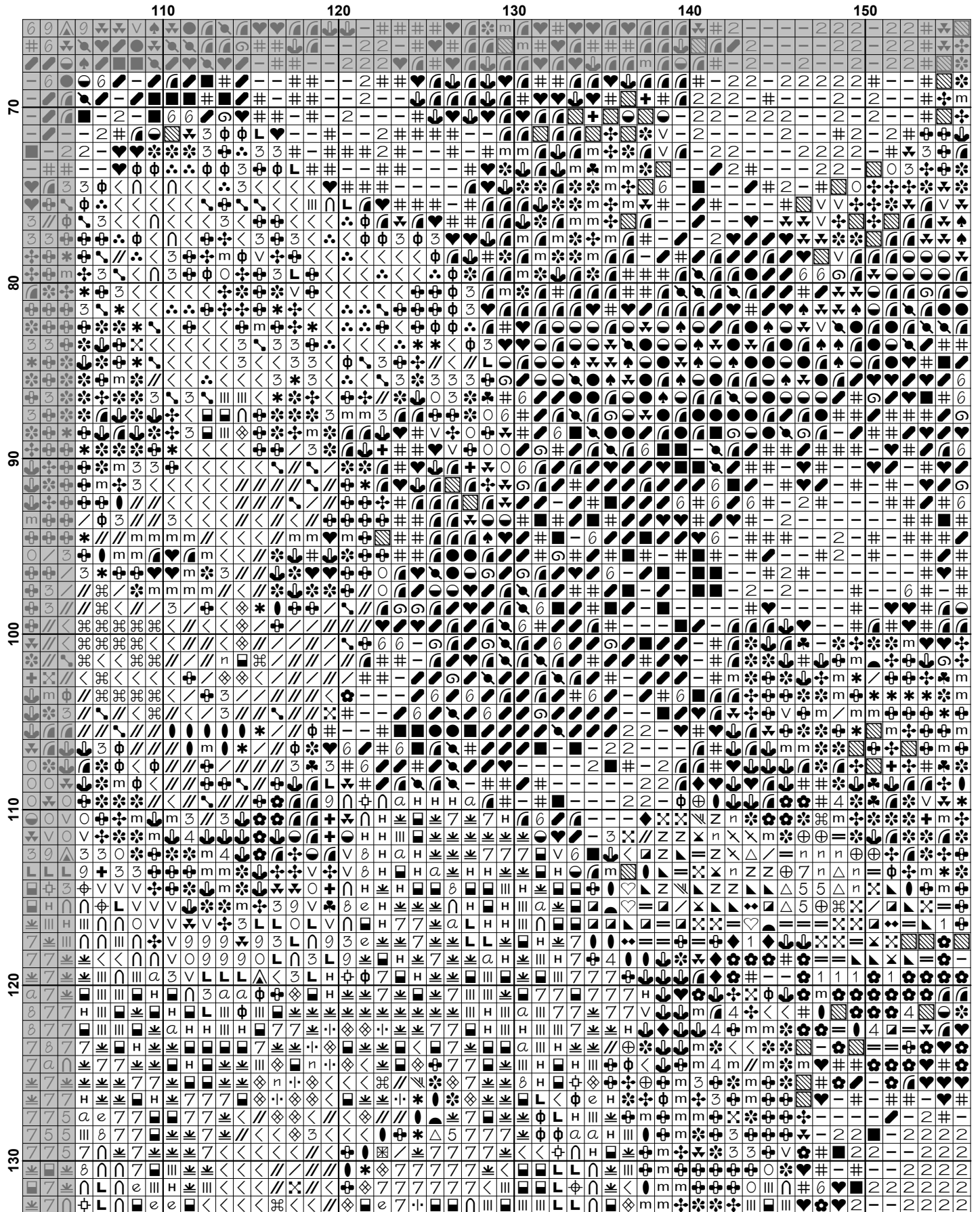


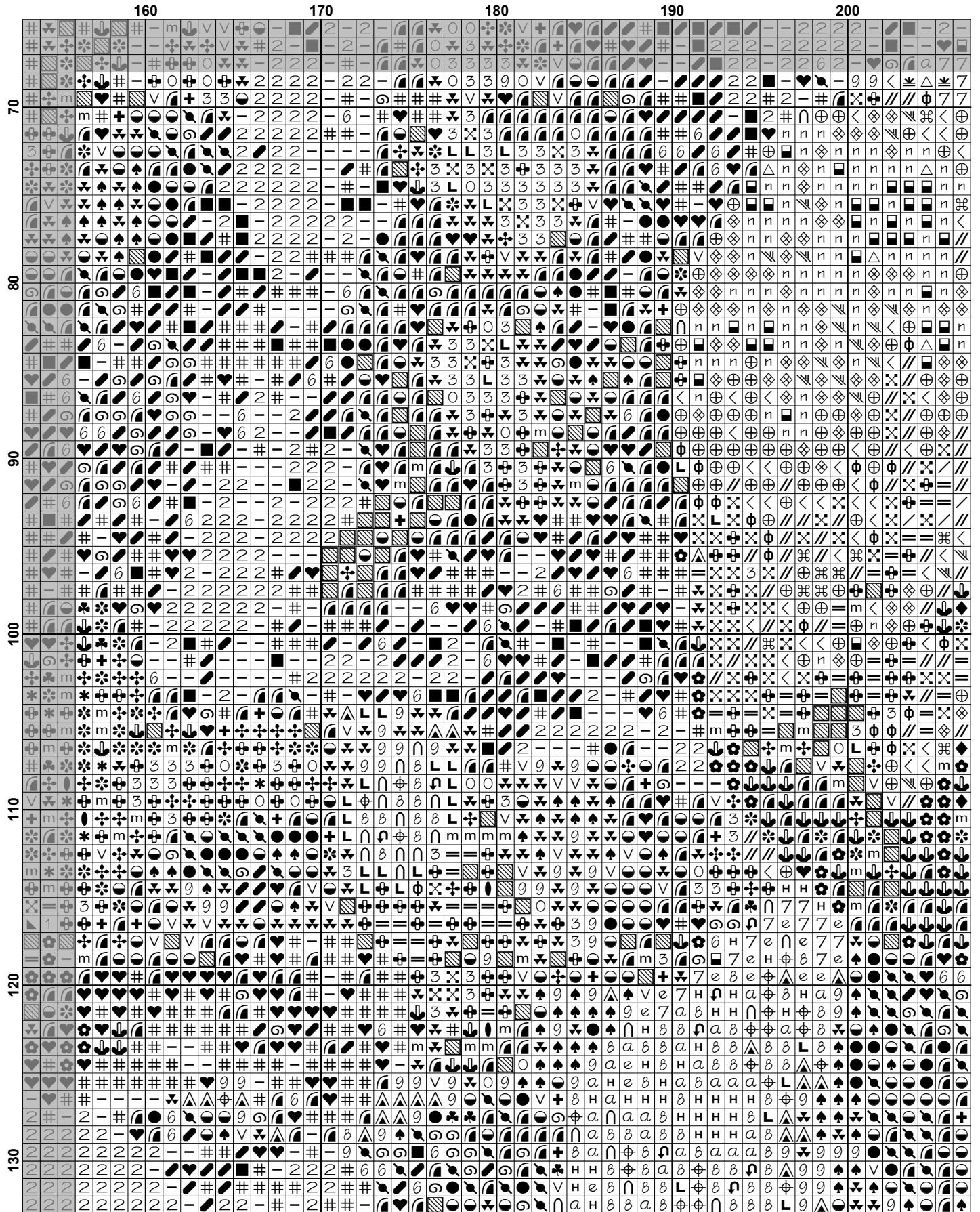


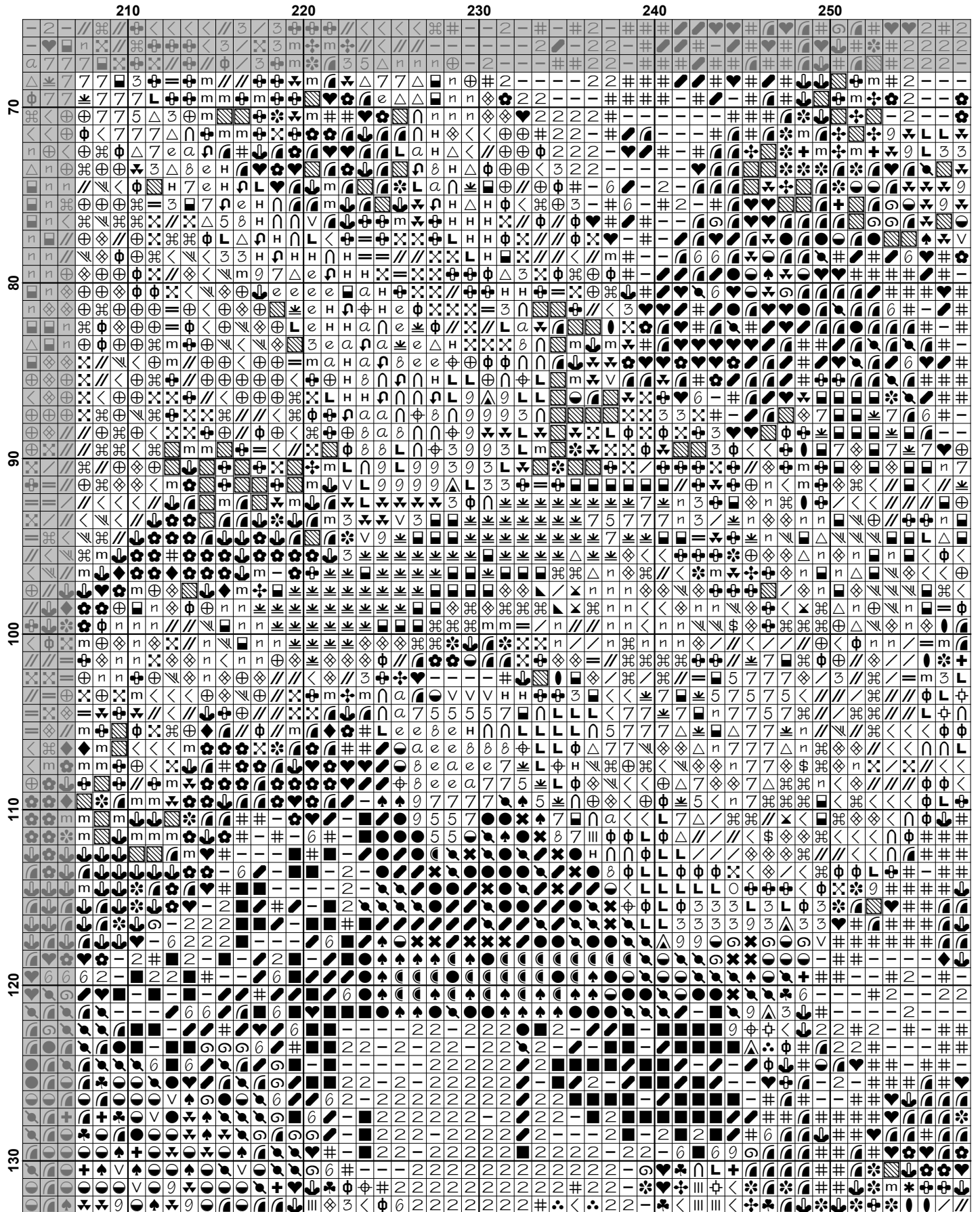


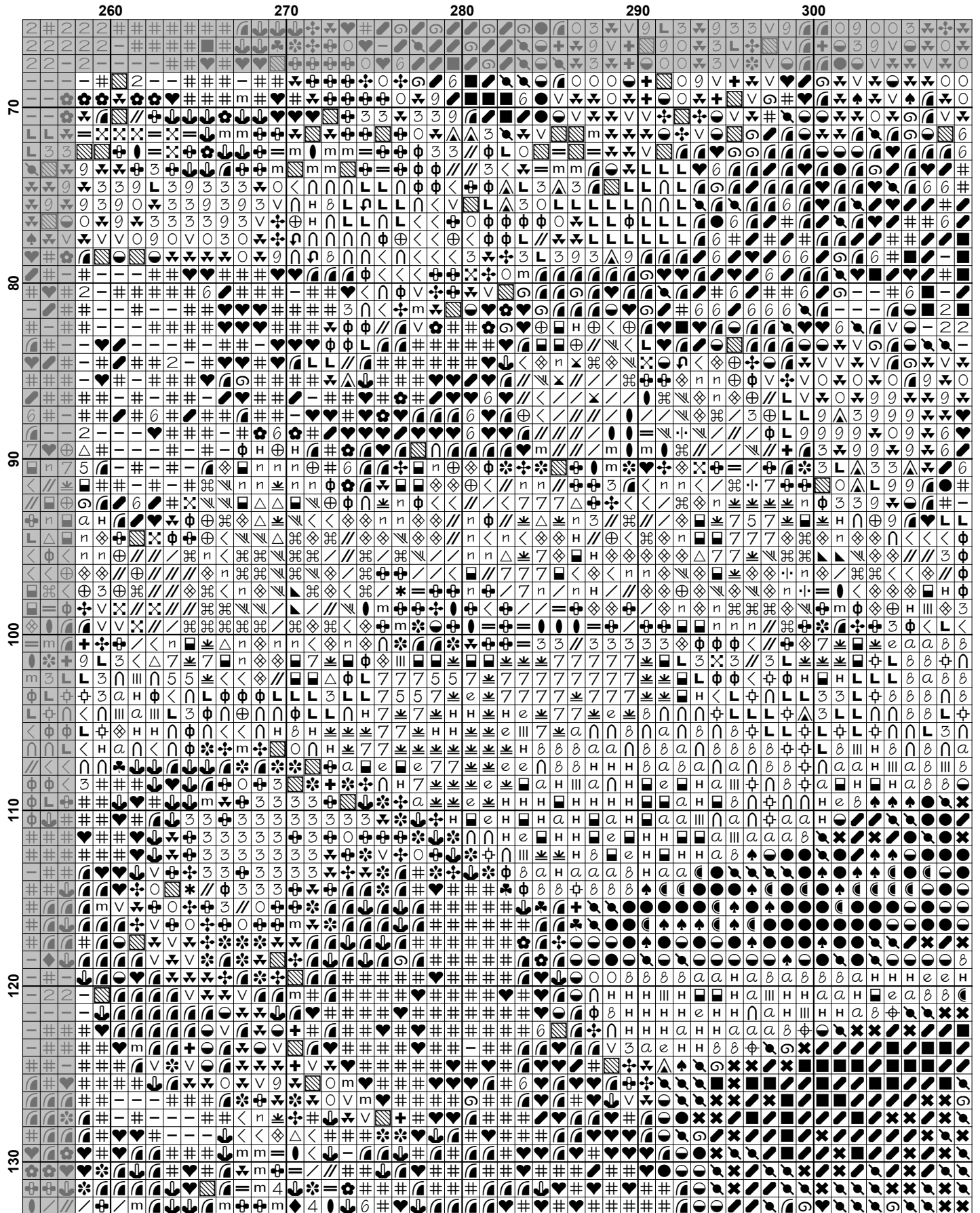


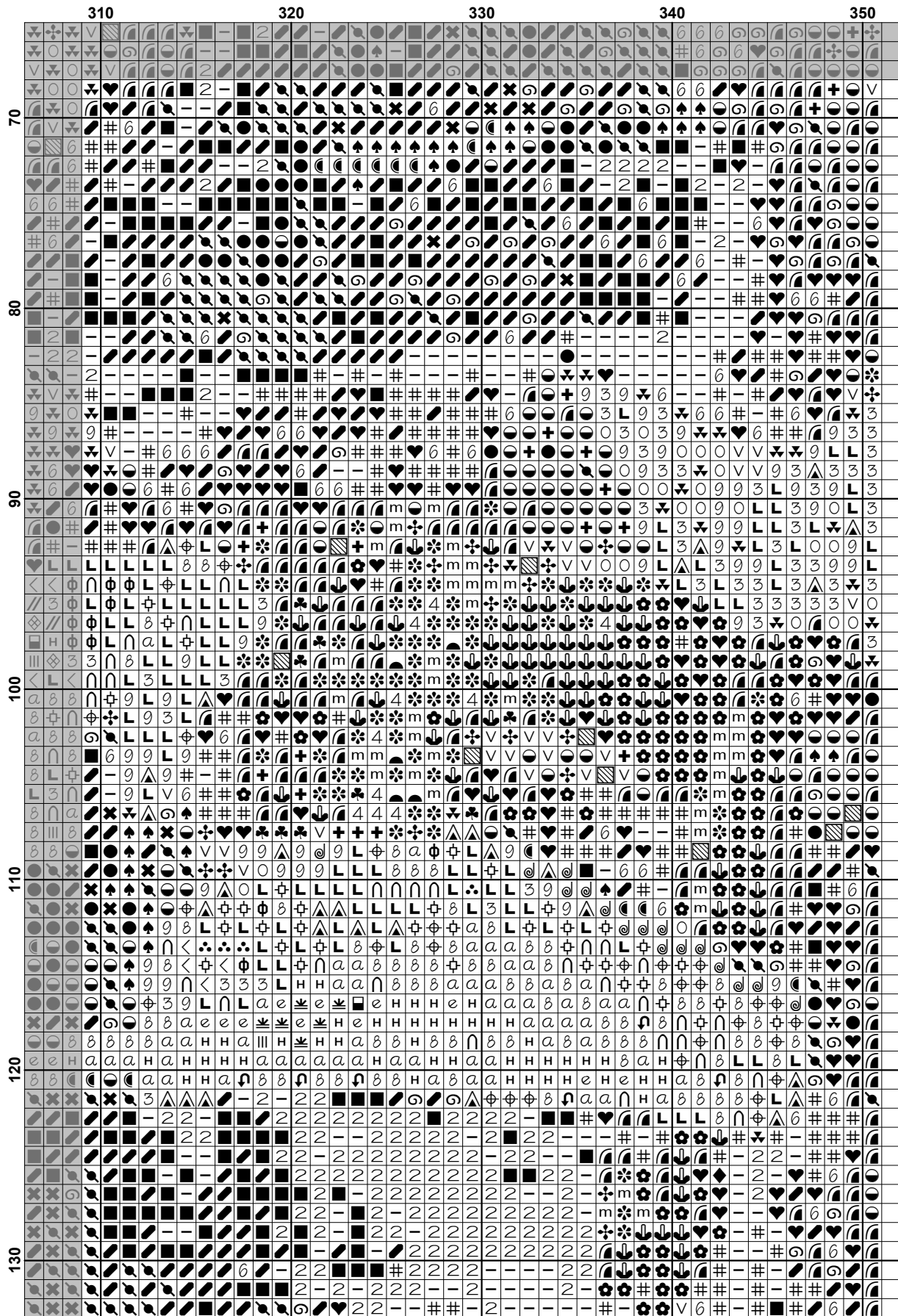


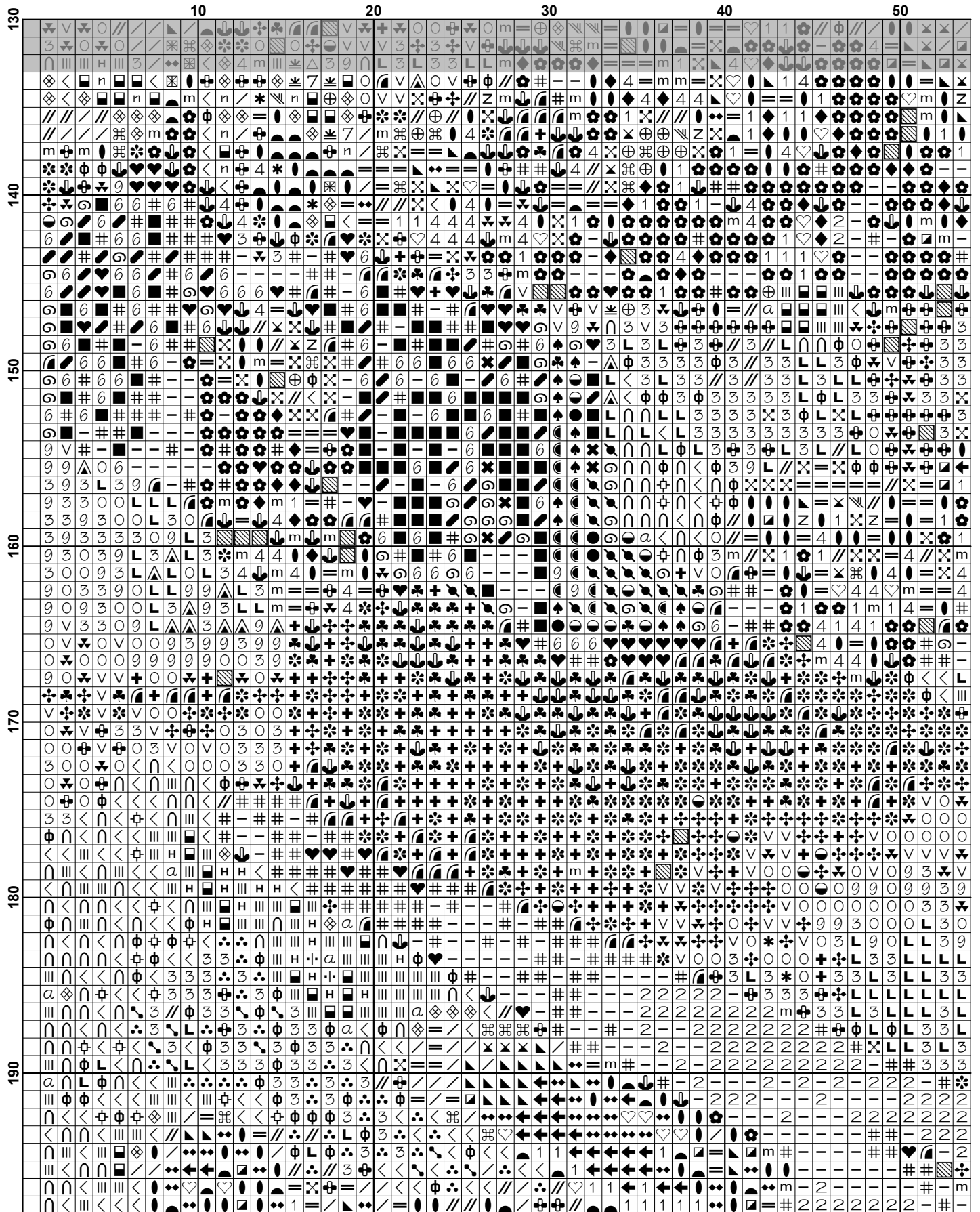


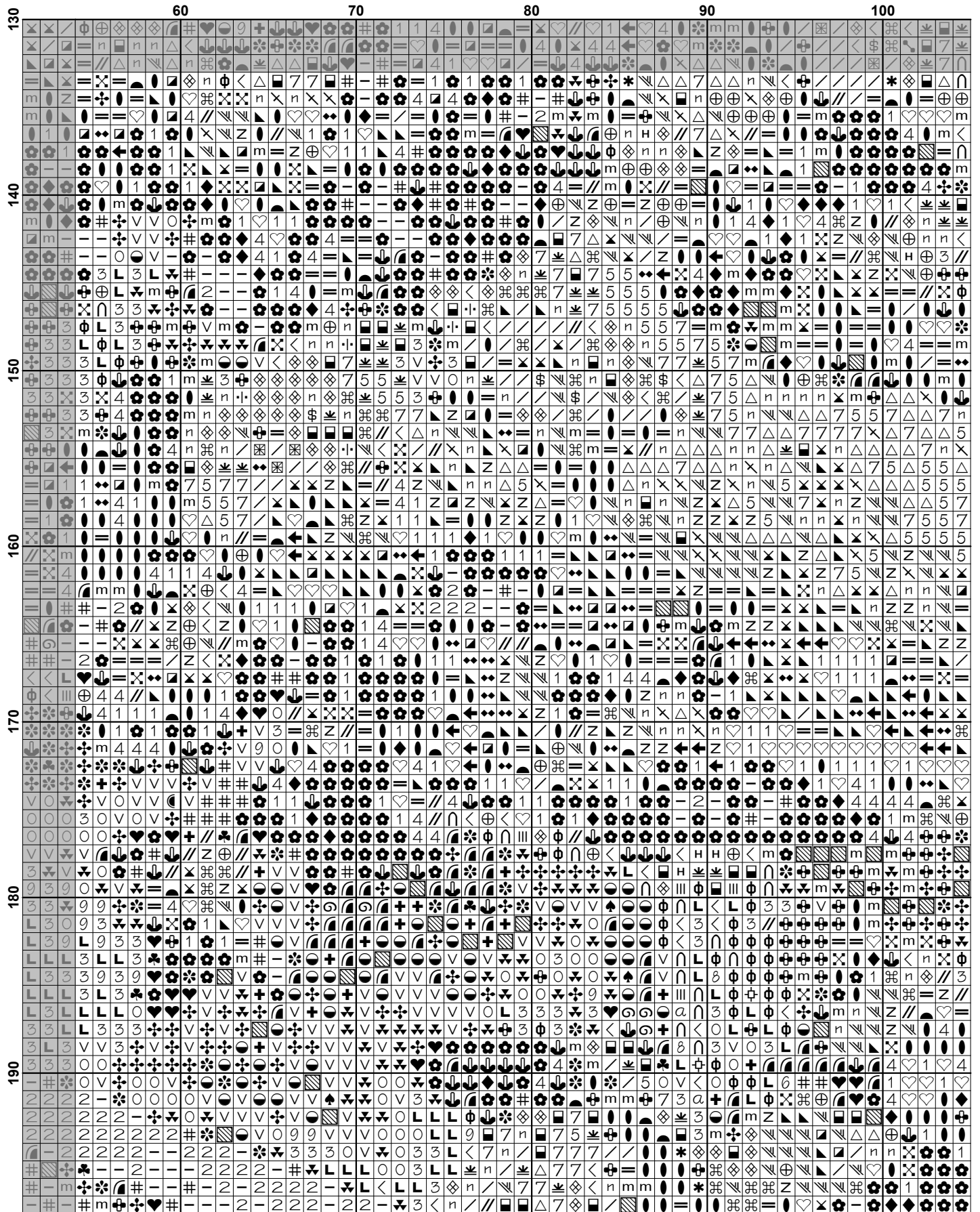


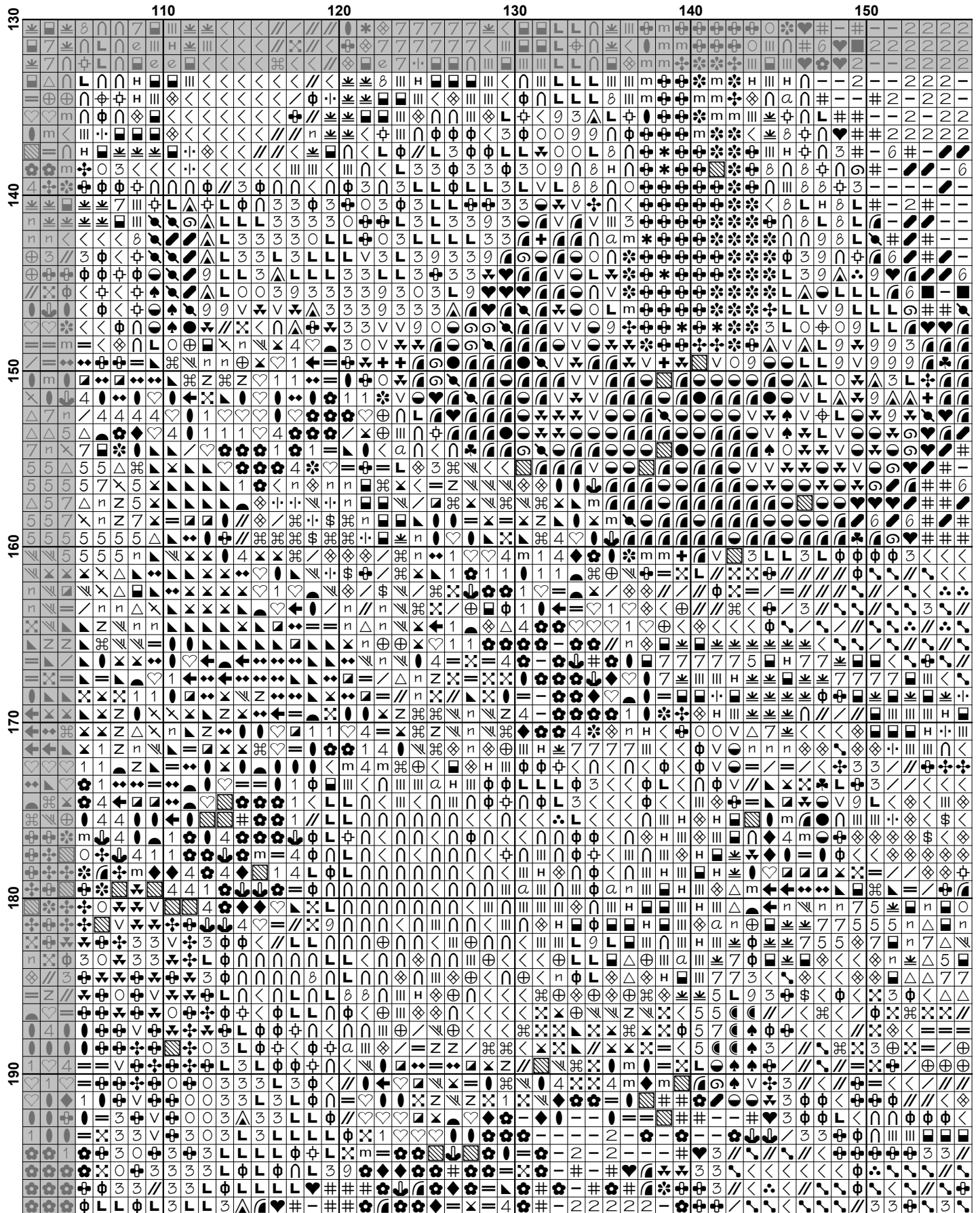


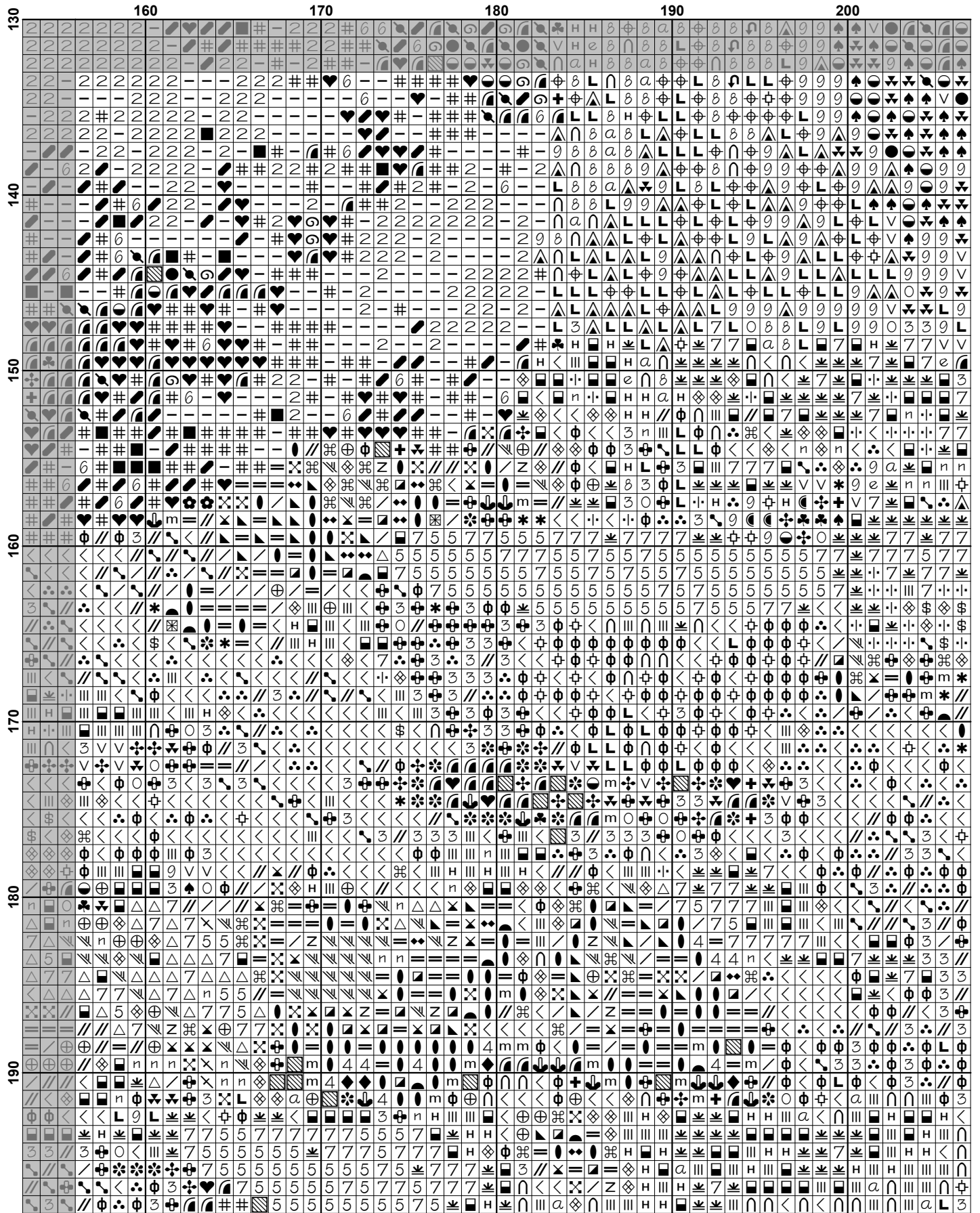


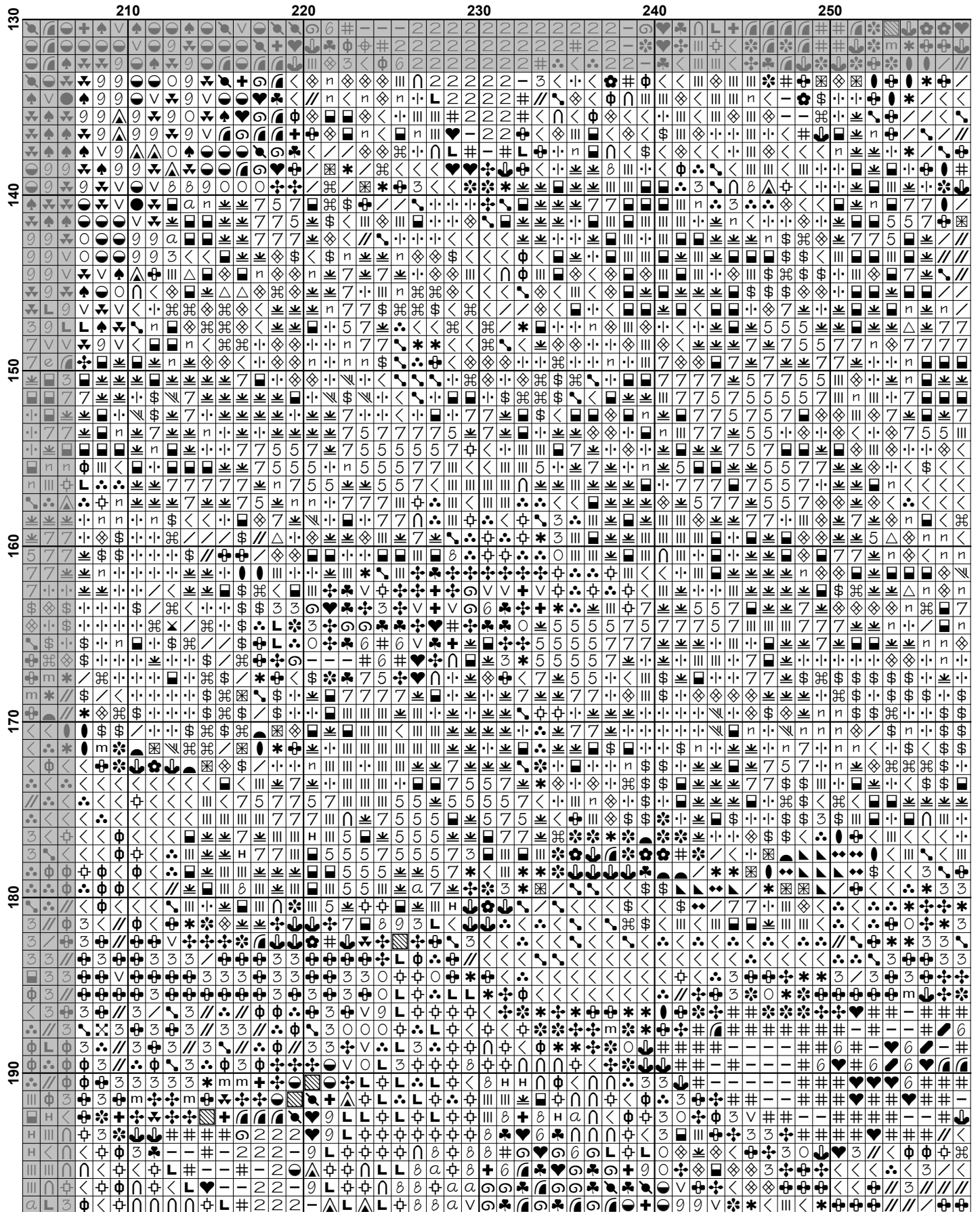


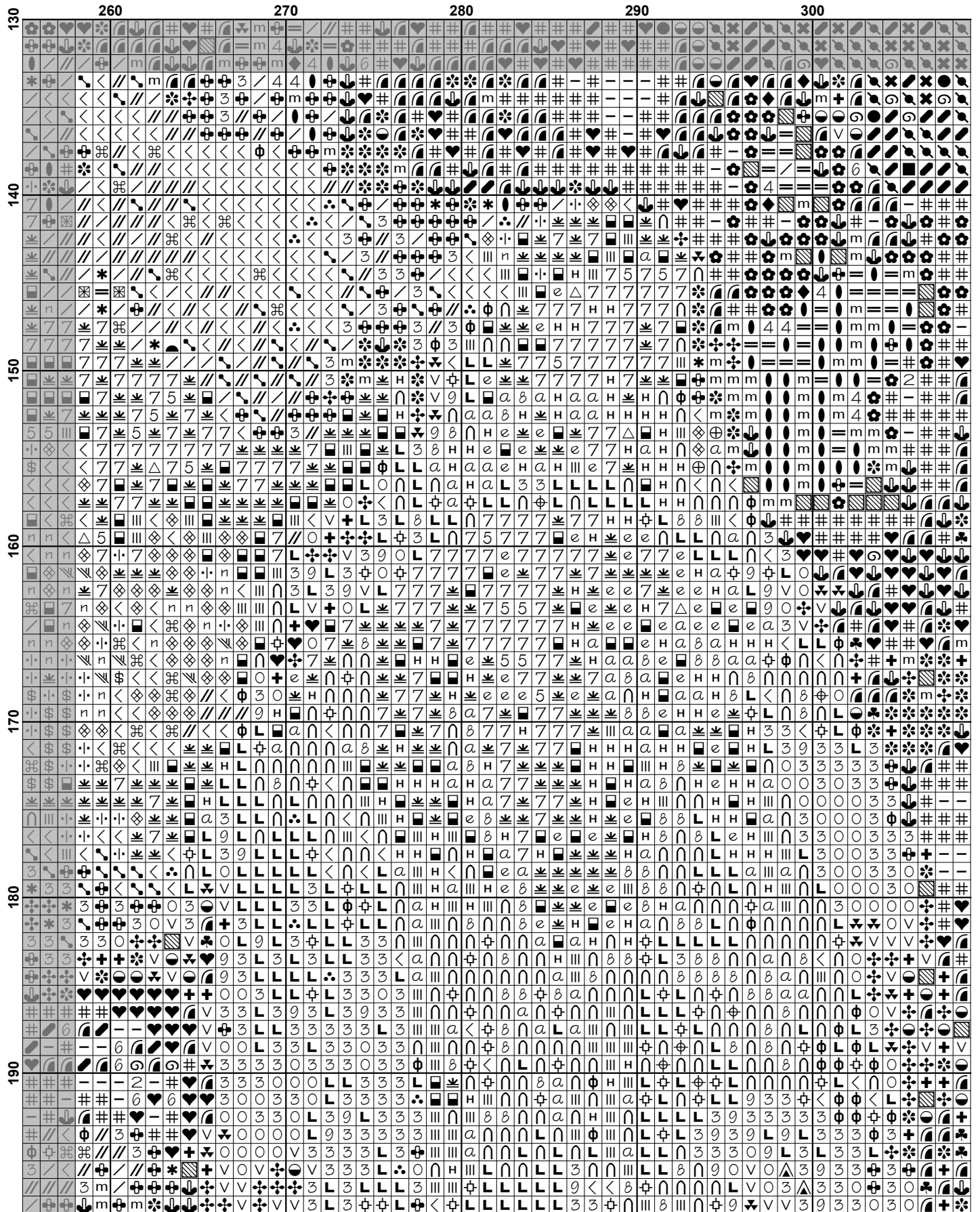


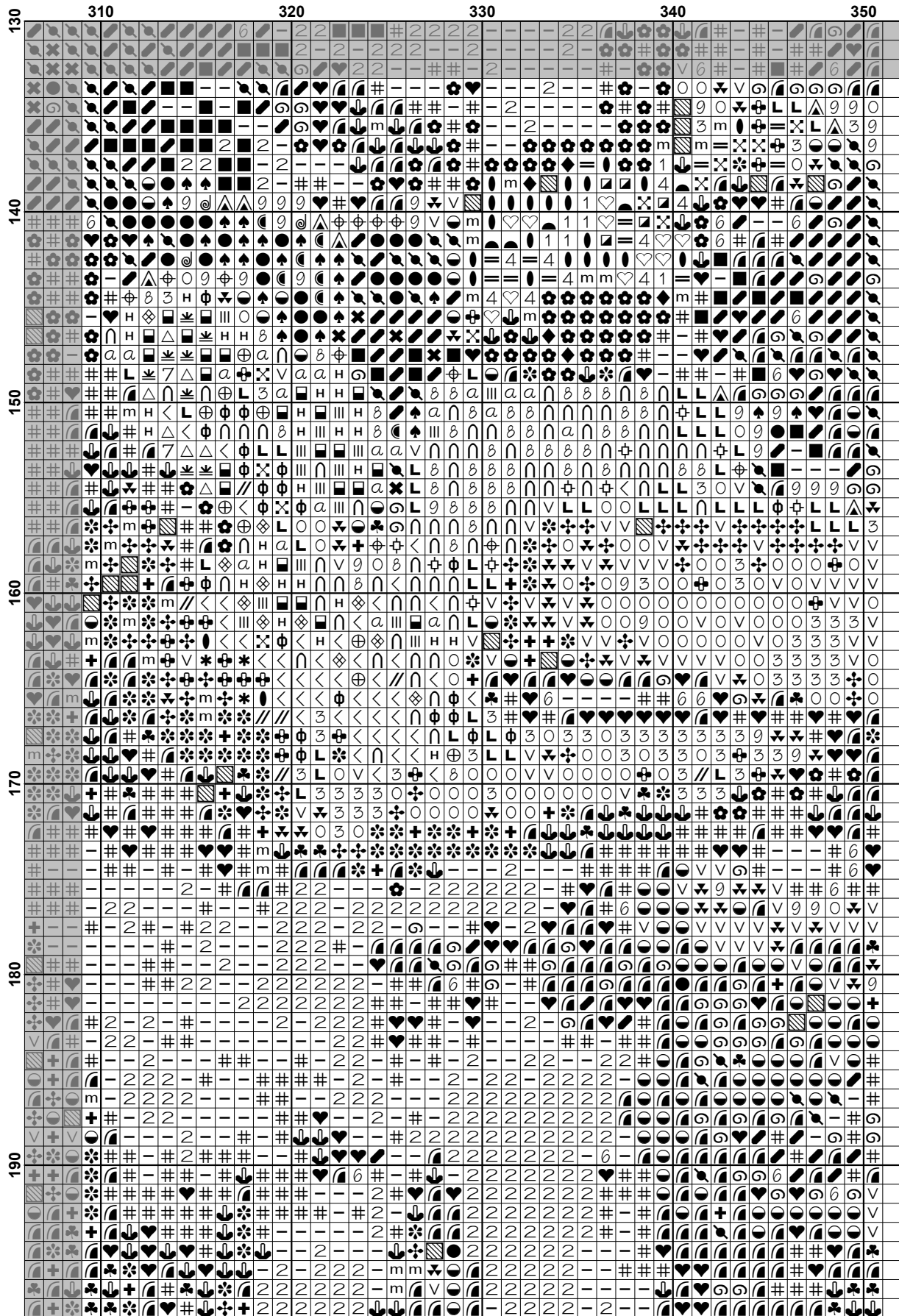


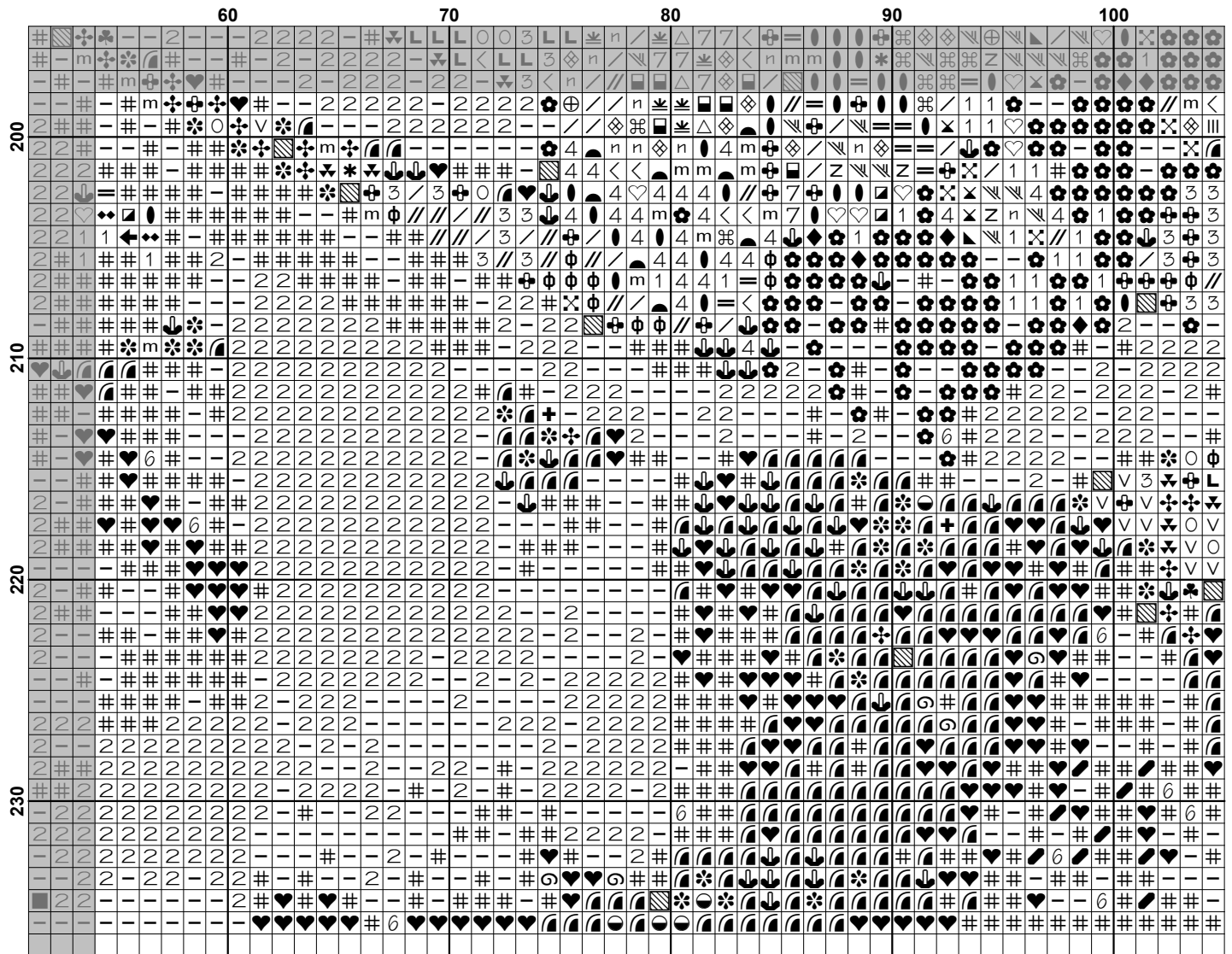


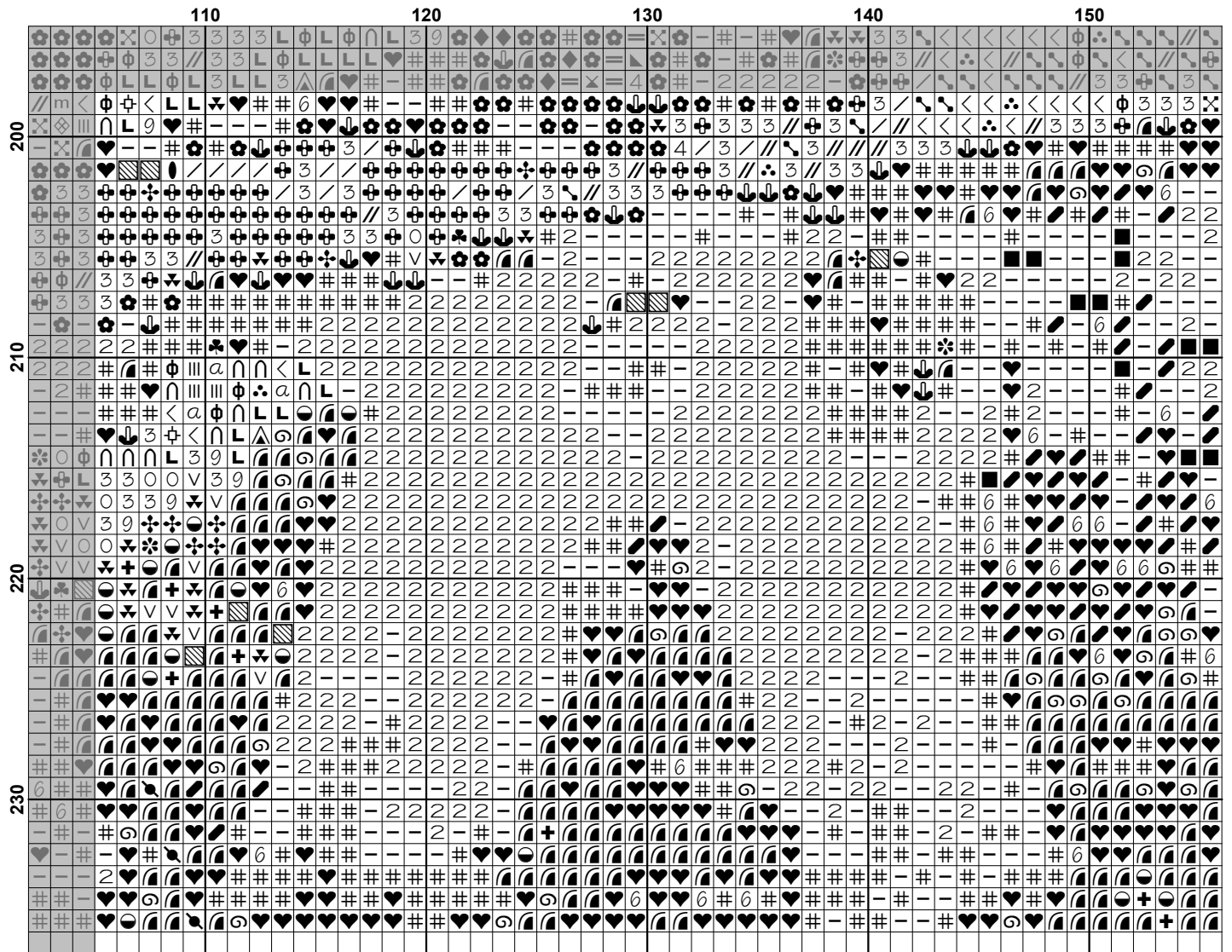


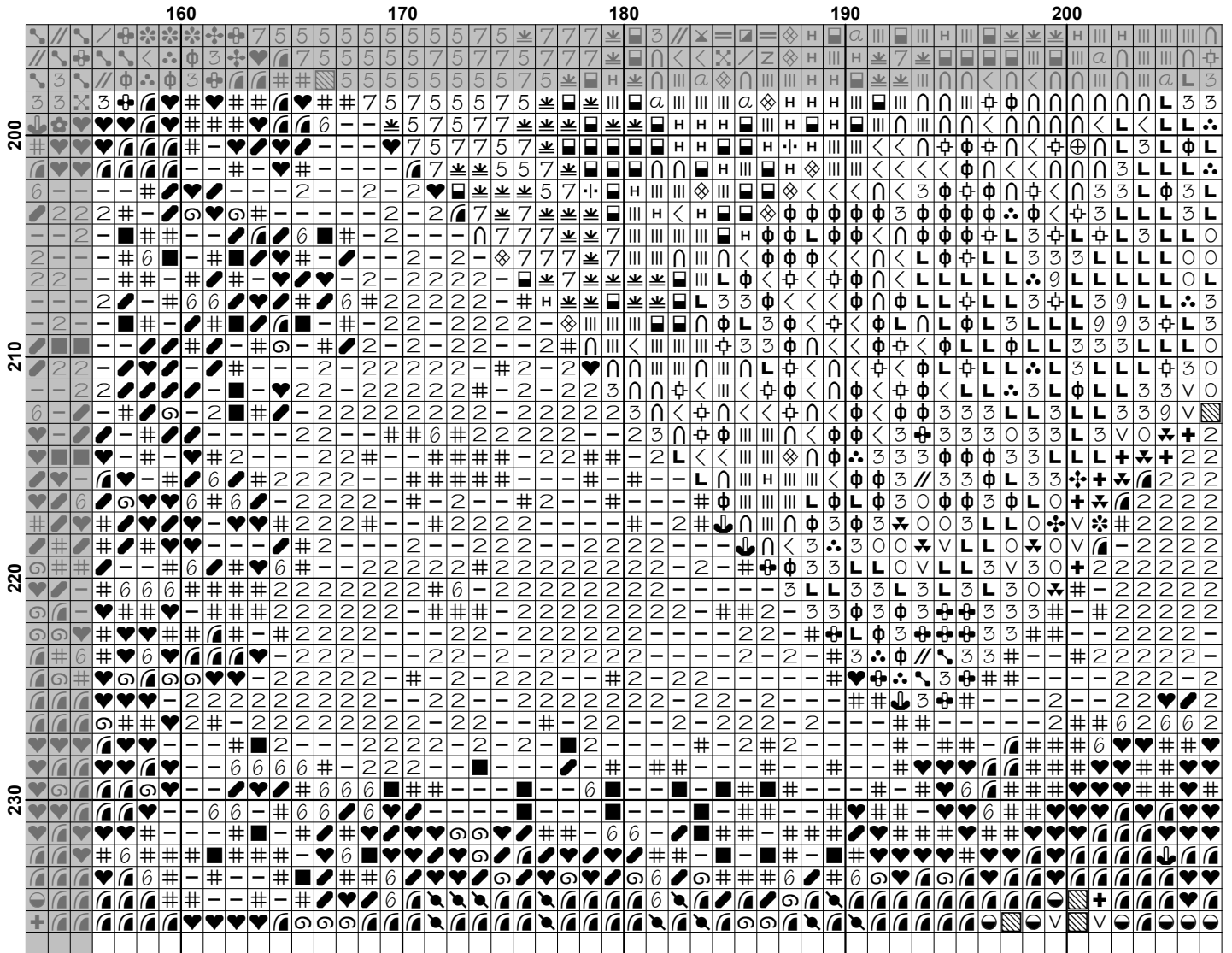


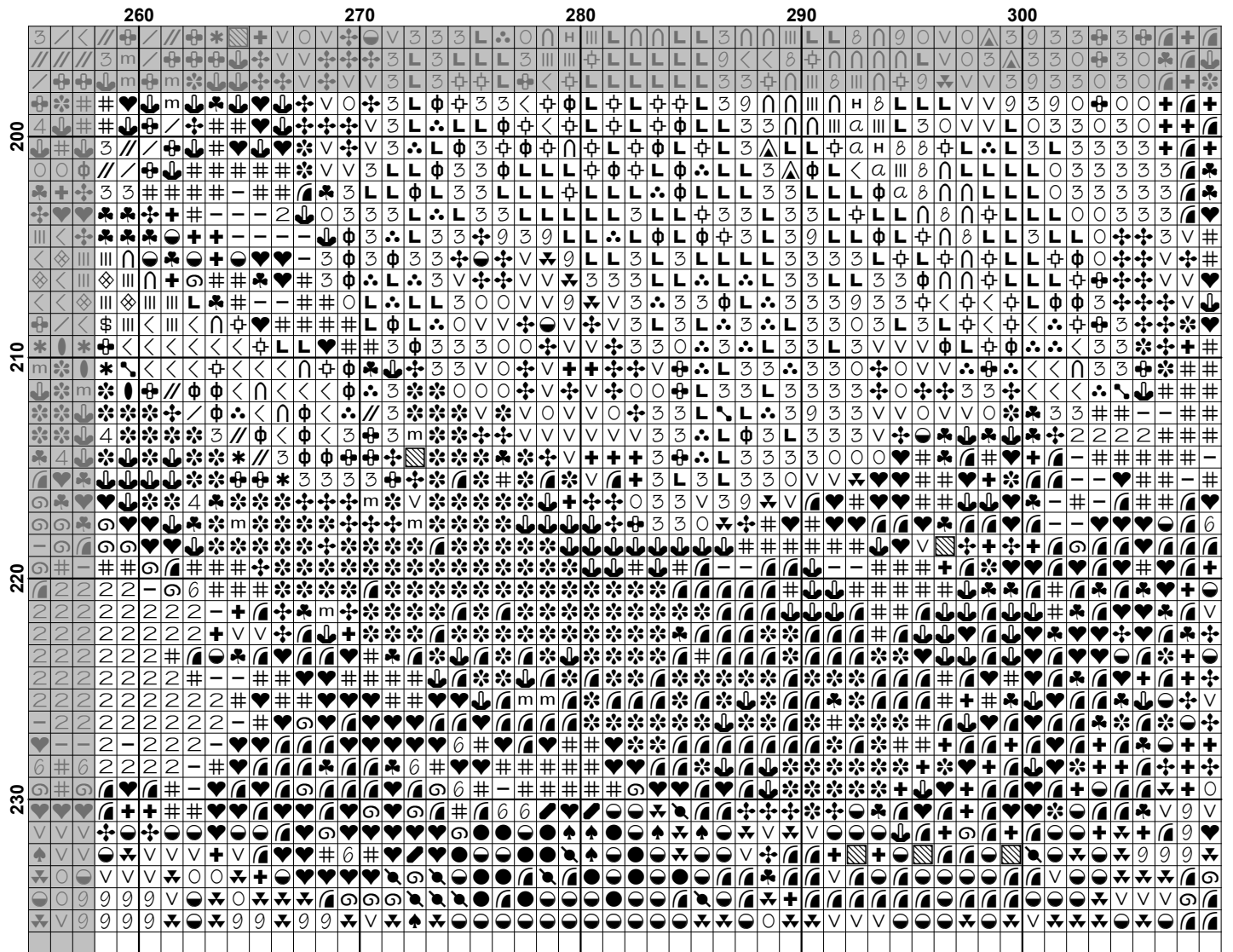


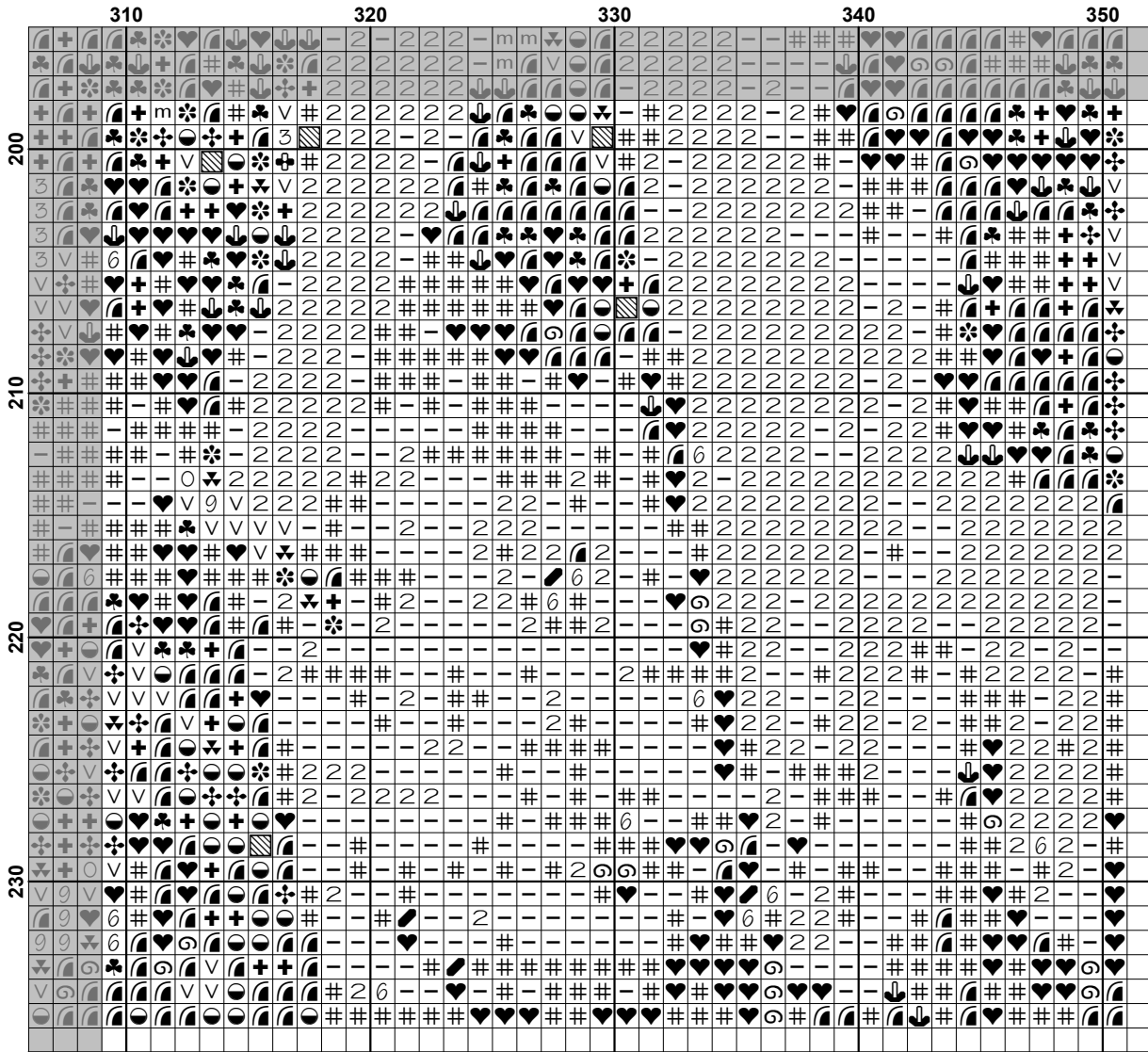













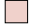


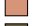

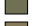











Pattern Name: The Clerkenwell Flower Makers
Designed By: Artwork by Samuel Melton Fisher
Company: Artecy Cross Stitch
Copyright: Copyright Artecy Cross Stitch. All rights Reserved.
Fabric: Aida 14, White
 350w X 235h Stitches
Size(s): 14 Count, 25w X 16-3/4h in
 16 Count, 21-7/8w X 14-5/8h in
 18 Count, 19-3/8w X 13h in

Floss Used for Full Stitches:

Symbol	Strands	Type	Number	Color
	x	2	DMC 151	Dusty Rose-VY LT
	⊕	2	DMC 152	Shell Pink-MD LT
	4	2	DMC 221	Shell Pink-VY DK
	⊗	2	DMC 223	Shell Pink-LT
	⊗	2	DMC 301	Mahogany-MD
	2	2	DMC 310	Black
	⊗	2	DMC 315	Antique Mauve-VY DK
	←	2	DMC 326	Rose-VY DK
	◆	2	DMC 347	Salmon-VY DK
	◐	2	DMC 355	Terra Cotta-DK
	/	2	DMC 356	Terra Cotta-MD
	⊕	2	DMC 372	Mustard-LT
	\$	2	DMC 402	Mahogany-VY LT
	⊕	2	DMC 407	Desert Sand-DK
	*	2	DMC 420	Hazelnut Brown-DK
	↶	2	DMC 452	Shell Gray-MD
	@	2	DMC 522	Fern Green
	●	2	DMC 535	Ash Gray-VY LT
	+	2	DMC 610	Drab Brown-DK
	α	2	DMC 613	Drab Brown-VY LT
	✻	2	DMC 632	Desert Sand-UL VY DK
	9	2	DMC 640	Beige Gray-VY DK
	♣	2	DMC 645	Beaver Gray-VY DK
	⊕	2	DMC 647	Beaver Gray-MD
		2	DMC 738	Tan-VY LT
	■	2	DMC 754	Peach-LT
	⊕	2	DMC 758	Terra Cotta-VY LT
	⊗	2	DMC 760	Salmon
	1	2	DMC 777	Raspberry-VY DK
	⊗	2	DMC 779	Cocoa-DK
	♥	2	DMC 816	Garnet
	♥	2	DMC 838	Beige Brown-VY DK
	○	2	DMC 840	Beige Brown-MD
	L	2	DMC 841	Beige Brown-LT
	H	2	DMC 842	Beige Brown-VY LT
	♣	2	DMC 844	Beaver Brown-UL DK
	⊕	2	DMC 902	Garnet-VY DK
	■	2	DMC 934	Black Avocado Green
	⊗	2	DMC 935	Avocado Green-DK
	#	2	DMC 938	Coffee Brown-UL DK
	≠	2	DMC 951	Tawny-LT
	⊕	2	DMC 3021	Brown Gray-VY DK
	△	2	DMC 3022	Brown Gray-MD
	6	2	DMC 3031	Mocha Brown-VY DK
	e	2	DMC 3033	Mocha Brown-VY LT

Symbol	Strands	Type	Number	Color
	2	DMC	3045	Yellow Beige-DK
<	2	DMC	3064	Desert Sand
	2	DMC	3328	Salmon-DK
	2	DMC	3350	Dusty Rose-UL DK
	2	DMC	3363	Pine Green-MD
-	2	DMC	3371	Black Brown
	2	DMC	3685	Mauve-DK
x	2	DMC	3712	Salmon-MD
	2	DMC	3713	Salmon-VY LT
	2	DMC	3721	Shell Pink-DK
=	2	DMC	3722	Shell Pink-MD
7	2	DMC	3770	Tawny-VY LT
	2	DMC	3772	Desert Sand-VY DK
	2	DMC	3778	Terra Cotta-LT
	2	DMC	3781	Mocha Brown-DK
8	2	DMC	3782	Mocha Brown-LT
	2	DMC	3787	Brown Gray-DK
v	2	DMC	3790	Beige Gray-UL DK
	2	DMC	3799	Pewter Gray-VY DK
n	2	DMC	3824	Apricot-LT
	2	DMC	3828	Hazel nut Brown
z	2	DMC	3833	Raspberry-LT
	2	DMC	3856	Mahogany-UL VY LT
	2	DMC	3857	Rosewood-DK
m	2	DMC	3858	Rosewood-MD
//	2	DMC	3859	Rosewood-LT
	2	DMC	3860	Cocoa
	2	DMC	3862	Mocha Beige-DK
3	2	DMC	3863	Mocha Beige-MD
	2	DMC	3864	Mocha Beige-LT
5	2	DMC	3865	Winter White

Notes:

The middle of this pattern can be found on page 11 and is 176 stitches across and 119 stitches down.

Pattern layout using page numbers in top left.

```

1 2 3 4 5 6 7
8 9 10 11 12 13 14
15 16 17 18 19 20 21
22 23 24 25 26 27 28

```


Usage Summary

Strands Per Skein: 6

Skein Length: 313.0 in

Type	Number	Full	Half	Quarter	Petite	Back(in)	Str(in)	Spec(in)	French	Bead	Skein Est.
DMC 151	151	51	0	0	0	0.0	0.0	0.0	0	0	1.000
DMC 152	152	377	0	0	0	0.0	0.0	0.0	0	0	1.000
DMC 221	221	283	0	0	0	0.0	0.0	0.0	0	0	1.000
DMC 223	223	396	0	0	0	0.0	0.0	0.0	0	0	1.000
DMC 301	301	37	0	0	0	0.0	0.0	0.0	0	0	1.000
DMC 310	310	6161	0	0	0	0.0	0.0	0.0	0	0	4.000
DMC 315	315	810	0	0	0	0.0	0.0	0.0	0	0	1.000
DMC 326	326	93	0	0	0	0.0	0.0	0.0	0	0	1.000
DMC 347	347	143	0	0	0	0.0	0.0	0.0	0	0	1.000
DMC 355	355	162	0	0	0	0.0	0.0	0.0	0	0	1.000
DMC 356	356	585	0	0	0	0.0	0.0	0.0	0	0	1.000
DMC 372	372	508	0	0	0	0.0	0.0	0.0	0	0	1.000
DMC 402	402	158	0	0	0	0.0	0.0	0.0	0	0	1.000
DMC 407	407	981	0	0	0	0.0	0.0	0.0	0	0	1.000
DMC 420	420	193	0	0	0	0.0	0.0	0.0	0	0	1.000
DMC 452	452	277	0	0	0	0.0	0.0	0.0	0	0	1.000
DMC 522	522	29	0	0	0	0.0	0.0	0.0	0	0	1.000
DMC 535	535	529	0	0	0	0.0	0.0	0.0	0	0	1.000
DMC 610	610	836	0	0	0	0.0	0.0	0.0	0	0	1.000
DMC 613	613	769	0	0	0	0.0	0.0	0.0	0	0	1.000
DMC 632	632	1592	0	0	0	0.0	0.0	0.0	0	0	1.000
DMC 640	640	1384	0	0	0	0.0	0.0	0.0	0	0	1.000
DMC 645	645	562	0	0	0	0.0	0.0	0.0	0	0	1.000
DMC 647	647	291	0	0	0	0.0	0.0	0.0	0	0	1.000
DMC 738	738	757	0	0	0	0.0	0.0	0.0	0	0	1.000
DMC 754	754	1071	0	0	0	0.0	0.0	0.0	0	0	1.000
DMC 758	758	835	0	0	0	0.0	0.0	0.0	0	0	1.000
DMC 760	760	354	0	0	0	0.0	0.0	0.0	0	0	1.000
DMC 777	777	318	0	0	0	0.0	0.0	0.0	0	0	1.000
DMC 779	779	5372	0	0	0	0.0	0.0	0.0	0	0	3.000
DMC 816	816	234	0	0	0	0.0	0.0	0.0	0	0	1.000
DMC 838	838	3147	0	0	0	0.0	0.0	0.0	0	0	2.000
DMC 840	840	1353	0	0	0	0.0	0.0	0.0	0	0	1.000
DMC 841	841	2448	0	0	0	0.0	0.0	0.0	0	0	2.000
DMC 842	842	1206	0	0	0	0.0	0.0	0.0	0	0	1.000
DMC 844	844	954	0	0	0	0.0	0.0	0.0	0	0	1.000
DMC 902	902	1555	0	0	0	0.0	0.0	0.0	0	0	1.000
DMC 934	934	1076	0	0	0	0.0	0.0	0.0	0	0	1.000
DMC 935	935	105	0	0	0	0.0	0.0	0.0	0	0	1.000
DMC 938	938	5939	0	0	0	0.0	0.0	0.0	0	0	4.000
DMC 951	951	1341	0	0	0	0.0	0.0	0.0	0	0	1.000
DMC 3021	3021	1025	0	0	0	0.0	0.0	0.0	0	0	1.000
DMC 3022	3022	579	0	0	0	0.0	0.0	0.0	0	0	1.000
DMC 3031	3031	955	0	0	0	0.0	0.0	0.0	0	0	1.000
DMC 3033	3033	357	0	0	0	0.0	0.0	0.0	0	0	1.000
DMC 3045	3045	328	0	0	0	0.0	0.0	0.0	0	0	1.000
DMC 3064	3064	2032	0	0	0	0.0	0.0	0.0	0	0	2.000
DMC 3328	3328	279	0	0	0	0.0	0.0	0.0	0	0	1.000
DMC 3350	3350	118	0	0	0	0.0	0.0	0.0	0	0	1.000
DMC 3363	3363	139	0	0	0	0.0	0.0	0.0	0	0	1.000
DMC 3371	3371	6344	0	0	0	0.0	0.0	0.0	0	0	4.000

Type	Number	Full	Half	Quarter	Petite	Back(in)	Str(in)	Spec(in)	French	Bead	Skein Est.
■ DMC	3685	145	0	0	0	0.0	0.0	0.0	0	0	1.000
■ DMC	3712	195	0	0	0	0.0	0.0	0.0	0	0	1.000
■ DMC	3713	228	0	0	0	0.0	0.0	0.0	0	0	1.000
■ DMC	3721	730	0	0	0	0.0	0.0	0.0	0	0	1.000
■ DMC	3722	593	0	0	0	0.0	0.0	0.0	0	0	1.000
■ DMC	3770	1066	0	0	0	0.0	0.0	0.0	0	0	1.000
■ DMC	3772	1618	0	0	0	0.0	0.0	0.0	0	0	1.000
■ DMC	3778	462	0	0	0	0.0	0.0	0.0	0	0	1.000
■ DMC	3781	435	0	0	0	0.0	0.0	0.0	0	0	1.000
■ DMC	3782	915	0	0	0	0.0	0.0	0.0	0	0	1.000
■ DMC	3787	2143	0	0	0	0.0	0.0	0.0	0	0	2.000
■ DMC	3790	1810	0	0	0	0.0	0.0	0.0	0	0	2.000
■ DMC	3799	2472	0	0	0	0.0	0.0	0.0	0	0	2.000
■ DMC	3824	533	0	0	0	0.0	0.0	0.0	0	0	1.000
■ DMC	3828	310	0	0	0	0.0	0.0	0.0	0	0	1.000
■ DMC	3833	124	0	0	0	0.0	0.0	0.0	0	0	1.000
■ DMC	3856	356	0	0	0	0.0	0.0	0.0	0	0	1.000
■ DMC	3857	1285	0	0	0	0.0	0.0	0.0	0	0	1.000
■ DMC	3858	802	0	0	0	0.0	0.0	0.0	0	0	1.000
■ DMC	3859	842	0	0	0	0.0	0.0	0.0	0	0	1.000
■ DMC	3860	1785	0	0	0	0.0	0.0	0.0	0	0	1.000
■ DMC	3862	1351	0	0	0	0.0	0.0	0.0	0	0	1.000
■ DMC	3863	2452	0	0	0	0.0	0.0	0.0	0	0	2.000
■ DMC	3864	1750	0	0	0	0.0	0.0	0.0	0	0	1.000
■ DMC	3865	420	0	0	0	0.0	0.0	0.0	0	0	1.000