

Artecy

CROSS STITCH

Mini Those Eyes



* Original image© Cocoparisienne - Pixabay.
Cross Stitch Design by Tereena Clarke.

Completed Size = 200w x 183h Stitches

14 Count, 14.5w x 13h inches (37cm x 33cm)

16 Count, 12.5w x 11.5h inches (32cm x 29cm)

18 Count, 11.5w x 10.5h inches (29cm x 27cm)

Uses 47 DMC cotton colours. Only full cross stitches are used in this pattern.

Pattern Instructions

* This pattern can be worked on any fabric type, colour or count you prefer. To work out the size of the finished article, take the number of stitches wide and high and divide it by the count of your fabric (e.g. 14,16,18 count aida etc) to get the size in inches. Times it by 2.54 to get centimetres. We have the sizes in inches shown on the previous page. Also leave at least a few inches of fabric around each side of the design to assist in framing. The higher the fabric count the smaller the completed project will be.

* To put the pattern together look in the top and bottom corners. The page numbers in brackets show which page number it joins up to. Page 1 always starts at the top left hand side of the pattern. Our pages also have a shaded grey section. This indicates a 3 row overlap from adjoining pages to assist with reading the pattern. PLEASE DO NOT RESTITCH THIS AREA.

* You should begin at the centre of the pattern. To find the centre of the pattern it is just a matter of laying the pattern out and locating the arrows at the top and left hand side of the patterns, they are determined by dividing the stitch numbers wide and high in half. Where the two points meet in the middle, that is the centre.

* If you need more assistance to find the middle of your pattern or the page layout, please see the notes section on the colour symbol chart. The easiest way to stitch this pattern, as it has multiple pages, is to stitch one page at a time.

* We suggest using two strands of floss for each stitch and one strand for backstitching if the pattern calls for it.

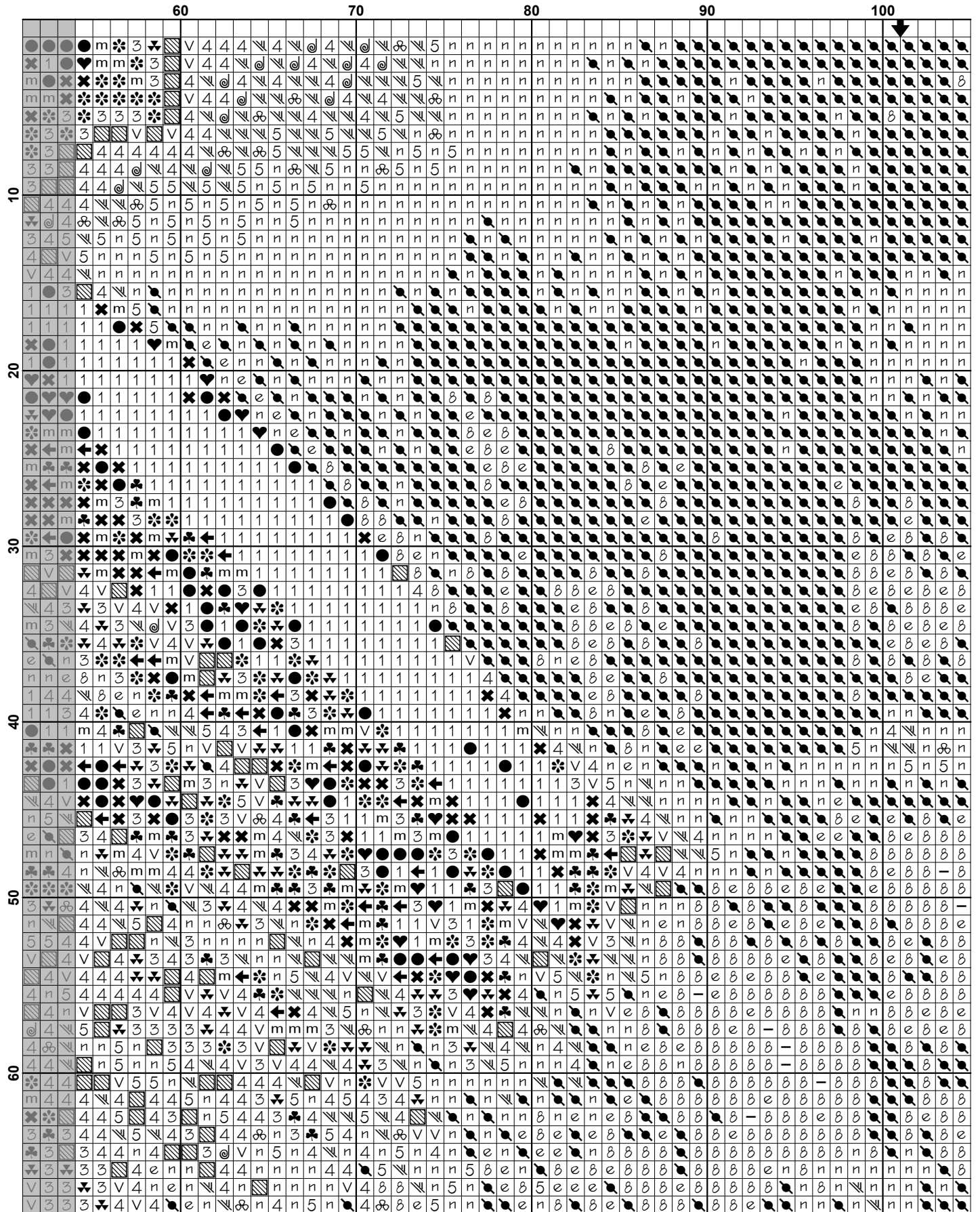
We hope you enjoy stitching our pattern.

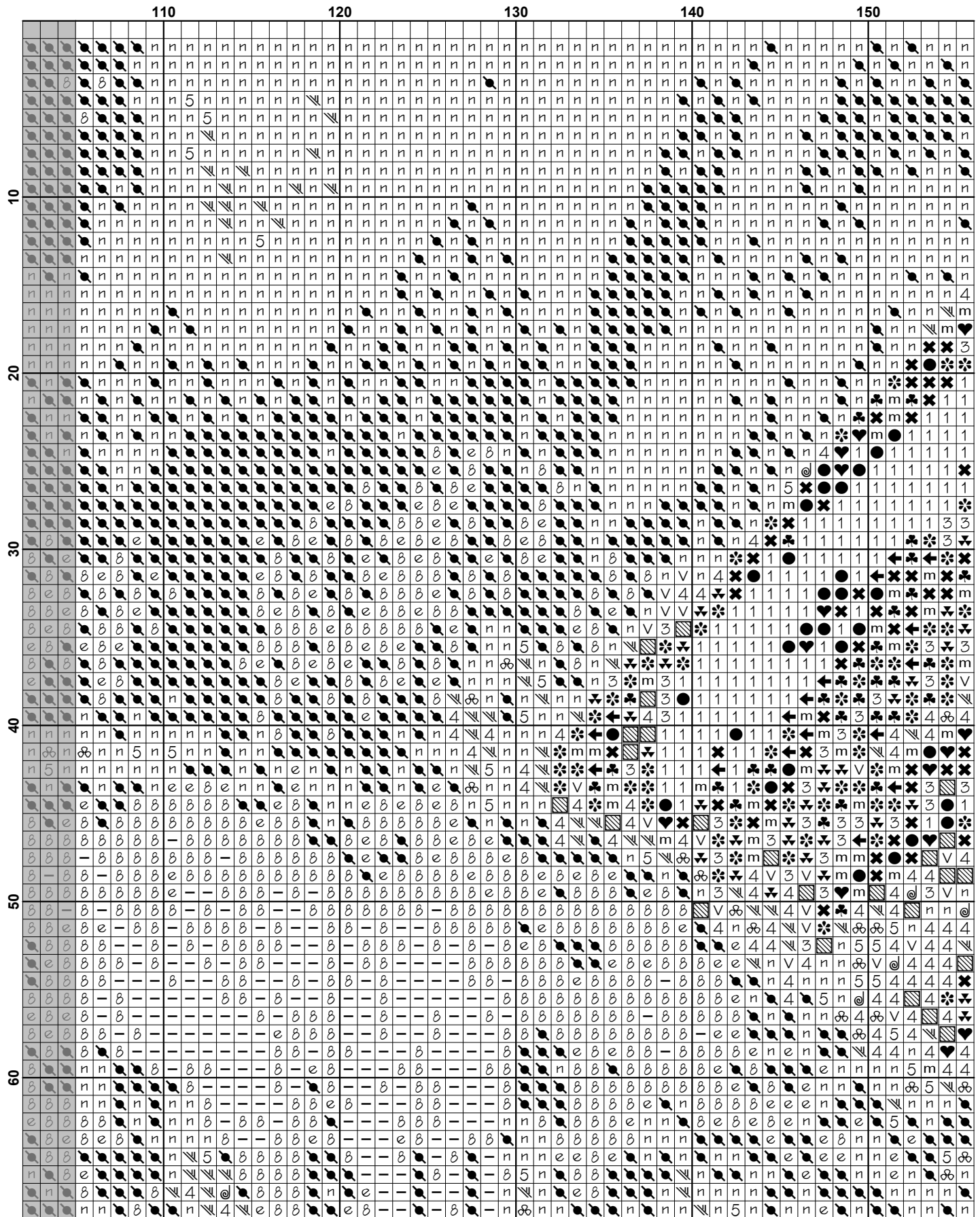
Thanks and Best Wishes
Tereena Clarke

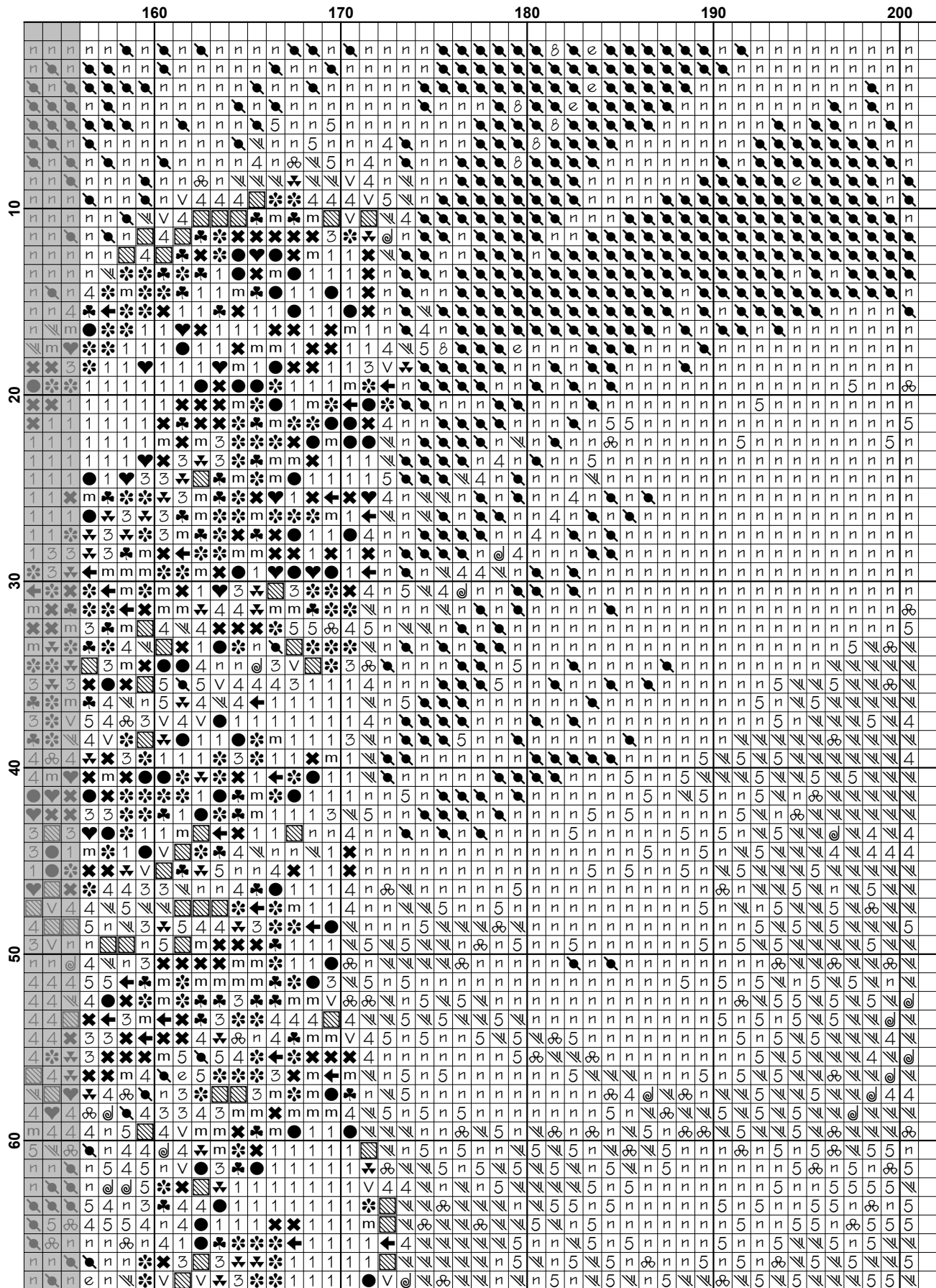
Artecy Cross Stitch
Po Box 3474
Tuggerah, NSW 2259
Australia

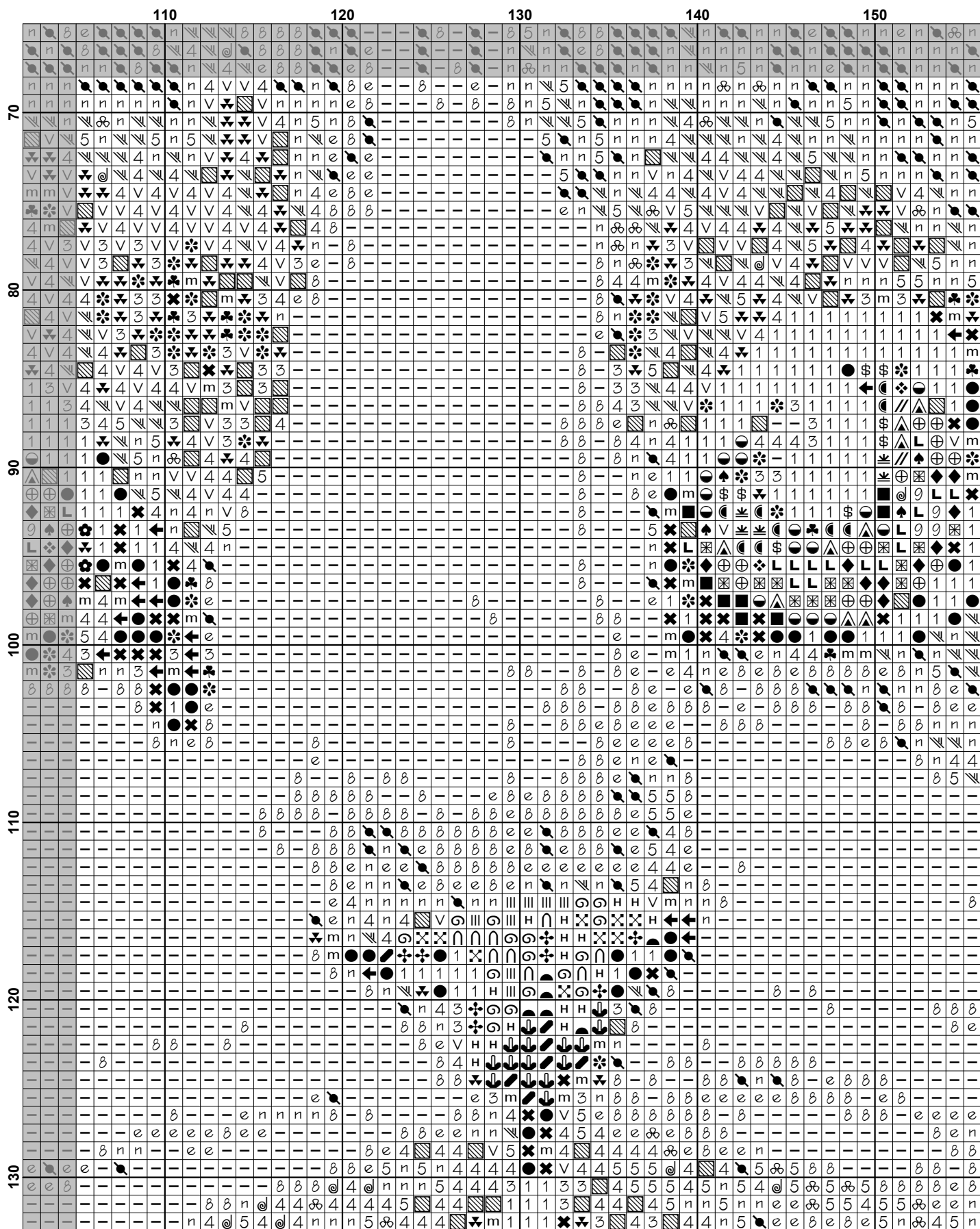
Websites: www.artecy.com and www.artecyshop.com
Email: artecy@artecy.com or stitch@artecyshop.com

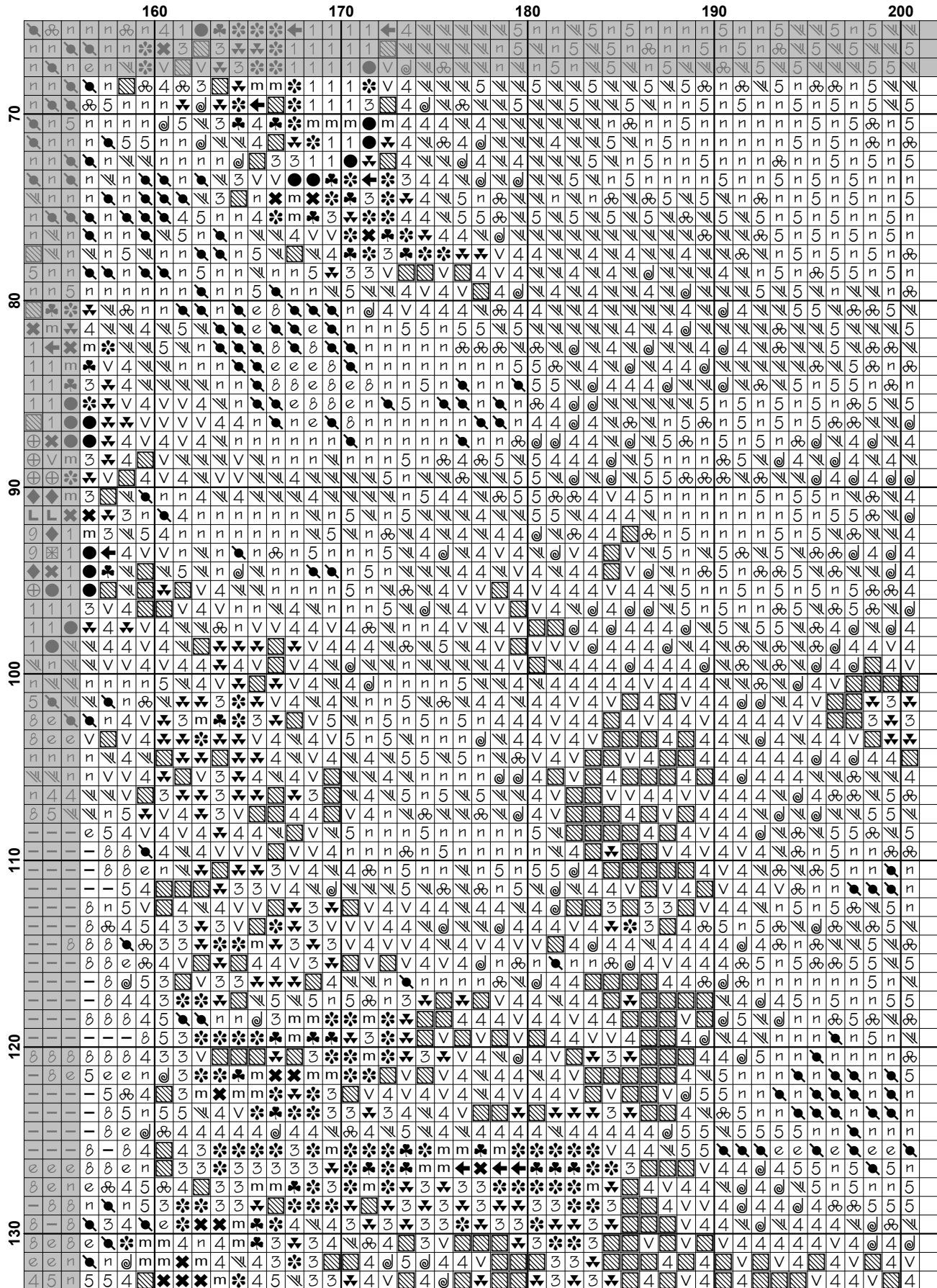
*Patterns are strictly for personal use only. It is against our copyright to make kits for sale from our designs or to sell, copy or redistribute this pattern in any form. You may not upload our patterns to any internet forums or groups or any other website. You may make 1 copy of this pattern for a working copy for your own personal use if needed.



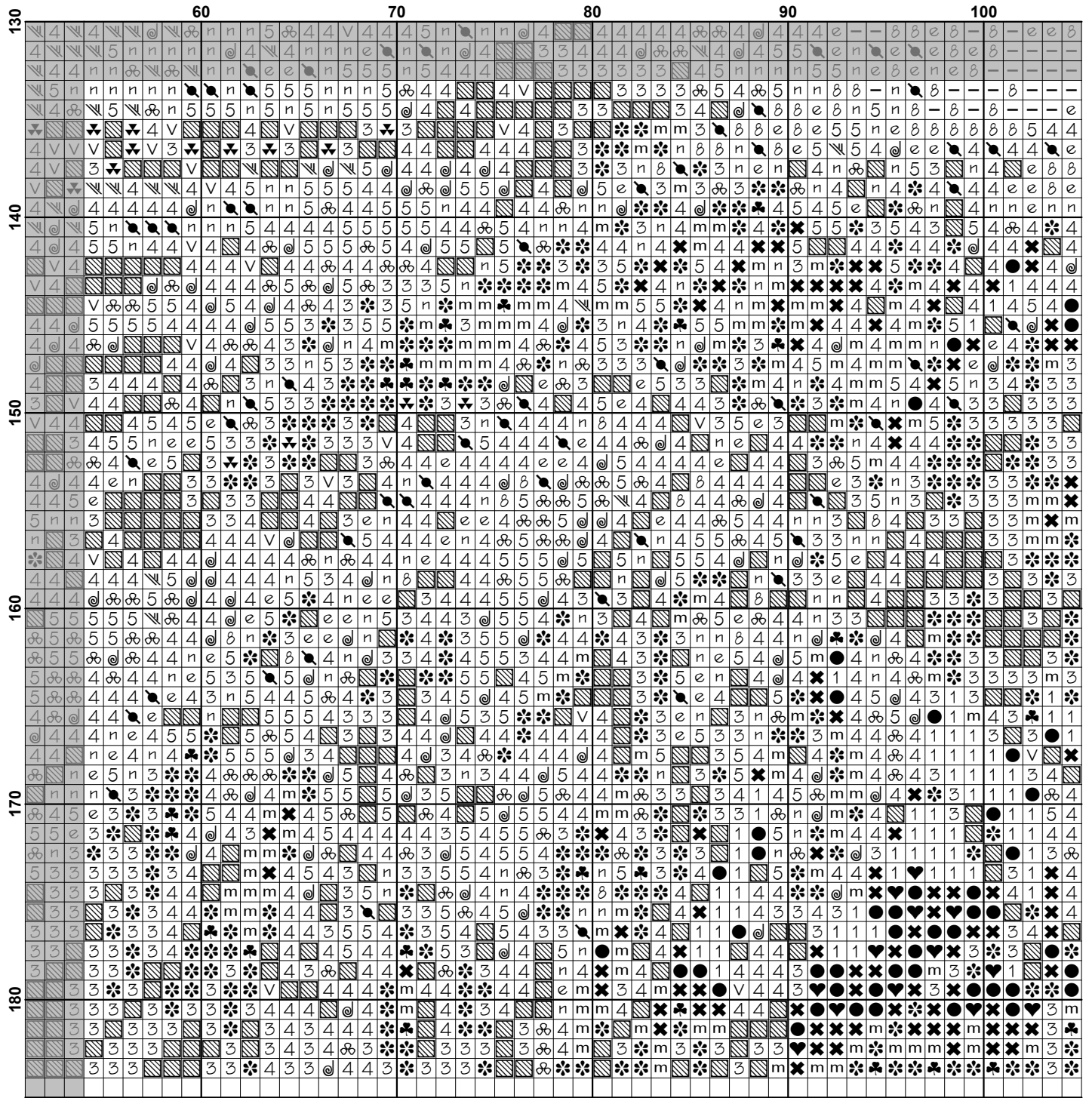


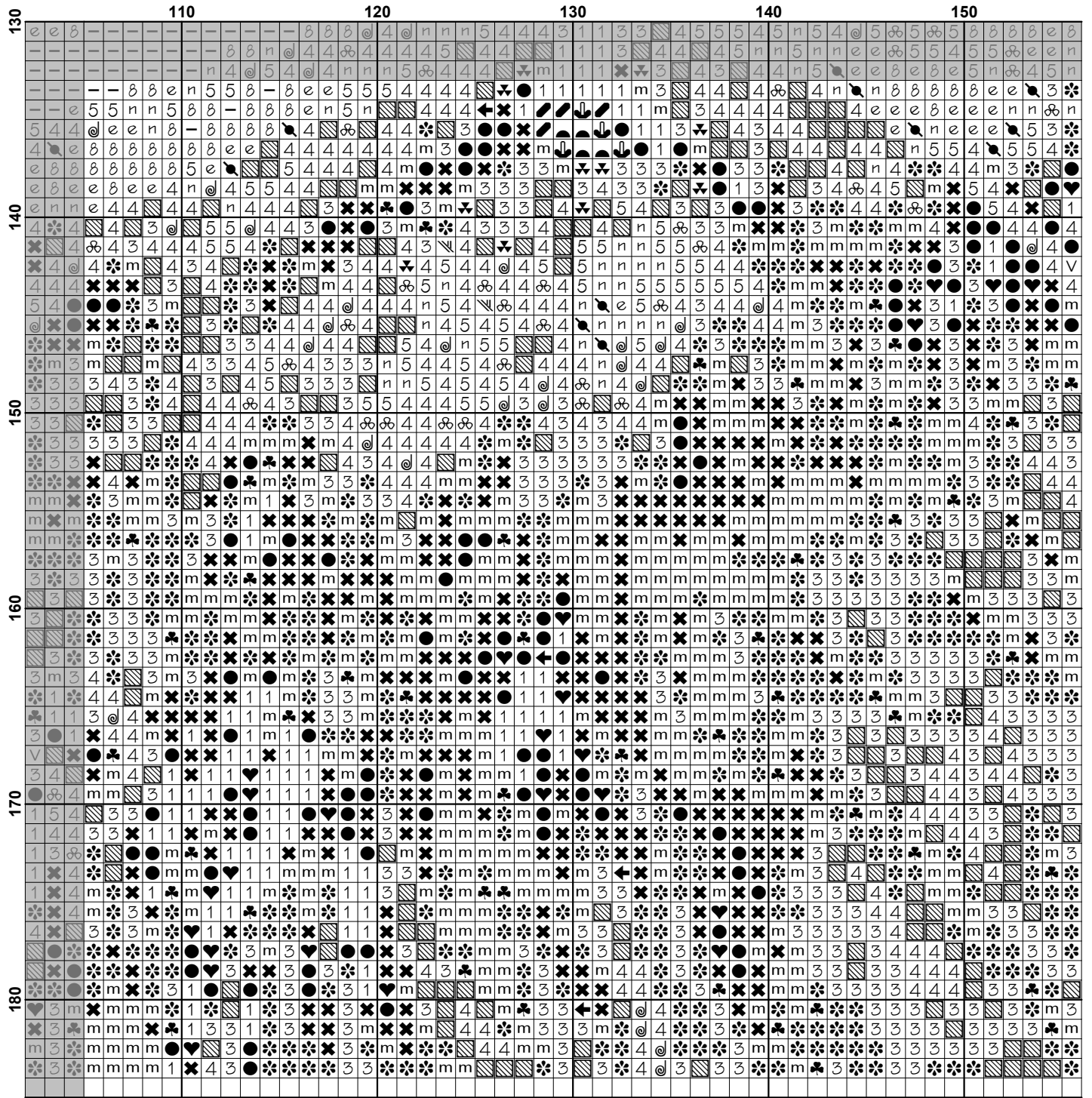


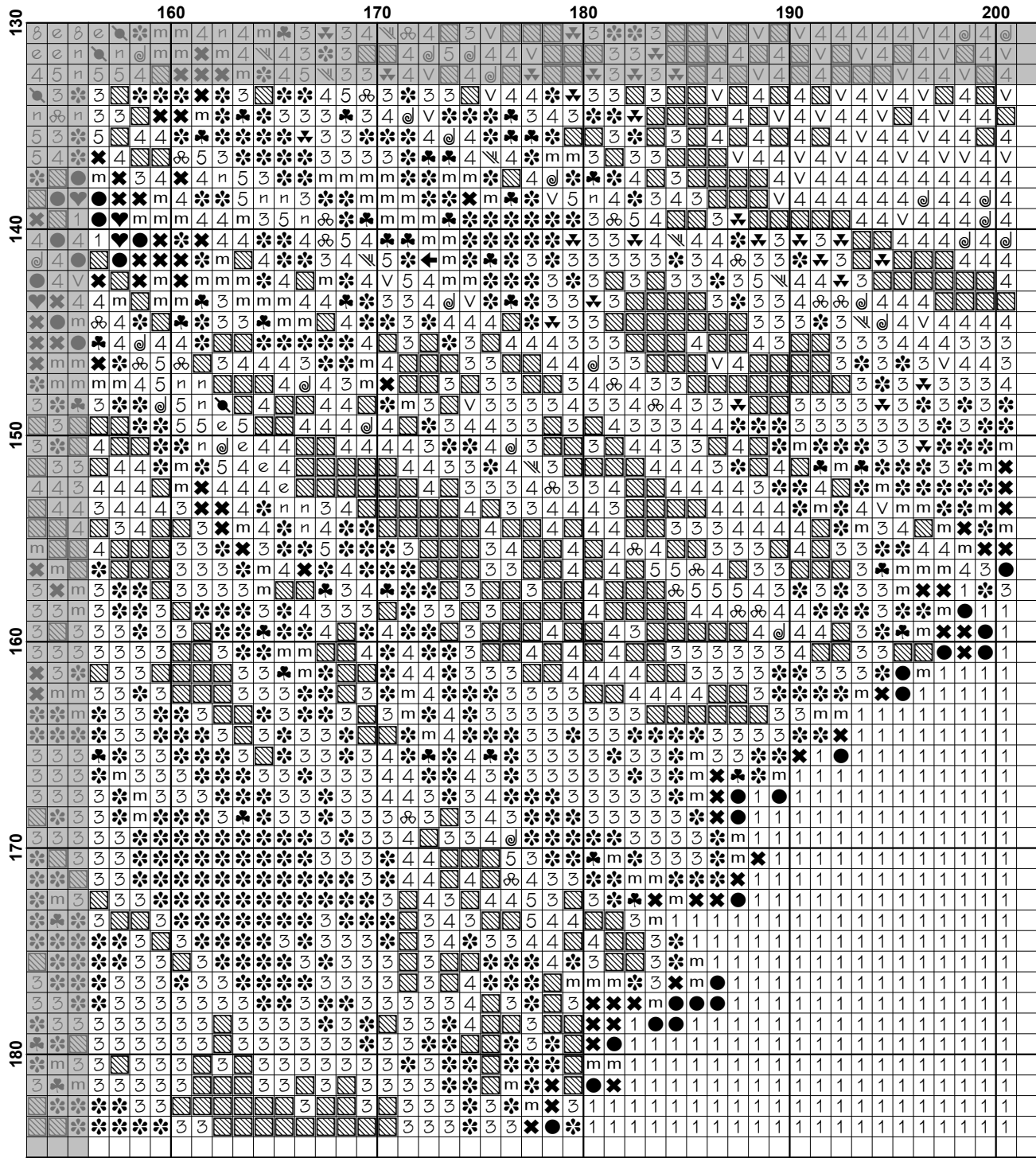




130	10										20										30										40										50																		
	1	1	1	1	1	1	1	1	1	1	1	1	1	1	1	1	1	1	1	1	1	1	1	1	1	1	1	1	1	1	1	1	1	1	1	1	1	1	1	1	1	1	1	1	1	1	1	1	1	1	1	1	1	1	1	1	1	1	1
140	1	1	1	1	1	1	1	1	1	1	1	1	1	1	1	1	1	1	1	1	1	1	1	1	1	1	1	1	1	1	1	1	1	1	1	1	1	1	1	1	1	1	1	1	1	1	1	1	1	1	1	1	1	1	1	1	1	1	1
	1	1	1	1	1	1	1	1	1	1	1	1	1	1	1	1	1	1	1	1	1	1	1	1	1	1	1	1	1	1	1	1	1	1	1	1	1	1	1	1	1	1	1	1	1	1	1	1	1										
150	1	1	1	1	1	1	1	1	1	1	1	1	1	1	1	1	1	1	1	1	1	1	1	1	1	1	1	1	1	1	1	1	1	1	1	1	1	1	1	1	1	1	1	1	1	1	1	1	1										
	1	1	1	1	1	1	1	1	1	1	1	1	1	1	1	1	1	1	1	1	1	1	1	1	1	1	1	1	1	1	1	1	1	1	1	1	1	1	1	1	1	1	1	1	1	1	1	1	1										
160	1	1	1	1	1	1	1	1	1	1	1	1	1	1	1	1	1	1	1	1	1	1	1	1	1	1	1	1	1	1	1	1	1	1	1	1	1	1	1	1	1	1	1	1	1	1	1	1	1										
	1	1	1	1	1	1	1	1	1	1	1	1	1	1	1	1	1	1	1	1	1	1	1	1	1	1	1	1	1	1	1	1	1	1	1	1	1	1	1	1	1	1	1	1	1	1	1	1	1										
170	1	1	1	1	1	1	1	1	1	1	1	1	1	1	1	1	1	1	1	1	1	1	1	1	1	1	1	1	1	1	1	1	1	1	1	1	1	1	1	1	1	1	1	1	1	1	1	1	1										
	1	1	1	1	1	1	1	1	1	1	1	1	1	1	1	1	1	1	1	1	1	1	1	1	1	1	1	1	1	1	1	1	1	1	1	1	1	1	1	1	1	1	1	1	1	1	1	1	1										
180	1	1	1	1	1	1	1	1	1	1	1	1	1	1	1	1	1	1	1	1	1	1	1	1	1	1	1	1	1	1	1	1	1	1	1	1	1	1	1	1	1	1	1	1	1	1	1	1	1										
	1	1	1	1	1	1	1	1	1	1	1	1	1	1	1	1	1	1	1	1	1	1	1	1	1	1	1	1	1	1	1	1	1	1	1	1	1	1	1	1	1	1	1	1	1	1	1	1	1										







Pattern Name: Mini Those Eyes
Designed By: Photo by Cocoparisienne - Pixabay
Company: Artecy Cross Stitch
Copyright: Copyright Artecy Cross Stitch. All rights Reserved.
Fabric: Aida 14, White
 200w X 183h Stitches
Size(s): 14 Count, 14-1/4w X 13h in
 16 Count, 12-1/2w X 11-3/8h in
 18 Count, 11w X 10-1/8h in

Floss Used for Full Stitches:

Symbol	Strands	Type	Number	Color
	⊕	2	DMC 164	Forest Green-LT
	⌘	2	DMC 168	Pewter-VY LT
	▨	2	DMC 169	Pewter-LT
	H	2	DMC 223	Shell Pink-LT
	1	2	DMC 310	Black
	✿	2	DMC 317	Pewter Gray
	4	2	DMC 318	Steel Gray-LT
	m	2	DMC 413	Pewter Gray-DK
	3	2	DMC 414	Steel Gray-DK
	5	2	DMC 415	Pearl Gray
	⊕	2	DMC 500	Blue Green-VY DK
	♣	2	DMC 535	Ash Gray-VY LT
	♠	2	DMC 562	Jade-MD
	♣	2	DMC 646	Beaver Gray-DK
	v	2	DMC 647	Beaver Gray-MD
	↘	2	DMC 648	Beaver Gray-LT
	⌘	2	DMC 680	Old Gold-DK
	❖	2	DMC 703	Chartreuse
	7	2	DMC 729	Old Gold-MD
	∩	2	DMC 760	Salmon
	e	2	DMC 762	Pearl Gray-VY LT
	∩	2	DMC 816	Garnet
	←	2	DMC 844	Beaver Brown-UL DK
	↖	2	DMC 902	Garnet-VY DK
	⊗	2	DMC 913	Nile Green-MD
	@	2	DMC 927	Gray Green-LT
	♥	2	DMC 934	Black Avocado Green
	◆	2	DMC 954	Nile Green
	L	2	DMC 959	Sea Green-MD
	g	2	DMC 964	Sea Green-LT
	⊙	2	DMC 987	Forest Green-DK
	△	2	DMC 989	Forest Green
	\$	2	DMC 3011	Khaki Green-DK
	☾	2	DMC 3012	Khaki Green-MD
	n	2	DMC 3024	Brown Gray-VY LT
	//	2	DMC 3045	Yellow Beige-DK
	↘	2	DMC 3072	Beaver Gray-VY LT
		2	DMC 3326	Rose-LT
	■	2	DMC 3345	Hunter Green-DK
	●	2	DMC 3371	Black Brown
	⊙	2	DMC 3688	Mauve-MD
	✕	2	DMC 3712	Salmon-MD
	∩	2	DMC 3721	Shell Pink-DK
	✕	2	DMC 3722	Shell Pink-MD
	✕	2	DMC 3799	Pewter Gray-VY DK

	Symbol	Strands	Type	Number	Color
<input type="checkbox"/>	-	2	DMC	3865	Winter White
<input type="checkbox"/>	ø	2	DMC	3866	Mocha Brown-UL VY LT

Notes:

The middle of this pattern can be found on page 6 and is 101 stitches across and 93 stitches down.

Pattern layout using page numbers in top left.

1 2 3 4

5 6 7 8

9 10 11 12

Usage Summary

Strands Per Skein: 6

Skein Length: 313.0 in

Type	Number	Full	Half	Quarter	Petite	Back(in)	Str(in)	Spec(in)	French	Bead	Skein Est.
DMC 164	164	35	0	0	0	0.0	0.0	0.0	0	0	1.000
DMC 168	168	659	0	0	0	0.0	0.0	0.0	0	0	1.000
DMC 169	169	2152	0	0	0	0.0	0.0	0.0	0	0	2.000
DMC 223	223	17	0	0	0	0.0	0.0	0.0	0	0	1.000
DMC 310	310	4814	0	0	0	0.0	0.0	0.0	0	0	3.000
DMC 317	317	1847	0	0	0	0.0	0.0	0.0	0	0	2.000
DMC 318	318	3543	0	0	0	0.0	0.0	0.0	0	0	2.000
DMC 413	413	1164	0	0	0	0.0	0.0	0.0	0	0	1.000
DMC 414	414	1994	0	0	0	0.0	0.0	0.0	0	0	2.000
DMC 415	415	1371	0	0	0	0.0	0.0	0.0	0	0	1.000
DMC 500	500	16	0	0	0	0.0	0.0	0.0	0	0	1.000
DMC 535	535	347	0	0	0	0.0	0.0	0.0	0	0	1.000
DMC 562	562	10	0	0	0	0.0	0.0	0.0	0	0	1.000
DMC 646	646	553	0	0	0	0.0	0.0	0.0	0	0	1.000
DMC 647	647	742	0	0	0	0.0	0.0	0.0	0	0	1.000
DMC 648	648	1614	0	0	0	0.0	0.0	0.0	0	0	1.000
DMC 680	680	7	0	0	0	0.0	0.0	0.0	0	0	1.000
DMC 703	703	13	0	0	0	0.0	0.0	0.0	0	0	1.000
DMC 729	729	8	0	0	0	0.0	0.0	0.0	0	0	1.000
DMC 760	760	9	0	0	0	0.0	0.0	0.0	0	0	1.000
DMC 762	762	735	0	0	0	0.0	0.0	0.0	0	0	1.000
DMC 816	816	19	0	0	0	0.0	0.0	0.0	0	0	1.000
DMC 844	844	148	0	0	0	0.0	0.0	0.0	0	0	1.000
DMC 902	902	11	0	0	0	0.0	0.0	0.0	0	0	1.000
DMC 913	913	32	0	0	0	0.0	0.0	0.0	0	0	1.000
DMC 927	927	617	0	0	0	0.0	0.0	0.0	0	0	1.000
DMC 934	934	133	0	0	0	0.0	0.0	0.0	0	0	1.000
DMC 954	954	33	0	0	0	0.0	0.0	0.0	0	0	1.000
DMC 959	959	36	0	0	0	0.0	0.0	0.0	0	0	1.000
DMC 964	964	20	0	0	0	0.0	0.0	0.0	0	0	1.000
DMC 987	987	27	0	0	0	0.0	0.0	0.0	0	0	1.000
DMC 989	989	24	0	0	0	0.0	0.0	0.0	0	0	1.000
DMC 3011	3011	13	0	0	0	0.0	0.0	0.0	0	0	1.000
DMC 3012	3012	13	0	0	0	0.0	0.0	0.0	0	0	1.000
DMC 3024	3024	4680	0	0	0	0.0	0.0	0.0	0	0	3.000
DMC 3045	3045	11	0	0	0	0.0	0.0	0.0	0	0	1.000
DMC 3072	3072	3385	0	0	0	0.0	0.0	0.0	0	0	2.000
DMC 3326	3326	8	0	0	0	0.0	0.0	0.0	0	0	1.000
DMC 3345	3345	15	0	0	0	0.0	0.0	0.0	0	0	1.000
DMC 3371	3371	717	0	0	0	0.0	0.0	0.0	0	0	1.000
DMC 3688	3688	17	0	0	0	0.0	0.0	0.0	0	0	1.000
DMC 3712	3712	9	0	0	0	0.0	0.0	0.0	0	0	1.000
DMC 3721	3721	10	0	0	0	0.0	0.0	0.0	0	0	1.000
DMC 3722	3722	8	0	0	0	0.0	0.0	0.0	0	0	1.000
DMC 3799	3799	1136	0	0	0	0.0	0.0	0.0	0	0	1.000
DMC 3865	3865	2112	0	0	0	0.0	0.0	0.0	0	0	2.000
DMC 3866	3866	1716	0	0	0	0.0	0.0	0.0	0	0	1.000