

Artecy

CROSS STITCH

Mini Labrador Retriever - No Background



* Original image© Chiemsee2016 - Pixabay
Cross Stitch Design by Tereena Clarke.

Completed Size = 174w x 147h Stitches

14 Count, 12.5w x 10.5h inches (32cm x 27cm)

16 Count, 11w x 9.5h inches (28cm x 24cm)

18 Count, 10w x 8.5h inches (25cm x 22cm)

Uses 60 DMC cotton colours. Only full cross stitches are used in this pattern.

Pattern Instructions

* This pattern can be worked on any fabric type, colour or count you prefer. To work out the size of the finished article, take the number of stitches wide and high and divide it by the count of your fabric (e.g. 14,16,18 count aida etc) to get the size in inches. Times it by 2.54 to get centimetres. We have the sizes in inches shown on the previous page. Also leave at least a few inches of fabric around each side of the design to assist in framing. The higher the fabric count the smaller the completed project will be.

* To put the pattern together look in the top and bottom corners. The page numbers in brackets show which page number it joins up to. Page 1 always starts at the top left hand side of the pattern. Our pages also have a shaded grey section. This indicates a 3 row overlap from adjoining pages to assist with reading the pattern. PLEASE DO NOT RESTITCH THIS AREA.

* You should begin at the centre of the pattern. To find the centre of the pattern it is just a matter of laying the pattern out and locating the arrows at the top and left hand side of the patterns, they are determined by dividing the stitch numbers wide and high in half. Where the two points meet in the middle, that is the centre.

* If you need more assistance to find the middle of your pattern or the page layout, please see the notes section on the colour symbol chart. The easiest way to stitch this pattern, as it has multiple pages, is to stitch one page at a time.

* We suggest using two strands of floss for each stitch and one strand for backstitching if the pattern calls for it.

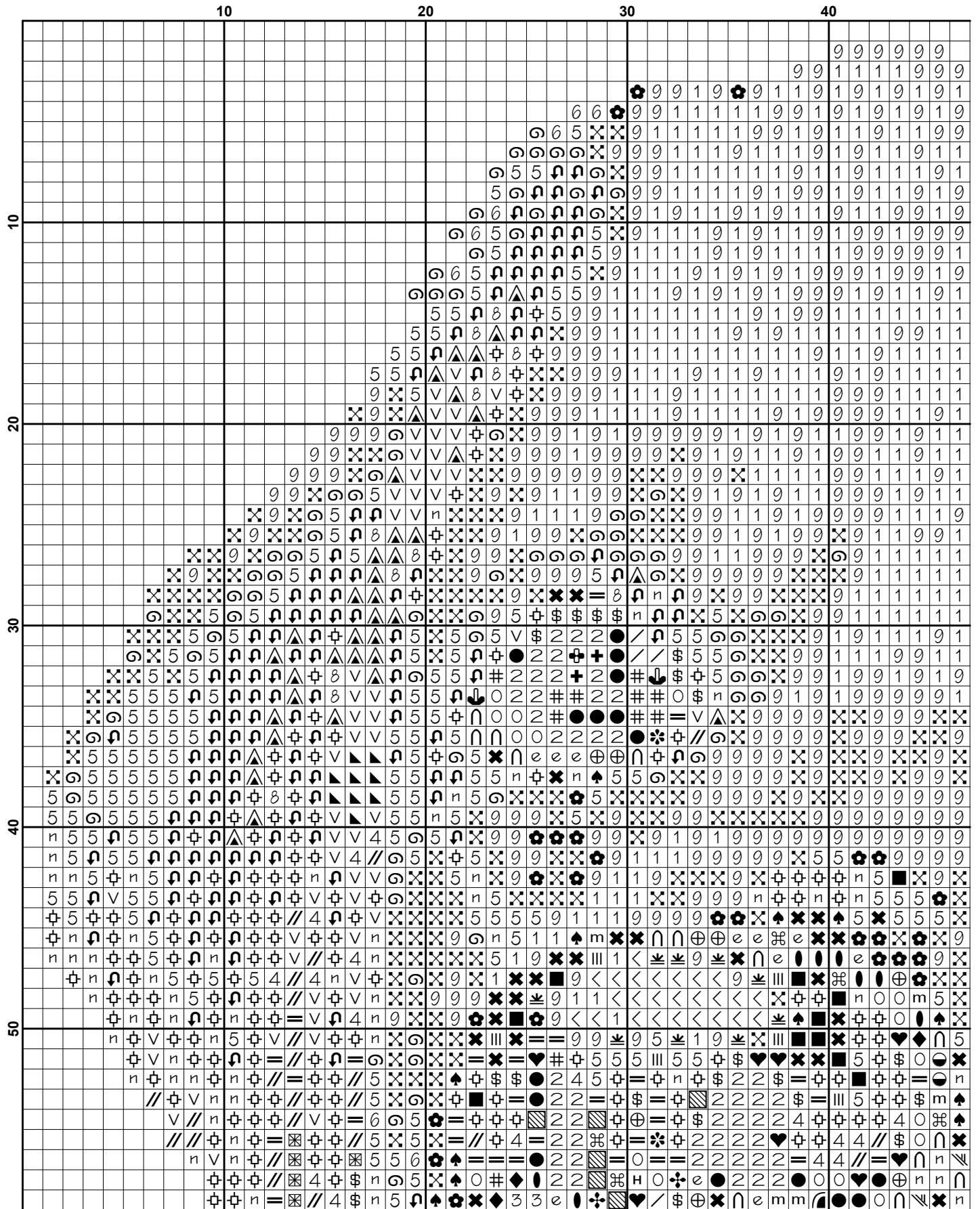
We hope you enjoy stitching our pattern.

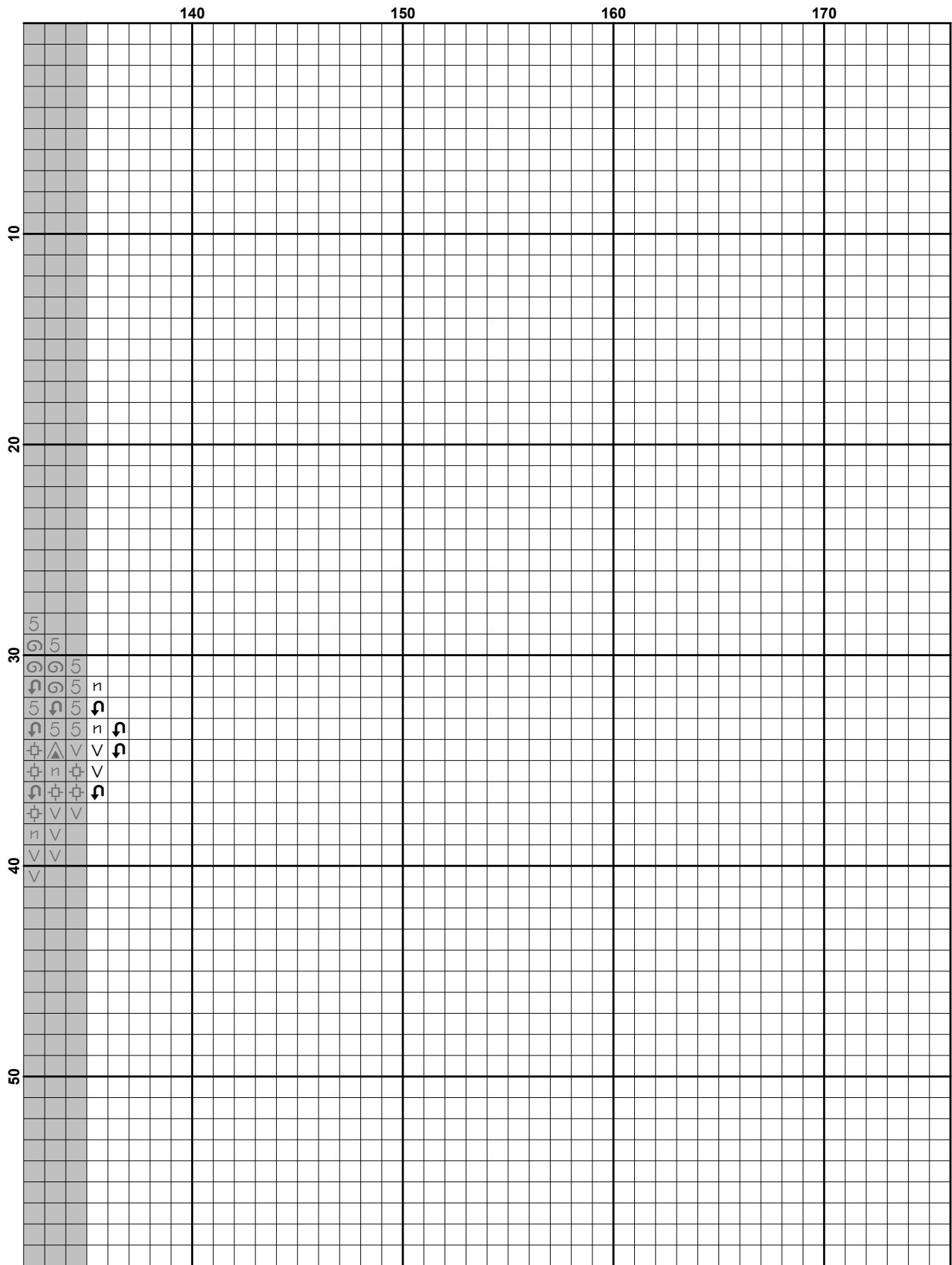
Thanks and Best Wishes
Tereena Clarke

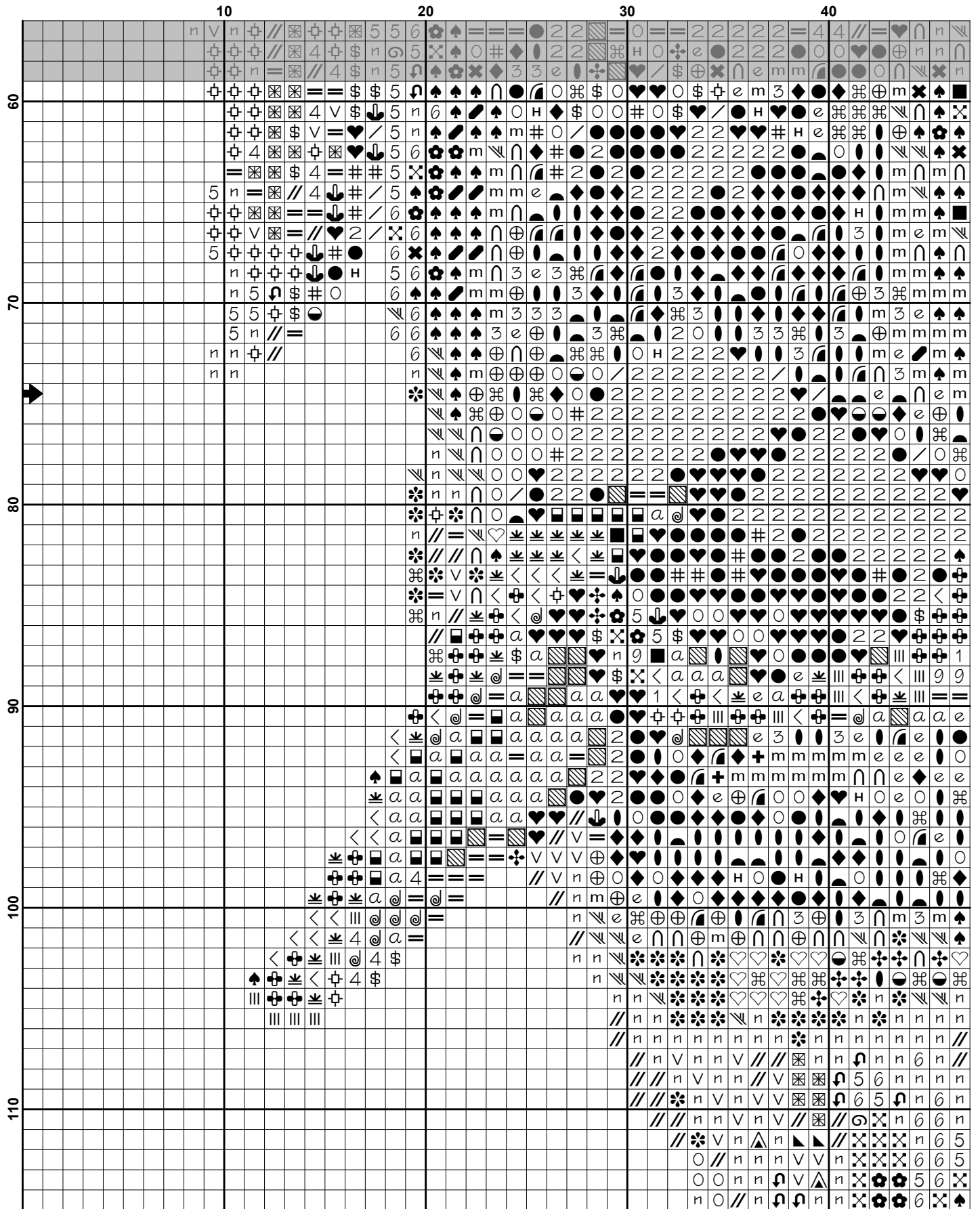
Artecy Cross Stitch
Po Box 3474
Tuggerah, NSW 2259
Australia

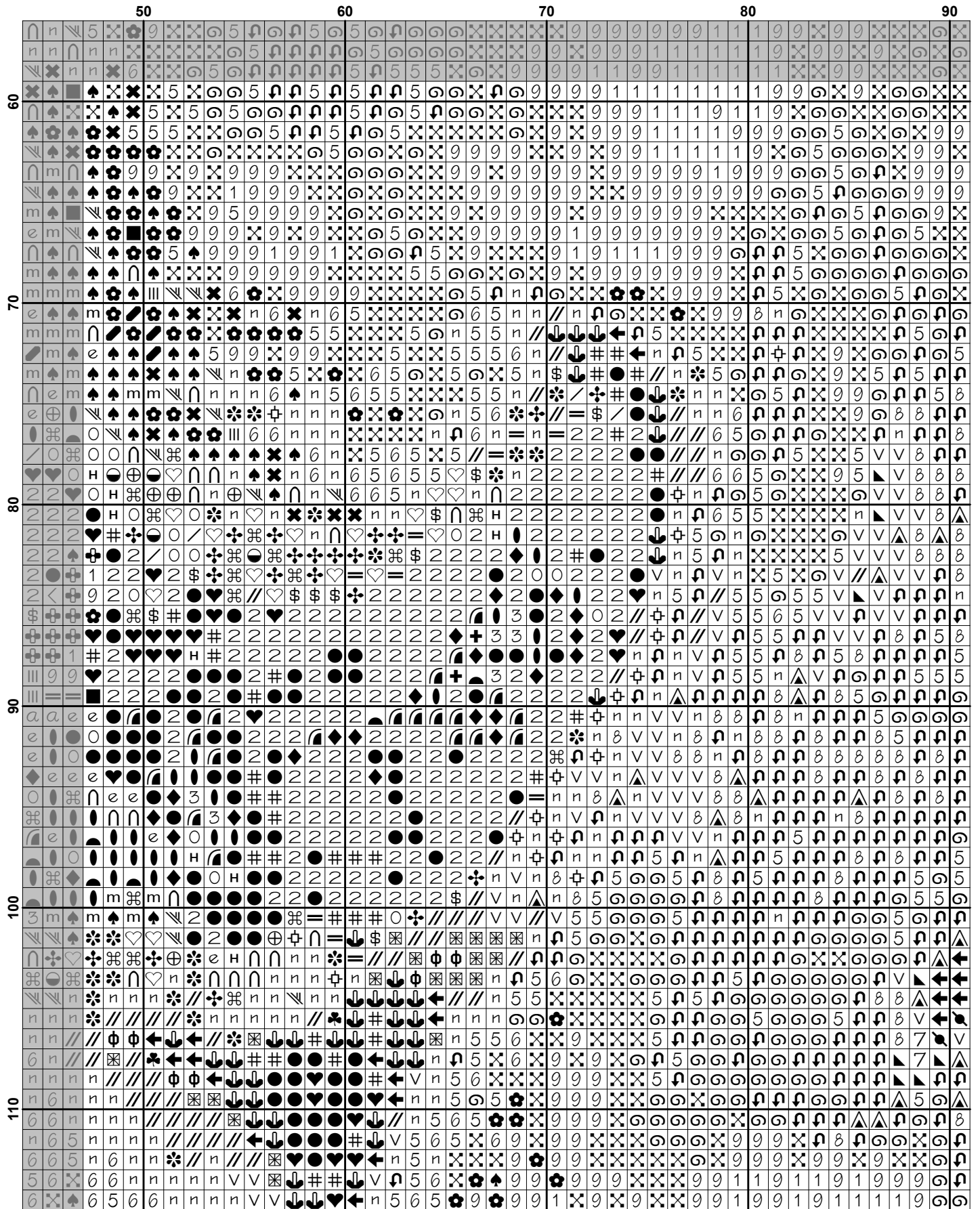
Websites: www.artecy.com and www.artecyshop.com
Email: artecy@artecy.com or stitch@artecyshop.com

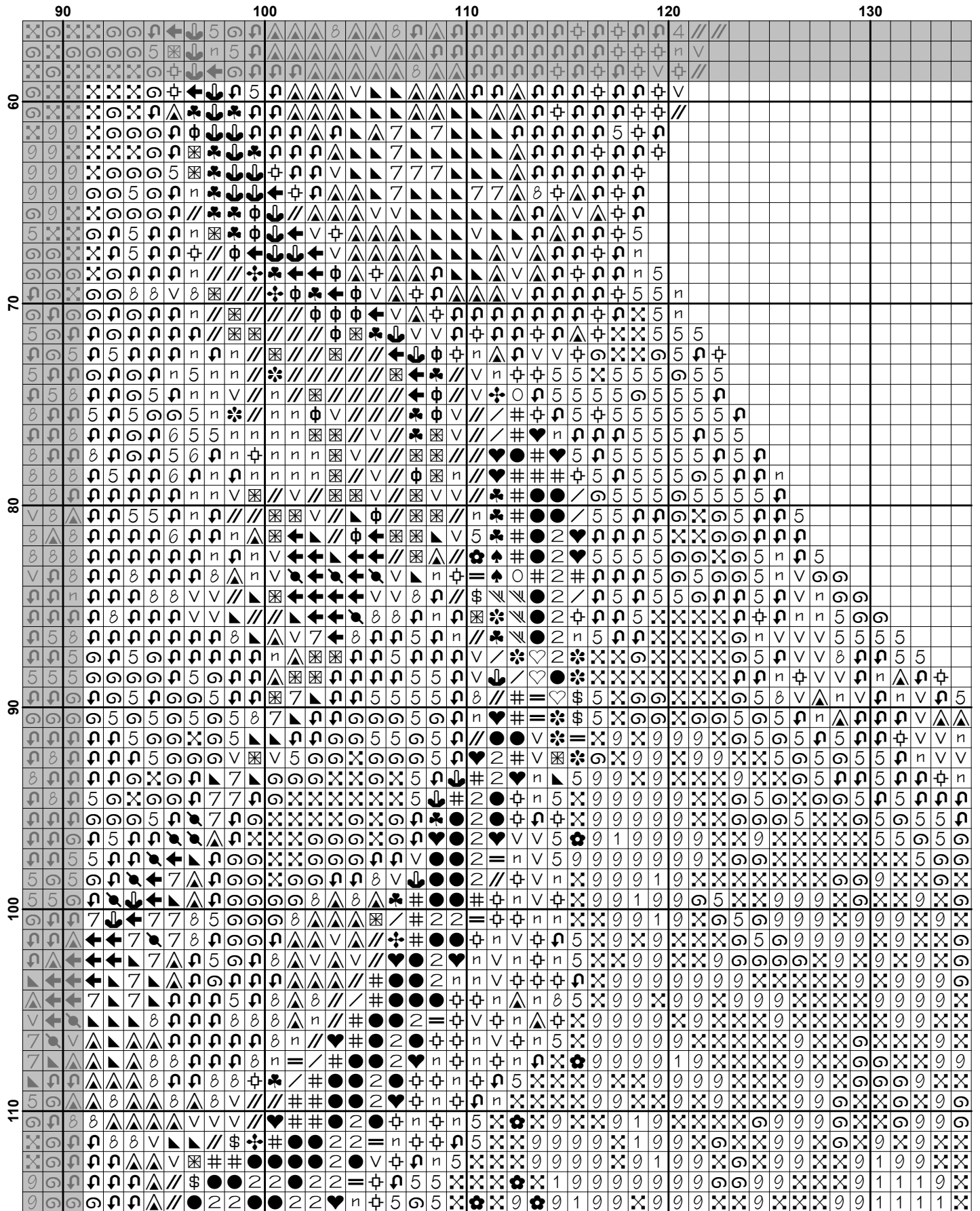
*Patterns are strictly for personal use only. It is against our copyright to make kits for sale from our designs or to sell, copy or redistribute this pattern in any form. You may not upload our patterns to any internet forums or groups or any other website. You may make 1 copy of this pattern for a working copy for your own personal use if needed.

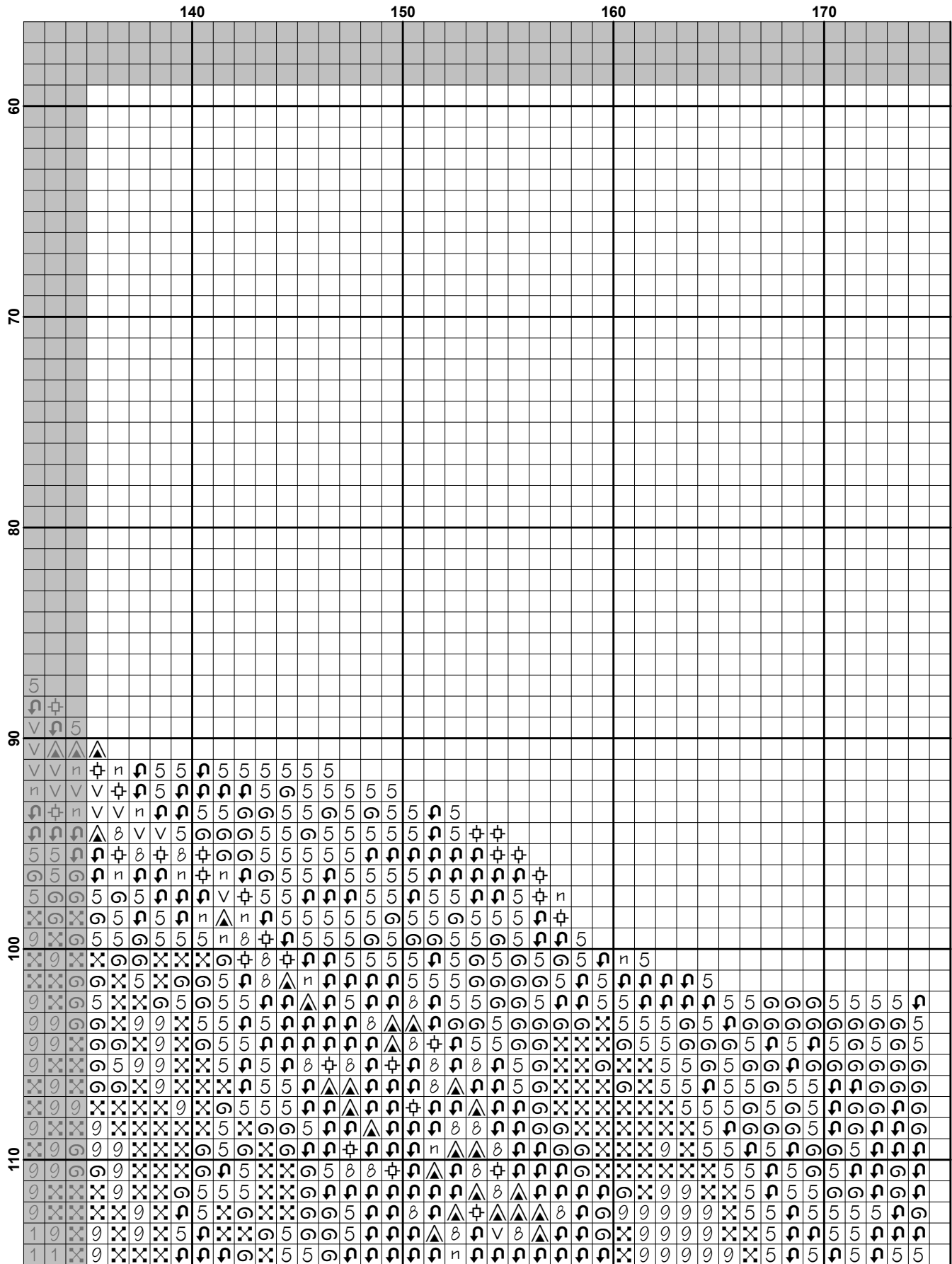


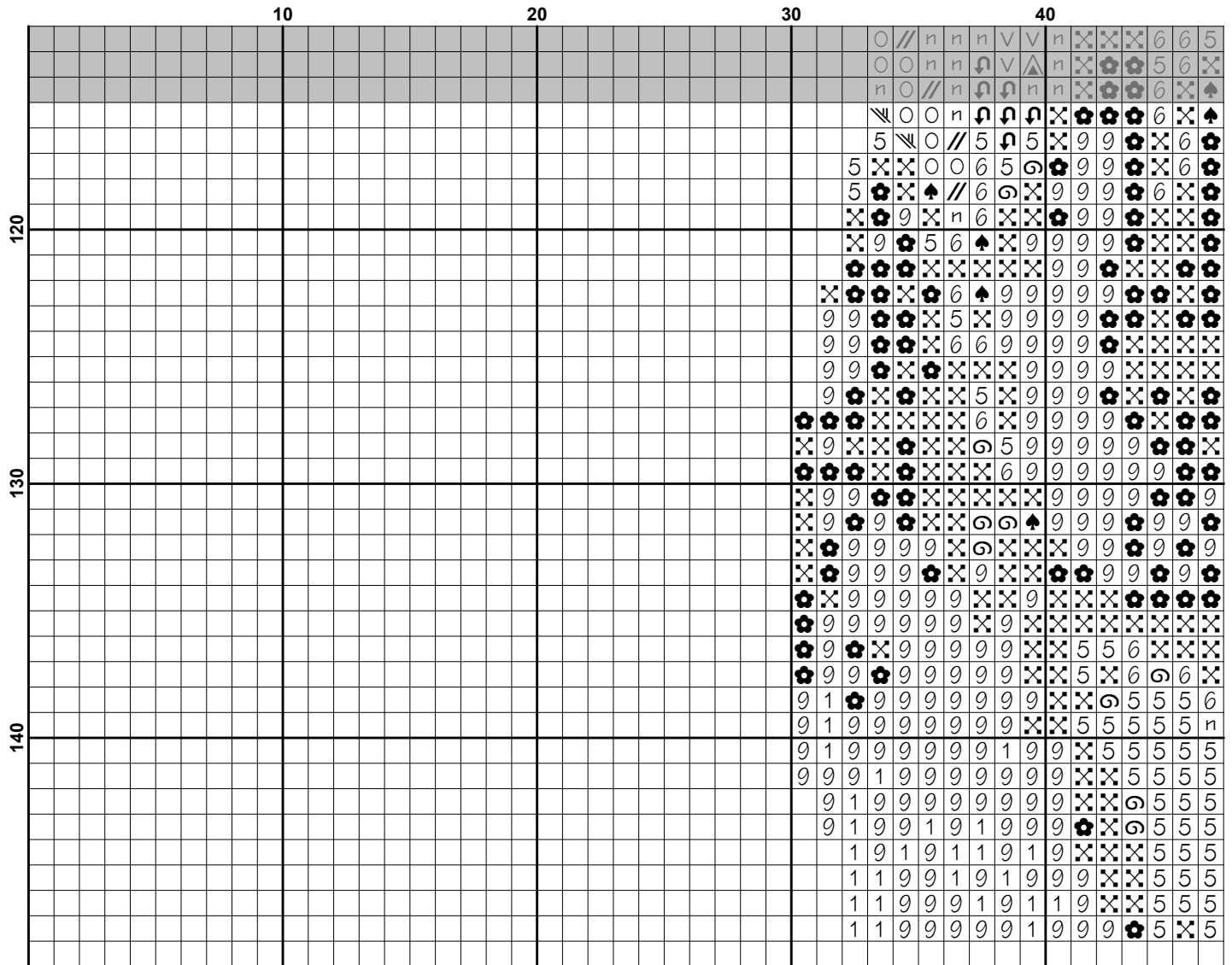











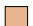


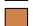

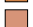

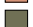

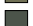

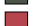




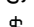

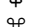
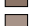

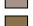




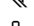


	140					150					160					170							
	9	X	X	X	9	5	X	X	9	5	9	9	9	9	9	5	5	5	5	5	5	9	9
	1	9	X	9	X	9	X	5	9	9	9	9	9	9	X	9	9	9	9	X	5	9	9
	1	1	X	9	X	X	9	5	9	9	9	9	9	9	X	9	9	9	9	X	5	9	9
	1	1	9	9	9	X	9	8	+	9	9	9	9	9	9	5	9	9	9	9	9	9	9
	1	+	9	1	9	9	△	V	V	△	9	9	9	9	9	5	9	9	9	9	9	9	9
	+	1	1	9	9	X	V	△	V	△	9	9	9	9	9	5	9	9	9	9	9	9	9
	+	1	+	9	9	X	V	△	V	△	9	9	9	9	9	5	9	9	9	9	9	9	9
120	+	+	+	1	X	△	△	△	△	△	△	△	△	△	△	△	△	△	△	△	△	△	△
	+	+	1	9	V	△	△	△	△	△	△	△	△	△	△	△	△	△	△	△	△	△	△
	+	1	1	9	△	△	△	△	△	△	△	△	△	△	△	△	△	△	△	△	△	△	△
	+	1	1	X	△	△	△	△	△	△	△	△	△	△	△	△	△	△	△	△	△	△	△
	1	1	1	△	V	△	△	△	△	△	△	△	△	△	△	△	△	△	△	△	△	△	△
	1	+	+	△	△	△	△	△	△	△	△	△	△	△	△	△	△	△	△	△	△	△	△
	1	1	V	V	△	△	△	△	△	△	△	△	△	△	△	△	△	△	△	△	△	△	△
	1	9	+	△	△	△	△	△	△	△	△	△	△	△	△	△	△	△	△	△	△	△	△
	9	+	8	△	△	△	△	△	△	△	△	△	△	△	△	△	△	△	△	△	△	△	△
130	X	V	△	△	△	△	△	△	△	△	△	△	△	△	△	△	△	△	△	△	△	△	△
	V	V	△	△	△	△	△	△	△	△	△	△	△	△	△	△	△	△	△	△	△	△	△
	V	△	△	△	△	△	△	△	△	△	△	△	△	△	△	△	△	△	△	△	△	△	△
	V	△	8	△	△	△	△	△	△	△	△	△	△	△	△	△	△	△	△	△	△	△	△
	△	△	5	△	△	△	△	△	△	△	△	△	△	△	△	△	△	△	△	△	△	△	△
	△	5	5	△	△	△	△	△	△	△	△	△	△	△	△	△	△	△	△	△	△	△	△
	△	5	5	△	△	△	△	△	△	△	△	△	△	△	△	△	△	△	△	△	△	△	△
	△	△	△	△	△	△	△	△	△	△	△	△	△	△	△	△	△	△	△	△	△	△	△
	△	△	△	△	△	△	△	△	△	△	△	△	△	△	△	△	△	△	△	△	△	△	△
	△	△	△	△	△	△	△	△	△	△	△	△	△	△	△	△	△	△	△	△	△	△	△
140	5	△	△	△	△	△	△	△	△	△	△	△	△	△	△	△	△	△	△	△	△	△	△
	△	X	△	△	△	△	△	△	△	△	△	△	△	△	△	△	△	△	△	△	△	△	△
	△	X	△	5	△	△	△	△	△	△	△	△	△	△	△	△	△	△	△	△	△	△	△
	△	5	△	△	△	△	△	△	△	△	△	△	△	△	△	△	△	△	△	△	△	△	△
	5	△	△	△	△	△	△	△	△	△	△	△	△	△	△	△	△	△	△	△	△	△	△
	5	△	5	△	△	△	△	△	△	△	△	△	△	△	△	△	△	△	△	△	△	△	△
	△	5	△	△	△	△	△	△	△	△	△	△	△	△	△	△	△	△	△	△	△	△	△
	△	5	5	△	△	△	△	△	△	△	△	△	△	△	△	△	△	△	△	△	△	△	△
	△	△	△	△	△	△	△	△	△	△	△	△	△	△	△	△	△	△	△	△	△	△	△

Pattern Name: Mini Labrador Retriever - No Background
Designed By: Photo by Chiemsee2016 - Pixabay
Company: Artecy Cross Stitch
Copyright: Copyright Artecy Cross Stitch. All rights Reserved.
Fabric: Aida 14, White
 174w X 147h Stitches
Size(s): 14 Count, 12-3/8w X 10-1/2h in
 16 Count, 10-7/8w X 9-1/8h in
 18 Count, 9-5/8w X 8-1/8h in

Floss Used for Full Stitches:

Symbol	Strands	Type	Number	Color
	2	DMC	152	Shell Pink-MD LT
	2	DMC	161	Gray Blue
	2	DMC	300	Mahogany-VY DK
	2	DMC	301	Mahogany-MD
	2	DMC	310	Black
	2	DMC	315	Antique Mauve-VY DK
	2	DMC	400	Mahogany-DK
	2	DMC	402	Mahogany-VY LT
	2	DMC	413	Pewter Gray-DK
	2	DMC	414	Steel Gray-DK
	2	DMC	435	Brown-VY LT
	2	DMC	436	Tan
	2	DMC	451	Shell Gray-DK
	2	DMC	535	Ash Gray-VY LT
	2	DMC	605	Cranberry-VY LT
	2	DMC	612	Drab Brown-LT
	2	DMC	640	Beige Gray-VY DK
	2	DMC	738	Tan-VY LT
	2	DMC	779	Cocoa-DK
	2	DMC	780	Topaz-UL VY DK
	2	DMC	801	Coffee Brown-DK
	2	DMC	819	Baby Pink-LT
	2	DMC	842	Beige Brown-VY LT
	2	DMC	902	Garnet-VY DK
	2	DMC	919	Red Copper
	2	DMC	920	Copper-MD
	2	DMC	921	Copper
	2	DMC	922	Copper-LT
	2	DMC	938	Coffee Brown-UL DK
	2	DMC	945	Tawny
	2	DMC	951	Tawny-LT
	2	DMC	975	Golden Brown-DK
	2	DMC	977	Golden Brown-LT
	2	DMC	3024	Brown Gray-VY LT
	2	DMC	3031	Mocha Brown-VY DK
	2	DMC	3041	Antique Violet-MD
	2	DMC	3042	Antique Violet-LT
	2	DMC	3326	Rose-LT
	2	DMC	3328	Salmon-DK
	2	DMC	3354	Dusty Rose-LT
	2	DMC	3371	Black Brown
	2	DMC	3687	Mauve
	2	DMC	3688	Mauve-MD
	2	DMC	3722	Shell Pink-MD
	2	DMC	3740	Antique Violet-DK

Symbol	Strands	Type	Number	Color
	1	2	DMC 3770	Tawny-VY LT
	5	2	DMC 3771	Terra Cotta-UL VY LT
		2	DMC 3774	Desert Sand-VY LT
		2	DMC 3776	Mahogany-LT
		2	DMC 3778	Terra Cotta-LT
		2	DMC 3787	Brown Gray-DK
		2	DMC 3799	Pewter Gray-VY DK
		2	DMC 3831	Raspberry-DK
		2	DMC 3856	Mahogany-UL VY LT
		2	DMC 3858	Rosewood-MD
		2	DMC 3860	Cocoa
		2	DMC 3861	Cocoa-LT
		2	DMC 3862	Mocha Beige-DK
		2	DMC 3864	Mocha Beige-LT
		2	DMC 3865	Winter White

Notes:

The middle of this pattern can be found on page 6 and is 88 stitches across and 75 stitches down.

Pattern layout using page numbers in top left.

1 2 3 4
 5 6 7 8
 9 10 11 12

Usage Summary

Strands Per Skein: 6

Skein Length: 313.0 in

Type	Number	Full	Half	Quarter	Petite	Back(in)	Str(in)	Spec(in)	French	Bead	Skein Est.
DMC 152	152	54	0	0	0	0.0	0.0	0.0	0	0	1.000
DMC 161	161	9	0	0	0	0.0	0.0	0.0	0	0	1.000
DMC 300	300	131	0	0	0	0.0	0.0	0.0	0	0	1.000
DMC 301	301	181	0	0	0	0.0	0.0	0.0	0	0	1.000
DMC 310	310	523	0	0	0	0.0	0.0	0.0	0	0	1.000
DMC 315	315	30	0	0	0	0.0	0.0	0.0	0	0	1.000
DMC 400	400	91	0	0	0	0.0	0.0	0.0	0	0	1.000
DMC 402	402	1750	0	0	0	0.0	0.0	0.0	0	0	1.000
DMC 413	413	47	0	0	0	0.0	0.0	0.0	0	0	1.000
DMC 414	414	32	0	0	0	0.0	0.0	0.0	0	0	1.000
DMC 435	435	329	0	0	0	0.0	0.0	0.0	0	0	1.000
DMC 436	436	601	0	0	0	0.0	0.0	0.0	0	0	1.000
DMC 451	451	41	0	0	0	0.0	0.0	0.0	0	0	1.000
DMC 535	535	35	0	0	0	0.0	0.0	0.0	0	0	1.000
DMC 605	605	36	0	0	0	0.0	0.0	0.0	0	0	1.000
DMC 612	612	109	0	0	0	0.0	0.0	0.0	0	0	1.000
DMC 640	640	45	0	0	0	0.0	0.0	0.0	0	0	1.000
DMC 738	738	174	0	0	0	0.0	0.0	0.0	0	0	1.000
DMC 779	779	105	0	0	0	0.0	0.0	0.0	0	0	1.000
DMC 780	780	36	0	0	0	0.0	0.0	0.0	0	0	1.000
DMC 801	801	41	0	0	0	0.0	0.0	0.0	0	0	1.000
DMC 819	819	51	0	0	0	0.0	0.0	0.0	0	0	1.000
DMC 842	842	125	0	0	0	0.0	0.0	0.0	0	0	1.000
DMC 902	902	142	0	0	0	0.0	0.0	0.0	0	0	1.000
DMC 919	919	29	0	0	0	0.0	0.0	0.0	0	0	1.000
DMC 920	920	84	0	0	0	0.0	0.0	0.0	0	0	1.000
DMC 921	921	324	0	0	0	0.0	0.0	0.0	0	0	1.000
DMC 922	922	673	0	0	0	0.0	0.0	0.0	0	0	1.000
DMC 938	938	135	0	0	0	0.0	0.0	0.0	0	0	1.000
DMC 945	945	2126	0	0	0	0.0	0.0	0.0	0	0	2.000
DMC 951	951	2609	0	0	0	0.0	0.0	0.0	0	0	2.000
DMC 975	975	39	0	0	0	0.0	0.0	0.0	0	0	1.000
DMC 977	977	249	0	0	0	0.0	0.0	0.0	0	0	1.000
DMC 3024	3024	12	0	0	0	0.0	0.0	0.0	0	0	1.000
DMC 3031	3031	24	0	0	0	0.0	0.0	0.0	0	0	1.000
DMC 3041	3041	53	0	0	0	0.0	0.0	0.0	0	0	1.000
DMC 3042	3042	63	0	0	0	0.0	0.0	0.0	0	0	1.000
DMC 3326	3326	21	0	0	0	0.0	0.0	0.0	0	0	1.000
DMC 3328	3328	40	0	0	0	0.0	0.0	0.0	0	0	1.000
DMC 3354	3354	18	0	0	0	0.0	0.0	0.0	0	0	1.000
DMC 3371	3371	364	0	0	0	0.0	0.0	0.0	0	0	1.000
DMC 3687	3687	49	0	0	0	0.0	0.0	0.0	0	0	1.000
DMC 3688	3688	28	0	0	0	0.0	0.0	0.0	0	0	1.000
DMC 3722	3722	112	0	0	0	0.0	0.0	0.0	0	0	1.000
DMC 3740	3740	121	0	0	0	0.0	0.0	0.0	0	0	1.000
DMC 3770	3770	1648	0	0	0	0.0	0.0	0.0	0	0	1.000
DMC 3771	3771	1207	0	0	0	0.0	0.0	0.0	0	0	1.000
DMC 3774	3774	265	0	0	0	0.0	0.0	0.0	0	0	1.000
DMC 3776	3776	712	0	0	0	0.0	0.0	0.0	0	0	1.000
DMC 3778	3778	490	0	0	0	0.0	0.0	0.0	0	0	1.000
DMC 3787	3787	15	0	0	0	0.0	0.0	0.0	0	0	1.000

Type	Number	Full	Half	Quarter	Petite	Back(in)	Str(in)	Spec(in)	French	Bead	Skein	Est.
■ DMC	3799	99	0	0	0	0.0	0.0	0.0	0	0	1.000	
■ DMC	3831	15	0	0	0	0.0	0.0	0.0	0	0	1.000	
■ DMC	3856	1261	0	0	0	0.0	0.0	0.0	0	0	1.000	
■ DMC	3858	77	0	0	0	0.0	0.0	0.0	0	0	1.000	
■ DMC	3860	64	0	0	0	0.0	0.0	0.0	0	0	1.000	
■ DMC	3861	81	0	0	0	0.0	0.0	0.0	0	0	1.000	
■ DMC	3862	55	0	0	0	0.0	0.0	0.0	0	0	1.000	
■ DMC	3864	63	0	0	0	0.0	0.0	0.0	0	0	1.000	
□ DMC	3865	146	0	0	0	0.0	0.0	0.0	0	0	1.000	