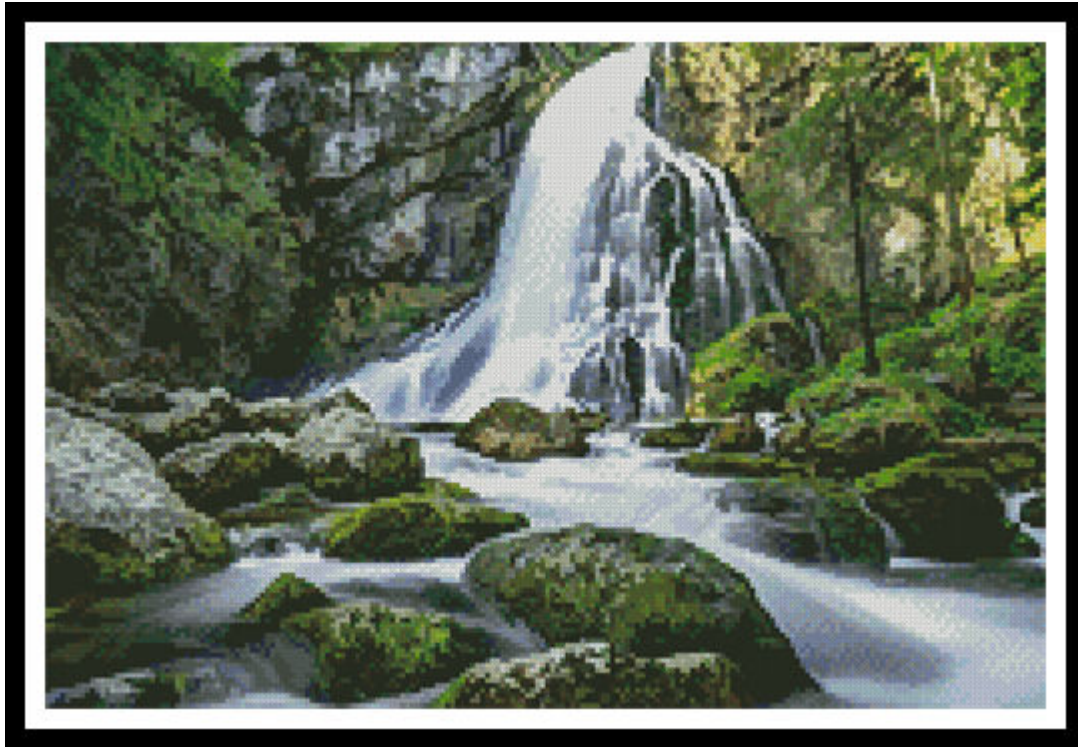


Artecy

CROSS STITCH

Mini Gollinger Waterfall



* Original image© Florian Dittmarr - Pixabay
Cross Stitch Design by Tereena Clarke.

Completed Size = 200w x 133h Stitches

14 Count, 14.5w x 9.5h inches (37cm x 24cm)

16 Count, 12.5w x 8.5h inches (32cm x 22cm)

18 Count, 11.5w x 7.5h inches (29cm x 19cm)

Uses 75 DMC cotton colours. Only full cross stitches are used in this pattern.

Pattern Instructions

* This pattern can be worked on any fabric type, colour or count you prefer. To work out the size of the finished article, take the number of stitches wide and high and divide it by the count of your fabric (e.g. 14,16,18 count aida etc) to get the size in inches. Times it by 2.54 to get centimetres. We have the sizes in inches shown on the previous page. Also leave at least a few inches of fabric around each side of the design to assist in framing. The higher the fabric count the smaller the completed project will be.

* To put the pattern together look in the top and bottom corners. The page numbers in brackets show which page number it joins up to. Page 1 always starts at the top left hand side of the pattern. Our pages also have a shaded grey section. This indicates a 3 row overlap from adjoining pages to assist with reading the pattern. PLEASE DO NOT RESTITCH THIS AREA.

* You should begin at the centre of the pattern. To find the centre of the pattern it is just a matter of laying the pattern out and locating the arrows at the top and left hand side of the patterns, they are determined by dividing the stitch numbers wide and high in half. Where the two points meet in the middle, that is the centre.

* If you need more assistance to find the middle of your pattern or the page layout, please see the notes section on the colour symbol chart. The easiest way to stitch this pattern, as it has multiple pages, is to stitch one page at a time.

* We suggest using two strands of floss for each stitch and one strand for backstitching if the pattern calls for it.

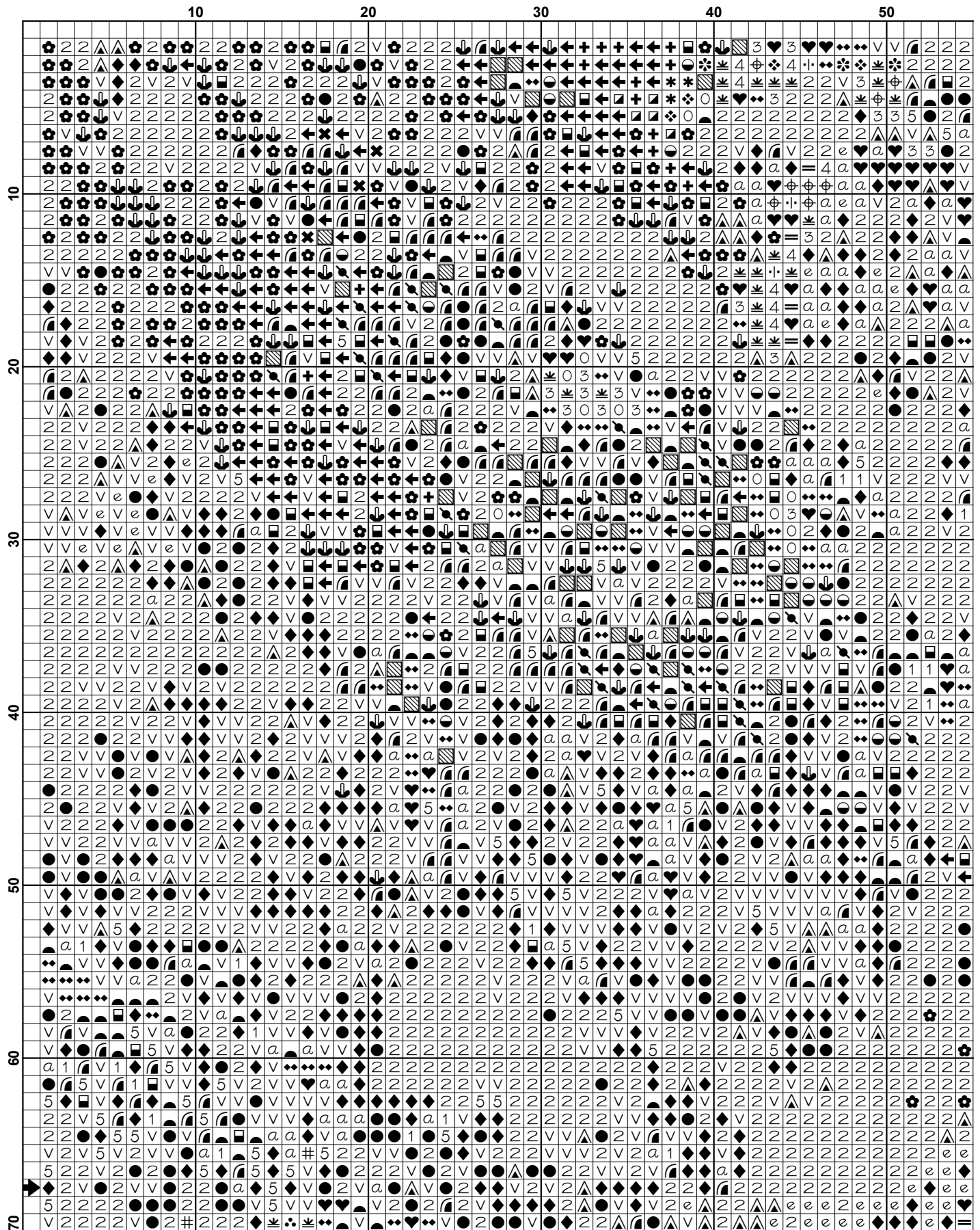
We hope you enjoy stitching our pattern.

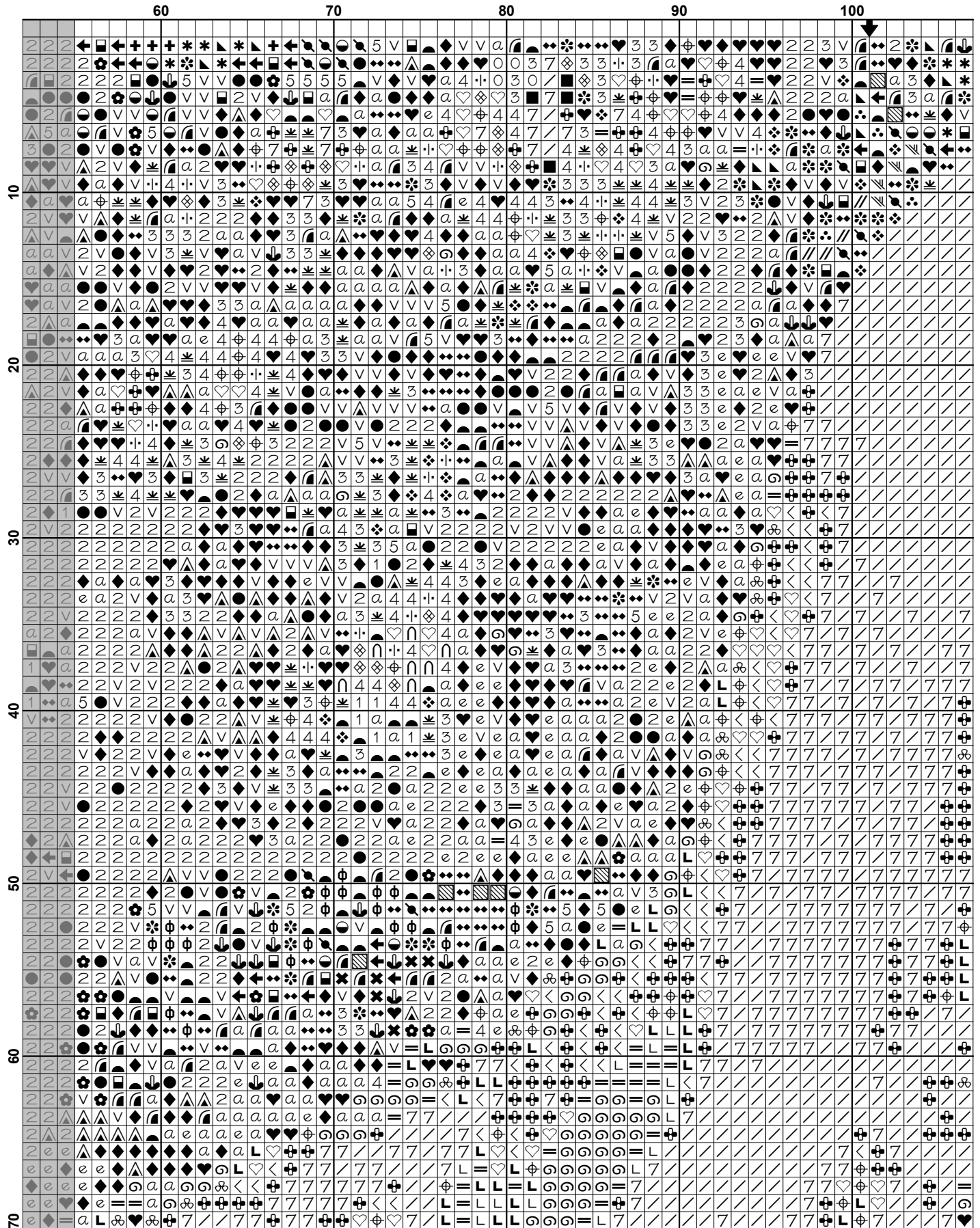
Thanks and Best Wishes
Tereena Clarke

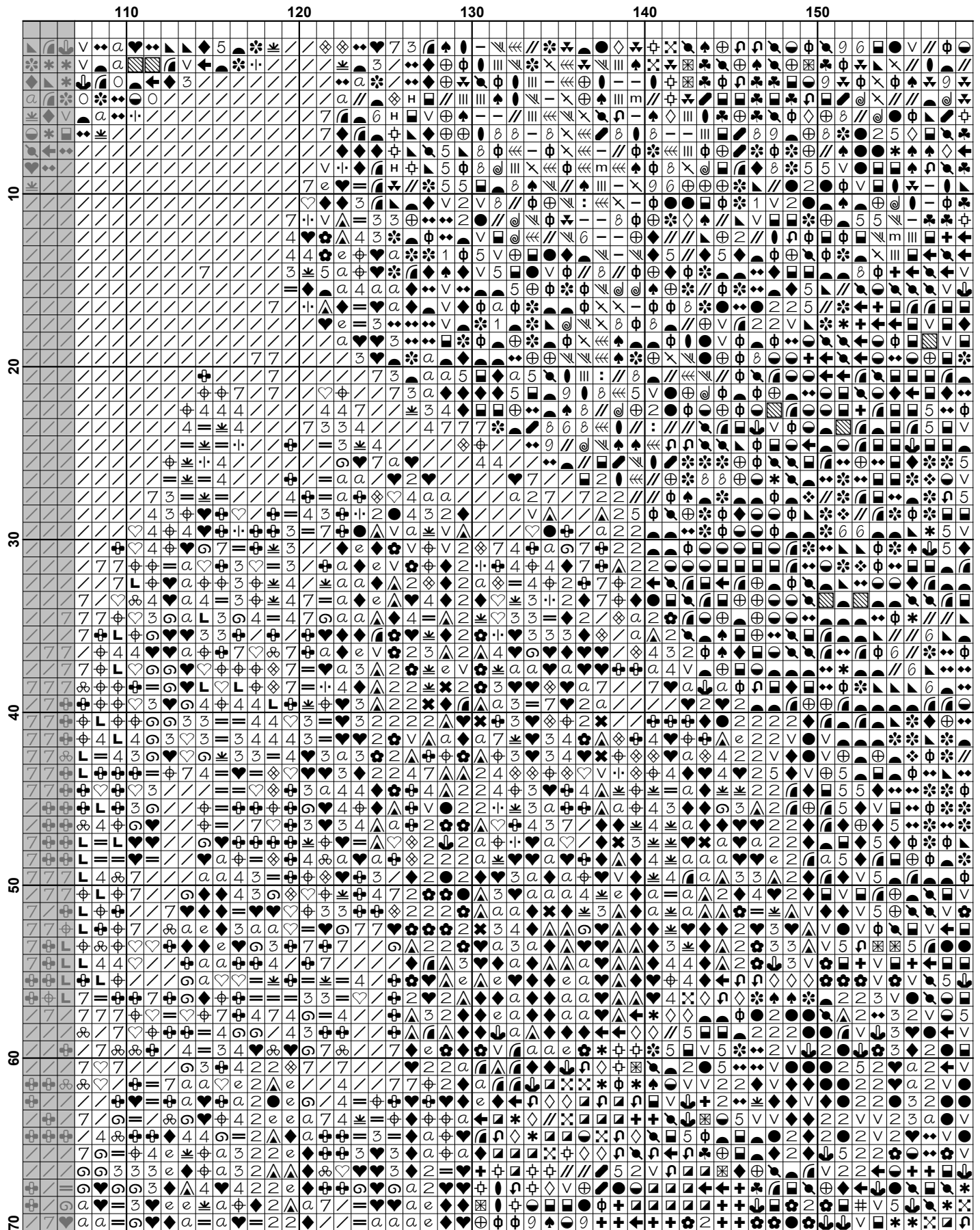
Artecy Cross Stitch
Po Box 3474
Tuggerah, NSW 2259
Australia

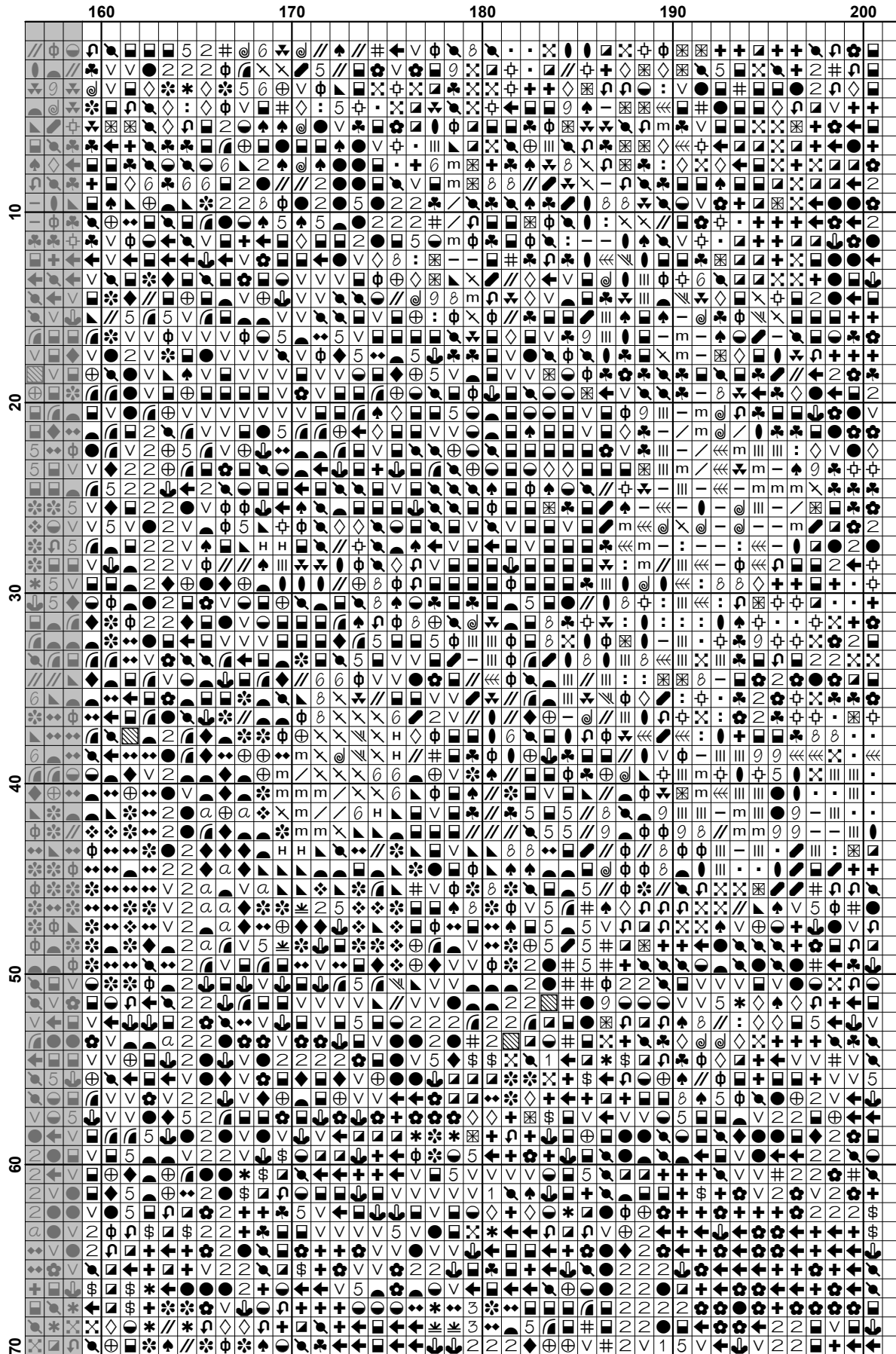
Websites: www.artecy.com and www.artecyshop.com
Email: artecy@artecy.com or stitch@artecyshop.com

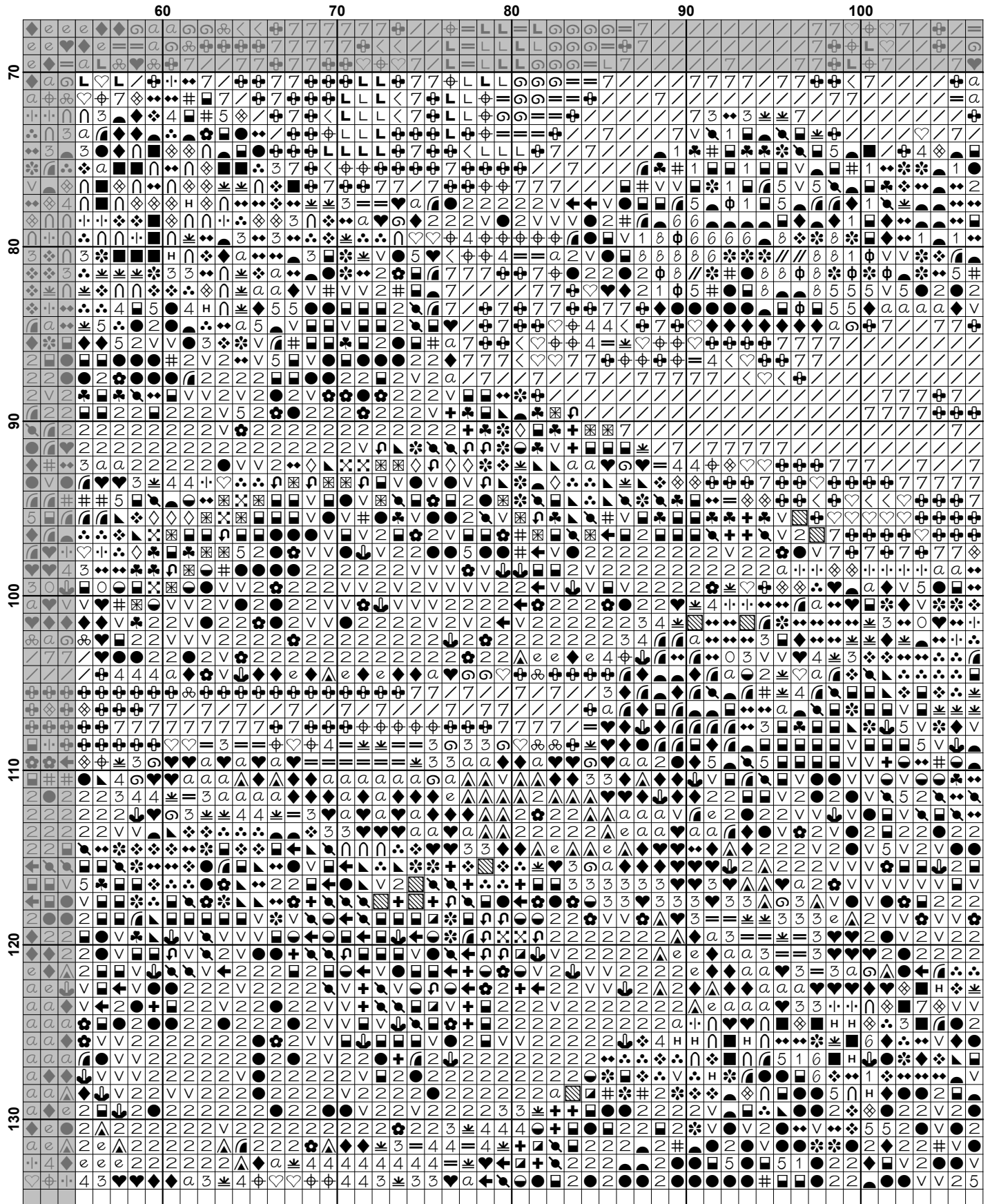
*Patterns are strictly for personal use only. It is against our copyright to make kits for sale from our designs or to sell, copy or redistribute this pattern in any form. You may not upload our patterns to any internet forums or groups or any other website. You may make 1 copy of this pattern for a working copy for your own personal use if needed.

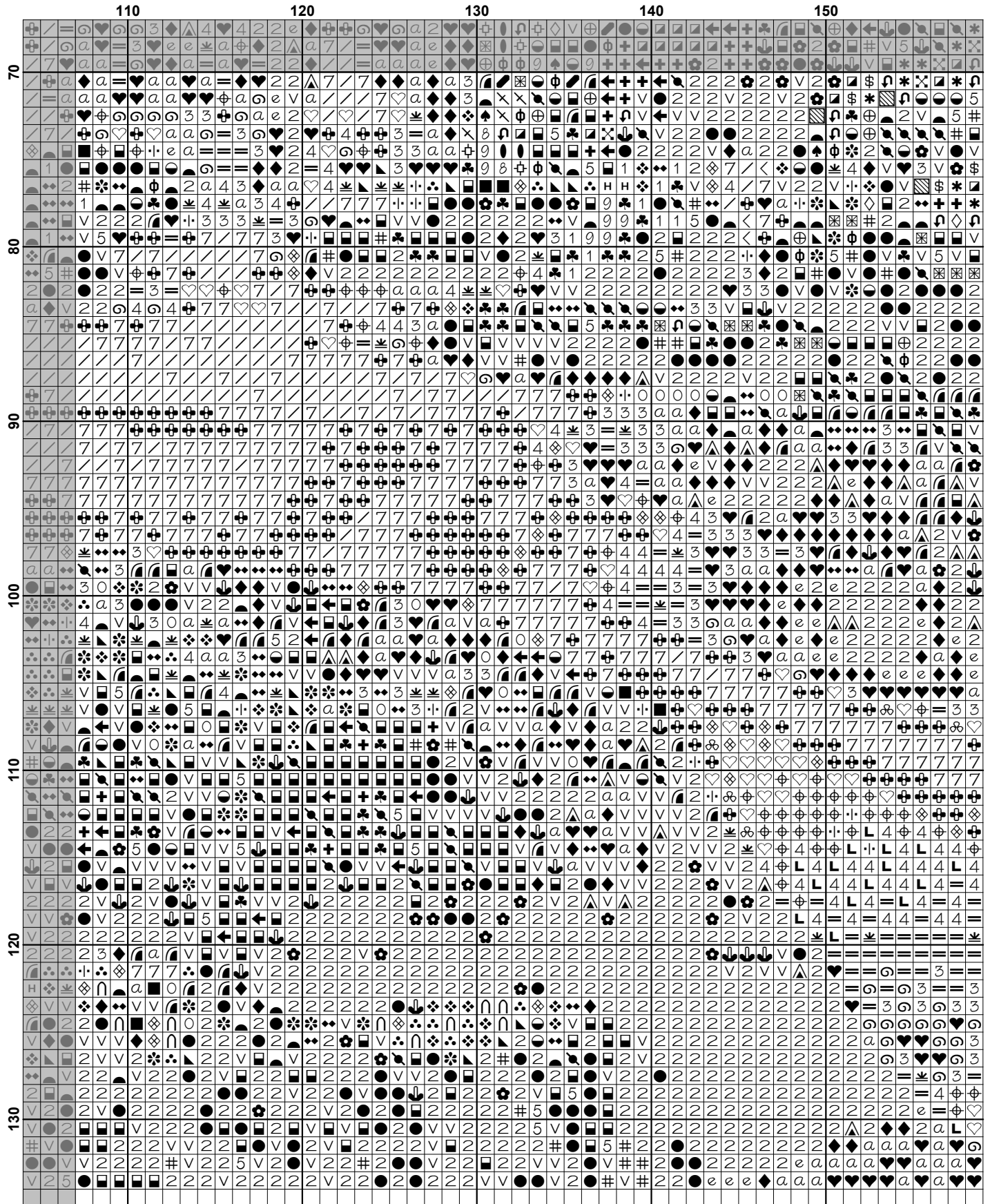


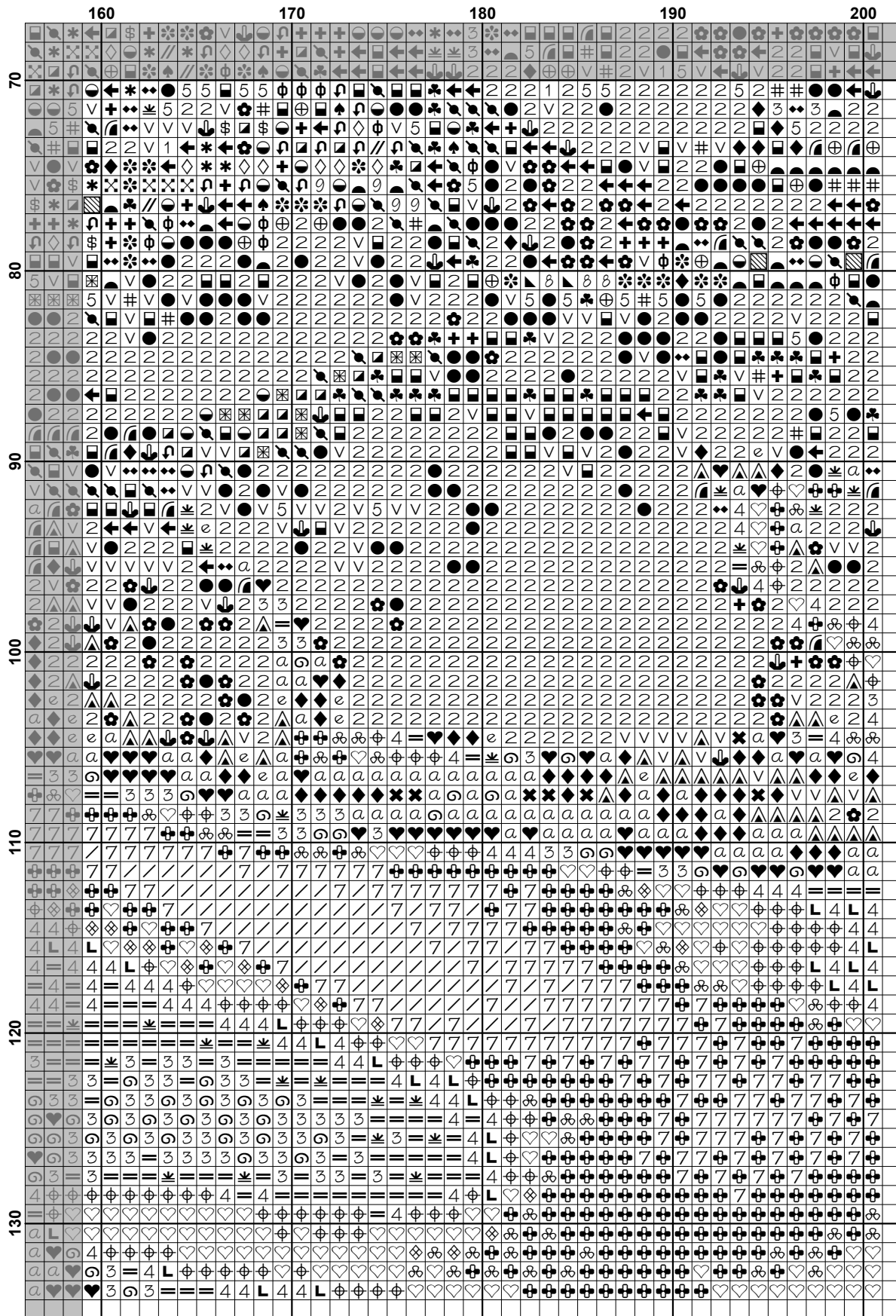












Pattern Name: Mini Gollinger Waterfall
Designed By: Photo by Florian Dittmarr - Pixabay
Company: Artecy Cross Stitch
Copyright: Copyright Artecy Cross Stitch. All rights Reserved.
Fabric: Aida 14, White
 200w X 133h Stitches
Size(s): 14 Count, 14-1/4w X 9-1/2h in
 16 Count, 12-1/2w X 8-1/4h in
 18 Count, 11w X 7-3/8h in

Floss Used for Full Stitches:

Symbol	Strands	Type	Number	Color
	L	2	DMC 156	Blue Violet-MD LT
	⊕	2	DMC 159	Gray Blue-LT
		2	DMC 160	Gray Blue-MD
	⊙	2	DMC 161	Gray Blue
	●	2	DMC 165	Moss Green-VY LT
	⊗	2	DMC 169	Pewter-LT
	⊗	2	DMC 310	Black
	♥	2	DMC 317	Pewter Gray
	⊕	2	DMC 318	Steel Gray-LT
	⊗	2	DMC 319	Pistachio Green-VY DK
	⊕	2	DMC 320	Pistachio Green-MD
	⊕	2	DMC 371	Mustard
	//	2	DMC 372	Mustard-LT
	⊗	2	DMC 413	Pewter Gray-DK
	⊕	2	DMC 414	Steel Gray-DK
	⊕	2	DMC 422	Hazelnut Brown-LT
	⊕	2	DMC 445	Lemon-LT
	⊗	2	DMC 469	Avocado Green
	⊕	2	DMC 470	Avocado Green-LT
	⊕	2	DMC 471	Avocado Green-VY LT
	⊕	2	DMC 472	Avocado Green-UL LT
	▲	2	DMC 500	Blue Green-VY DK
	⊗	2	DMC 520	Fern Green-DK
	⊕	2	DMC 524	Fern Green-VY LT
	⊗	2	DMC 580	Moss Green-DK
	⊗	2	DMC 581	Moss Green
	⊕	2	DMC 611	Drab Brown
	⊕	2	DMC 644	Beige Gray-MD
	⊗	2	DMC 645	Beaver Gray-VY DK
	⊕	2	DMC 647	Beaver Gray-MD
	⊕	2	DMC 648	Beaver Gray-LT
	⊕	2	DMC 677	Old Gold-VY LT
	⊕	2	DMC 702	Kelly Green
	⊕	2	DMC 726	Topaz-LT
	⊗	2	DMC 730	Olive Green-VY DK
	⊕	2	DMC 738	Tan-VY LT
	⊕	2	DMC 779	Cocoa-DK
	⊕	2	DMC 794	Cornflower Blue-LT
	⊕	2	DMC 800	Delft Blue-Pale
	⊕	2	DMC 823	Navy Blue-DK
	⊕	2	DMC 831	Golden Olive-MD
	⊕	2	DMC 833	Golden Olive-LT
	⊗	2	DMC 890	Pistachio Green-UL DK
	⊕	2	DMC 895	Hunter Green-VY DK
	⊕	2	DMC 904	Parrot Green-VY DK

Symbol	Strands	Type	Number	Color
	2	DMC	905	Parrot Green-DK
	2	DMC	906	Parrot Green-MD
	2	DMC	907	Parrot Green-LT
	2	DMC	927	Gray Green-LT
	2	DMC	928	Gray Green-VY LT
	2	DMC	934	Black Avocado Green
	2	DMC	936	Avocado Green-VY DK
	2	DMC	938	Coffee Brown-UL DK
	2	DMC	987	Forest Green-DK
	2	DMC	988	Forest Green-MD
	2	DMC	3012	Khaki Green-MD
	2	DMC	3031	Mocha Brown-VY DK
	2	DMC	3052	Green Gray-MD
	2	DMC	3072	Beaver Gray-VY LT
	2	DMC	3078	Golden Yellow-VY LT
	2	DMC	3346	Hunter Green
	2	DMC	3364	Pine Green
	2	DMC	3371	Black Brown
	2	DMC	3747	Blue Violet-VY LT
	2	DMC	3752	Antique Blue-VY LT
	2	DMC	3756	Baby Blue-UL VY LT
	2	DMC	3781	Mocha Brown-DK
	2	DMC	3782	Mocha Brown-LT
	2	DMC	3787	Brown Gray-DK
	2	DMC	3799	Pewter Gray-VY DK
	2	DMC	3819	Moss Green-LT
	2	DMC	3823	Yellow-UL Pale
	2	DMC	3841	Baby Blue-Pale
	2	DMC	3855	Autumn Gold-LT
	2	DMC	3865	Winter White

Notes:

The middle of this pattern can be found on page 2 and is 101 stitches across and 68 stitches down.

Pattern layout using page numbers in top left.

1 2 3 4
5 6 7 8

Usage Summary

Strands Per Skein: 6

Skein Length: 313.0 in

Type	Number	Full	Half	Quarter	Petite	Back(in)	Str(in)	Spec(in)	French	Bead	Skein Est.
DMC 156	156	26	0	0	0	0.0	0.0	0.0	0	0	1.000
DMC 159	159	396	0	0	0	0.0	0.0	0.0	0	0	1.000
DMC 160	160	362	0	0	0	0.0	0.0	0.0	0	0	1.000
DMC 161	161	248	0	0	0	0.0	0.0	0.0	0	0	1.000
DMC 165	165	65	0	0	0	0.0	0.0	0.0	0	0	1.000
DMC 169	169	429	0	0	0	0.0	0.0	0.0	0	0	1.000
DMC 310	310	4315	0	0	0	0.0	0.0	0.0	0	0	3.000
DMC 317	317	720	0	0	0	0.0	0.0	0.0	0	0	1.000
DMC 318	318	481	0	0	0	0.0	0.0	0.0	0	0	1.000
DMC 319	319	26	0	0	0	0.0	0.0	0.0	0	0	1.000
DMC 320	320	46	0	0	0	0.0	0.0	0.0	0	0	1.000
DMC 371	371	83	0	0	0	0.0	0.0	0.0	0	0	1.000
DMC 372	372	117	0	0	0	0.0	0.0	0.0	0	0	1.000
DMC 413	413	1055	0	0	0	0.0	0.0	0.0	0	0	1.000
DMC 414	414	662	0	0	0	0.0	0.0	0.0	0	0	1.000
DMC 422	422	36	0	0	0	0.0	0.0	0.0	0	0	1.000
DMC 445	445	60	0	0	0	0.0	0.0	0.0	0	0	1.000
DMC 469	469	405	0	0	0	0.0	0.0	0.0	0	0	1.000
DMC 470	470	126	0	0	0	0.0	0.0	0.0	0	0	1.000
DMC 471	471	96	0	0	0	0.0	0.0	0.0	0	0	1.000
DMC 472	472	40	0	0	0	0.0	0.0	0.0	0	0	1.000
DMC 500	500	470	0	0	0	0.0	0.0	0.0	0	0	1.000
DMC 520	520	570	0	0	0	0.0	0.0	0.0	0	0	1.000
DMC 524	524	104	0	0	0	0.0	0.0	0.0	0	0	1.000
DMC 580	580	204	0	0	0	0.0	0.0	0.0	0	0	1.000
DMC 581	581	99	0	0	0	0.0	0.0	0.0	0	0	1.000
DMC 611	611	220	0	0	0	0.0	0.0	0.0	0	0	1.000
DMC 644	644	24	0	0	0	0.0	0.0	0.0	0	0	1.000
DMC 645	645	561	0	0	0	0.0	0.0	0.0	0	0	1.000
DMC 647	647	196	0	0	0	0.0	0.0	0.0	0	0	1.000
DMC 648	648	101	0	0	0	0.0	0.0	0.0	0	0	1.000
DMC 677	677	51	0	0	0	0.0	0.0	0.0	0	0	1.000
DMC 702	702	24	0	0	0	0.0	0.0	0.0	0	0	1.000
DMC 726	726	28	0	0	0	0.0	0.0	0.0	0	0	1.000
DMC 730	730	36	0	0	0	0.0	0.0	0.0	0	0	1.000
DMC 738	738	32	0	0	0	0.0	0.0	0.0	0	0	1.000
DMC 779	779	65	0	0	0	0.0	0.0	0.0	0	0	1.000
DMC 794	794	112	0	0	0	0.0	0.0	0.0	0	0	1.000
DMC 800	800	96	0	0	0	0.0	0.0	0.0	0	0	1.000
DMC 823	823	273	0	0	0	0.0	0.0	0.0	0	0	1.000
DMC 831	831	36	0	0	0	0.0	0.0	0.0	0	0	1.000
DMC 833	833	29	0	0	0	0.0	0.0	0.0	0	0	1.000
DMC 890	890	522	0	0	0	0.0	0.0	0.0	0	0	1.000
DMC 895	895	341	0	0	0	0.0	0.0	0.0	0	0	1.000
DMC 904	904	401	0	0	0	0.0	0.0	0.0	0	0	1.000
DMC 905	905	217	0	0	0	0.0	0.0	0.0	0	0	1.000
DMC 906	906	123	0	0	0	0.0	0.0	0.0	0	0	1.000
DMC 907	907	69	0	0	0	0.0	0.0	0.0	0	0	1.000
DMC 927	927	157	0	0	0	0.0	0.0	0.0	0	0	1.000
DMC 928	928	236	0	0	0	0.0	0.0	0.0	0	0	1.000
DMC 934	934	1731	0	0	0	0.0	0.0	0.0	0	0	1.000

Type	Number	Full	Half	Quarter	Petite	Back(in)	Str(in)	Spec(in)	French	Bead	Skein Est.
DMC	936	1213	0	0	0	0.0	0.0	0.0	0	0	1.000
DMC	938	126	0	0	0	0.0	0.0	0.0	0	0	1.000
DMC	987	87	0	0	0	0.0	0.0	0.0	0	0	1.000
DMC	988	50	0	0	0	0.0	0.0	0.0	0	0	1.000
DMC	3012	85	0	0	0	0.0	0.0	0.0	0	0	1.000
DMC	3031	336	0	0	0	0.0	0.0	0.0	0	0	1.000
DMC	3052	319	0	0	0	0.0	0.0	0.0	0	0	1.000
DMC	3072	59	0	0	0	0.0	0.0	0.0	0	0	1.000
DMC	3078	65	0	0	0	0.0	0.0	0.0	0	0	1.000
DMC	3346	253	0	0	0	0.0	0.0	0.0	0	0	1.000
DMC	3364	133	0	0	0	0.0	0.0	0.0	0	0	1.000
DMC	3371	1081	0	0	0	0.0	0.0	0.0	0	0	1.000
DMC	3747	929	0	0	0	0.0	0.0	0.0	0	0	1.000
DMC	3752	338	0	0	0	0.0	0.0	0.0	0	0	1.000
DMC	3756	986	0	0	0	0.0	0.0	0.0	0	0	1.000
DMC	3781	145	0	0	0	0.0	0.0	0.0	0	0	1.000
DMC	3782	37	0	0	0	0.0	0.0	0.0	0	0	1.000
DMC	3787	567	0	0	0	0.0	0.0	0.0	0	0	1.000
DMC	3799	1390	0	0	0	0.0	0.0	0.0	0	0	1.000
DMC	3819	58	0	0	0	0.0	0.0	0.0	0	0	1.000
DMC	3823	35	0	0	0	0.0	0.0	0.0	0	0	1.000
DMC	3841	81	0	0	0	0.0	0.0	0.0	0	0	1.000
DMC	3855	42	0	0	0	0.0	0.0	0.0	0	0	1.000
DMC	3865	1263	0	0	0	0.0	0.0	0.0	0	0	1.000