

Artecy

CROSS STITCH

Mini Carnations Heart



* Original image© T Clarke using Midjourney AI
Cross Stitch Design by Tereena Clarke.

Completed Size = 195w x 196h Stitches

14 Count, 14w x 14h inches (36cm x 36cm)

16 Count, 12.5w x 12.5h inches (32cm x 32cm)

18 Count, 11w x 11h inches (28cm x 28cm)

Uses 66 DMC cotton colours. Only full cross stitches are used in this pattern.

Pattern Instructions

* This pattern can be worked on any fabric type, colour or count you prefer. To work out the size of the finished article, take the number of stitches wide and high and divide it by the count of your fabric (e.g. 14,16,18 count aida etc) to get the size in inches. Times it by 2.54 to get centimetres. We have the sizes in inches shown on the previous page. Also leave at least a few inches of fabric around each side of the design to assist in framing. The higher the fabric count the smaller the completed project will be.

* To put the pattern together look in the top and bottom corners. The page numbers in brackets show which page number it joins up to. Page 1 always starts at the top left hand side of the pattern. Our pages also have a shaded grey section. This indicates a 3 row overlap from adjoining pages to assist with reading the pattern. PLEASE DO NOT RESTITCH THIS AREA.

* You should begin at the centre of the pattern. To find the centre of the pattern it is just a matter of laying the pattern out and locating the arrows at the top and left hand side of the patterns, they are determined by dividing the stitch numbers wide and high in half. Where the two points meet in the middle, that is the centre.

* If you need more assistance to find the middle of your pattern or the page layout, please see the notes section on the colour symbol chart. The easiest way to stitch this pattern, as it has multiple pages, is to stitch one page at a time.

* We suggest using two strands of floss for each stitch and one strand for backstitching if the pattern calls for it.

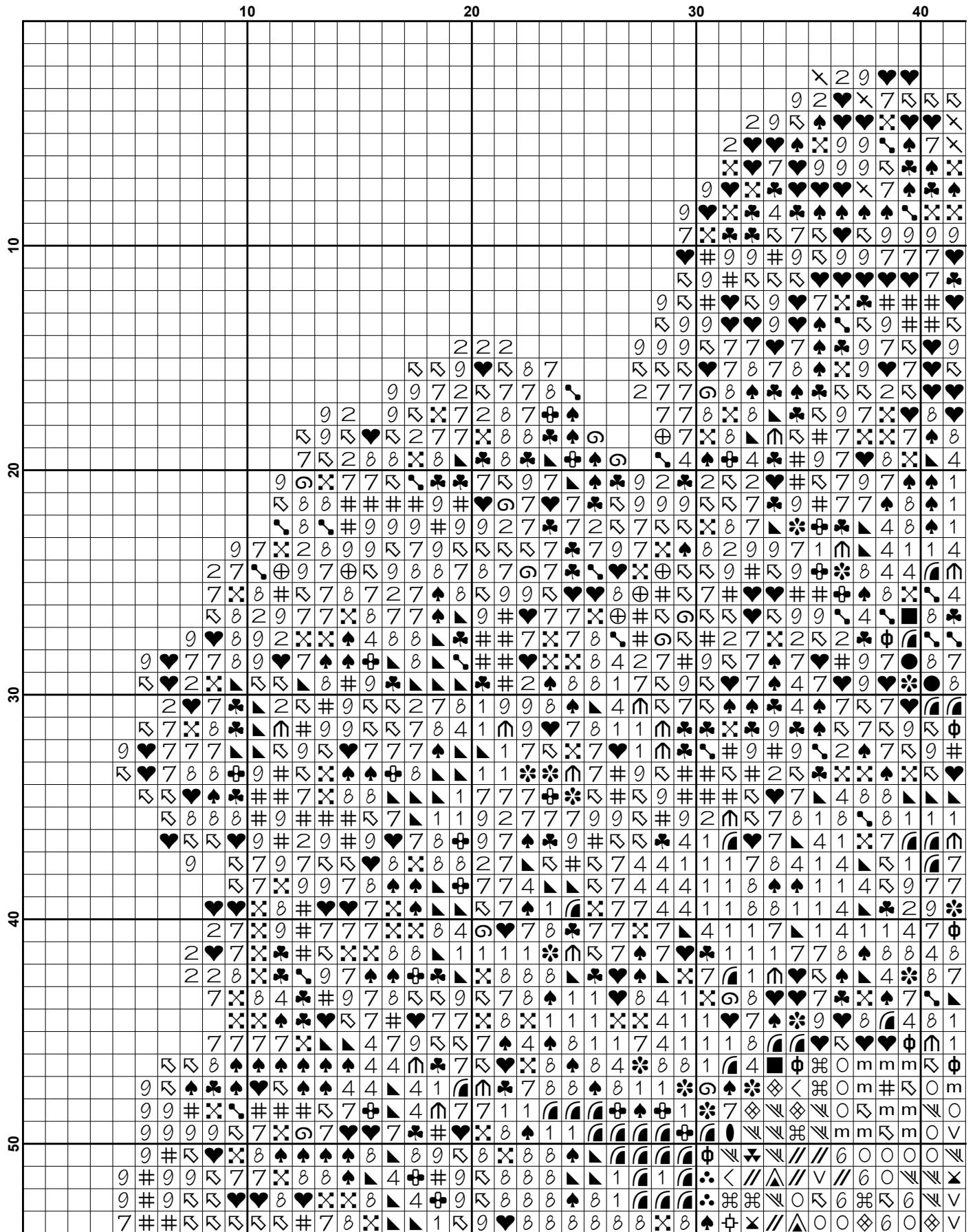
We hope you enjoy stitching our pattern.

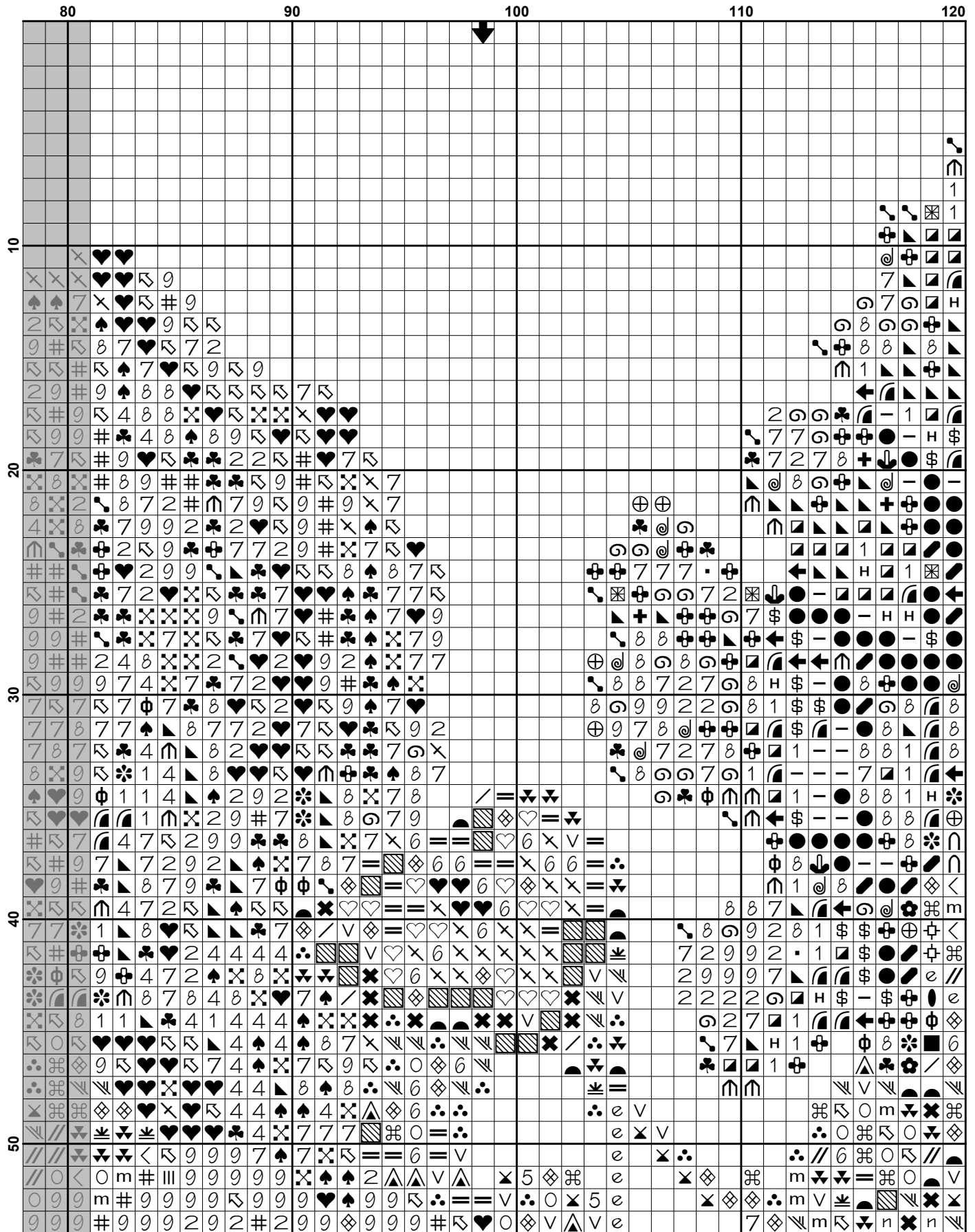
Thanks and Best Wishes
Tereena Clarke

Artecy Cross Stitch
Po Box 3474
Tuggerah, NSW 2259
Australia

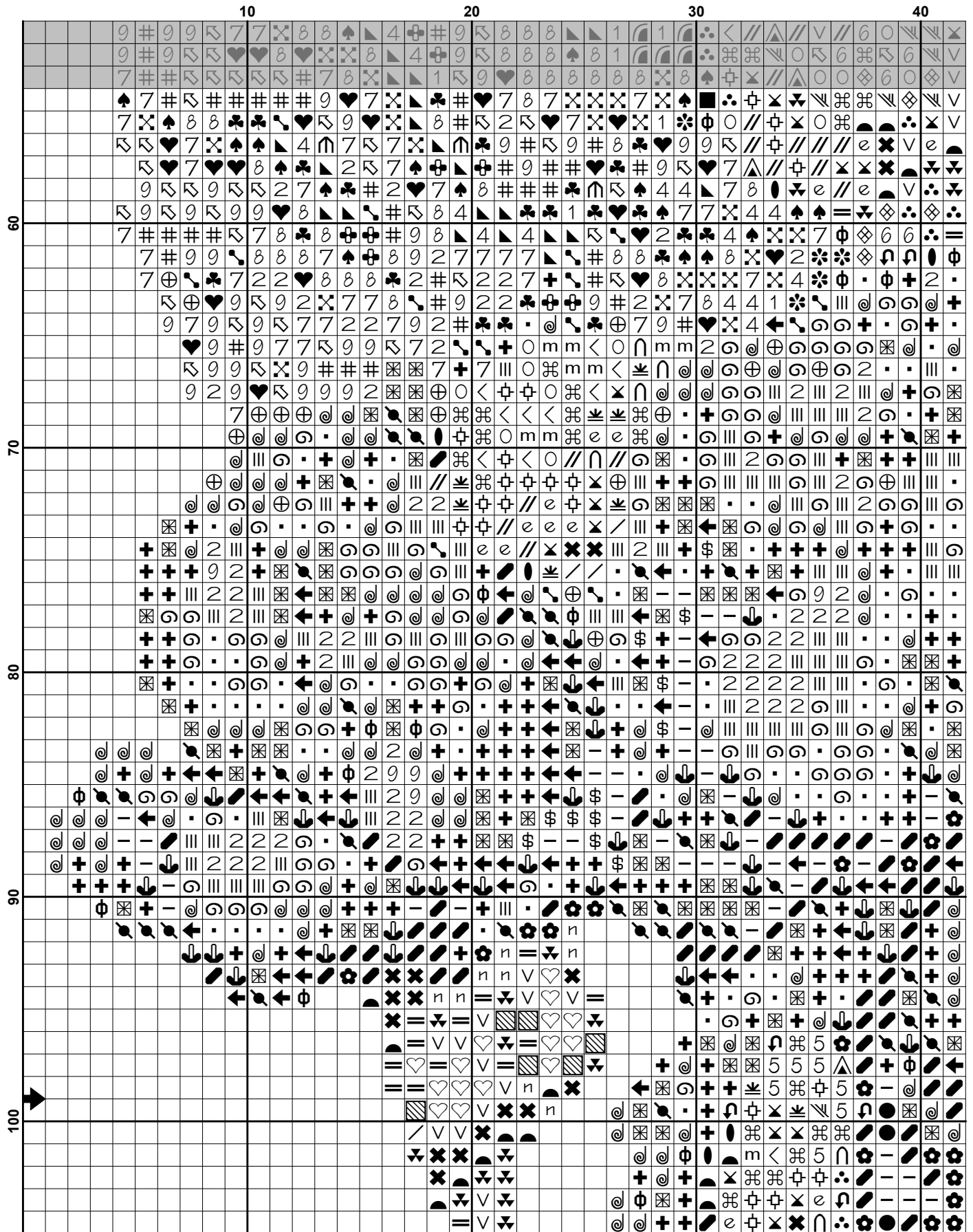
Websites: www.artecy.com and www.artecyshop.com
Email: artecy@artecy.com or stitch@artecyshop.com

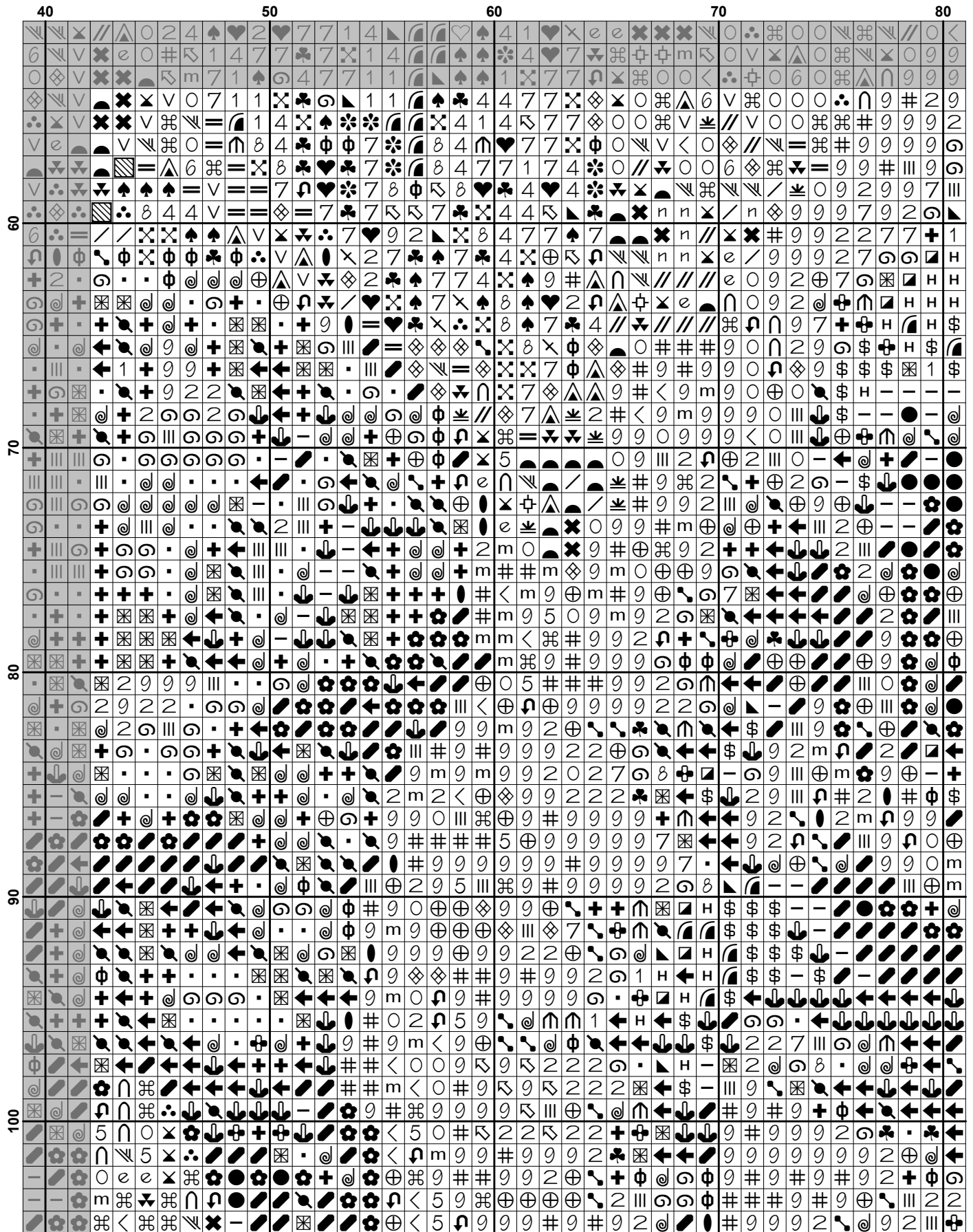
*Patterns are strictly for personal use only. It is against our copyright to make kits for sale from our designs or to sell, copy or redistribute this pattern in any form. You may not upload our patterns to any internet forums or groups or any other website. You may make 1 copy of this pattern for a working copy for your own personal use if needed.

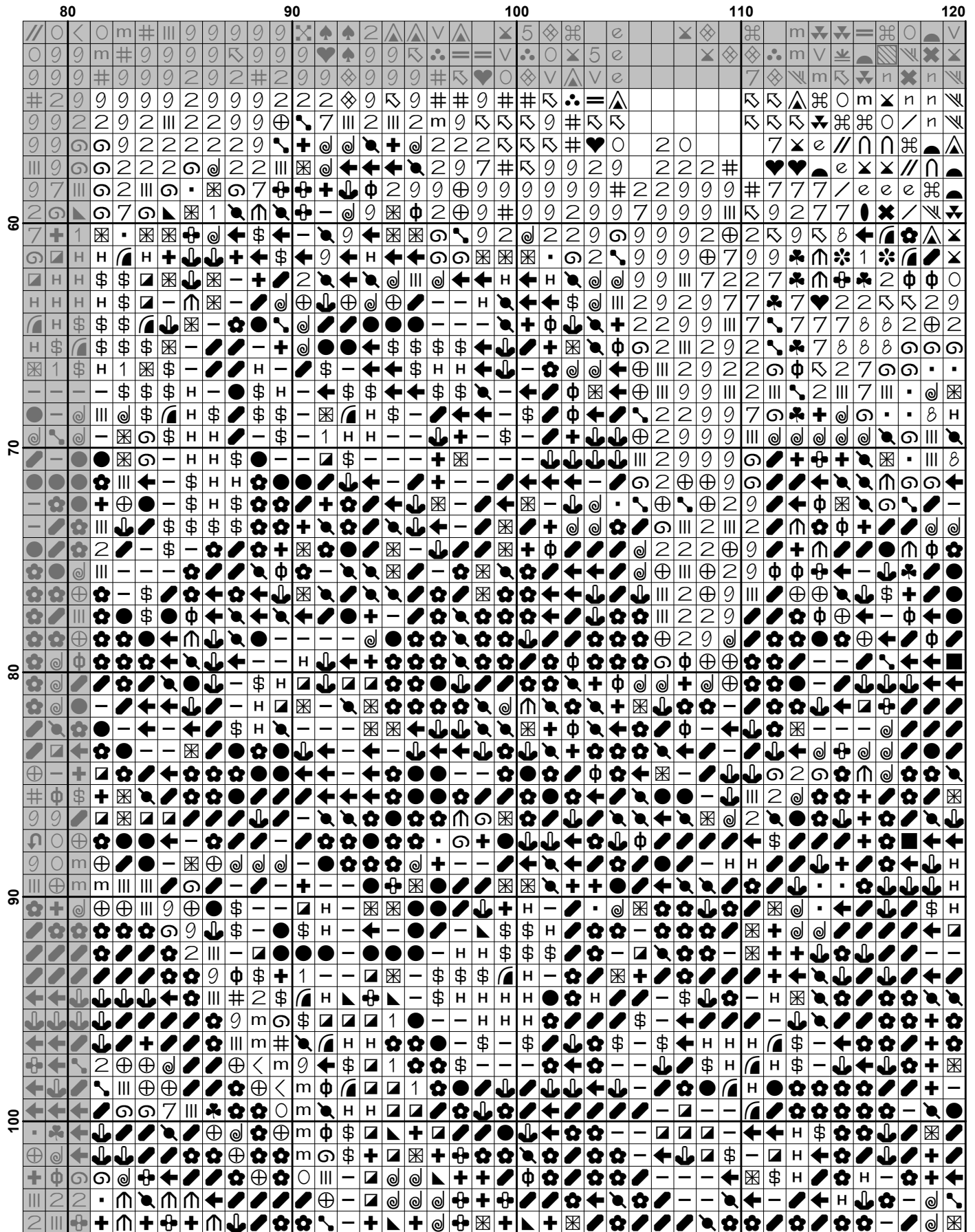


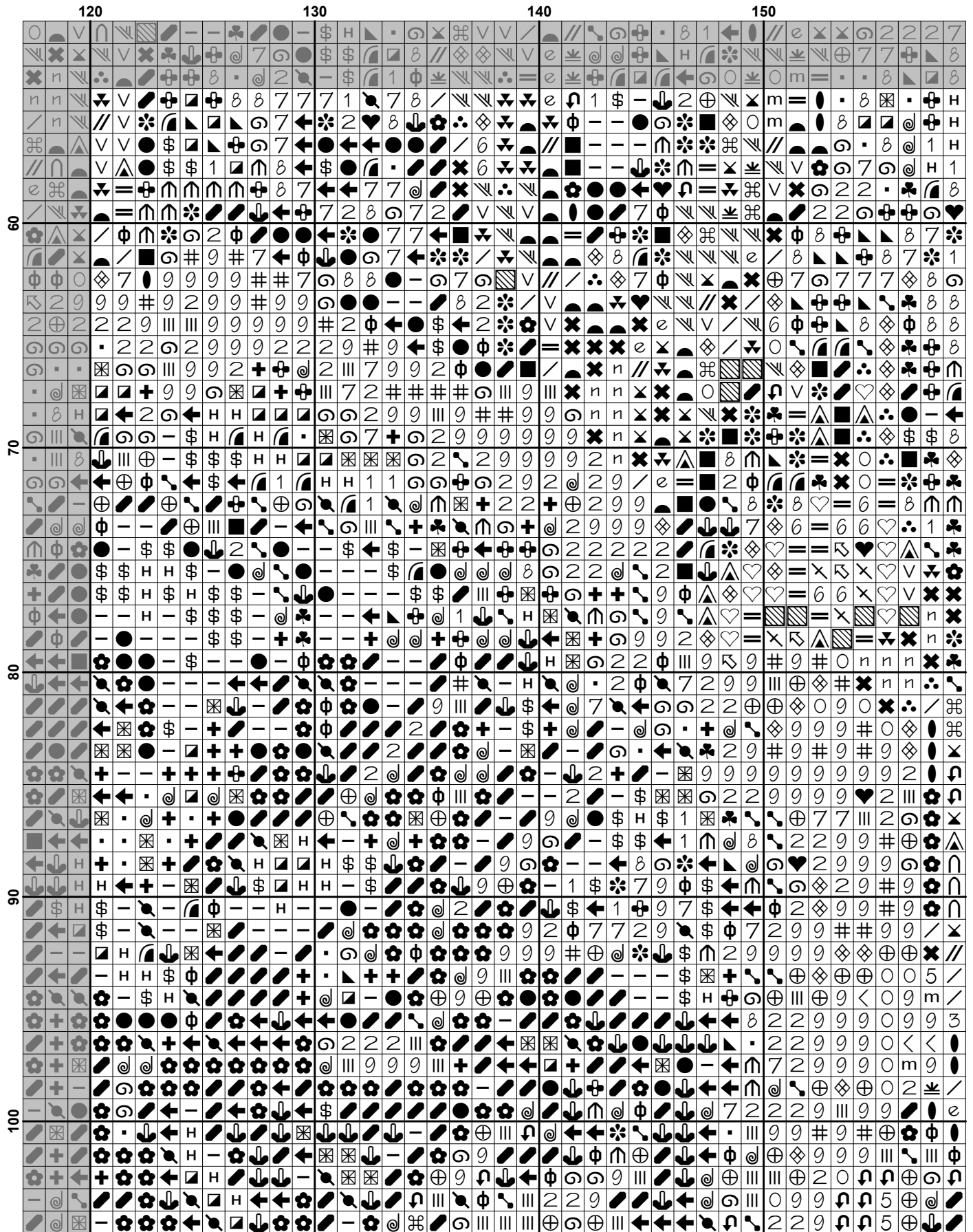


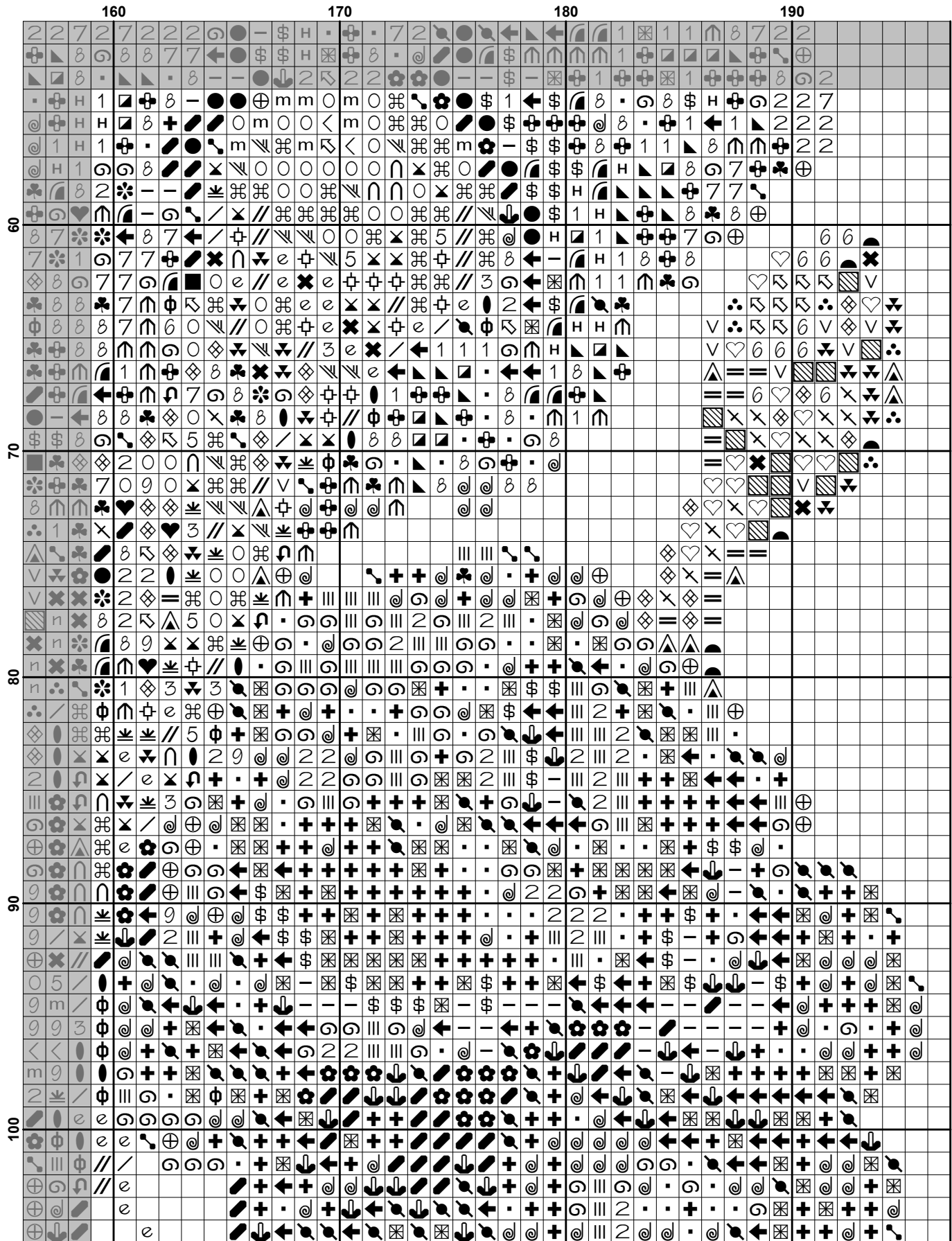
	120	130	140	150
10				
20				
30				
40				
50				

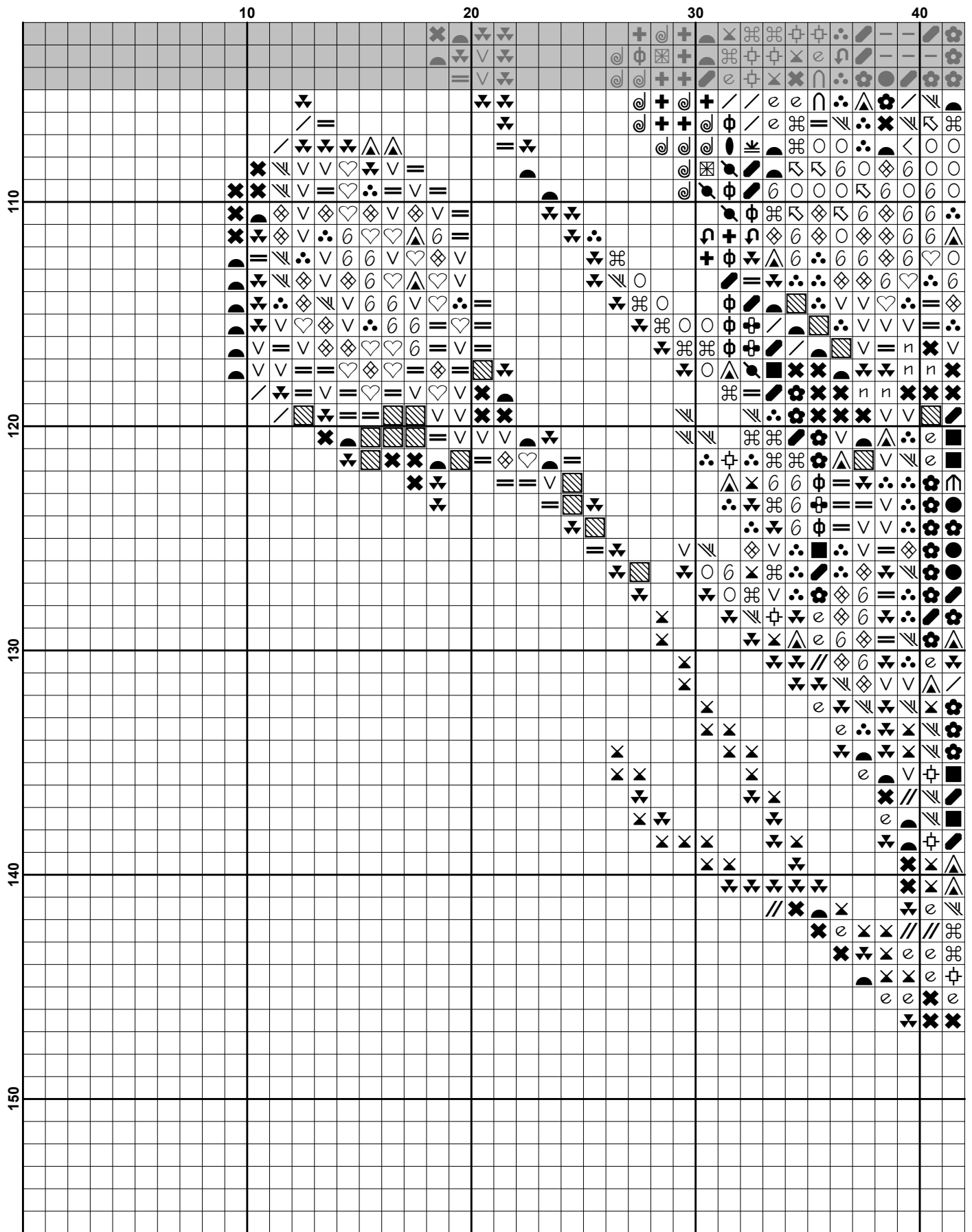


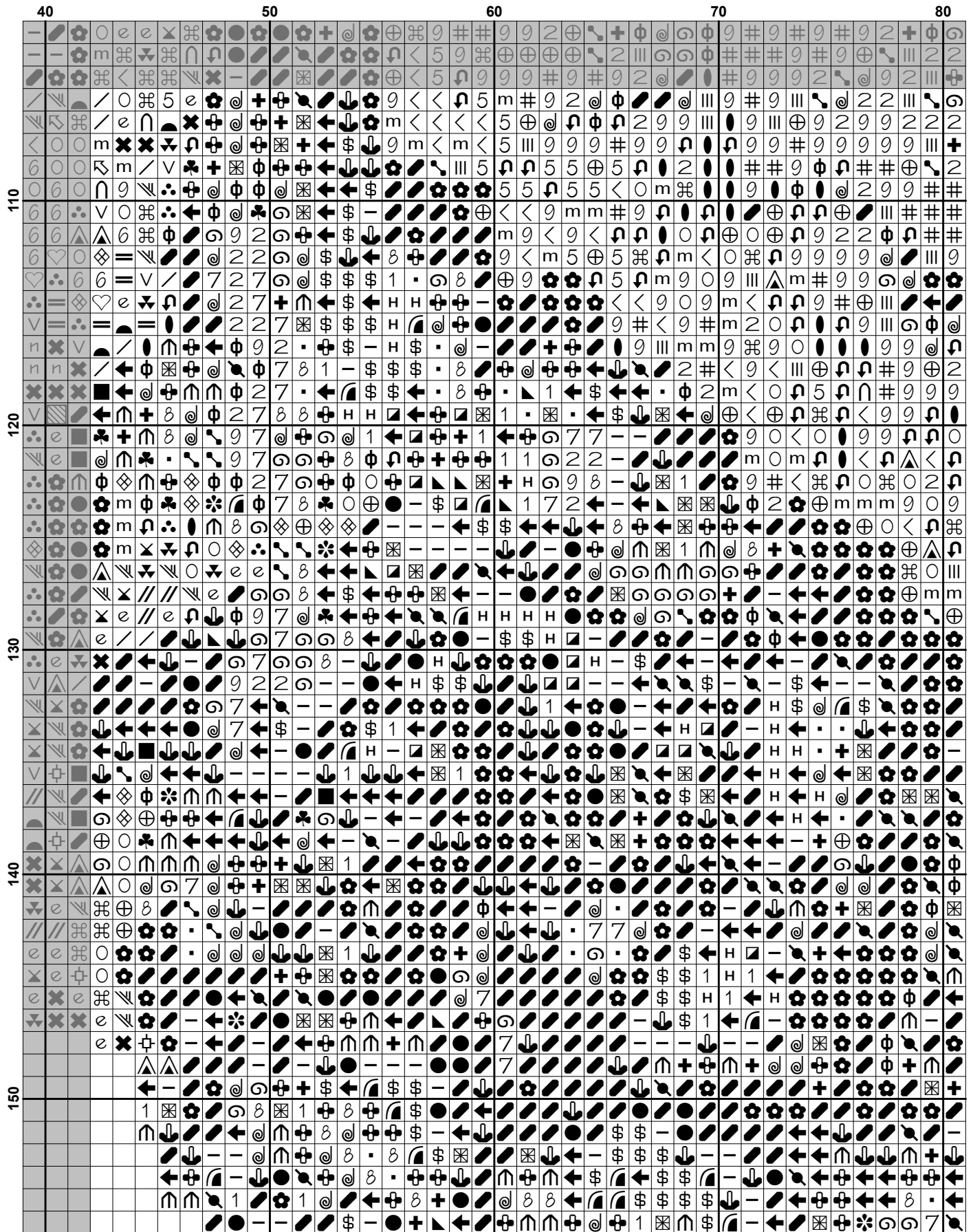


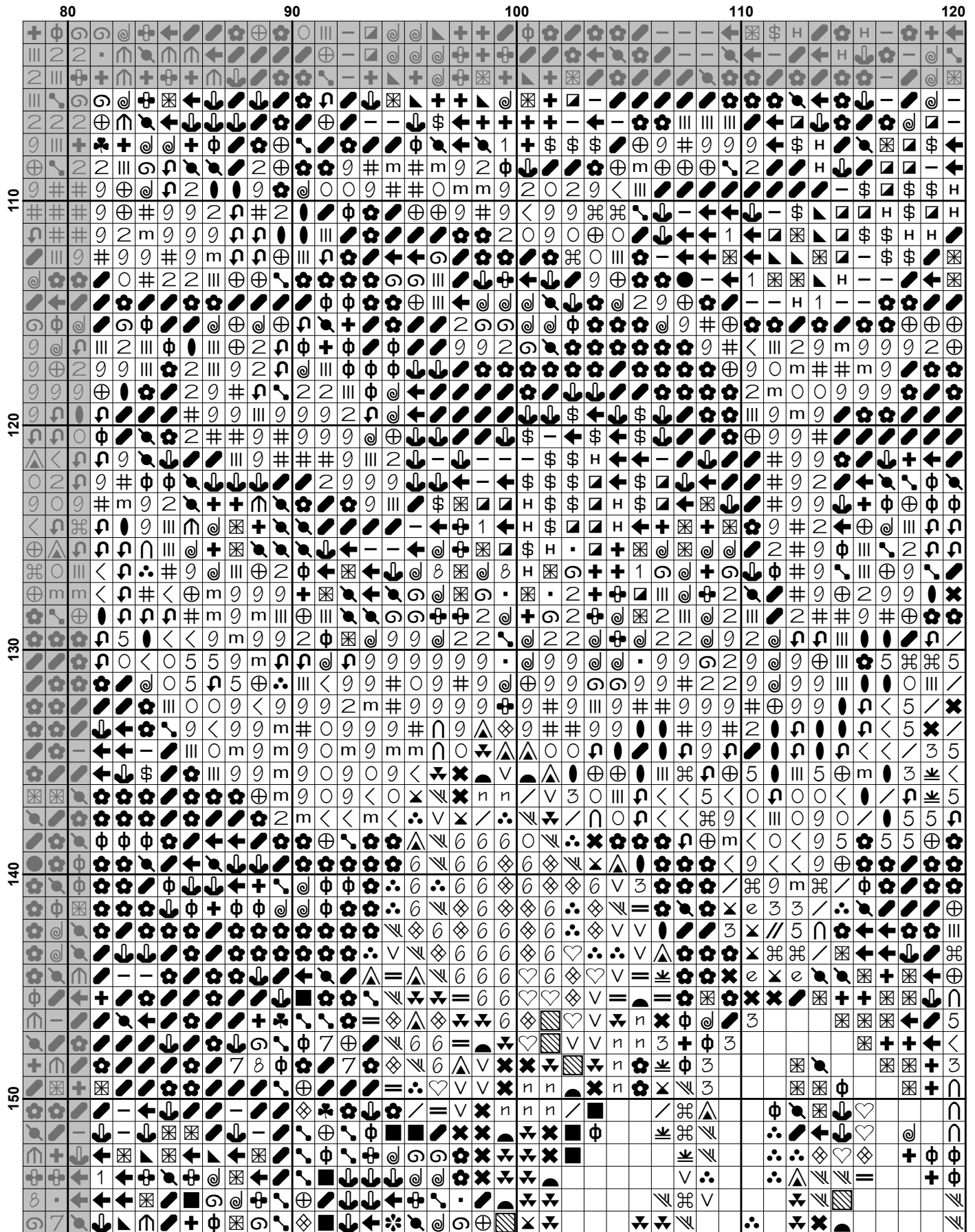




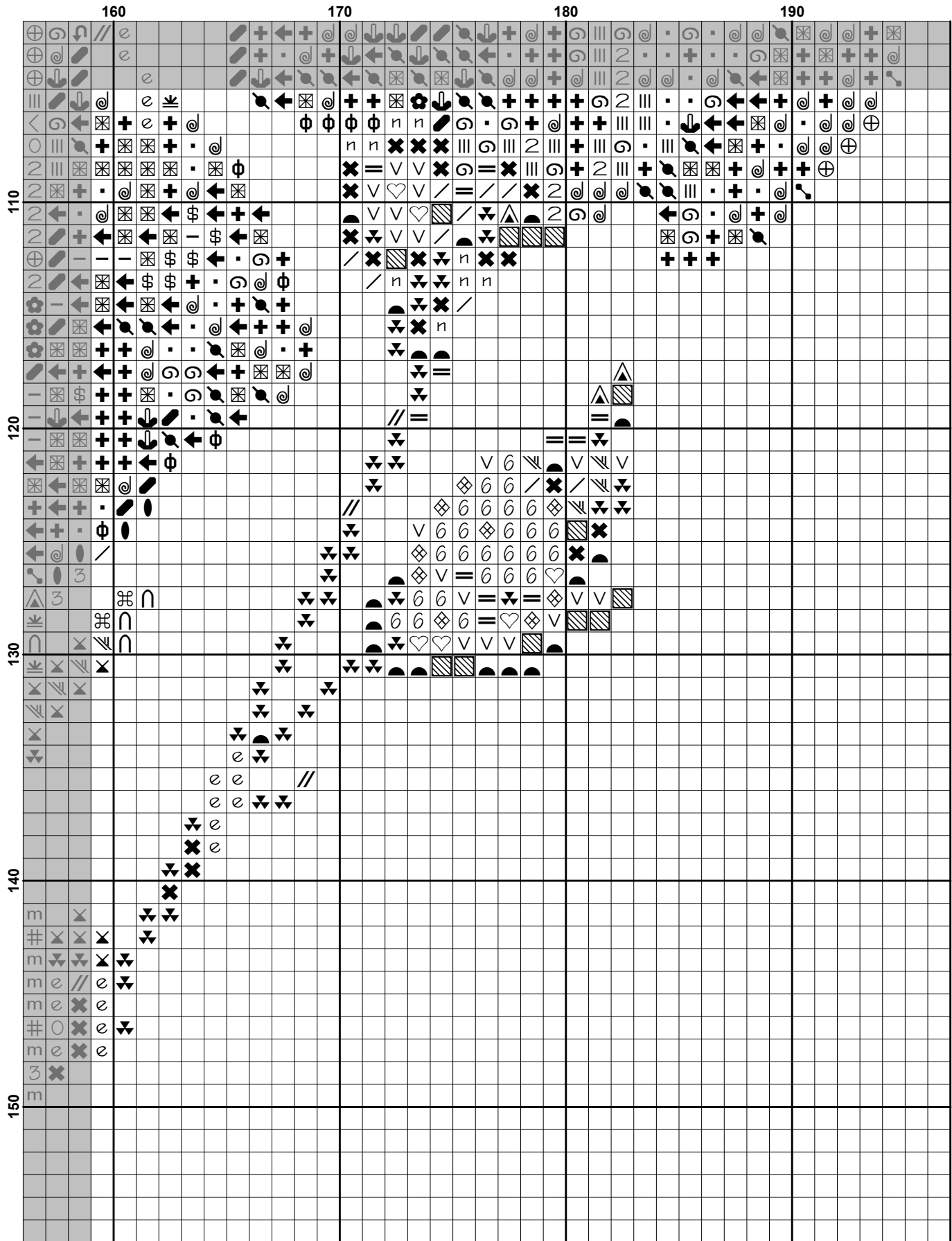


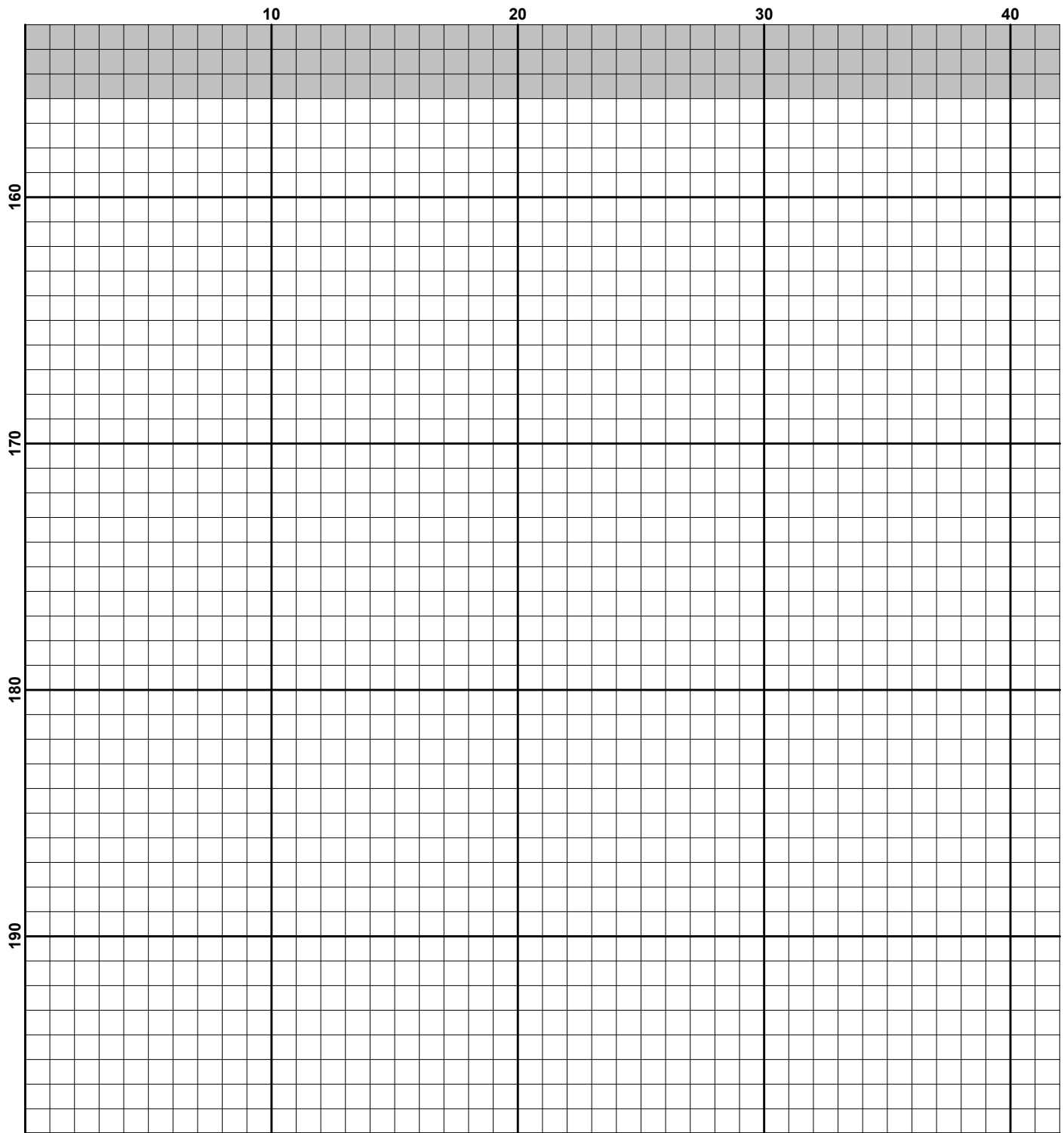


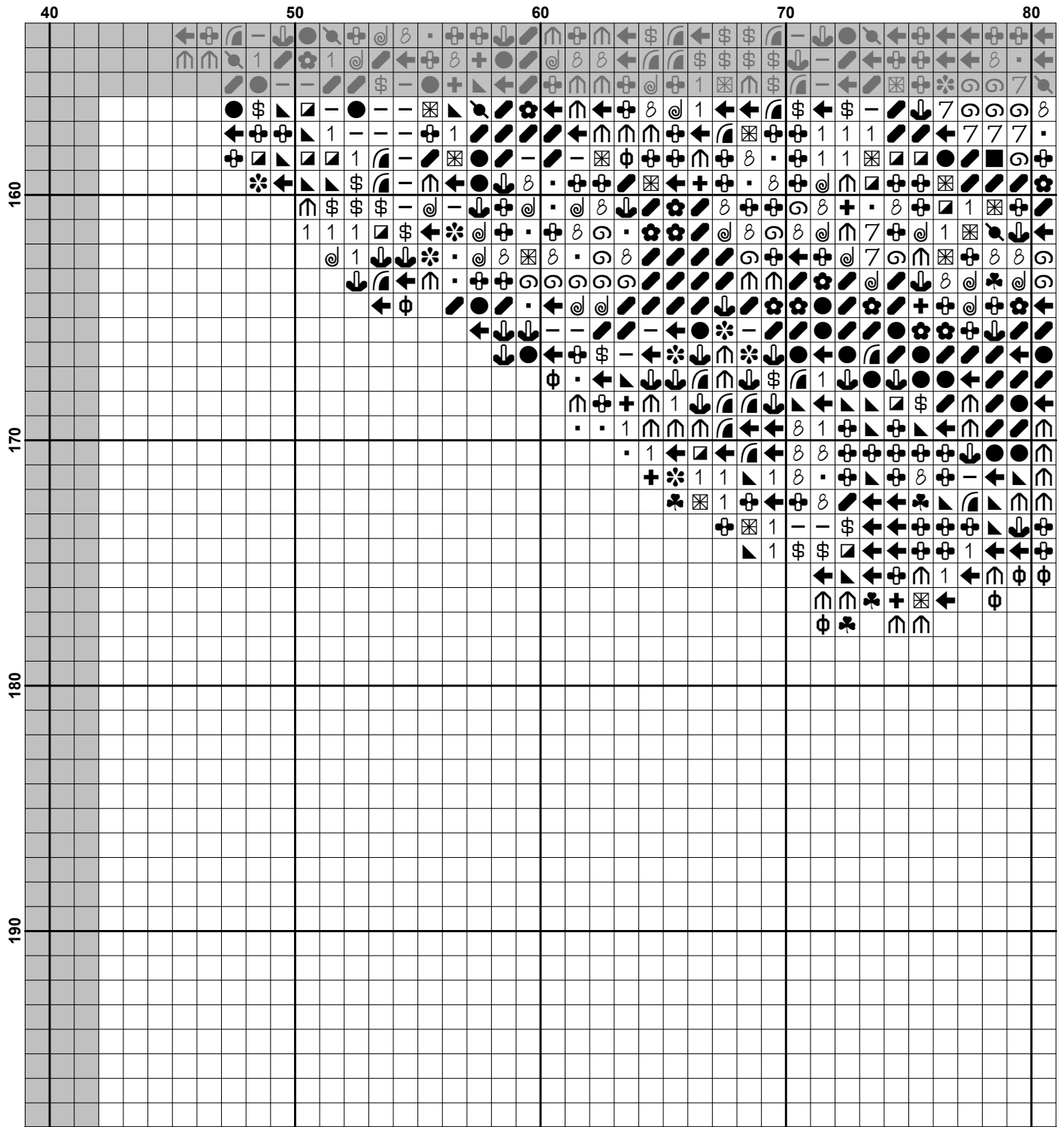


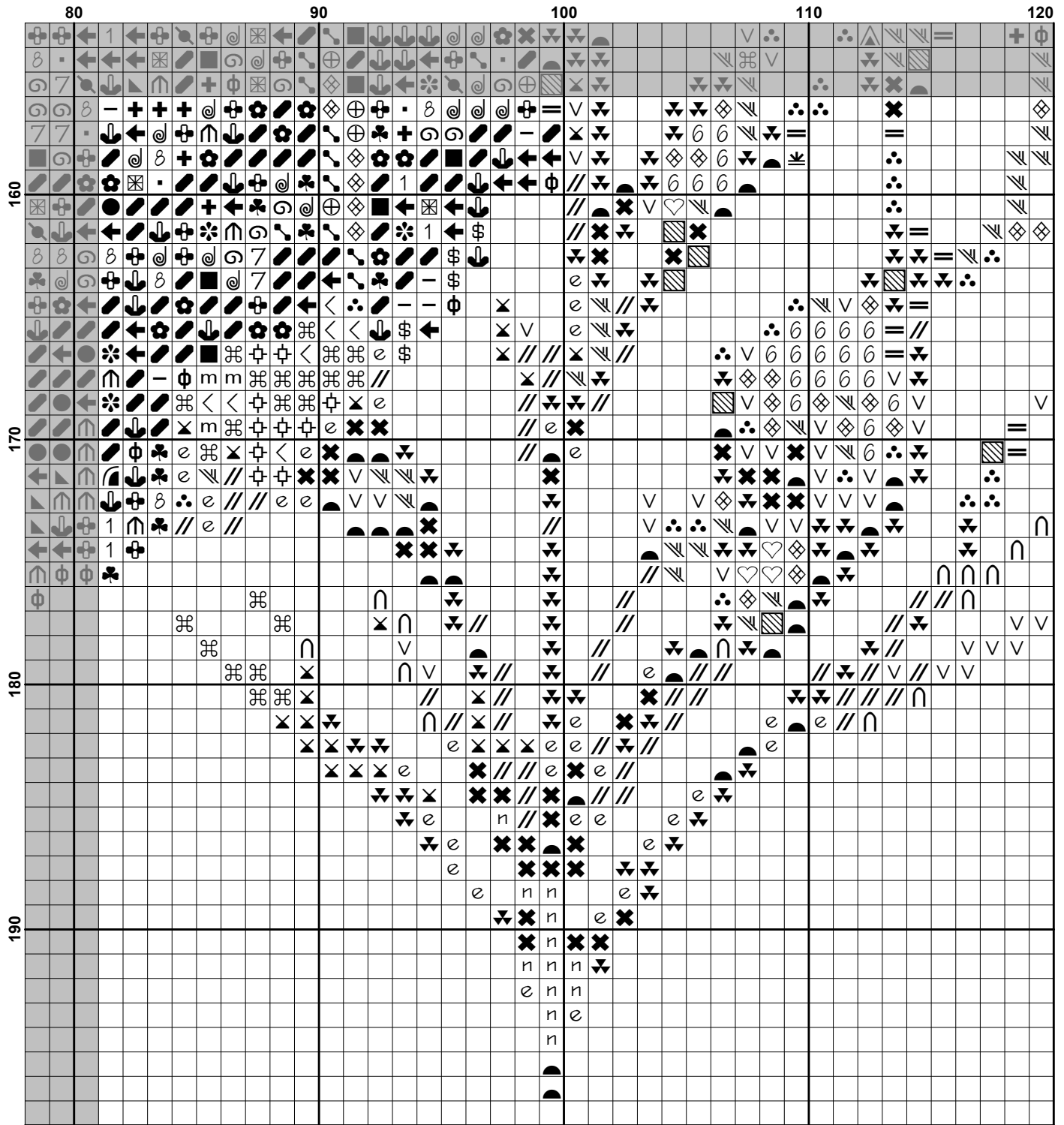


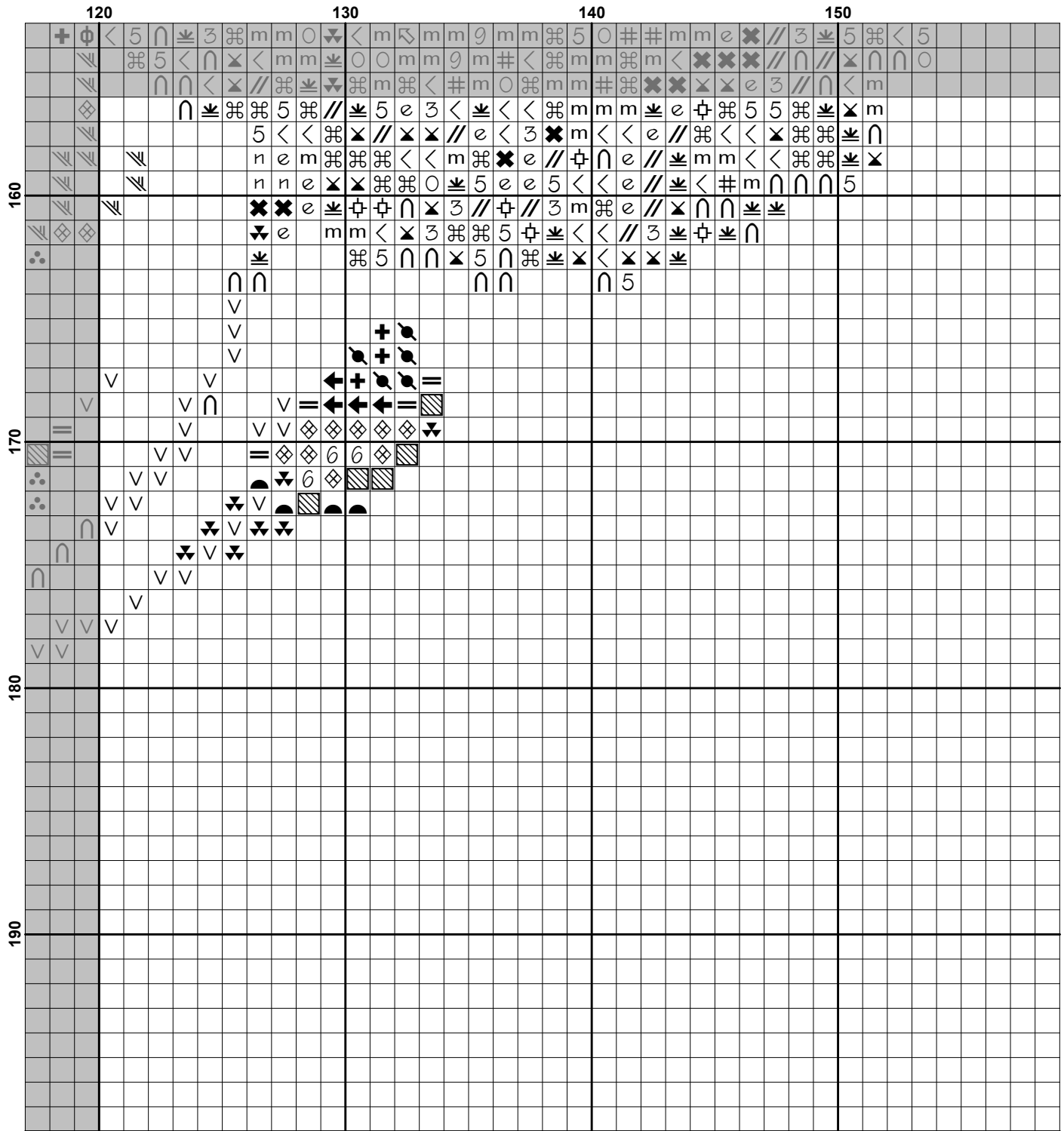
		120		130		140		150	
110	+	+	+	+	+	+	+	+	+
120	+	+	+	+	+	+	+	+	+
130	+	+	+	+	+	+	+	+	+
140	+	+	+	+	+	+	+	+	+
150	+	+	+	+	+	+	+	+	+

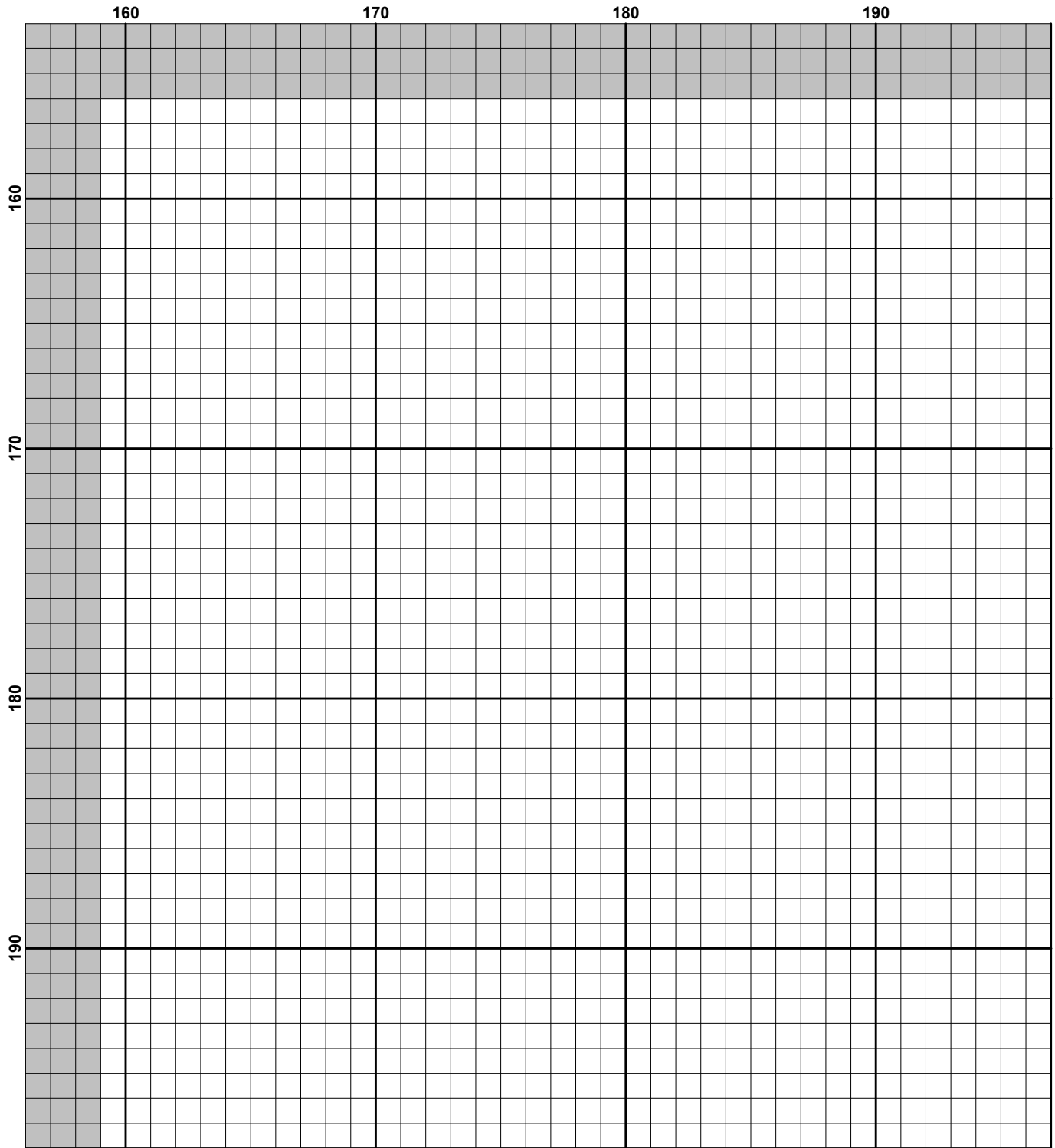









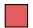






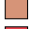
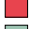





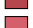

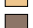







Pattern Name: Mini Carnations Heart
Designed By: Artwork by Tereena Clarke
Company: Artecy Cross Stitch
Copyright: Copyright Artecy Cross Stitch. All rights Reserved.
Fabric: Aida 14, White
 195w X 196h Stitches
Size(s): 14 Count, 13-7/8w X 14h in
 16 Count, 12-1/8w X 12-1/4h in
 18 Count, 10-3/4w X 10-7/8h in

Floss Used for Full Stitches:

Symbol	Strands	Type	Number	Color
	2	DMC	152	Shell Pink-MD LT
	2	DMC	169	Pewter-LT
	2	DMC	320	Pistachio Green-MD
	2	DMC	321	Christmas Red
	2	DMC	326	Rose-VY DK
	2	DMC	349	Coral-DK
	2	DMC	350	Coral-MD
	2	DMC	351	Coral
	2	DMC	352	Coral-LT
	2	DMC	353	Peach
	2	DMC	355	Terra Cotta-DK
	2	DMC	367	Pistachio Green-DK
	2	DMC	368	Pistachio Green-LT
	2	DMC	402	Mahogany-VY LT
	2	DMC	414	Steel Gray-DK
	2	DMC	415	Pearl Gray
	2	DMC	498	Christmas Red-DK
	2	DMC	500	Blue Green-VY DK
	2	DMC	524	Fern Green-VY LT
	2	DMC	535	Ash Gray-VY LT
	2	DMC	644	Beige Gray-MD
	2	DMC	647	Beaver Gray-MD
	2	DMC	677	Old Gold-VY LT
	2	DMC	762	Pearl Gray-VY LT
	2	DMC	772	Yellow Green-VY LT
	2	DMC	814	Garnet-DK
	2	DMC	817	Coral Red-VY DK
	2	DMC	819	Baby Pink-LT
	2	DMC	894	Carnation-VY LT
	2	DMC	900	Burnt Orange-DK
	2	DMC	922	Copper-LT
	2	DMC	924	Gray Green--VY DK
	2	DMC	927	Gray Green-LT
	2	DMC	928	Gray Green-VY LT
	2	DMC	951	Tawny-LT
	2	DMC	961	Dusty Rose-DK
	2	DMC	962	Dusty Rose-MD
	2	DMC	966	Baby Green-MD
	2	DMC	3052	Green Gray-MD
	2	DMC	3072	Beaver Gray-VY LT
	2	DMC	3326	Rose-LT
	2	DMC	3328	Salmon-DK
	2	DMC	3346	Hunter Green
	2	DMC	3348	Yellow Green-LT
	2	DMC	3350	Dusty Rose-UL DK

Symbol	Strands	Type	Number	Color
	III	2	DMC 3689	Mauve-LT
	▣	2	DMC 3705	Melon-DK
	⊕	2	DMC 3712	Salmon-MD
	2	2	DMC 3713	Salmon-VY LT
	⊖	2	DMC 3722	Shell Pink-MD
	⊕	2	DMC 3727	Antique Mauve-LT
	m	2	DMC 3756	Baby Blue-UL VY LT
	↖	2	DMC 3770	Tawny-VY LT
	♣	2	DMC 3778	Terra Cotta-LT
	H	2	DMC 3801	Christmas Red-LT
	⊕	2	DMC 3813	Blue Green-LT
	e	2	DMC 3815	Celadon Green-DK
	//	2	DMC 3816	Celadon Green-MD
	X	2	DMC 3817	Celadon Green-LT
	✻	2	DMC 3830	Terra Cotta-MD
	←	2	DMC 3831	Raspberry-DK
	⊗	2	DMC 3832	Raspberry-MD
	X	2	DMC 3856	Mahogany-UL VY LT
	●	2	DMC 3860	Cocoa
	↶	2	DMC 3861	Cocoa-LT
	#	2	DMC 3865	Winter White

Notes:

The middle of this pattern can be found on page 8 and is 99 stitches across and 99 stitches down.

Pattern layout using page numbers in top left.

```

1  2  3  4  5
6  7  8  9 10
11 12 13 14 15
16 17 18 19 20
















```


Usage Summary

Strands Per Skein: 6

Skein Length: 313.0 in

Type	Number	Full	Half	Quarter	Petite	Back(in)	Str(in)	Spec(in)	French	Bead	Skein Est.
DMC 152	152	246	0	0	0	0.0	0.0	0.0	0	0	1.000
DMC 169	169	126	0	0	0	0.0	0.0	0.0	0	0	1.000
DMC 320	320	356	0	0	0	0.0	0.0	0.0	0	0	1.000
DMC 321	321	853	0	0	0	0.0	0.0	0.0	0	0	1.000
DMC 326	326	602	0	0	0	0.0	0.0	0.0	0	0	1.000
DMC 349	349	581	0	0	0	0.0	0.0	0.0	0	0	1.000
DMC 350	350	411	0	0	0	0.0	0.0	0.0	0	0	1.000
DMC 351	351	358	0	0	0	0.0	0.0	0.0	0	0	1.000
DMC 352	352	603	0	0	0	0.0	0.0	0.0	0	0	1.000
DMC 353	353	809	0	0	0	0.0	0.0	0.0	0	0	1.000
DMC 355	355	88	0	0	0	0.0	0.0	0.0	0	0	1.000
DMC 367	367	202	0	0	0	0.0	0.0	0.0	0	0	1.000
DMC 368	368	251	0	0	0	0.0	0.0	0.0	0	0	1.000
DMC 402	402	293	0	0	0	0.0	0.0	0.0	0	0	1.000
DMC 414	414	69	0	0	0	0.0	0.0	0.0	0	0	1.000
DMC 415	415	176	0	0	0	0.0	0.0	0.0	0	0	1.000
DMC 498	498	1418	0	0	0	0.0	0.0	0.0	0	0	1.000
DMC 500	500	90	0	0	0	0.0	0.0	0.0	0	0	1.000
DMC 524	524	164	0	0	0	0.0	0.0	0.0	0	0	1.000
DMC 535	535	135	0	0	0	0.0	0.0	0.0	0	0	1.000
DMC 644	644	258	0	0	0	0.0	0.0	0.0	0	0	1.000
DMC 647	647	106	0	0	0	0.0	0.0	0.0	0	0	1.000
DMC 677	677	83	0	0	0	0.0	0.0	0.0	0	0	1.000
DMC 762	762	281	0	0	0	0.0	0.0	0.0	0	0	1.000
DMC 772	772	183	0	0	0	0.0	0.0	0.0	0	0	1.000
DMC 814	814	953	0	0	0	0.0	0.0	0.0	0	0	1.000
DMC 817	817	362	0	0	0	0.0	0.0	0.0	0	0	1.000
DMC 819	819	1296	0	0	0	0.0	0.0	0.0	0	0	1.000
DMC 894	894	451	0	0	0	0.0	0.0	0.0	0	0	1.000
DMC 900	900	288	0	0	0	0.0	0.0	0.0	0	0	1.000
DMC 922	922	233	0	0	0	0.0	0.0	0.0	0	0	1.000
DMC 924	924	274	0	0	0	0.0	0.0	0.0	0	0	1.000
DMC 927	927	154	0	0	0	0.0	0.0	0.0	0	0	1.000
DMC 928	928	416	0	0	0	0.0	0.0	0.0	0	0	1.000
DMC 951	951	398	0	0	0	0.0	0.0	0.0	0	0	1.000
DMC 961	961	745	0	0	0	0.0	0.0	0.0	0	0	1.000
DMC 962	962	813	0	0	0	0.0	0.0	0.0	0	0	1.000
DMC 966	966	247	0	0	0	0.0	0.0	0.0	0	0	1.000
DMC 3052	3052	198	0	0	0	0.0	0.0	0.0	0	0	1.000
DMC 3072	3072	409	0	0	0	0.0	0.0	0.0	0	0	1.000
DMC 3326	3326	770	0	0	0	0.0	0.0	0.0	0	0	1.000
DMC 3328	3328	323	0	0	0	0.0	0.0	0.0	0	0	1.000
DMC 3346	3346	108	0	0	0	0.0	0.0	0.0	0	0	1.000
DMC 3348	3348	116	0	0	0	0.0	0.0	0.0	0	0	1.000
DMC 3350	3350	439	0	0	0	0.0	0.0	0.0	0	0	1.000
DMC 3689	3689	375	0	0	0	0.0	0.0	0.0	0	0	1.000
DMC 3705	3705	279	0	0	0	0.0	0.0	0.0	0	0	1.000
DMC 3712	3712	533	0	0	0	0.0	0.0	0.0	0	0	1.000
DMC 3713	3713	865	0	0	0	0.0	0.0	0.0	0	0	1.000
DMC 3722	3722	312	0	0	0	0.0	0.0	0.0	0	0	1.000
DMC 3727	3727	341	0	0	0	0.0	0.0	0.0	0	0	1.000

Type	Number	Full	Half	Quarter	Petite	Back(in)	Str(in)	Spec(in)	French	Bead	Skein	Est.
 DMC	3756	366	0	0	0	0.0	0.0	0.0	0	0	1.000	
 DMC	3770	518	0	0	0	0.0	0.0	0.0	0	0	1.000	
 DMC	3778	314	0	0	0	0.0	0.0	0.0	0	0	1.000	
 DMC	3801	262	0	0	0	0.0	0.0	0.0	0	0	1.000	
 DMC	3813	104	0	0	0	0.0	0.0	0.0	0	0	1.000	
 DMC	3815	208	0	0	0	0.0	0.0	0.0	0	0	1.000	
 DMC	3816	186	0	0	0	0.0	0.0	0.0	0	0	1.000	
 DMC	3817	265	0	0	0	0.0	0.0	0.0	0	0	1.000	
 DMC	3830	175	0	0	0	0.0	0.0	0.0	0	0	1.000	
 DMC	3831	956	0	0	0	0.0	0.0	0.0	0	0	1.000	
 DMC	3832	666	0	0	0	0.0	0.0	0.0	0	0	1.000	
 DMC	3856	288	0	0	0	0.0	0.0	0.0	0	0	1.000	
 DMC	3860	153	0	0	0	0.0	0.0	0.0	0	0	1.000	
 DMC	3861	211	0	0	0	0.0	0.0	0.0	0	0	1.000	
 DMC	3865	454	0	0	0	0.0	0.0	0.0	0	0	1.000	