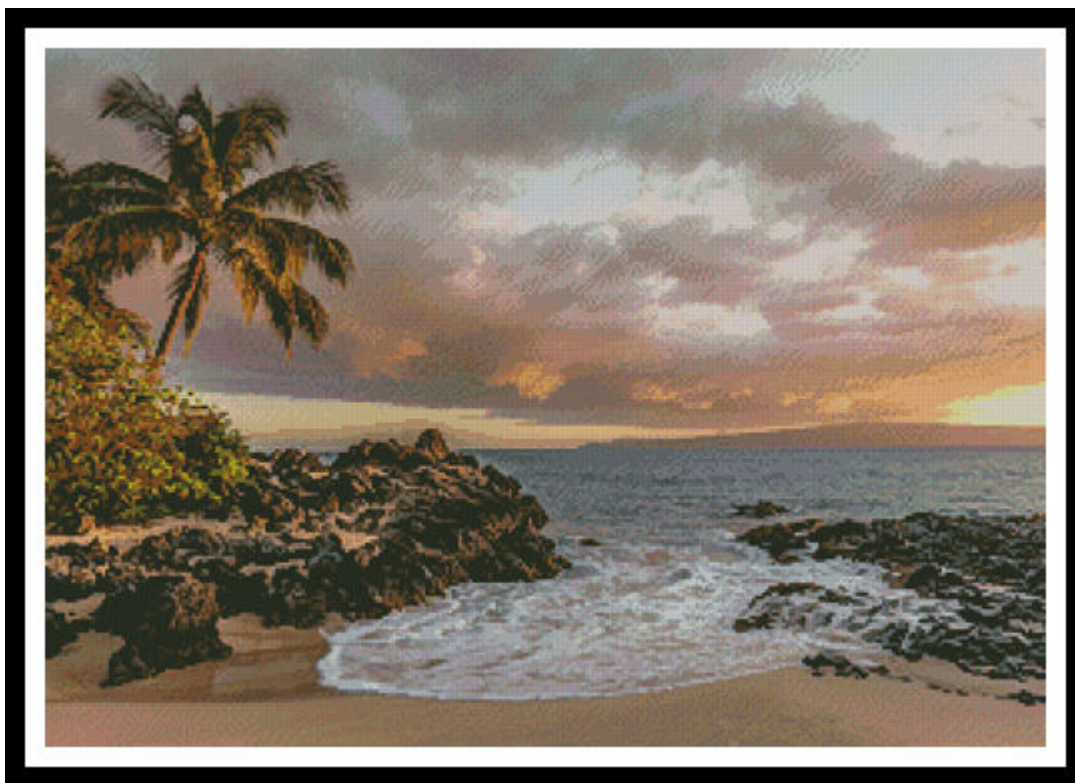


Artecy

CROSS STITCH

Kihe



* Original image©Christian Joudrey - Unsplash
Cross Stitch Design by Tereena Clarke.

Completed Size = 300w x 209h Stitches

14 Count, 21.5w x 15h inches (55cm x 38cm)

16 Count, 19w x 13h inches (48cm x 33cm)

18 Count, 17w x 12h inches (43cm x 30cm)

Uses 66 DMC cotton colours. Only full cross stitches are used in this pattern.

Pattern Instructions

* This pattern can be worked on any fabric type, colour or count you prefer. To work out the size of the finished article, take the number of stitches wide and high and divide it by the count of your fabric (e.g. 14,16,18 count aida etc) to get the size in inches. Times it by 2.54 to get centimetres. We have the sizes in inches shown on the previous page. Also leave at least a few inches of fabric around each side of the design to assist in framing. The higher the fabric count the smaller the completed project will be.

* To put the pattern together look in the top and bottom corners. The page numbers in brackets show which page number it joins up to. Page 1 always starts at the top left hand side of the pattern. Our pages also have a shaded grey section. This indicates a 3 row overlap from adjoining pages to assist with reading the pattern. PLEASE DO NOT RESTITCH THIS AREA.

* You should begin at the centre of the pattern. To find the centre of the pattern it is just a matter of laying the pattern out and locating the arrows at the top and left hand side of the patterns, they are determined by dividing the stitch numbers wide and high in half. Where the two points meet in the middle, that is the centre.

* If you need more assistance to find the middle of your pattern or the page layout, please see the notes section on the colour symbol chart. The easiest way to stitch this pattern, as it has multiple pages, is to stitch one page at a time.

* We suggest using two strands of floss for each stitch and one strand for backstitching if the pattern calls for it.

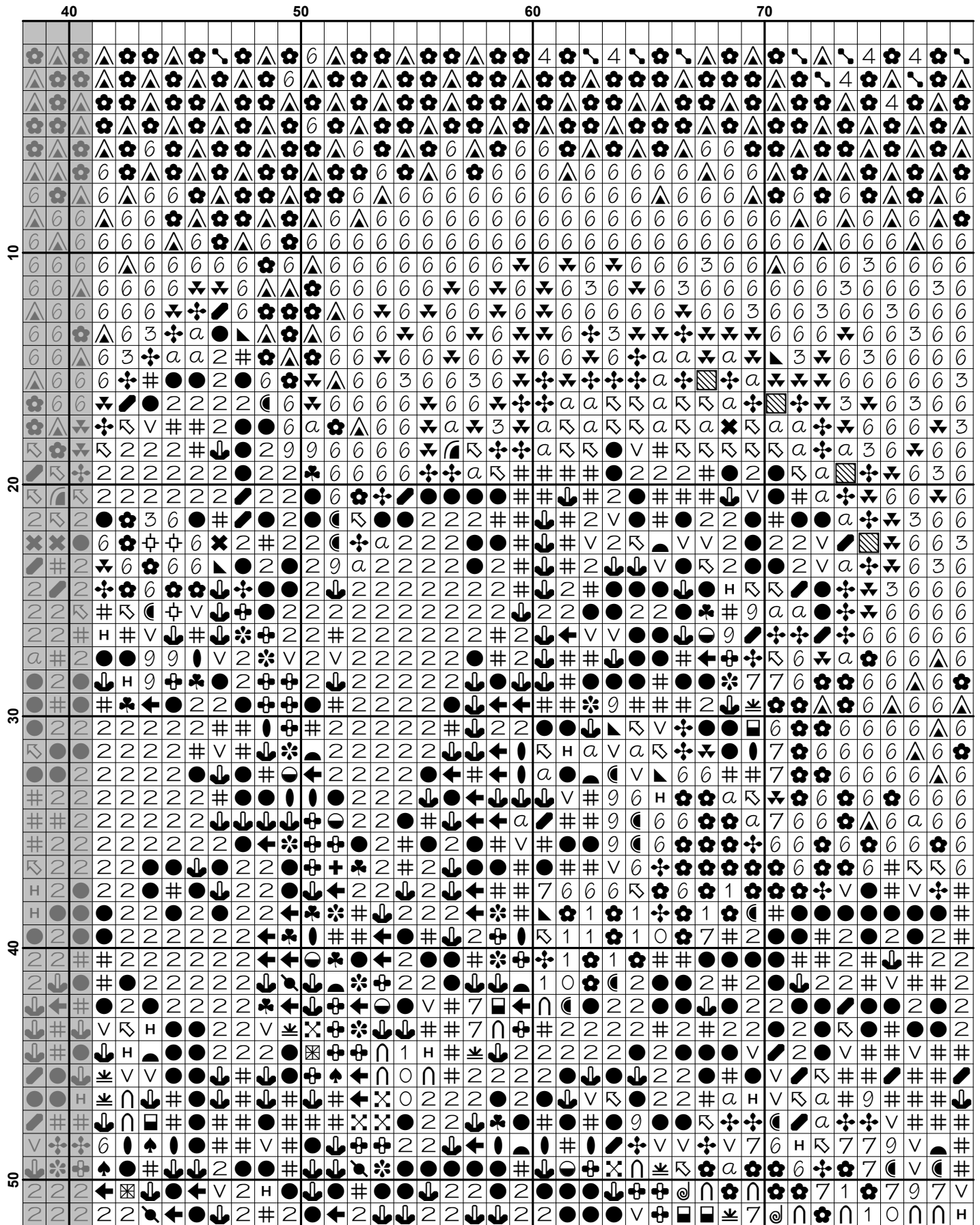
We hope you enjoy stitching our pattern.

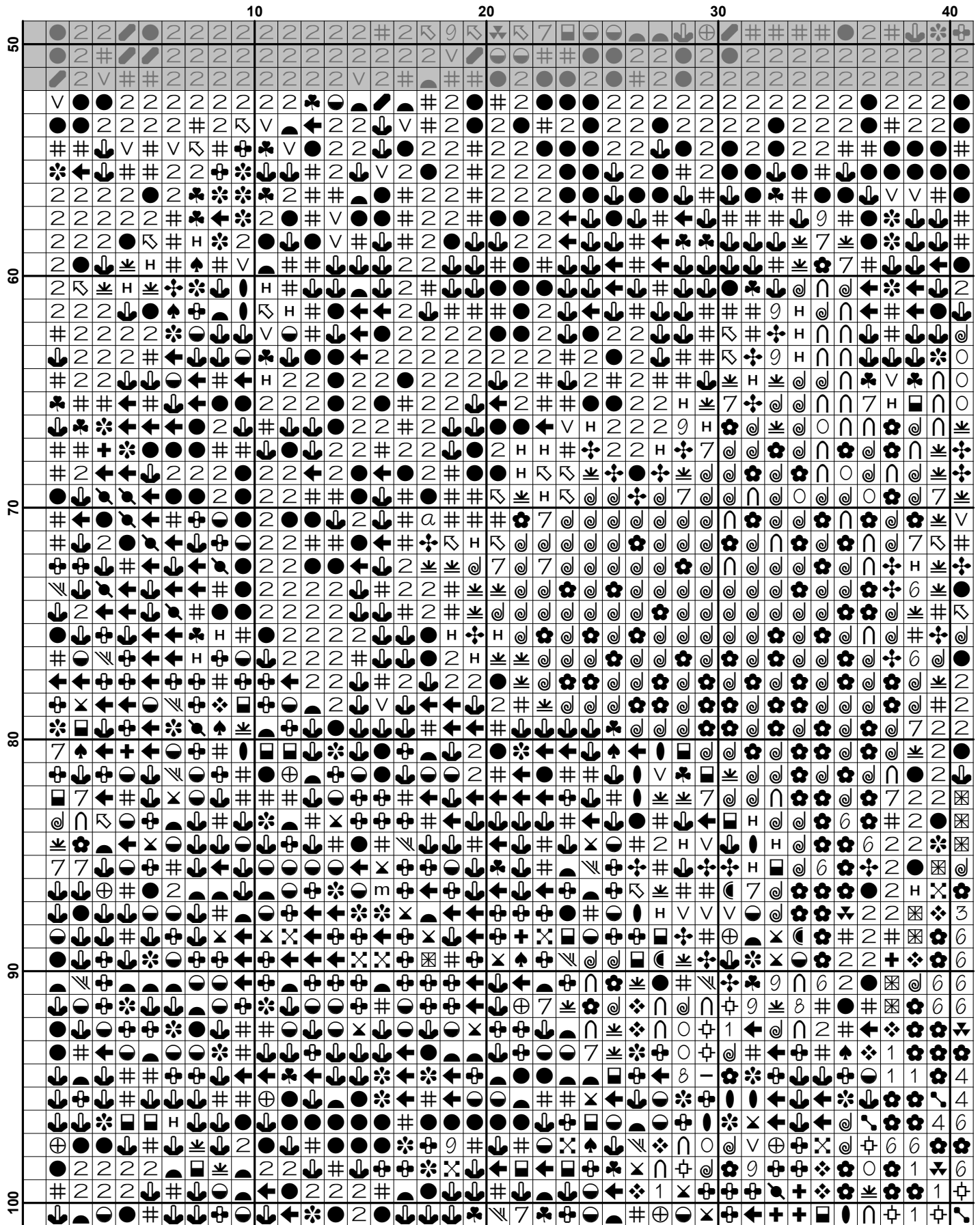
Thanks and Best Wishes
Tereena Clarke

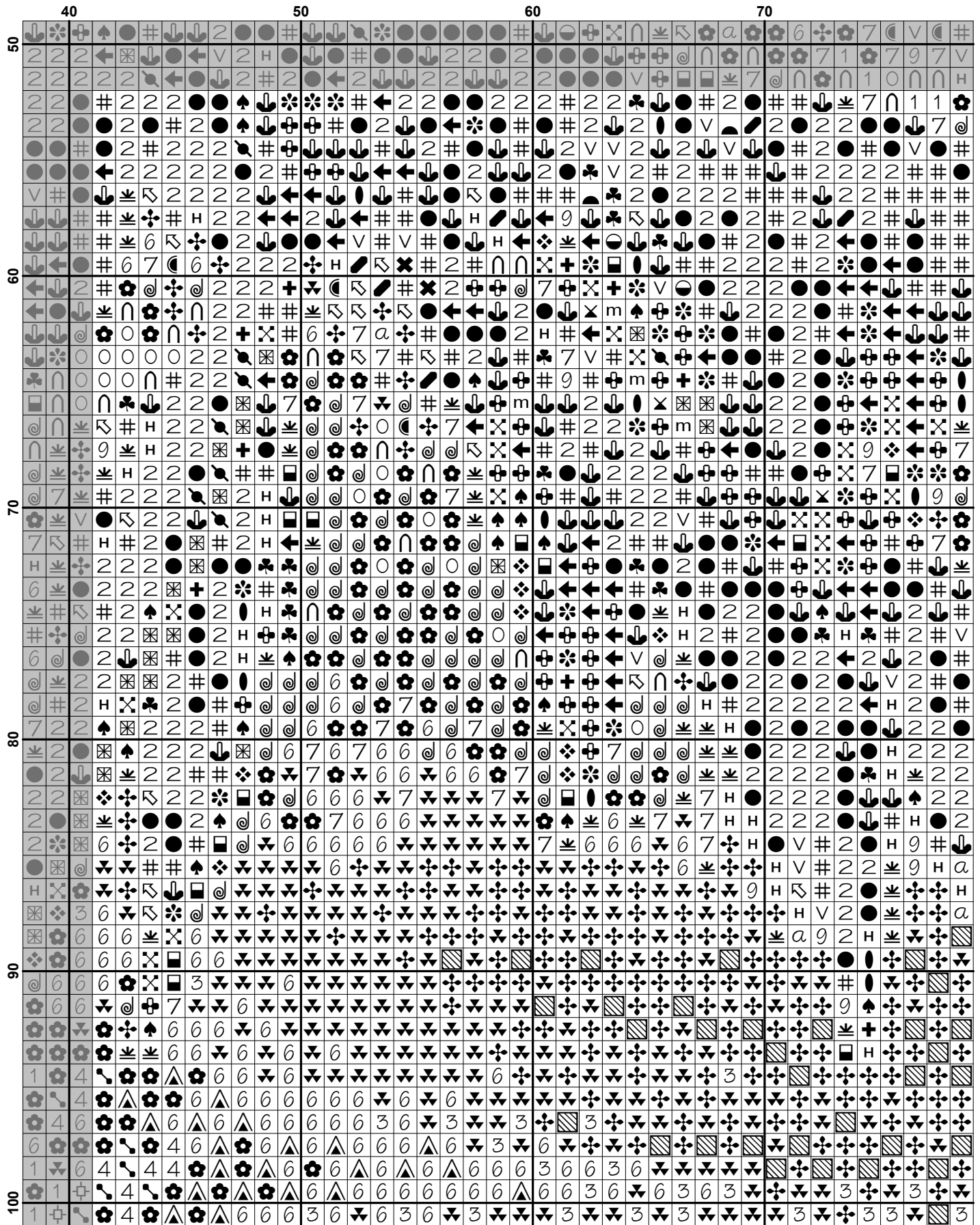
Artecy Cross Stitch
Po Box 3474
Tuggerah, NSW 2259
Australia

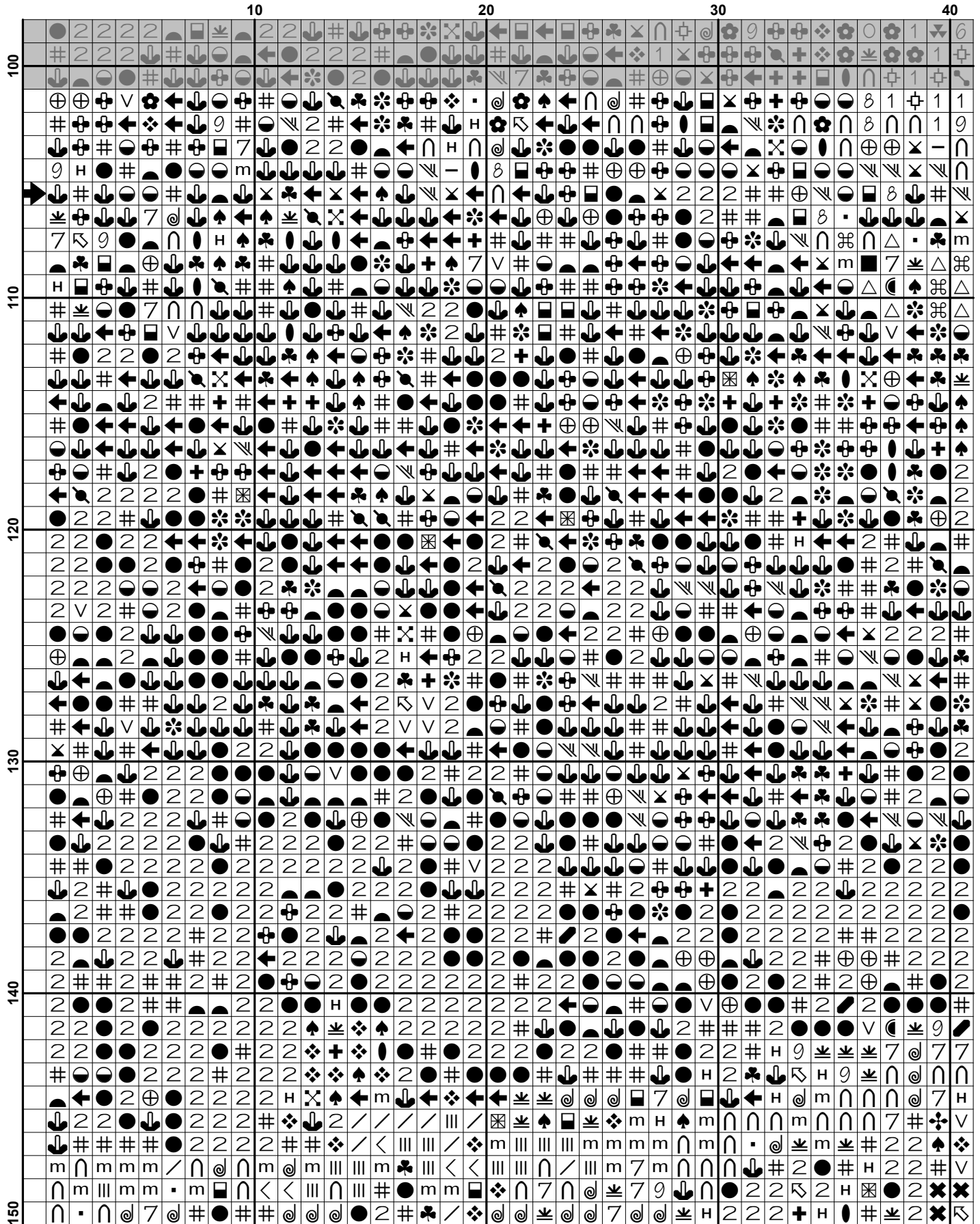
Websites: www.artecy.com and www.artecyshop.com
Email: artecy@artecy.com or stitch@artecyshop.com

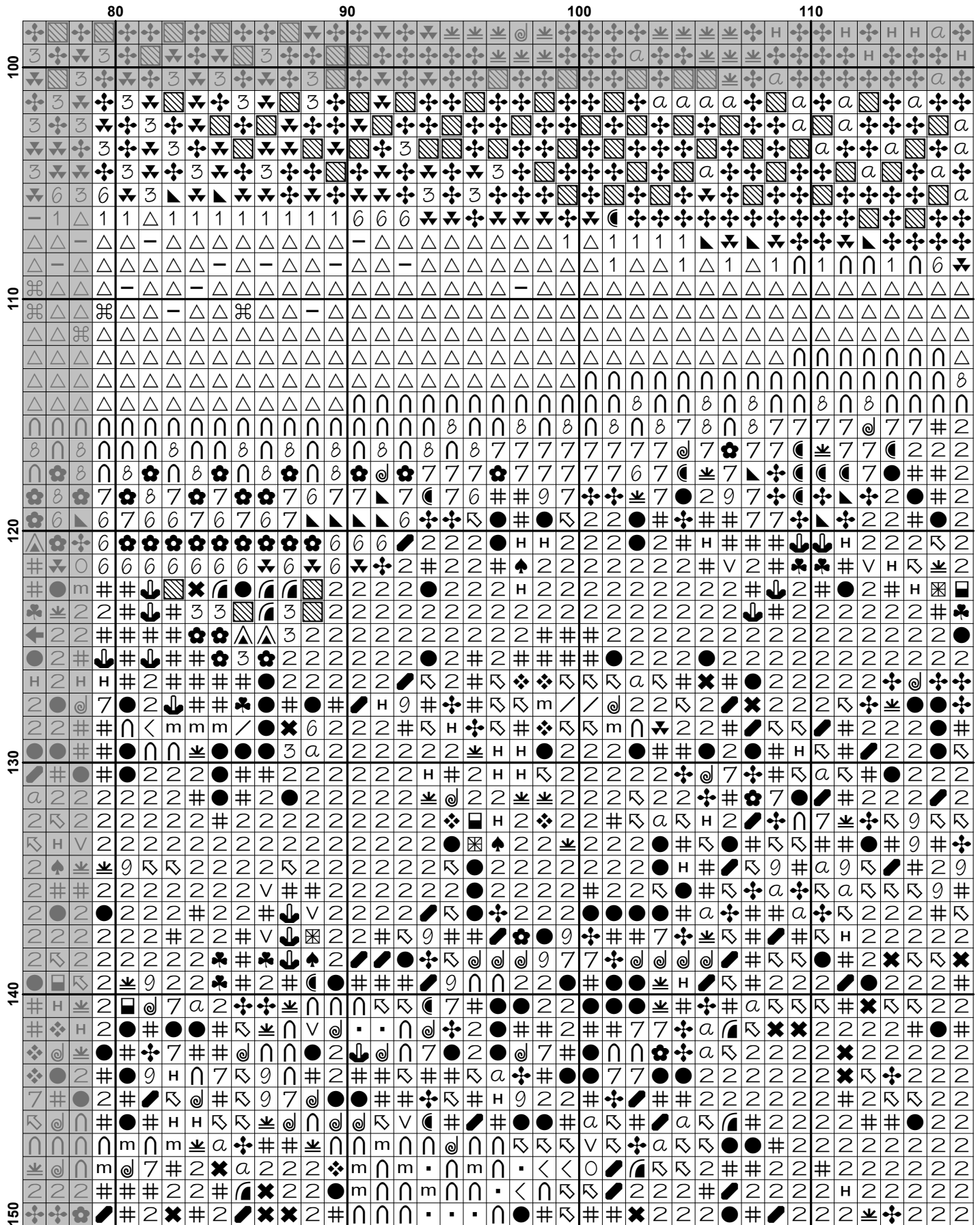
*Patterns are strictly for personal use only. It is against our copyright to make kits for sale from our designs or to sell, copy or redistribute this pattern in any form. You may not upload our patterns to any internet forums or groups or any other website. You may make 1 copy of this pattern for a working copy for your own personal use if needed.

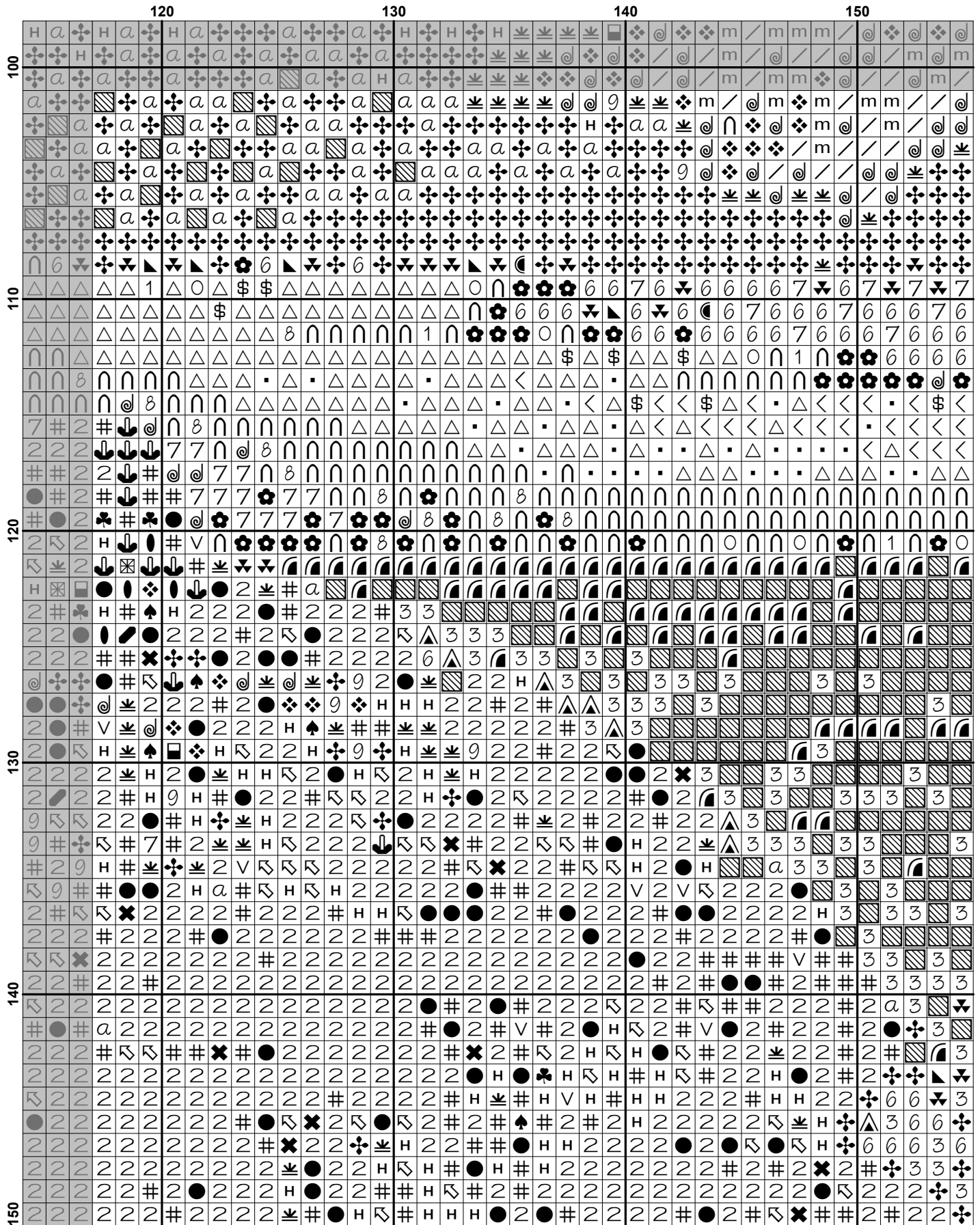


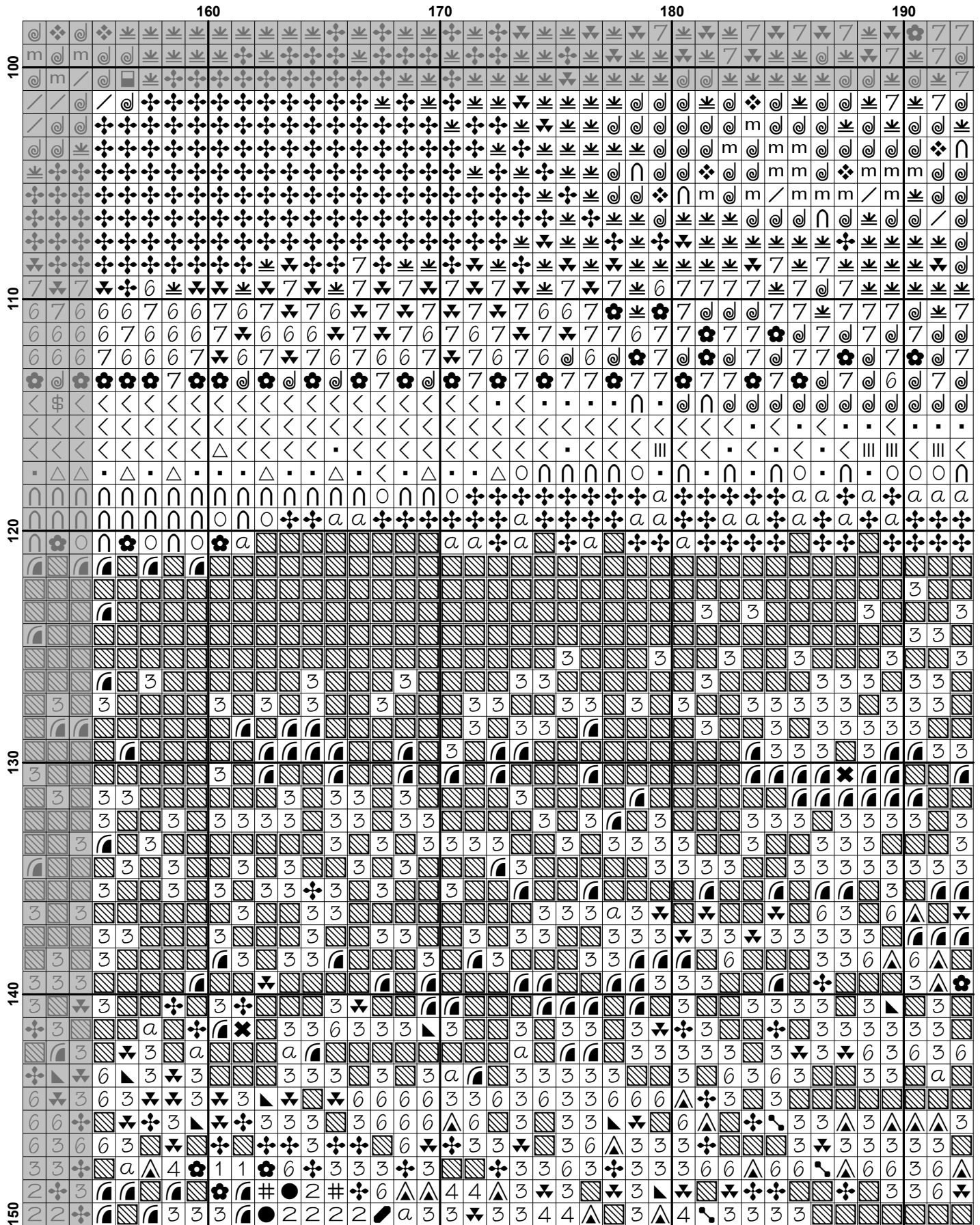


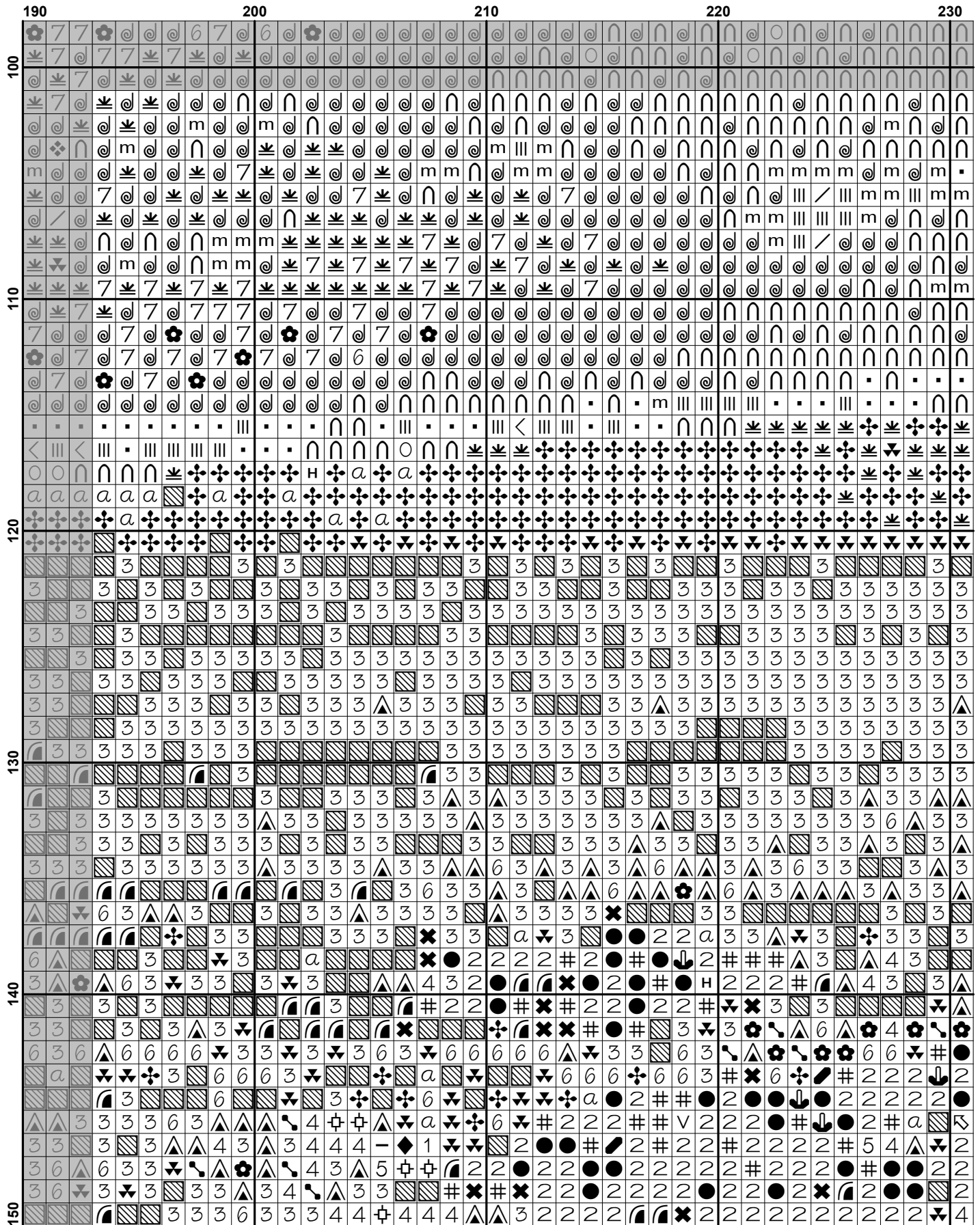


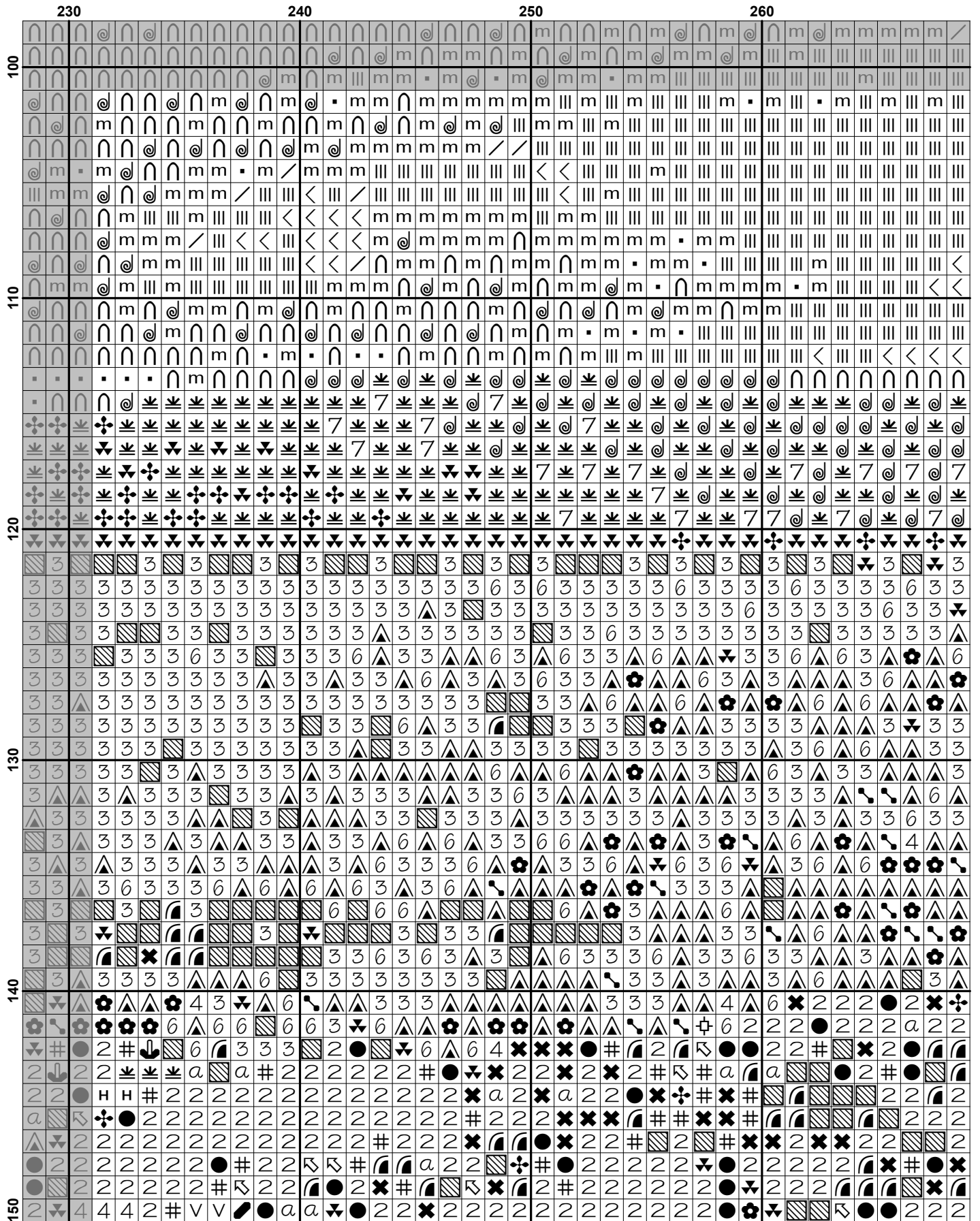


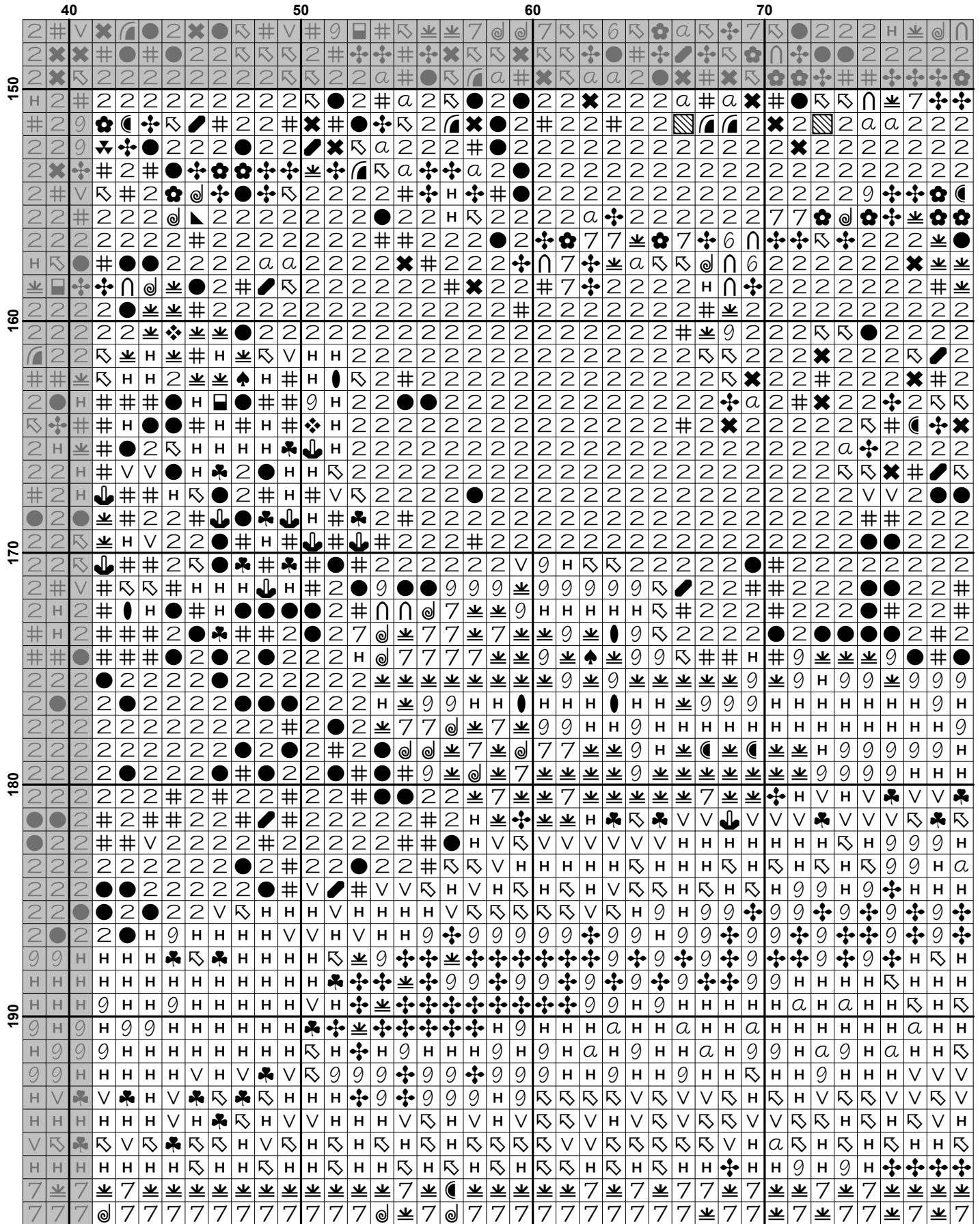


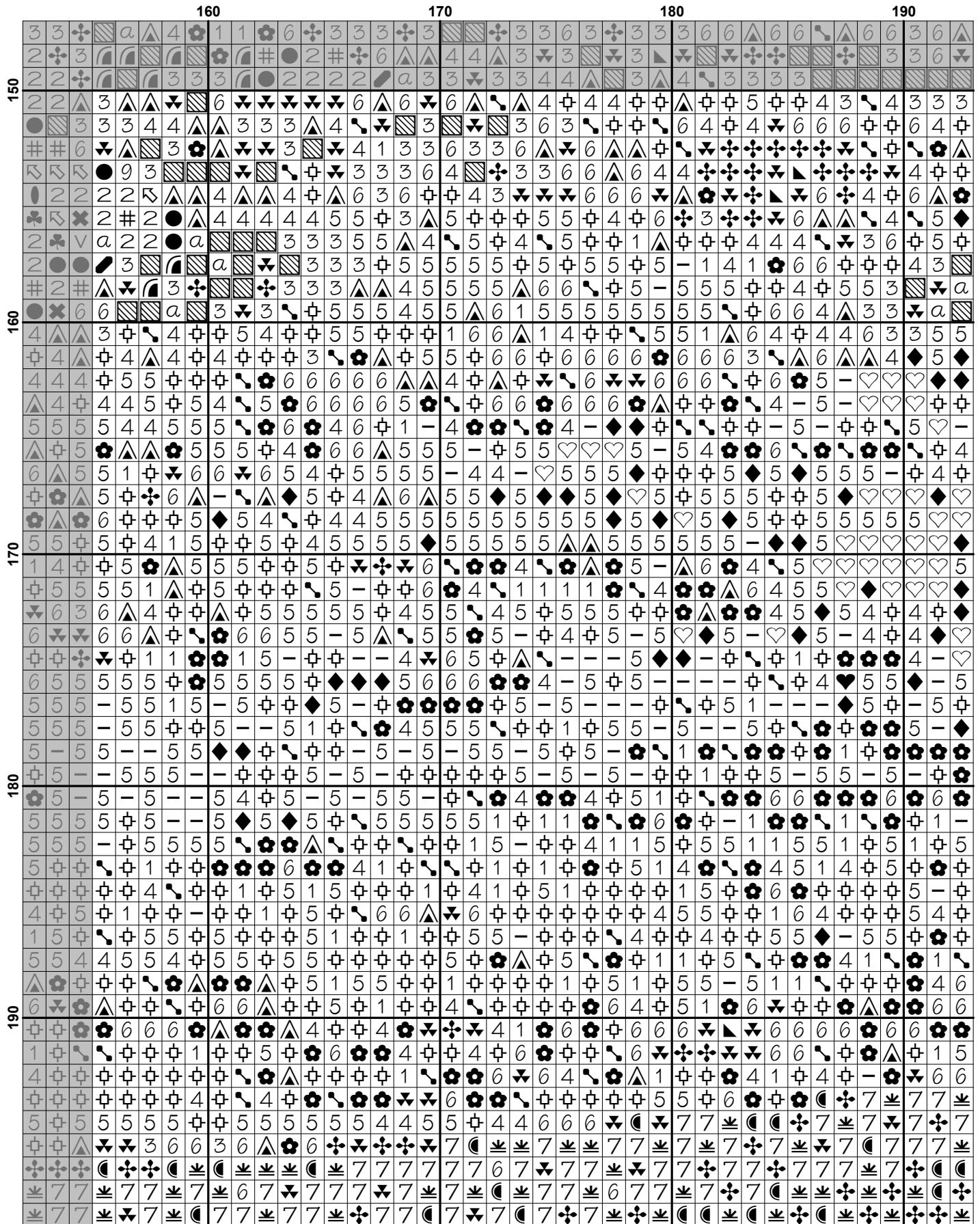


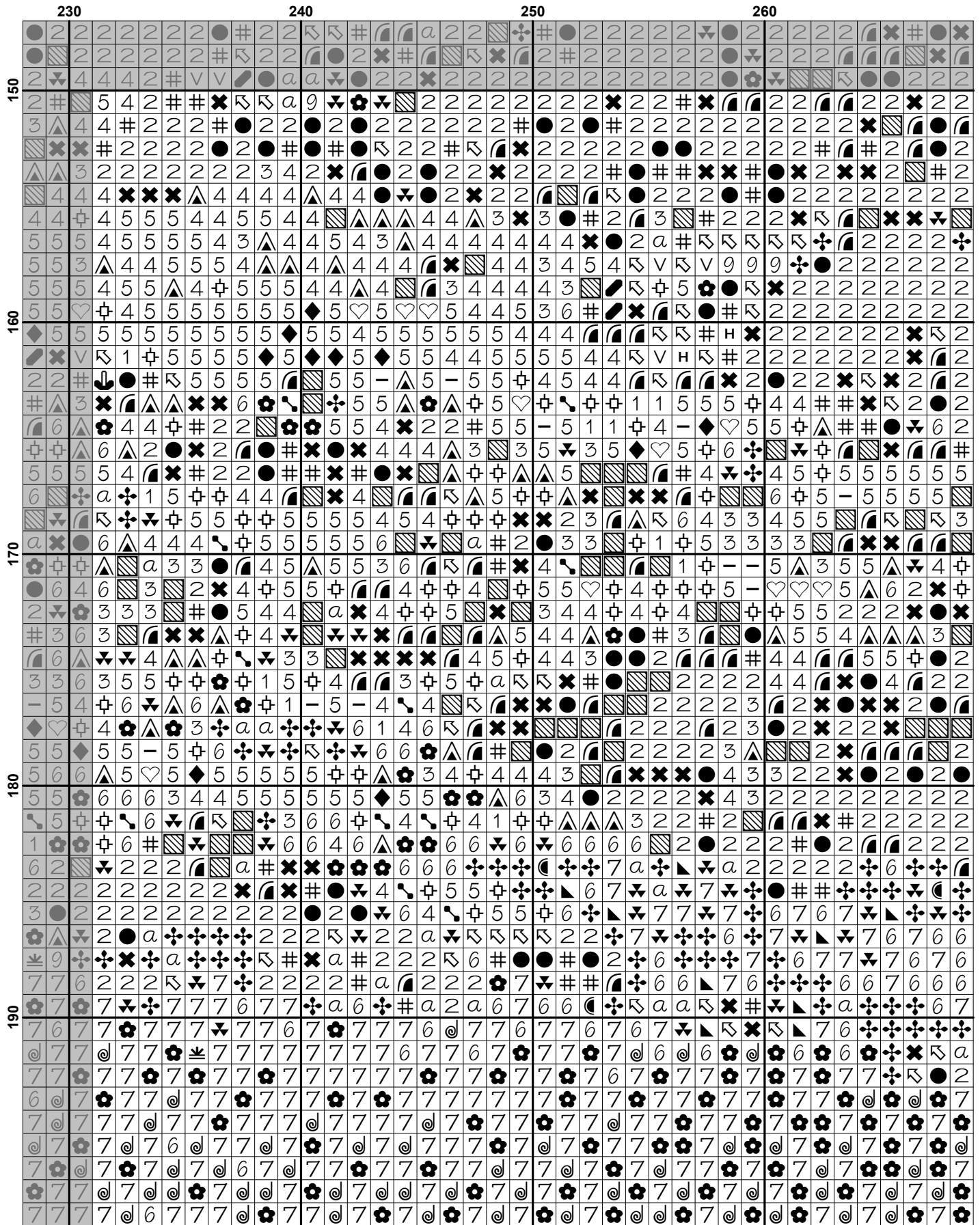


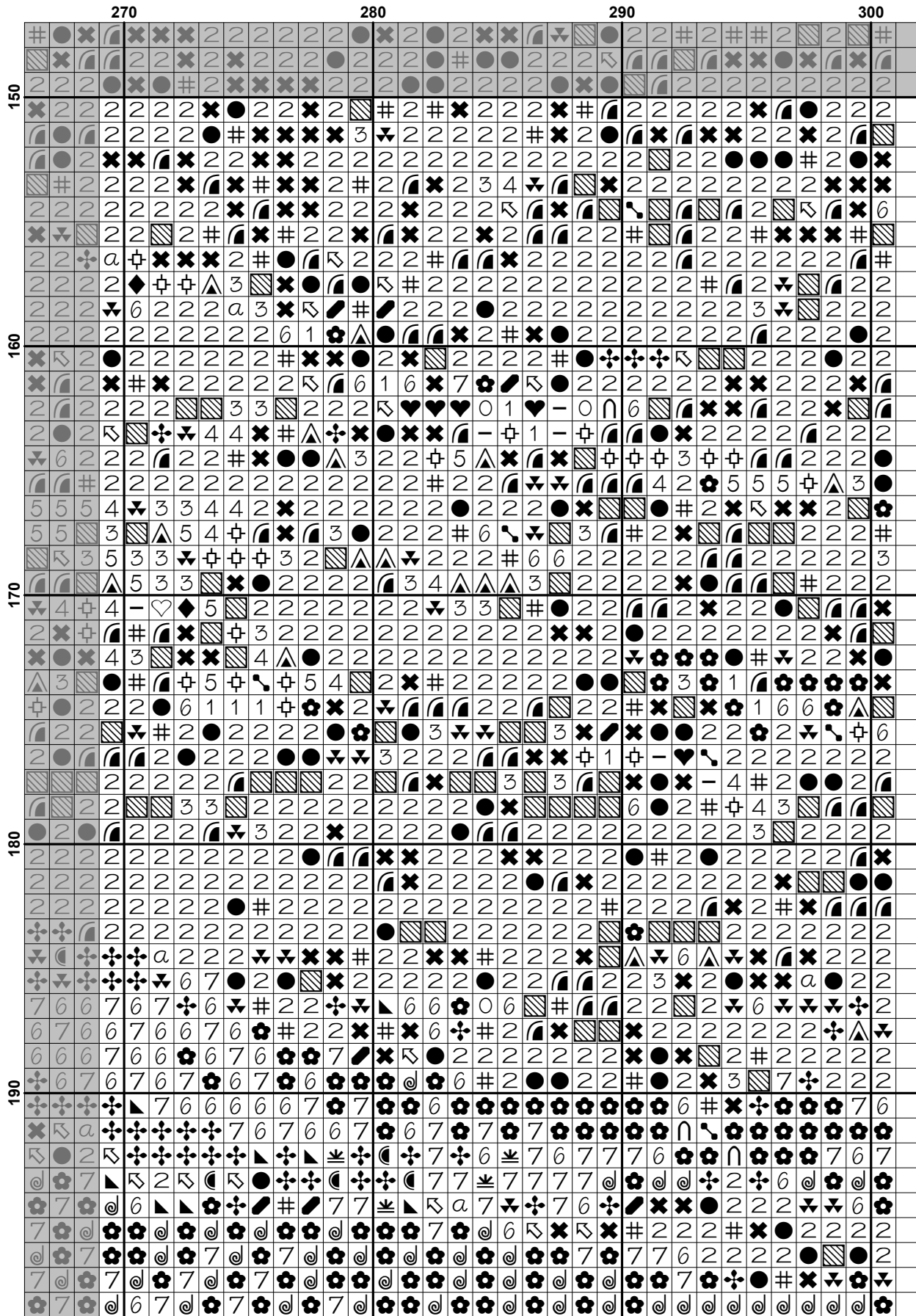


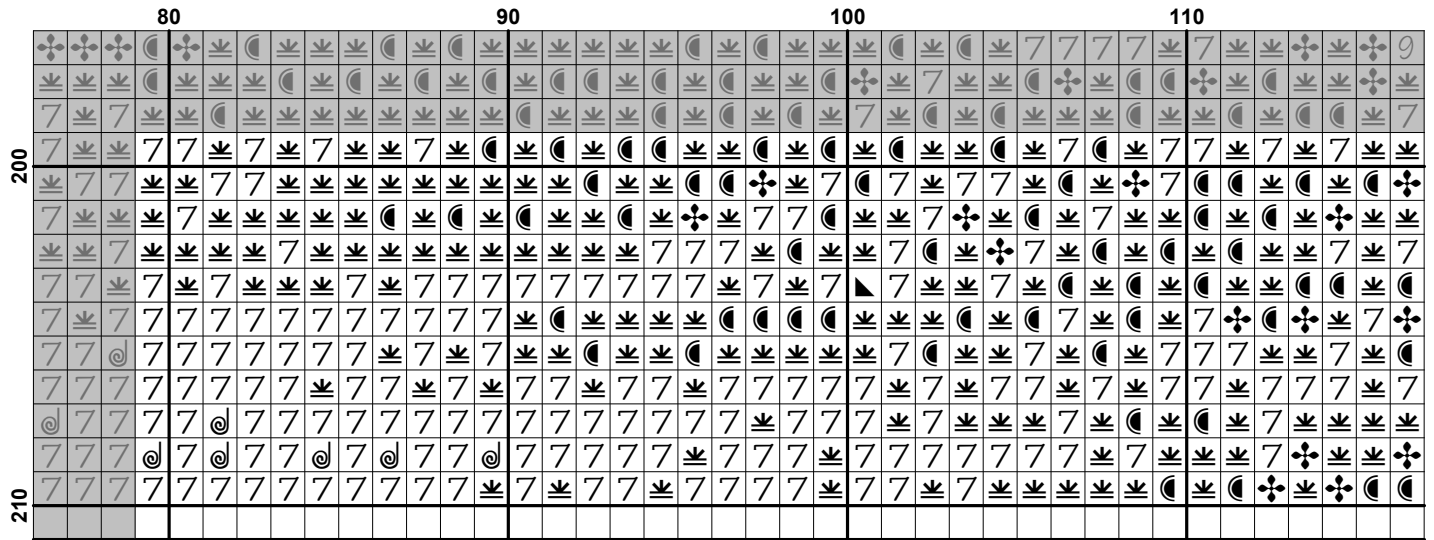


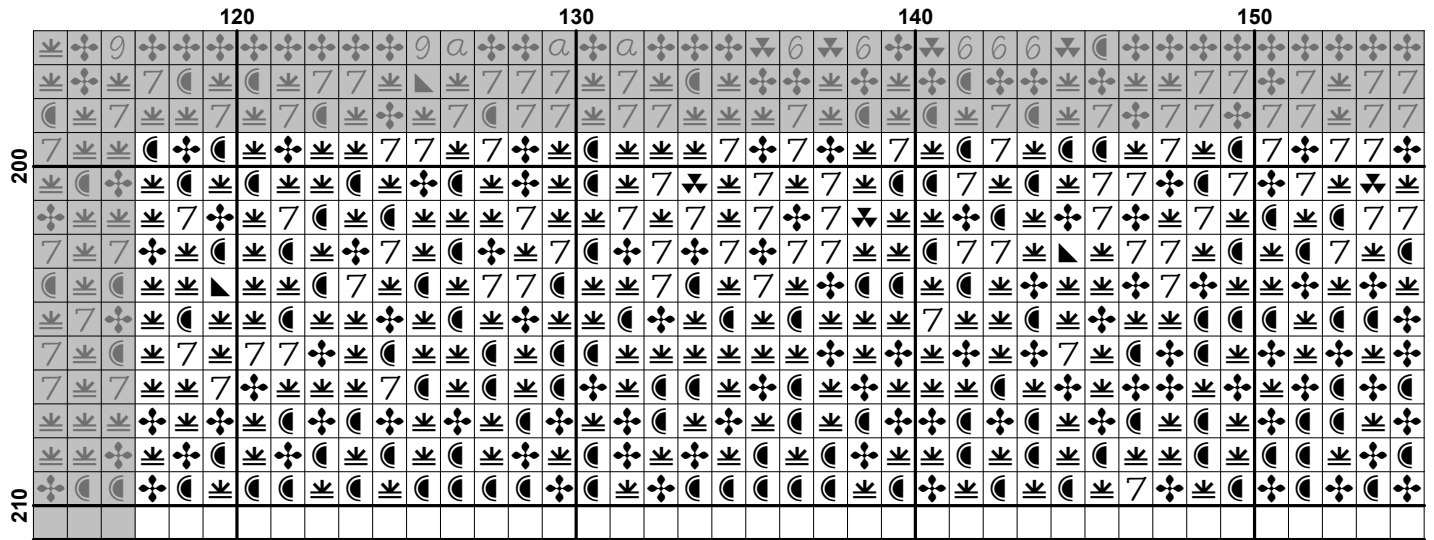


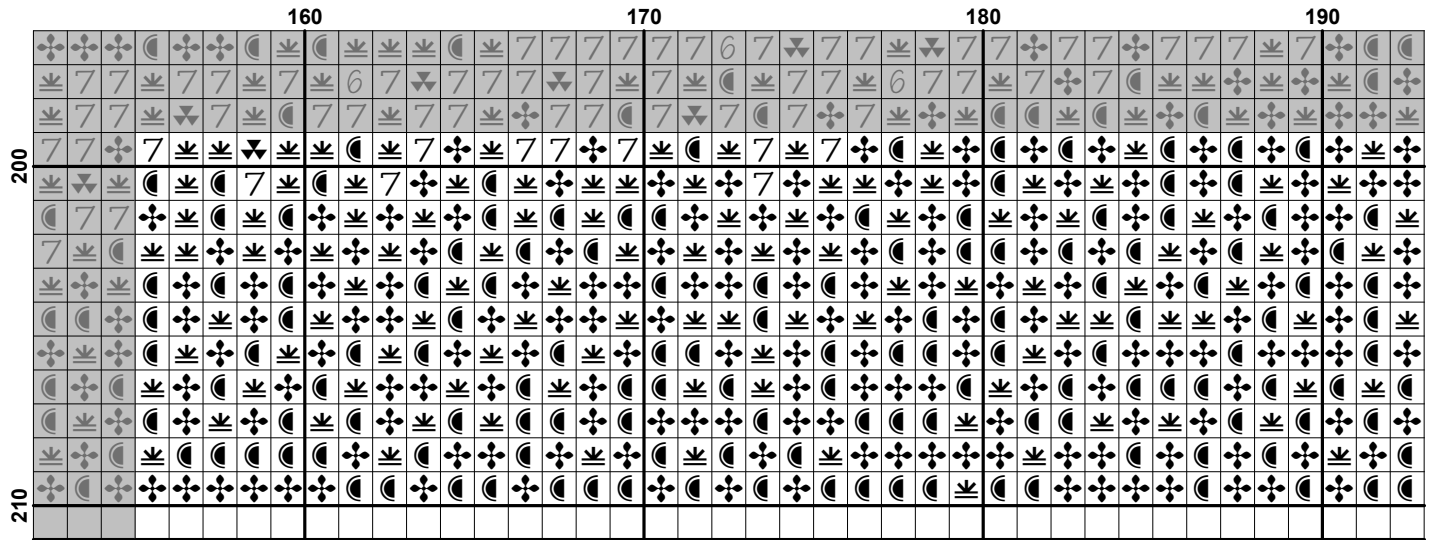


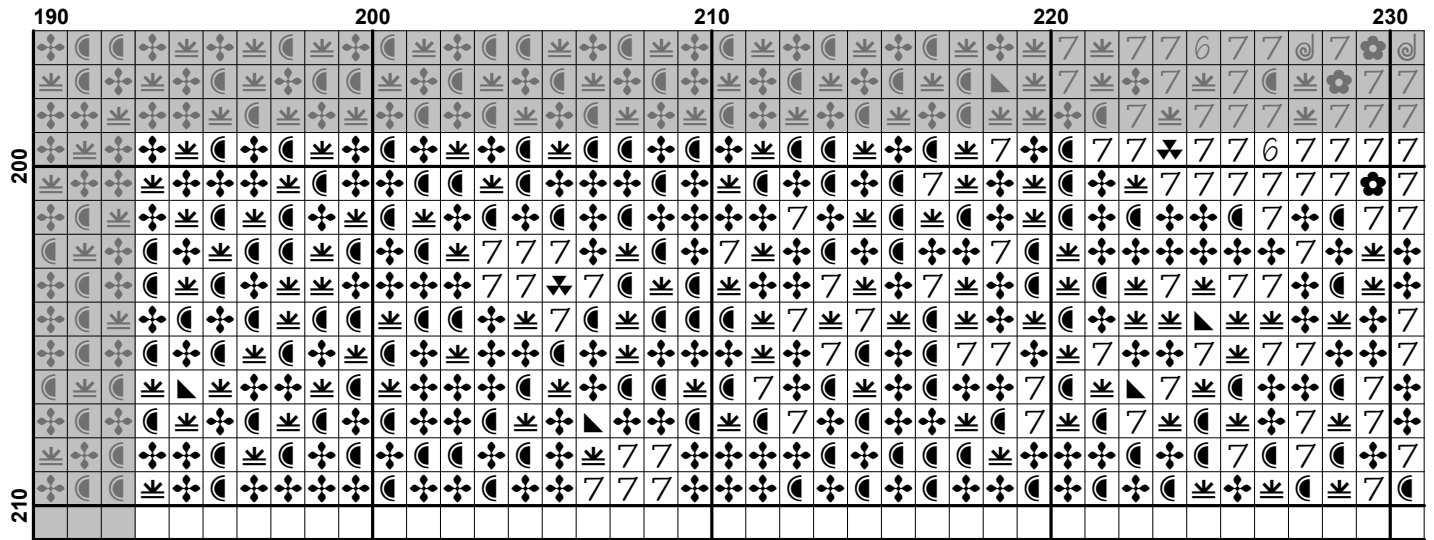


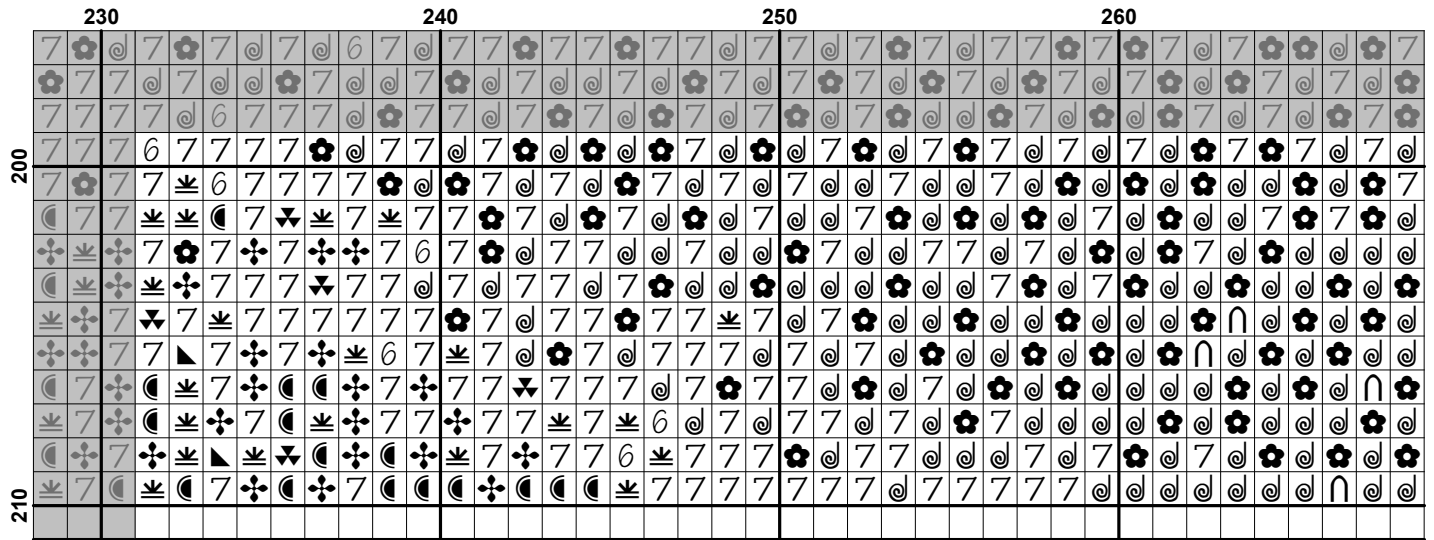

































Pattern Name: Kihei
Designed By: Photo by Christian Joudrey
Company: Artecy Cross Stitch
Copyright: Copyright Artecy Cross Stitch. All rights Reserved.
Fabric: Aida 14, White
 300w X 209h Stitches
Size(s): 14 Count, 21-3/8w X 14-7/8h in
 16 Count, 18-3/4w X 13h in
 18 Count, 16-5/8w X 11-1/2h in

Floss Used for Full Stitches:

Symbol	Strands	Type	Number	Color
	2	DMC	152	Shell Pink-MD LT
	2	DMC	166	Moss Green-MD LT
	2	DMC	169	Pewter-LT
	2	DMC	225	Shell Pink-UL VY LT
	2	DMC	300	Mahogany-VY DK
	2	DMC	310	Black
	2	DMC	317	Pewter Gray
	2	DMC	318	Steel Gray-LT
	2	DMC	372	Mustard-LT
	2	DMC	400	Mahogany-DK
	2	DMC	402	Mahogany-VY LT
	2	DMC	413	Pewter Gray-DK
	2	DMC	414	Steel Gray-DK
	2	DMC	415	Pearl Gray
	2	DMC	434	Brown-LT
	2	DMC	435	Brown-VY LT
	2	DMC	451	Shell Gray-DK
	2	DMC	452	Shell Gray-MD
	2	DMC	453	Shell Gray-LT
	2	DMC	632	Desert Sand-UL VY DK
	2	DMC	640	Beige Gray-VY DK
	2	DMC	647	Beaver Gray-MD
	2	DMC	730	Olive Green-VY DK
	2	DMC	732	Olive Green
	2	DMC	738	Tan-VY LT
	2	DMC	745	Yellow-LT Pale
	2	DMC	762	Pearl Gray-VY LT
	2	DMC	779	Cocoa-DK
	2	DMC	780	Topaz-UL VY DK
	2	DMC	782	Topaz-DK
	2	DMC	801	Coffee Brown-DK
	2	DMC	819	Baby Pink-LT
	2	DMC	840	Beige Brown-MD
	2	DMC	919	Red Copper
	2	DMC	920	Copper-MD
	2	DMC	921	Copper
	2	DMC	936	Avocado Green-VY DK
	2	DMC	938	Coffee Brown-UL DK
	2	DMC	950	Desert Sand-LT
	2	DMC	975	Golden Brown-DK
	2	DMC	976	Golden Brown-MD
	2	DMC	977	Golden Brown-LT
	2	DMC	3031	Mocha Brown-VY DK
	2	DMC	3041	Antique Violet-MD
	2	DMC	3042	Antique Violet-LT

Symbol	Strands	Type	Number	Color
 ∩	2	DMC	3064	Desert Sand
 ◆	2	DMC	3072	Beaver Gray-VY LT
 ■	2	DMC	3078	Golden Yellow-VY LT
 ●	2	DMC	3371	Black Brown
 ♥	2	DMC	3727	Antique Mauve-LT
 e	2	DMC	3770	Tawny-VY LT
 .	2	DMC	3771	Terra Cotta-UL VY LT
 ⚡	2	DMC	3772	Desert Sand-VY DK
 ❖	2	DMC	3776	Mahogany-LT
 \$	2	DMC	3779	Terra Cotta-UL VY LT
 a	2	DMC	3787	Brown Gray-DK
 ✕	2	DMC	3799	Pewter Gray-VY DK
 III	2	DMC	3825	Pumpkin-Pale
 ♠	2	DMC	3826	Golden Brown
 ✕	2	DMC	3852	Straw-VY DK
 <	2	DMC	3856	Mahogany-UL VY LT
 @	2	DMC	3859	Rosewood-LT
 ✚	2	DMC	3860	Cocoa
 ✚	2	DMC	3861	Cocoa-LT
 9	2	DMC	3862	Mocha Beige-DK
 7	2	DMC	3863	Mocha Beige-MD

Notes:

The middle of this pattern can be found on page 20 and is 151 stitches across and 106 stitches down.

Pattern layout using page numbers in top left.

```

1  2  3  4  5  6  7  8
9  10 11 12 13 14 15 16
17 18 19 20 21 22 23 24
25 26 27 28 29 30 31 32
33 34 35 36 37 38 39 40

```

Usage Summary**Strands Per Skein:** 6**Skein Length:** 313.0 in

Type	Number	Full	Half	Quarter	Petite	Back(in)	Str(in)	Spec(in)	French	Bead	Skein Est.
DMC	152	1237	0	0	0	0.0	0.0	0.0	0	0	1.000
DMC	166	64	0	0	0	0.0	0.0	0.0	0	0	1.000
DMC	169	2306	0	0	0	0.0	0.0	0.0	0	0	2.000
DMC	225	596	0	0	0	0.0	0.0	0.0	0	0	1.000
DMC	300	887	0	0	0	0.0	0.0	0.0	0	0	1.000
DMC	310	6019	0	0	0	0.0	0.0	0.0	0	0	4.000
DMC	317	1561	0	0	0	0.0	0.0	0.0	0	0	1.000
DMC	318	1332	0	0	0	0.0	0.0	0.0	0	0	1.000
DMC	372	64	0	0	0	0.0	0.0	0.0	0	0	1.000
DMC	400	359	0	0	0	0.0	0.0	0.0	0	0	1.000
DMC	402	391	0	0	0	0.0	0.0	0.0	0	0	1.000
DMC	413	531	0	0	0	0.0	0.0	0.0	0	0	1.000
DMC	414	1911	0	0	0	0.0	0.0	0.0	0	0	2.000
DMC	415	1489	0	0	0	0.0	0.0	0.0	0	0	1.000
DMC	434	83	0	0	0	0.0	0.0	0.0	0	0	1.000
DMC	435	88	0	0	0	0.0	0.0	0.0	0	0	1.000
DMC	451	3055	0	0	0	0.0	0.0	0.0	0	0	2.000
DMC	452	2659	0	0	0	0.0	0.0	0.0	0	0	2.000
DMC	453	1620	0	0	0	0.0	0.0	0.0	0	0	1.000
DMC	632	933	0	0	0	0.0	0.0	0.0	0	0	1.000
DMC	640	71	0	0	0	0.0	0.0	0.0	0	0	1.000
DMC	647	1042	0	0	0	0.0	0.0	0.0	0	0	1.000
DMC	730	193	0	0	0	0.0	0.0	0.0	0	0	1.000
DMC	732	234	0	0	0	0.0	0.0	0.0	0	0	1.000
DMC	738	591	0	0	0	0.0	0.0	0.0	0	0	1.000
DMC	745	58	0	0	0	0.0	0.0	0.0	0	0	1.000
DMC	762	1260	0	0	0	0.0	0.0	0.0	0	0	1.000
DMC	779	827	0	0	0	0.0	0.0	0.0	0	0	1.000
DMC	780	142	0	0	0	0.0	0.0	0.0	0	0	1.000
DMC	782	312	0	0	0	0.0	0.0	0.0	0	0	1.000
DMC	801	331	0	0	0	0.0	0.0	0.0	0	0	1.000
DMC	819	1719	0	0	0	0.0	0.0	0.0	0	0	1.000
DMC	840	626	0	0	0	0.0	0.0	0.0	0	0	1.000
DMC	919	35	0	0	0	0.0	0.0	0.0	0	0	1.000
DMC	920	37	0	0	0	0.0	0.0	0.0	0	0	1.000
DMC	921	45	0	0	0	0.0	0.0	0.0	0	0	1.000
DMC	936	63	0	0	0	0.0	0.0	0.0	0	0	1.000
DMC	938	1897	0	0	0	0.0	0.0	0.0	0	0	2.000
DMC	950	589	0	0	0	0.0	0.0	0.0	0	0	1.000
DMC	975	168	0	0	0	0.0	0.0	0.0	0	0	1.000
DMC	976	45	0	0	0	0.0	0.0	0.0	0	0	1.000
DMC	977	62	0	0	0	0.0	0.0	0.0	0	0	1.000
DMC	3031	210	0	0	0	0.0	0.0	0.0	0	0	1.000
DMC	3041	1205	0	0	0	0.0	0.0	0.0	0	0	1.000
DMC	3042	1636	0	0	0	0.0	0.0	0.0	0	0	1.000
DMC	3064	1671	0	0	0	0.0	0.0	0.0	0	0	1.000
DMC	3072	976	0	0	0	0.0	0.0	0.0	0	0	1.000
DMC	3078	70	0	0	0	0.0	0.0	0.0	0	0	1.000
DMC	3371	1759	0	0	0	0.0	0.0	0.0	0	0	1.000
DMC	3727	662	0	0	0	0.0	0.0	0.0	0	0	1.000
DMC	3770	334	0	0	0	0.0	0.0	0.0	0	0	1.000

Type	Number	Full	Half	Quarter	Petite	Back(in)	Str(in)	Spec(in)	French	Bead	Skein	Est.
DMC	3771	407	0	0	0	0.0	0.0	0.0	0	0	1.000	
DMC	3772	2226	0	0	0	0.0	0.0	0.0	0	0	2.000	
DMC	3776	120	0	0	0	0.0	0.0	0.0	0	0	1.000	
DMC	3779	241	0	0	0	0.0	0.0	0.0	0	0	1.000	
DMC	3787	466	0	0	0	0.0	0.0	0.0	0	0	1.000	
DMC	3799	489	0	0	0	0.0	0.0	0.0	0	0	1.000	
DMC	3825	480	0	0	0	0.0	0.0	0.0	0	0	1.000	
DMC	3826	84	0	0	0	0.0	0.0	0.0	0	0	1.000	
DMC	3852	54	0	0	0	0.0	0.0	0.0	0	0	1.000	
DMC	3856	186	0	0	0	0.0	0.0	0.0	0	0	1.000	
DMC	3859	2466	0	0	0	0.0	0.0	0.0	0	0	2.000	
DMC	3860	2477	0	0	0	0.0	0.0	0.0	0	0	2.000	
DMC	3861	4361	0	0	0	0.0	0.0	0.0	0	0	3.000	
DMC	3862	493	0	0	0	0.0	0.0	0.0	0	0	1.000	
DMC	3863	2095	0	0	0	0.0	0.0	0.0	0	0	2.000	