

Artecy

CROSS STITCH

Fractal Blooms



* Original image© Gerd Altmann - Pixabay
Cross Stitch Design by Tereena Clarke.

Completed Size = 300w x 200h Stitches

14 Count, 21.5w x 14.5h inches (55cm x 37cm)

16 Count, 19w x 12.5h inches (48cm x 32cm)

18 Count, 17w x 11.5h inches (43cm x 29cm)

Uses 70 DMC cotton colours. Only full cross stitches are used in this pattern.

Pattern Instructions

* This pattern can be worked on any fabric type, colour or count you prefer. To work out the size of the finished article, take the number of stitches wide and high and divide it by the count of your fabric (e.g. 14,16,18 count aida etc) to get the size in inches. Times it by 2.54 to get centimetres. We have the sizes in inches shown on the previous page. Also leave at least a few inches of fabric around each side of the design to assist in framing. The higher the fabric count the smaller the completed project will be.

* To put the pattern together look in the top and bottom corners. The page numbers in brackets show which page number it joins up to. Page 1 always starts at the top left hand side of the pattern. Our pages also have a shaded grey section. This indicates a 3 row overlap from adjoining pages to assist with reading the pattern. PLEASE DO NOT RESTITCH THIS AREA.

* You should begin at the centre of the pattern. To find the centre of the pattern it is just a matter of laying the pattern out and locating the arrows at the top and left hand side of the patterns, they are determined by dividing the stitch numbers wide and high in half. Where the two points meet in the middle, that is the centre.

* If you need more assistance to find the middle of your pattern or the page layout, please see the notes section on the colour symbol chart. The easiest way to stitch this pattern, as it has multiple pages, is to stitch one page at a time.

* We suggest using two strands of floss for each stitch and one strand for backstitching if the pattern calls for it.

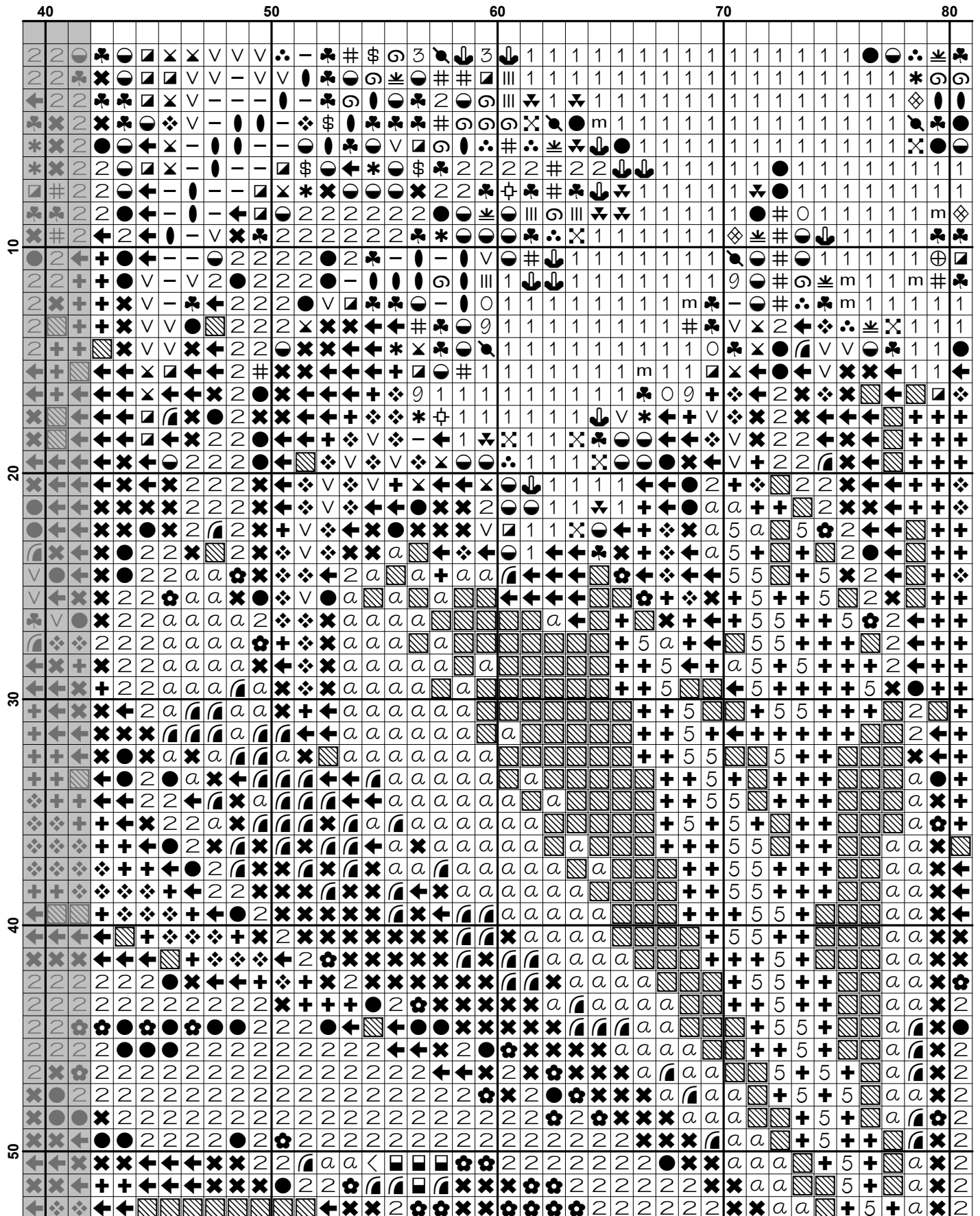
We hope you enjoy stitching our pattern.

Thanks and Best Wishes
Tereena Clarke

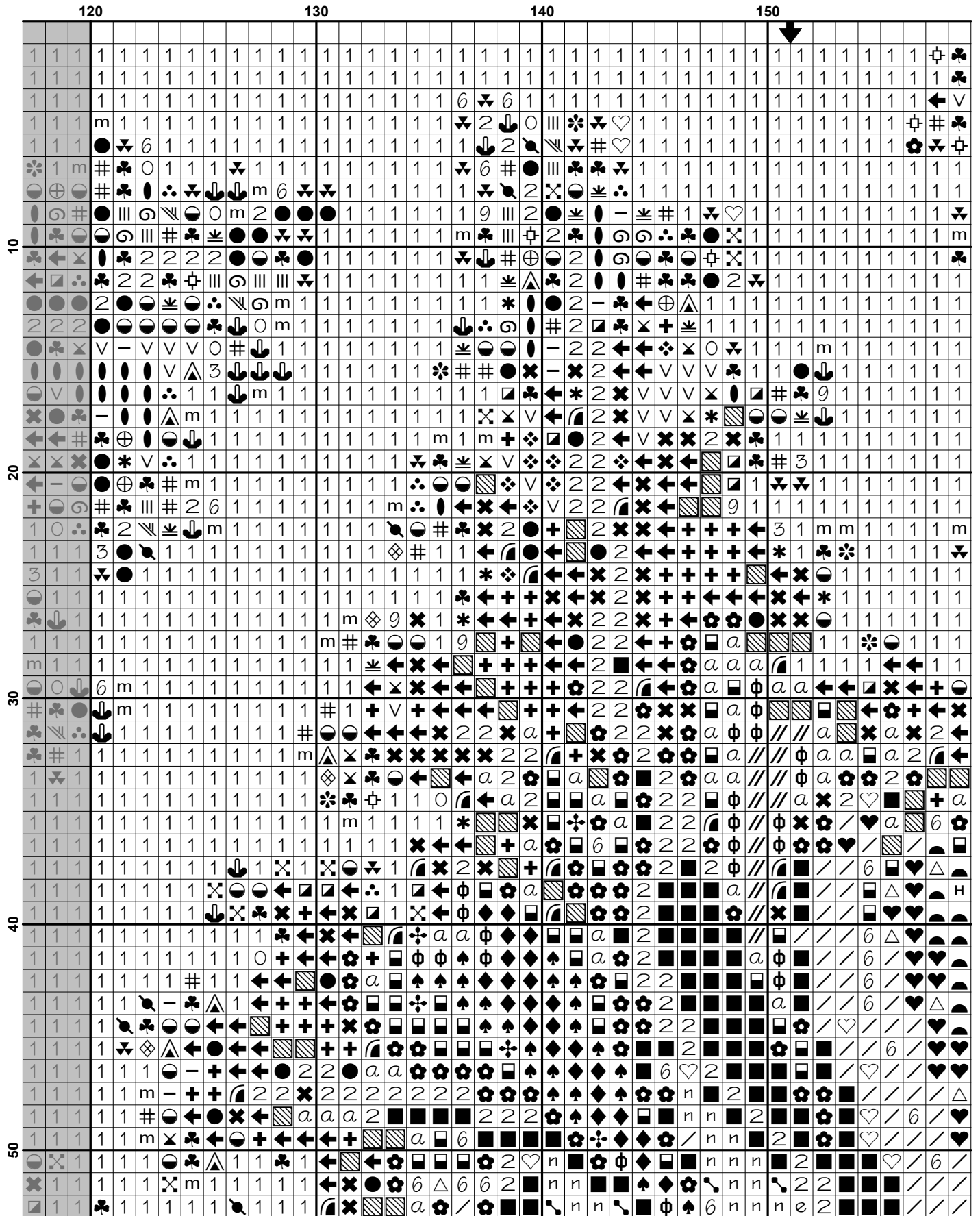
Artecy Cross Stitch
Po Box 3474
Tuggerah, NSW 2259
Australia

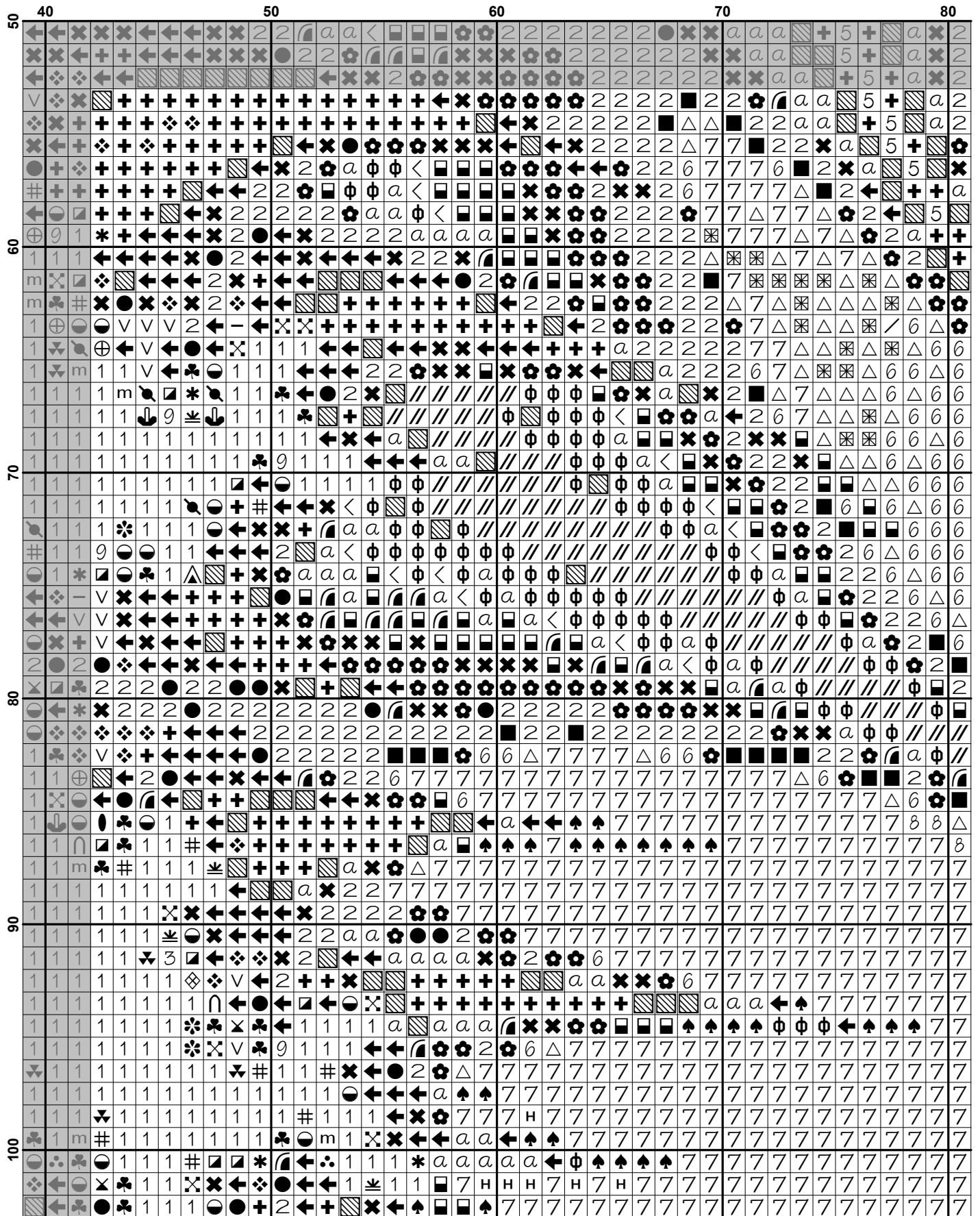
Websites: www.artecy.com and www.artecyshop.com
Email: artecy@artecy.com or stitch@artecyshop.com

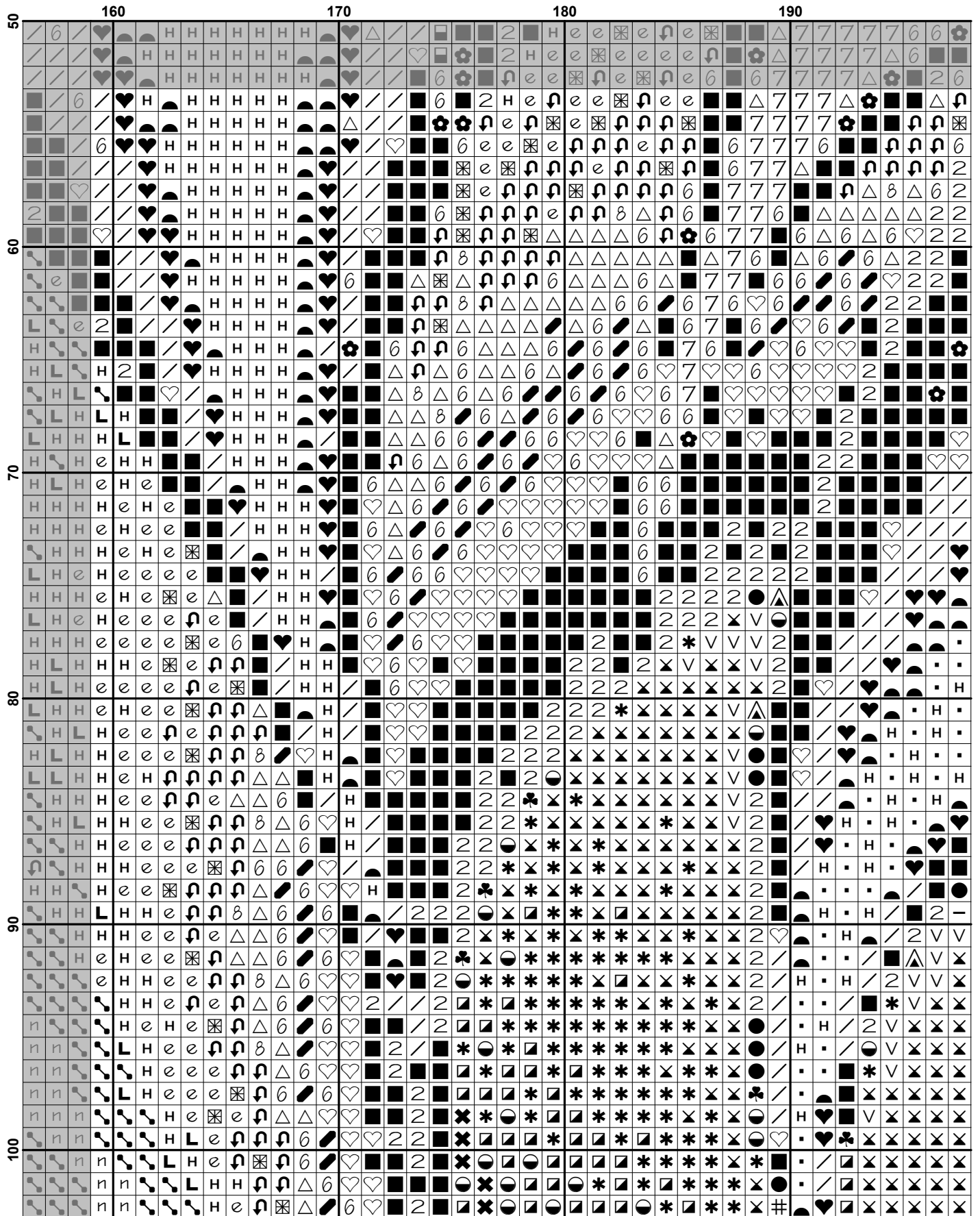
*Patterns are strictly for personal use only. It is against our copyright to make kits for sale from our designs or to sell, copy or redistribute this pattern in any form. You may not upload our patterns to any internet forums or groups or any other website. You may make 1 copy of this pattern for a working copy for your own personal use if needed.

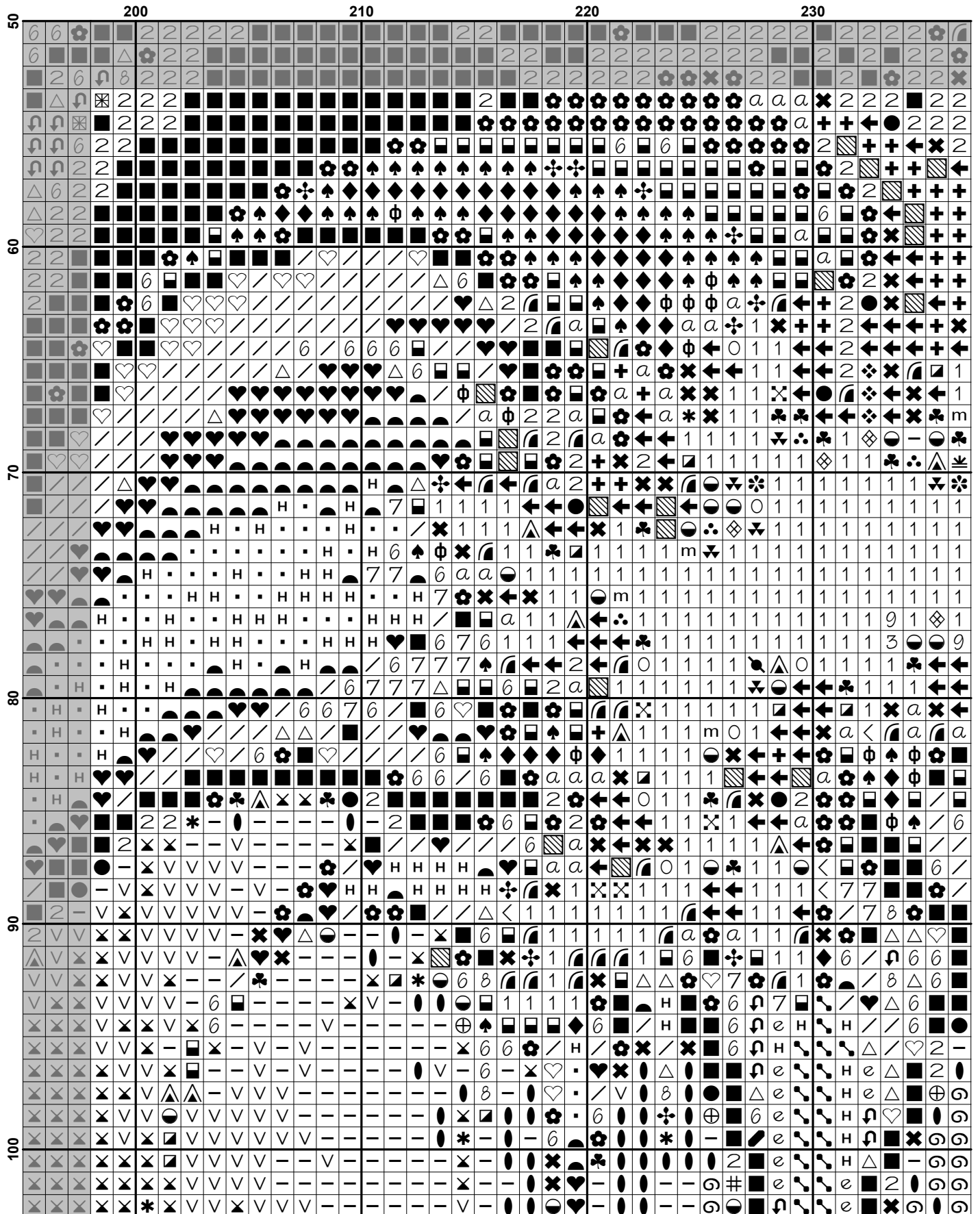


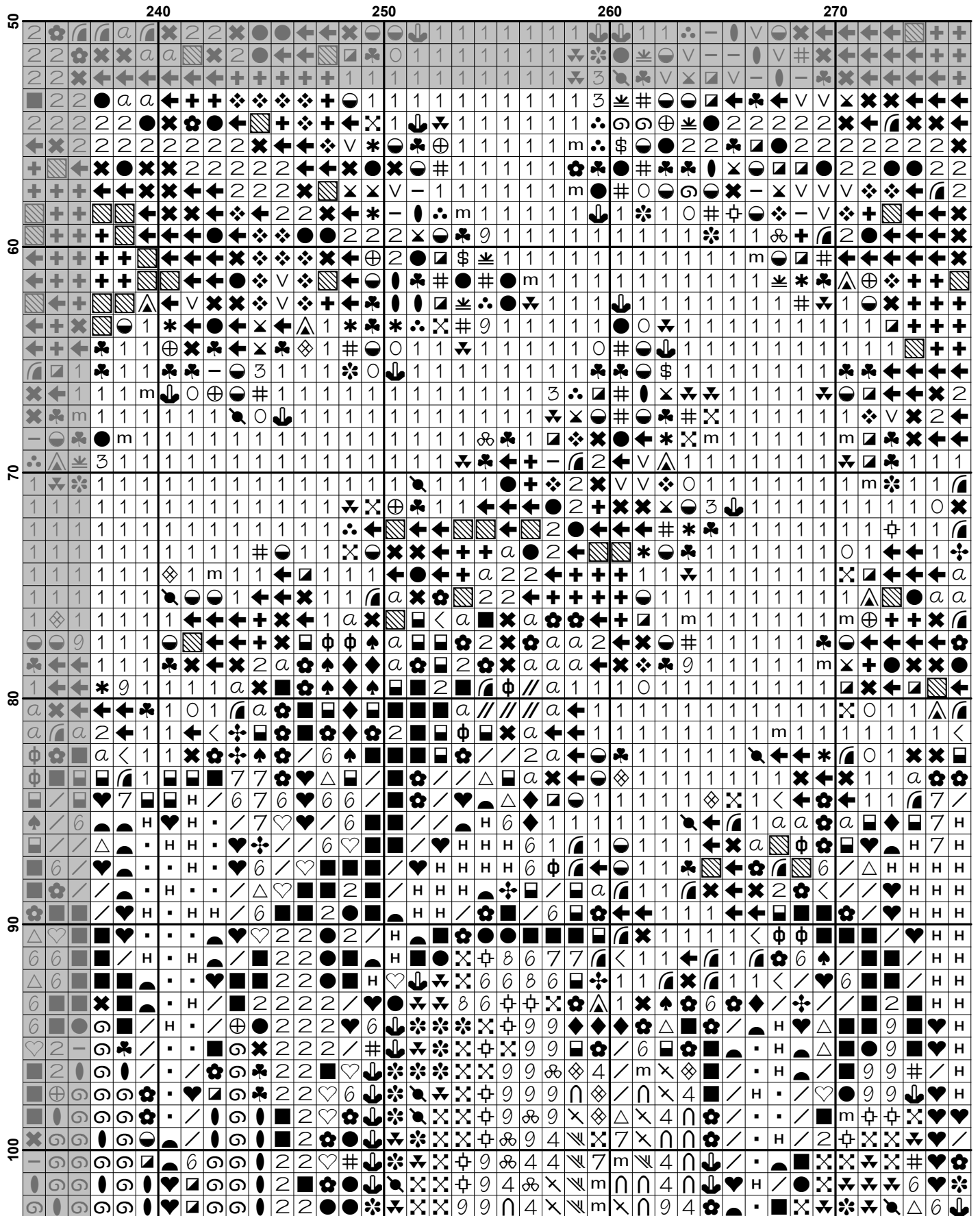
	80	90	100	110	120
10	⋮	⋮	⋮	⋮	⋮
11	⋮	⋮	⋮	⋮	⋮
12	⋮	⋮	⋮	⋮	⋮
13	⋮	⋮	⋮	⋮	⋮
14	⋮	⋮	⋮	⋮	⋮
15	⋮	⋮	⋮	⋮	⋮
16	⋮	⋮	⋮	⋮	⋮
17	⋮	⋮	⋮	⋮	⋮
18	⋮	⋮	⋮	⋮	⋮
19	⋮	⋮	⋮	⋮	⋮
20	⋮	⋮	⋮	⋮	⋮
21	⋮	⋮	⋮	⋮	⋮
22	⋮	⋮	⋮	⋮	⋮
23	⋮	⋮	⋮	⋮	⋮
24	⋮	⋮	⋮	⋮	⋮
25	⋮	⋮	⋮	⋮	⋮
26	⋮	⋮	⋮	⋮	⋮
27	⋮	⋮	⋮	⋮	⋮
28	⋮	⋮	⋮	⋮	⋮
29	⋮	⋮	⋮	⋮	⋮
30	⋮	⋮	⋮	⋮	⋮
31	⋮	⋮	⋮	⋮	⋮
32	⋮	⋮	⋮	⋮	⋮
33	⋮	⋮	⋮	⋮	⋮
34	⋮	⋮	⋮	⋮	⋮
35	⋮	⋮	⋮	⋮	⋮
36	⋮	⋮	⋮	⋮	⋮
37	⋮	⋮	⋮	⋮	⋮
38	⋮	⋮	⋮	⋮	⋮
39	⋮	⋮	⋮	⋮	⋮
40	⋮	⋮	⋮	⋮	⋮
41	⋮	⋮	⋮	⋮	⋮
42	⋮	⋮	⋮	⋮	⋮
43	⋮	⋮	⋮	⋮	⋮
44	⋮	⋮	⋮	⋮	⋮
45	⋮	⋮	⋮	⋮	⋮
46	⋮	⋮	⋮	⋮	⋮
47	⋮	⋮	⋮	⋮	⋮
48	⋮	⋮	⋮	⋮	⋮
49	⋮	⋮	⋮	⋮	⋮
50	⋮	⋮	⋮	⋮	⋮
51	⋮	⋮	⋮	⋮	⋮
52	⋮	⋮	⋮	⋮	⋮
53	⋮	⋮	⋮	⋮	⋮
54	⋮	⋮	⋮	⋮	⋮
55	⋮	⋮	⋮	⋮	⋮
56	⋮	⋮	⋮	⋮	⋮
57	⋮	⋮	⋮	⋮	⋮
58	⋮	⋮	⋮	⋮	⋮
59	⋮	⋮	⋮	⋮	⋮
60	⋮	⋮	⋮	⋮	⋮
61	⋮	⋮	⋮	⋮	⋮
62	⋮	⋮	⋮	⋮	⋮
63	⋮	⋮	⋮	⋮	⋮
64	⋮	⋮	⋮	⋮	⋮
65	⋮	⋮	⋮	⋮	⋮
66	⋮	⋮	⋮	⋮	⋮
67	⋮	⋮	⋮	⋮	⋮
68	⋮	⋮	⋮	⋮	⋮
69	⋮	⋮	⋮	⋮	⋮
70	⋮	⋮	⋮	⋮	⋮
71	⋮	⋮	⋮	⋮	⋮
72	⋮	⋮	⋮	⋮	⋮
73	⋮	⋮	⋮	⋮	⋮
74	⋮	⋮	⋮	⋮	⋮
75	⋮	⋮	⋮	⋮	⋮
76	⋮	⋮	⋮	⋮	⋮
77	⋮	⋮	⋮	⋮	⋮
78	⋮	⋮	⋮	⋮	⋮
79	⋮	⋮	⋮	⋮	⋮
80	⋮	⋮	⋮	⋮	⋮
81	⋮	⋮	⋮	⋮	⋮
82	⋮	⋮	⋮	⋮	⋮
83	⋮	⋮	⋮	⋮	⋮
84	⋮	⋮	⋮	⋮	⋮
85	⋮	⋮	⋮	⋮	⋮
86	⋮	⋮	⋮	⋮	⋮
87	⋮	⋮	⋮	⋮	⋮
88	⋮	⋮	⋮	⋮	⋮
89	⋮	⋮	⋮	⋮	⋮
90	⋮	⋮	⋮	⋮	⋮
91	⋮	⋮	⋮	⋮	⋮
92	⋮	⋮	⋮	⋮	⋮
93	⋮	⋮	⋮	⋮	⋮
94	⋮	⋮	⋮	⋮	⋮
95	⋮	⋮	⋮	⋮	⋮
96	⋮	⋮	⋮	⋮	⋮
97	⋮	⋮	⋮	⋮	⋮
98	⋮	⋮	⋮	⋮	⋮
99	⋮	⋮	⋮	⋮	⋮
100	⋮	⋮	⋮	⋮	⋮
101	⋮	⋮	⋮	⋮	⋮
102	⋮	⋮	⋮	⋮	⋮
103	⋮	⋮	⋮	⋮	⋮
104	⋮	⋮	⋮	⋮	⋮
105	⋮	⋮	⋮	⋮	⋮
106	⋮	⋮	⋮	⋮	⋮
107	⋮	⋮	⋮	⋮	⋮
108	⋮	⋮	⋮	⋮	⋮
109	⋮	⋮	⋮	⋮	⋮
110	⋮	⋮	⋮	⋮	⋮
111	⋮	⋮	⋮	⋮	⋮
112	⋮	⋮	⋮	⋮	⋮
113	⋮	⋮	⋮	⋮	⋮
114	⋮	⋮	⋮	⋮	⋮
115	⋮	⋮	⋮	⋮	⋮
116	⋮	⋮	⋮	⋮	⋮
117	⋮	⋮	⋮	⋮	⋮
118	⋮	⋮	⋮	⋮	⋮
119	⋮	⋮	⋮	⋮	⋮
120	⋮	⋮	⋮	⋮	⋮

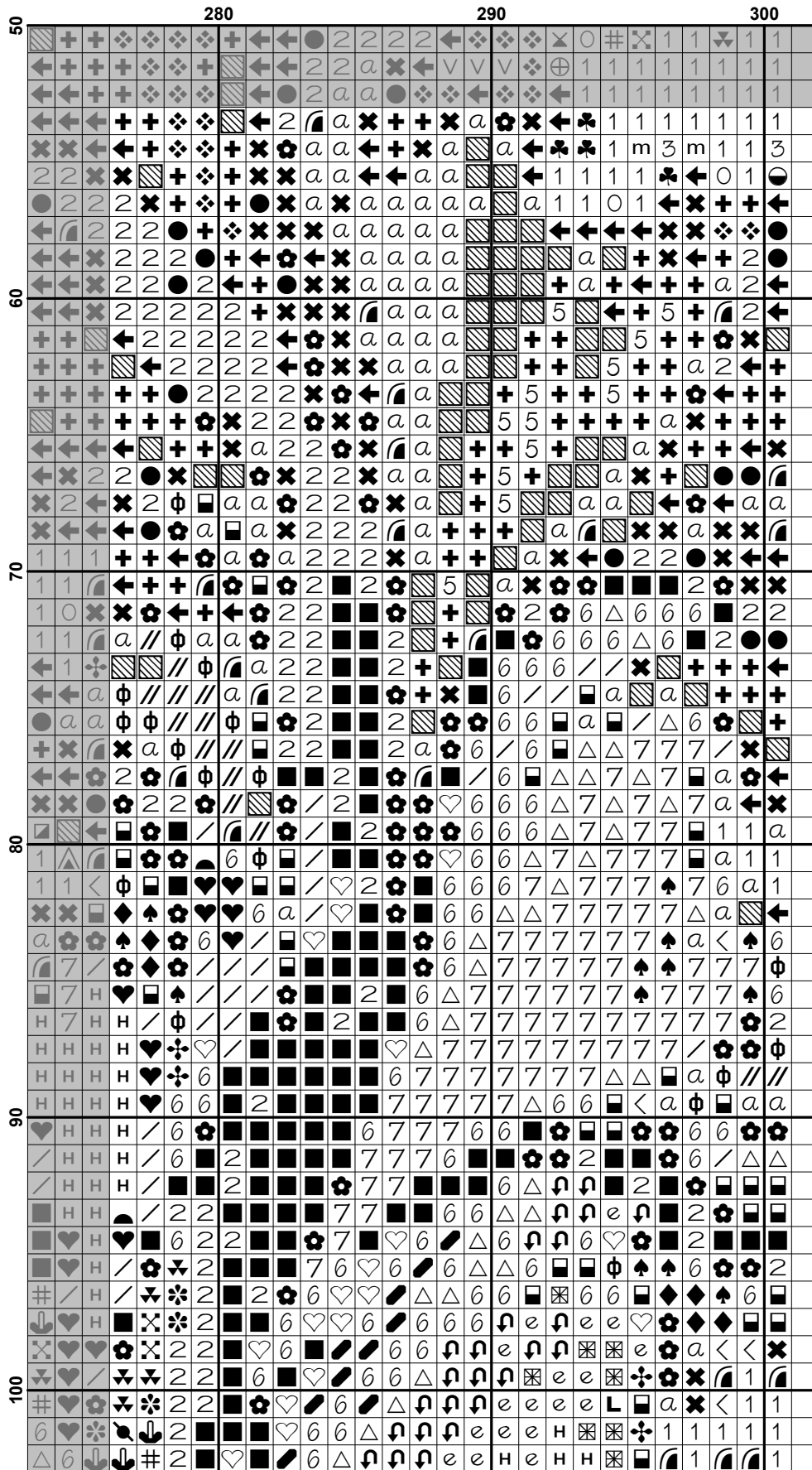


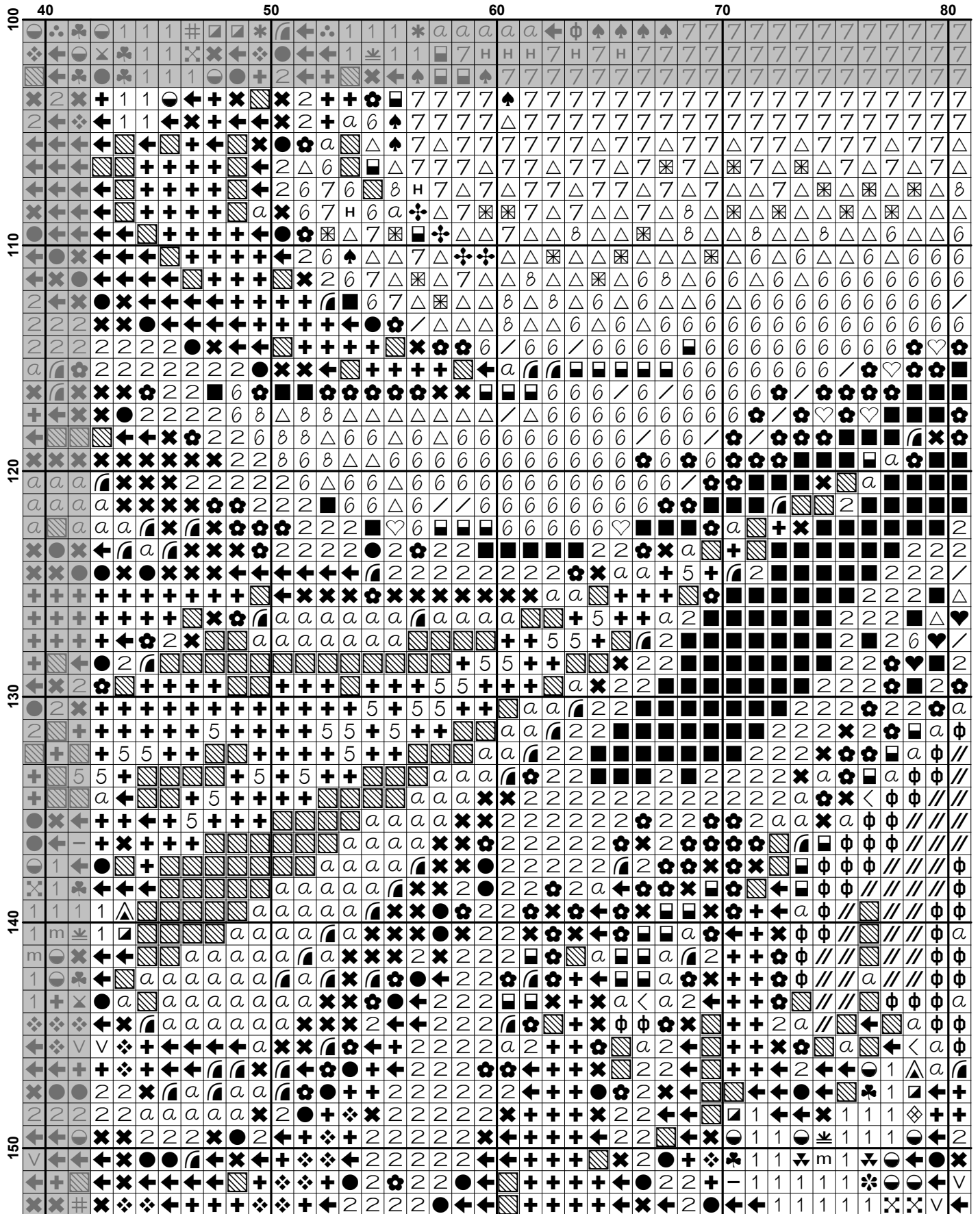


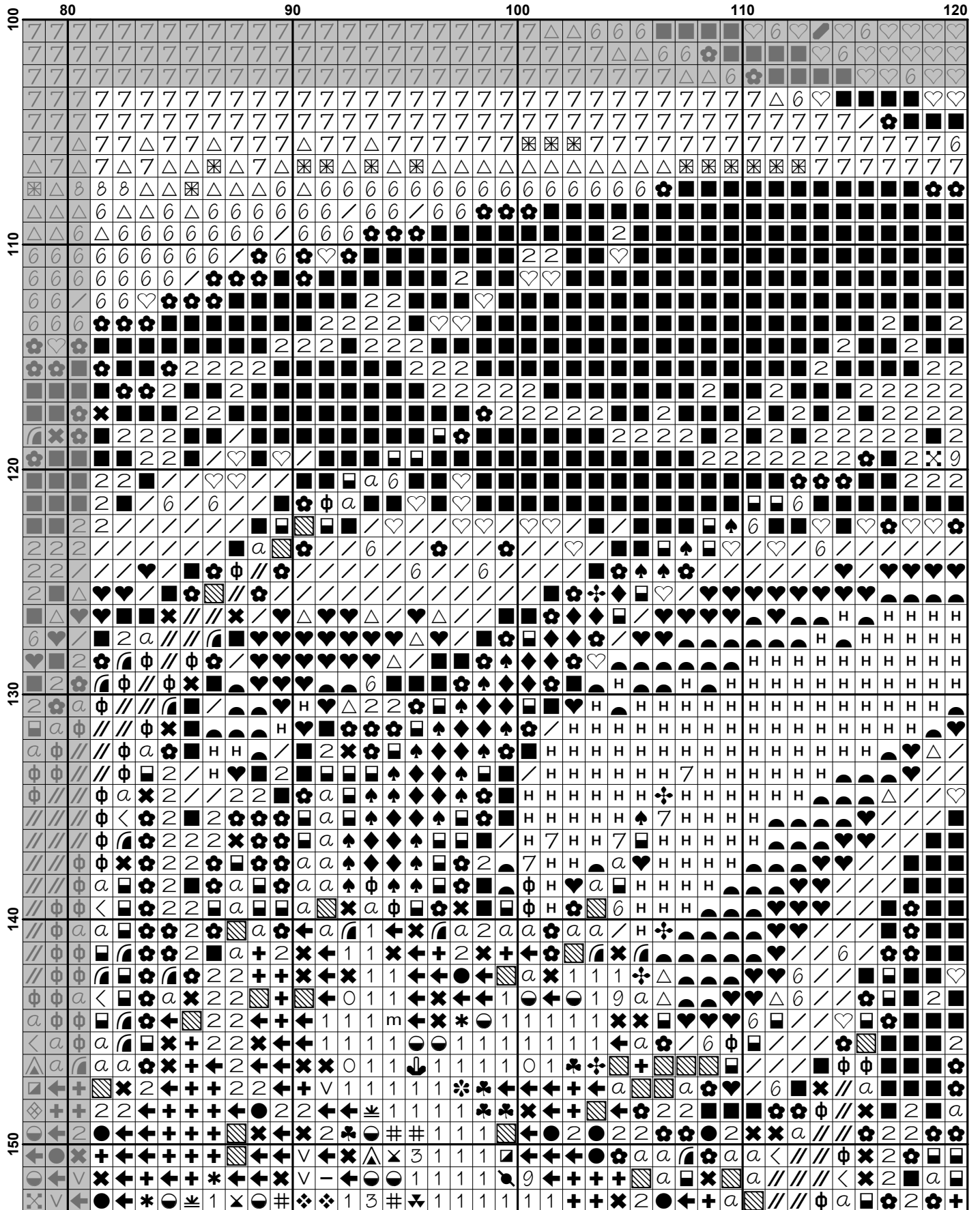


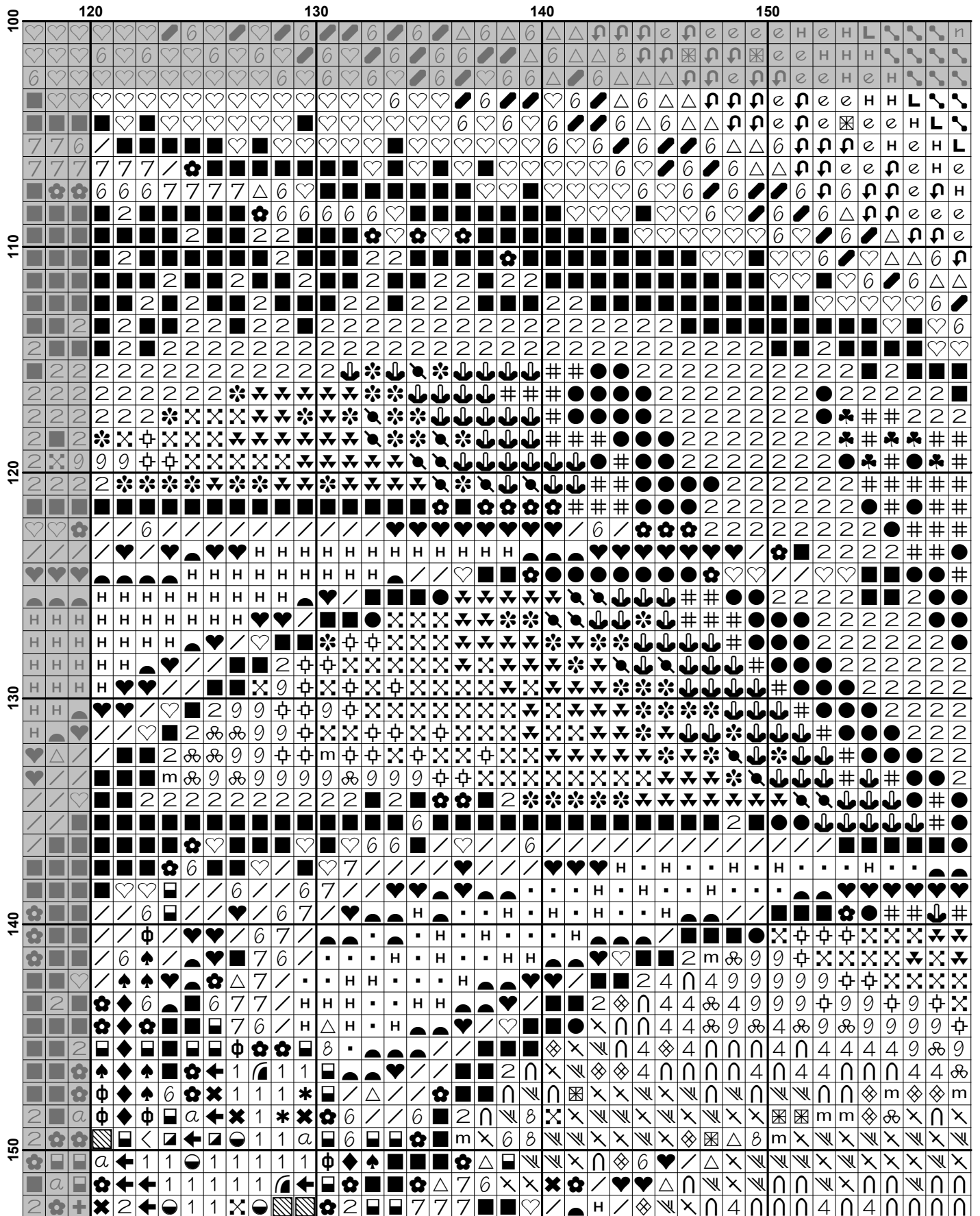


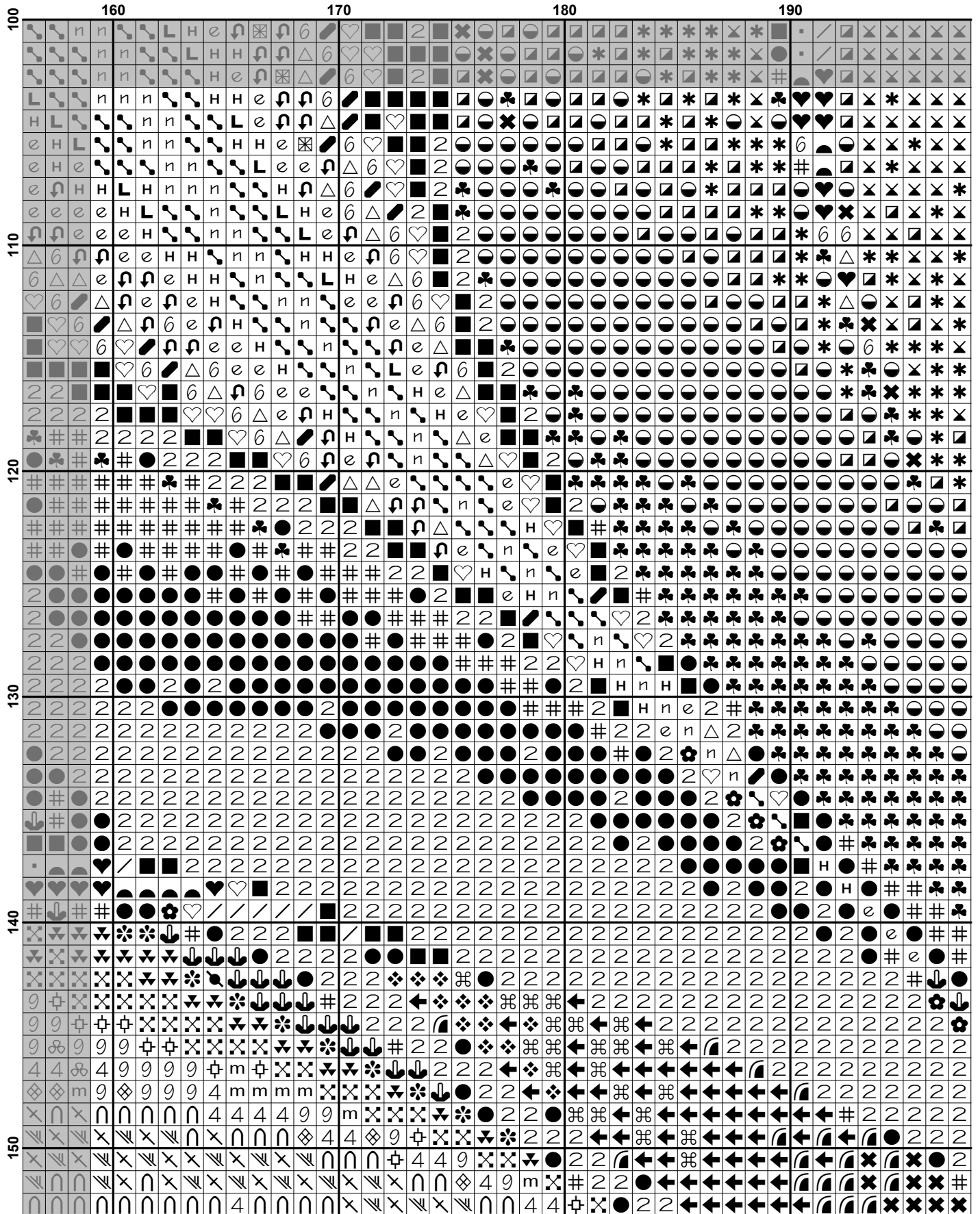


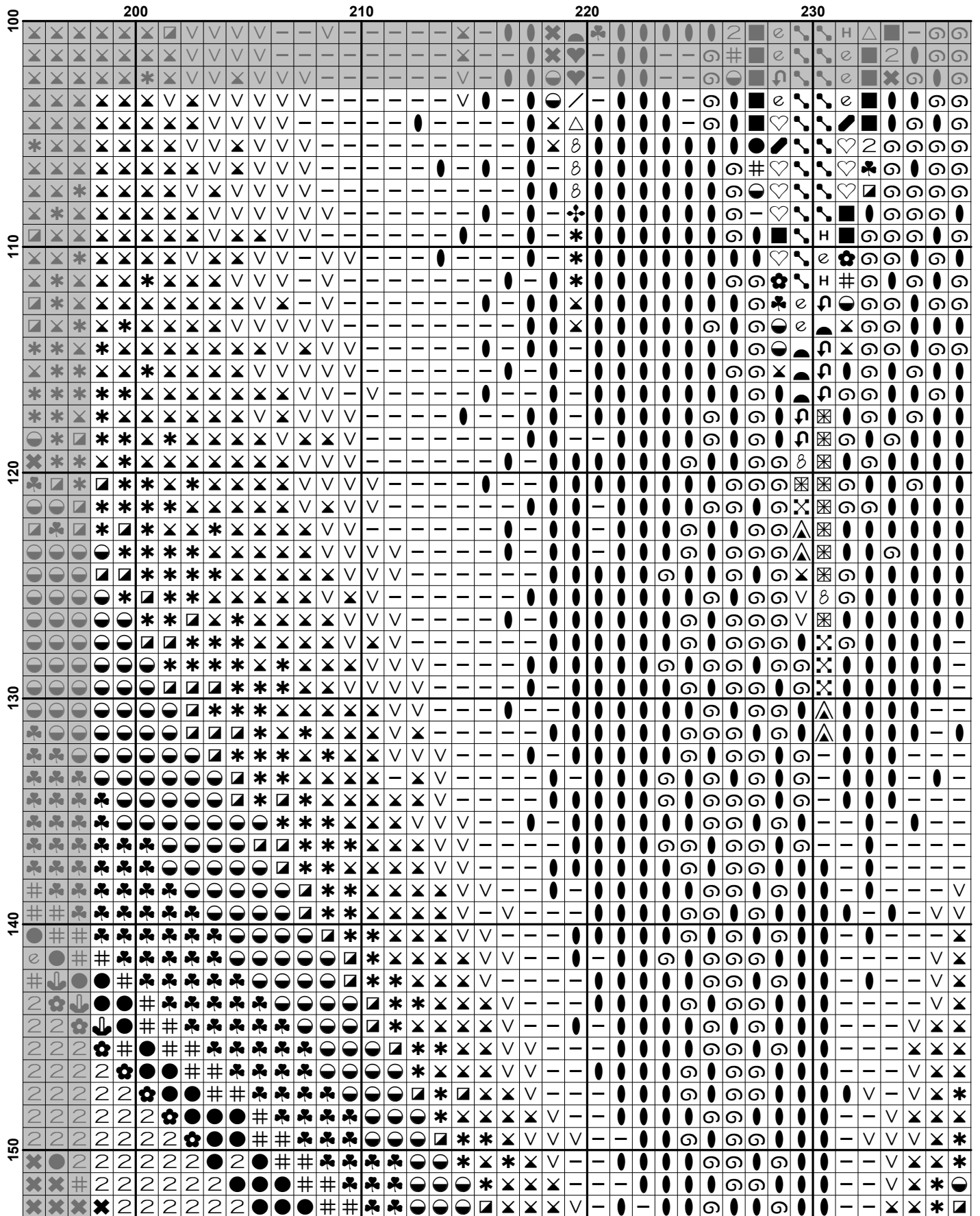


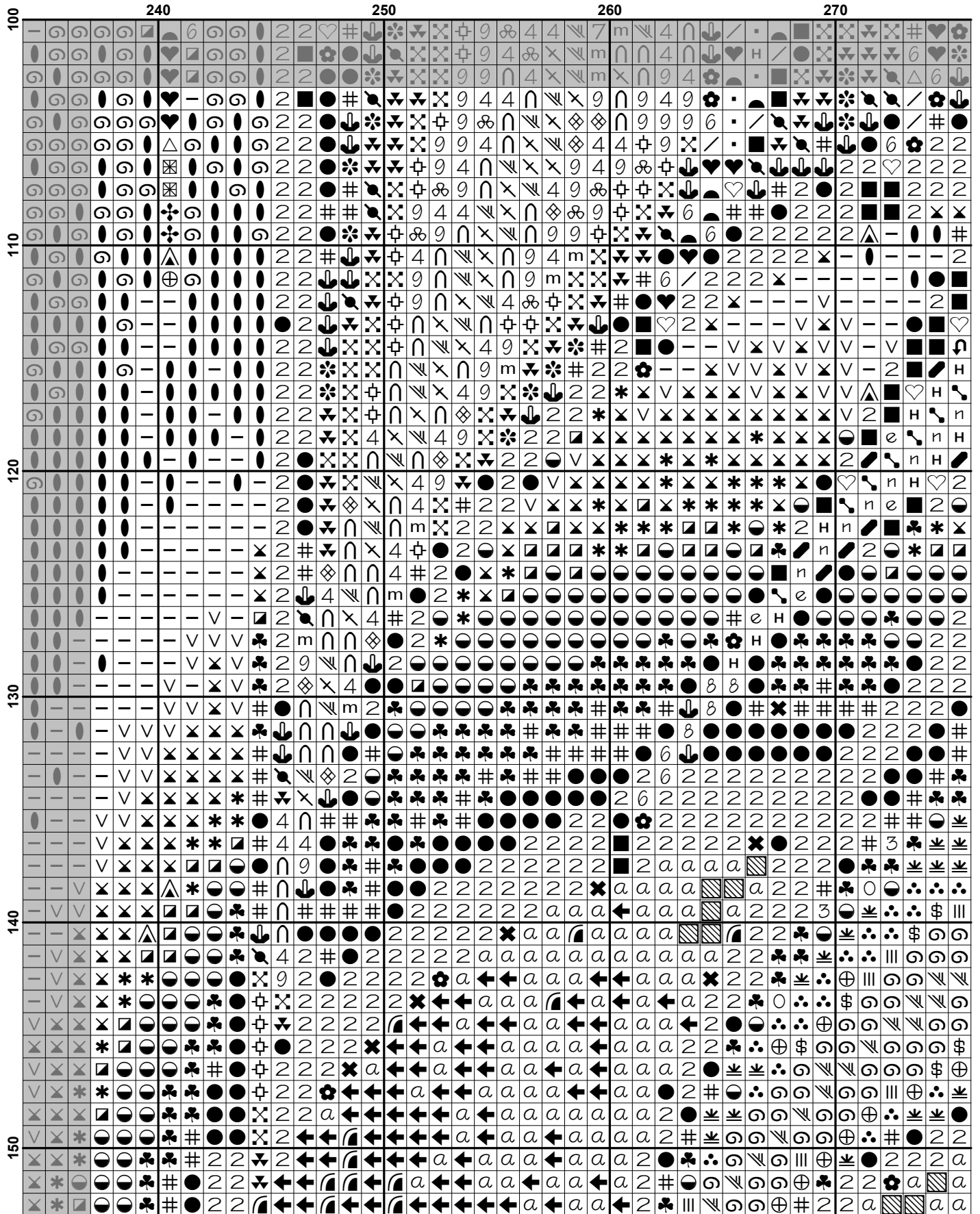


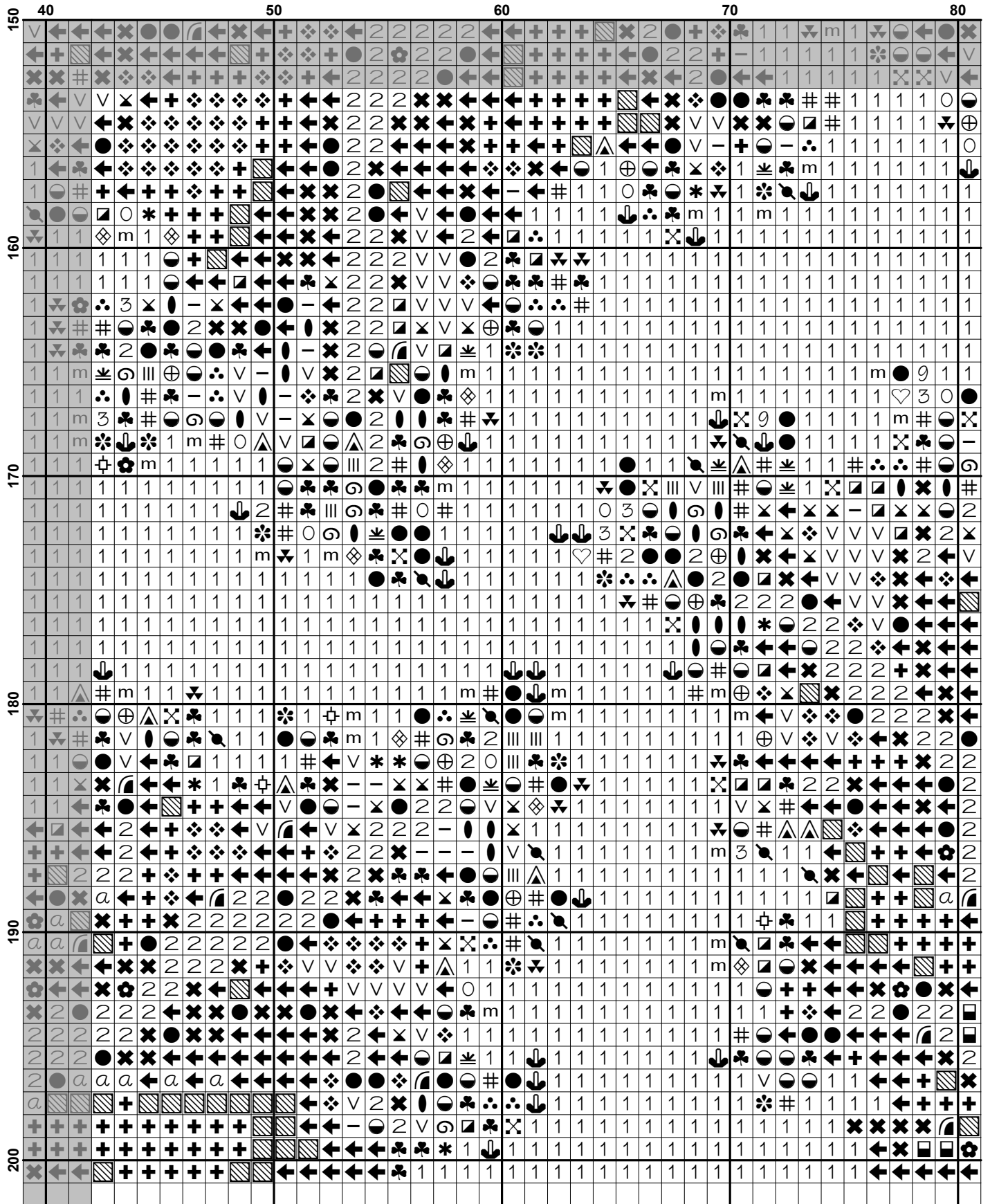


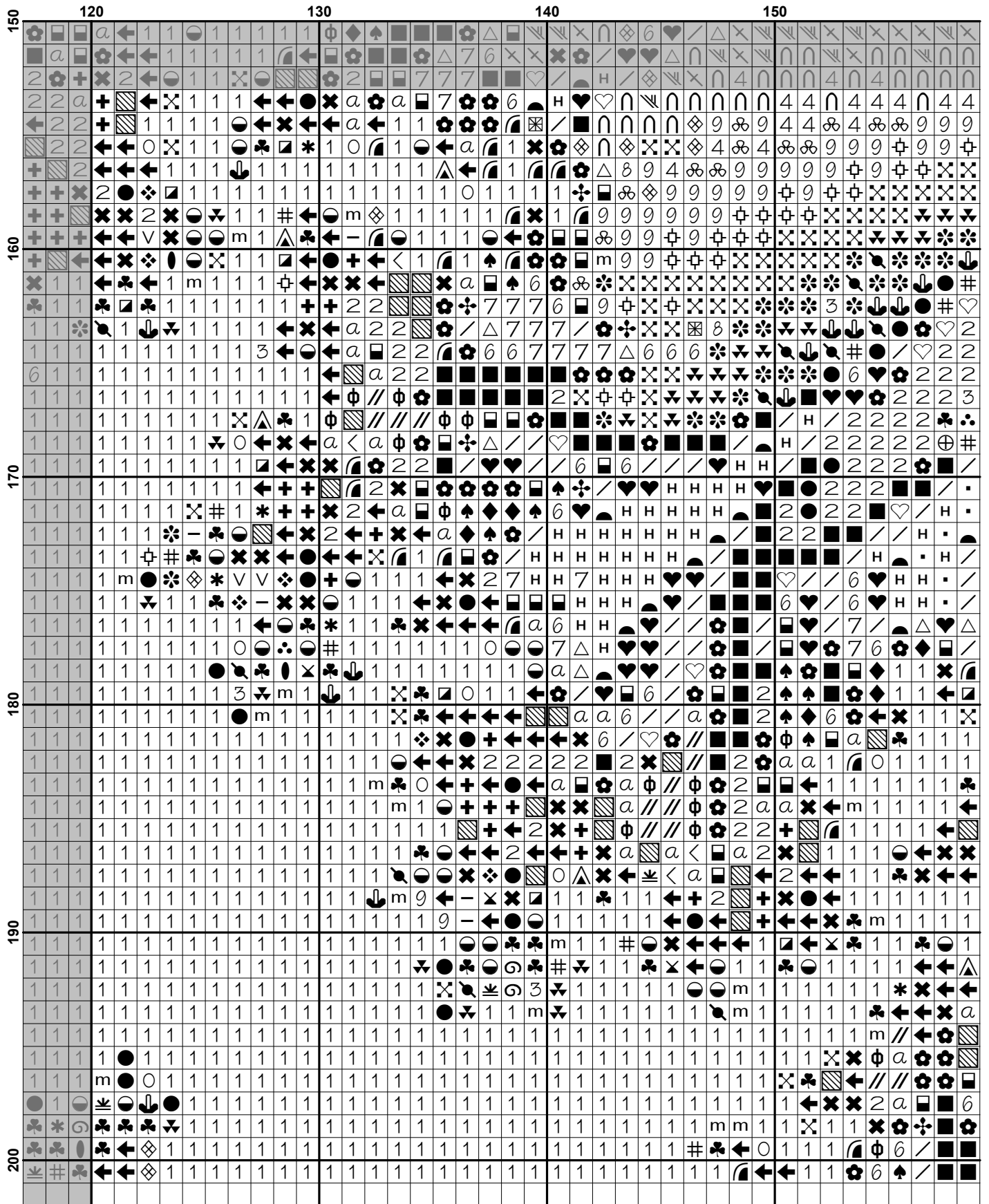


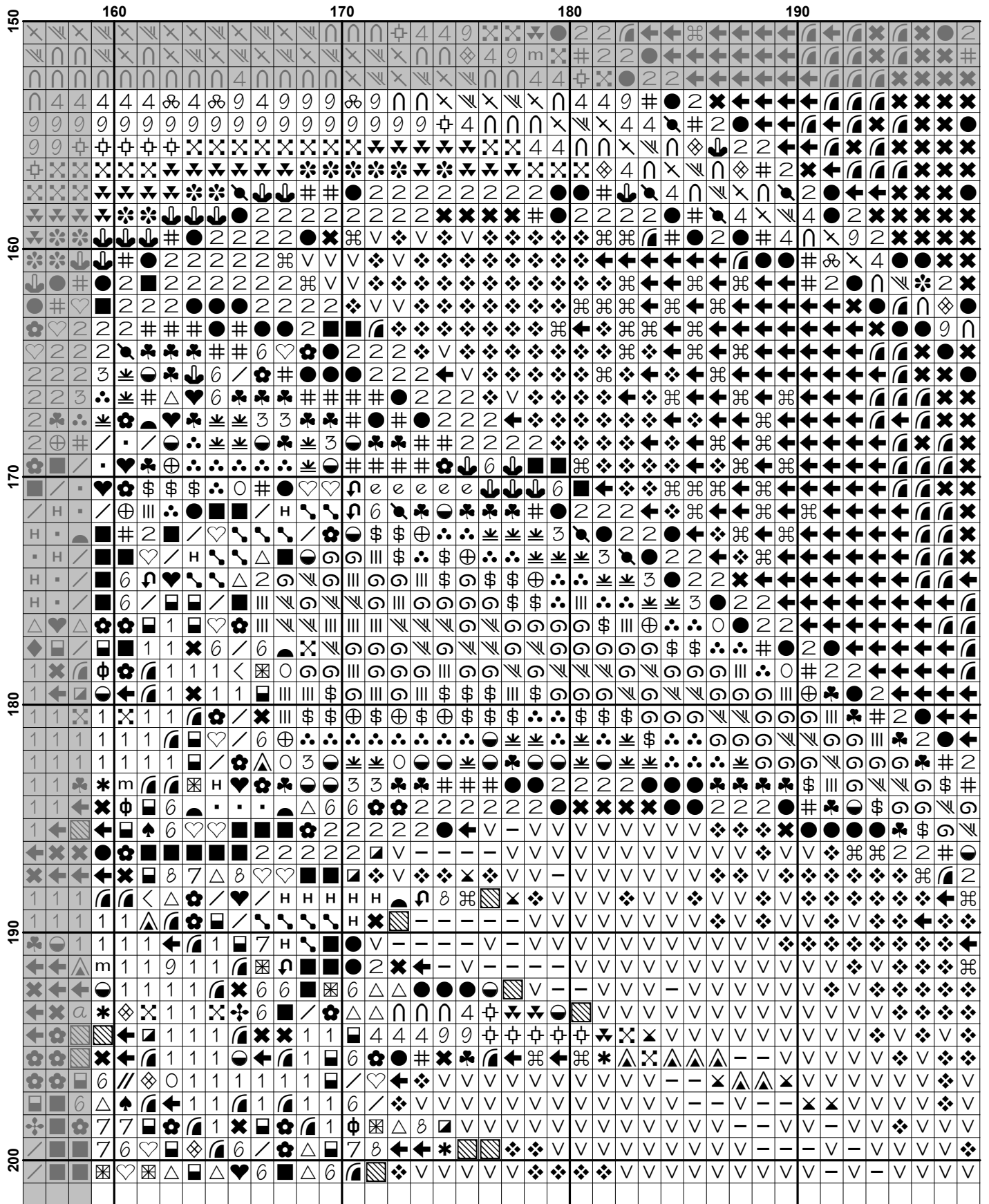


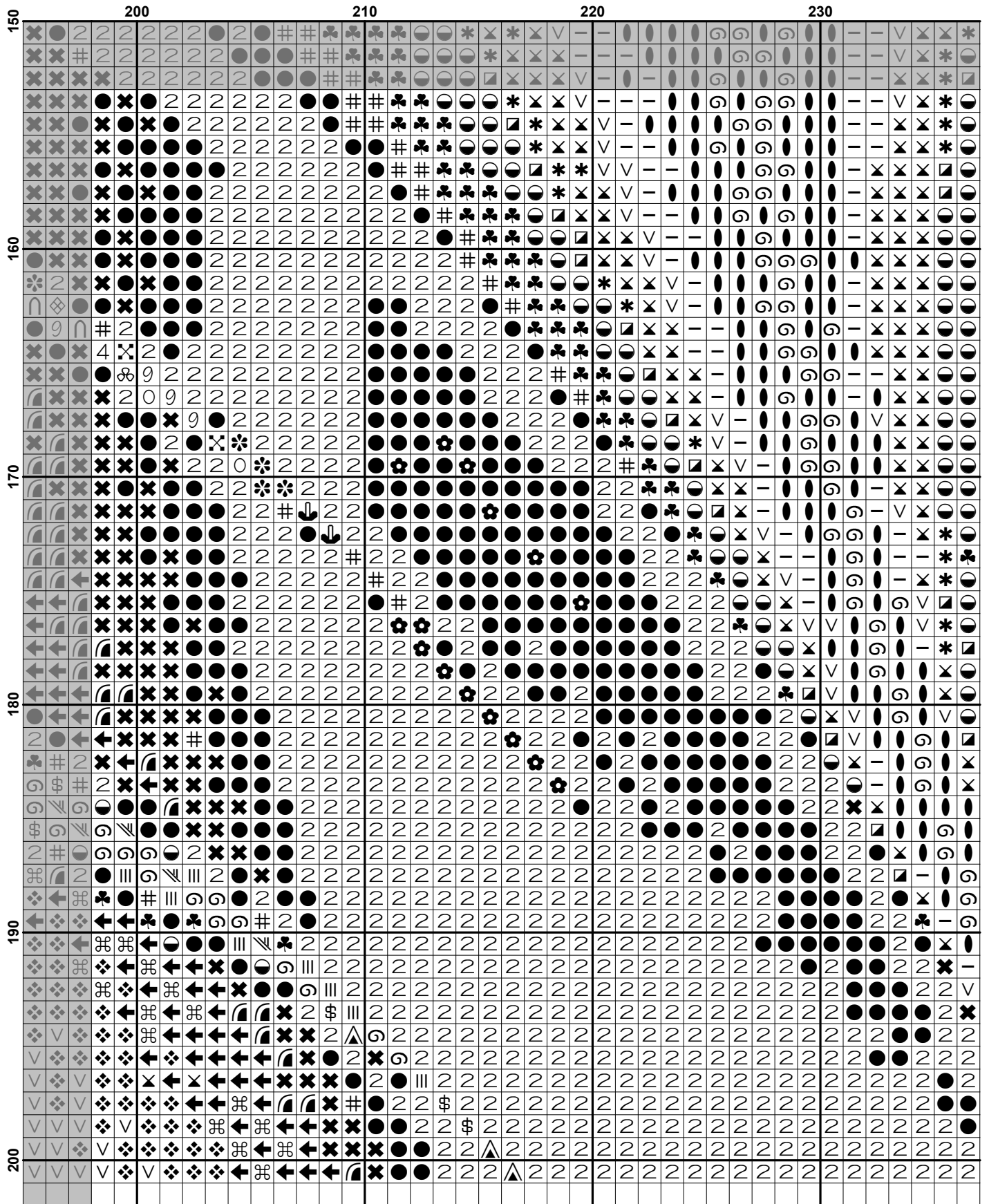


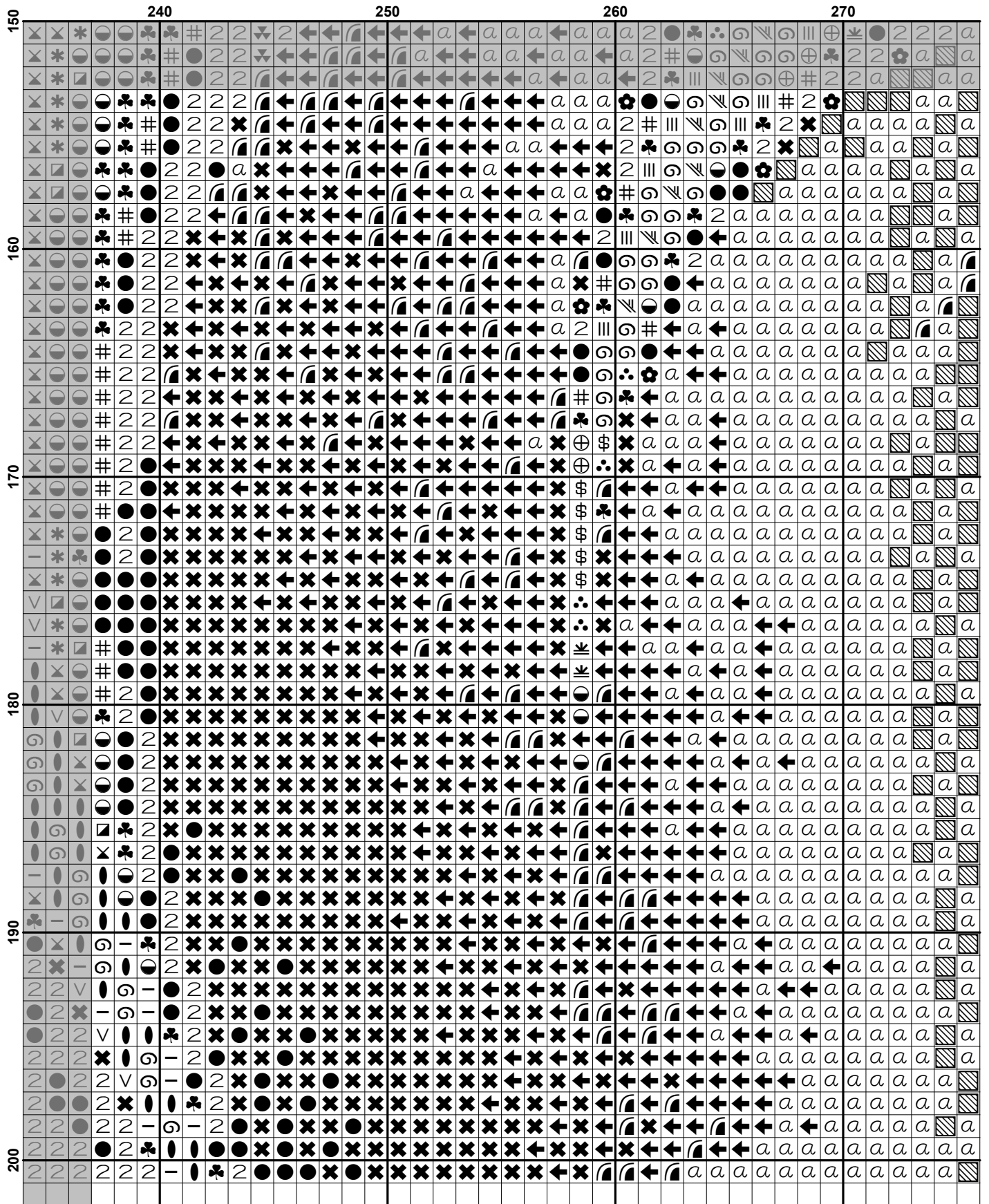












Pattern Name: Fractal Blooms
Designed By: Image by Gerd Altmann - Pixabay
Company: Artecy Cross Stitch
Copyright: Copyright Artecy Cross Stitch. All rights Reserved.
Fabric: Aida 14, White
 300w X 200h Stitches
Size(s): 14 Count, 21-3/8w X 14-1/4h in
 16 Count, 18-3/4w X 12-1/2h in
 18 Count, 16-5/8w X 11h in

Floss Used for Full Stitches:

Symbol	Strands	Type	Number	Color
	2	DMC	154	Grape-VY DK
	2	DMC	155	Blue Violet-MD DK
	2	DMC	158	Cornflower Blue-MD VY DK
	2	DMC	300	Mahogany-VY DK
	2	DMC	301	Mahogany-MD
	2	DMC	310	Black
	2	DMC	321	Christmas Red
	2	DMC	326	Rose-VY DK
	2	DMC	327	Violet-VY DK
	2	DMC	333	Blue Violet-VY DK
	2	DMC	336	Navy Blue
	2	DMC	349	Coral-DK
	2	DMC	371	Mustard
	2	DMC	400	Mahogany-DK
	2	DMC	434	Brown-LT
	2	DMC	436	Tan
	2	DMC	498	Christmas Red-DK
	2	DMC	550	Violet-VY DK
	2	DMC	600	Cranberry-VY DK
	2	DMC	606	Bright Orange-Red
	2	DMC	610	Drab Brown-DK
	2	DMC	612	Drab Brown-LT
	2	DMC	640	Beige Gray-VY DK
	2	DMC	666	Christmas Red-BRT
	2	DMC	718	Plum
	2	DMC	720	Orange Spice-DK
	2	DMC	740	Tangerine
	2	DMC	741	Tangerine-MD
	2	DMC	742	Tangerine-LT
	2	DMC	758	Terra Cotta-VY LT
	2	DMC	779	Cocoa-DK
	2	DMC	780	Topaz-UL VY DK
	2	DMC	782	Topaz-DK
	2	DMC	783	Topaz-MD
	2	DMC	791	Cornflower Blue-VY DK
	2	DMC	792	Cornflower Blue-DK
	2	DMC	796	Royal Blue-DK
	2	DMC	797	Royal Blue
	2	DMC	798	Delft Blue-DK
	2	DMC	801	Coffee Brown-DK
	2	DMC	814	Garnet-DK
	2	DMC	817	Coral Red-VY DK
	2	DMC	818	Baby Pink
	2	DMC	820	Royal Blue-VY DK
	2	DMC	823	Navy Blue-DK

Symbol	Strands	Type	Number	Color
	3	2	DMC 829	Golden Olive-VY DK
	//	2	DMC 891	Carnation-DK
	▣	2	DMC 915	Plum-DK
	✦	2	DMC 917	Plum-MD
	▣	2	DMC 919	Red Copper
	*	2	DMC 920	Copper-MD
	#	2	DMC 938	Coffee Brown-UL DK
	■	2	DMC 939	Navy Blue-VY DK
	✦	2	DMC 946	Burnt Orange-MD
	-	2	DMC 970	Pumpkin-LT
	⊕	2	DMC 976	Golden Brown-MD
	⊕	2	DMC 3012	Khaki Green-MD
	☪	2	DMC 3031	Mocha Brown-VY DK
	4	2	DMC 3045	Yellow Beige-DK
	●	2	DMC 3371	Black Brown
	☪	2	DMC 3746	Blue Violet-DK
	5	2	DMC 3801	Christmas Red-LT
	◆	2	DMC 3804	Cyclamen Pink-DK
	L	2	DMC 3807	Cornflower Blue
	≠	2	DMC 3821	Straw
	⊗	2	DMC 3828	Hazelnut Brown
	8	2	DMC 3834	Grape-DK
	7	2	DMC 3837	Lavender-UL DK
	\$	2	DMC 3852	Straw-VY DK
	✕	2	DMC 3862	Mocha Beige-DK

Notes:

The middle of this pattern can be found on page 12 and is 151 stitches across and 101 stitches down.

Pattern layout using page numbers in top left.

```

1  2  3  4  5  6  7  8
9  10 11 12 13 14 15 16
17 18 19 20 21 22 23 24
25 26 27 28 29 30 31 32

```

Usage Summary

Strands Per Skein: 6

Skein Length: 313.0 in

Type	Number	Full	Half	Quarter	Petite	Back(in)	Str(in)	Spec(in)	French	Bead	Skein Est.
DMC 154	154	1654	0	0	0	0.0	0.0	0.0	0	0	1.000
DMC 155	155	311	0	0	0	0.0	0.0	0.0	0	0	1.000
DMC 158	158	541	0	0	0	0.0	0.0	0.0	0	0	1.000
DMC 300	300	1127	0	0	0	0.0	0.0	0.0	0	0	1.000
DMC 301	301	119	0	0	0	0.0	0.0	0.0	0	0	1.000
DMC 310	310	4786	0	0	0	0.0	0.0	0.0	0	0	3.000
DMC 321	321	1793	0	0	0	0.0	0.0	0.0	0	0	1.000
DMC 326	326	70	0	0	0	0.0	0.0	0.0	0	0	1.000
DMC 327	327	244	0	0	0	0.0	0.0	0.0	0	0	1.000
DMC 333	333	1147	0	0	0	0.0	0.0	0.0	0	0	1.000
DMC 336	336	199	0	0	0	0.0	0.0	0.0	0	0	1.000
DMC 349	349	85	0	0	0	0.0	0.0	0.0	0	0	1.000
DMC 371	371	234	0	0	0	0.0	0.0	0.0	0	0	1.000
DMC 400	400	1404	0	0	0	0.0	0.0	0.0	0	0	1.000
DMC 434	434	153	0	0	0	0.0	0.0	0.0	0	0	1.000
DMC 436	436	176	0	0	0	0.0	0.0	0.0	0	0	1.000
DMC 498	498	656	0	0	0	0.0	0.0	0.0	0	0	1.000
DMC 550	550	1447	0	0	0	0.0	0.0	0.0	0	0	1.000
DMC 600	600	389	0	0	0	0.0	0.0	0.0	0	0	1.000
DMC 606	606	2179	0	0	0	0.0	0.0	0.0	0	0	2.000
DMC 610	610	454	0	0	0	0.0	0.0	0.0	0	0	1.000
DMC 612	612	118	0	0	0	0.0	0.0	0.0	0	0	1.000
DMC 640	640	321	0	0	0	0.0	0.0	0.0	0	0	1.000
DMC 666	666	1781	0	0	0	0.0	0.0	0.0	0	0	1.000
DMC 718	718	337	0	0	0	0.0	0.0	0.0	0	0	1.000
DMC 720	720	995	0	0	0	0.0	0.0	0.0	0	0	1.000
DMC 740	740	1076	0	0	0	0.0	0.0	0.0	0	0	1.000
DMC 741	741	1095	0	0	0	0.0	0.0	0.0	0	0	1.000
DMC 742	742	703	0	0	0	0.0	0.0	0.0	0	0	1.000
DMC 758	758	95	0	0	0	0.0	0.0	0.0	0	0	1.000
DMC 779	779	223	0	0	0	0.0	0.0	0.0	0	0	1.000
DMC 780	780	222	0	0	0	0.0	0.0	0.0	0	0	1.000
DMC 782	782	283	0	0	0	0.0	0.0	0.0	0	0	1.000
DMC 783	783	126	0	0	0	0.0	0.0	0.0	0	0	1.000
DMC 791	791	923	0	0	0	0.0	0.0	0.0	0	0	1.000
DMC 792	792	620	0	0	0	0.0	0.0	0.0	0	0	1.000
DMC 796	796	445	0	0	0	0.0	0.0	0.0	0	0	1.000
DMC 797	797	403	0	0	0	0.0	0.0	0.0	0	0	1.000
DMC 798	798	202	0	0	0	0.0	0.0	0.0	0	0	1.000
DMC 801	801	153	0	0	0	0.0	0.0	0.0	0	0	1.000
DMC 814	814	2316	0	0	0	0.0	0.0	0.0	0	0	2.000
DMC 817	817	3207	0	0	0	0.0	0.0	0.0	0	0	2.000
DMC 818	818	9922	0	0	0	0.0	0.0	0.0	0	0	6.000
DMC 820	820	935	0	0	0	0.0	0.0	0.0	0	0	1.000
DMC 823	823	571	0	0	0	0.0	0.0	0.0	0	0	1.000
DMC 829	829	106	0	0	0	0.0	0.0	0.0	0	0	1.000
DMC 891	891	313	0	0	0	0.0	0.0	0.0	0	0	1.000
DMC 915	915	807	0	0	0	0.0	0.0	0.0	0	0	1.000
DMC 917	917	81	0	0	0	0.0	0.0	0.0	0	0	1.000
DMC 919	919	492	0	0	0	0.0	0.0	0.0	0	0	1.000
DMC 920	920	437	0	0	0	0.0	0.0	0.0	0	0	1.000

Type	Number	Full	Half	Quarter	Petite	Back(in)	Str(in)	Spec(in)	French	Bead	Skein Est.
DMC	938	753	0	0	0	0.0	0.0	0.0	0	0	1.000
DMC	939	2782	0	0	0	0.0	0.0	0.0	0	0	2.000
DMC	946	850	0	0	0	0.0	0.0	0.0	0	0	1.000
DMC	970	981	0	0	0	0.0	0.0	0.0	0	0	1.000
DMC	976	143	0	0	0	0.0	0.0	0.0	0	0	1.000
DMC	3012	155	0	0	0	0.0	0.0	0.0	0	0	1.000
DMC	3031	369	0	0	0	0.0	0.0	0.0	0	0	1.000
DMC	3045	120	0	0	0	0.0	0.0	0.0	0	0	1.000
DMC	3371	1864	0	0	0	0.0	0.0	0.0	0	0	2.000
DMC	3746	608	0	0	0	0.0	0.0	0.0	0	0	1.000
DMC	3801	126	0	0	0	0.0	0.0	0.0	0	0	1.000
DMC	3804	233	0	0	0	0.0	0.0	0.0	0	0	1.000
DMC	3807	101	0	0	0	0.0	0.0	0.0	0	0	1.000
DMC	3821	207	0	0	0	0.0	0.0	0.0	0	0	1.000
DMC	3828	55	0	0	0	0.0	0.0	0.0	0	0	1.000
DMC	3834	129	0	0	0	0.0	0.0	0.0	0	0	1.000
DMC	3837	1510	0	0	0	0.0	0.0	0.0	0	0	1.000
DMC	3852	129	0	0	0	0.0	0.0	0.0	0	0	1.000
DMC	3862	409	0	0	0	0.0	0.0	0.0	0	0	1.000