



CROSS STITCH

Yosemite National Park



* Original image© Christian Joudrey - Unsplash
Cross Stitch Design by Tereena Clarke.

Completed Size = 300w x 210h Stitches

14 Count, 21.5w x 15h inches (55cm x 38cm)

16 Count, 19w x 13.5h inches (48cm x 34cm)

18 Count, 17w x 12h inches (43cm x 30.5cm)

Uses 76 DMC cotton colours. Only full cross stitches are used in this pattern.

Pattern Instructions

* This pattern can be worked on any fabric type, colour or count you prefer. To work out the size of the finished article, take the number of stitches wide and high and divide it by the count of your fabric (e.g. 14,16,18 count aida etc) to get the size in inches. Times it by 2.54 to get centimetres. We have the sizes in inches shown on the previous page. Also leave at least a few inches of fabric around each side of the design to assist in framing. The higher the fabric count the smaller the completed project will be.

* To put the pattern together look in the top and bottom corners. The page numbers in brackets show which page number it joins up to. Page 1 always starts at the top left hand side of the pattern. Our pages also have a shaded grey section. This indicates a 3 row overlap from adjoining pages to assist with reading the pattern. PLEASE DO NOT RESTITCH THIS AREA.

* You should begin at the centre of the pattern. To find the centre of the pattern it is just a matter of laying the pattern out and locating the arrows at the top and left hand side of the patterns, they are determined by dividing the stitch numbers wide and high in half. Where the two points meet in the middle, that is the centre.

* If you need more assistance to find the middle of your pattern or the page layout, please see the notes section on the colour symbol chart. The easiest way to stitch this pattern, as it has multiple pages, is to stitch one page at a time.

* We suggest using two strands of floss for each stitch and one strand for backstitching if the pattern calls for it.

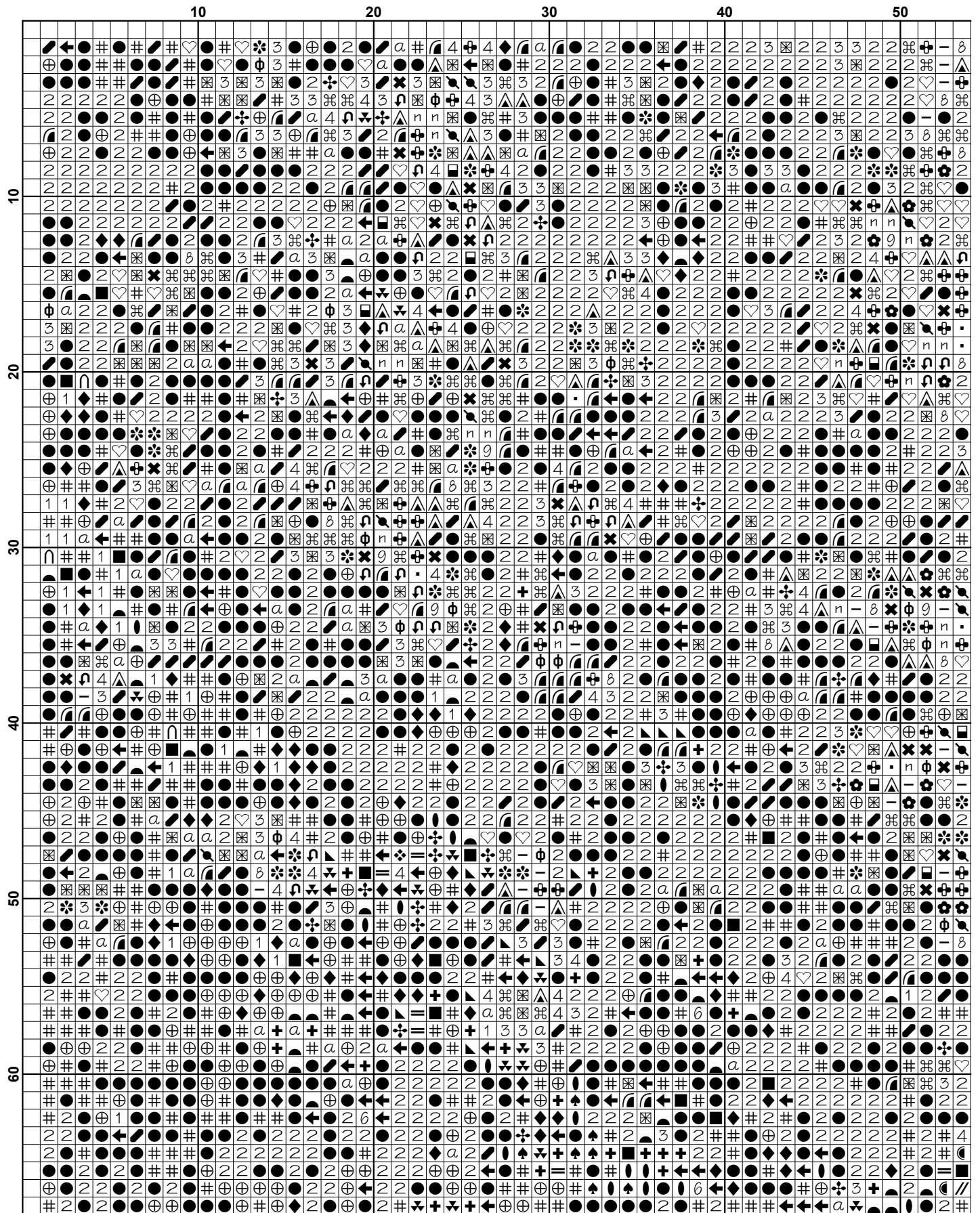
We hope you enjoy stitching our pattern.

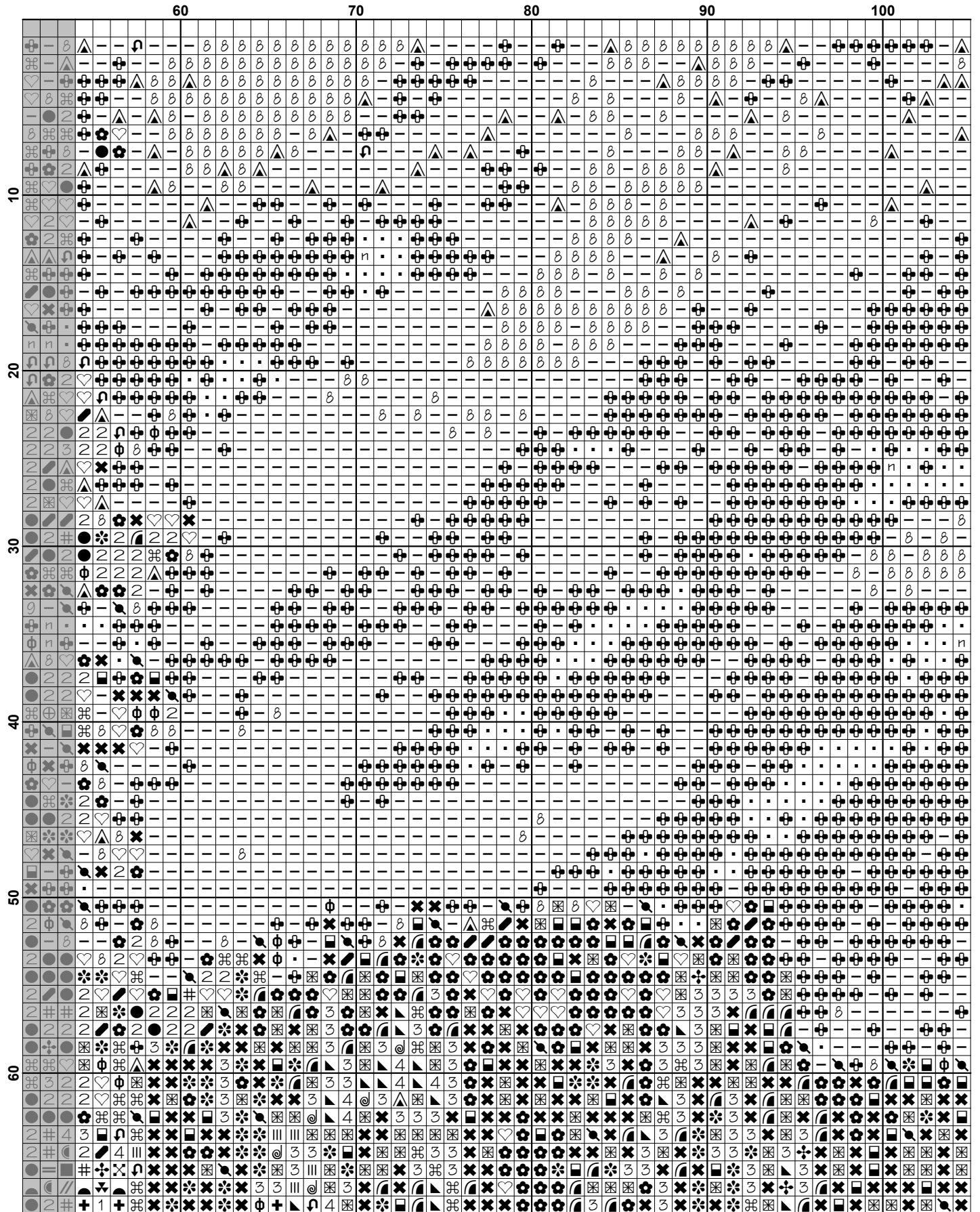
Thanks and Best Wishes
Tereena Clarke

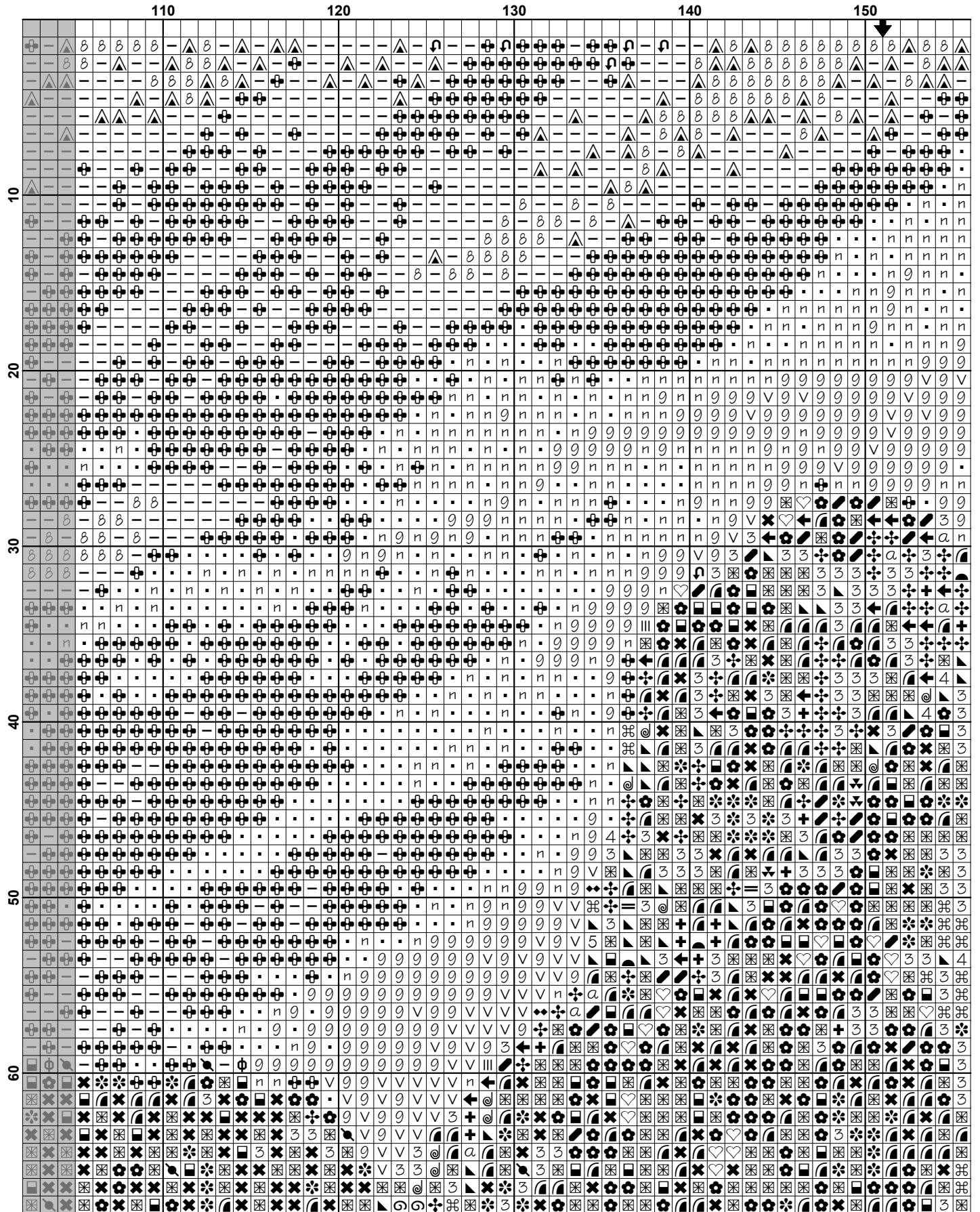
Artecy Cross Stitch
Po Box 3474
Tuggerah, NSW 2259
Australia

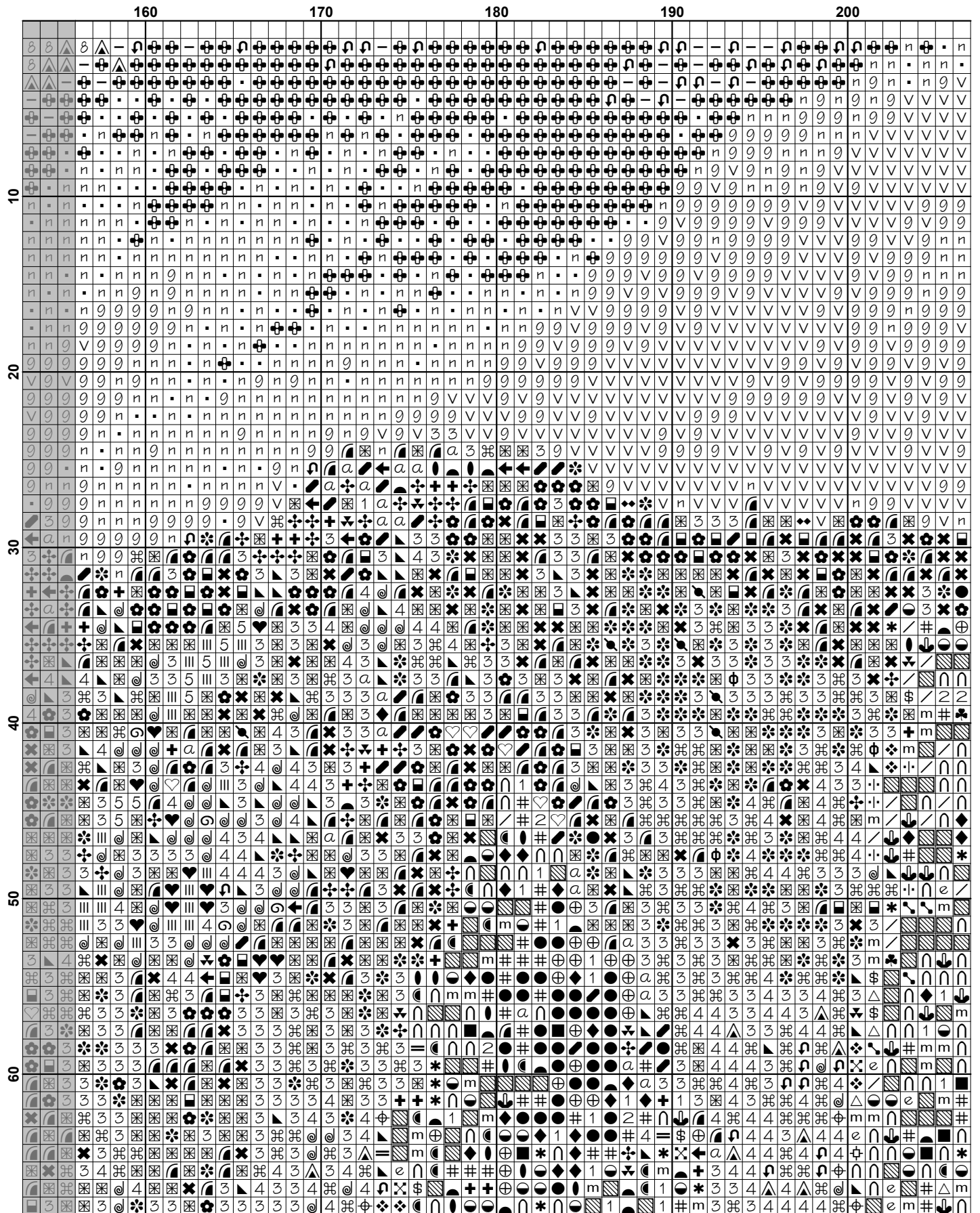
Websites: www.artecy.com and www.artecyshop.com
Email: artecy@artecy.com or stitch@artecyshop.com

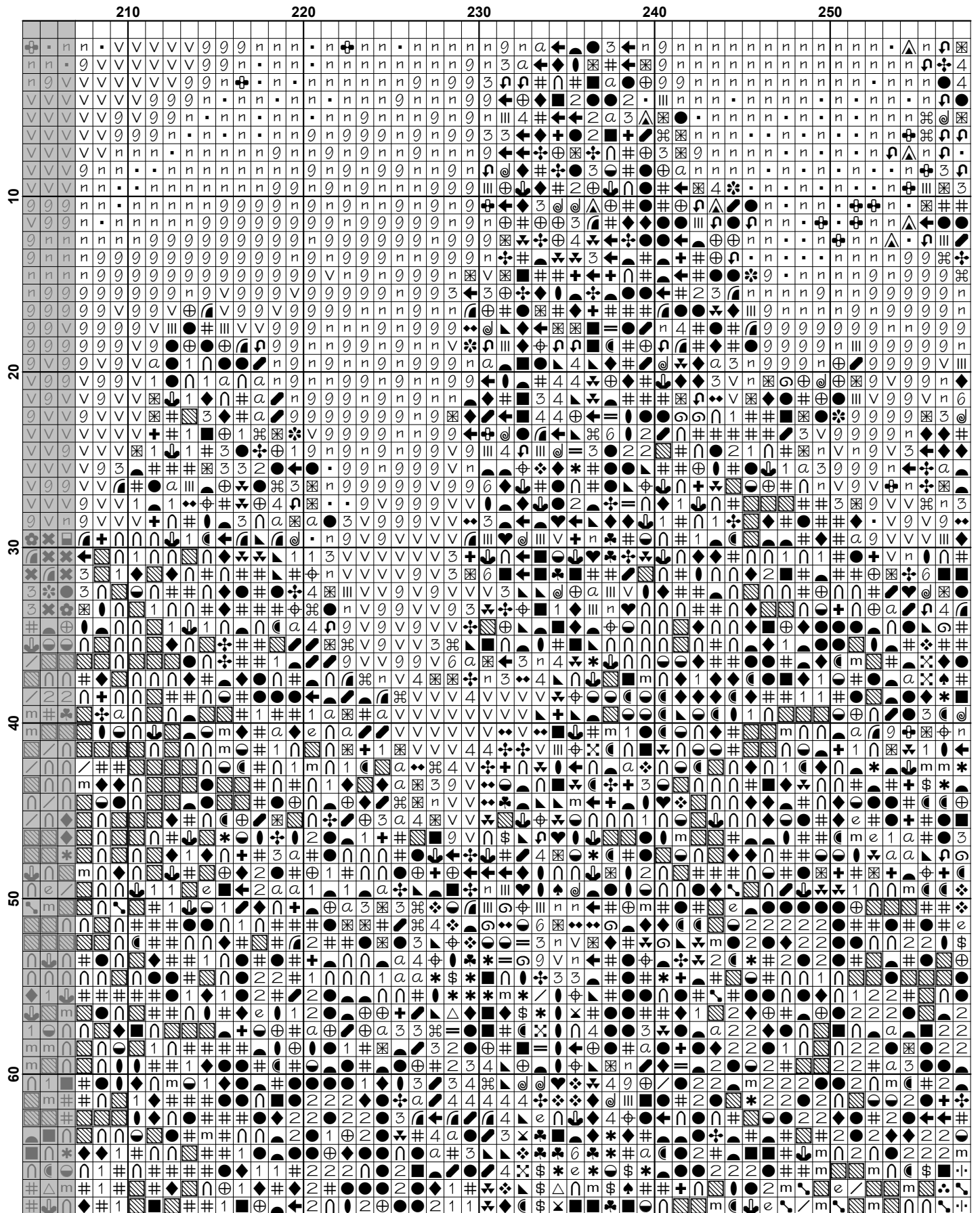
*Patterns are strictly for personal use only. It is against our copyright to make kits for sale from our designs or to sell, copy or redistribute this pattern in any form. You may not upload our patterns to any internet forums or groups or any other website. You may make 1 copy of this pattern for a working copy for your own personal use if needed.

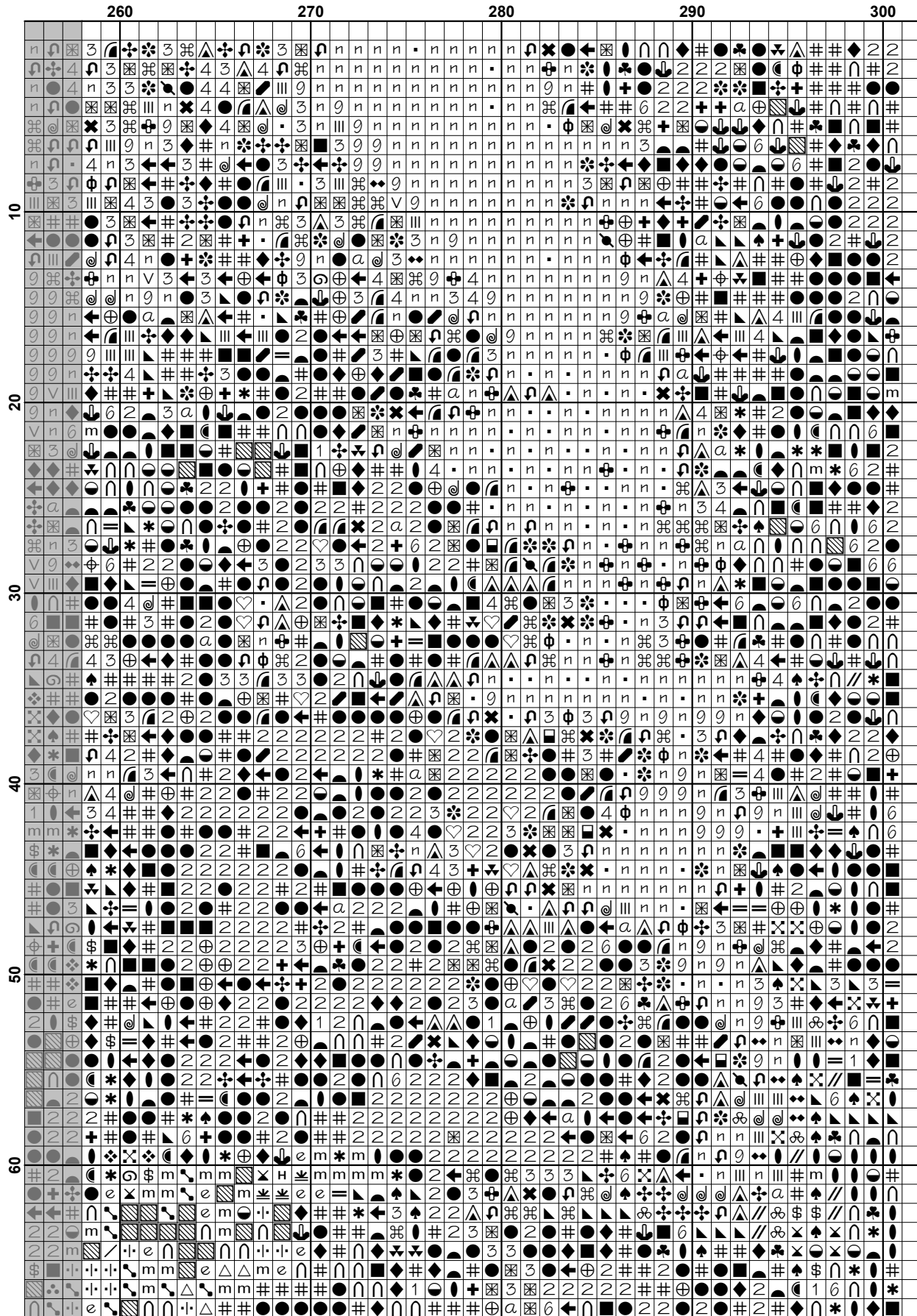


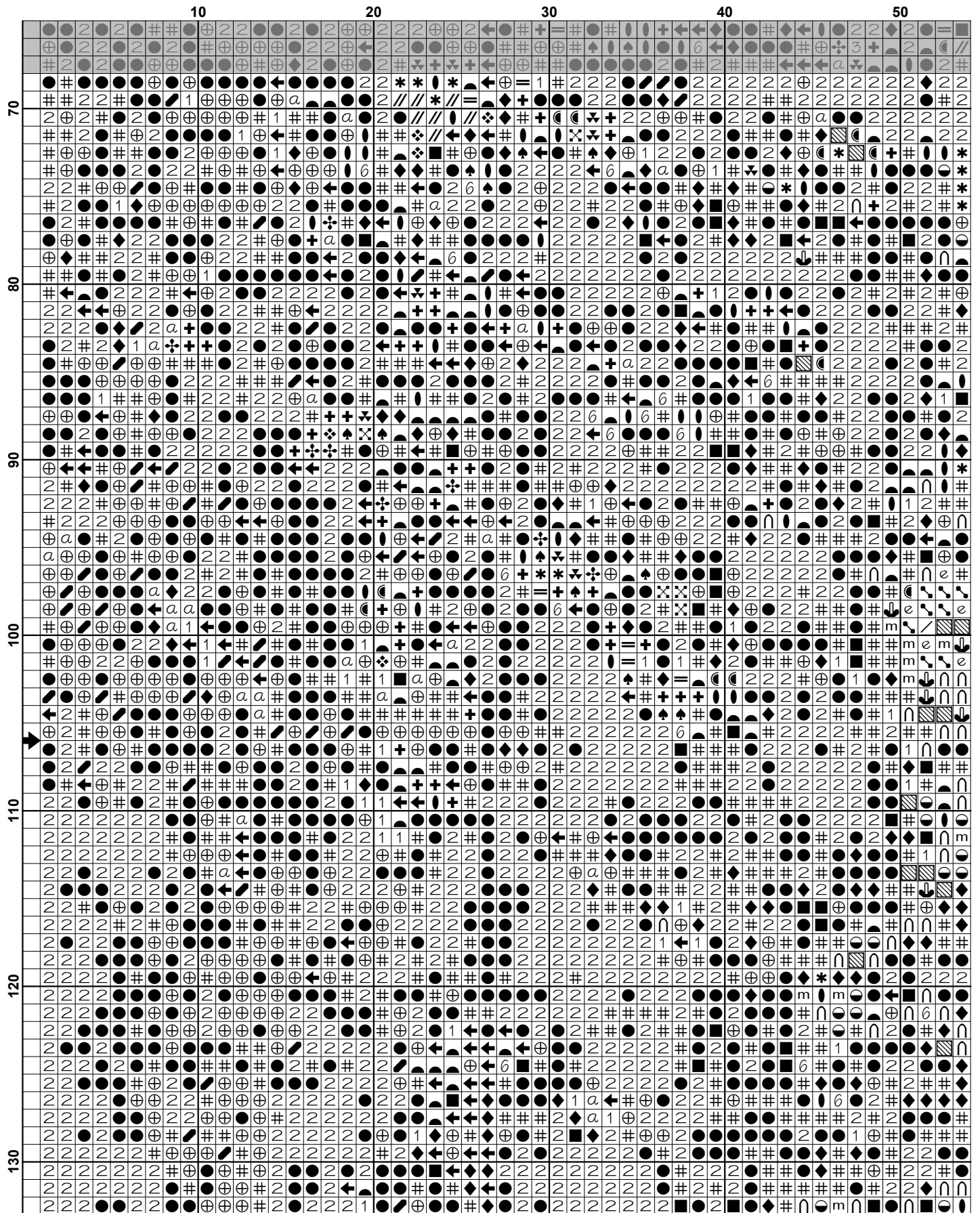


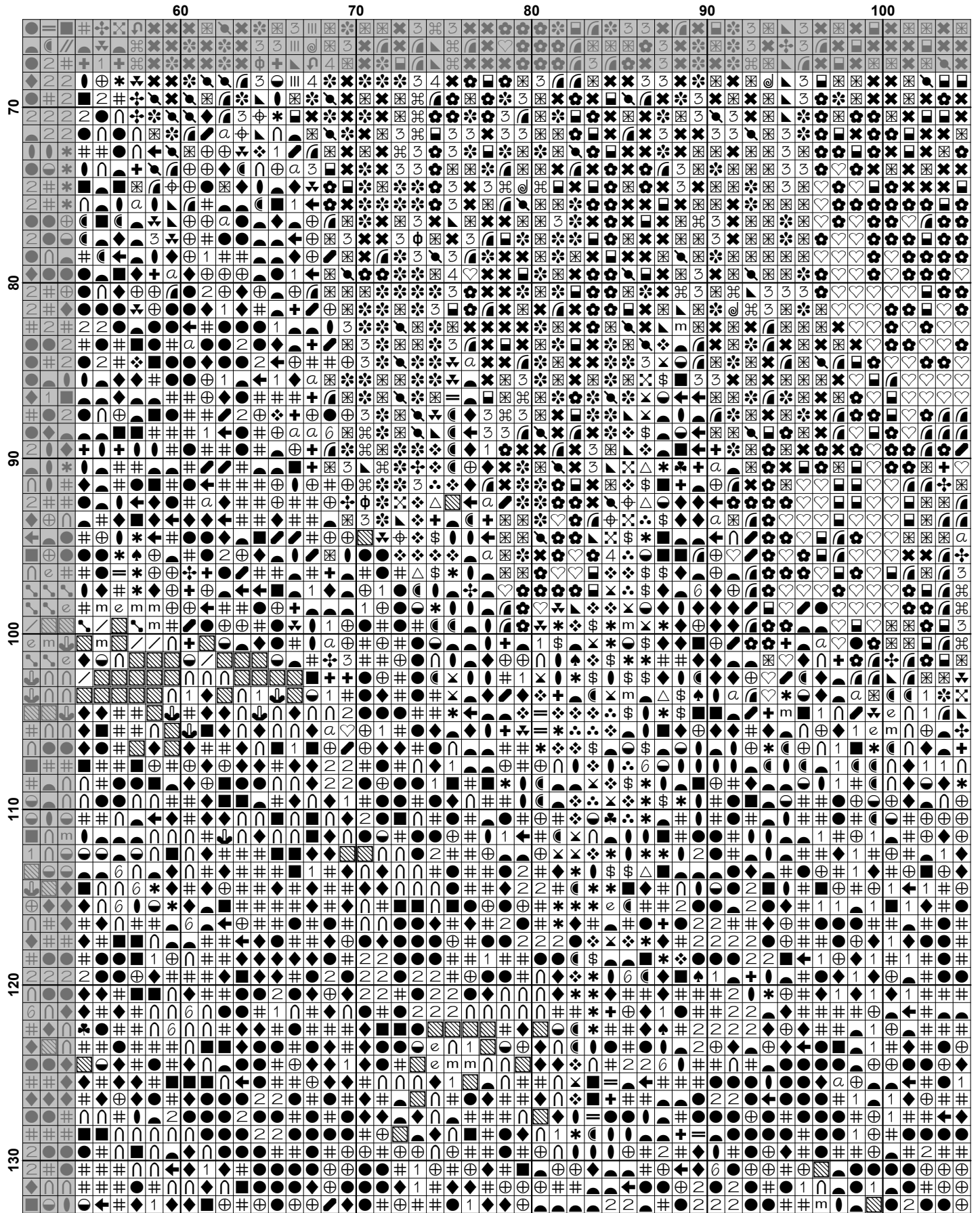


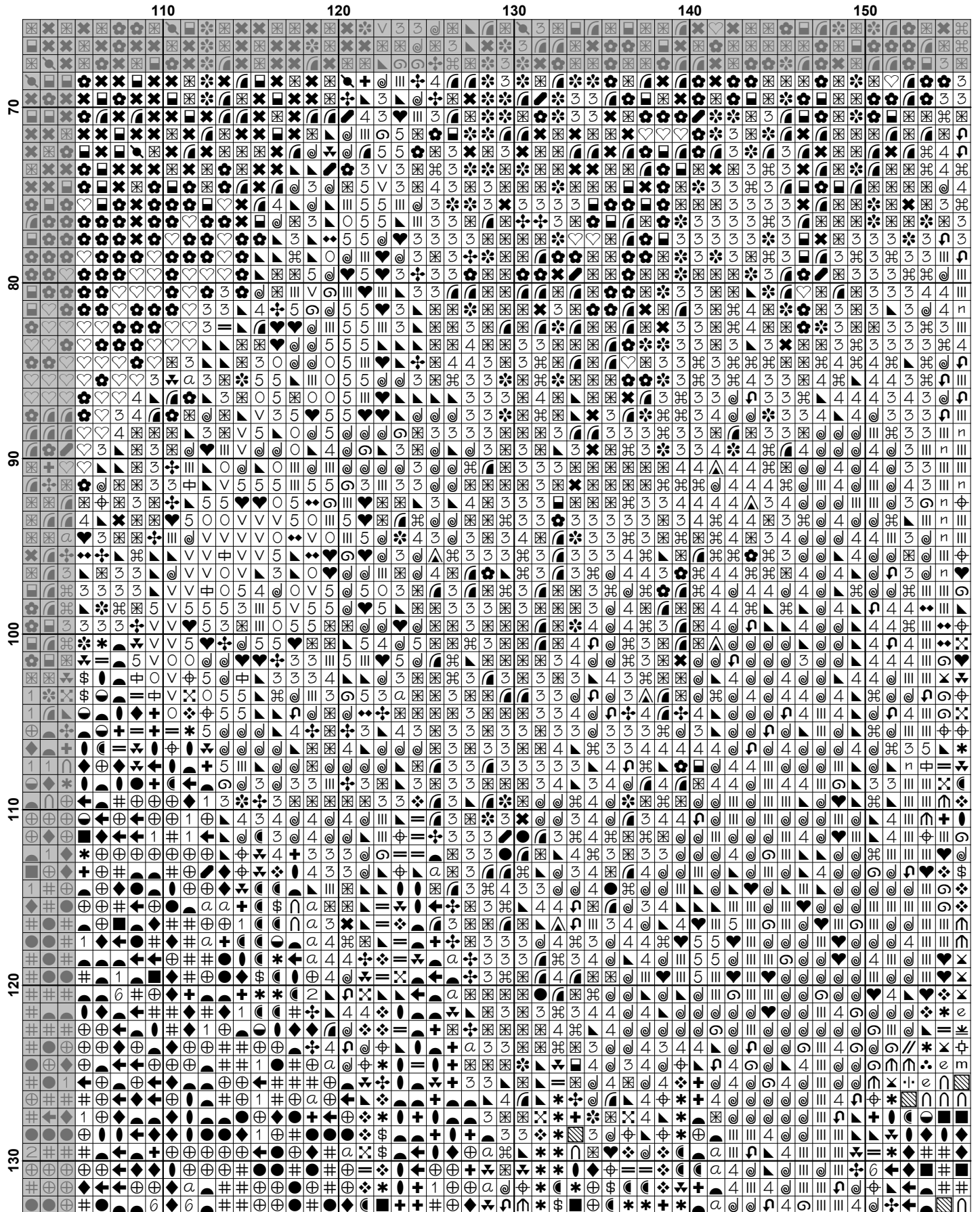


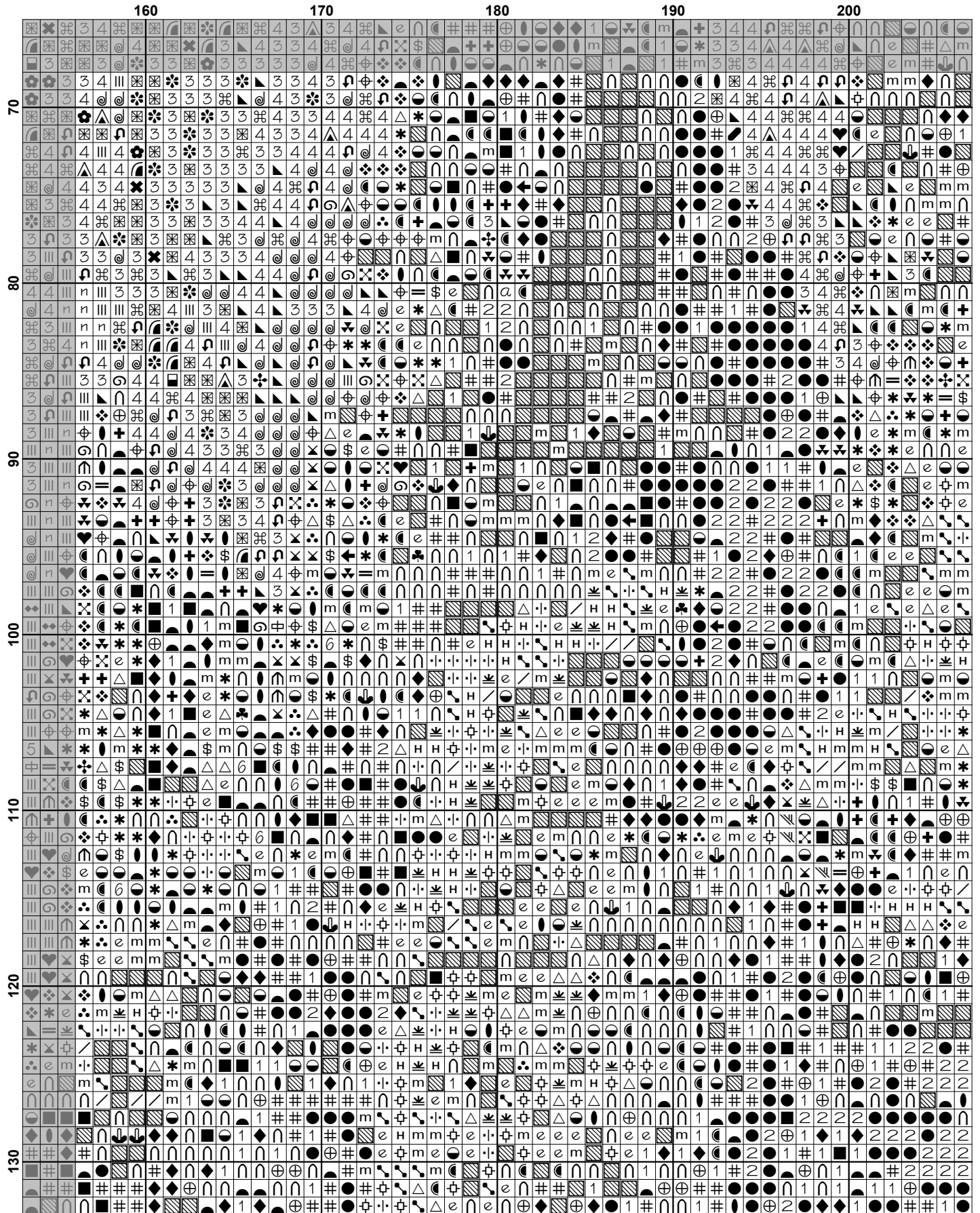


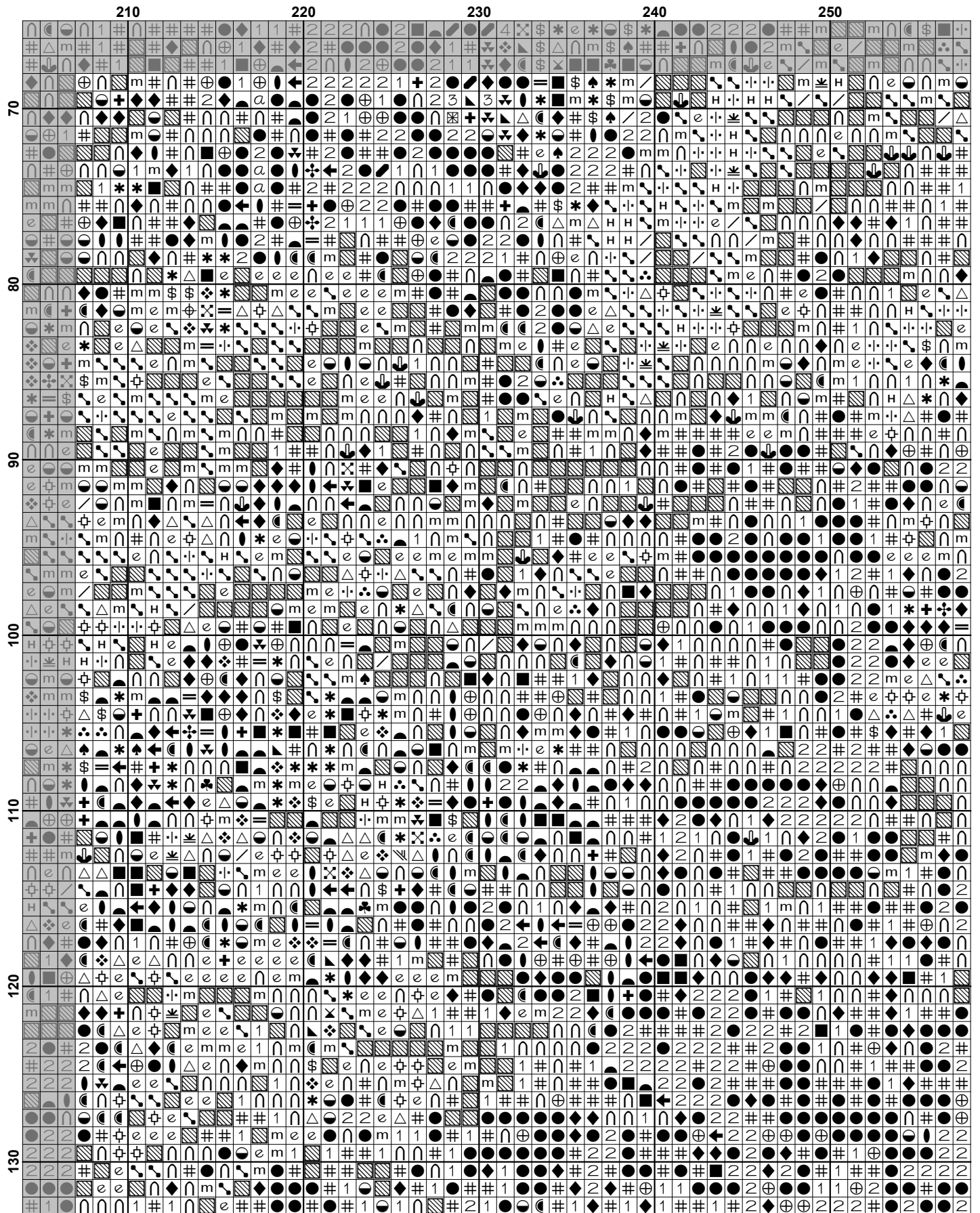


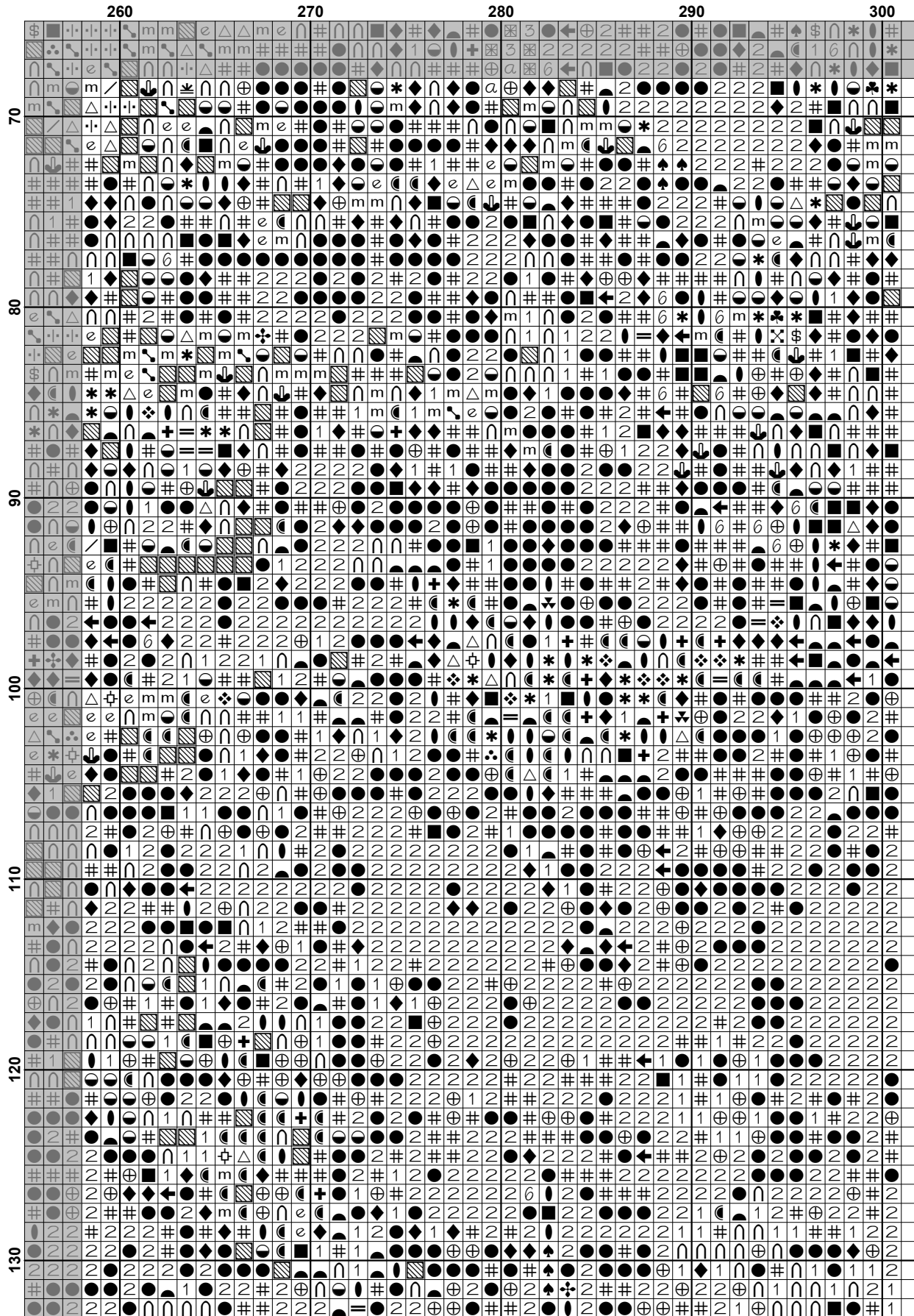


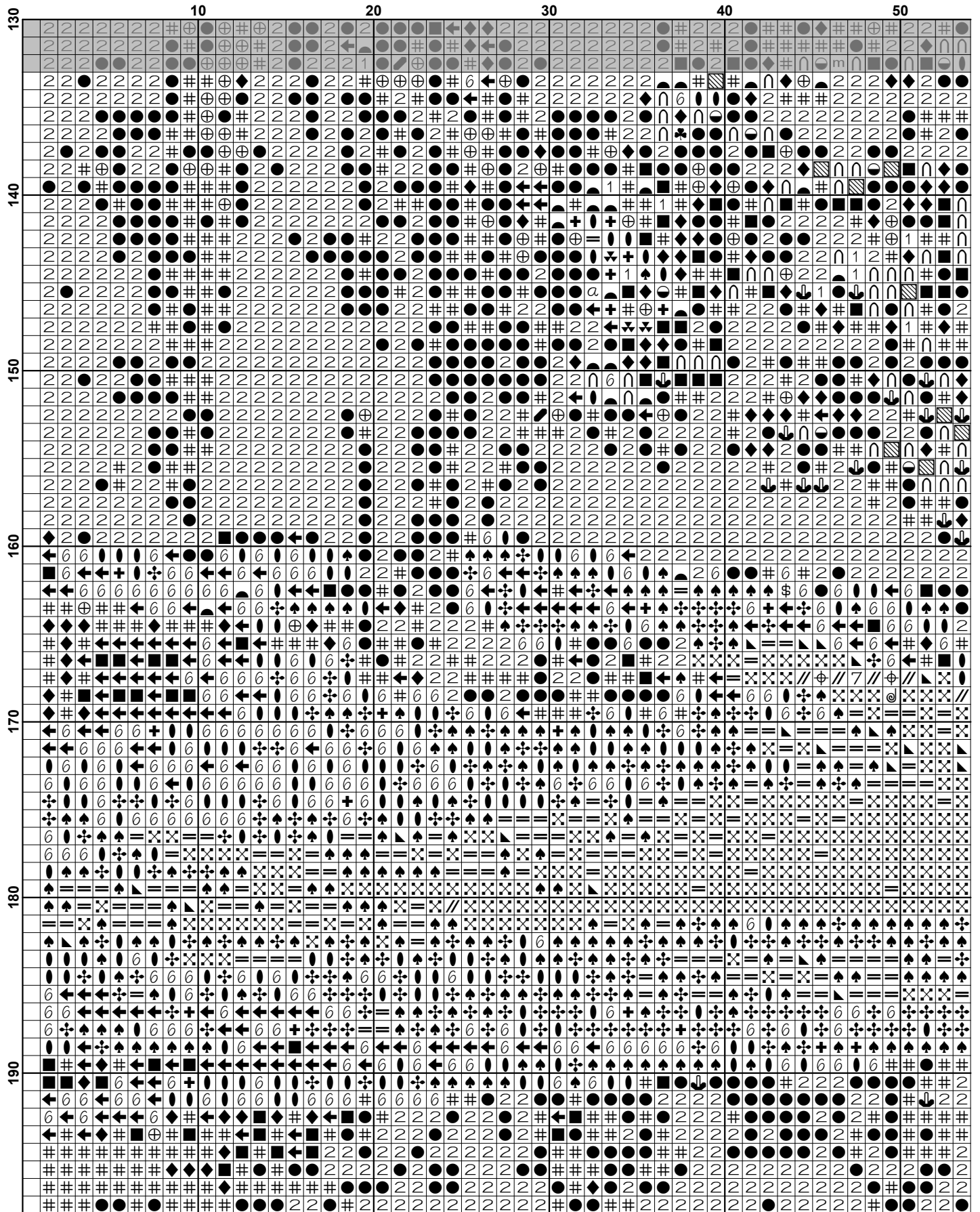


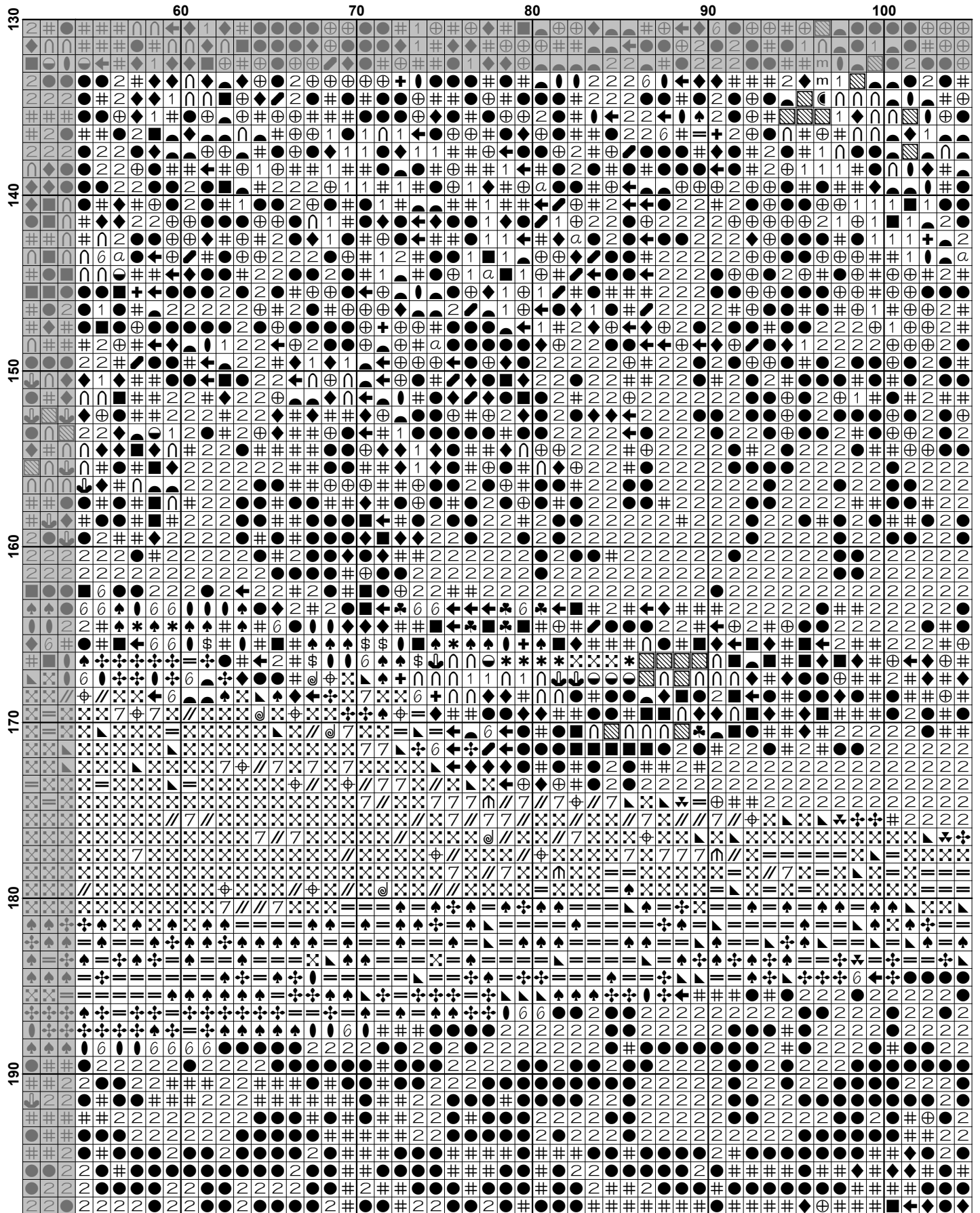


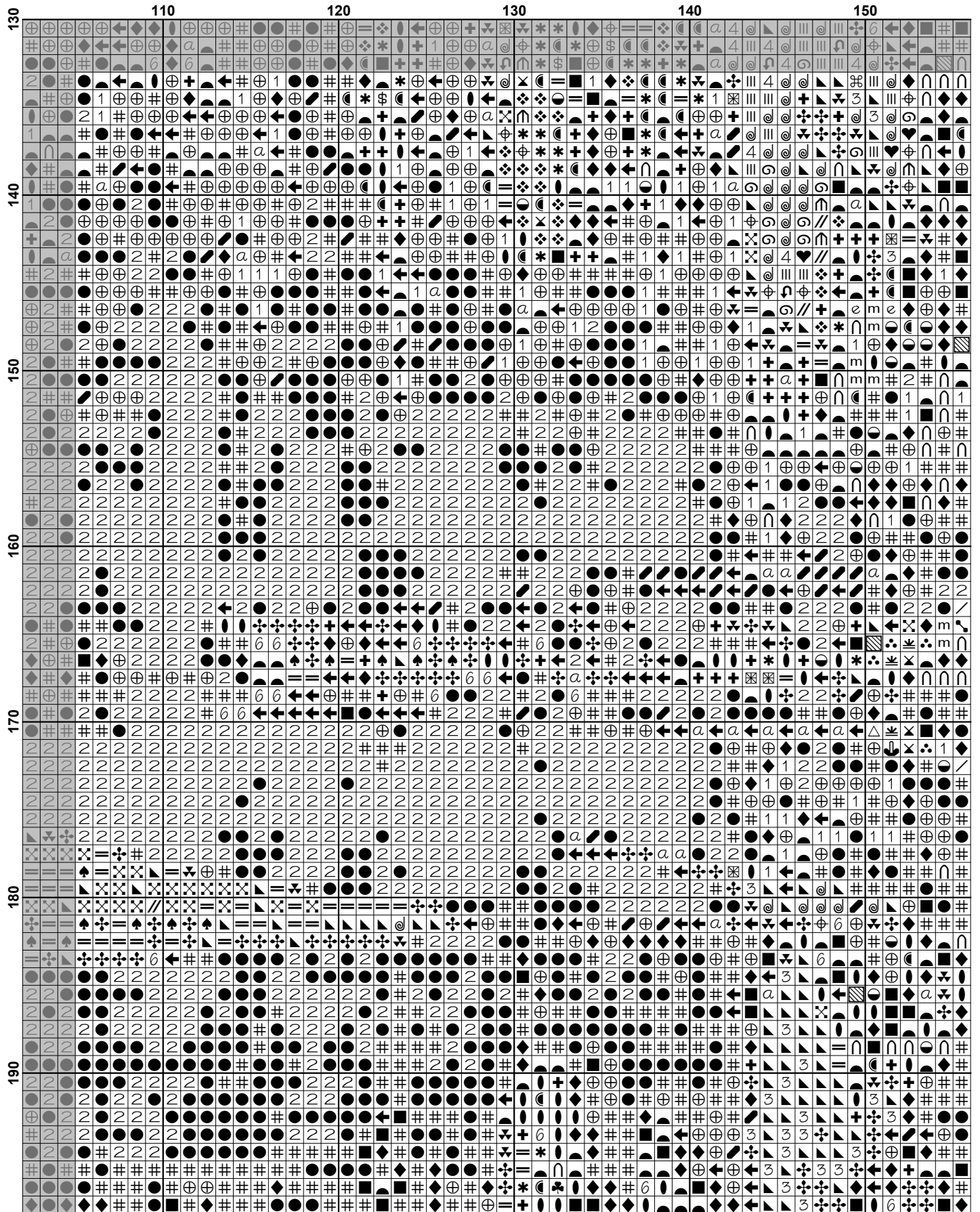


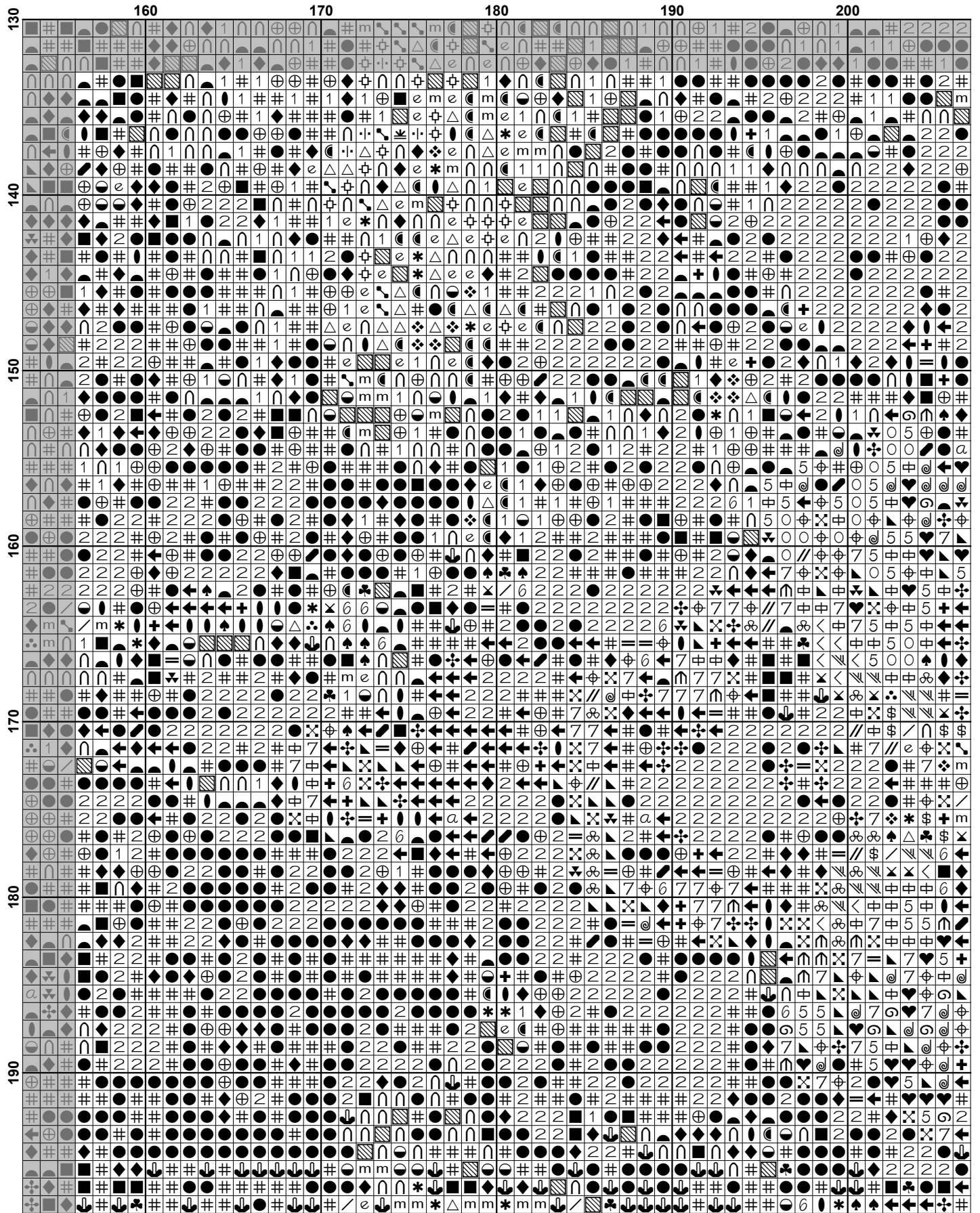


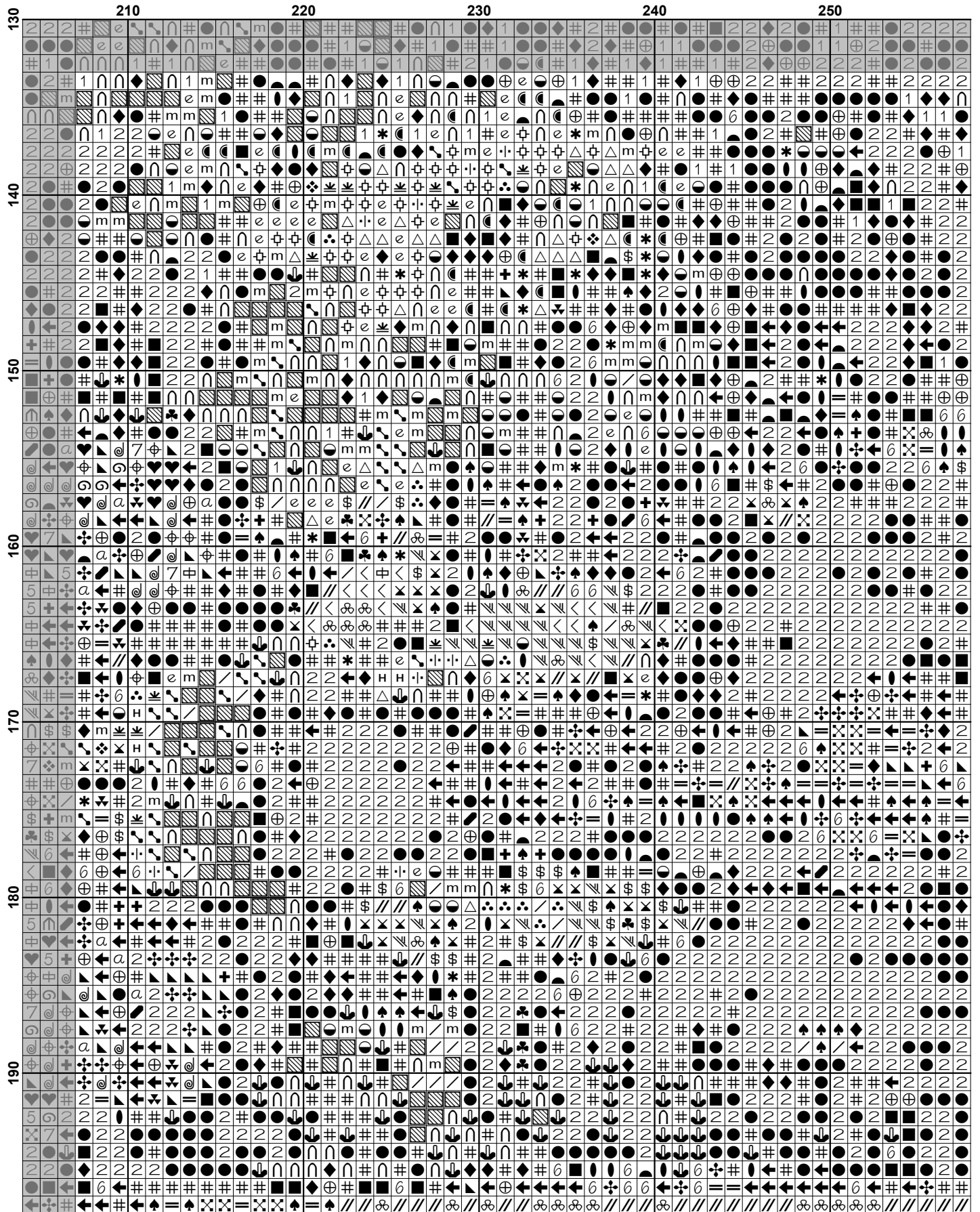


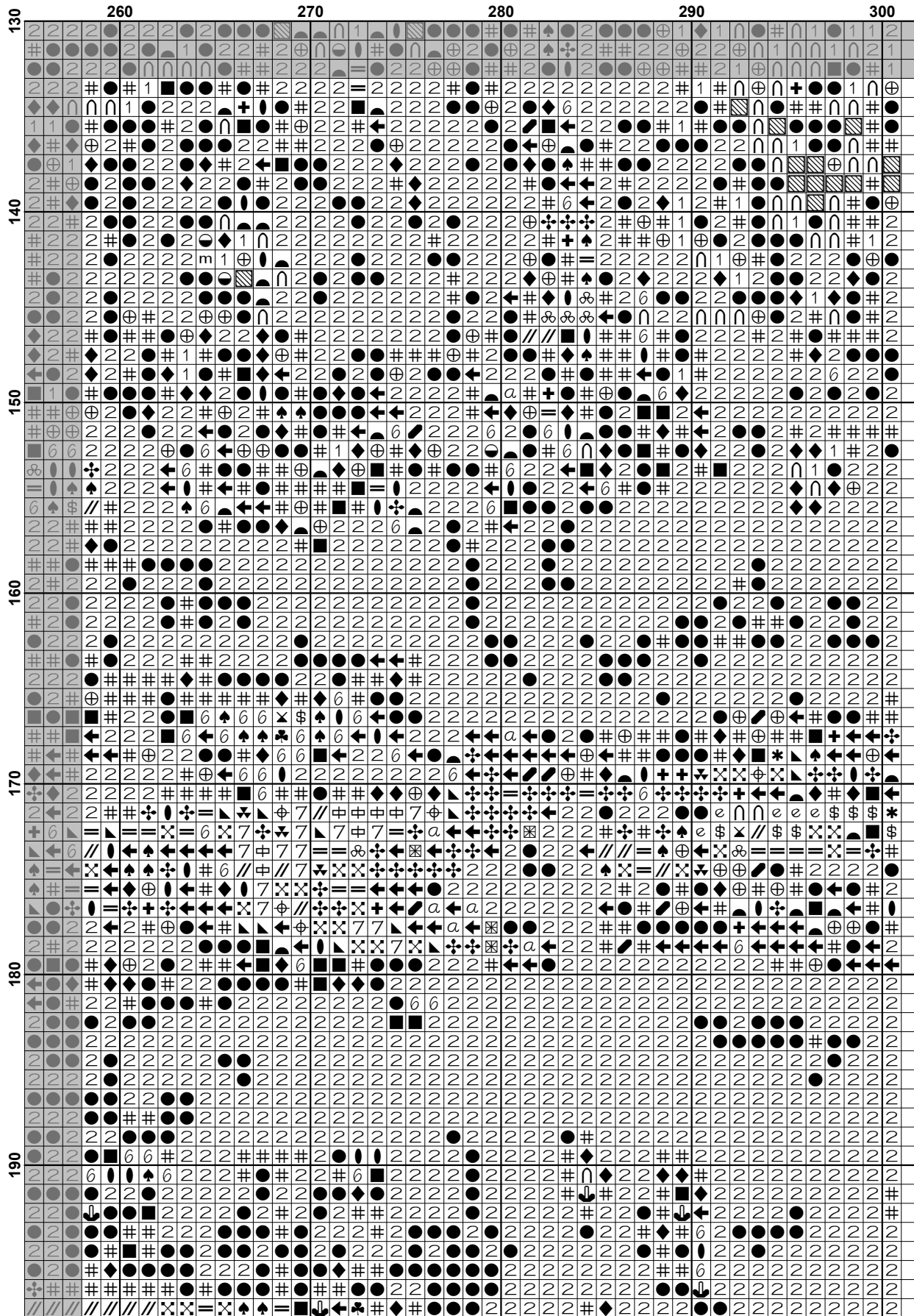


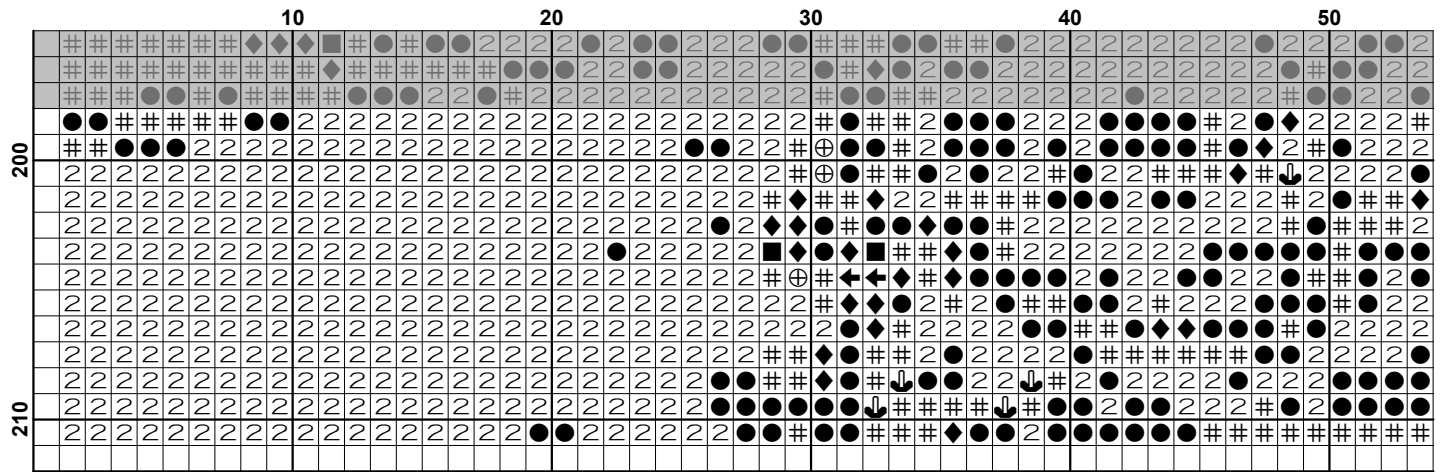


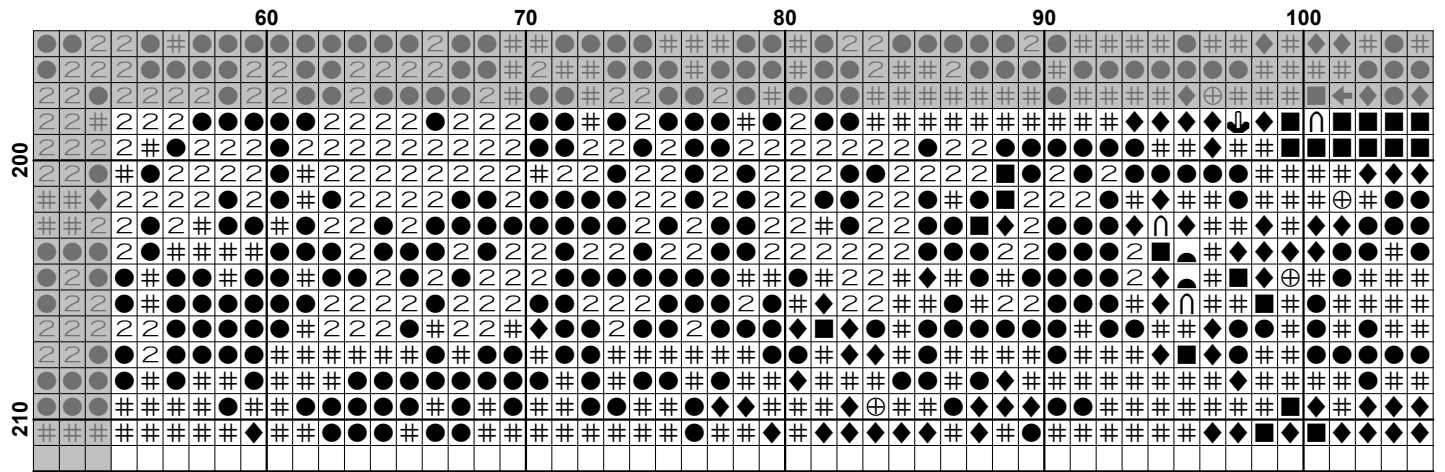


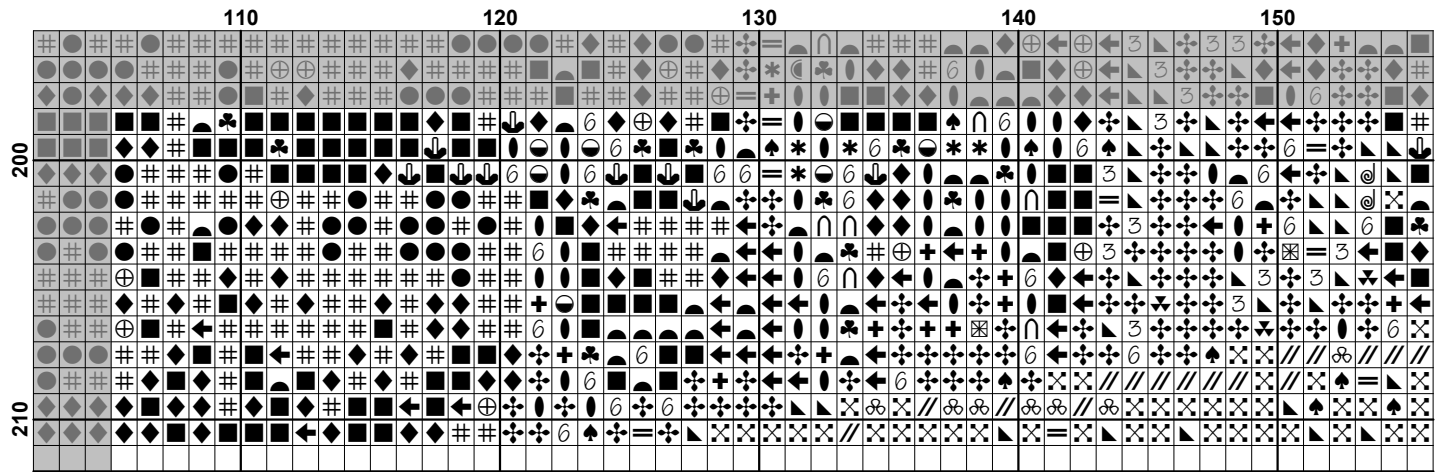


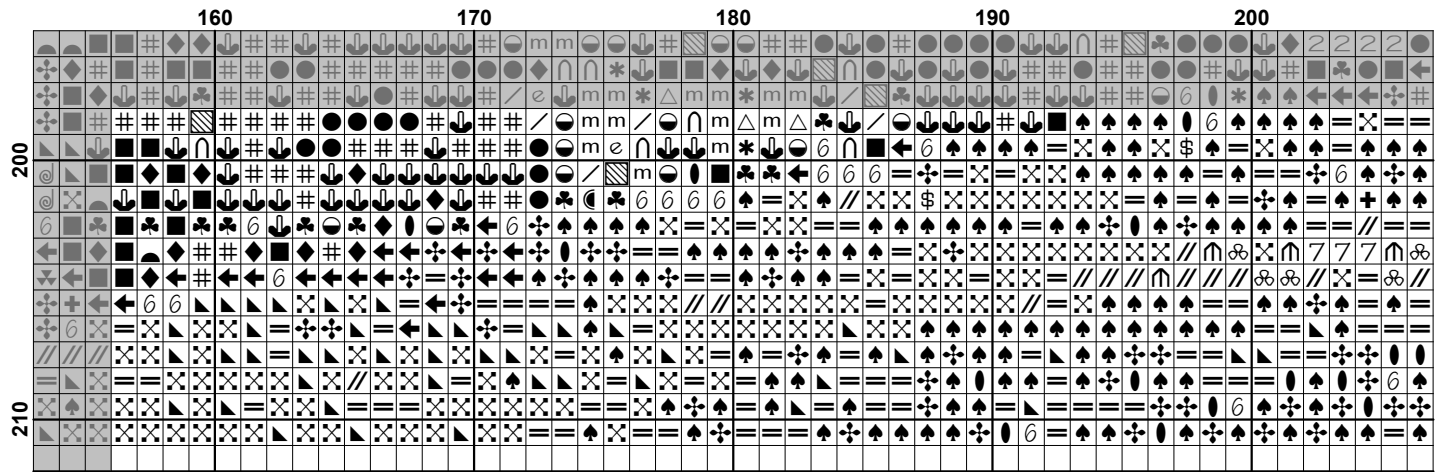


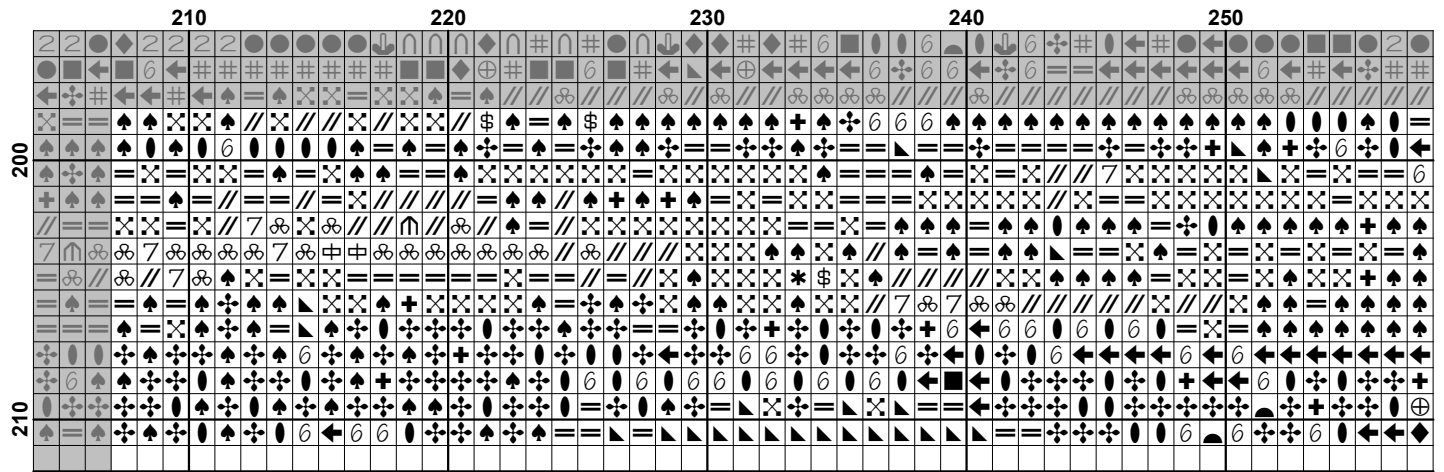


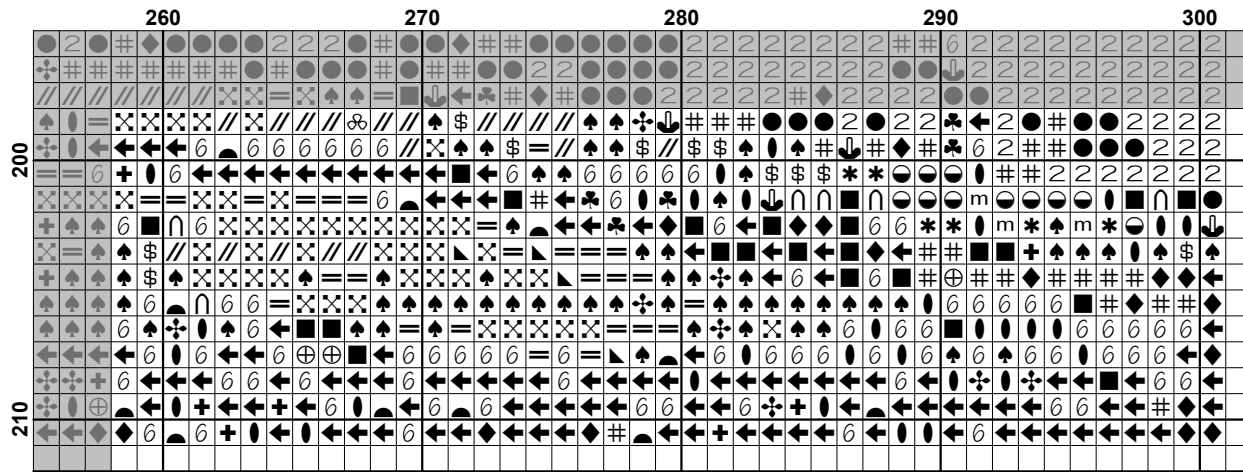















Pattern Name: Yosemite National Park
Designed By: Photo by Christian Joudrey - Unsplash
Company: Artecy Cross Stitch
Copyright: Copyright Artecy Cross Stitch. All rights Reserved.
Fabric: Aida 14, White
 300w X 210h Stitches
Size(s): 14 Count, 21-3/8w X 15h in
 16 Count, 18-3/4w X 13-1/8h in
 18 Count, 16-5/8w X 11-5/8h in

Floss Used for Full Stitches:

Symbol	Strands	Type	Number	Color
	2	DMC	158	Cornflower Blue-MD VY DK
	2	DMC	159	Gray Blue-LT
	2	DMC	160	Gray Blue-MD
	2	DMC	161	Gray Blue
	2	DMC	166	Moss Green-MD LT
	2	DMC	224	Shell Pink-VY LT
	2	DMC	225	Shell Pink-UL VY LT
	2	DMC	300	Mahogany-VY DK
	2	DMC	310	Black
	2	DMC	317	Pewter Gray
	2	DMC	318	Steel Gray-LT
	2	DMC	336	Navy Blue
	2	DMC	340	Blue Violet-MD
	2	DMC	370	Mustard-MD
	2	DMC	407	Desert Sand-DK
	2	DMC	413	Pewter Gray-DK
	2	DMC	414	Steel Gray-DK
	2	DMC	436	Tan
	2	DMC	453	Shell Gray-LT
	2	DMC	524	Fern Green-VY LT
	2	DMC	610	Drab Brown-DK
	2	DMC	632	Desert Sand-UL VY DK
	2	DMC	640	Beige Gray-VY DK
	2	DMC	648	Beaver Gray-LT
	2	DMC	728	Topaz
	2	DMC	729	Old Gold-MD
	2	DMC	730	Olive Green-VY DK
	2	DMC	732	Olive Green
	2	DMC	733	Olive Green-MD
	2	DMC	738	Tan-VY LT
	2	DMC	762	Pearl Gray-VY LT
	2	DMC	775	Baby Blue-VY LT
	2	DMC	779	Cocoa-DK
	2	DMC	782	Topaz-DK
	2	DMC	792	Cornflower Blue-DK
	2	DMC	800	Delft Blue-Pale
	2	DMC	801	Coffee Brown-DK
	2	DMC	809	Delft Blue
	2	DMC	823	Navy Blue-DK
	2	DMC	831	Golden Olive-MD
	2	DMC	832	Golden Olive
	2	DMC	833	Golden Olive-LT
	2	DMC	844	Beaver Brown-UL DK
	2	DMC	898	Coffee Brown-VY DK
	2	DMC	930	Antique Blue-DK

Symbol	Strands	Type	Number	Color	
	1	2	DMC	936	Avocado Green-VY DK
	#	2	DMC	938	Coffee Brown-UL DK
	中	2	DMC	950	Desert Sand-LT
	♣	2	DMC	975	Golden Brown-DK
	☾	2	DMC	3012	Khaki Green-MD
	⊕	2	DMC	3031	Mocha Brown-VY DK
	@	2	DMC	3042	Antique Violet-LT
	❖	2	DMC	3045	Yellow Beige-DK
	//	2	DMC	3064	Desert Sand
	●	2	DMC	3371	Black Brown
	III	2	DMC	3743	Antique Violet-VY LT
	n	2	DMC	3747	Blue Violet-VY LT
	O	2	DMC	3770	Tawny-VY LT
	∞	2	DMC	3771	Terra Cotta-UL VY LT
	♠	2	DMC	3772	Desert Sand-VY DK
	+	2	DMC	3790	Beige Gray-UL DK
		2	DMC	3799	Pewter Gray-VY DK
	φ	2	DMC	3807	Cornflower Blue
	⊕	2	DMC	3819	Moss Green-LT
	·-·	2	DMC	3820	Straw-DK
		2	DMC	3821	Straw
		2	DMC	3827	Golden Brown-Pale
	\$	2	DMC	3828	Hazelnut Brown
	δ	2	DMC	3839	Lavender Blue-MD
	⊕	2	DMC	3840	Lavender Blue-LT
	<	2	DMC	3856	Mahogany-UL VY LT
		2	DMC	3860	Cocoa
		2	DMC	3861	Cocoa-LT
		2	DMC	3862	Mocha Beige-DK
	=	2	DMC	3863	Mocha Beige-MD
	v	2	DMC	3865	Winter White

Notes:

The middle of this pattern can be found on page 9 and is 151 stitches across and 106 stitches down.

Pattern layout using page numbers in top left.

```

1 2 3 4 5 6
7 8 9 10 11 12
13 14 15 16 17 18
19 20 21 22 23 24

```

Usage Summary

Strands Per Skein: 6

Skein Length: 313.0 in

Type	Number	Full	Half	Quarter	Petite	Back(in)	Str(in)	Spec(in)	French	Bead	Skein Est.
DMC 158	158	651	0	0	0	0.0	0.0	0.0	0	0	1.000
DMC 159	159	236	0	0	0	0.0	0.0	0.0	0	0	1.000
DMC 160	160	536	0	0	0	0.0	0.0	0.0	0	0	1.000
DMC 161	161	518	0	0	0	0.0	0.0	0.0	0	0	1.000
DMC 166	166	315	0	0	0	0.0	0.0	0.0	0	0	1.000
DMC 224	224	109	0	0	0	0.0	0.0	0.0	0	0	1.000
DMC 225	225	123	0	0	0	0.0	0.0	0.0	0	0	1.000
DMC 300	300	337	0	0	0	0.0	0.0	0.0	0	0	1.000
DMC 310	310	8322	0	0	0	0.0	0.0	0.0	0	0	5.000
DMC 317	317	1546	0	0	0	0.0	0.0	0.0	0	0	1.000
DMC 318	318	524	0	0	0	0.0	0.0	0.0	0	0	1.000
DMC 336	336	651	0	0	0	0.0	0.0	0.0	0	0	1.000
DMC 340	340	260	0	0	0	0.0	0.0	0.0	0	0	1.000
DMC 370	370	373	0	0	0	0.0	0.0	0.0	0	0	1.000
DMC 407	407	971	0	0	0	0.0	0.0	0.0	0	0	1.000
DMC 413	413	699	0	0	0	0.0	0.0	0.0	0	0	1.000
DMC 414	414	1296	0	0	0	0.0	0.0	0.0	0	0	1.000
DMC 436	436	98	0	0	0	0.0	0.0	0.0	0	0	1.000
DMC 453	453	114	0	0	0	0.0	0.0	0.0	0	0	1.000
DMC 524	524	168	0	0	0	0.0	0.0	0.0	0	0	1.000
DMC 610	610	1263	0	0	0	0.0	0.0	0.0	0	0	1.000
DMC 632	632	656	0	0	0	0.0	0.0	0.0	0	0	1.000
DMC 640	640	227	0	0	0	0.0	0.0	0.0	0	0	1.000
DMC 648	648	84	0	0	0	0.0	0.0	0.0	0	0	1.000
DMC 728	728	68	0	0	0	0.0	0.0	0.0	0	0	1.000
DMC 729	729	60	0	0	0	0.0	0.0	0.0	0	0	1.000
DMC 730	730	2074	0	0	0	0.0	0.0	0.0	0	0	2.000
DMC 732	732	1427	0	0	0	0.0	0.0	0.0	0	0	1.000
DMC 733	733	442	0	0	0	0.0	0.0	0.0	0	0	1.000
DMC 738	738	38	0	0	0	0.0	0.0	0.0	0	0	1.000
DMC 762	762	35	0	0	0	0.0	0.0	0.0	0	0	1.000
DMC 775	775	895	0	0	0	0.0	0.0	0.0	0	0	1.000
DMC 779	779	1408	0	0	0	0.0	0.0	0.0	0	0	1.000
DMC 782	782	98	0	0	0	0.0	0.0	0.0	0	0	1.000
DMC 792	792	94	0	0	0	0.0	0.0	0.0	0	0	1.000
DMC 800	800	768	0	0	0	0.0	0.0	0.0	0	0	1.000
DMC 801	801	955	0	0	0	0.0	0.0	0.0	0	0	1.000
DMC 809	809	1696	0	0	0	0.0	0.0	0.0	0	0	1.000
DMC 823	823	315	0	0	0	0.0	0.0	0.0	0	0	1.000
DMC 831	831	689	0	0	0	0.0	0.0	0.0	0	0	1.000
DMC 832	832	535	0	0	0	0.0	0.0	0.0	0	0	1.000
DMC 833	833	197	0	0	0	0.0	0.0	0.0	0	0	1.000
DMC 844	844	298	0	0	0	0.0	0.0	0.0	0	0	1.000
DMC 898	898	2098	0	0	0	0.0	0.0	0.0	0	0	2.000
DMC 930	930	247	0	0	0	0.0	0.0	0.0	0	0	1.000
DMC 936	936	954	0	0	0	0.0	0.0	0.0	0	0	1.000
DMC 938	938	5707	0	0	0	0.0	0.0	0.0	0	0	4.000
DMC 950	950	68	0	0	0	0.0	0.0	0.0	0	0	1.000
DMC 975	975	97	0	0	0	0.0	0.0	0.0	0	0	1.000
DMC 3012	3012	467	0	0	0	0.0	0.0	0.0	0	0	1.000
DMC 3031	3031	1996	0	0	0	0.0	0.0	0.0	0	0	2.000

Type	Number	Full	Half	Quarter	Petite	Back(in)	Str(in)	Spec(in)	French	Bead	Skein	Est.
DMC	3042	659	0	0	0	0.0	0.0	0.0	0	0	1.000	
DMC	3045	203	0	0	0	0.0	0.0	0.0	0	0	1.000	
DMC	3064	222	0	0	0	0.0	0.0	0.0	0	0	1.000	
DMC	3371	7178	0	0	0	0.0	0.0	0.0	0	0	4.000	
DMC	3743	262	0	0	0	0.0	0.0	0.0	0	0	1.000	
DMC	3747	1263	0	0	0	0.0	0.0	0.0	0	0	1.000	
DMC	3770	45	0	0	0	0.0	0.0	0.0	0	0	1.000	
DMC	3771	88	0	0	0	0.0	0.0	0.0	0	0	1.000	
DMC	3772	866	0	0	0	0.0	0.0	0.0	0	0	1.000	
DMC	3790	475	0	0	0	0.0	0.0	0.0	0	0	1.000	
DMC	3799	451	0	0	0	0.0	0.0	0.0	0	0	1.000	
DMC	3807	48	0	0	0	0.0	0.0	0.0	0	0	1.000	
DMC	3819	173	0	0	0	0.0	0.0	0.0	0	0	1.000	
DMC	3820	147	0	0	0	0.0	0.0	0.0	0	0	1.000	
DMC	3821	70	0	0	0	0.0	0.0	0.0	0	0	1.000	
DMC	3827	52	0	0	0	0.0	0.0	0.0	0	0	1.000	
DMC	3828	165	0	0	0	0.0	0.0	0.0	0	0	1.000	
DMC	3839	356	0	0	0	0.0	0.0	0.0	0	0	1.000	
DMC	3840	2198	0	0	0	0.0	0.0	0.0	0	0	2.000	
DMC	3856	24	0	0	0	0.0	0.0	0.0	0	0	1.000	
DMC	3860	1017	0	0	0	0.0	0.0	0.0	0	0	1.000	
DMC	3861	788	0	0	0	0.0	0.0	0.0	0	0	1.000	
DMC	3862	1132	0	0	0	0.0	0.0	0.0	0	0	1.000	
DMC	3863	770	0	0	0	0.0	0.0	0.0	0	0	1.000	
DMC	3865	545	0	0	0	0.0	0.0	0.0	0	0	1.000	