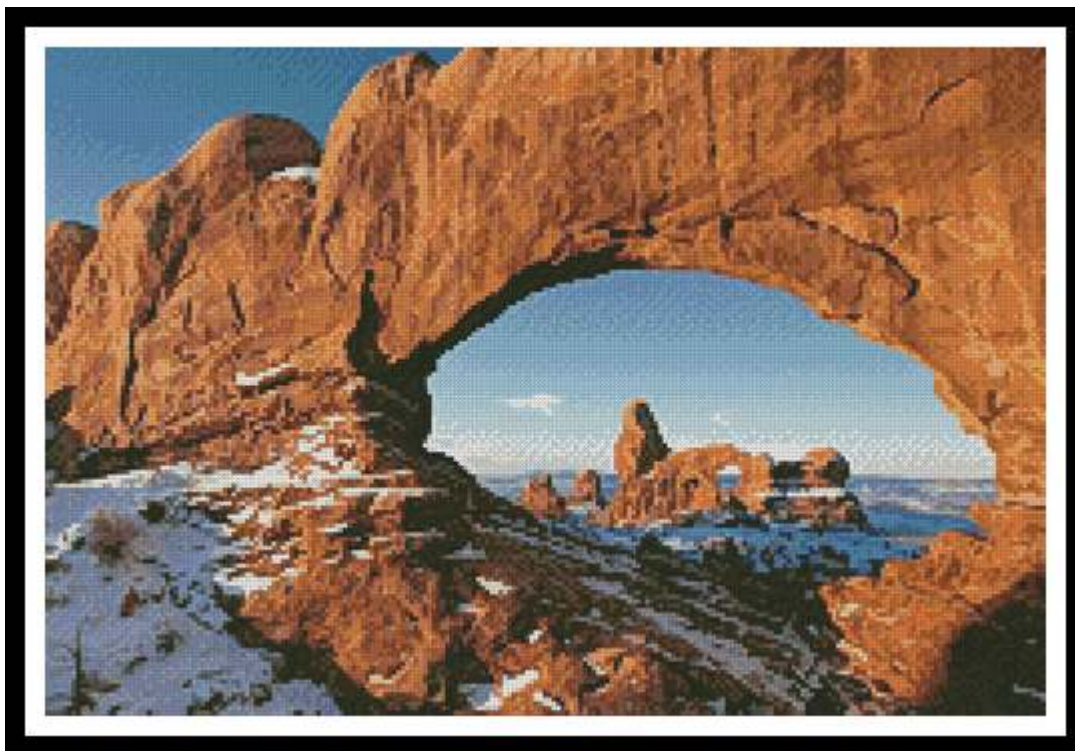


Turret Arch (Crop)



* Original image Copyright of Skeeze - Pixabay.
Cross Stitch Design by Tereena Clarke.

Completed Size = 225w x 150h Stitches

14 Count, 16.5w x 11h inches (42cm x 28cm)

16 Count, 14.5w x 9.5h inches (37cm x 24cm)

18 Count, 12.5w x 8.5h inches (32cm x 22cm)

Uses 58 DMC cotton colours. Only full cross stitches are used in this pattern.

Pattern Instructions

* This pattern can be worked on any fabric type, colour or count you prefer. To work out the size of the finished article, take the number of stitches wide and high and divide it by the count of your fabric (e.g. 14,16,18 count aida etc) to get the size in inches. Times it by 2.54 to get centimetres. We have the sizes in inches shown on the previous page. Also leave at least a few inches of fabric around each side of the design to assist in framing. The higher the fabric count the smaller the completed project will be.

* To put the pattern together look in the top and bottom corners. The page numbers in brackets show which page number it joins up to. Page 1 always starts at the top left hand side of the pattern. Our pages also have a shaded grey section. This indicates a 3 row overlap from adjoining pages to assist with reading the pattern. PLEASE DO NOT RESTITCH THIS AREA.

* You should begin at the centre of the pattern. To find the centre of the pattern it is just a matter of laying the pattern out and locating the arrows at the top and left hand side of the patterns, they are determined by dividing the stitch numbers wide and high in half. Where the two points meet in the middle, that is the centre.

* If you need more assistance to find the middle of your pattern or the page layout, please see the notes section on the colour symbol chart. The easiest way to stitch this pattern, as it has multiple pages, is to stitch one page at a time.

* We suggest using two strands of floss for each stitch and one strand for backstitching if the pattern calls for it.

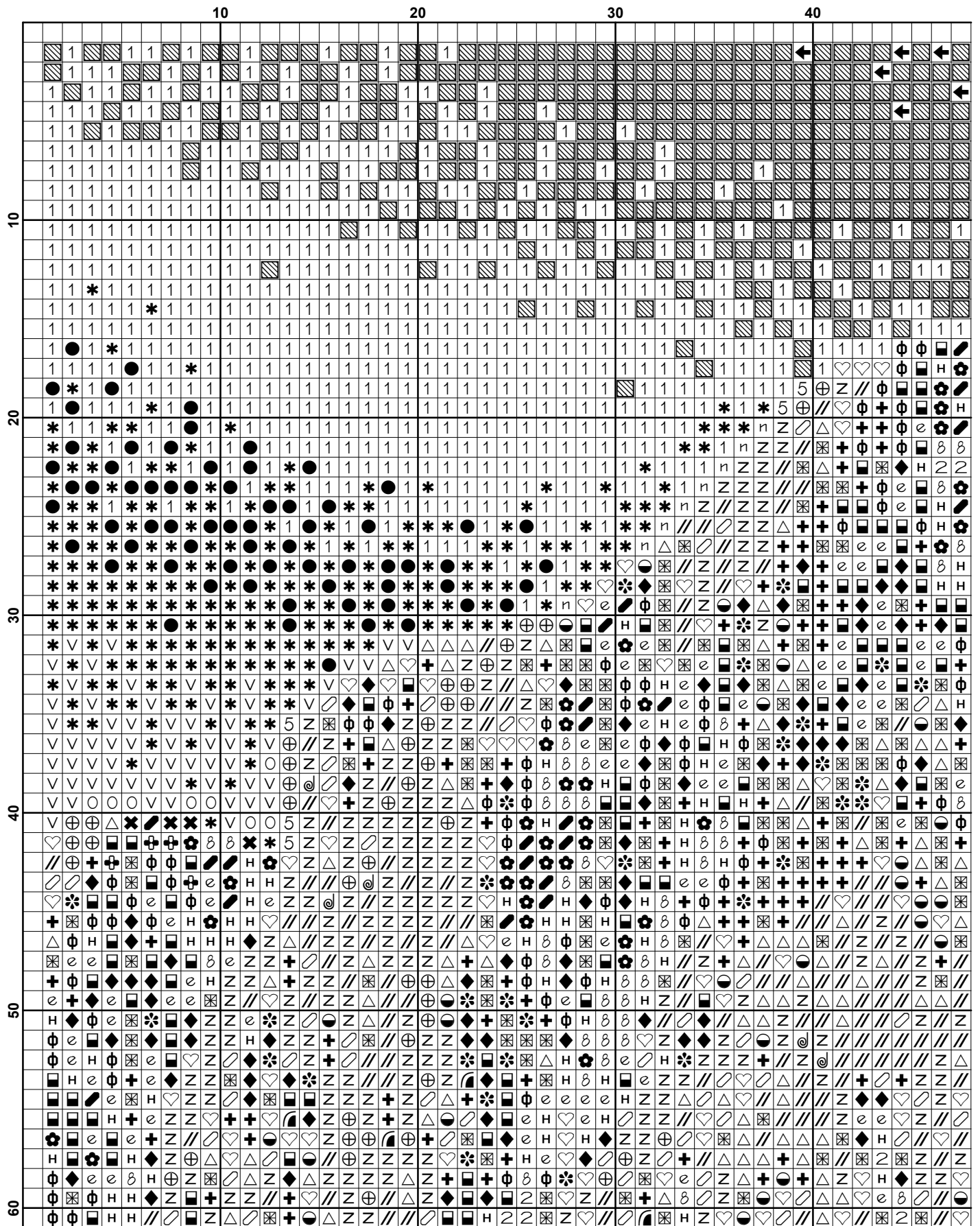
We hope you enjoy stitching our pattern.

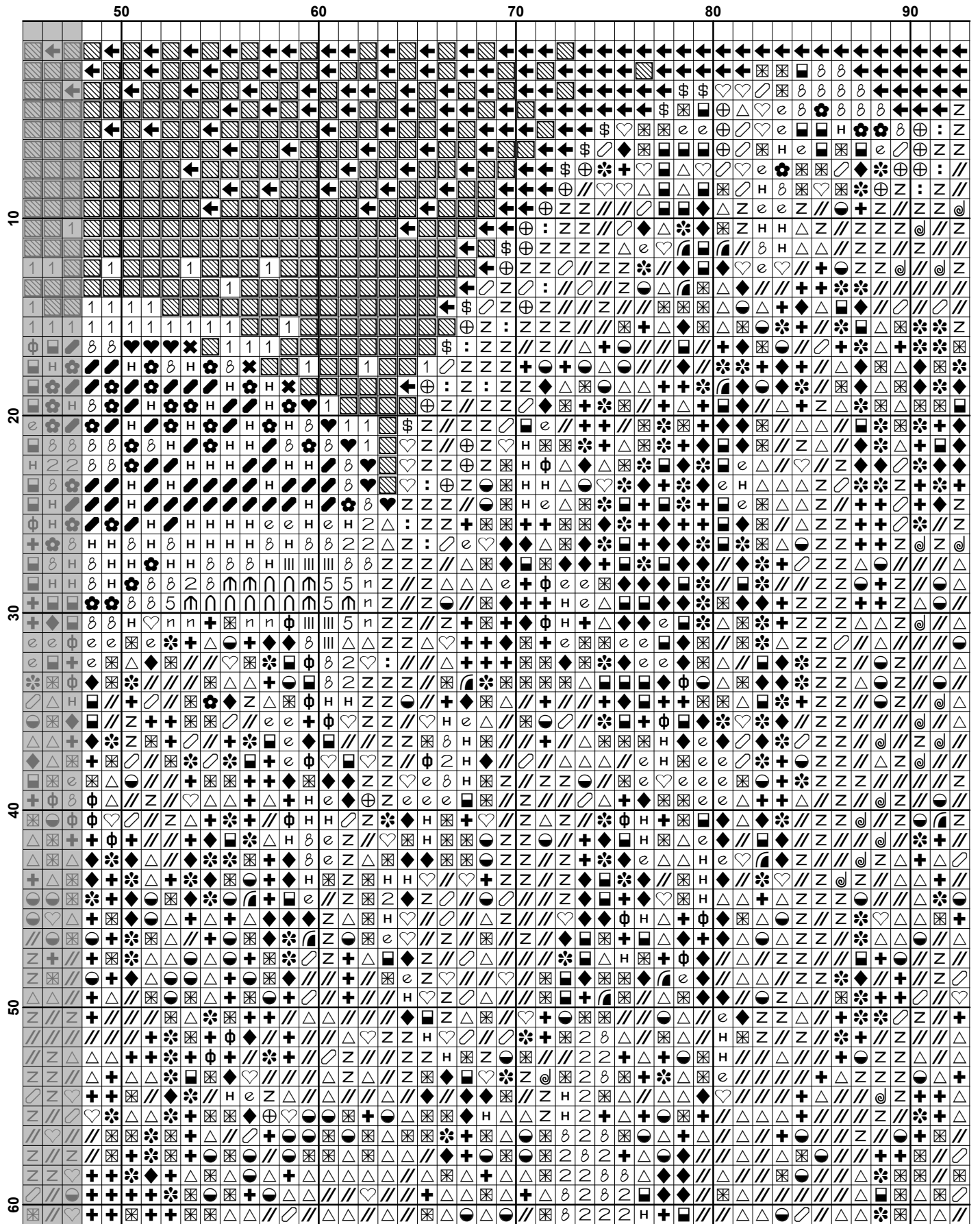
Thanks and Best Wishes
Tereena Clarke

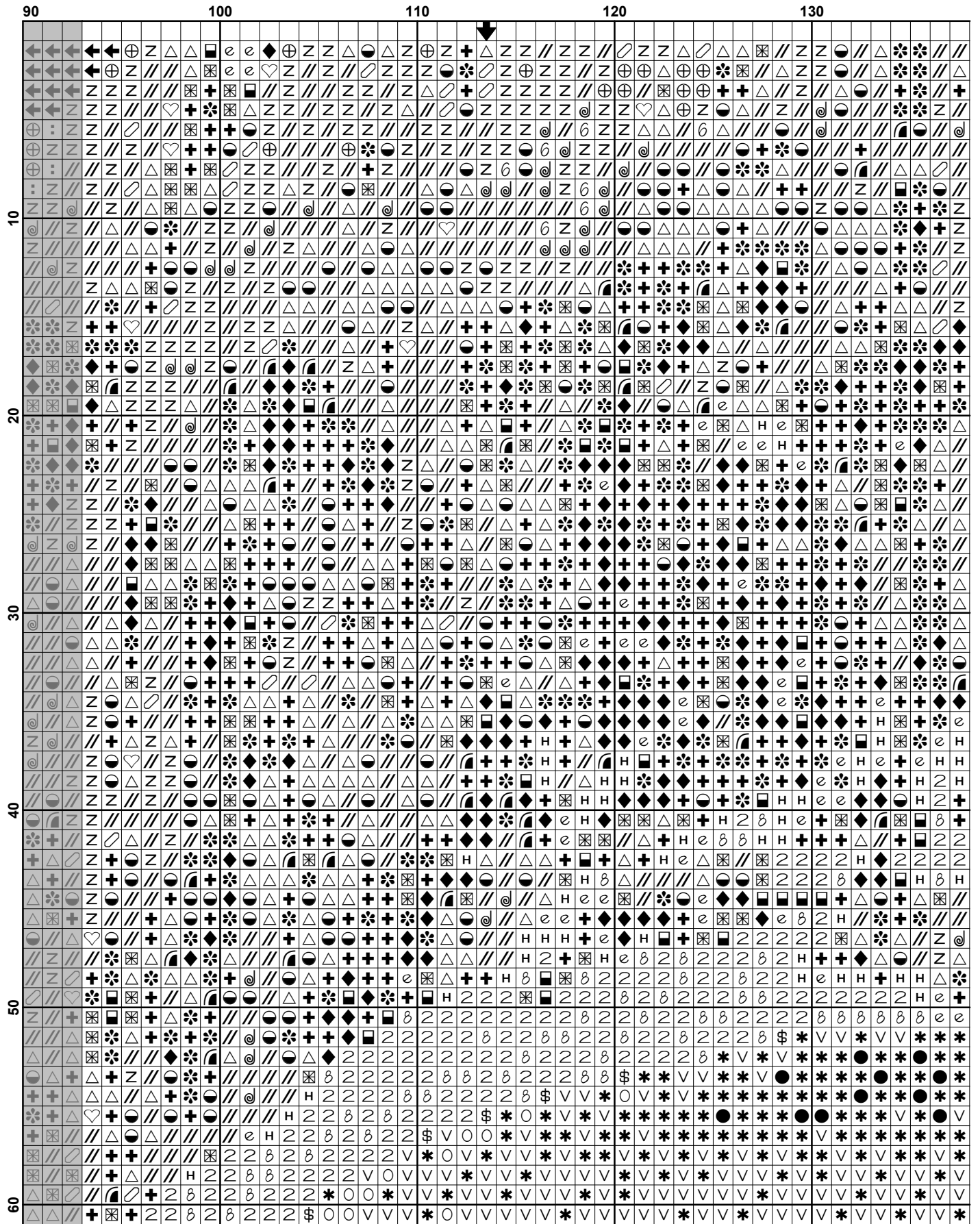
Artecy Cross Stitch
Po Box 3474
Tuggerah, NSW 2259
Australia

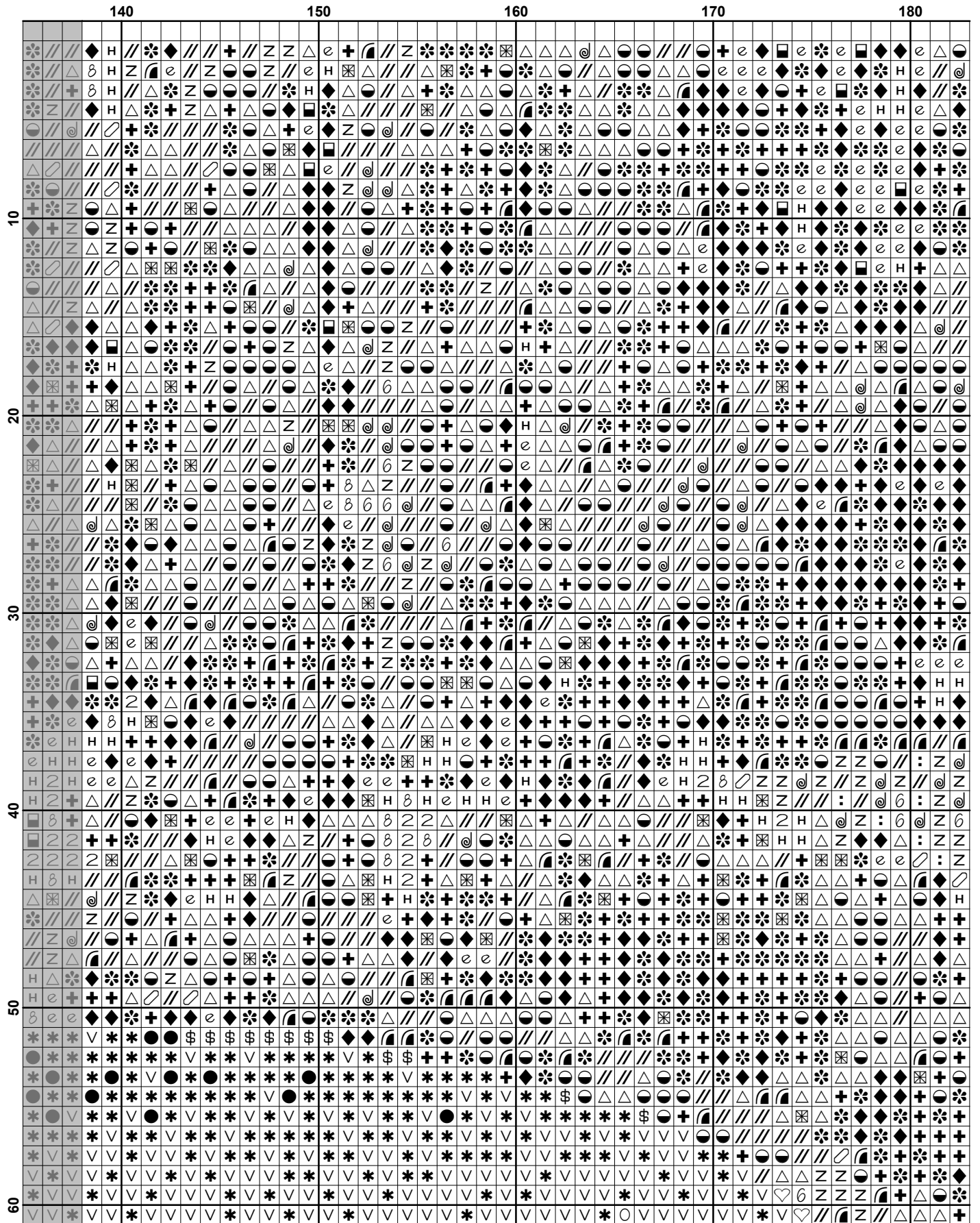
Websites: www.artecy.com and www.artecyshop.com
Email: artecy@artecy.com or stitch@artecyshop.com

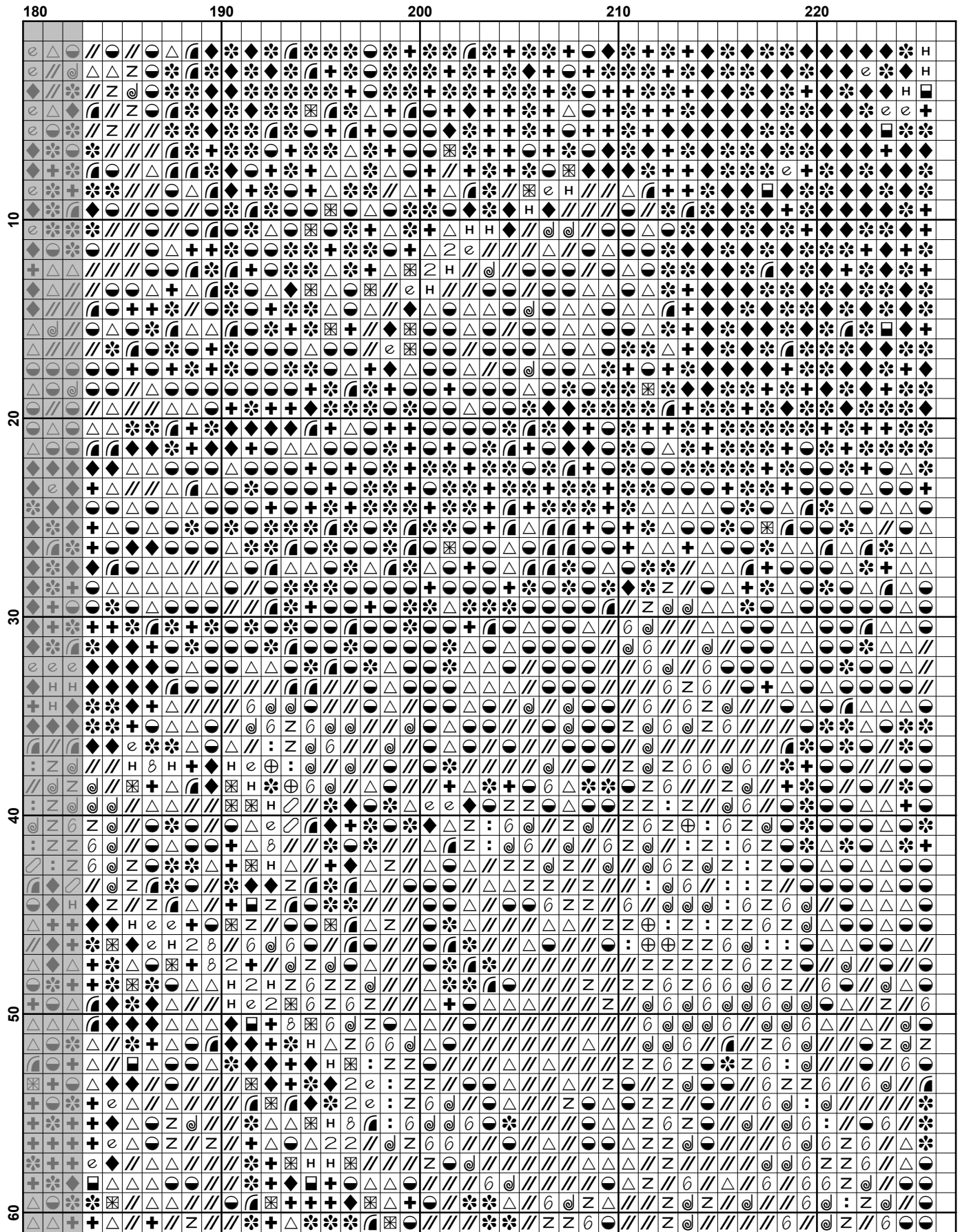
*Patterns are strictly for personal use only. It is against our copyright to make kits for sale from our designs or to sell, copy or redistribute this pattern in any form. You may not upload our patterns to any internet forums or groups or any other website. You may make 1 copy of this pattern for a working copy for your own personal use if needed.

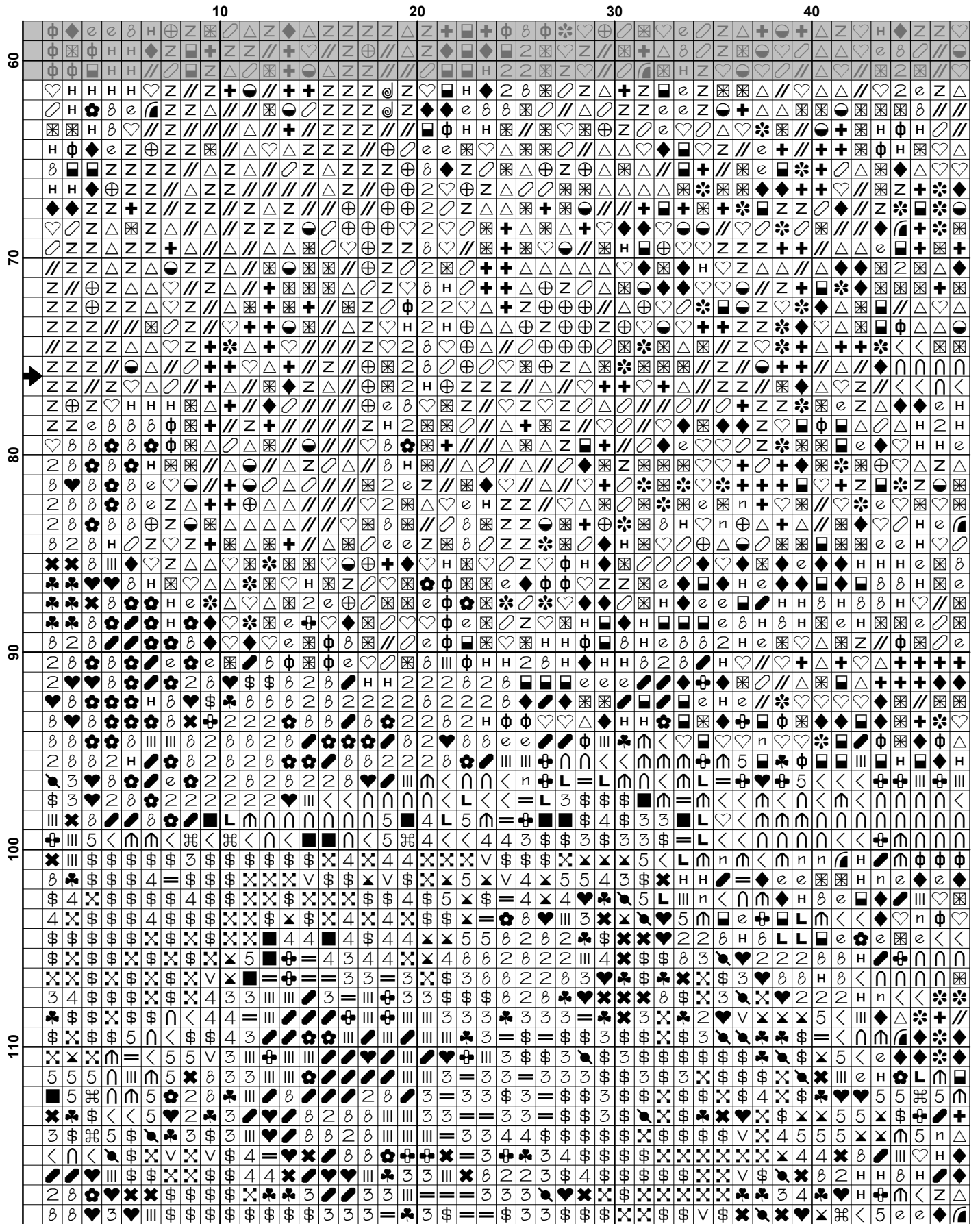


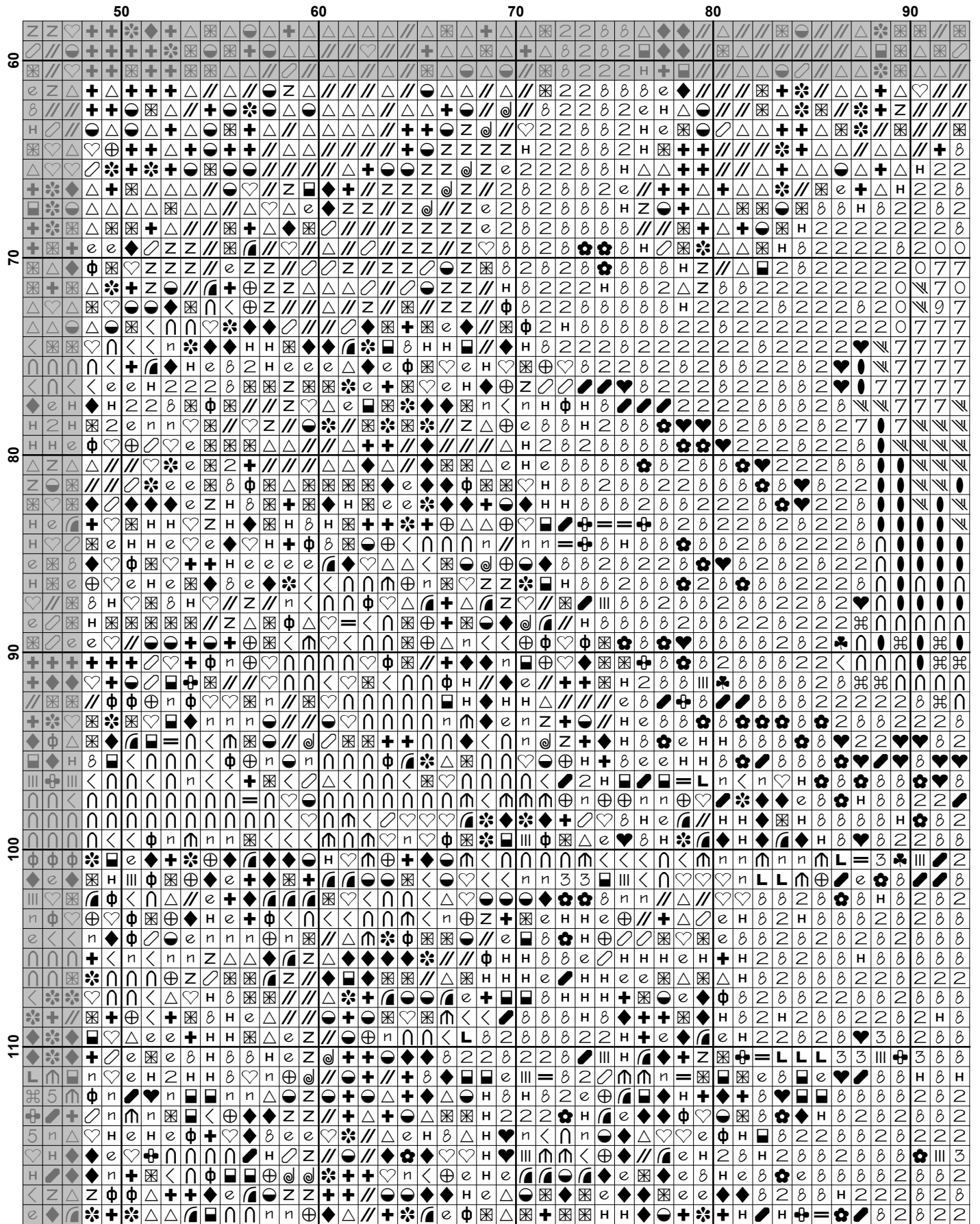


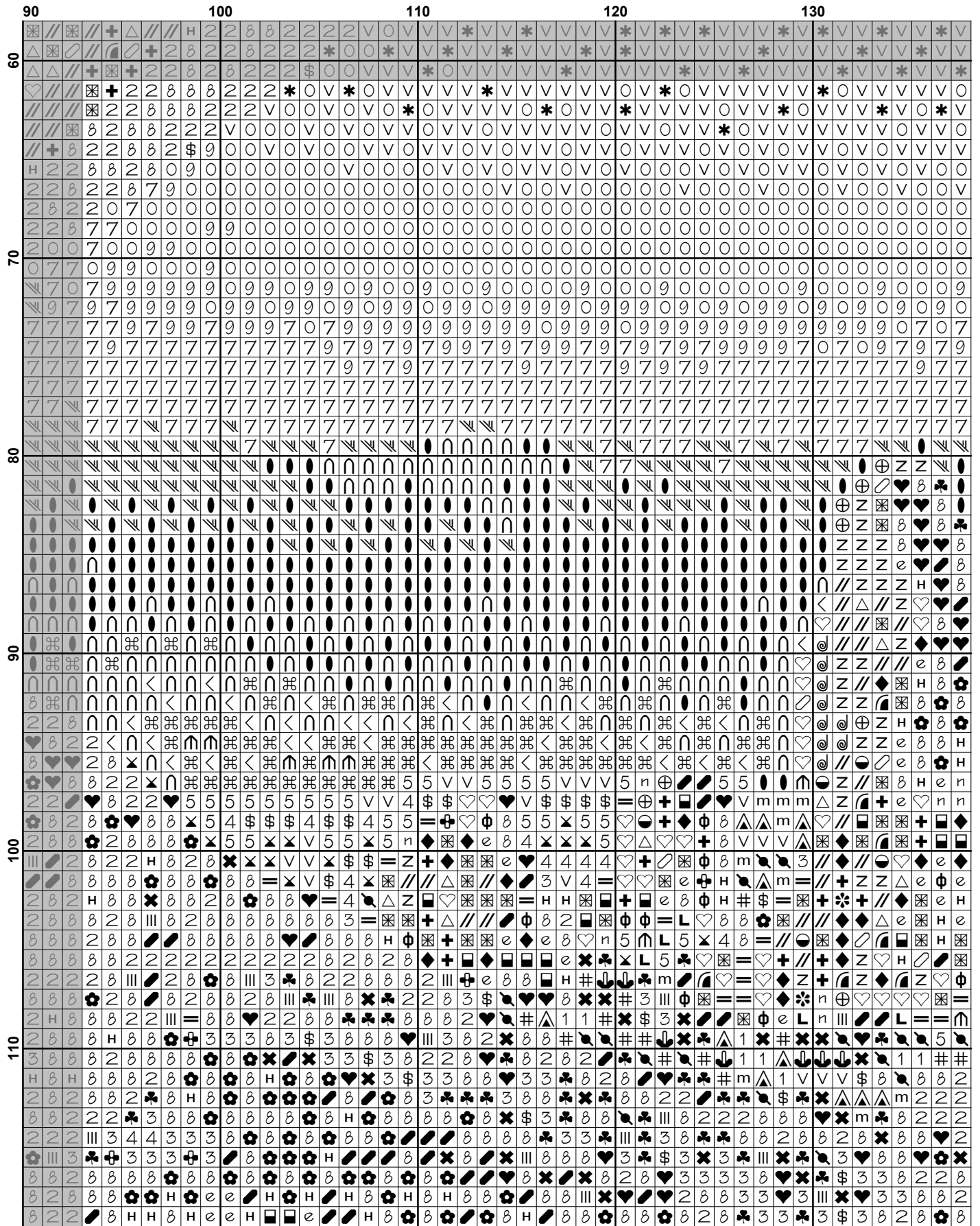


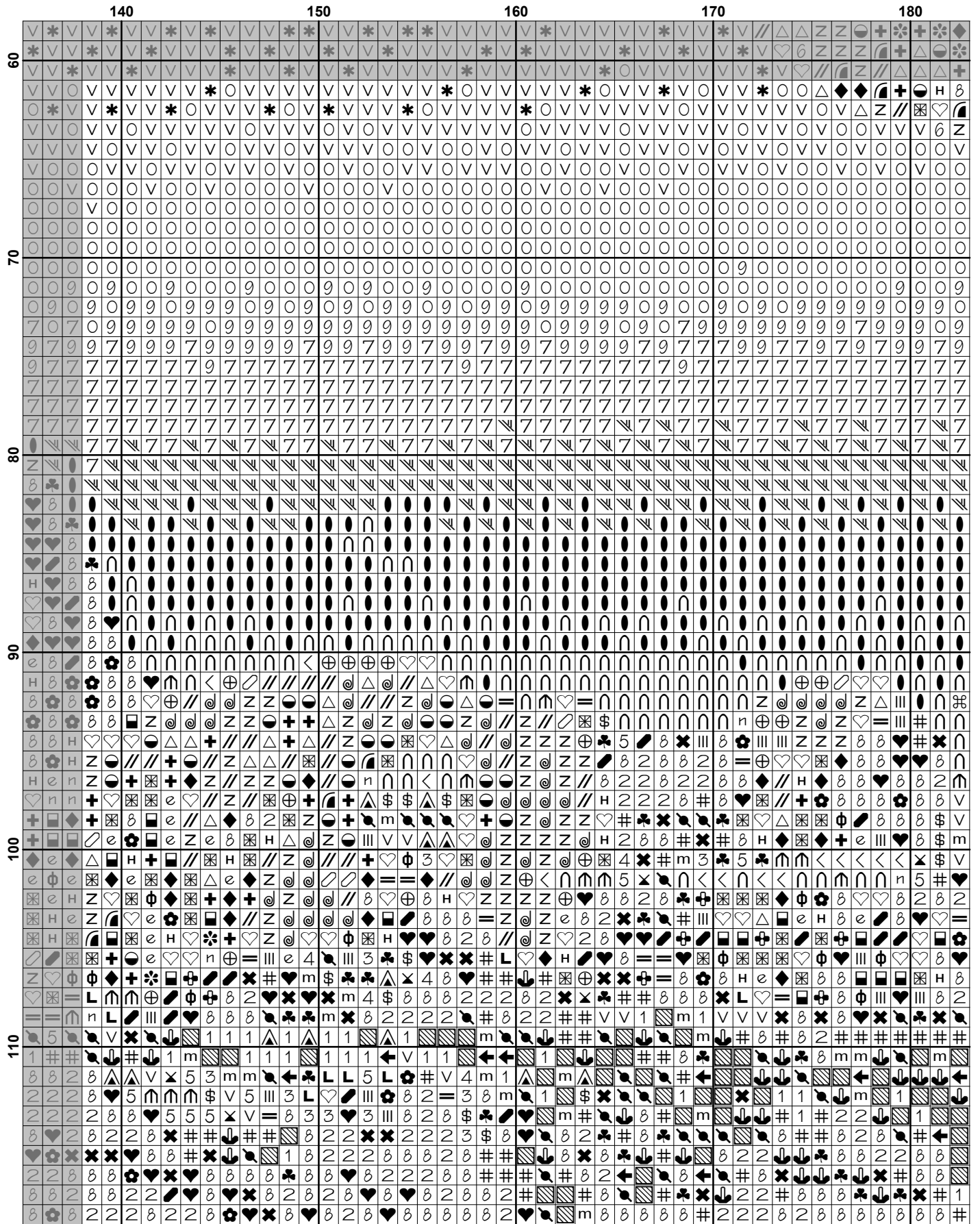


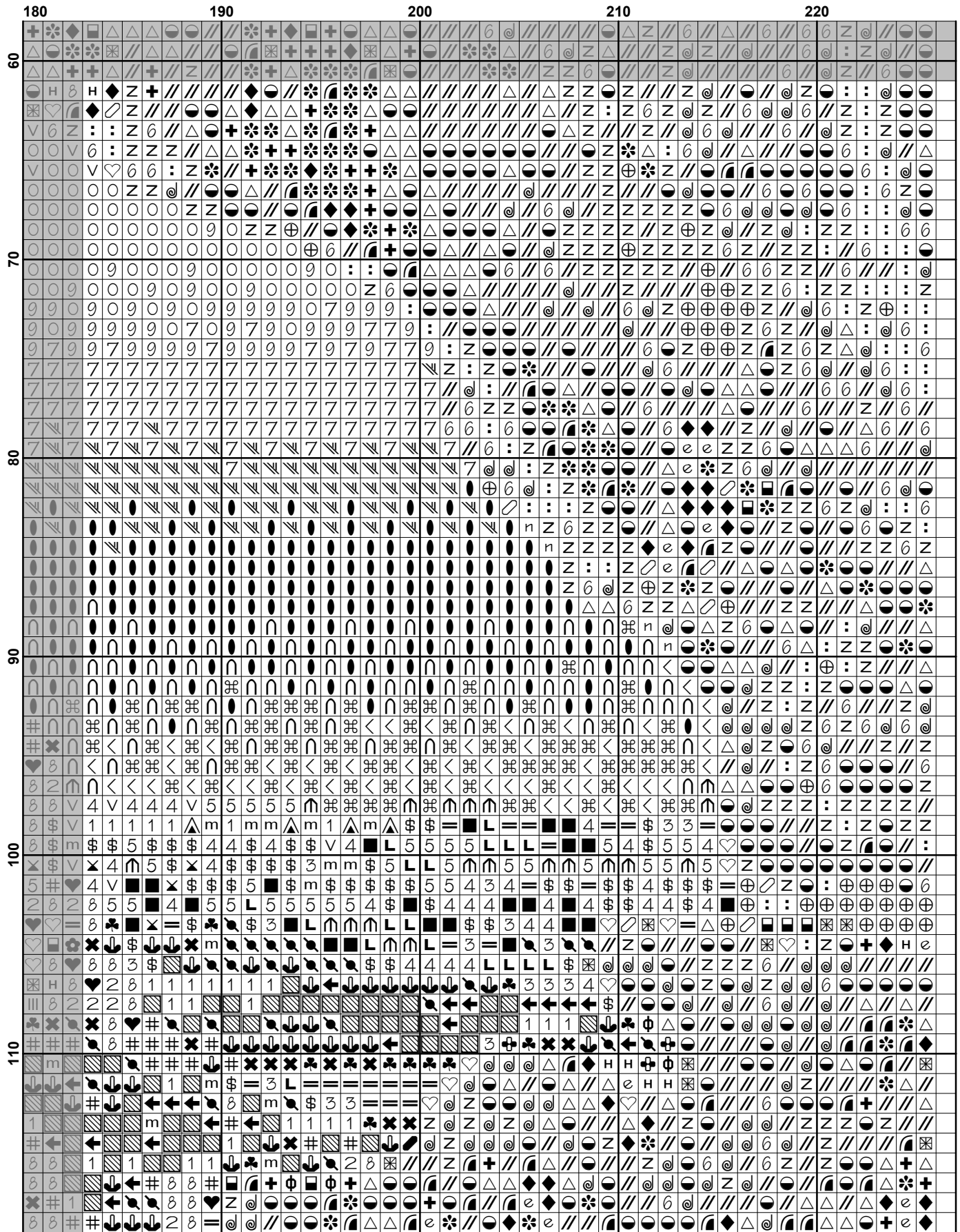


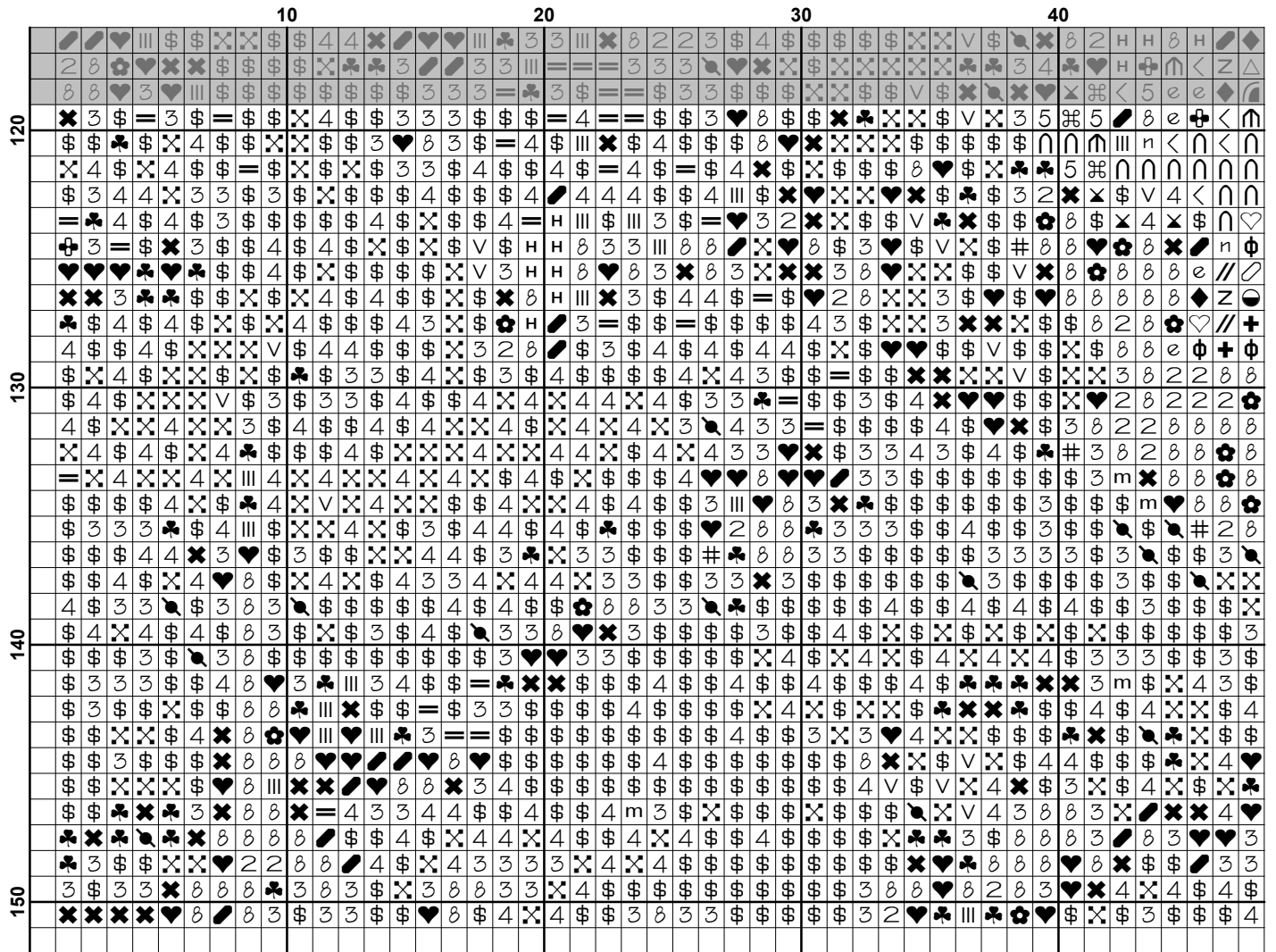


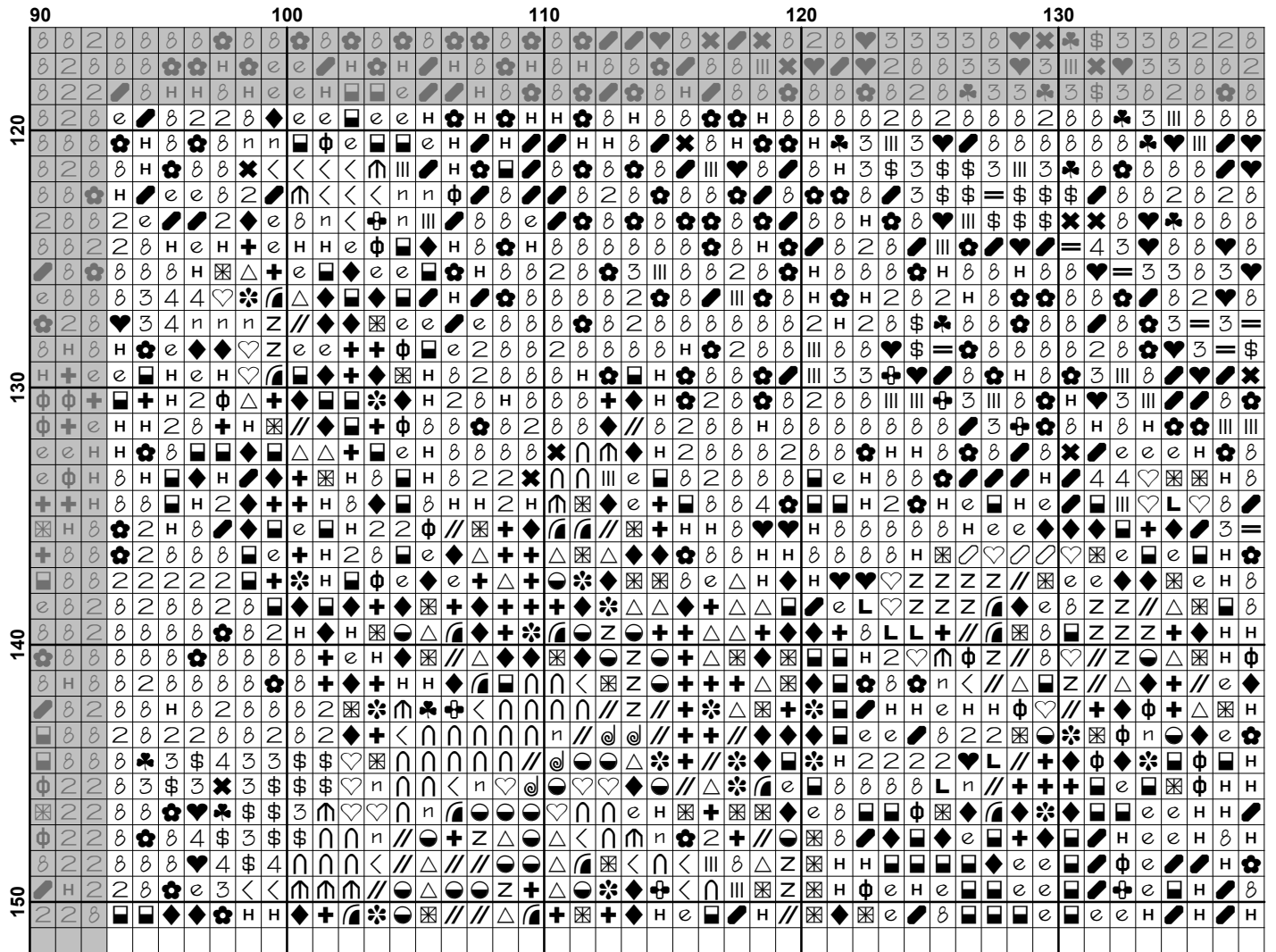


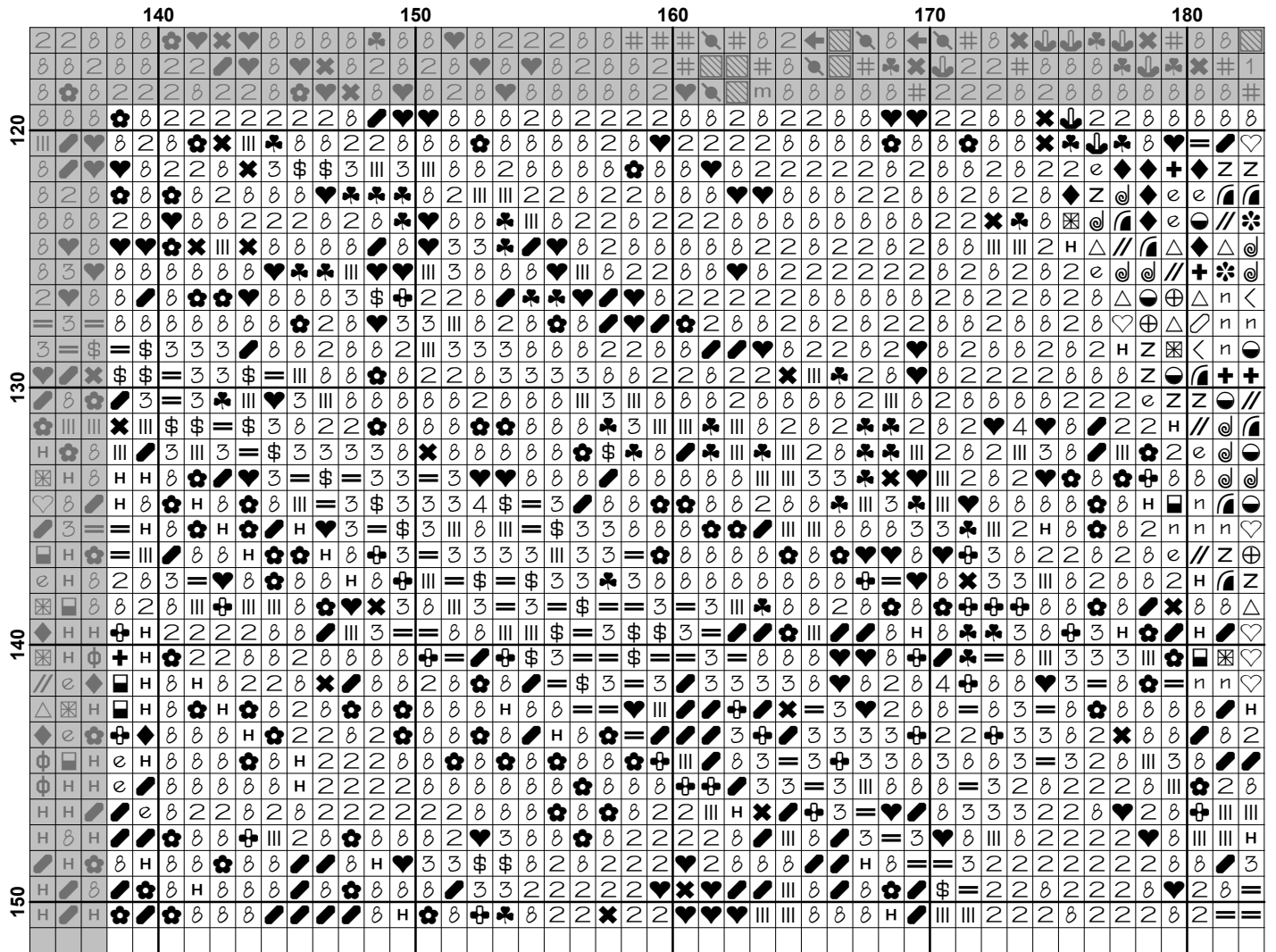
























	180	190	200	210	220
120	β β # 1	β β # β β #	β β # β β #	β β # β β #	β β # β β #
130	β β # β β #	β β # β β #	β β # β β #	β β # β β #	β β # β β #
140	β β # β β #	β β # β β #	β β # β β #	β β # β β #	β β # β β #
150	β β # β β #	β β # β β #	β β # β β #	β β # β β #	β β # β β #

Pattern Name: Turret Arch (Crop)
Designed By: Photo by Skeeze - Pixabay
Company: Artecy Cross Stitch
Copyright: Copyright Artecy Cross Stitch. All rights Reserved.
Fabric: Aida 14, White
 225w X 150h Stitches
Size(s): 14 Count, 16w X 10-5/8h in
 16 Count, 14w X 9-3/8h in
 18 Count, 12-1/2w X 8-1/4h in

Floss Used for Full Stitches:

Symbol	Strands	Type	Number	Color
	2	DMC	156	Blue Violet-MD LT
	2	DMC	159	Gray Blue-LT
	2	DMC	160	Gray Blue-MD
	2	DMC	161	Gray Blue
	2	DMC	162	Blue-UL VY LT
	2	DMC	301	Mahogany-MD
	2	DMC	310	Black
	2	DMC	317	Pewter Gray
	2	DMC	318	Steel Gray-LT
	2	DMC	334	Baby Blue-MD
	2	DMC	336	Navy Blue
	2	DMC	356	Terra Cotta-MD
	2	DMC	402	Mahogany-VY LT
	2	DMC	413	Pewter Gray-DK
	2	DMC	414	Steel Gray-DK
	2	DMC	415	Pearl Gray
	2	DMC	452	Shell Gray-MD
	2	DMC	517	Wedgewood-DK
	2	DMC	518	Wedgewood-LT
	2	DMC	519	Sky Blue
	2	DMC	721	Orange Spice-MD
	2	DMC	722	Orange Spice-LT
	2	DMC	762	Pearl Gray-VY LT
	2	DMC	775	Baby Blue-VY LT
	2	DMC	779	Cocoa-DK
	2	DMC	799	Delft Blue-MD
	2	DMC	813	Blue-LT
	2	DMC	825	Blue-DK
	2	DMC	826	Blue-MD
	2	DMC	827	Blue-VY LT
	2	DMC	838	Beige Brown-VY DK
	2	DMC	902	Garnet-VY DK
	2	DMC	918	Red Copper-DK
	2	DMC	920	Copper-MD
	2	DMC	921	Copper
	2	DMC	922	Copper-LT
	2	DMC	945	Tawny
	2	DMC	3042	Antique Violet-LT
	2	DMC	3072	Beaver Gray-VY LT
	2	DMC	3325	Baby Blue-LT
	2	DMC	3371	Black Brown
	2	DMC	3740	Antique Violet-DK
	2	DMC	3760	Wedgewood-MD
	2	DMC	3770	Tawny-VY LT
	2	DMC	3772	Desert Sand-VY DK
	2	DMC	3776	Mahogany-LT

Symbol	Strands	Type	Number	Color
	♡	2	DMC 3778	Terra Cotta-LT
	♥	2	DMC 3799	Pewter Gray-VY DK
	m	2	DMC 3807	Cornflower Blue
	⊕	2	DMC 3825	Pumpkin-Pale
	+	2	DMC 3830	Terra Cotta-MD
	6	2	DMC 3853	Autumn Gold-DK
	:	2	DMC 3854	Autumn Gold-MD
	e	2	DMC 3857	Rosewood-DK
	■	2	DMC 3858	Rosewood-MD
	⊕	2	DMC 3860	Cocoa
	=	2	DMC 3861	Cocoa-LT
	∩	2	DMC 3865	Winter White

Notes:

The middle of this pattern can be found on page 8 and is 114 stitches across and 76 stitches down.

Pattern layout using page numbers in top left.

```

1  2  3  4  5
6  7  8  9 10
11 12 13 14 15







```

Usage Summary

Strands Per Skein: 6

Skein Length: 313.0 in

Type	Number	Full	Half	Quarter	Petite	Back(in)	Str(in)	Spec(in)	French	Bead	Skein Est.
DMC 156	156	253	0	0	0	0.0	0.0	0.0	0	0	1.000
DMC 159	159	60	0	0	0	0.0	0.0	0.0	0	0	1.000
DMC 160	160	954	0	0	0	0.0	0.0	0.0	0	0	1.000
DMC 161	161	134	0	0	0	0.0	0.0	0.0	0	0	1.000
DMC 162	162	366	0	0	0	0.0	0.0	0.0	0	0	1.000
DMC 301	301	1436	0	0	0	0.0	0.0	0.0	0	0	1.000
DMC 310	310	1455	0	0	0	0.0	0.0	0.0	0	0	1.000
DMC 317	317	227	0	0	0	0.0	0.0	0.0	0	0	1.000
DMC 318	318	293	0	0	0	0.0	0.0	0.0	0	0	1.000
DMC 334	334	28	0	0	0	0.0	0.0	0.0	0	0	1.000
DMC 336	336	101	0	0	0	0.0	0.0	0.0	0	0	1.000
DMC 356	356	1200	0	0	0	0.0	0.0	0.0	0	0	1.000
DMC 402	402	306	0	0	0	0.0	0.0	0.0	0	0	1.000
DMC 413	413	222	0	0	0	0.0	0.0	0.0	0	0	1.000
DMC 414	414	547	0	0	0	0.0	0.0	0.0	0	0	1.000
DMC 415	415	132	0	0	0	0.0	0.0	0.0	0	0	1.000
DMC 452	452	60	0	0	0	0.0	0.0	0.0	0	0	1.000
DMC 517	517	180	0	0	0	0.0	0.0	0.0	0	0	1.000
DMC 518	518	90	0	0	0	0.0	0.0	0.0	0	0	1.000
DMC 519	519	736	0	0	0	0.0	0.0	0.0	0	0	1.000
DMC 721	721	502	0	0	0	0.0	0.0	0.0	0	0	1.000
DMC 722	722	1372	0	0	0	0.0	0.0	0.0	0	0	1.000
DMC 762	762	190	0	0	0	0.0	0.0	0.0	0	0	1.000
DMC 775	775	750	0	0	0	0.0	0.0	0.0	0	0	1.000
DMC 779	779	411	0	0	0	0.0	0.0	0.0	0	0	1.000
DMC 799	799	486	0	0	0	0.0	0.0	0.0	0	0	1.000
DMC 813	813	608	0	0	0	0.0	0.0	0.0	0	0	1.000
DMC 825	825	80	0	0	0	0.0	0.0	0.0	0	0	1.000
DMC 826	826	707	0	0	0	0.0	0.0	0.0	0	0	1.000
DMC 827	827	554	0	0	0	0.0	0.0	0.0	0	0	1.000
DMC 838	838	459	0	0	0	0.0	0.0	0.0	0	0	1.000
DMC 902	902	917	0	0	0	0.0	0.0	0.0	0	0	1.000
DMC 918	918	1476	0	0	0	0.0	0.0	0.0	0	0	1.000
DMC 920	920	449	0	0	0	0.0	0.0	0.0	0	0	1.000
DMC 921	921	1736	0	0	0	0.0	0.0	0.0	0	0	1.000
DMC 922	922	2446	0	0	0	0.0	0.0	0.0	0	0	2.000
DMC 945	945	151	0	0	0	0.0	0.0	0.0	0	0	1.000
DMC 3042	3042	38	0	0	0	0.0	0.0	0.0	0	0	1.000
DMC 3072	3072	126	0	0	0	0.0	0.0	0.0	0	0	1.000
DMC 3325	3325	264	0	0	0	0.0	0.0	0.0	0	0	1.000
DMC 3371	3371	2457	0	0	0	0.0	0.0	0.0	0	0	2.000
DMC 3740	3740	230	0	0	0	0.0	0.0	0.0	0	0	1.000
DMC 3760	3760	733	0	0	0	0.0	0.0	0.0	0	0	1.000
DMC 3770	3770	264	0	0	0	0.0	0.0	0.0	0	0	1.000
DMC 3772	3772	252	0	0	0	0.0	0.0	0.0	0	0	1.000
DMC 3776	3776	1882	0	0	0	0.0	0.0	0.0	0	0	1.000
DMC 3778	3778	523	0	0	0	0.0	0.0	0.0	0	0	1.000
DMC 3799	3799	335	0	0	0	0.0	0.0	0.0	0	0	1.000
DMC 3807	3807	58	0	0	0	0.0	0.0	0.0	0	0	1.000
DMC 3825	3825	270	0	0	0	0.0	0.0	0.0	0	0	1.000
DMC 3830	3830	1703	0	0	0	0.0	0.0	0.0	0	0	1.000
DMC 3853	3853	201	0	0	0	0.0	0.0	0.0	0	0	1.000

Type	Number	Full	Half	Quarter	Petite	Back(in)	Str(in)	Spec(in)	French	Bead	Skein	Est.
 DMC	3854	114	0	0	0	0.0	0.0	0.0	0	0	1.000	
 DMC	3857	764	0	0	0	0.0	0.0	0.0	0	0	1.000	
 DMC	3858	542	0	0	0	0.0	0.0	0.0	0	0	1.000	
 DMC	3860	101	0	0	0	0.0	0.0	0.0	0	0	1.000	
 DMC	3861	213	0	0	0	0.0	0.0	0.0	0	0	1.000	
 DMC	3865	606	0	0	0	0.0	0.0	0.0	0	0	1.000	