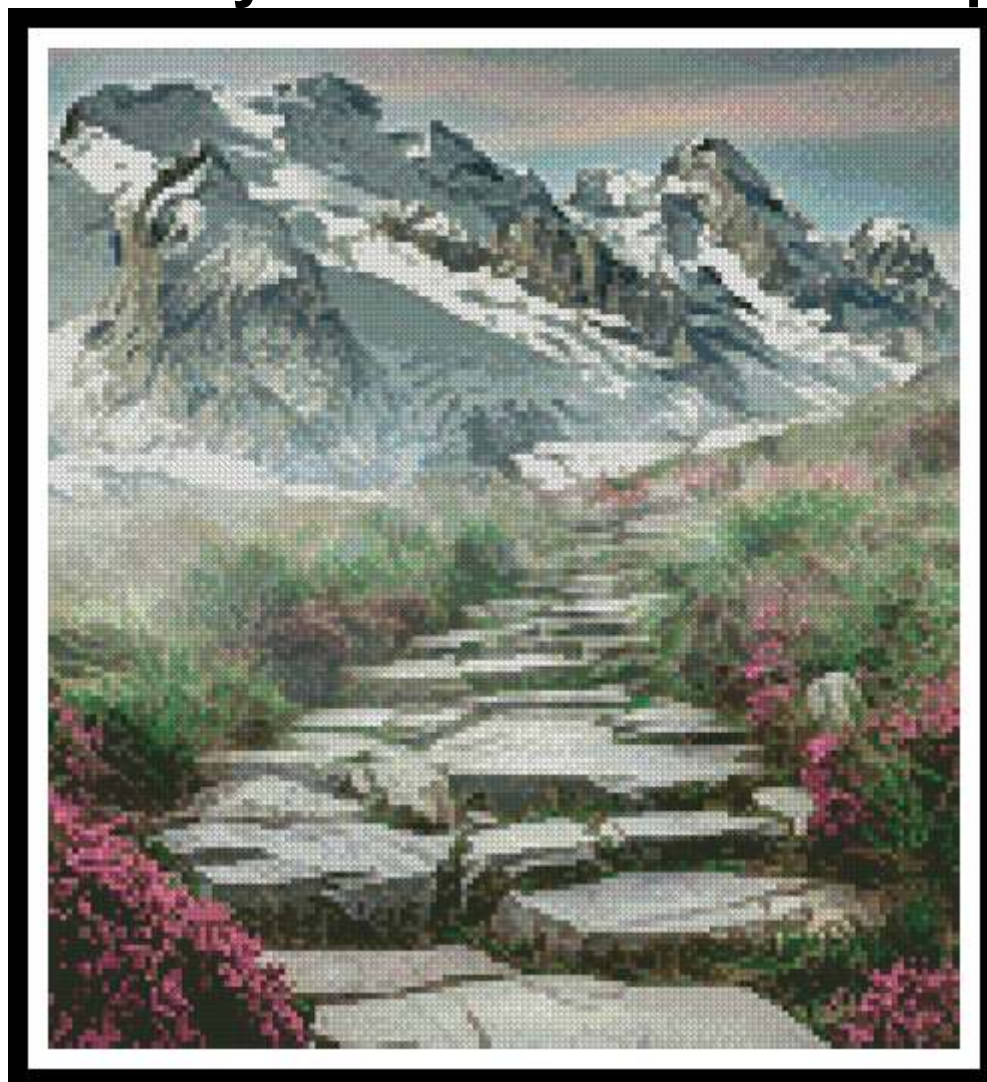


Stairway to the Mountains - Crop



* Original image© Komposita - Pixabay
Cross Stitch Design by Tereena Clarke.

Completed Size = 150w x 165h Stitches

14 Count, 11w x 12h inches (28cm x 30cm)

16 Count, 9.5w x 10.5h inches (24cm x 27cm)

18 Count, 8.5w x 9.5h inches (22cm x 24cm)

Uses 64 DMC cotton colours. Only full cross stitches are used in this pattern.

Pattern Instructions

* This pattern can be worked on any fabric type, colour or count you prefer. To work out the size of the finished article, take the number of stitches wide and high and divide it by the count of your fabric (e.g. 14,16,18 count aida etc) to get the size in inches. Times it by 2.54 to get centimetres. We have the sizes in inches shown on the previous page. Also leave at least a few inches of fabric around each side of the design to assist in framing. The higher the fabric count the smaller the completed project will be.

* To put the pattern together look in the top and bottom corners. The page numbers in brackets show which page number it joins up to. Page 1 always starts at the top left hand side of the pattern. Our pages also have a shaded grey section. This indicates a 3 row overlap from adjoining pages to assist with reading the pattern. PLEASE DO NOT RESTITCH THIS AREA.

* You should begin at the centre of the pattern. To find the centre of the pattern it is just a matter of laying the pattern out and locating the arrows at the top and left hand side of the patterns, they are determined by dividing the stitch numbers wide and high in half. Where the two points meet in the middle, that is the centre.

* If you need more assistance to find the middle of your pattern or the page layout, please see the notes section on the colour symbol chart. The easiest way to stitch this pattern, as it has multiple pages, is to stitch one page at a time.

* We suggest using two strands of floss for each stitch and one strand for backstitching if the pattern calls for it.

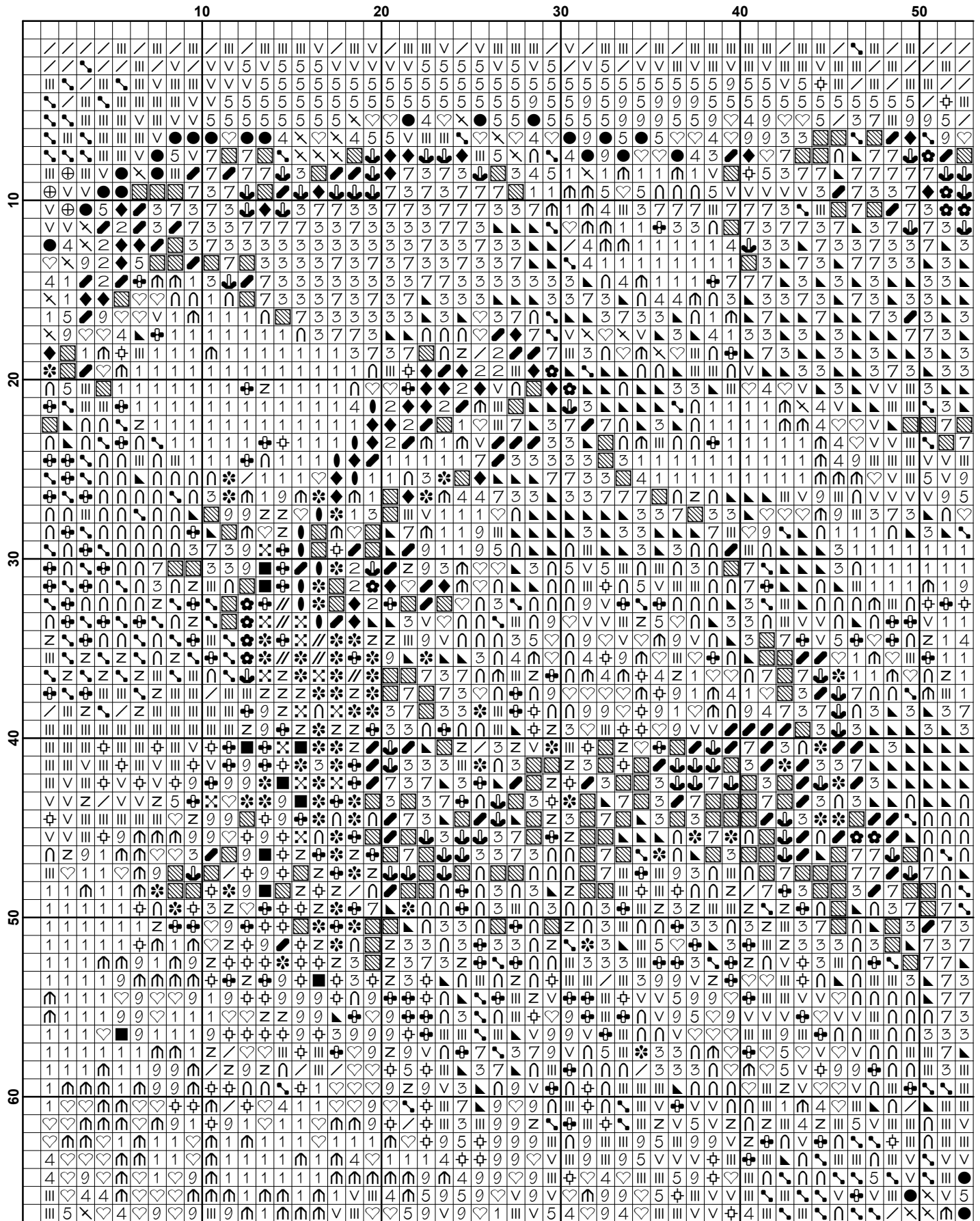
We hope you enjoy stitching our pattern.

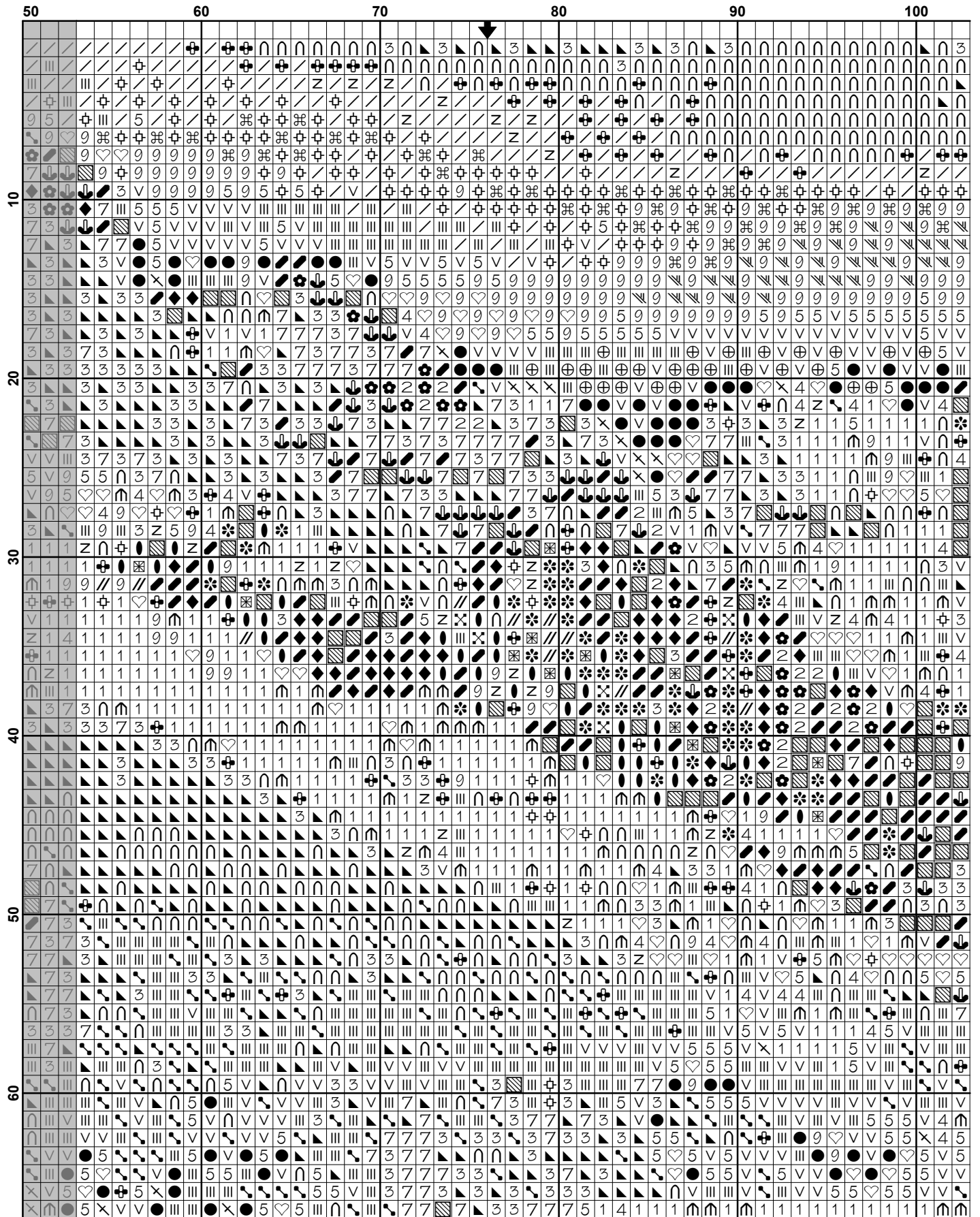
Thanks and Best Wishes
Tereena Clarke

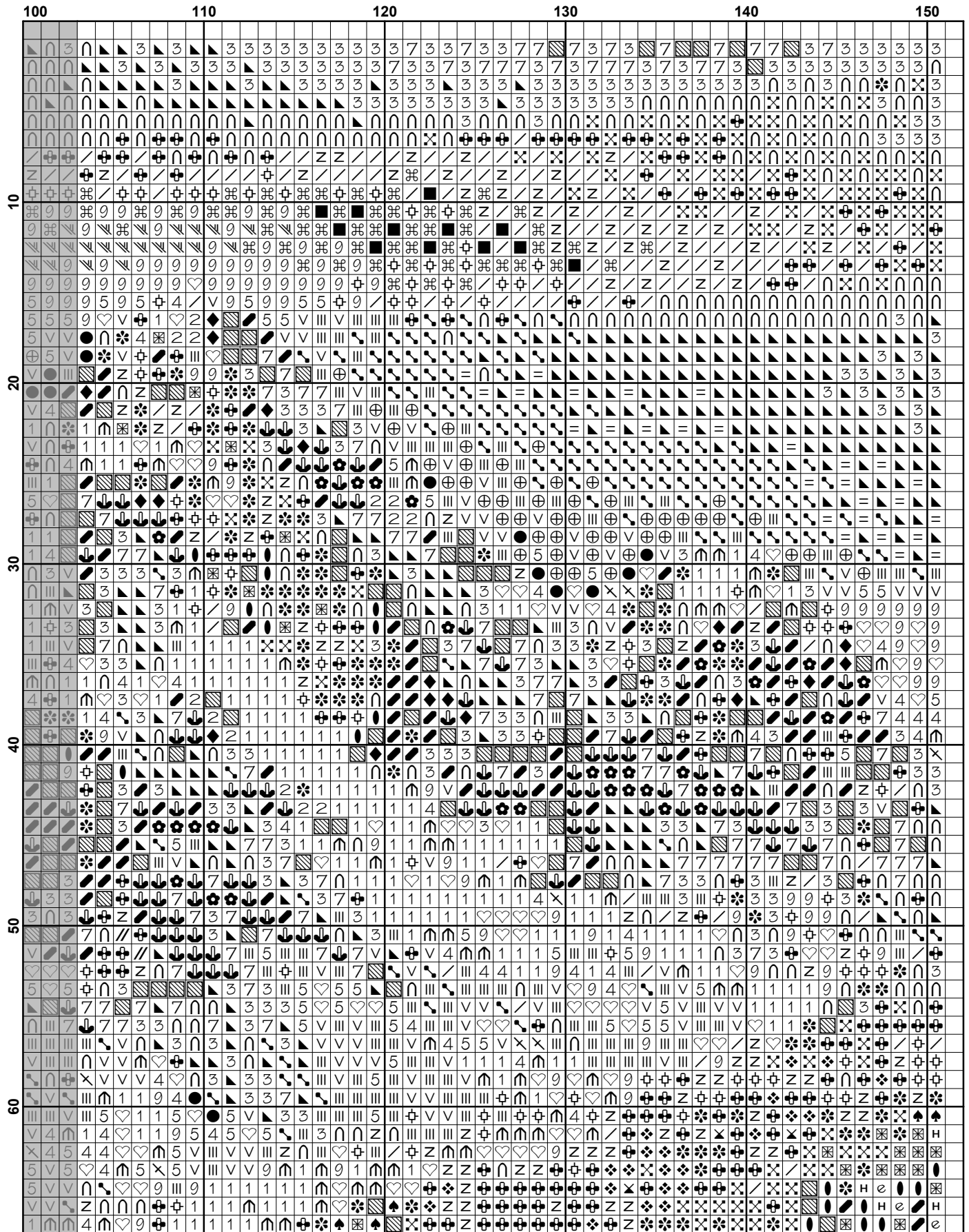
Artecy Cross Stitch
Po Box 3474
Tuggerah, NSW 2259
Australia

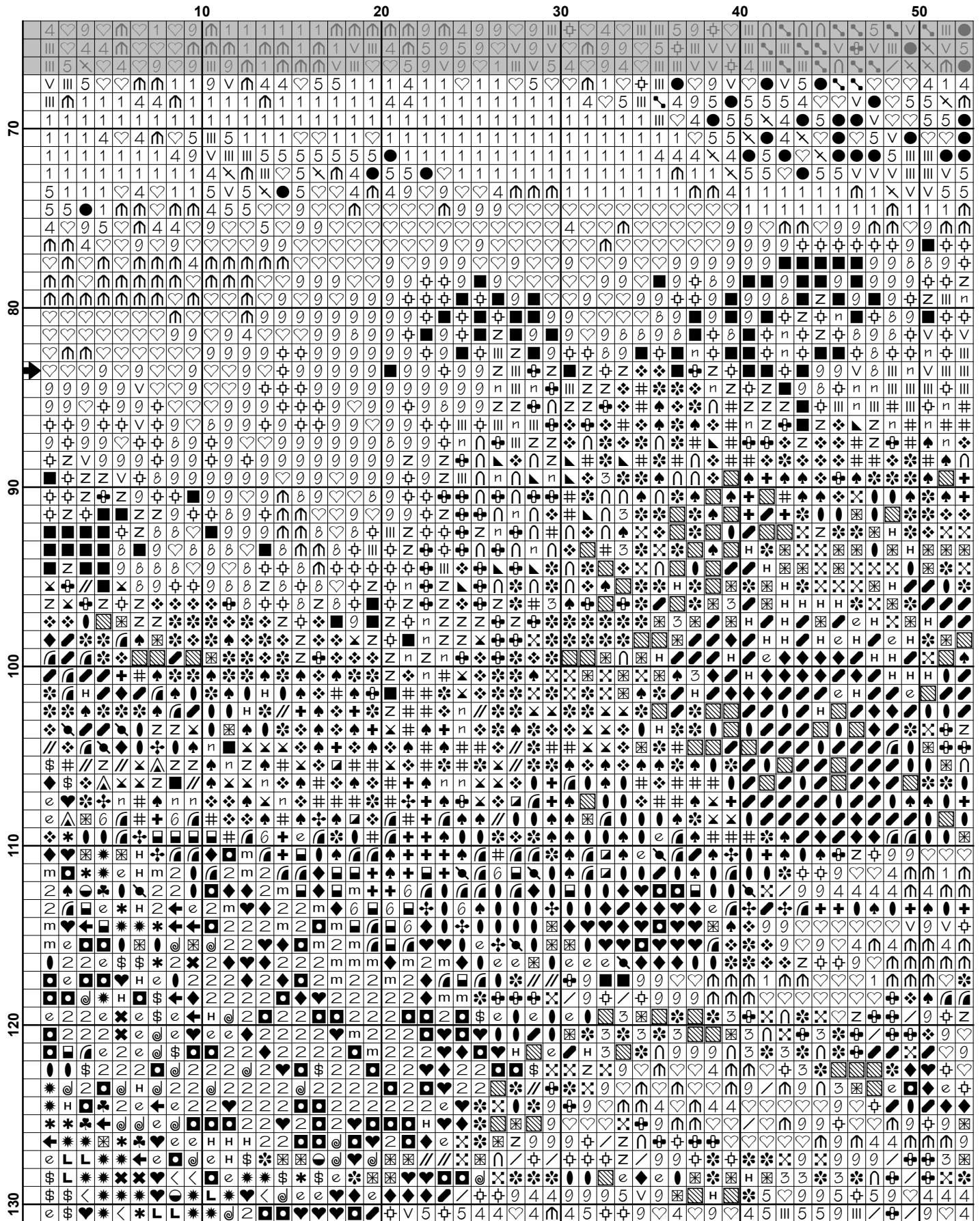
Websites: www.artecy.com and www.artecyshop.com
Email: artecy@artecy.com or stitch@artecyshop.com

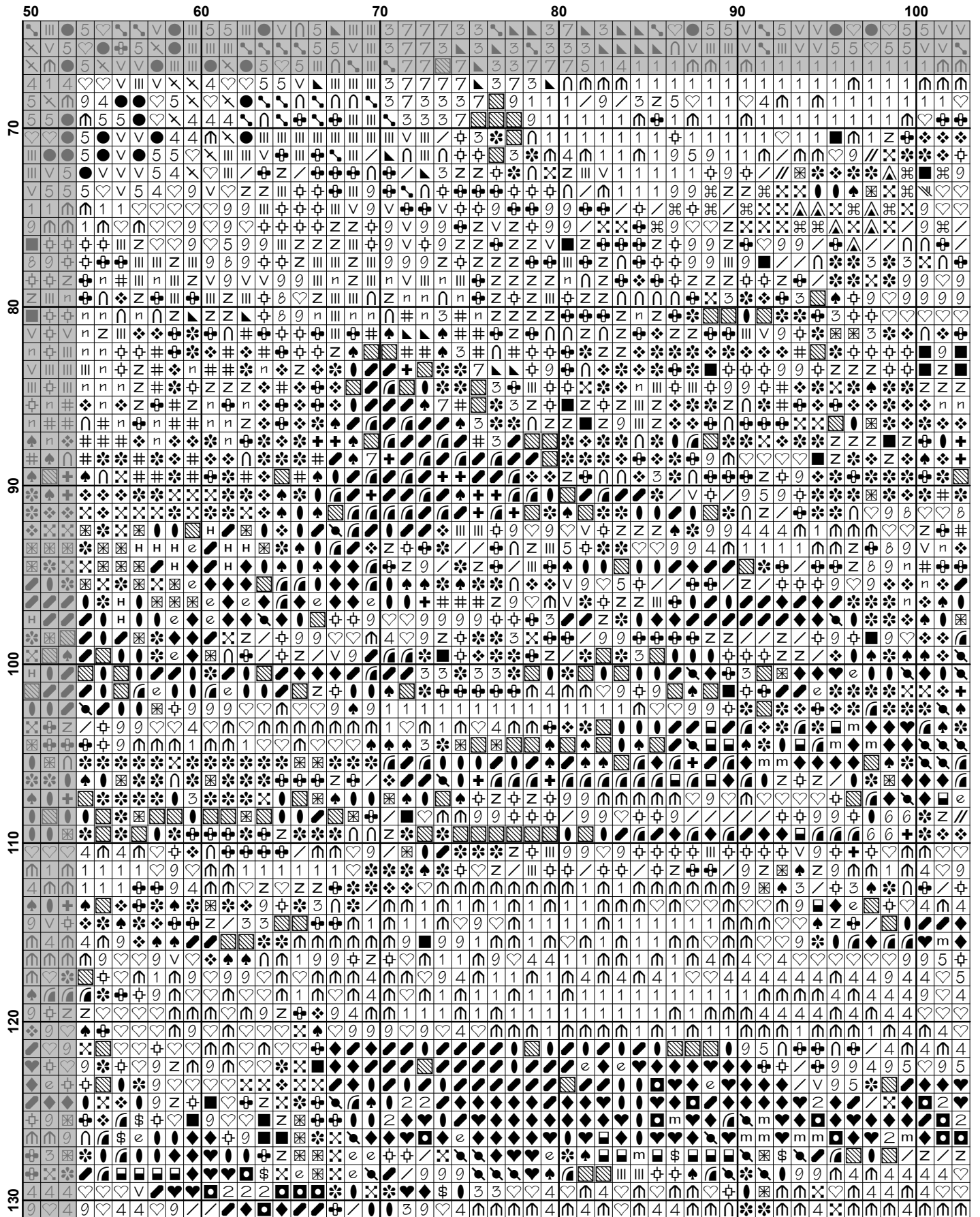
*Patterns are strictly for personal use only. It is against our copyright to make kits for sale from our designs or to sell, copy or redistribute this pattern in any form. You may not upload our patterns to any internet forums or groups or any other website. You may make 1 copy of this pattern for a working copy for your own personal use if needed.

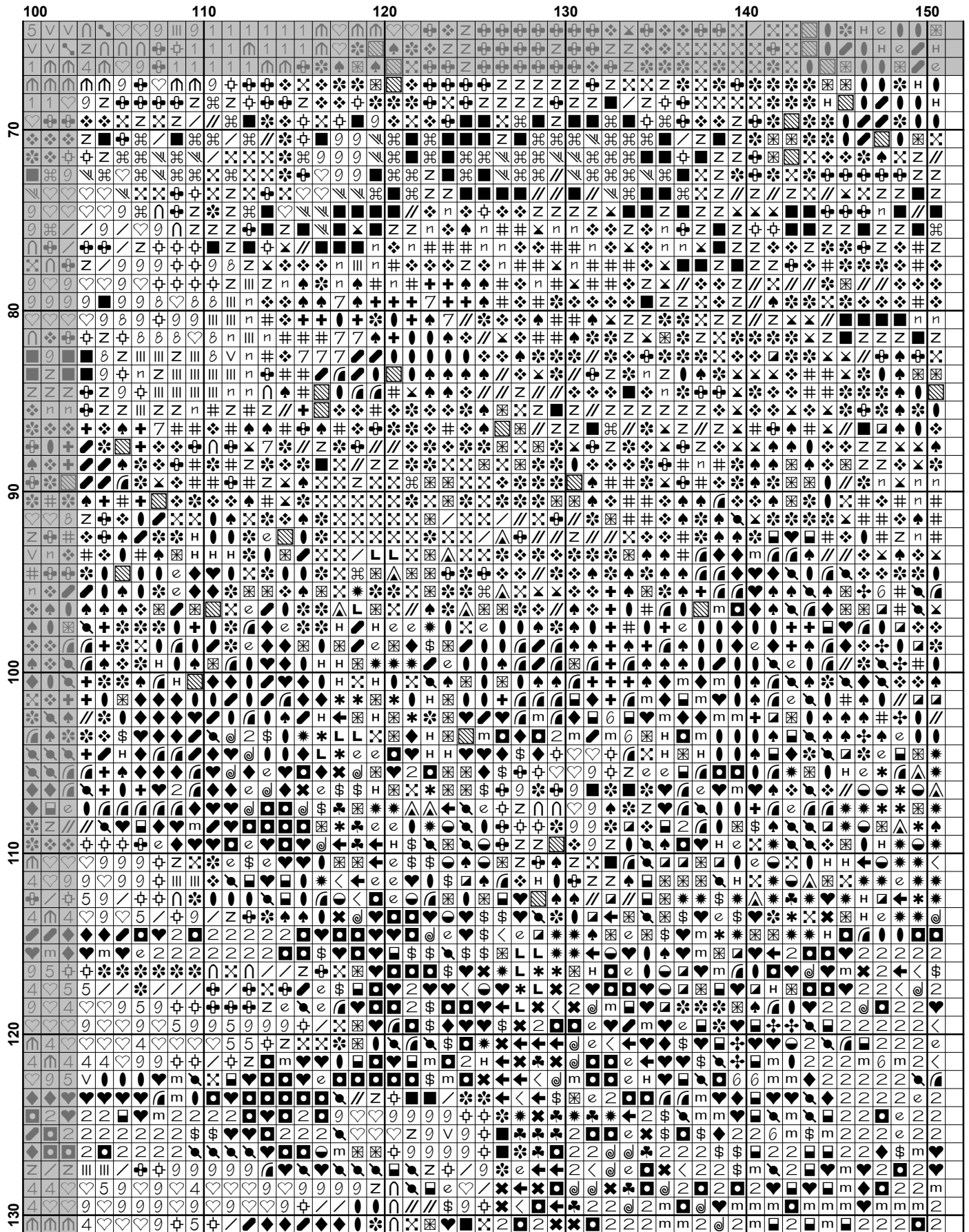


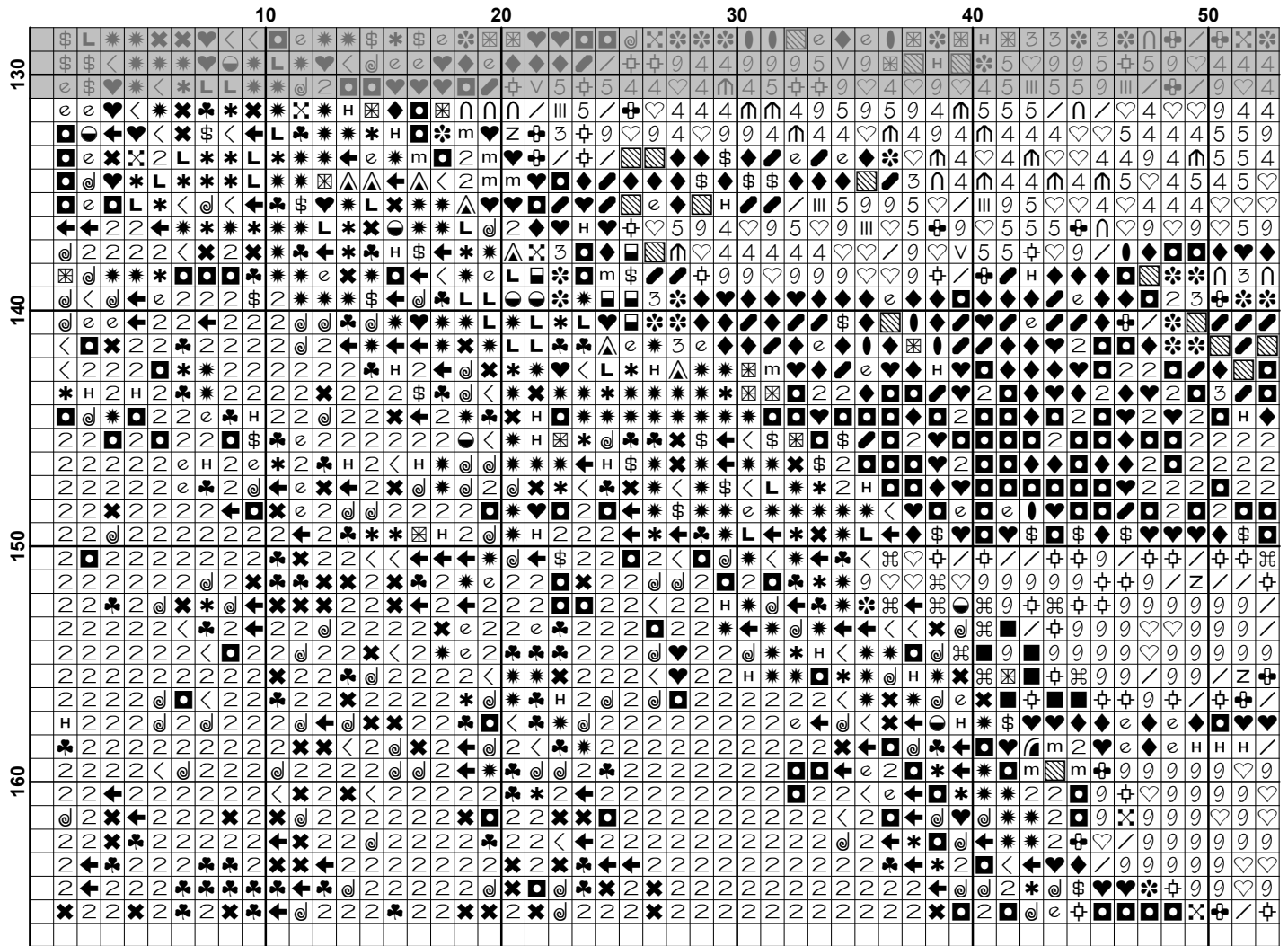


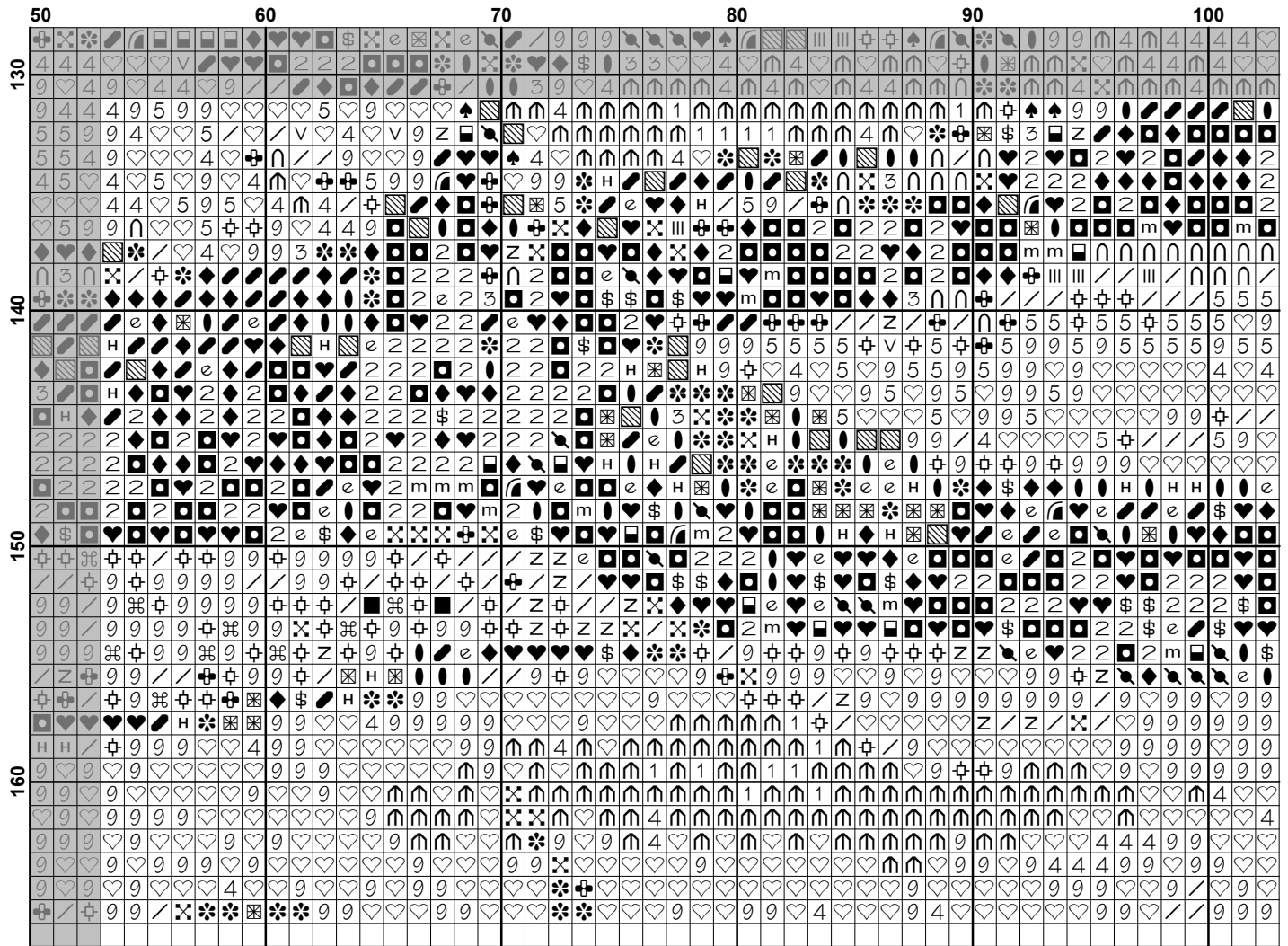


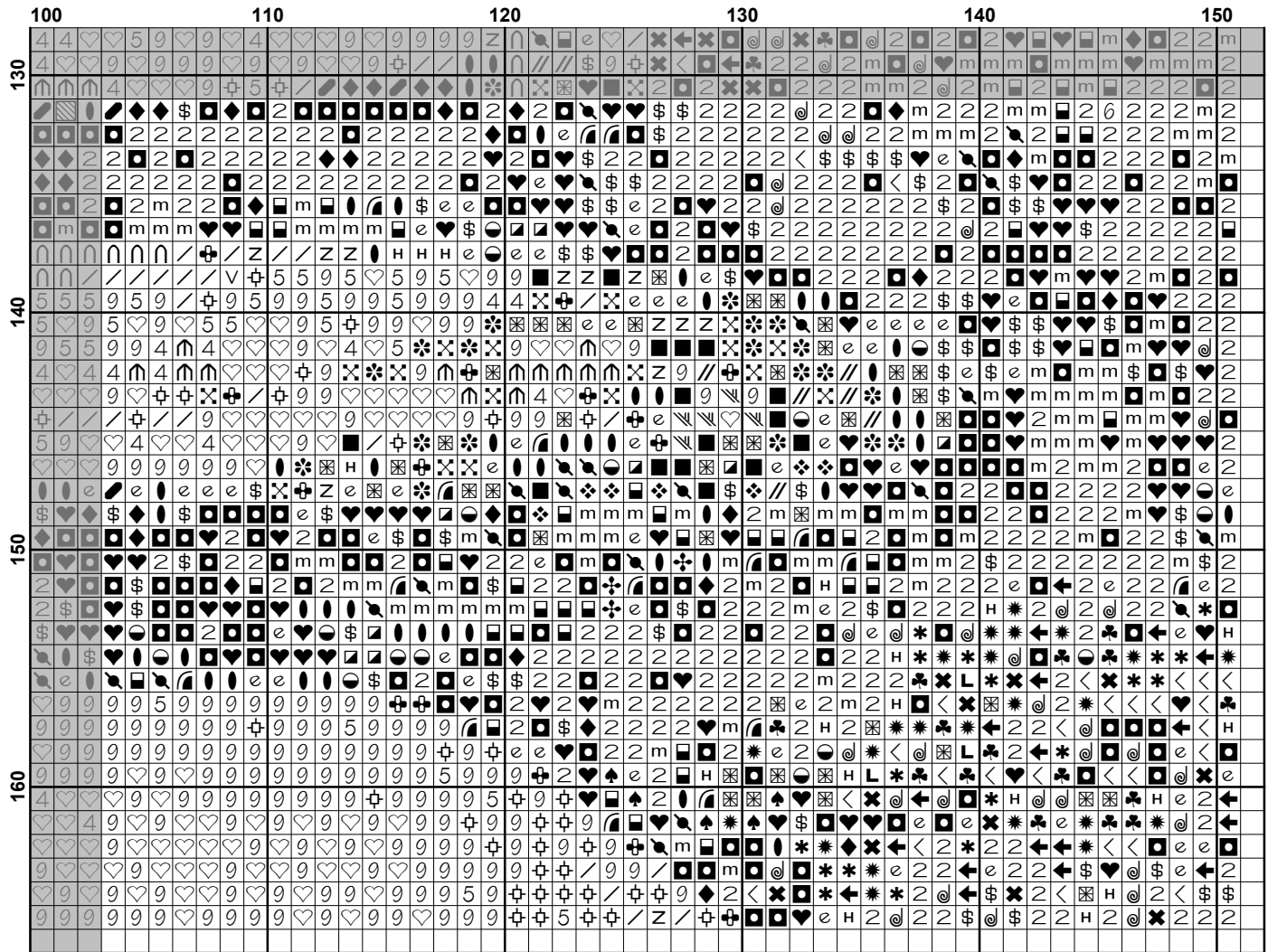






























Pattern Name: Stairway to the Mountains - Crop
Designed By: Image by Komposita - Pixabay
Company: Artecy Cross Stitch
Copyright: Copyright Artecy Cross Stitch. All rights Reserved.
Fabric: Aida 14, White
 150w X 165h Stitches
Size(s): 14 Count, 10-5/8w X 11-3/4h in
 16 Count, 9-3/8w X 10-1/4h in
 18 Count, 8-1/4w X 9-1/8h in

Floss Used for Full Stitches:

Symbol	Strands	Type	Number	Color
	2	DMC	154	Grape-VY DK
	2	DMC	168	Pewter-VY LT
	2	DMC	169	Pewter-LT
	2	DMC	310	Black
	2	DMC	317	Pewter Gray
	2	DMC	320	Pistachio Green-MD
	2	DMC	367	Pistachio Green-DK
	2	DMC	368	Pistachio Green-LT
	2	DMC	413	Pewter Gray-DK
	2	DMC	414	Steel Gray-DK
	2	DMC	415	Pearl Gray
	2	DMC	453	Shell Gray-LT
	2	DMC	520	Fern Green-DK
	2	DMC	522	Fern Green
	2	DMC	524	Fern Green-VY LT
	2	DMC	597	Turquoise
	2	DMC	598	Turquoise-LT
	2	DMC	603	Cranberry
	2	DMC	611	Drab Brown
	2	DMC	613	Drab Brown-VY LT
	2	DMC	646	Beaver Gray-DK
	2	DMC	647	Beaver Gray-MD
	2	DMC	648	Beaver Gray-LT
	2	DMC	700	Christmas Green-BRT
	2	DMC	712	Cream
	2	DMC	762	Pearl Gray-VY LT
	2	DMC	772	Yellow Green-VY LT
	2	DMC	775	Baby Blue-VY LT
	2	DMC	779	Cocoa-DK
	2	DMC	838	Beige Brown-VY DK
	2	DMC	841	Beige Brown-LT
	2	DMC	890	Pistachio Green-UL DK
	2	DMC	902	Garnet-VY DK
	2	DMC	917	Plum-MD
	2	DMC	926	Gray Green-MD
	2	DMC	927	Gray Green-LT
	2	DMC	930	Antique Blue-DK
	2	DMC	932	Antique Blue-LT
	2	DMC	950	Desert Sand-LT
	2	DMC	987	Forest Green-DK
	2	DMC	3031	Mocha Brown-VY DK
	2	DMC	3042	Antique Violet-LT
	2	DMC	3051	Green Gray-DK
	2	DMC	3053	Green Gray
	2	DMC	3072	Beaver Gray-VY LT
	2	DMC	3345	Hunter Green-DK

Symbol	Strands	Type	Number	Color
	2	DMC	3363	Pine Green-MD
	2	DMC	3371	Black Brown
	2	DMC	3607	Plum-LT
	2	DMC	3685	Mauve-DK
	2	DMC	3727	Antique Mauve-LT
	2	DMC	3731	Dusty Rose-VY DK
	2	DMC	3740	Antique Violet-DK
	2	DMC	3750	Antique Blue-VY DK
	2	DMC	3768	Gray Green-DK
	2	DMC	3787	Brown Gray-DK
	2	DMC	3799	Pewter Gray-VY DK
	2	DMC	3803	Mauve-MD
	2	DMC	3841	Baby Blue-Pale
	2	DMC	3859	Rosewood-LT
	2	DMC	3860	Cocoa
	2	DMC	3861	Cocoa-LT
	2	DMC	3862	Mocha Beige-DK
	2	DMC	3865	Winter White

Notes:

The middle of this pattern can be found on page 5 and is 76 stitches across and 84 stitches down.

Pattern layout using page numbers in top left.

1 2 3
 4 5 6
 7 8 9

Usage Summary

Strands Per Skein: 6

Skein Length: 313.0 in

Type	Number	Full	Half	Quarter	Petite	Back(in)	Str(in)	Spec(in)	French	Bead	Skein Est.
DMC 154	154	164	0	0	0	0.0	0.0	0.0	0	0	1.000
DMC 168	168	501	0	0	0	0.0	0.0	0.0	0	0	1.000
DMC 169	169	973	0	0	0	0.0	0.0	0.0	0	0	1.000
DMC 310	310	1211	0	0	0	0.0	0.0	0.0	0	0	1.000
DMC 317	317	623	0	0	0	0.0	0.0	0.0	0	0	1.000
DMC 320	320	206	0	0	0	0.0	0.0	0.0	0	0	1.000
DMC 367	367	102	0	0	0	0.0	0.0	0.0	0	0	1.000
DMC 368	368	127	0	0	0	0.0	0.0	0.0	0	0	1.000
DMC 413	413	684	0	0	0	0.0	0.0	0.0	0	0	1.000
DMC 414	414	837	0	0	0	0.0	0.0	0.0	0	0	1.000
DMC 415	415	486	0	0	0	0.0	0.0	0.0	0	0	1.000
DMC 453	453	1447	0	0	0	0.0	0.0	0.0	0	0	1.000
DMC 520	520	235	0	0	0	0.0	0.0	0.0	0	0	1.000
DMC 522	522	406	0	0	0	0.0	0.0	0.0	0	0	1.000
DMC 524	524	678	0	0	0	0.0	0.0	0.0	0	0	1.000
DMC 597	597	28	0	0	0	0.0	0.0	0.0	0	0	1.000
DMC 598	598	78	0	0	0	0.0	0.0	0.0	0	0	1.000
DMC 603	603	41	0	0	0	0.0	0.0	0.0	0	0	1.000
DMC 611	611	38	0	0	0	0.0	0.0	0.0	0	0	1.000
DMC 613	613	241	0	0	0	0.0	0.0	0.0	0	0	1.000
DMC 646	646	908	0	0	0	0.0	0.0	0.0	0	0	1.000
DMC 647	647	805	0	0	0	0.0	0.0	0.0	0	0	1.000
DMC 648	648	847	0	0	0	0.0	0.0	0.0	0	0	1.000
DMC 700	700	21	0	0	0	0.0	0.0	0.0	0	0	1.000
DMC 712	712	809	0	0	0	0.0	0.0	0.0	0	0	1.000
DMC 762	762	366	0	0	0	0.0	0.0	0.0	0	0	1.000
DMC 772	772	66	0	0	0	0.0	0.0	0.0	0	0	1.000
DMC 775	775	67	0	0	0	0.0	0.0	0.0	0	0	1.000
DMC 779	779	308	0	0	0	0.0	0.0	0.0	0	0	1.000
DMC 838	838	196	0	0	0	0.0	0.0	0.0	0	0	1.000
DMC 841	841	109	0	0	0	0.0	0.0	0.0	0	0	1.000
DMC 890	890	216	0	0	0	0.0	0.0	0.0	0	0	1.000
DMC 902	902	95	0	0	0	0.0	0.0	0.0	0	0	1.000
DMC 917	917	98	0	0	0	0.0	0.0	0.0	0	0	1.000
DMC 926	926	854	0	0	0	0.0	0.0	0.0	0	0	1.000
DMC 927	927	802	0	0	0	0.0	0.0	0.0	0	0	1.000
DMC 930	930	198	0	0	0	0.0	0.0	0.0	0	0	1.000
DMC 932	932	403	0	0	0	0.0	0.0	0.0	0	0	1.000
DMC 950	950	75	0	0	0	0.0	0.0	0.0	0	0	1.000
DMC 987	987	25	0	0	0	0.0	0.0	0.0	0	0	1.000
DMC 3031	3031	443	0	0	0	0.0	0.0	0.0	0	0	1.000
DMC 3042	3042	575	0	0	0	0.0	0.0	0.0	0	0	1.000
DMC 3051	3051	144	0	0	0	0.0	0.0	0.0	0	0	1.000
DMC 3053	3053	94	0	0	0	0.0	0.0	0.0	0	0	1.000
DMC 3072	3072	1358	0	0	0	0.0	0.0	0.0	0	0	1.000
DMC 3345	3345	146	0	0	0	0.0	0.0	0.0	0	0	1.000
DMC 3363	3363	319	0	0	0	0.0	0.0	0.0	0	0	1.000
DMC 3371	3371	642	0	0	0	0.0	0.0	0.0	0	0	1.000
DMC 3607	3607	89	0	0	0	0.0	0.0	0.0	0	0	1.000
DMC 3685	3685	117	0	0	0	0.0	0.0	0.0	0	0	1.000
DMC 3727	3727	182	0	0	0	0.0	0.0	0.0	0	0	1.000
DMC 3731	3731	214	0	0	0	0.0	0.0	0.0	0	0	1.000

Type	Number	Full	Half	Quarter	Petite	Back(in)	Str(in)	Spec(in)	French	Bead	Skein	Est.
■ DMC	3740	177	0	0	0	0.0	0.0	0.0	0	0	1.000	
■ DMC	3750	73	0	0	0	0.0	0.0	0.0	0	0	1.000	
■ DMC	3768	418	0	0	0	0.0	0.0	0.0	0	0	1.000	
■ DMC	3787	591	0	0	0	0.0	0.0	0.0	0	0	1.000	
■ DMC	3799	569	0	0	0	0.0	0.0	0.0	0	0	1.000	
■ DMC	3803	131	0	0	0	0.0	0.0	0.0	0	0	1.000	
■ DMC	3841	134	0	0	0	0.0	0.0	0.0	0	0	1.000	
■ DMC	3859	30	0	0	0	0.0	0.0	0.0	0	0	1.000	
■ DMC	3860	350	0	0	0	0.0	0.0	0.0	0	0	1.000	
■ DMC	3861	399	0	0	0	0.0	0.0	0.0	0	0	1.000	
■ DMC	3862	48	0	0	0	0.0	0.0	0.0	0	0	1.000	
□ DMC	3865	1133	0	0	0	0.0	0.0	0.0	0	0	1.000	