

Artecy

CROSS STITCH

Mini Pop Art Tiger



* Original image© priatna788 - Vectorstock
Cross Stitch Design by Tereena Clarke.

Completed Size = 186w x 197h Stitches

14 Count, 13.5w x 14.5h inches (34cm x 37cm)

16 Count, 12w x 12.5h inches (30cm x 32cm)

18 Count, 10.5w x 11h inches (27cm x 28cm)

Uses 84 DMC cotton colours. Only full cross stitches are used in this pattern.

Pattern Instructions

* This pattern can be worked on any fabric type, colour or count you prefer. To work out the size of the finished article, take the number of stitches wide and high and divide it by the count of your fabric (e.g. 14,16,18 count aida etc) to get the size in inches. Times it by 2.54 to get centimetres. We have the sizes in inches shown on the previous page. Also leave at least a few inches of fabric around each side of the design to assist in framing. The higher the fabric count the smaller the completed project will be.

* To put the pattern together look in the top and bottom corners. The page numbers in brackets show which page number it joins up to. Page 1 always starts at the top left hand side of the pattern. Our pages also have a shaded grey section. This indicates a 3 row overlap from adjoining pages to assist with reading the pattern. PLEASE DO NOT RESTITCH THIS AREA.

* You should begin at the centre of the pattern. To find the centre of the pattern it is just a matter of laying the pattern out and locating the arrows at the top and left hand side of the patterns, they are determined by dividing the stitch numbers wide and high in half. Where the two points meet in the middle, that is the centre.

* If you need more assistance to find the middle of your pattern or the page layout, please see the notes section on the colour symbol chart. The easiest way to stitch this pattern, as it has multiple pages, is to stitch one page at a time.

* We suggest using two strands of floss for each stitch and one strand for backstitching if the pattern calls for it.

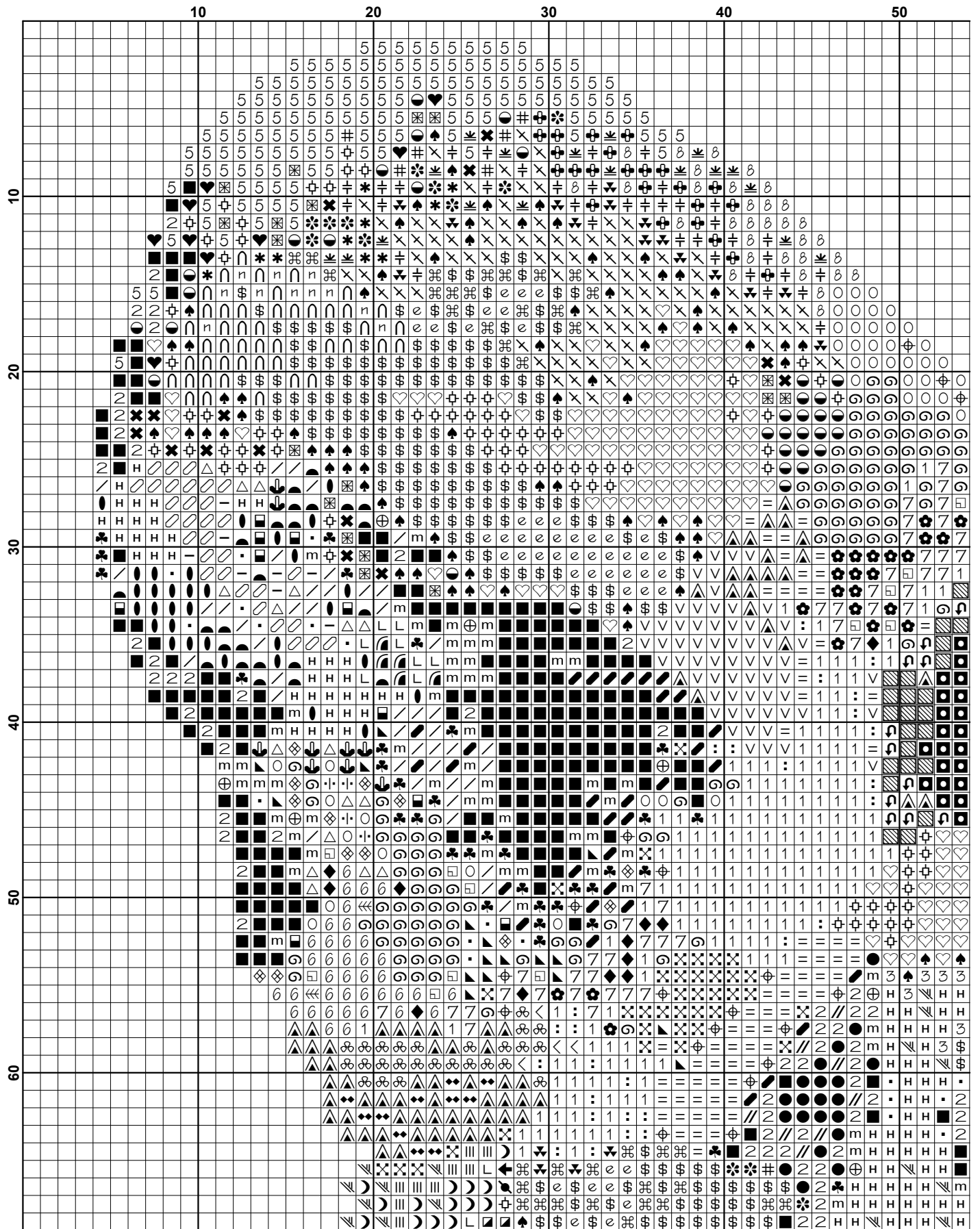
We hope you enjoy stitching our pattern.

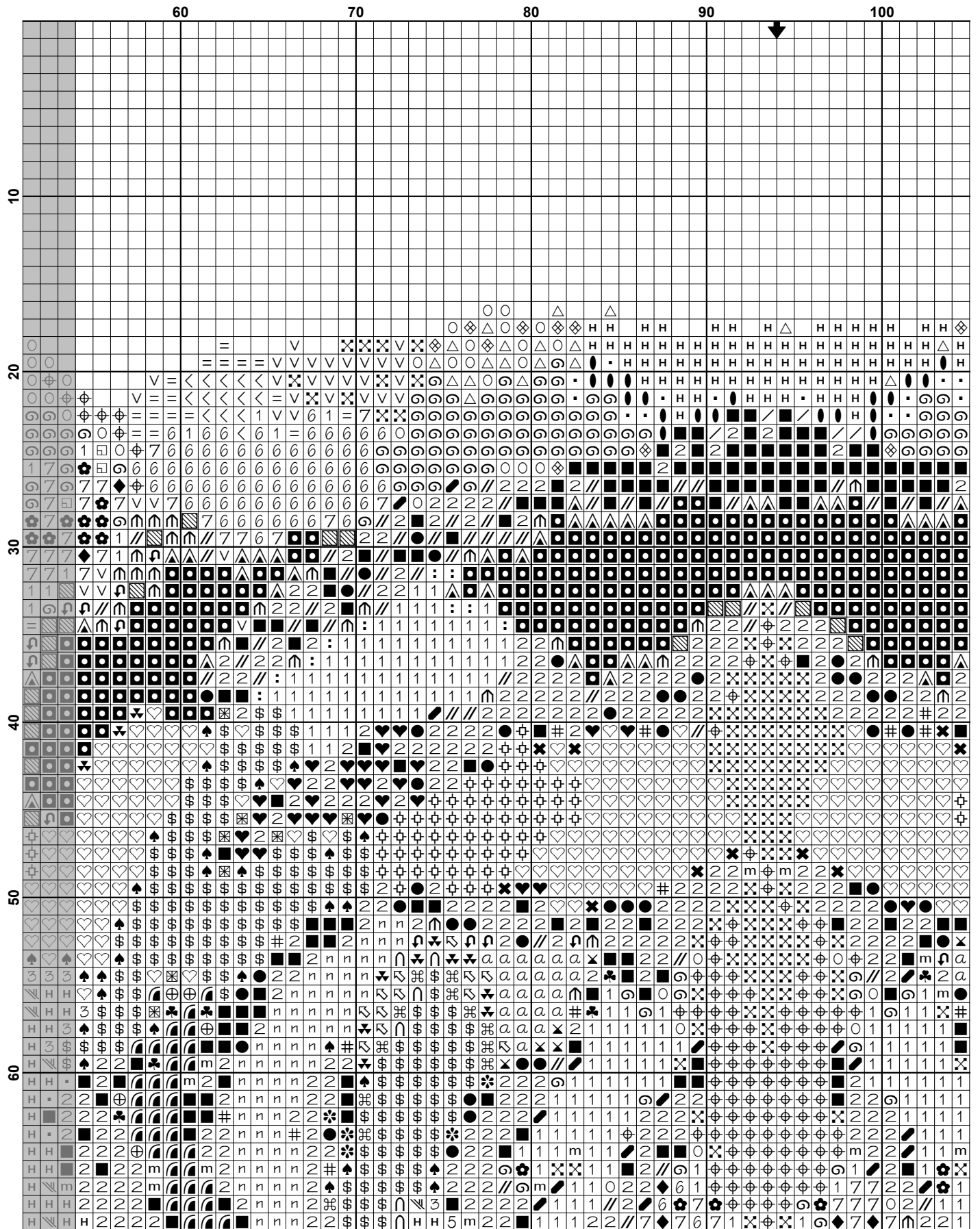
Thanks and Best Wishes
Tereena Clarke

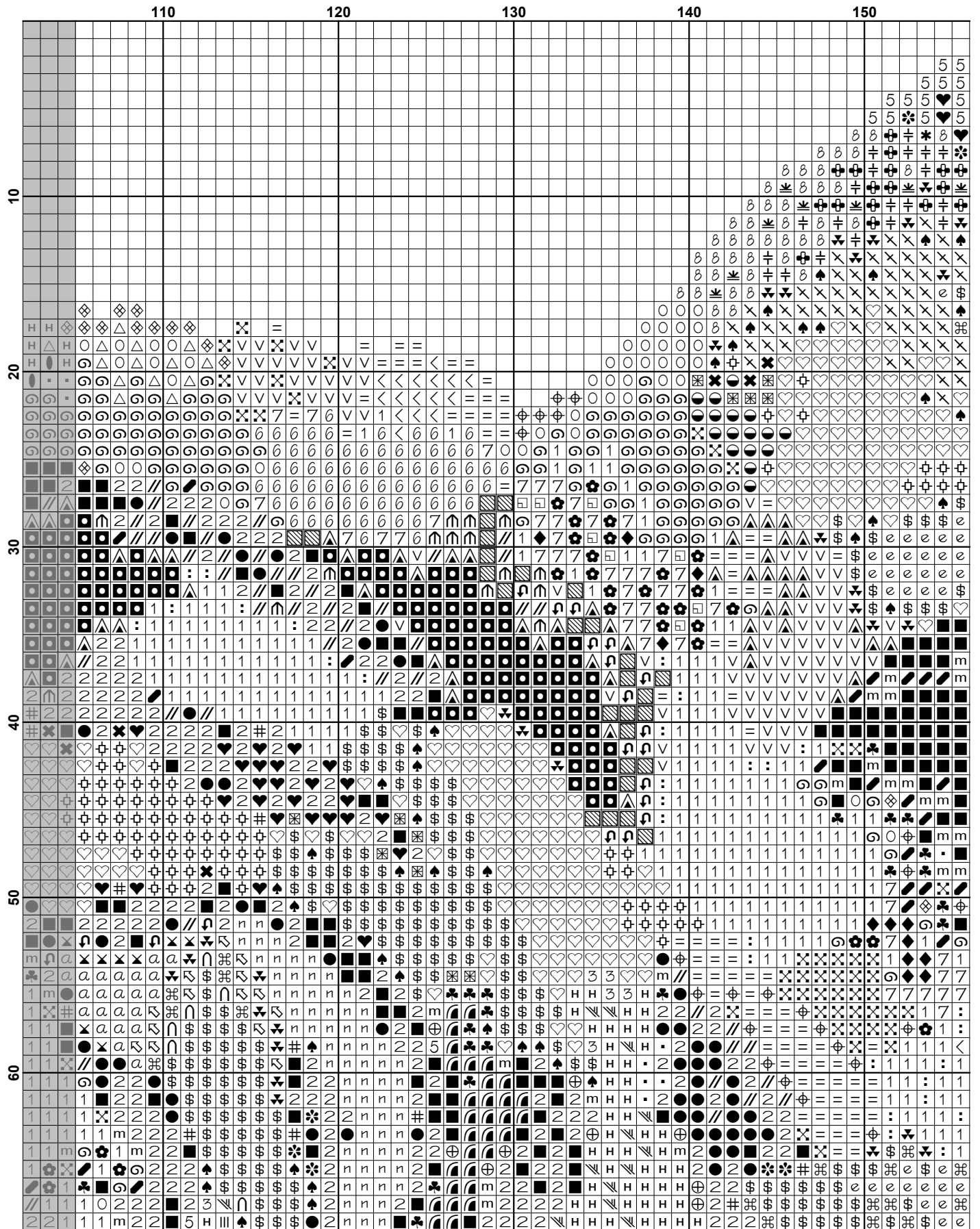
Artecy Cross Stitch
Po Box 3474
Tuggerah, NSW 2259
Australia

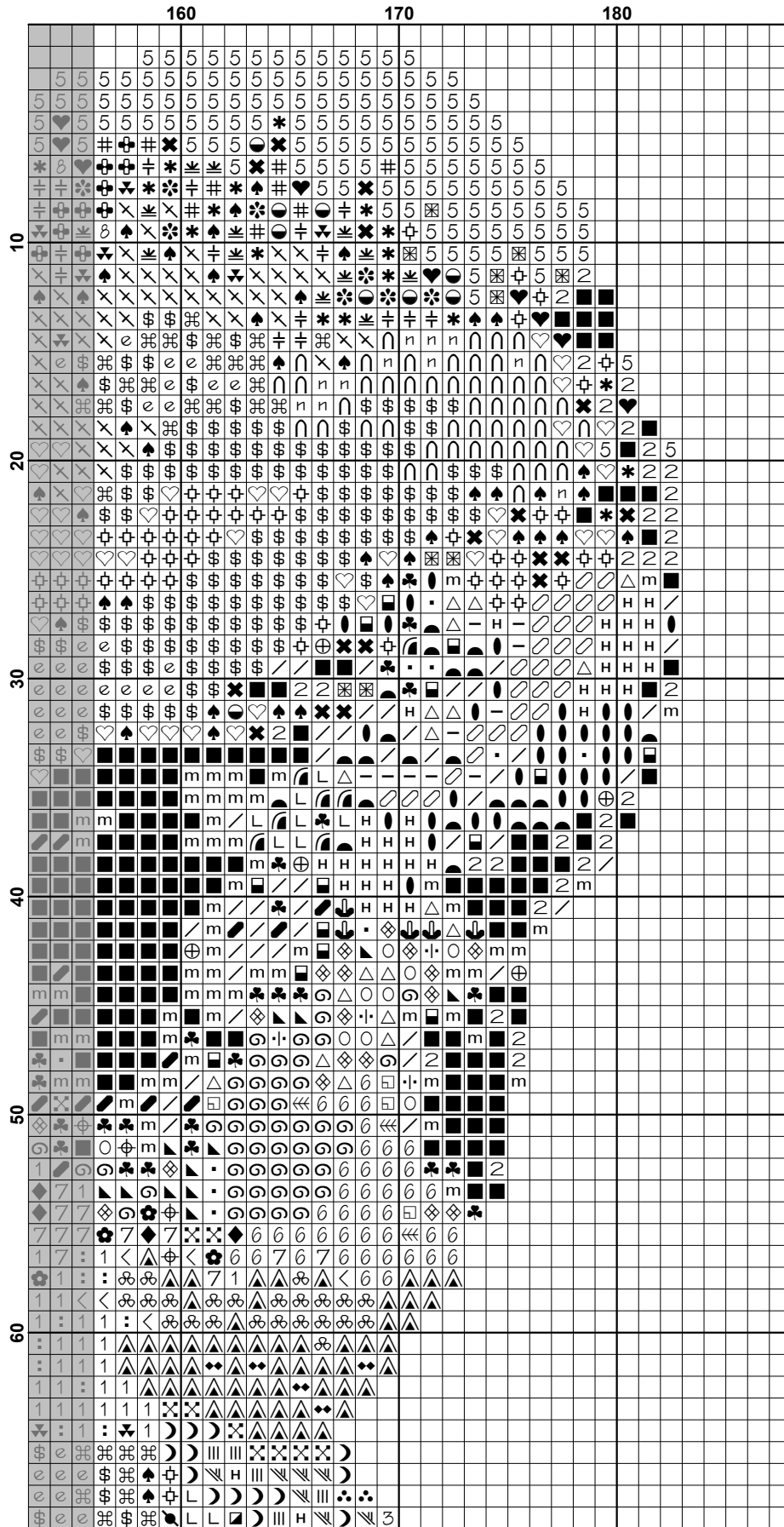
Websites: www.artecy.com and www.artecyshop.com
Email: artecy@artecy.com or stitch@artecyshop.com

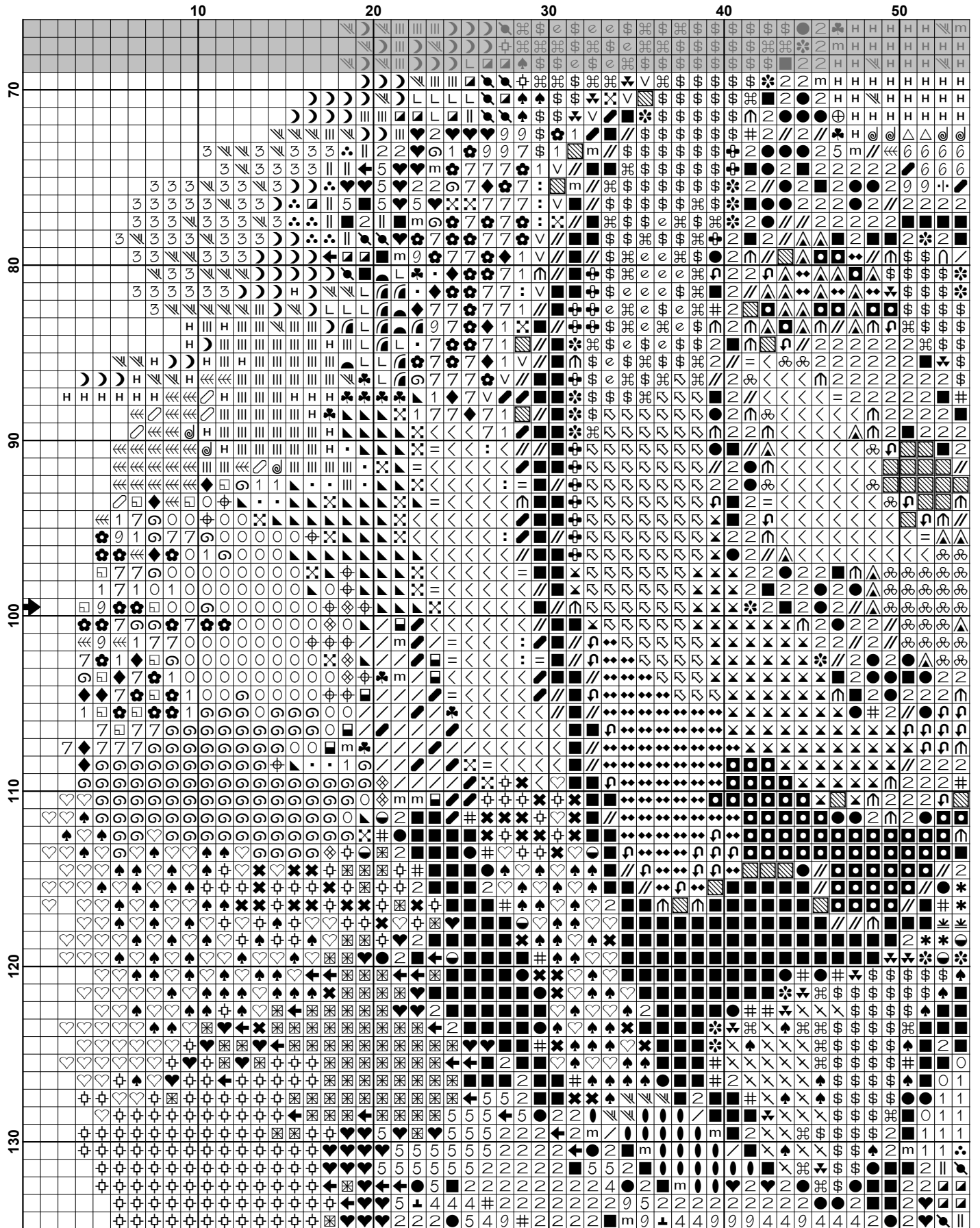
*Patterns are strictly for personal use only. It is against our copyright to make kits for sale from our designs or to sell, copy or redistribute this pattern in any form. You may not upload our patterns to any internet forums or groups or any other website. You may make 1 copy of this pattern for a working copy for your own personal use if needed.

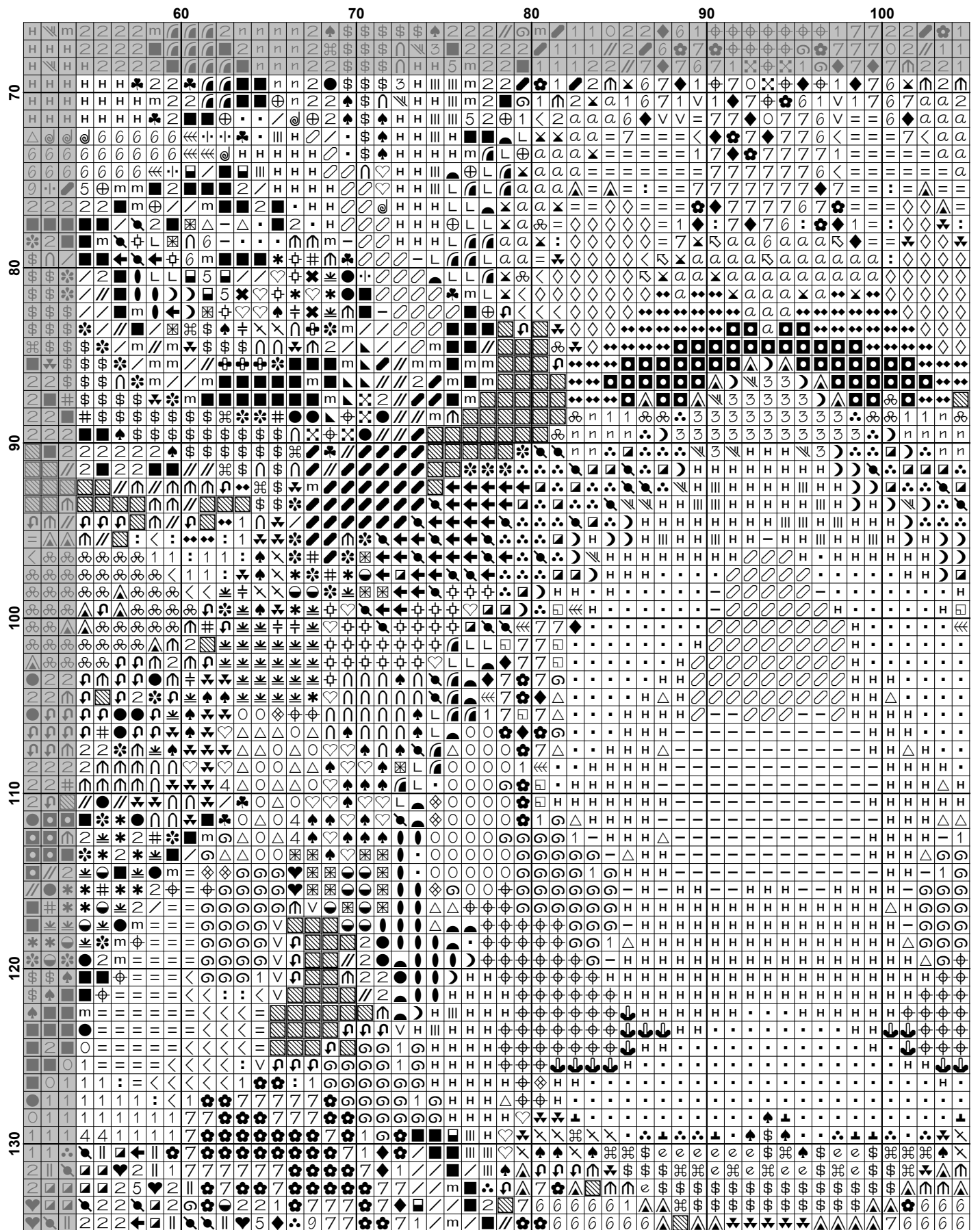


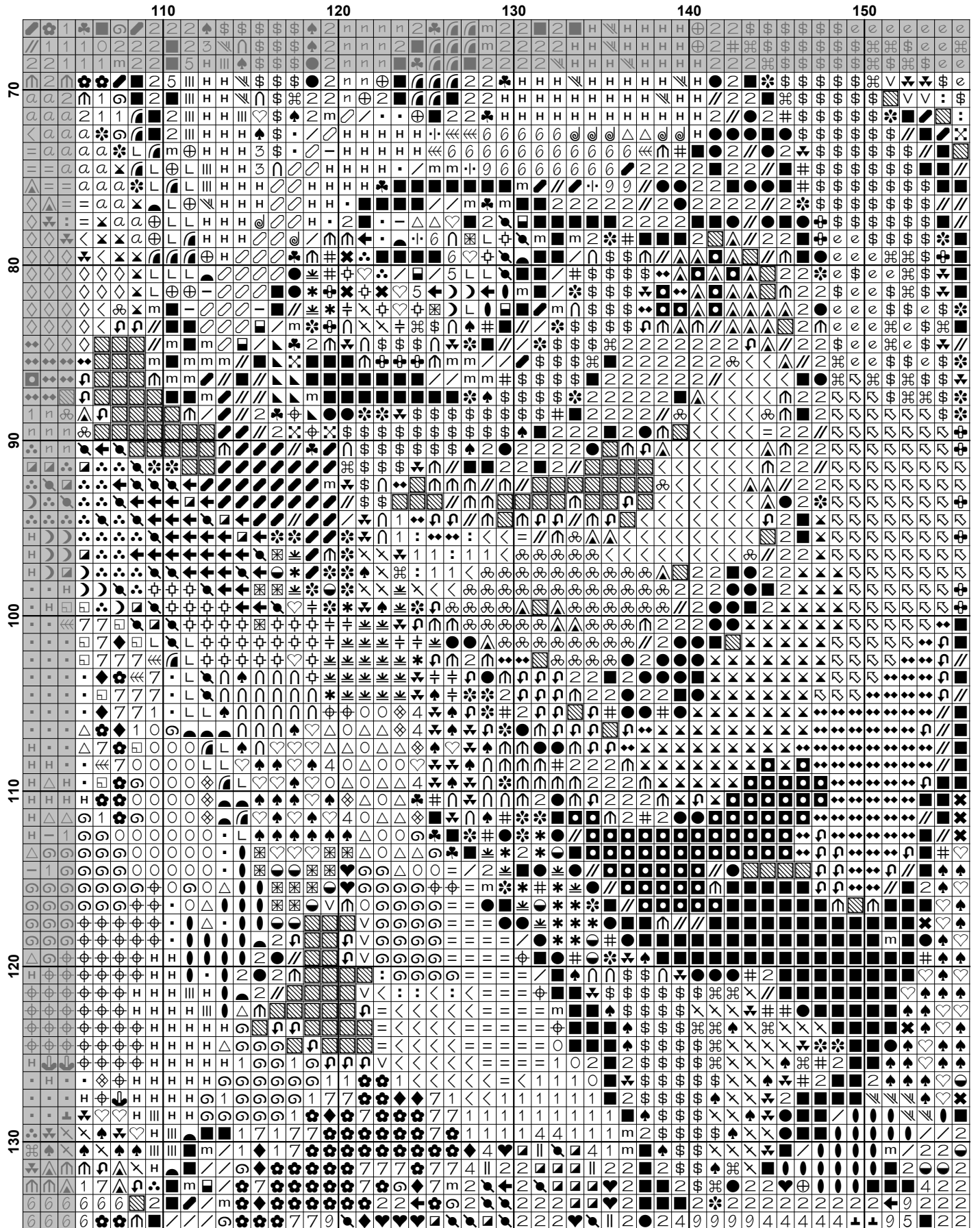


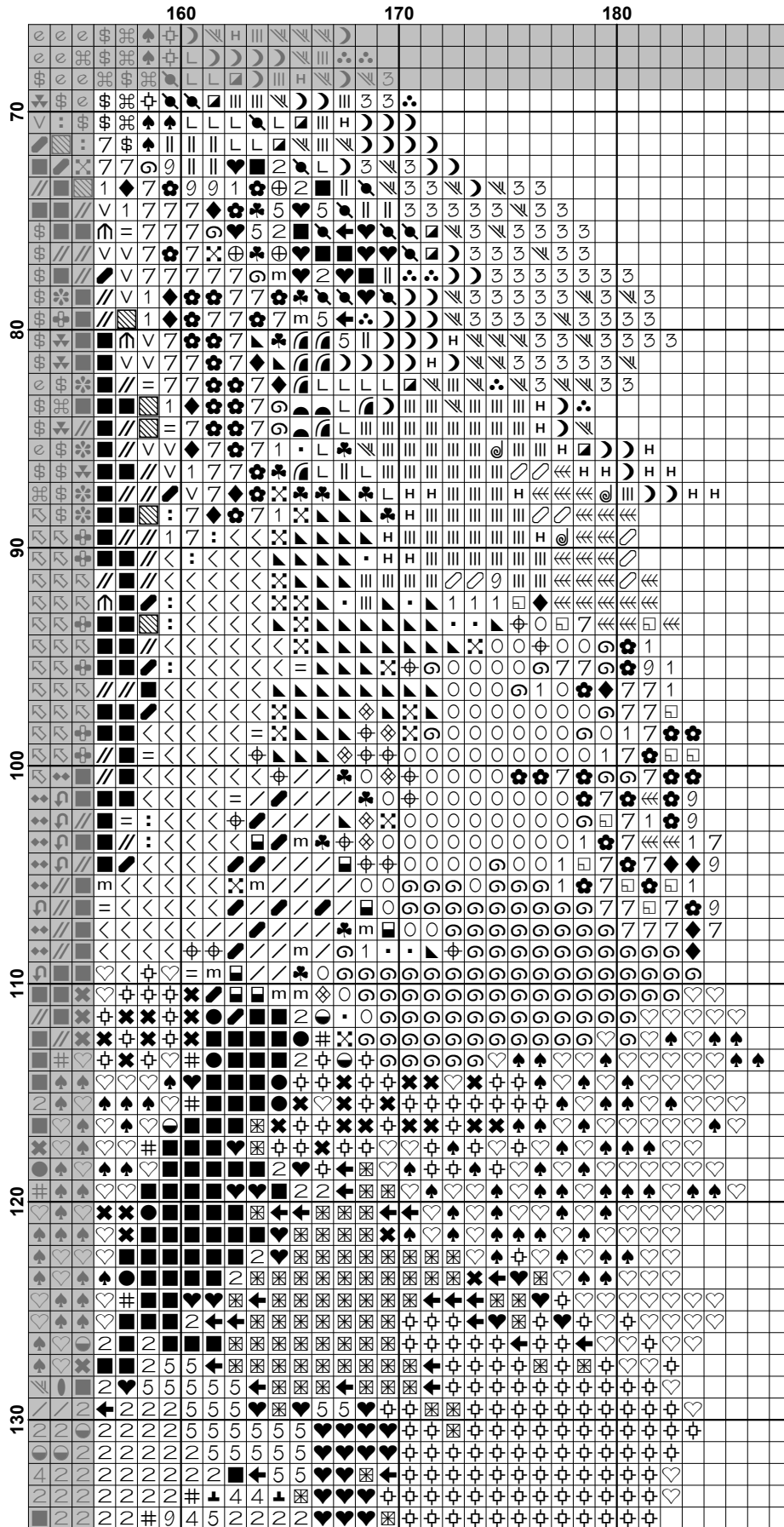


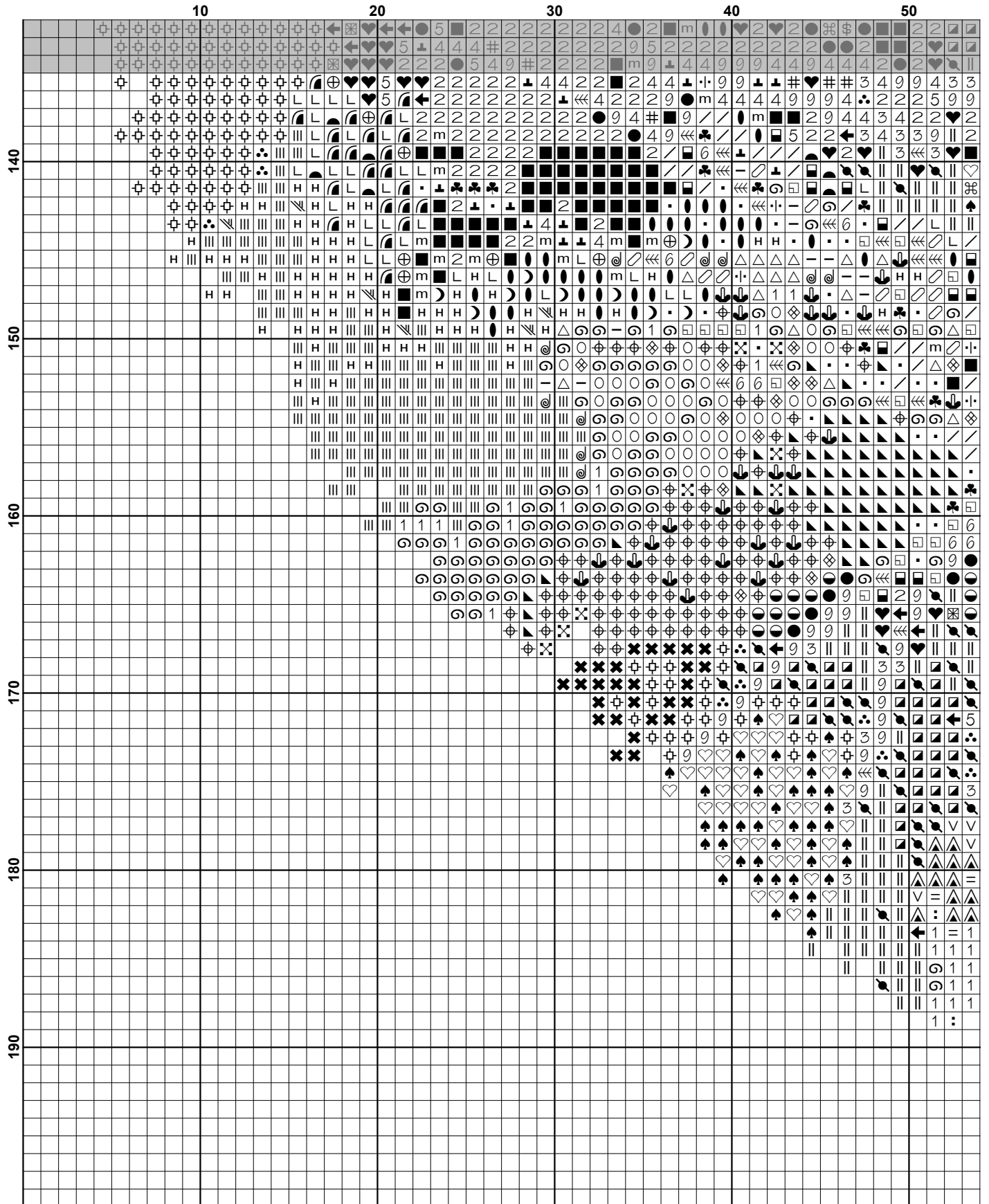


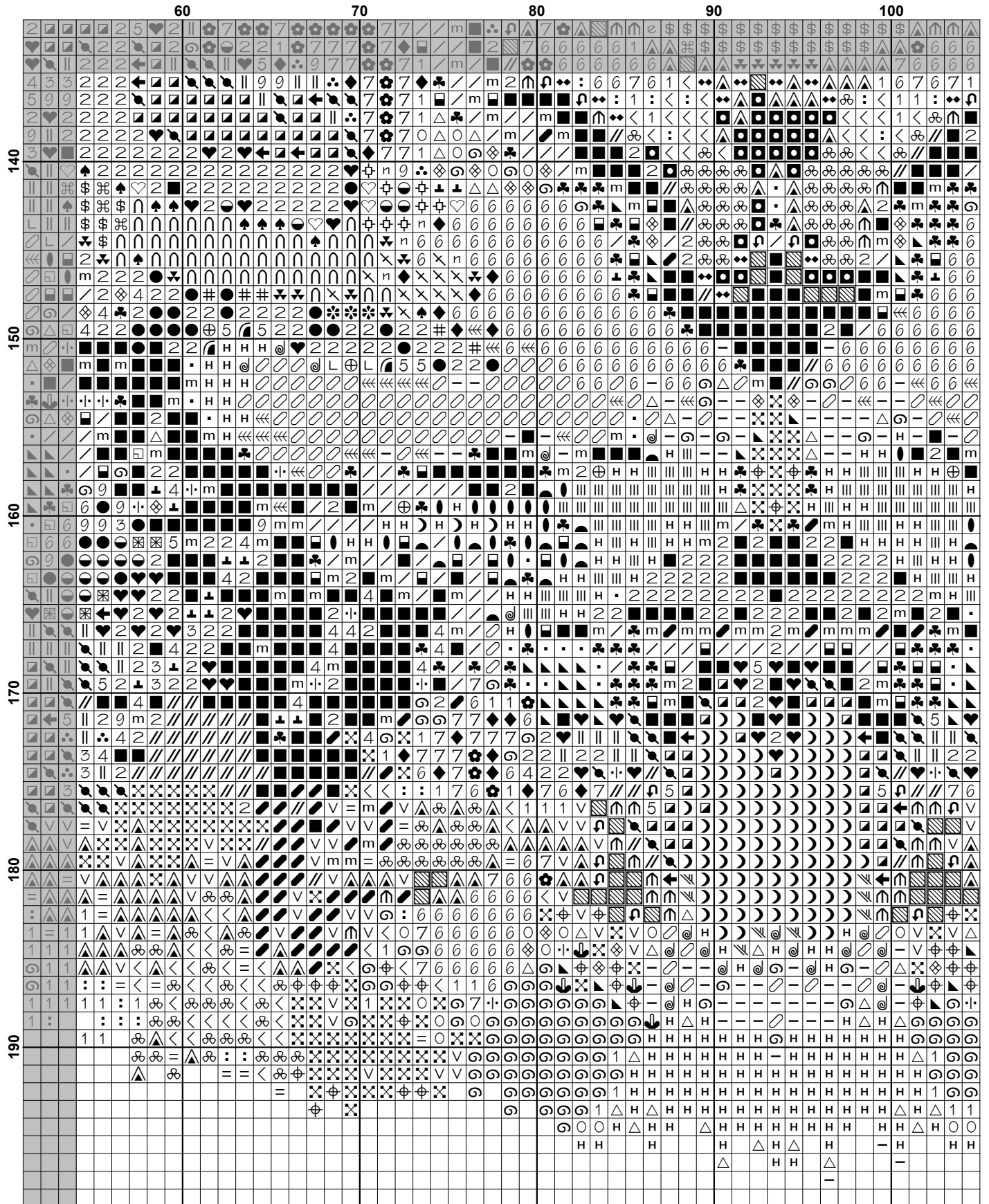


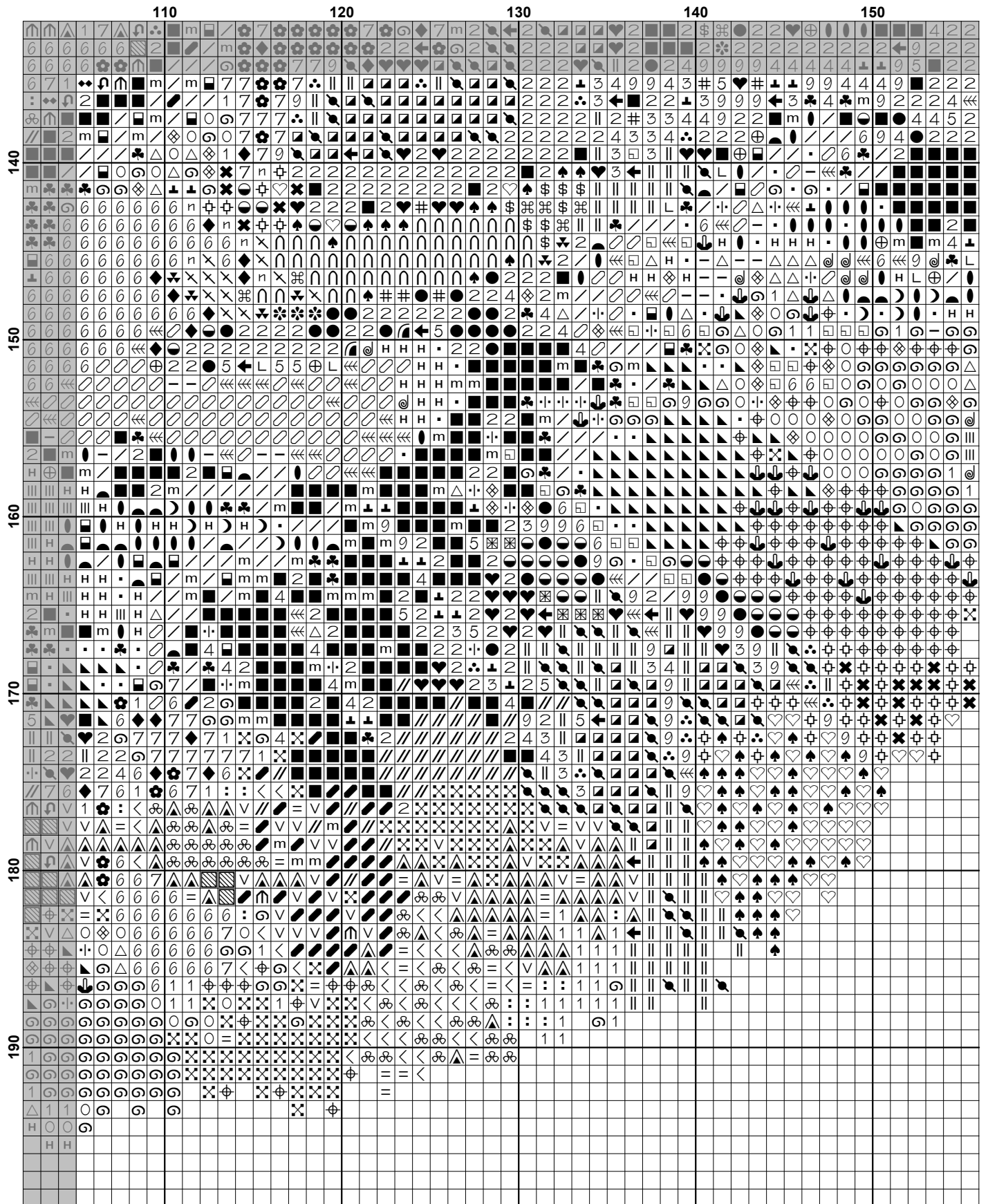


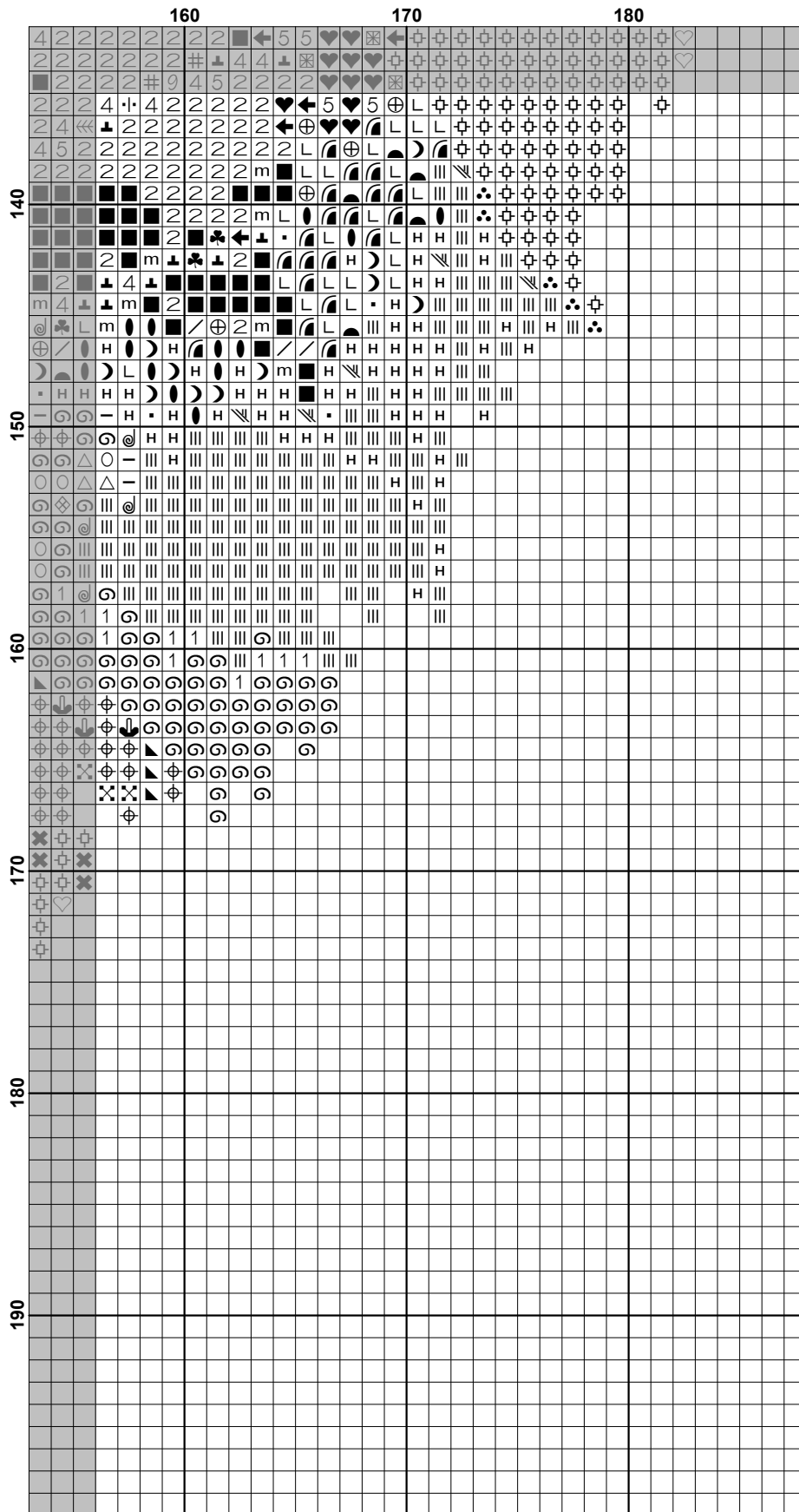












Pattern Name: Mini Pop Art Tiger
Designed By: Artwork by priatna788 - Vectorstock
Company: Artecy Cross Stitch
Copyright: Copyright Artecy Cross Stitch. All rights Reserved.
Fabric: Aida 14, White
 186w X 197h Stitches
Size(s): 14 Count, 13-1/4w X 14h in
 16 Count, 11-5/8w X 12-1/4h in
 18 Count, 10-1/4w X 10-7/8h in

Floss Used for Full Stitches:

Symbol	Strands	Type	Number	Color
	2	DMC	150	Dusty Rose-UL VY DK
	2	DMC	154	Grape-VY DK
	2	DMC	155	Blue Violet-MD DK
	2	DMC	158	Cornflower Blue-MD VY DK
	2	DMC	159	Gray Blue-LT
	2	DMC	161	Gray Blue
	2	DMC	166	Moss Green-MD LT
	2	DMC	208	Lavender-VY DK
	2	DMC	209	Lavender-DK
	2	DMC	210	Lavender-MD
	2	DMC	307	Lemon
	2	DMC	310	Black
	2	DMC	318	Steel Gray-LT
	2	DMC	319	Pistachio Green-VY DK
	2	DMC	333	Blue Violet-VY DK
	2	DMC	340	Blue Violet-MD
	2	DMC	498	Christmas Red-DK
	2	DMC	500	Blue Green-VY DK
	2	DMC	550	Violet-VY DK
	2	DMC	562	Jade-MD
	2	DMC	581	Moss Green
	2	DMC	603	Cranberry
	2	DMC	604	Cranberry-LT
	2	DMC	666	Christmas Red-BRT
	2	DMC	699	Christmas Green
	2	DMC	718	Plum
	2	DMC	720	Orange Spice-DK
	2	DMC	726	Topaz-LT
	2	DMC	730	Olive Green-VY DK
	2	DMC	740	Tangerine
	2	DMC	741	Tangerine-MD
	2	DMC	742	Tangerine-LT
	2	DMC	745	Yellow-LT Pale
	2	DMC	747	Sky Blue-VY LT
	2	DMC	780	Topaz-UL VY DK
	2	DMC	782	Topaz-DK
	2	DMC	796	Royal Blue-DK
	2	DMC	798	Delft Blue-DK
	2	DMC	801	Coffee Brown-DK
	2	DMC	809	Delft Blue
	2	DMC	814	Garnet-DK
	2	DMC	819	Baby Pink-LT
	2	DMC	820	Royal Blue-VY DK
	2	DMC	823	Navy Blue-DK
	2	DMC	827	Blue-VY LT

Symbol	Strands	Type	Number	Color
	2	DMC	890	Pistachio Green-UL DK
	2	DMC	891	Carnation-DK
	2	DMC	904	Parrot Green-VY DK
	2	DMC	906	Parrot Green-MD
	2	DMC	907	Parrot Green-LT
	2	DMC	909	Emerald Green-VY DK
	2	DMC	910	Emerald Green-DK
	2	DMC	912	Emerald Green-LT
	2	DMC	936	Avocado Green-VY DK
	2	DMC	938	Coffee Brown-UL DK
	2	DMC	939	Navy Blue-VY DK
	2	DMC	943	Bright Green-MD
	2	DMC	956	Geranium
	2	DMC	958	Sea Green-DK
	2	DMC	963	Dusty Rose-UL VY LT
	2	DMC	973	Canary-BRT
	2	DMC	977	Golden Brown-LT
	2	DMC	995	Electric Blue-DK
	2	DMC	996	Electric Blue-MD
	2	DMC	3072	Beaver Gray-VY LT
	2	DMC	3371	Black Brown
	2	DMC	3607	Plum-LT
	2	DMC	3609	Plum-UL LT
	2	DMC	3746	Blue Violet-DK
	2	DMC	3747	Blue Violet-VY LT
	2	DMC	3750	Antique Blue-VY DK
	2	DMC	3766	Peacock Blue-LT
	2	DMC	3770	Tawny-VY LT
	2	DMC	3776	Mahogany-LT
	2	DMC	3804	Cyclamen Pink-DK
	2	DMC	3808	Turquoise-UL VY DK
	2	DMC	3830	Terra Cotta-MD
	2	DMC	3837	Lavender-UL DK
	2	DMC	3842	Wedgewood-DK
	2	DMC	3846	Bright Turquoise-LT
	2	DMC	3847	Teal Green-DK
	2	DMC	3852	Straw-VY DK
	2	DMC	3854	Autumn Gold-MD
	2	DMC	B5200	Snow White

Notes:

The middle of this pattern can be found on page 6 and is 94 stitches across and 100 stitches down.

Pattern layout using page numbers in top left.

```

1  2  3  4
5  6  7  8
9 10 11 12

```


Usage Summary

Strands Per Skein: 6

Skein Length: 313.0 in

Type	Number	Full	Half	Quarter	Petite	Back(in)	Str(in)	Spec(in)	French	Bead	Skein Est.
DMC 150	150	326	0	0	0	0.0	0.0	0.0	0	0	1.000
DMC 154	154	391	0	0	0	0.0	0.0	0.0	0	0	1.000
DMC 155	155	143	0	0	0	0.0	0.0	0.0	0	0	1.000
DMC 158	158	247	0	0	0	0.0	0.0	0.0	0	0	1.000
DMC 159	159	54	0	0	0	0.0	0.0	0.0	0	0	1.000
DMC 161	161	69	0	0	0	0.0	0.0	0.0	0	0	1.000
DMC 166	166	590	0	0	0	0.0	0.0	0.0	0	0	1.000
DMC 208	208	588	0	0	0	0.0	0.0	0.0	0	0	1.000
DMC 209	209	522	0	0	0	0.0	0.0	0.0	0	0	1.000
DMC 210	210	1207	0	0	0	0.0	0.0	0.0	0	0	1.000
DMC 307	307	1155	0	0	0	0.0	0.0	0.0	0	0	1.000
DMC 310	310	1613	0	0	0	0.0	0.0	0.0	0	0	1.000
DMC 318	318	113	0	0	0	0.0	0.0	0.0	0	0	1.000
DMC 319	319	155	0	0	0	0.0	0.0	0.0	0	0	1.000
DMC 333	333	335	0	0	0	0.0	0.0	0.0	0	0	1.000
DMC 340	340	228	0	0	0	0.0	0.0	0.0	0	0	1.000
DMC 498	498	191	0	0	0	0.0	0.0	0.0	0	0	1.000
DMC 500	500	396	0	0	0	0.0	0.0	0.0	0	0	1.000
DMC 550	550	304	0	0	0	0.0	0.0	0.0	0	0	1.000
DMC 562	562	124	0	0	0	0.0	0.0	0.0	0	0	1.000
DMC 581	581	170	0	0	0	0.0	0.0	0.0	0	0	1.000
DMC 603	603	527	0	0	0	0.0	0.0	0.0	0	0	1.000
DMC 604	604	149	0	0	0	0.0	0.0	0.0	0	0	1.000
DMC 666	666	243	0	0	0	0.0	0.0	0.0	0	0	1.000
DMC 699	699	216	0	0	0	0.0	0.0	0.0	0	0	1.000
DMC 718	718	311	0	0	0	0.0	0.0	0.0	0	0	1.000
DMC 720	720	215	0	0	0	0.0	0.0	0.0	0	0	1.000
DMC 726	726	284	0	0	0	0.0	0.0	0.0	0	0	1.000
DMC 730	730	65	0	0	0	0.0	0.0	0.0	0	0	1.000
DMC 740	740	126	0	0	0	0.0	0.0	0.0	0	0	1.000
DMC 741	741	243	0	0	0	0.0	0.0	0.0	0	0	1.000
DMC 742	742	200	0	0	0	0.0	0.0	0.0	0	0	1.000
DMC 745	745	191	0	0	0	0.0	0.0	0.0	0	0	1.000
DMC 747	747	164	0	0	0	0.0	0.0	0.0	0	0	1.000
DMC 780	780	112	0	0	0	0.0	0.0	0.0	0	0	1.000
DMC 782	782	85	0	0	0	0.0	0.0	0.0	0	0	1.000
DMC 796	796	118	0	0	0	0.0	0.0	0.0	0	0	1.000
DMC 798	798	424	0	0	0	0.0	0.0	0.0	0	0	1.000
DMC 801	801	134	0	0	0	0.0	0.0	0.0	0	0	1.000
DMC 809	809	257	0	0	0	0.0	0.0	0.0	0	0	1.000
DMC 814	814	221	0	0	0	0.0	0.0	0.0	0	0	1.000
DMC 819	819	434	0	0	0	0.0	0.0	0.0	0	0	1.000
DMC 820	820	414	0	0	0	0.0	0.0	0.0	0	0	1.000
DMC 823	823	398	0	0	0	0.0	0.0	0.0	0	0	1.000
DMC 827	827	414	0	0	0	0.0	0.0	0.0	0	0	1.000
DMC 890	890	265	0	0	0	0.0	0.0	0.0	0	0	1.000
DMC 891	891	591	0	0	0	0.0	0.0	0.0	0	0	1.000
DMC 904	904	265	0	0	0	0.0	0.0	0.0	0	0	1.000
DMC 906	906	837	0	0	0	0.0	0.0	0.0	0	0	1.000
DMC 907	907	1053	0	0	0	0.0	0.0	0.0	0	0	1.000
DMC 909	909	240	0	0	0	0.0	0.0	0.0	0	0	1.000

Type	Number	Full	Half	Quarter	Petite	Back(in)	Str(in)	Spec(in)	French	Bead	Skein Est.
DMC	910	244	0	0	0	0.0	0.0	0.0	0	0	1.000
DMC	912	204	0	0	0	0.0	0.0	0.0	0	0	1.000
DMC	936	157	0	0	0	0.0	0.0	0.0	0	0	1.000
DMC	938	123	0	0	0	0.0	0.0	0.0	0	0	1.000
DMC	939	2022	0	0	0	0.0	0.0	0.0	0	0	2.000
DMC	943	285	0	0	0	0.0	0.0	0.0	0	0	1.000
DMC	956	325	0	0	0	0.0	0.0	0.0	0	0	1.000
DMC	958	153	0	0	0	0.0	0.0	0.0	0	0	1.000
DMC	963	293	0	0	0	0.0	0.0	0.0	0	0	1.000
DMC	973	156	0	0	0	0.0	0.0	0.0	0	0	1.000
DMC	977	181	0	0	0	0.0	0.0	0.0	0	0	1.000
DMC	995	288	0	0	0	0.0	0.0	0.0	0	0	1.000
DMC	996	1207	0	0	0	0.0	0.0	0.0	0	0	1.000
DMC	3072	125	0	0	0	0.0	0.0	0.0	0	0	1.000
DMC	3371	358	0	0	0	0.0	0.0	0.0	0	0	1.000
DMC	3607	397	0	0	0	0.0	0.0	0.0	0	0	1.000
DMC	3609	934	0	0	0	0.0	0.0	0.0	0	0	1.000
DMC	3746	88	0	0	0	0.0	0.0	0.0	0	0	1.000
DMC	3747	112	0	0	0	0.0	0.0	0.0	0	0	1.000
DMC	3750	76	0	0	0	0.0	0.0	0.0	0	0	1.000
DMC	3766	64	0	0	0	0.0	0.0	0.0	0	0	1.000
DMC	3770	138	0	0	0	0.0	0.0	0.0	0	0	1.000
DMC	3776	81	0	0	0	0.0	0.0	0.0	0	0	1.000
DMC	3804	492	0	0	0	0.0	0.0	0.0	0	0	1.000
DMC	3808	184	0	0	0	0.0	0.0	0.0	0	0	1.000
DMC	3830	78	0	0	0	0.0	0.0	0.0	0	0	1.000
DMC	3837	464	0	0	0	0.0	0.0	0.0	0	0	1.000
DMC	3842	127	0	0	0	0.0	0.0	0.0	0	0	1.000
DMC	3846	546	0	0	0	0.0	0.0	0.0	0	0	1.000
DMC	3847	175	0	0	0	0.0	0.0	0.0	0	0	1.000
DMC	3852	298	0	0	0	0.0	0.0	0.0	0	0	1.000
DMC	3854	74	0	0	0	0.0	0.0	0.0	0	0	1.000
DMC	B5200	593	0	0	0	0.0	0.0	0.0	0	0	1.000