

Meadow in the Alps



* Original image© Bessi - Pixabay
Cross Stitch Design by Tereena Clarke.

Completed Size = 300w x 195h Stitches

14 Count, 21.5w x 14h inches (55cm x 36cm)

16 Count, 19w x 12.5h inches (48cm x 32cm)

18 Count, 17w x 11h inches (43cm x 28cm)

Uses 84 DMC cotton colours. Only full cross stitches are used in this pattern.

Pattern Instructions

* This pattern can be worked on any fabric type, colour or count you prefer. To work out the size of the finished article, take the number of stitches wide and high and divide it by the count of your fabric (e.g. 14,16,18 count aida etc) to get the size in inches. Times it by 2.54 to get centimetres. We have the sizes in inches shown on the previous page. Also leave at least a few inches of fabric around each side of the design to assist in framing. The higher the fabric count the smaller the completed project will be.

* To put the pattern together look in the top and bottom corners. The page numbers in brackets show which page number it joins up to. Page 1 always starts at the top left hand side of the pattern. Our pages also have a shaded grey section. This indicates a 3 row overlap from adjoining pages to assist with reading the pattern. PLEASE DO NOT RESTITCH THIS AREA.

* You should begin at the centre of the pattern. To find the centre of the pattern it is just a matter of laying the pattern out and locating the arrows at the top and left hand side of the patterns, they are determined by dividing the stitch numbers wide and high in half. Where the two points meet in the middle, that is the centre.

* If you need more assistance to find the middle of your pattern or the page layout, please see the notes section on the colour symbol chart. The easiest way to stitch this pattern, as it has multiple pages, is to stitch one page at a time.

* We suggest using two strands of floss for each stitch and one strand for backstitching if the pattern calls for it.

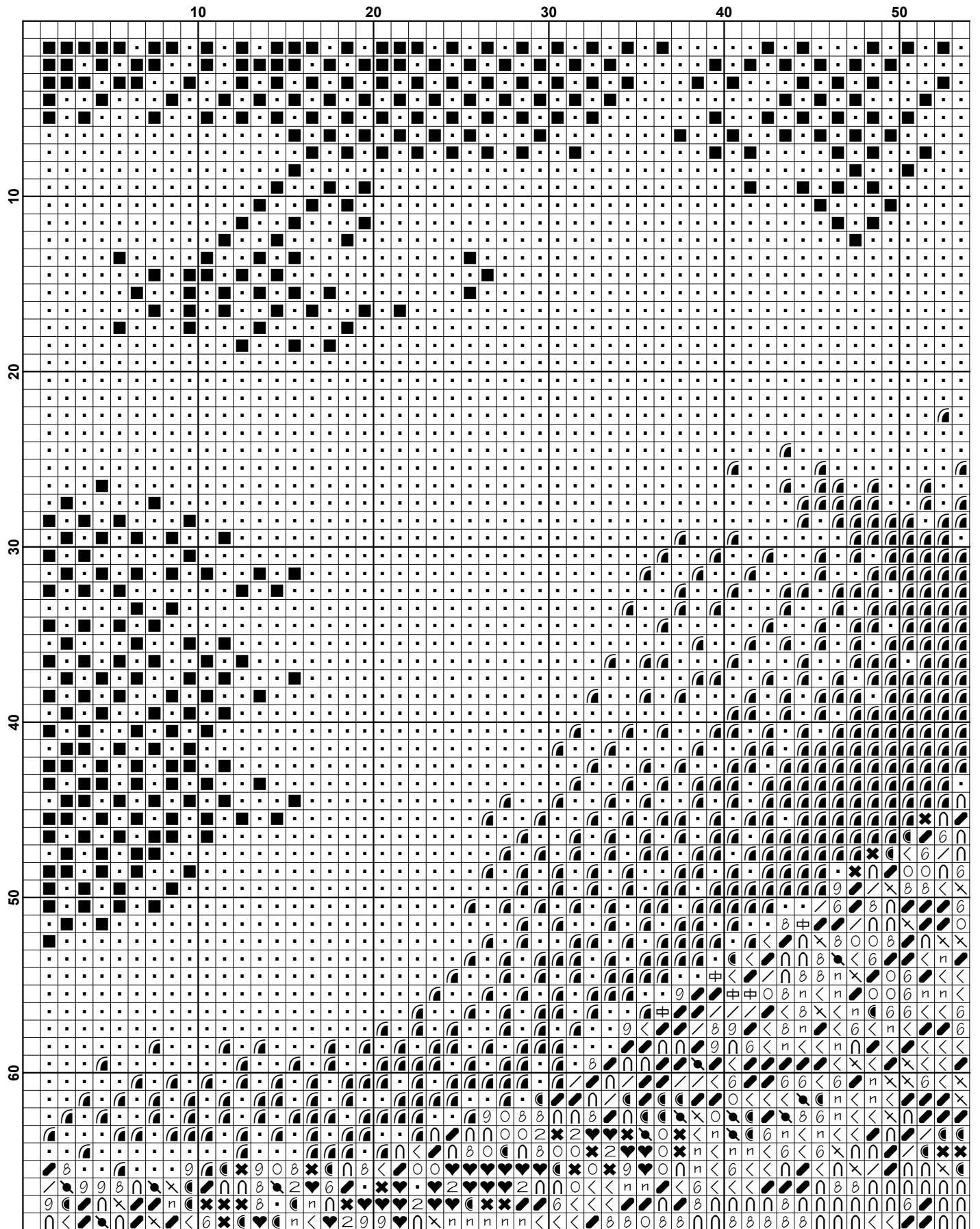
We hope you enjoy stitching our pattern.

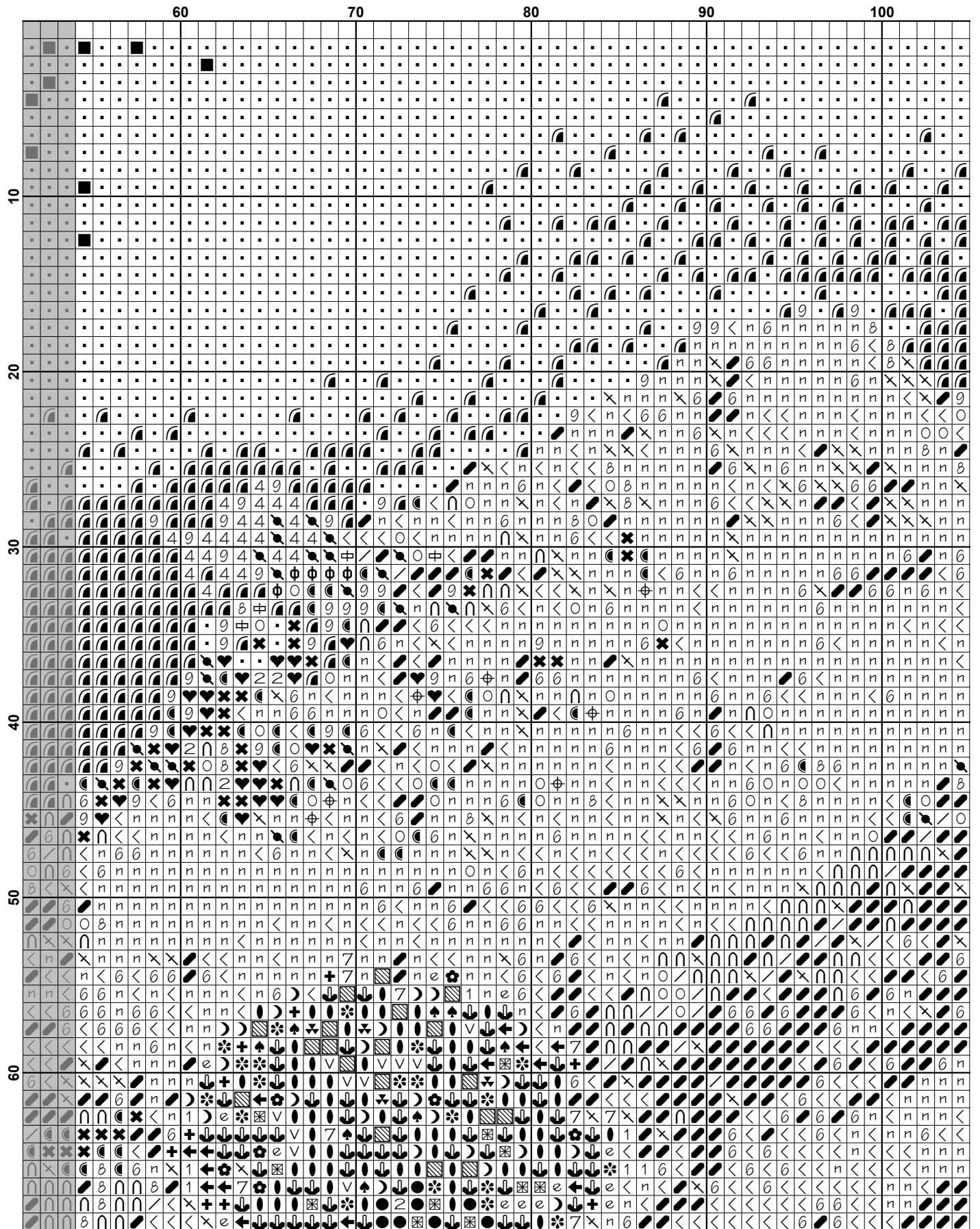
Thanks and Best Wishes
Tereena Clarke

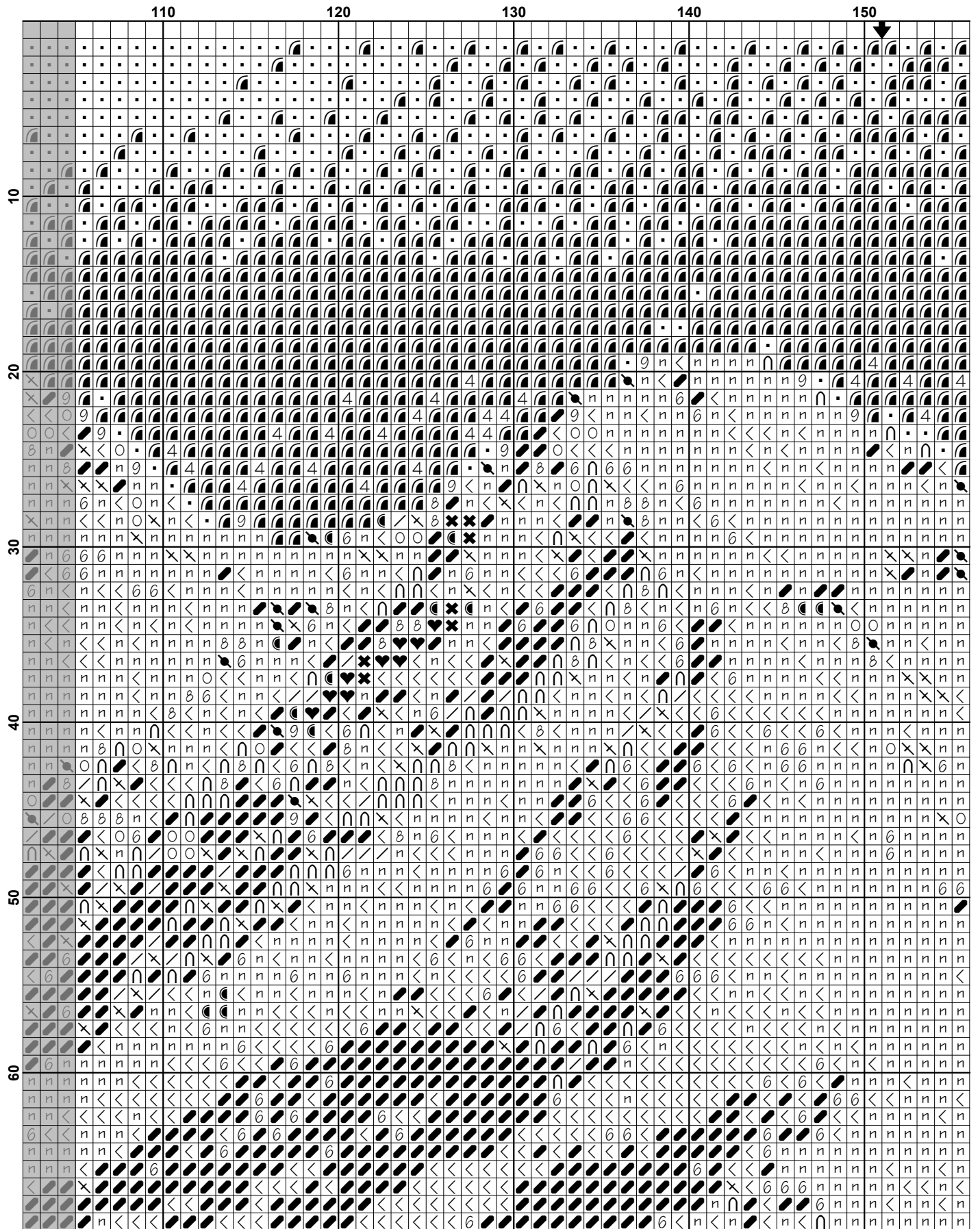
Artecy Cross Stitch
Po Box 3474
Tuggerah, NSW 2259
Australia

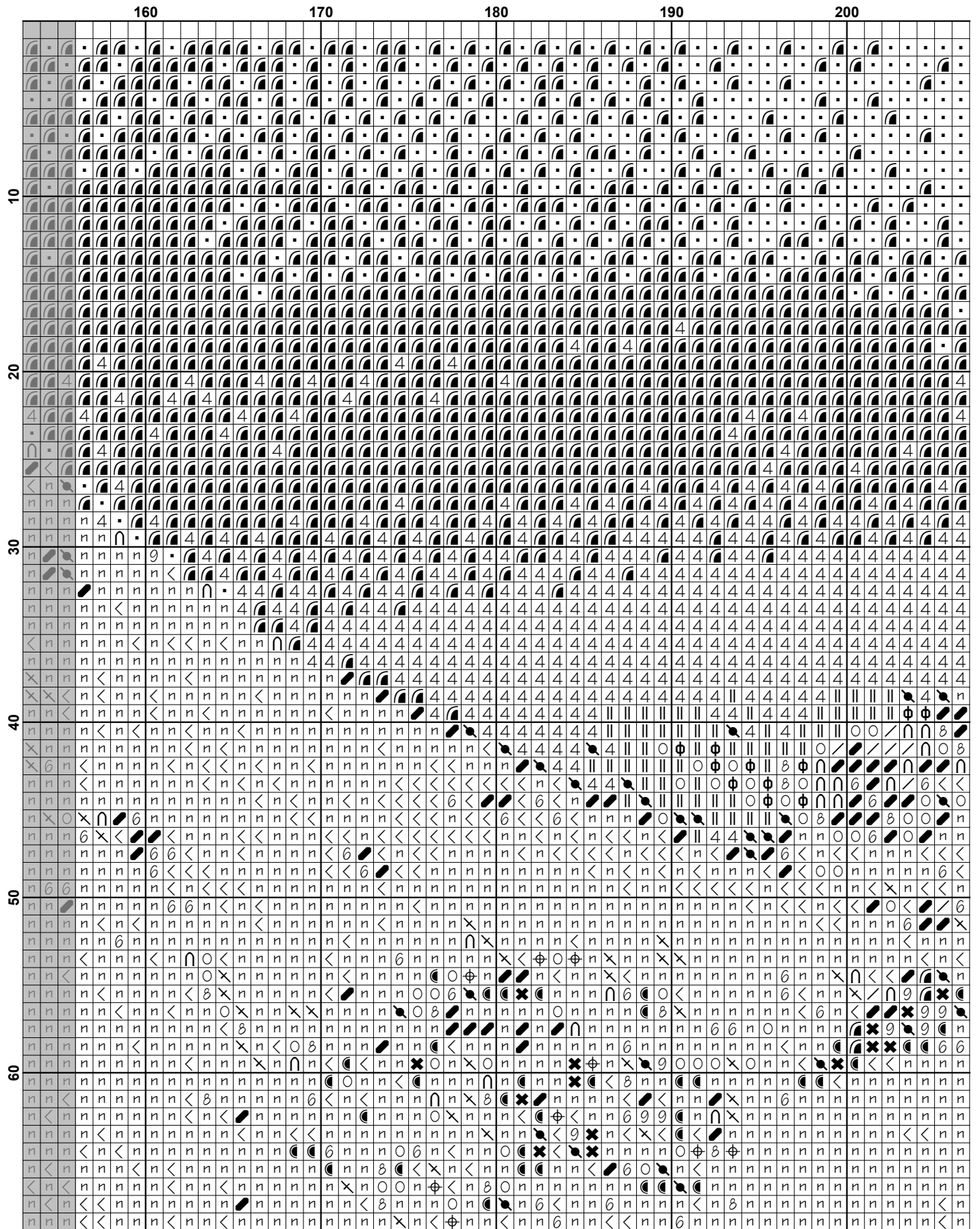
Websites: www.artecy.com and www.artecyshop.com
Email: artecy@artecy.com or stitch@artecyshop.com

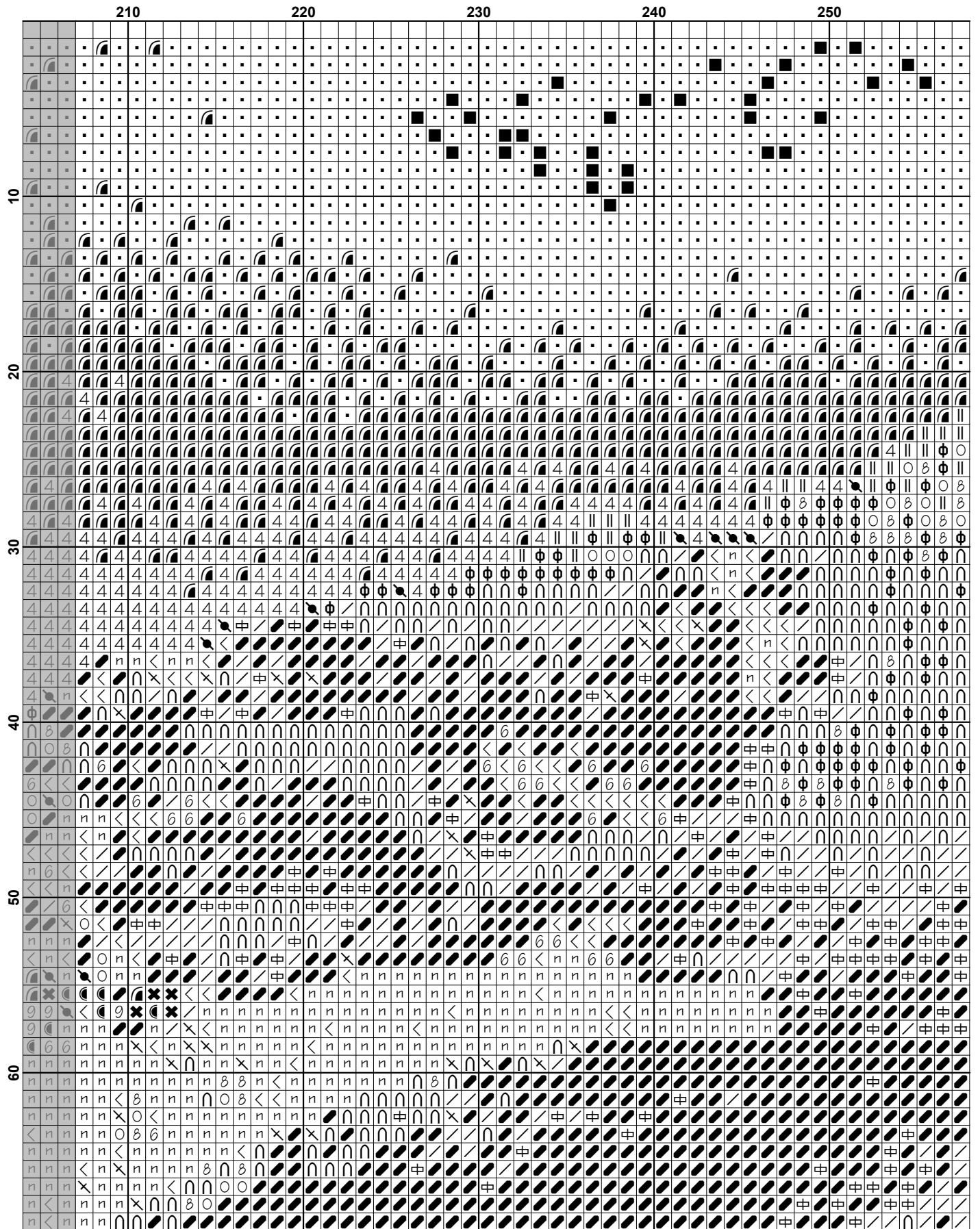
*Patterns are strictly for personal use only. It is against our copyright to make kits for sale from our designs or to sell, copy or redistribute this pattern in any form. You may not upload our patterns to any internet forums or groups or any other website. You may make 1 copy of this pattern for a working copy for your own personal use if needed.

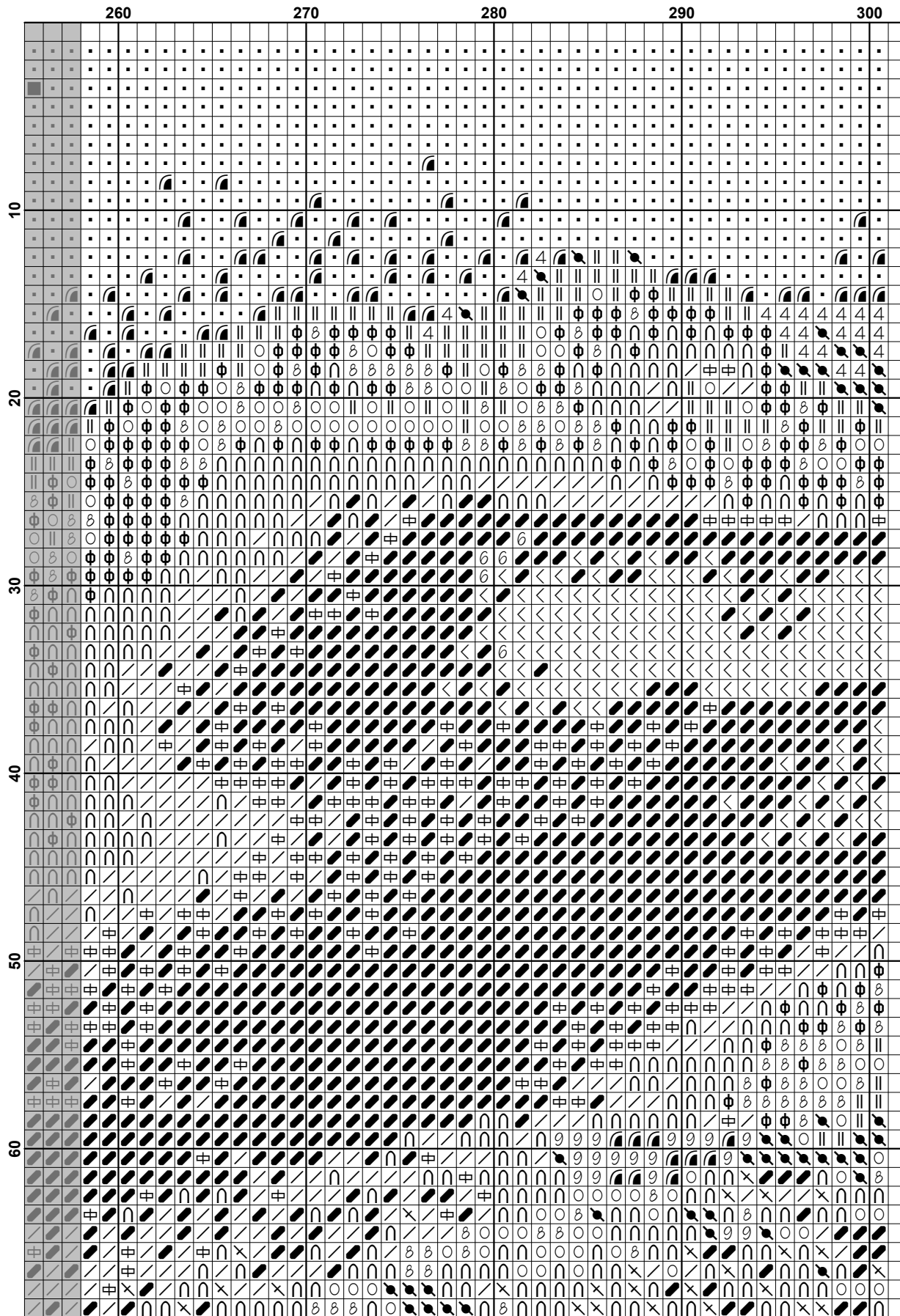


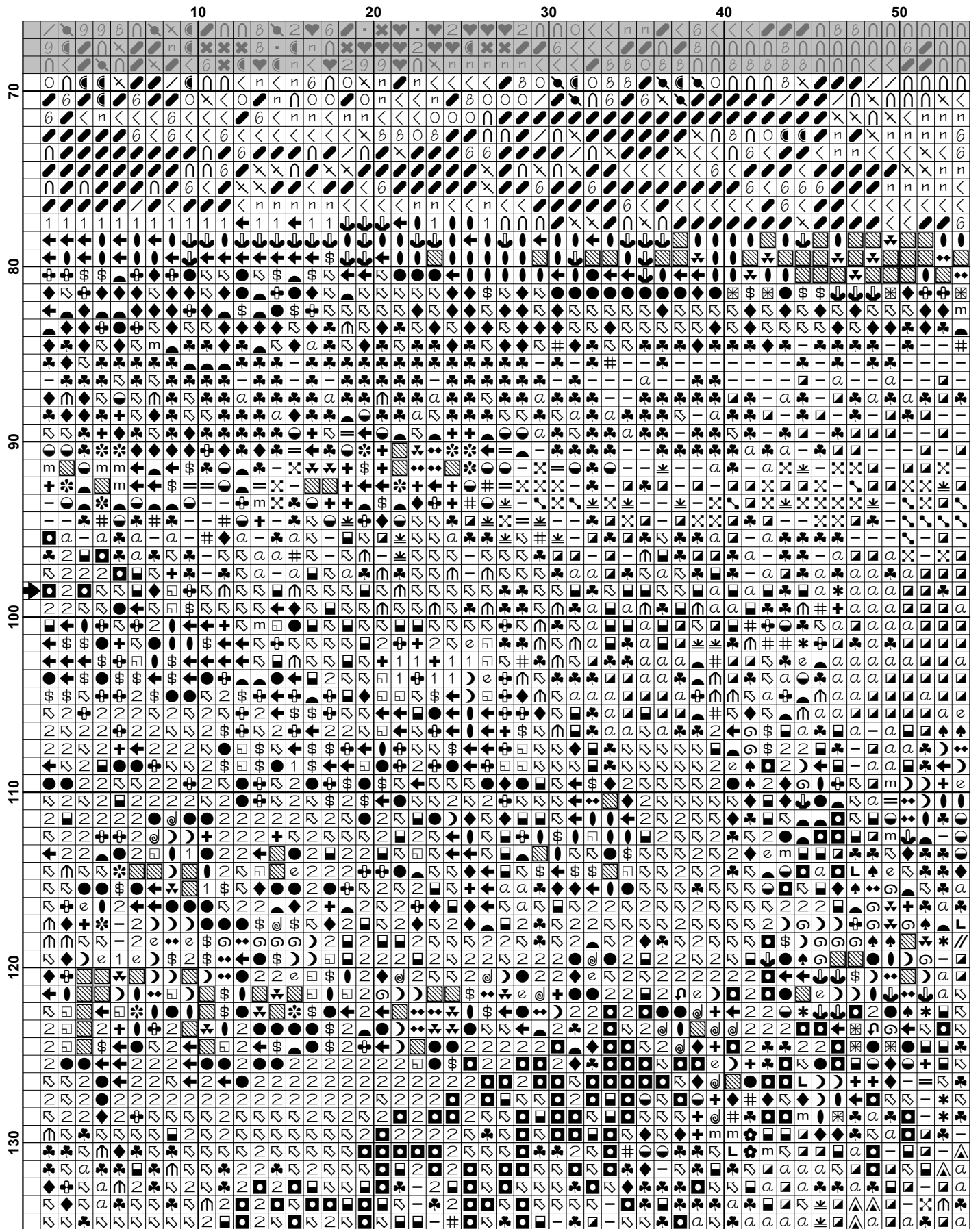


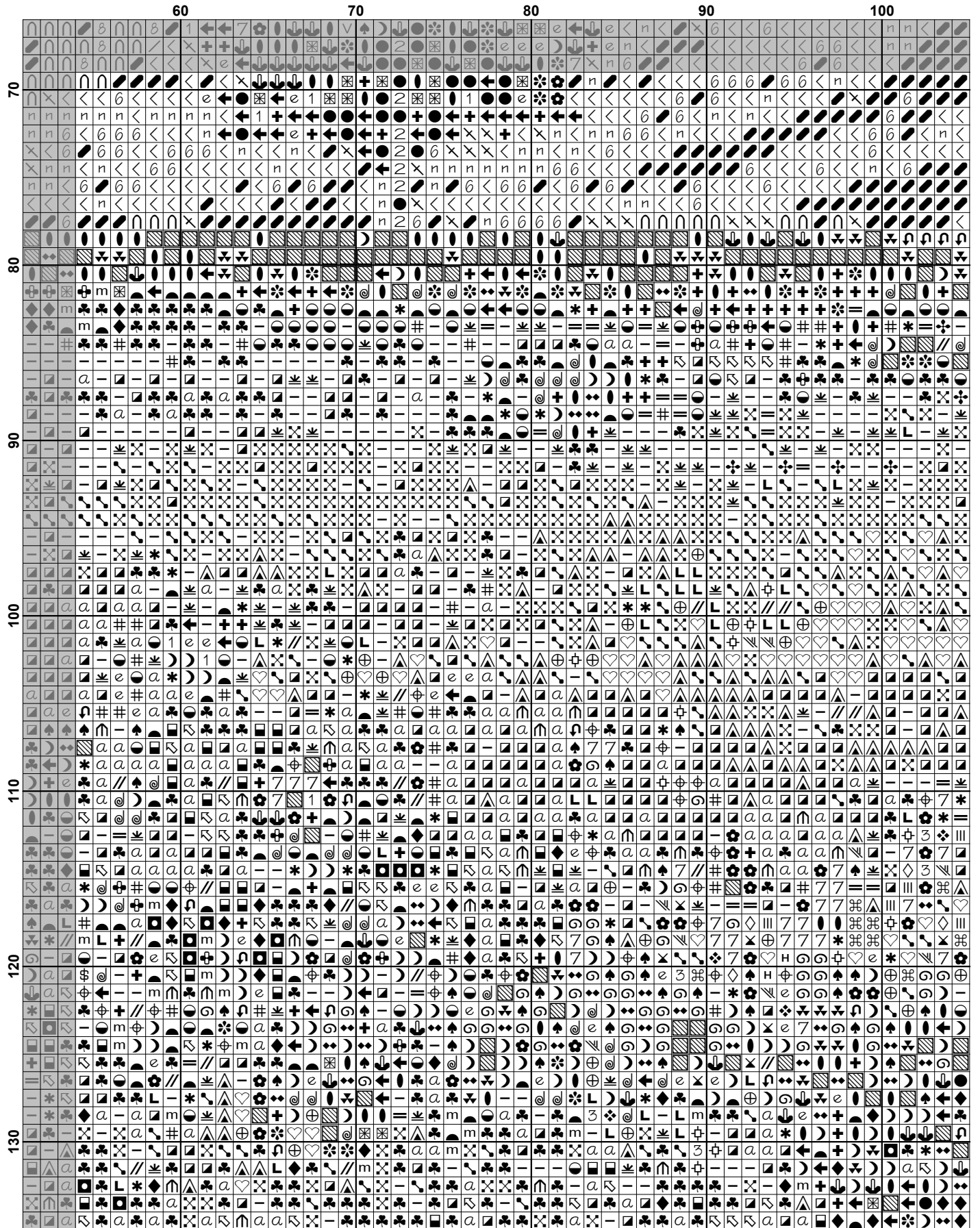


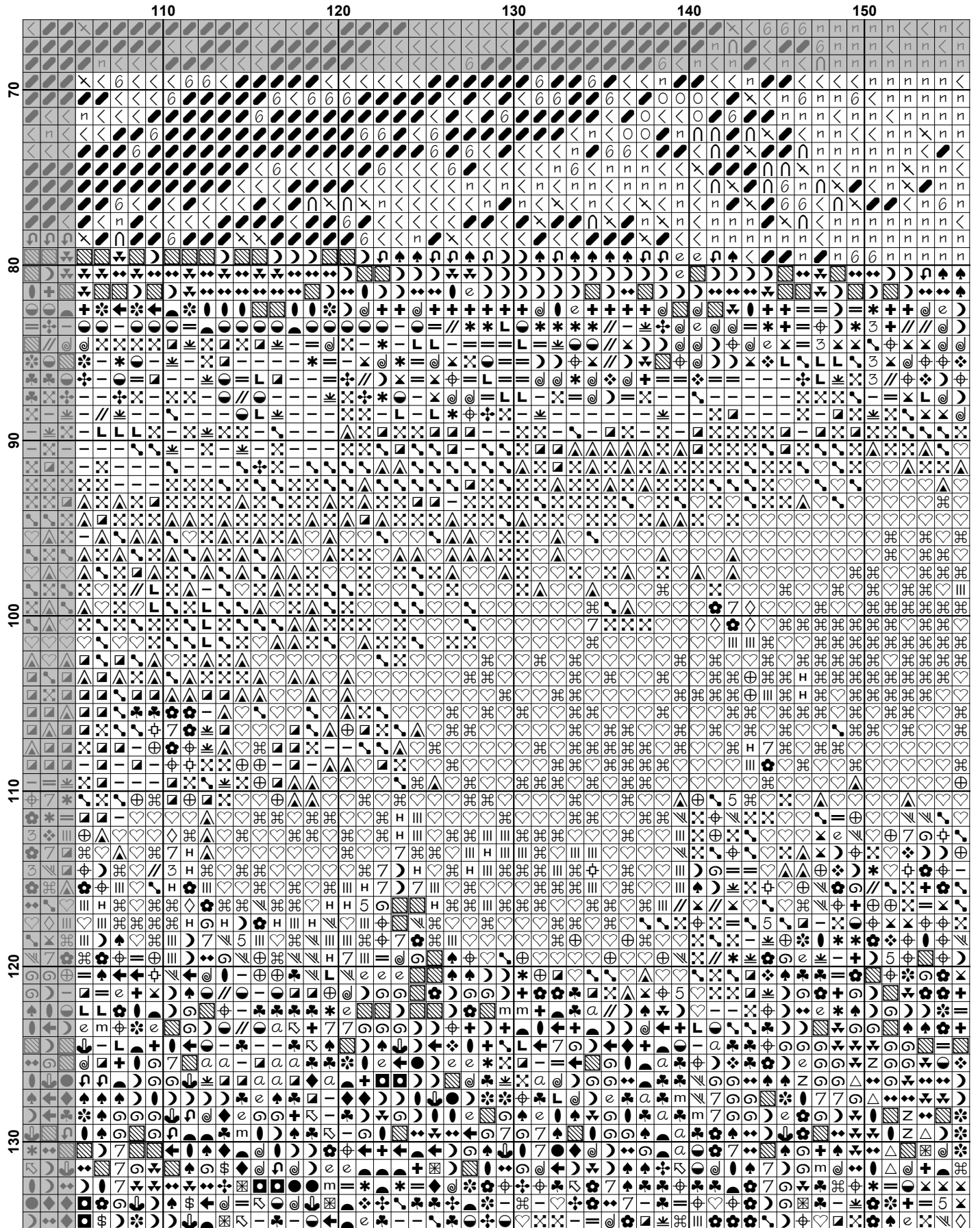


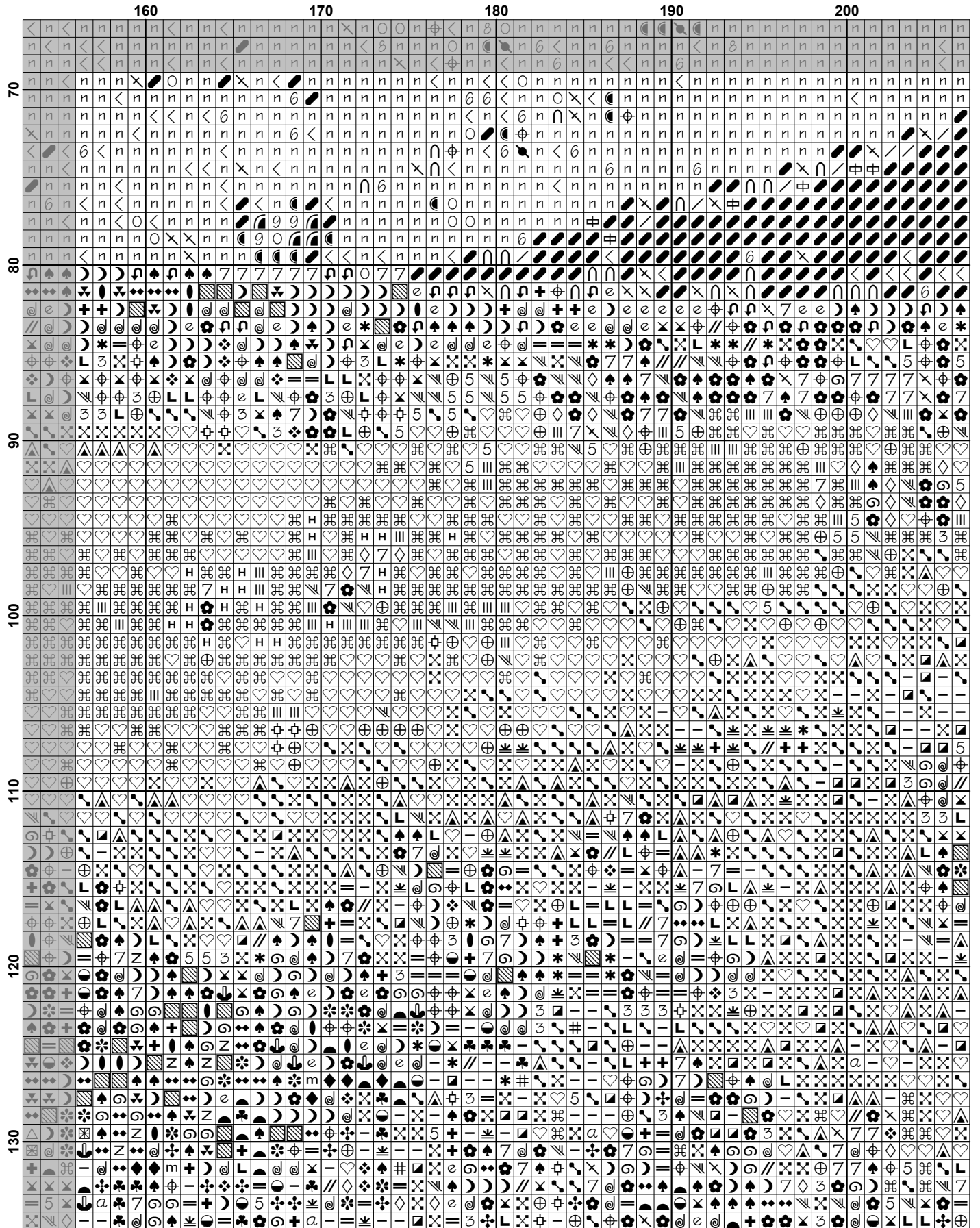


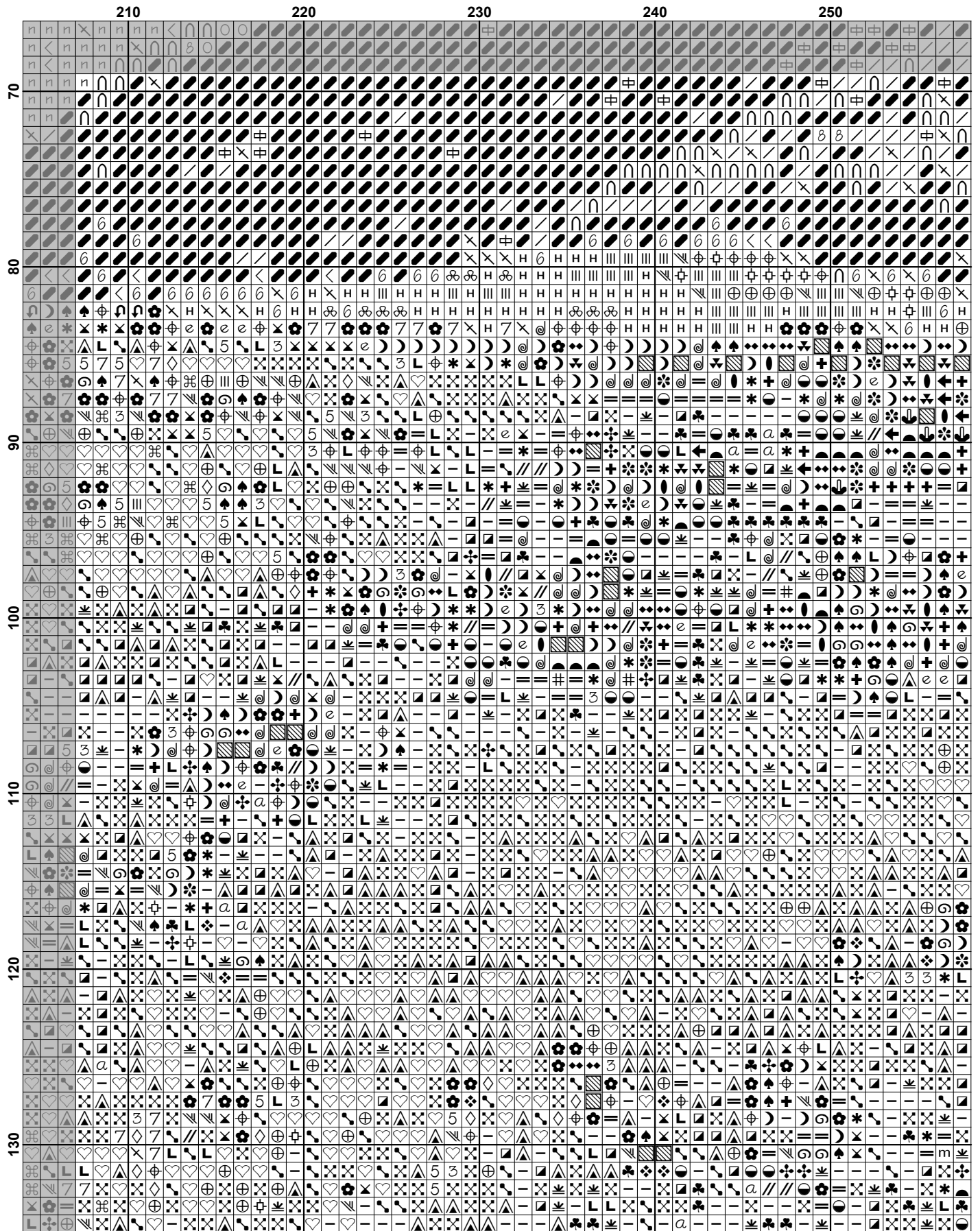


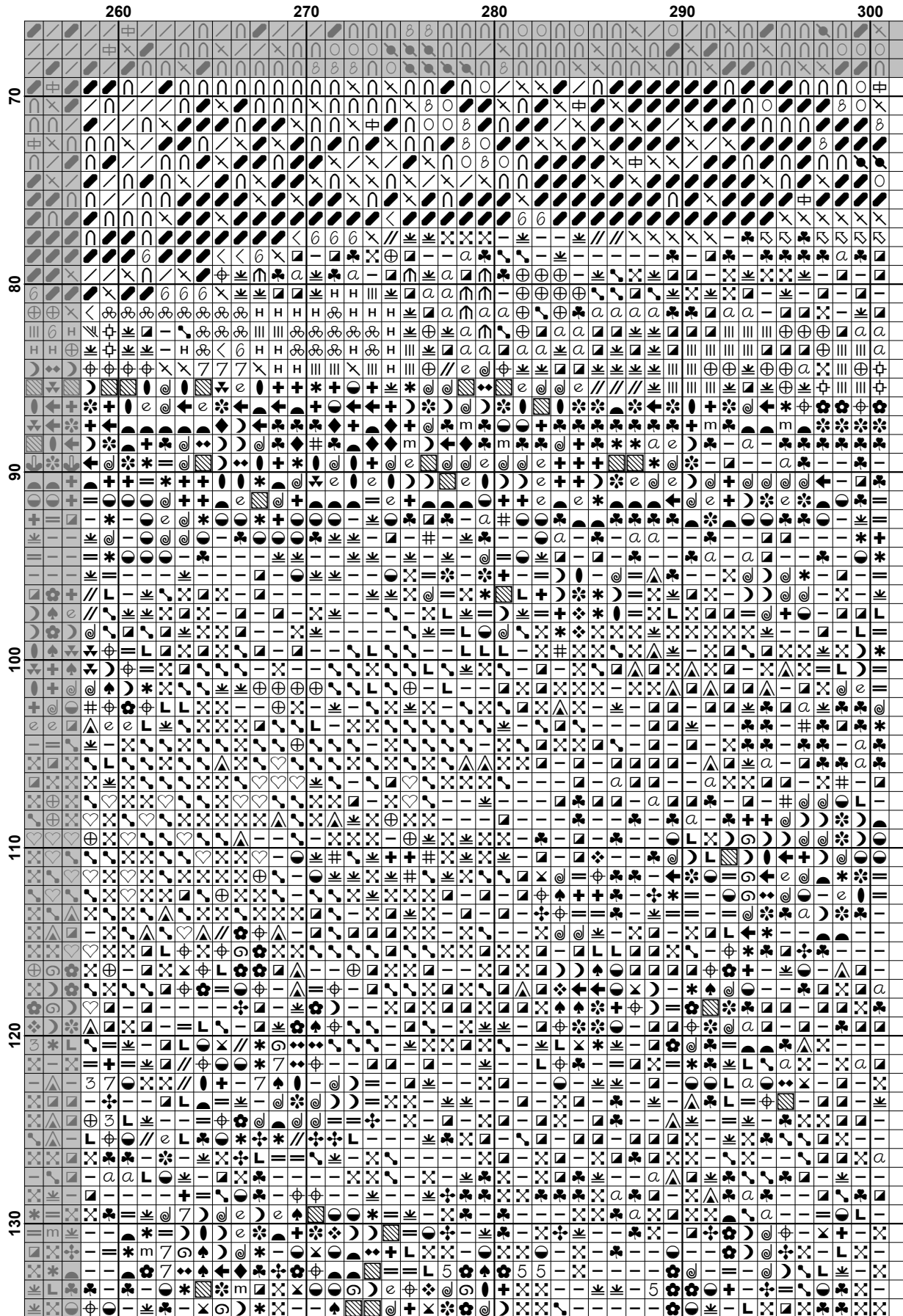


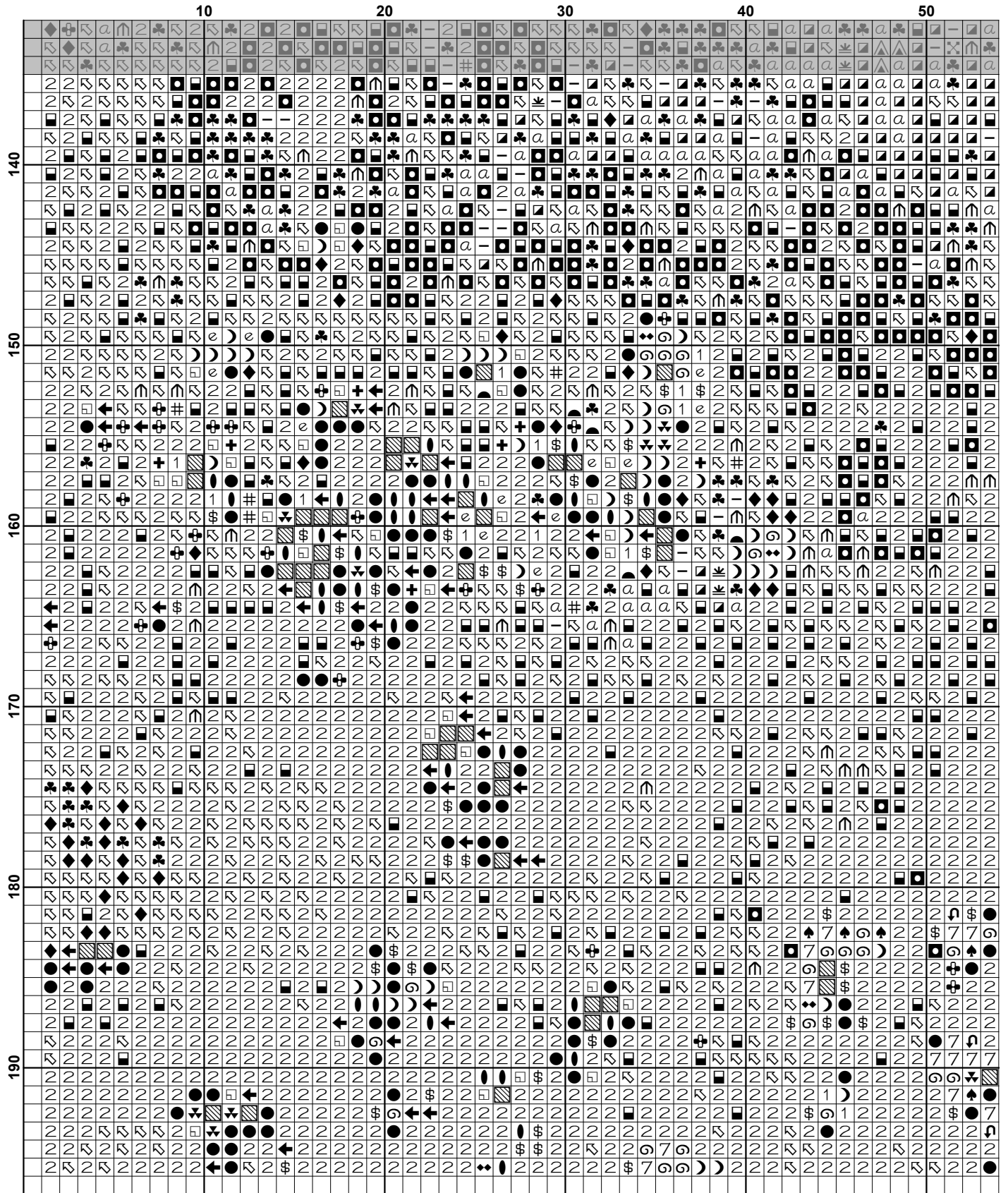


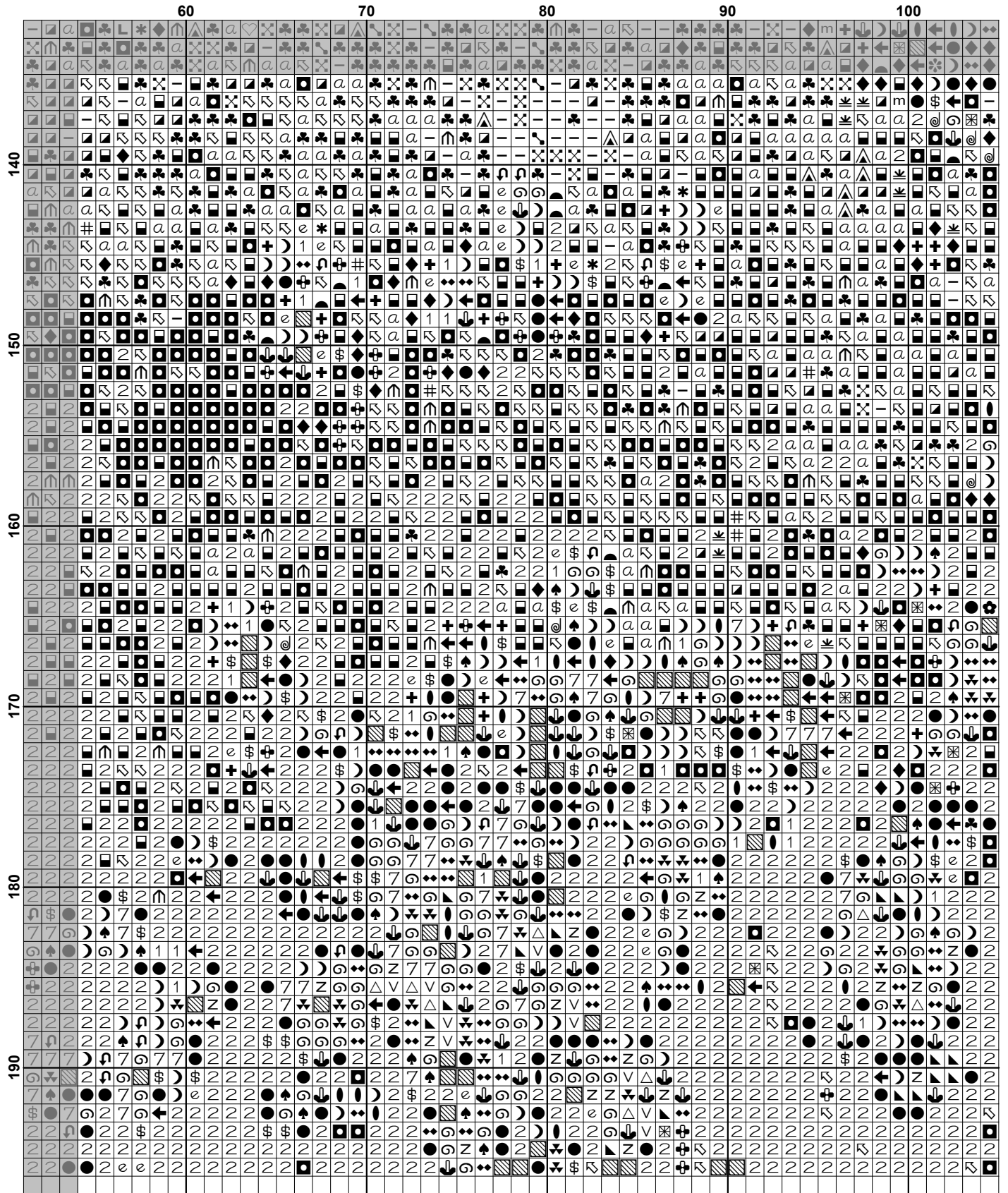


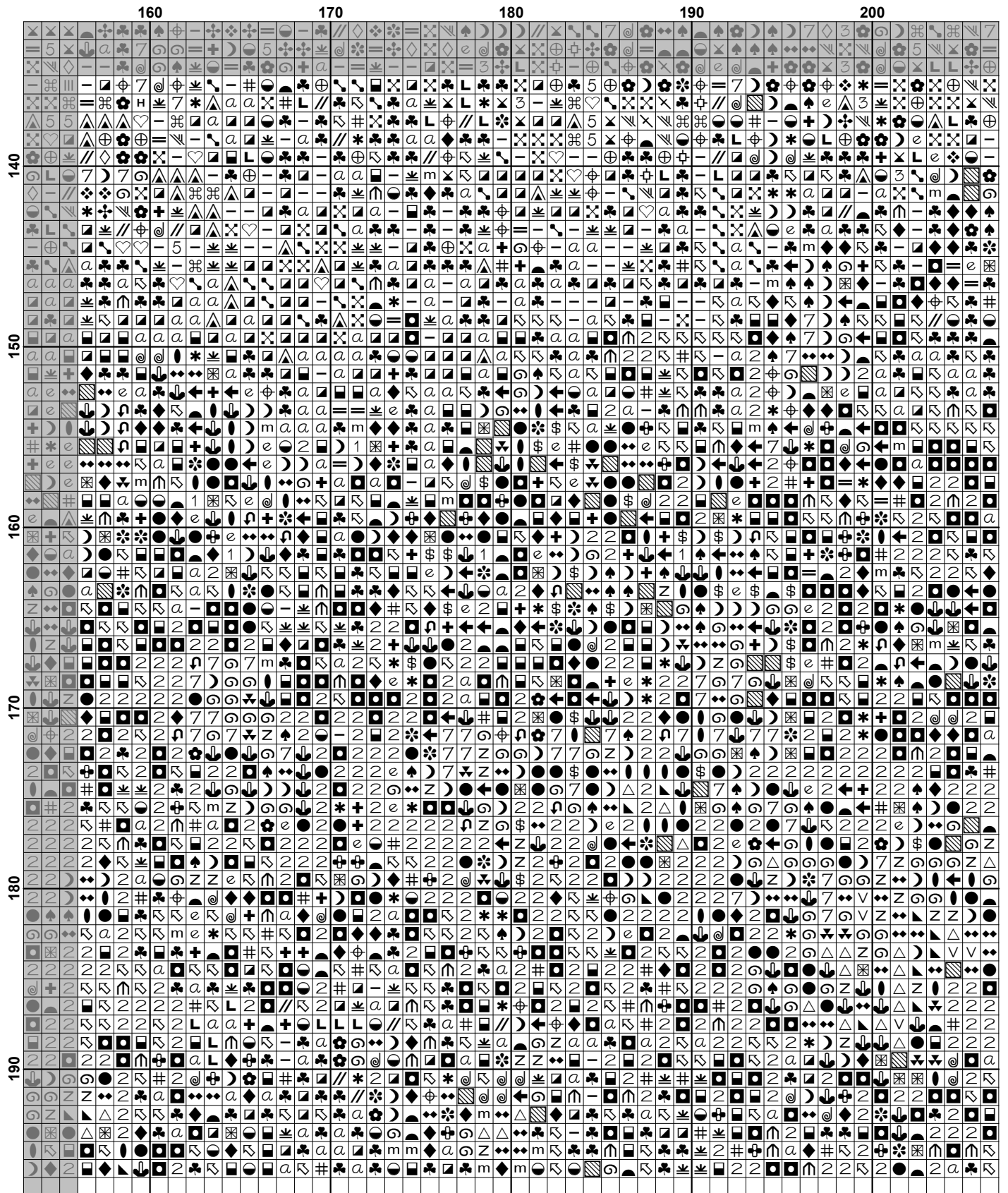


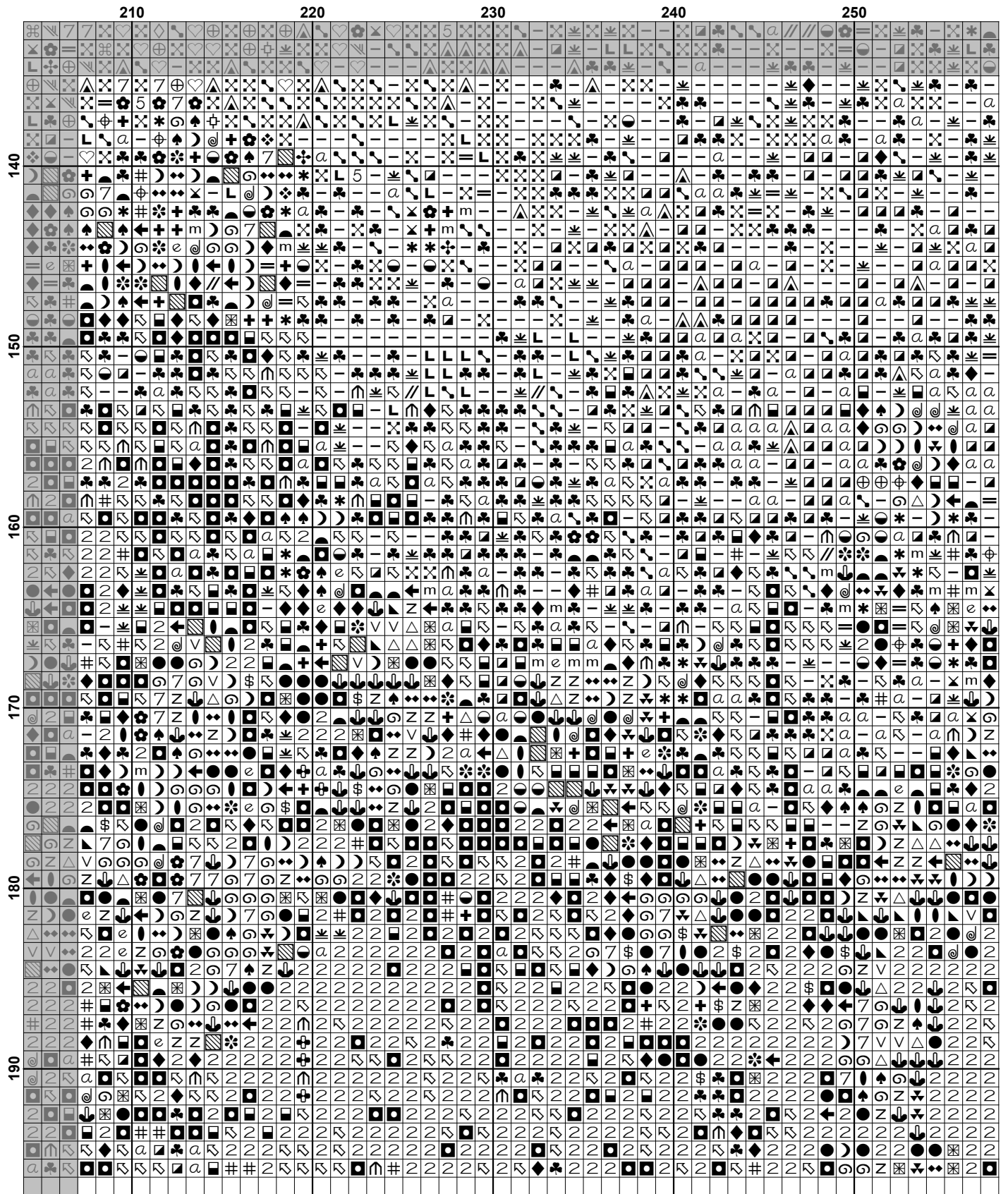


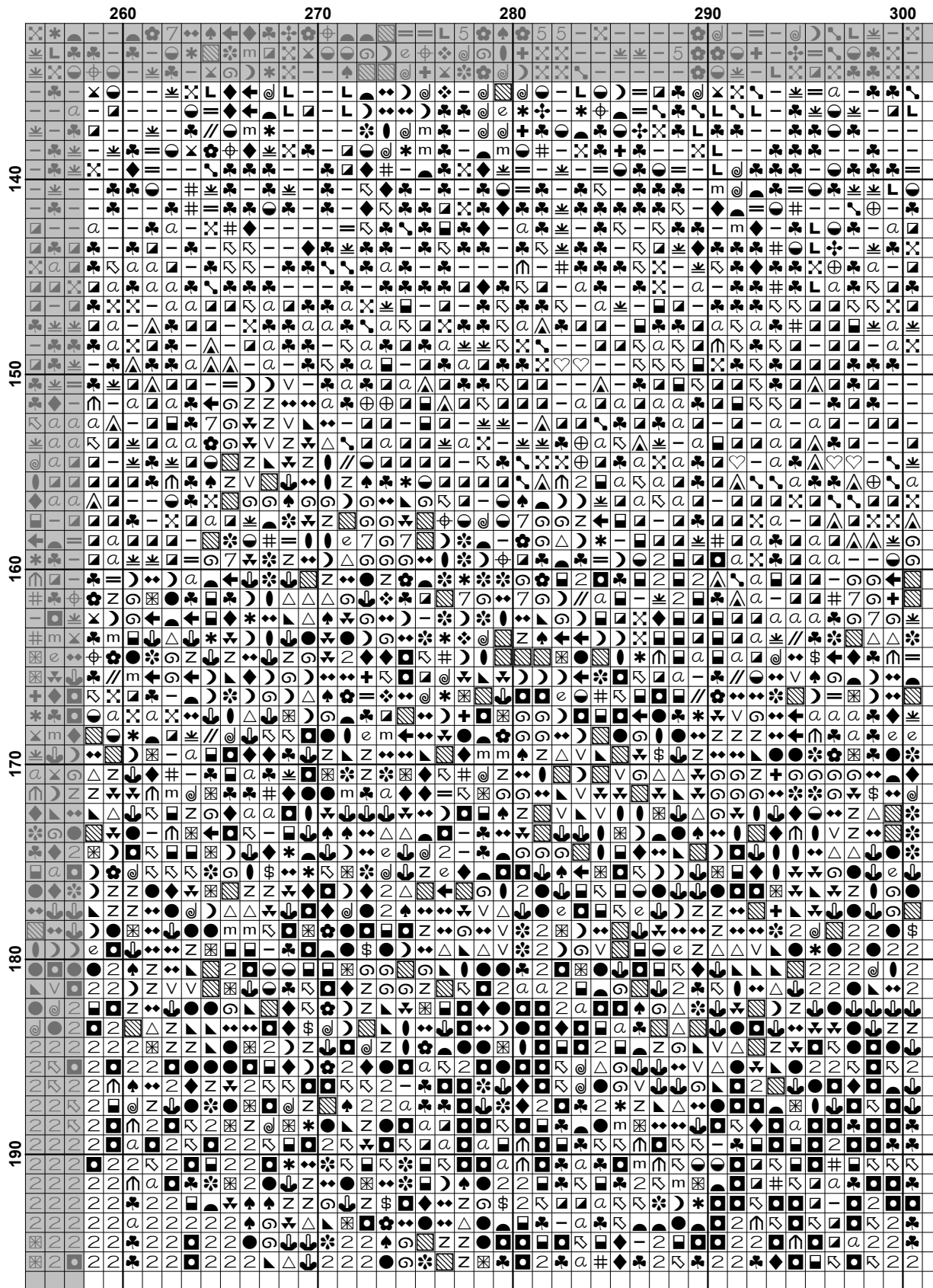













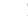

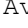
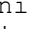
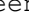
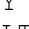















Pattern Name: Meadow in the Alps
Designed By: Image by Bessi - Pixabay
Company: Artecy Cross Stitch
Copyright: Copyright Artecy Cross Stitch. All rights Reserved.
Fabric: Aida 14, White
 300w X 195h Stitches
Size(s): 14 Count, 21-3/8w X 13-7/8h in
 16 Count, 18-3/4w X 12-1/8h in
 18 Count, 16-5/8w X 10-3/4h in

Floss Used for Full Stitches:

Symbol	Strands	Type	Number	Color
	●	2	DMC 154	Grape-VY DK
	0	2	DMC 156	Blue Violet-MD LT
	/	2	DMC 157	Cornflower Blue-VY LT
	⌒	2	DMC 161	Gray Blue
	2	2	DMC 310	Black
	⊠	2	DMC 327	Violet-VY DK
	♥	2	DMC 336	Navy Blue
	∩	2	DMC 341	Blue Violet-LT
	3	2	DMC 370	Mustard-MD
	//	2	DMC 372	Mustard-LT
	◇	2	DMC 436	Tan
	⌋	2	DMC 470	Avocado Green-LT
	⊕	2	DMC 471	Avocado Green-VY LT
	\$	2	DMC 550	Violet-VY DK
	1	2	DMC 552	Violet-MD
	⌋	2	DMC 553	Violet
	-	2	DMC 580	Moss Green-DK
	X	2	DMC 581	Moss Green
	△	2	DMC 600	Cranberry-VY DK
	▽	2	DMC 601	Cranberry-DK
	▴	2	DMC 602	Cranberry-MD
	⊙	2	DMC 603	Cranberry
	●	2	DMC 610	Drab Brown-DK
	//	2	DMC 640	Beige Gray-VY DK
	▧	2	DMC 718	Plum
	⌘	2	DMC 746	Off White
	6	2	DMC 762	Pearl Gray-VY LT
	◐	2	DMC 779	Cocoa-DK
	X	2	DMC 791	Cornflower Blue-VY DK
	9	2	DMC 792	Cornflower Blue-DK
	⌋	2	DMC 793	Cornflower Blue-MD
	8	2	DMC 794	Cornflower Blue-LT
	.	2	DMC 796	Royal Blue-DK
	⌒	2	DMC 797	Royal Blue
	4	2	DMC 798	Delft Blue-DK
		2	DMC 799	Delft Blue-MD
	中	2	DMC 800	Delft Blue-Pale
	φ	2	DMC 809	Delft Blue
	■	2	DMC 820	Royal Blue-VY DK
	5	2	DMC 833	Golden Olive-LT
	✚	2	DMC 869	Hazel nut Brown-VY DK
	▣	2	DMC 890	Pistachio Green-UL DK
	⌋	2	DMC 895	Hunter Green-VY DK
	m	2	DMC 898	Coffee Brown-VY DK
	⊠	2	DMC 902	Garnet-VY DK

Symbol	Strands	Type	Number	Color
	a	2	DMC 904	Parrot Green-VY DK
		2	DMC 905	Parrot Green-DK
		2	DMC 906	Parrot Green-MD
		2	DMC 907	Parrot Green-LT
		2	DMC 915	Plum-DK
		2	DMC 917	Plum-MD
		2	DMC 934	Black Avocado Green
		2	DMC 936	Avocado Green-VY DK
	Z	2	DMC 956	Geranium
	L	2	DMC 3012	Khaki Green-MD
		2	DMC 3031	Mocha Brown-VY DK
	H	2	DMC 3047	Yellow Beige-LT
		2	DMC 3346	Hunter Green
		2	DMC 3348	Yellow Green-LT
	#	2	DMC 3362	Pine Green-DK
		2	DMC 3364	Pine Green
		2	DMC 3371	Black Brown
		2	DMC 3607	Plum-LT
	7	2	DMC 3609	Plum-UL LT
		2	DMC 3688	Mauve-MD
	@	2	DMC 3726	Antique Mauve-DK
	x	2	DMC 3743	Antique Violet-VY LT
		2	DMC 3747	Blue Violet-VY LT
	<	2	DMC 3756	Baby Blue-UL VY LT
		2	DMC 3772	Desert Sand-VY DK
		2	DMC 3799	Pewter Gray-VY DK
		2	DMC 3803	Mauve-MD
		2	DMC 3804	Cyclamen Pink-DK
		2	DMC 3805	Cyclamen Pink
		2	DMC 3806	Cyclamen Pink-LT
		2	DMC 3819	Moss Green-LT
		2	DMC 3834	Grape-DK
	e	2	DMC 3835	Grape-MD
	*	2	DMC 3860	Cocoa
		2	DMC 3861	Cocoa-LT
	=	2	DMC 3862	Mocha Beige-DK
	x	2	DMC 3863	Mocha Beige-MD
	n	2	DMC 3865	Winter White

Notes:

The middle of this pattern can be found on page 9 and is 151 stitches across and 99 stitches down.

Pattern layout using page numbers in top left.

```

1  2  3  4  5  6
7  8  9 10 11 12
13 14 15 16 17 18

```

Usage Summary

Strands Per Skein: 6

Skein Length: 313.0 in

Type	Number	Full	Half	Quarter	Petite	Back(in)	Str(in)	Spec(in)	French	Bead	Skein Est.
DMC 154	154	713	0	0	0	0.0	0.0	0.0	0	0	1.000
DMC 156	156	308	0	0	0	0.0	0.0	0.0	0	0	1.000
DMC 157	157	611	0	0	0	0.0	0.0	0.0	0	0	1.000
DMC 161	161	147	0	0	0	0.0	0.0	0.0	0	0	1.000
DMC 310	310	3447	0	0	0	0.0	0.0	0.0	0	0	2.000
DMC 327	327	69	0	0	0	0.0	0.0	0.0	0	0	1.000
DMC 336	336	57	0	0	0	0.0	0.0	0.0	0	0	1.000
DMC 341	341	1109	0	0	0	0.0	0.0	0.0	0	0	1.000
DMC 370	370	60	0	0	0	0.0	0.0	0.0	0	0	1.000
DMC 372	372	143	0	0	0	0.0	0.0	0.0	0	0	1.000
DMC 436	436	48	0	0	0	0.0	0.0	0.0	0	0	1.000
DMC 470	470	1111	0	0	0	0.0	0.0	0.0	0	0	1.000
DMC 471	471	257	0	0	0	0.0	0.0	0.0	0	0	1.000
DMC 550	550	244	0	0	0	0.0	0.0	0.0	0	0	1.000
DMC 552	552	97	0	0	0	0.0	0.0	0.0	0	0	1.000
DMC 553	553	97	0	0	0	0.0	0.0	0.0	0	0	1.000
DMC 580	580	1990	0	0	0	0.0	0.0	0.0	0	0	1.000
DMC 581	581	1717	0	0	0	0.0	0.0	0.0	0	0	1.000
DMC 600	600	98	0	0	0	0.0	0.0	0.0	0	0	1.000
DMC 601	601	66	0	0	0	0.0	0.0	0.0	0	0	1.000
DMC 602	602	88	0	0	0	0.0	0.0	0.0	0	0	1.000
DMC 603	603	717	0	0	0	0.0	0.0	0.0	0	0	1.000
DMC 610	610	453	0	0	0	0.0	0.0	0.0	0	0	1.000
DMC 640	640	125	0	0	0	0.0	0.0	0.0	0	0	1.000
DMC 718	718	627	0	0	0	0.0	0.0	0.0	0	0	1.000
DMC 746	746	32	0	0	0	0.0	0.0	0.0	0	0	1.000
DMC 762	762	573	0	0	0	0.0	0.0	0.0	0	0	1.000
DMC 779	779	414	0	0	0	0.0	0.0	0.0	0	0	1.000
DMC 791	791	81	0	0	0	0.0	0.0	0.0	0	0	1.000
DMC 792	792	95	0	0	0	0.0	0.0	0.0	0	0	1.000
DMC 793	793	143	0	0	0	0.0	0.0	0.0	0	0	1.000
DMC 794	794	252	0	0	0	0.0	0.0	0.0	0	0	1.000
DMC 796	796	5301	0	0	0	0.0	0.0	0.0	0	0	3.000
DMC 797	797	3194	0	0	0	0.0	0.0	0.0	0	0	2.000
DMC 798	798	665	0	0	0	0.0	0.0	0.0	0	0	1.000
DMC 799	799	170	0	0	0	0.0	0.0	0.0	0	0	1.000
DMC 800	800	358	0	0	0	0.0	0.0	0.0	0	0	1.000
DMC 809	809	258	0	0	0	0.0	0.0	0.0	0	0	1.000
DMC 820	820	364	0	0	0	0.0	0.0	0.0	0	0	1.000
DMC 833	833	64	0	0	0	0.0	0.0	0.0	0	0	1.000
DMC 869	869	79	0	0	0	0.0	0.0	0.0	0	0	1.000
DMC 890	890	1577	0	0	0	0.0	0.0	0.0	0	0	1.000
DMC 895	895	292	0	0	0	0.0	0.0	0.0	0	0	1.000
DMC 898	898	113	0	0	0	0.0	0.0	0.0	0	0	1.000
DMC 902	902	184	0	0	0	0.0	0.0	0.0	0	0	1.000
DMC 904	904	1146	0	0	0	0.0	0.0	0.0	0	0	1.000
DMC 905	905	1646	0	0	0	0.0	0.0	0.0	0	0	1.000
DMC 906	906	730	0	0	0	0.0	0.0	0.0	0	0	1.000
DMC 907	907	1326	0	0	0	0.0	0.0	0.0	0	0	1.000
DMC 915	915	497	0	0	0	0.0	0.0	0.0	0	0	1.000
DMC 917	917	535	0	0	0	0.0	0.0	0.0	0	0	1.000

Type	Number	Full	Half	Quarter	Petite	Back(in)	Str(in)	Spec(in)	French	Bead	Skein	Est.
■ DMC	934	2247	0	0	0	0.0	0.0	0.0	0	0	1.000	
■ DMC	936	1955	0	0	0	0.0	0.0	0.0	0	0	1.000	
■ DMC	956	200	0	0	0	0.0	0.0	0.0	0	0	1.000	
■ DMC	3012	270	0	0	0	0.0	0.0	0.0	0	0	1.000	
■ DMC	3031	559	0	0	0	0.0	0.0	0.0	0	0	1.000	
■ DMC	3047	130	0	0	0	0.0	0.0	0.0	0	0	1.000	
■ DMC	3346	624	0	0	0	0.0	0.0	0.0	0	0	1.000	
■ DMC	3348	149	0	0	0	0.0	0.0	0.0	0	0	1.000	
■ DMC	3362	220	0	0	0	0.0	0.0	0.0	0	0	1.000	
■ DMC	3364	63	0	0	0	0.0	0.0	0.0	0	0	1.000	
■ DMC	3371	1503	0	0	0	0.0	0.0	0.0	0	0	1.000	
■ DMC	3607	1022	0	0	0	0.0	0.0	0.0	0	0	1.000	
■ DMC	3609	305	0	0	0	0.0	0.0	0.0	0	0	1.000	
■ DMC	3688	380	0	0	0	0.0	0.0	0.0	0	0	1.000	
■ DMC	3726	452	0	0	0	0.0	0.0	0.0	0	0	1.000	
■ DMC	3740	429	0	0	0	0.0	0.0	0.0	0	0	1.000	
■ DMC	3743	514	0	0	0	0.0	0.0	0.0	0	0	1.000	
■ DMC	3747	3780	0	0	0	0.0	0.0	0.0	0	0	2.000	
■ DMC	3756	1833	0	0	0	0.0	0.0	0.0	0	0	1.000	
■ DMC	3772	55	0	0	0	0.0	0.0	0.0	0	0	1.000	
■ DMC	3799	194	0	0	0	0.0	0.0	0.0	0	0	1.000	
■ DMC	3803	264	0	0	0	0.0	0.0	0.0	0	0	1.000	
■ DMC	3804	277	0	0	0	0.0	0.0	0.0	0	0	1.000	
■ DMC	3805	499	0	0	0	0.0	0.0	0.0	0	0	1.000	
■ DMC	3806	391	0	0	0	0.0	0.0	0.0	0	0	1.000	
■ DMC	3819	615	0	0	0	0.0	0.0	0.0	0	0	1.000	
■ DMC	3834	452	0	0	0	0.0	0.0	0.0	0	0	1.000	
■ DMC	3835	327	0	0	0	0.0	0.0	0.0	0	0	1.000	
■ DMC	3860	270	0	0	0	0.0	0.0	0.0	0	0	1.000	
■ DMC	3861	310	0	0	0	0.0	0.0	0.0	0	0	1.000	
■ DMC	3862	349	0	0	0	0.0	0.0	0.0	0	0	1.000	
■ DMC	3863	143	0	0	0	0.0	0.0	0.0	0	0	1.000	
■ DMC	3865	3231	0	0	0	0.0	0.0	0.0	0	0	2.000	