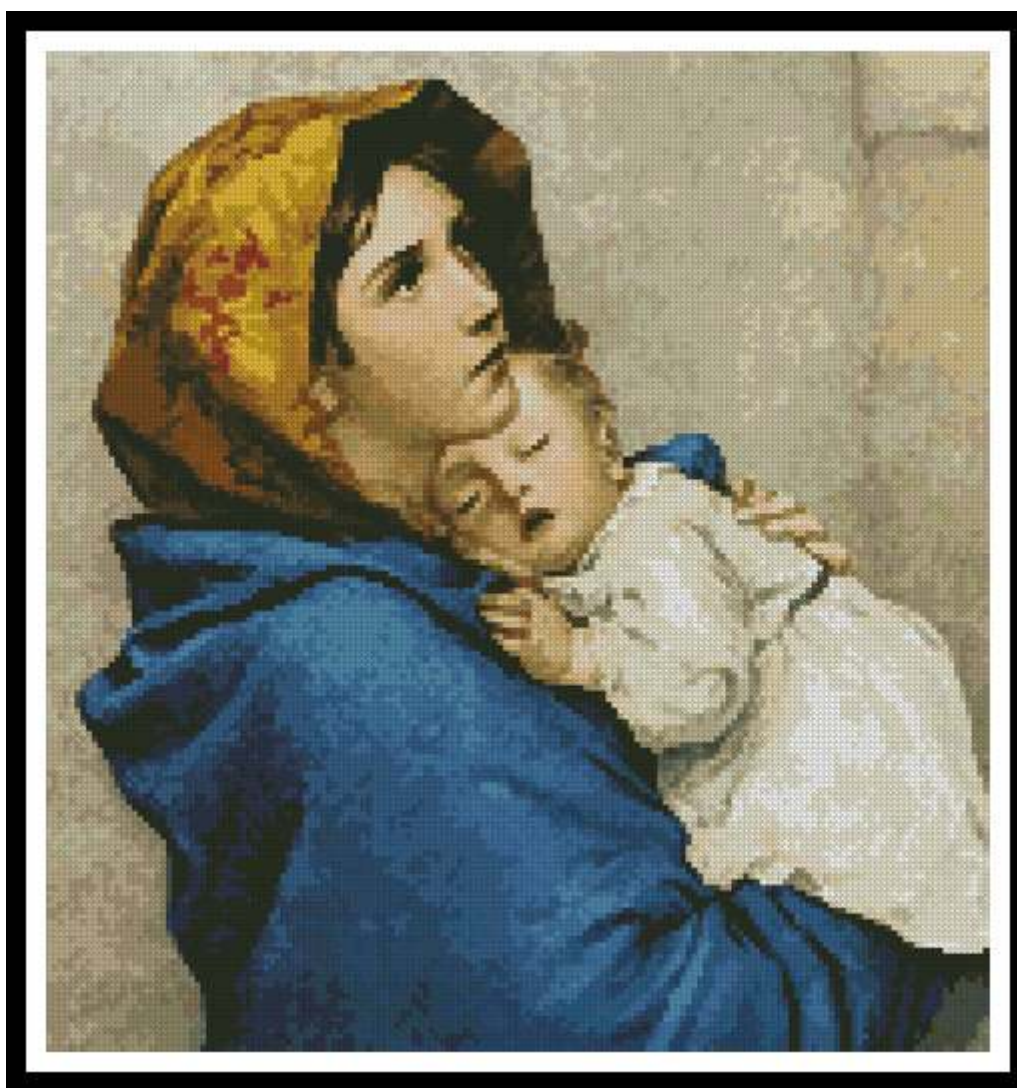


Artecy

CROSS STITCH

Madonna of the Streets - Crop

Adapted from Artwork by Roberto Ferruzzi



Cross Stitch Design by Tereena Clarke.

Completed Size = 165w x 175h Stitches

14 Count, 12w x 12.5h inches (30cm x 32cm)

16 Count, 10.5w x 11h inches (27cm x 28cm)

18 Count, 9.5w x 10h inches (24cm x 25cm)

Uses 54 DMC cotton colours. Only full cross stitches are used in this pattern.

Copyright of Artecy Cross Stitch

www.artecy.com
www.artecyshop.com

Pattern Instructions

* This pattern can be worked on any fabric type, colour or count you prefer. To work out the size of the finished article, take the number of stitches wide and high and divide it by the count of your fabric (e.g. 14,16,18 count aida etc) to get the size in inches. Times it by 2.54 to get centimetres. We have the sizes in inches shown on the previous page. Also leave at least a few inches of fabric around each side of the design to assist in framing. The higher the fabric count the smaller the completed project will be.

* To put the pattern together look in the top and bottom corners. The page numbers in brackets show which page number it joins up to. Page 1 always starts at the top left hand side of the pattern. Our pages also have a shaded grey section. This indicates a 3 row overlap from adjoining pages to assist with reading the pattern. PLEASE DO NOT RESTITCH THIS AREA.

* You should begin at the centre of the pattern. To find the centre of the pattern it is just a matter of laying the pattern out and locating the arrows at the top and left hand side of the patterns, they are determined by dividing the stitch numbers wide and high in half. Where the two points meet in the middle, that is the centre.

* If you need more assistance to find the middle of your pattern or the page layout, please see the notes section on the colour symbol chart. The easiest way to stitch this pattern, as it has multiple pages, is to stitch one page at a time.

* We suggest using two strands of floss for each stitch and one strand for backstitching if the pattern calls for it.

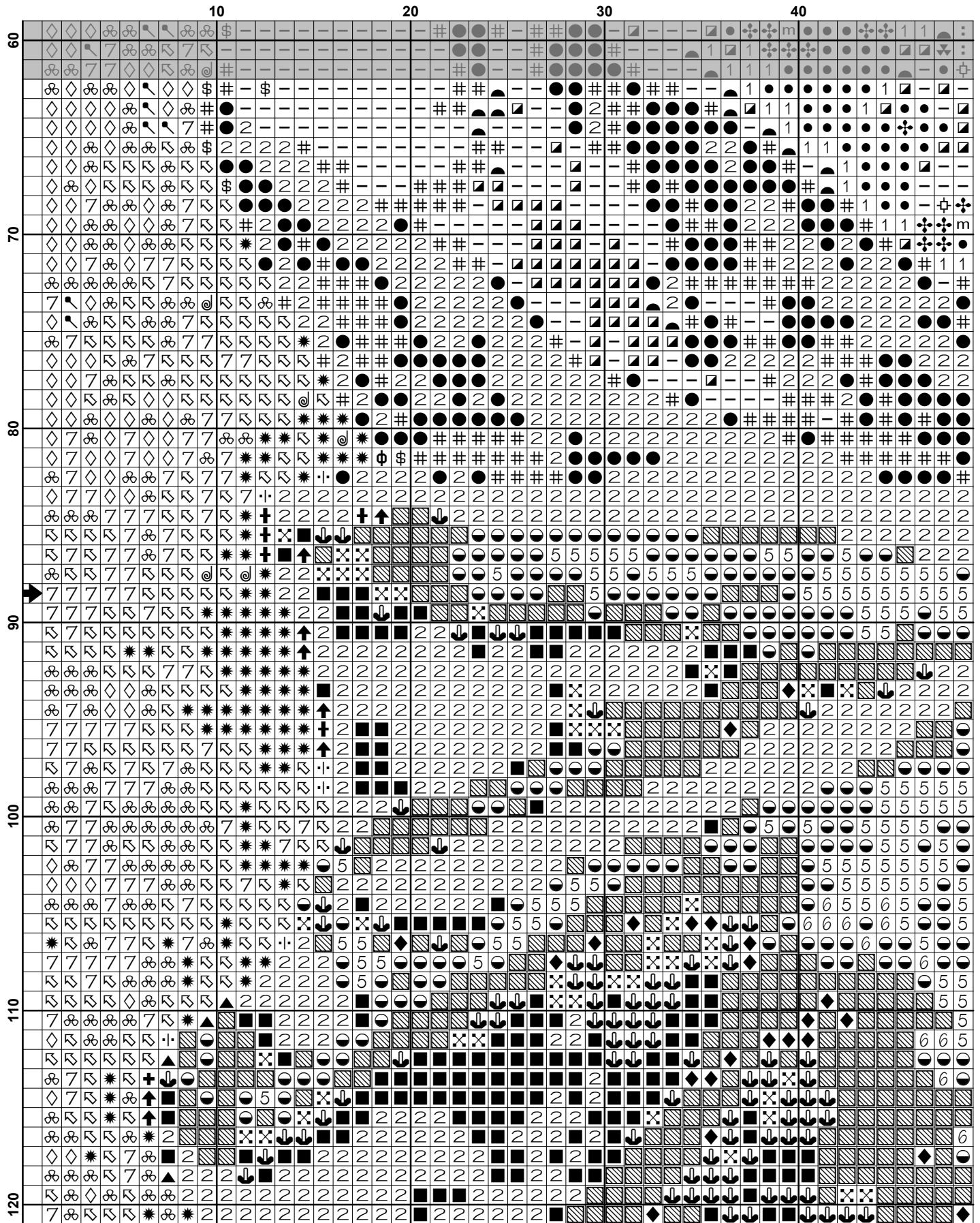
We hope you enjoy stitching our pattern.

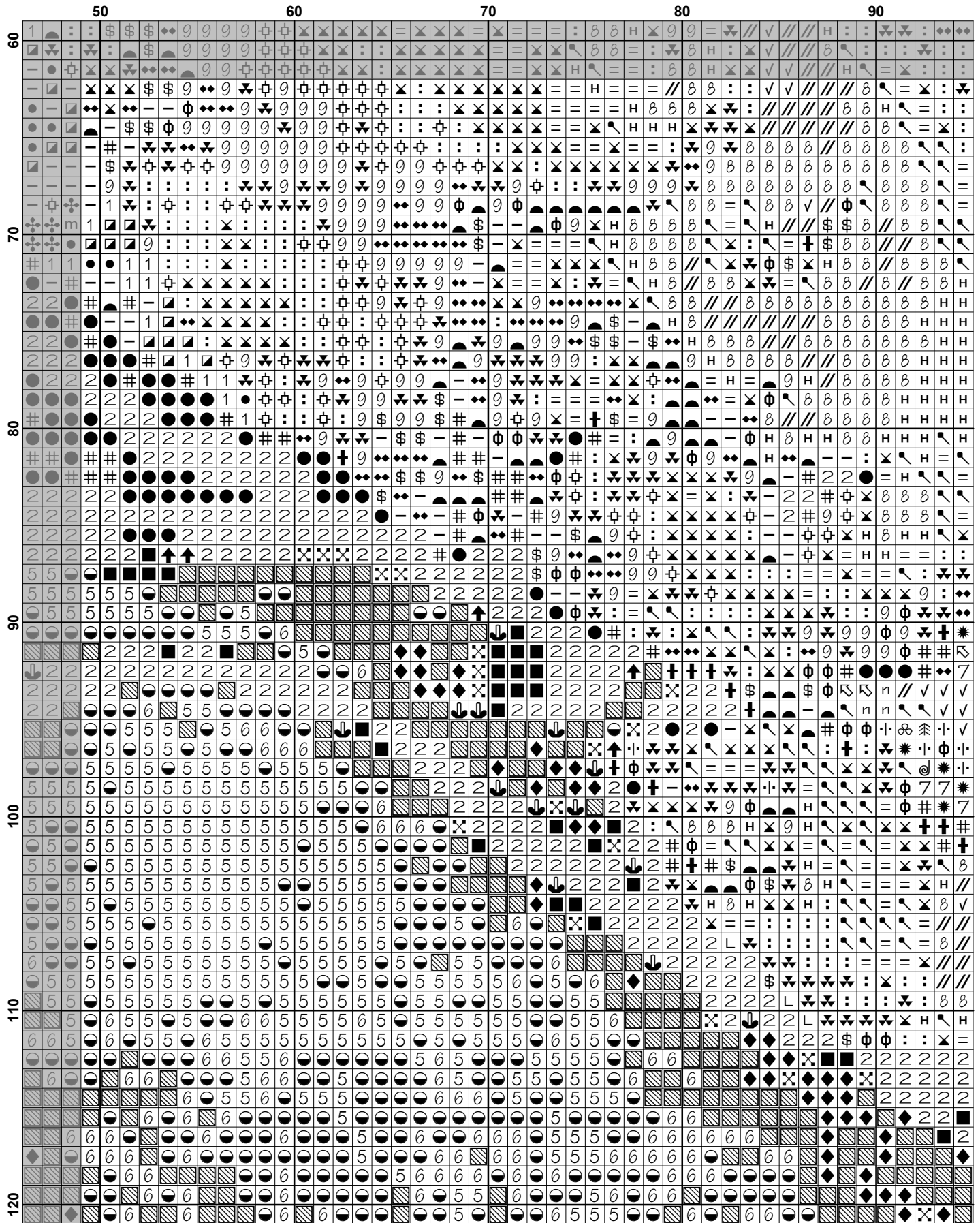
Thanks and Best Wishes
Tereena Clarke

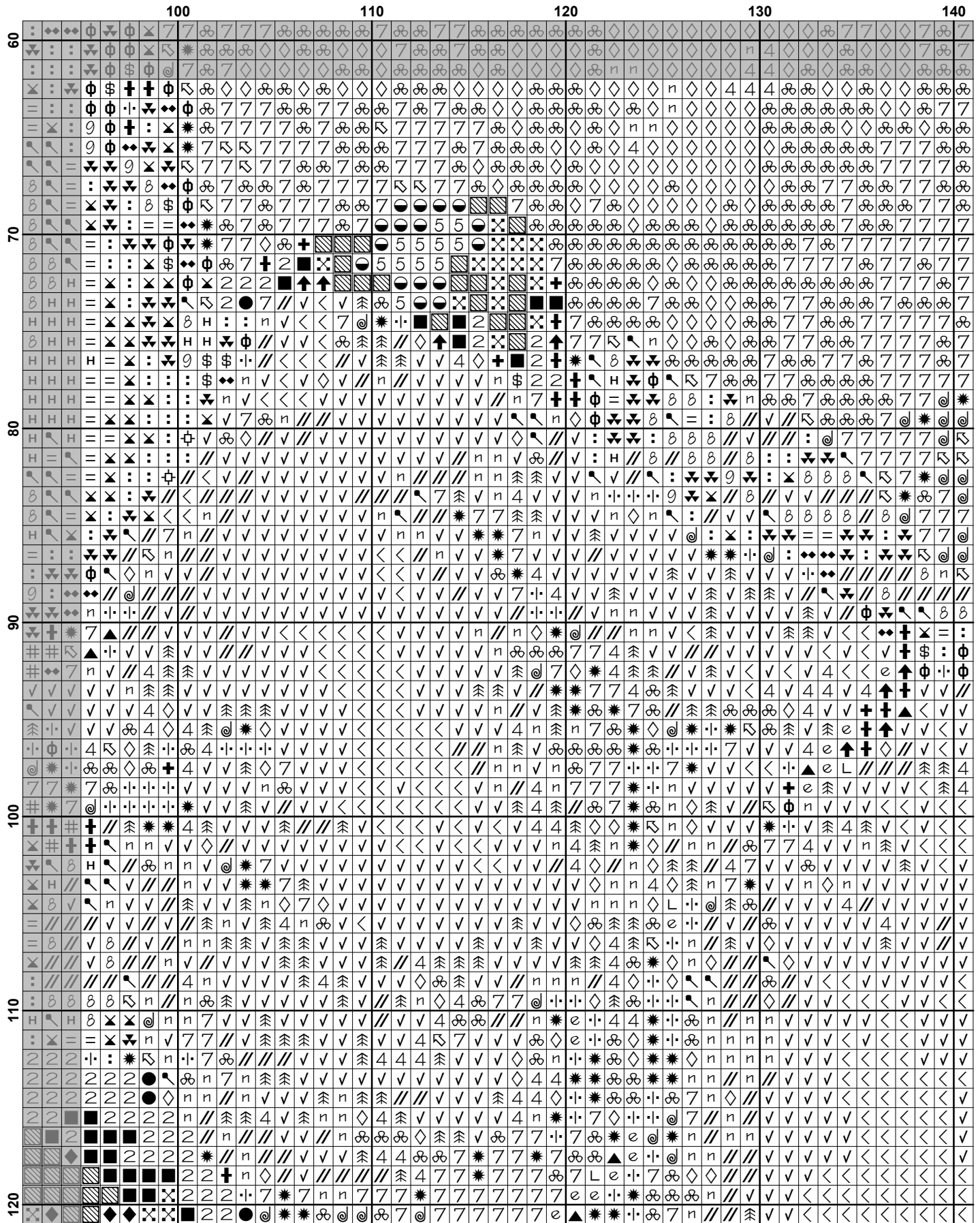
Artecy Cross Stitch
Po Box 3474
Tuggerah, NSW 2259
Australia

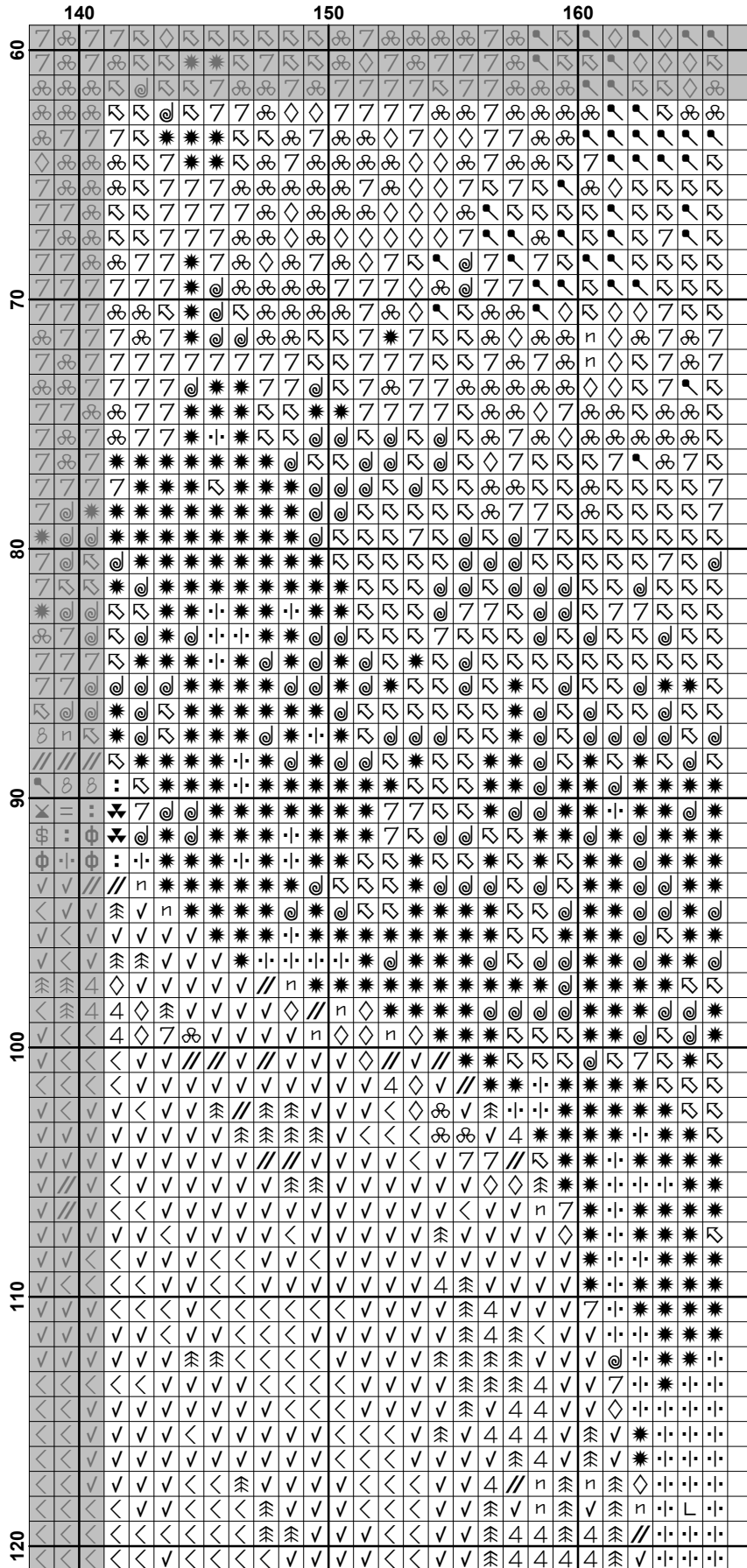
Websites: www.artecy.com and www.artecyshop.com
Email: artecy@artecy.com or stitch@artecyshop.com

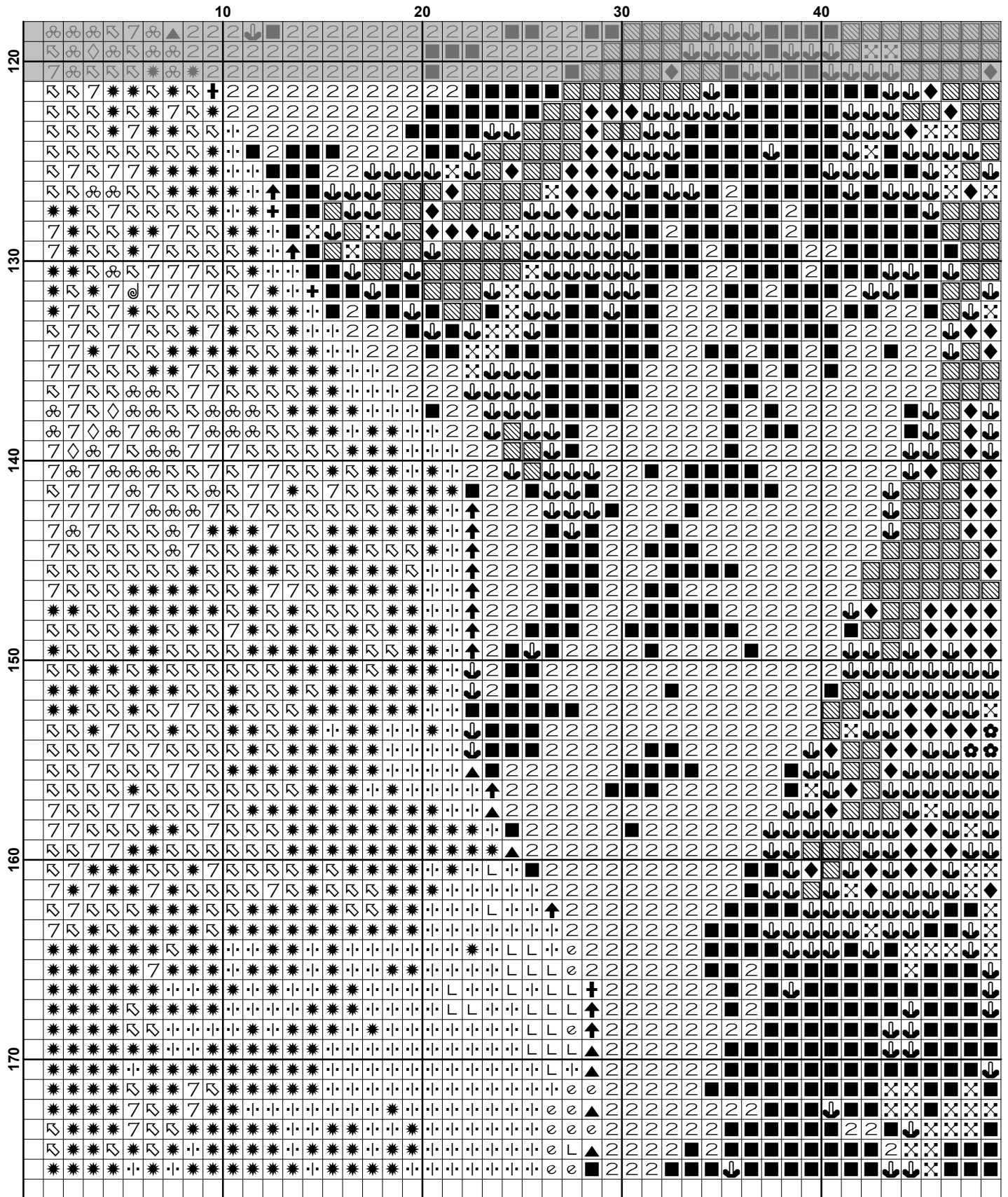
*Patterns are strictly for personal use only. It is against our copyright to make kits for sale from our designs or to sell, copy or redistribute this pattern in any form. You may not upload our patterns to any internet forums or groups or any other website. You may make 1 copy of this pattern for a working copy for your own personal use if needed.

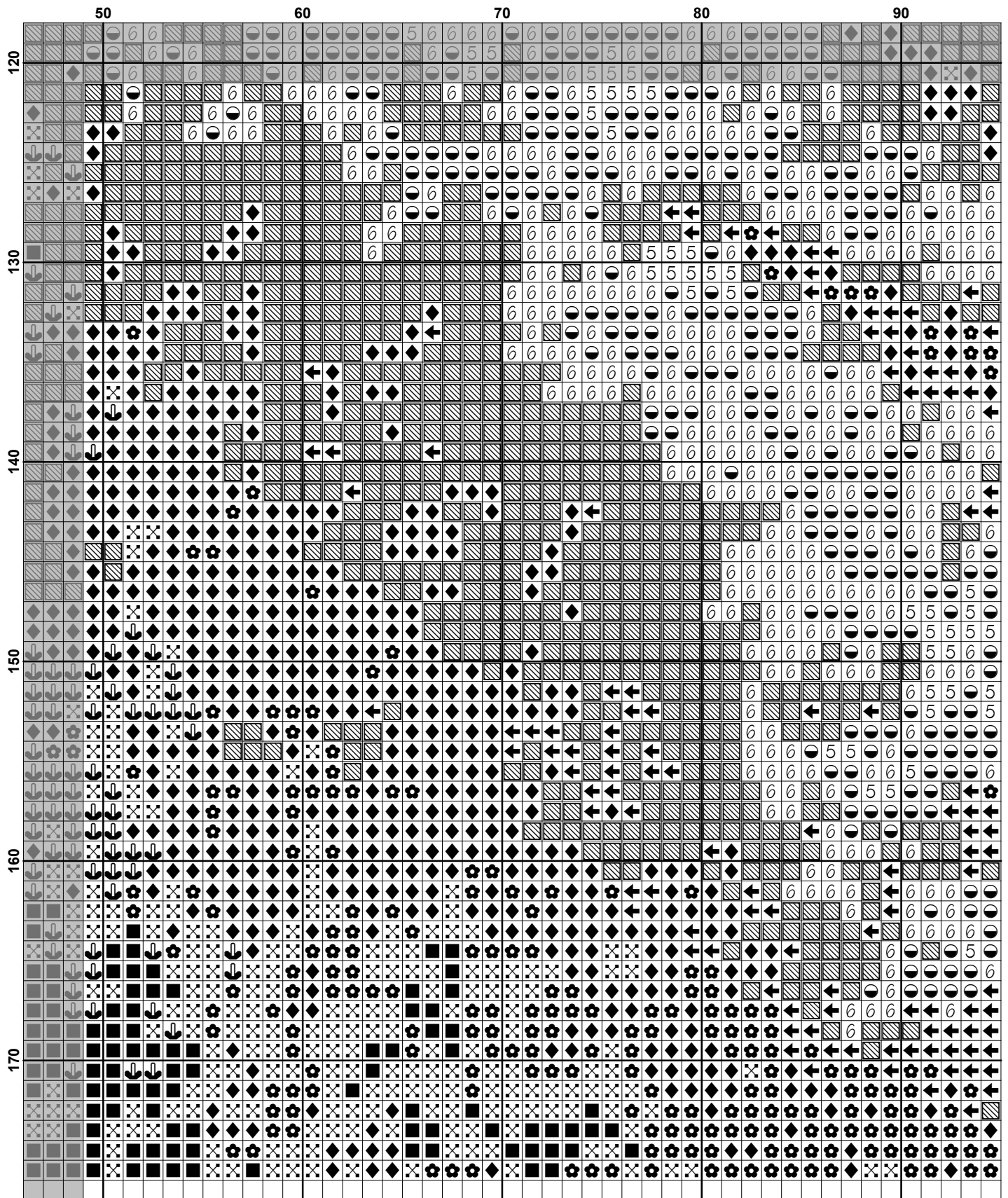


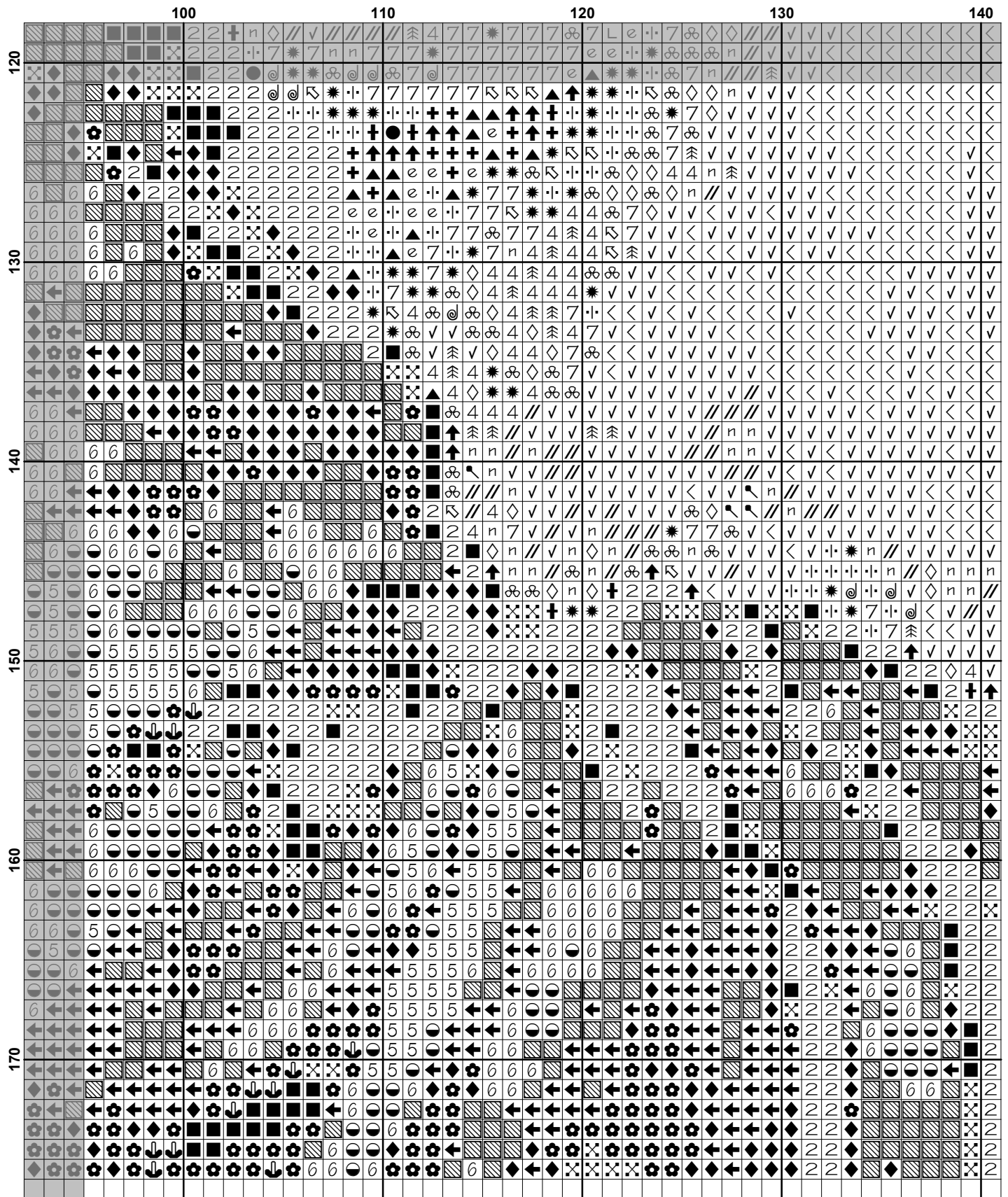











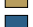









Pattern Name: Madonna of the Streets - Crop
Designed By: by Roberto Ferruzzi
Company: Artecy Cross Stitch
Copyright: Copyright Artecy Cross Stitch. All rights Reserved.
Fabric: Aida 14, White
 165w X 175h Stitches
Size(s): 14 Count, 11-3/4w X 12-1/2h in
 16 Count, 10-1/4w X 10-7/8h in
 18 Count, 9-1/8w X 9-5/8h in

Floss Used for Full Stitches:

Symbol	Strands	Type	Number	Color
	2	DMC	167	Yellow Beige-VY DK
	2	DMC	300	Mahogany-VY DK
	2	DMC	310	Black
	2	DMC	311	Navy Blue-MD
	2	DMC	312	Baby Blue-VY DK
	2	DMC	336	Navy Blue
	2	DMC	372	Mustard-LT
	2	DMC	400	Mahogany-DK
	2	DMC	420	Hazelnut Brown-DK
	2	DMC	433	Brown-MD
	2	DMC	435	Brown-VY LT
	2	DMC	436	Tan
	2	DMC	437	Tan-LT
	2	DMC	498	Christmas Red-DK
	2	DMC	517	Wedgewood-DK
	2	DMC	535	Ash Gray-VY LT
	2	DMC	613	Drab Brown-VY LT
	2	DMC	640	Beige Gray-VY DK
	2	DMC	645	Beaver Gray-VY DK
	2	DMC	728	Topaz
	2	DMC	738	Tan-VY LT
	2	DMC	739	Tan-UL VY LT
	2	DMC	780	Topaz-UL VY DK
	2	DMC	782	Topaz-DK
	2	DMC	803	Baby Blue-UL VY DK
	2	DMC	822	Beige Gray-LT
	2	DMC	823	Navy Blue-DK
	2	DMC	825	Blue-DK
	2	DMC	841	Beige Brown-LT
	2	DMC	842	Beige Brown-VY LT
	2	DMC	844	Beaver Brown-UL DK
	2	DMC	869	Hazelnut Brown-VY DK
	2	DMC	919	Red Copper
	2	DMC	938	Coffee Brown-UL DK
	2	DMC	945	Tawny
	2	DMC	951	Tawny-LT
	2	DMC	975	Golden Brown-DK
	2	DMC	976	Golden Brown-MD
	2	DMC	3031	Mocha Brown-VY DK
	2	DMC	3033	Mocha Brown-VY LT
	2	DMC	3371	Black Brown
	2	DMC	3750	Antique Blue-VY DK
	2	DMC	3760	Wedgewood-MD
	2	DMC	3770	Tawny-VY LT
	2	DMC	3782	Mocha Brown-LT

Symbol	Strands	Type	Number	Color
 L	2	DMC	3790	Beige Gray-UL DK
 ↑	2	DMC	3799	Pewter Gray-VY DK
 :	2	DMC	3828	Hazelnut Brown
 ←	2	DMC	3842	Wedgewood-DK
 m	2	DMC	3852	Straw-VY DK
 H	2	DMC	3856	Mahogany-UL VY LT
 ϕ	2	DMC	3862	Mocha Beige-DK
 ⚡	2	DMC	3864	Mocha Beige-LT
 <	2	DMC	3865	Winter White

Notes:

The middle of this pattern can be found on page 6 and is 84 stitches across and 89 stitches down.

Pattern layout using page numbers in top left.

1 2 3 4
5 6 7 8
9 10 11 12

Usage Summary

Strands Per Skein: 6

Skein Length: 313.0 in

Type	Number	Full	Half	Quarter	Petite	Back(in)	Str(in)	Spec(in)	French	Bead	Skein Est.
DMC 167	167	218	0	0	0	0.0	0.0	0.0	0	0	1.000
DMC 300	300	388	0	0	0	0.0	0.0	0.0	0	0	1.000
DMC 310	310	2421	0	0	0	0.0	0.0	0.0	0	0	2.000
DMC 311	311	946	0	0	0	0.0	0.0	0.0	0	0	1.000
DMC 312	312	1943	0	0	0	0.0	0.0	0.0	0	0	1.000
DMC 336	336	406	0	0	0	0.0	0.0	0.0	0	0	1.000
DMC 372	372	221	0	0	0	0.0	0.0	0.0	0	0	1.000
DMC 400	400	129	0	0	0	0.0	0.0	0.0	0	0	1.000
DMC 420	420	165	0	0	0	0.0	0.0	0.0	0	0	1.000
DMC 433	433	135	0	0	0	0.0	0.0	0.0	0	0	1.000
DMC 435	435	123	0	0	0	0.0	0.0	0.0	0	0	1.000
DMC 436	436	339	0	0	0	0.0	0.0	0.0	0	0	1.000
DMC 437	437	205	0	0	0	0.0	0.0	0.0	0	0	1.000
DMC 498	498	26	0	0	0	0.0	0.0	0.0	0	0	1.000
DMC 517	517	826	0	0	0	0.0	0.0	0.0	0	0	1.000
DMC 535	535	32	0	0	0	0.0	0.0	0.0	0	0	1.000
DMC 613	613	1777	0	0	0	0.0	0.0	0.0	0	0	1.000
DMC 640	640	445	0	0	0	0.0	0.0	0.0	0	0	1.000
DMC 645	645	49	0	0	0	0.0	0.0	0.0	0	0	1.000
DMC 728	728	226	0	0	0	0.0	0.0	0.0	0	0	1.000
DMC 738	738	849	0	0	0	0.0	0.0	0.0	0	0	1.000
DMC 739	739	743	0	0	0	0.0	0.0	0.0	0	0	1.000
DMC 780	780	133	0	0	0	0.0	0.0	0.0	0	0	1.000
DMC 782	782	298	0	0	0	0.0	0.0	0.0	0	0	1.000
DMC 803	803	366	0	0	0	0.0	0.0	0.0	0	0	1.000
DMC 822	822	374	0	0	0	0.0	0.0	0.0	0	0	1.000
DMC 823	823	939	0	0	0	0.0	0.0	0.0	0	0	1.000
DMC 825	825	569	0	0	0	0.0	0.0	0.0	0	0	1.000
DMC 841	841	1037	0	0	0	0.0	0.0	0.0	0	0	1.000
DMC 842	842	2497	0	0	0	0.0	0.0	0.0	0	0	2.000
DMC 844	844	23	0	0	0	0.0	0.0	0.0	0	0	1.000
DMC 869	869	126	0	0	0	0.0	0.0	0.0	0	0	1.000
DMC 919	919	77	0	0	0	0.0	0.0	0.0	0	0	1.000
DMC 938	938	431	0	0	0	0.0	0.0	0.0	0	0	1.000
DMC 945	945	342	0	0	0	0.0	0.0	0.0	0	0	1.000
DMC 951	951	499	0	0	0	0.0	0.0	0.0	0	0	1.000
DMC 975	975	124	0	0	0	0.0	0.0	0.0	0	0	1.000
DMC 976	976	228	0	0	0	0.0	0.0	0.0	0	0	1.000
DMC 3031	3031	81	0	0	0	0.0	0.0	0.0	0	0	1.000
DMC 3033	3033	718	0	0	0	0.0	0.0	0.0	0	0	1.000
DMC 3371	3371	472	0	0	0	0.0	0.0	0.0	0	0	1.000
DMC 3750	3750	439	0	0	0	0.0	0.0	0.0	0	0	1.000
DMC 3760	3760	494	0	0	0	0.0	0.0	0.0	0	0	1.000
DMC 3770	3770	1748	0	0	0	0.0	0.0	0.0	0	0	1.000
DMC 3782	3782	1033	0	0	0	0.0	0.0	0.0	0	0	1.000
DMC 3790	3790	31	0	0	0	0.0	0.0	0.0	0	0	1.000
DMC 3799	3799	141	0	0	0	0.0	0.0	0.0	0	0	1.000
DMC 3828	3828	265	0	0	0	0.0	0.0	0.0	0	0	1.000
DMC 3842	3842	343	0	0	0	0.0	0.0	0.0	0	0	1.000
DMC 3852	3852	273	0	0	0	0.0	0.0	0.0	0	0	1.000
DMC 3856	3856	248	0	0	0	0.0	0.0	0.0	0	0	1.000

Type	Number	Full	Half	Quarter	Petite	Back(in)	Str(in)	Spec(in)	French	Bead	Skein Est.
■ DMC	3862	87	0	0	0	0.0	0.0	0.0	0	0	1.000
■ DMC	3864	1224	0	0	0	0.0	0.0	0.0	0	0	1.000
□ DMC	3865	603	0	0	0	0.0	0.0	0.0	0	0	1.000