

## Colourful Winter Sunrise



\* Original image©moderate north wind - Pixabay  
Cross Stitch Design by Tereena Clarke.

Completed Size = 300w x 213h Stitches

14 Count, 21.5w x 15.5h inches (55cm x 39cm)

16 Count, 19w x 13.5h inches (48cm x 34cm)

18 Count, 17w x 12h inches (43cm x 30cm)

Uses 64 DMC cotton colours. Only full cross stitches are used in this pattern.

# *Pattern Instructions*

\* This pattern can be worked on any fabric type, colour or count you prefer. To work out the size of the finished article, take the number of stitches wide and high and divide it by the count of your fabric (e.g. 14,16,18 count aida etc) to get the size in inches. Times it by 2.54 to get centimetres. We have the sizes in inches shown on the previous page. Also leave at least a few inches of fabric around each side of the design to assist in framing. The higher the fabric count the smaller the completed project will be.

\* To put the pattern together look in the top and bottom corners. The page numbers in brackets show which page number it joins up to. Page 1 always starts at the top left hand side of the pattern. Our pages also have a shaded grey section. This indicates a 3 row overlap from adjoining pages to assist with reading the pattern. PLEASE DO NOT RESTITCH THIS AREA.

\* You should begin at the centre of the pattern. To find the centre of the pattern it is just a matter of laying the pattern out and locating the arrows at the top and left hand side of the patterns, they are determined by dividing the stitch numbers wide and high in half. Where the two points meet in the middle, that is the centre.

\* If you need more assistance to find the middle of your pattern or the page layout, please see the notes section on the colour symbol chart. The easiest way to stitch this pattern, as it has multiple pages, is to stitch one page at a time.

\* We suggest using two strands of floss for each stitch and one strand for backstitching if the pattern calls for it.

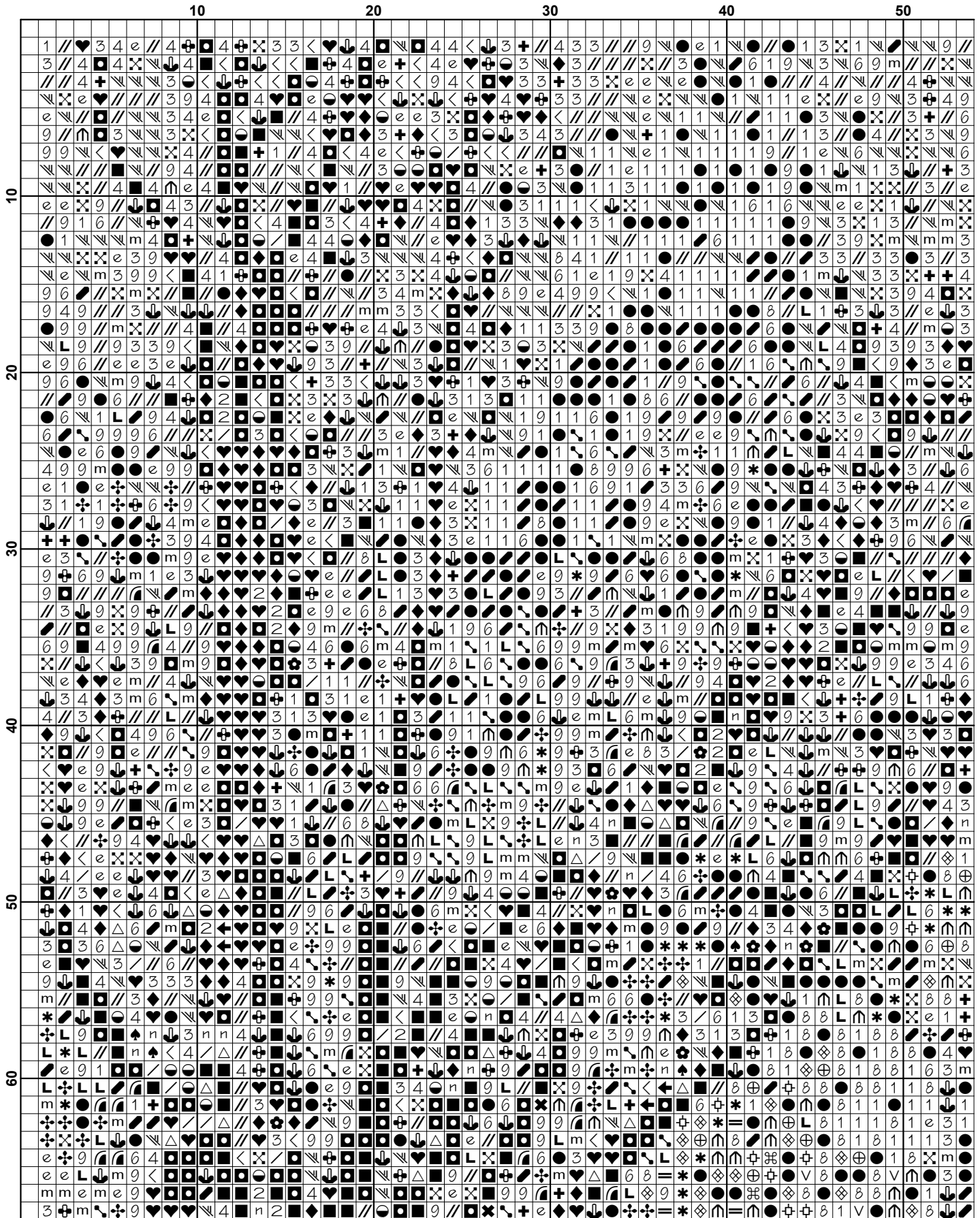
We hope you enjoy stitching our pattern.

Thanks and Best Wishes  
Tereena Clarke

Artecy Cross Stitch  
Po Box 3474  
Tuggerah, NSW 2259  
Australia

Websites: [www.artecy.com](http://www.artecy.com) and [www.artecyshop.com](http://www.artecyshop.com)  
Email: [artecy@artecy.com](mailto:artecy@artecy.com) or [stitch@artecyshop.com](mailto:stitch@artecyshop.com)

\*Patterns are strictly for personal use only. It is against our copyright to make kits for sale from our designs or to sell, copy or redistribute this pattern in any form. You may not upload our patterns to any internet forums or groups or any other website. You may make 1 copy of this pattern for a working copy for your own personal use if needed.

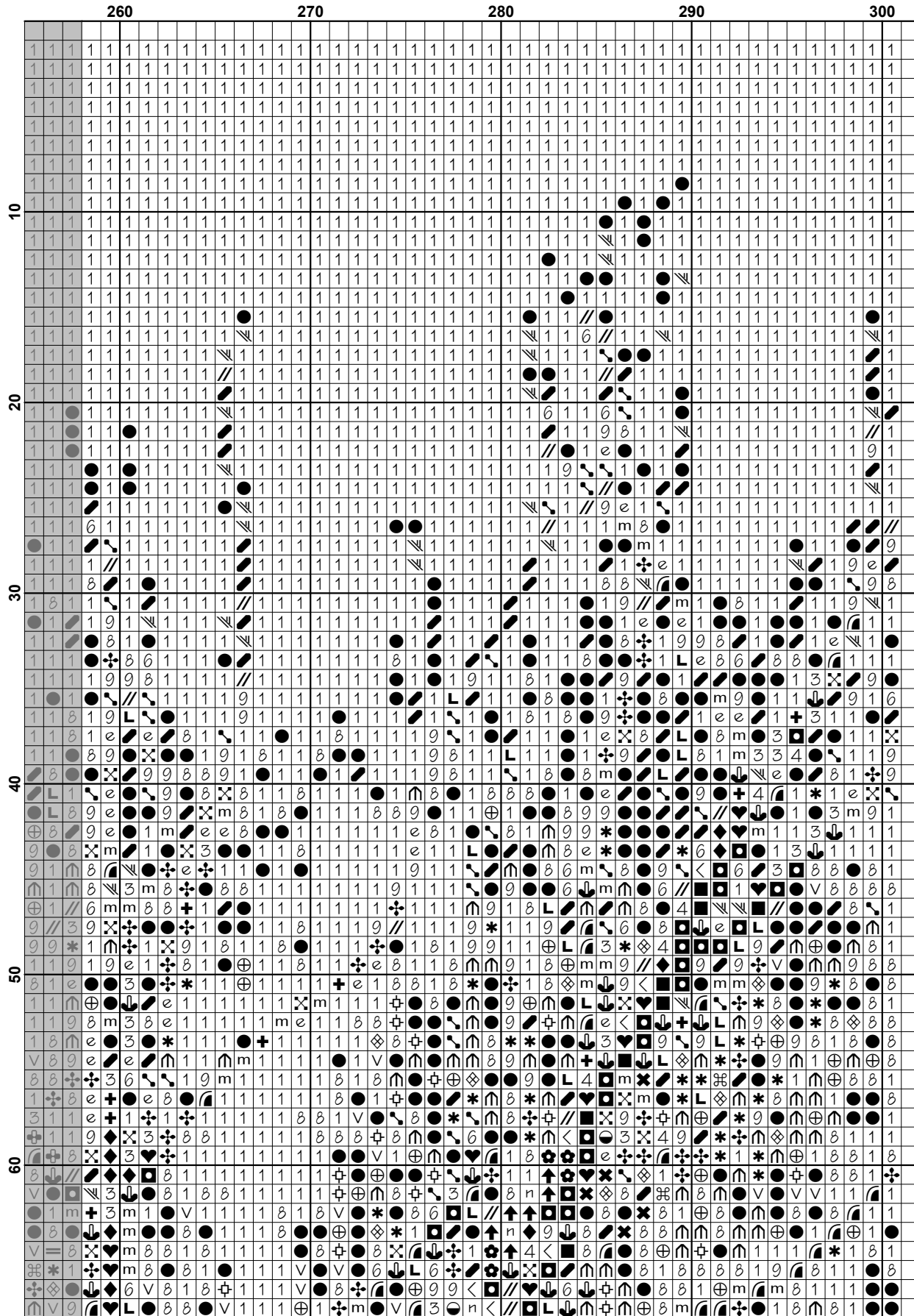




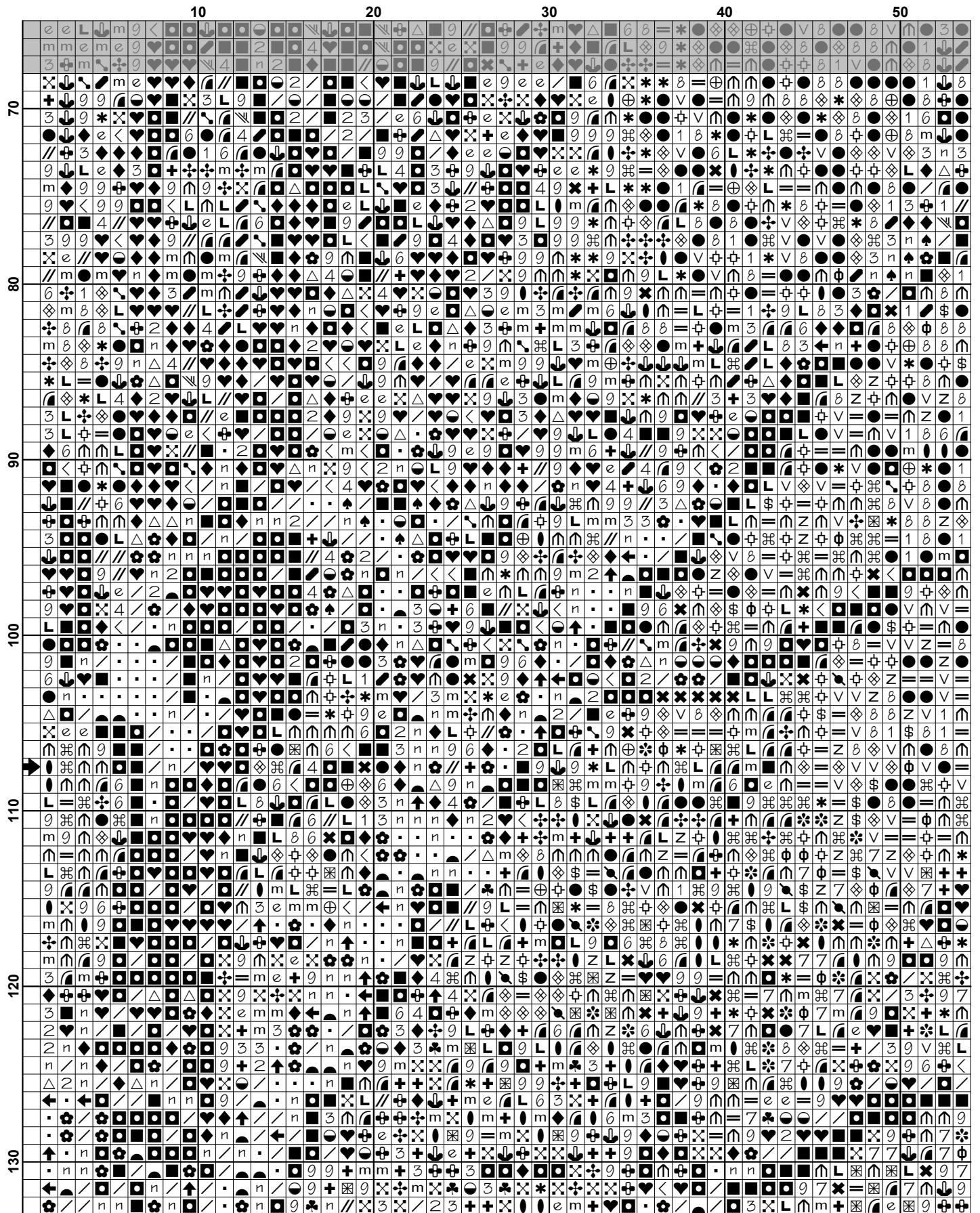


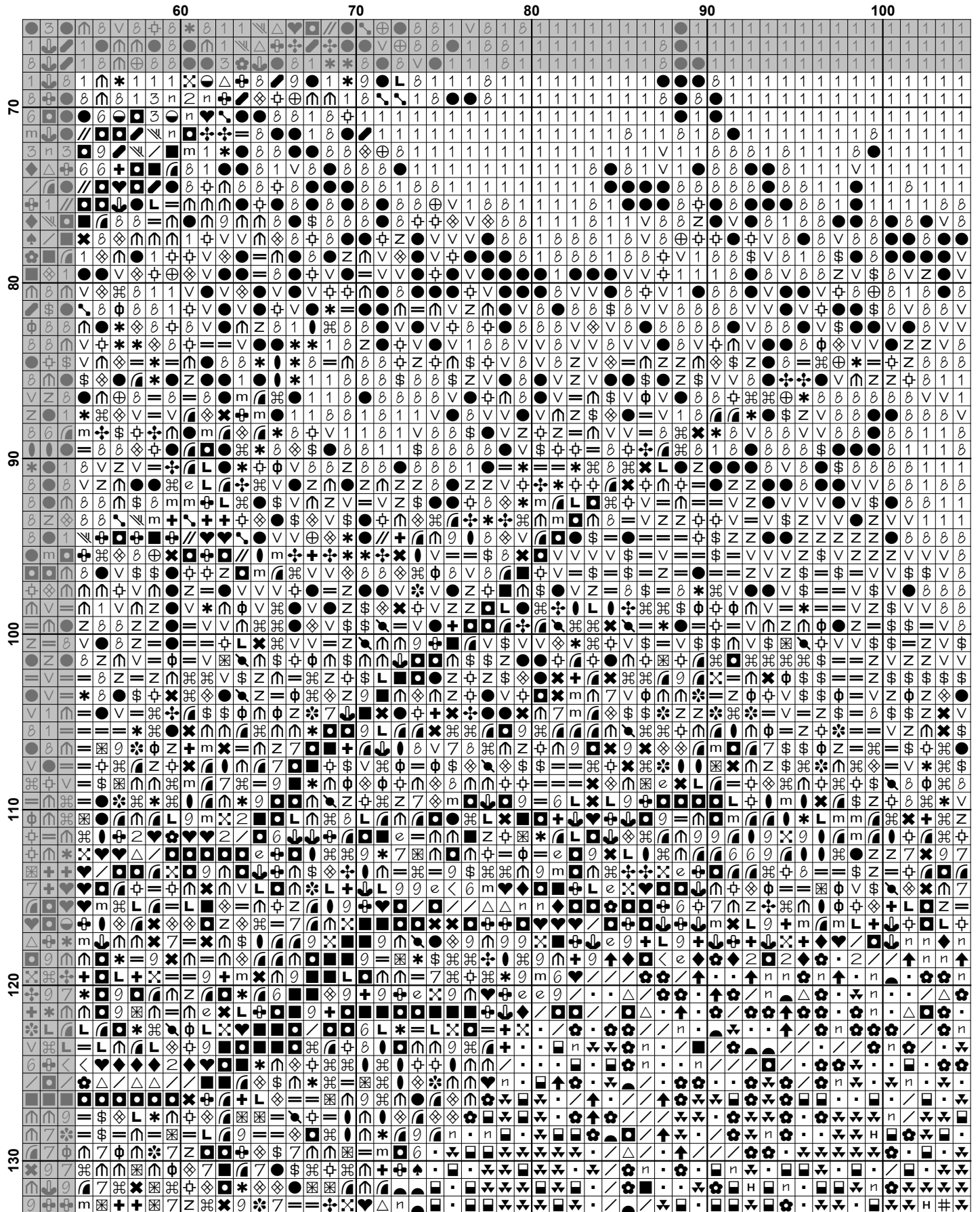






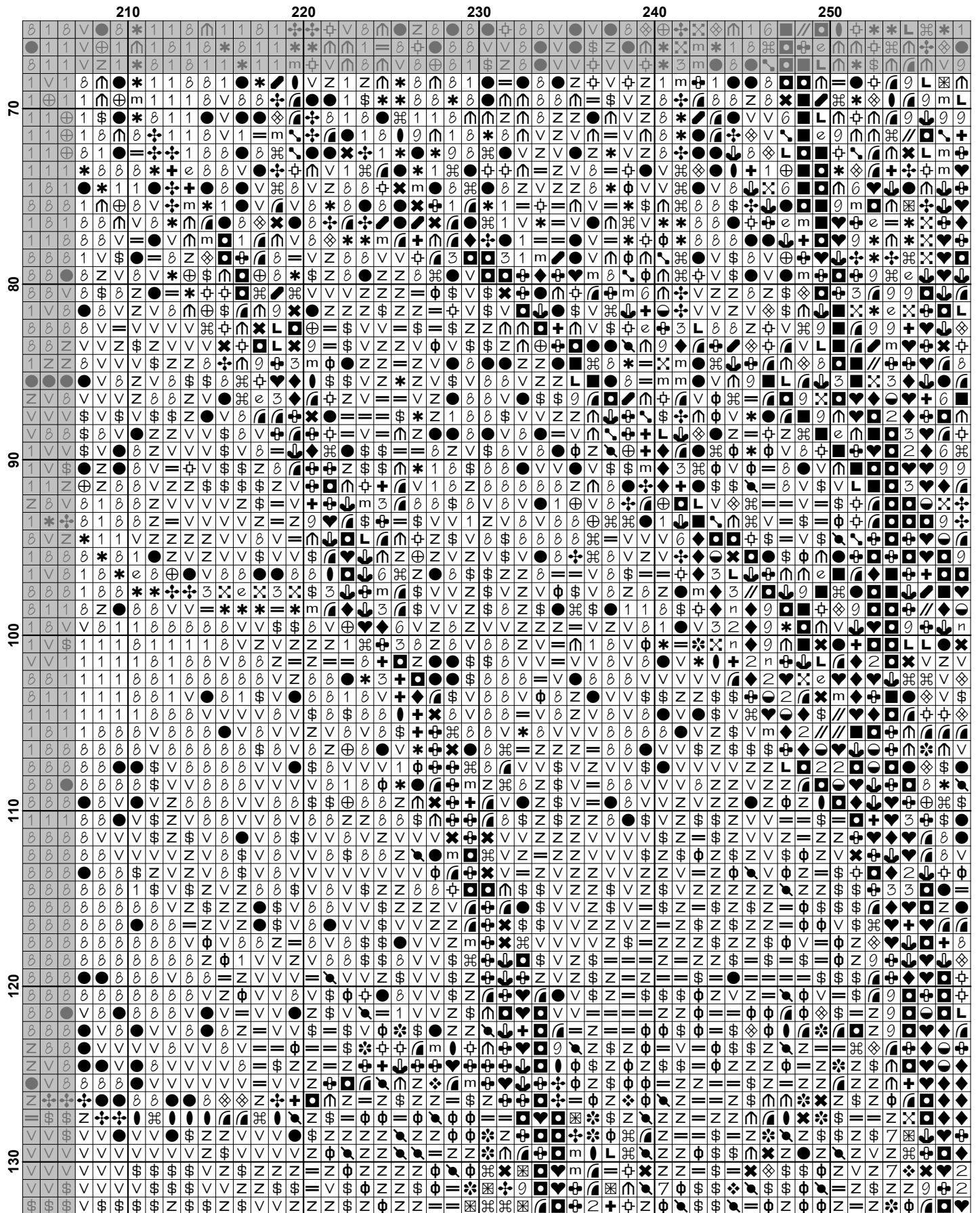


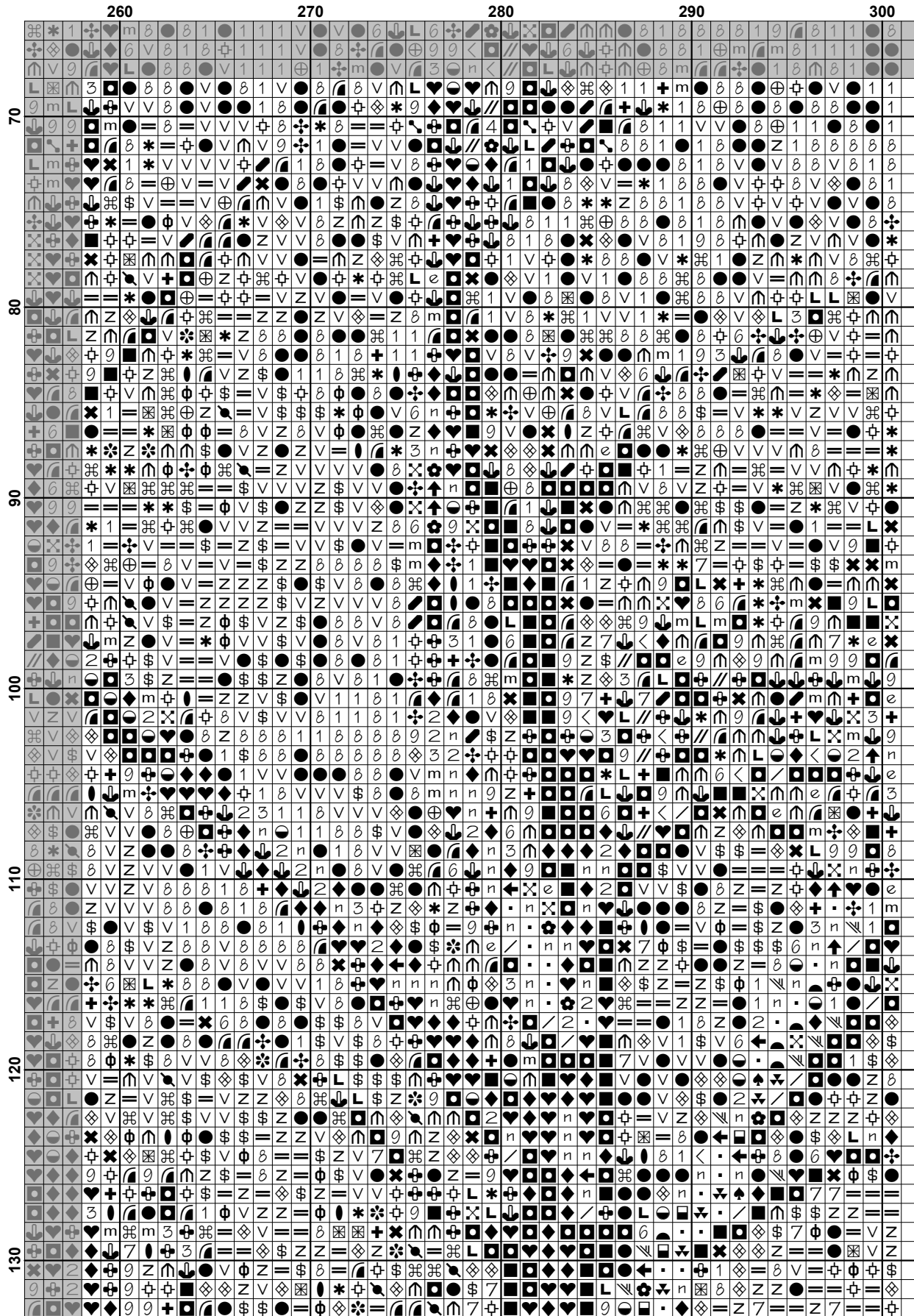




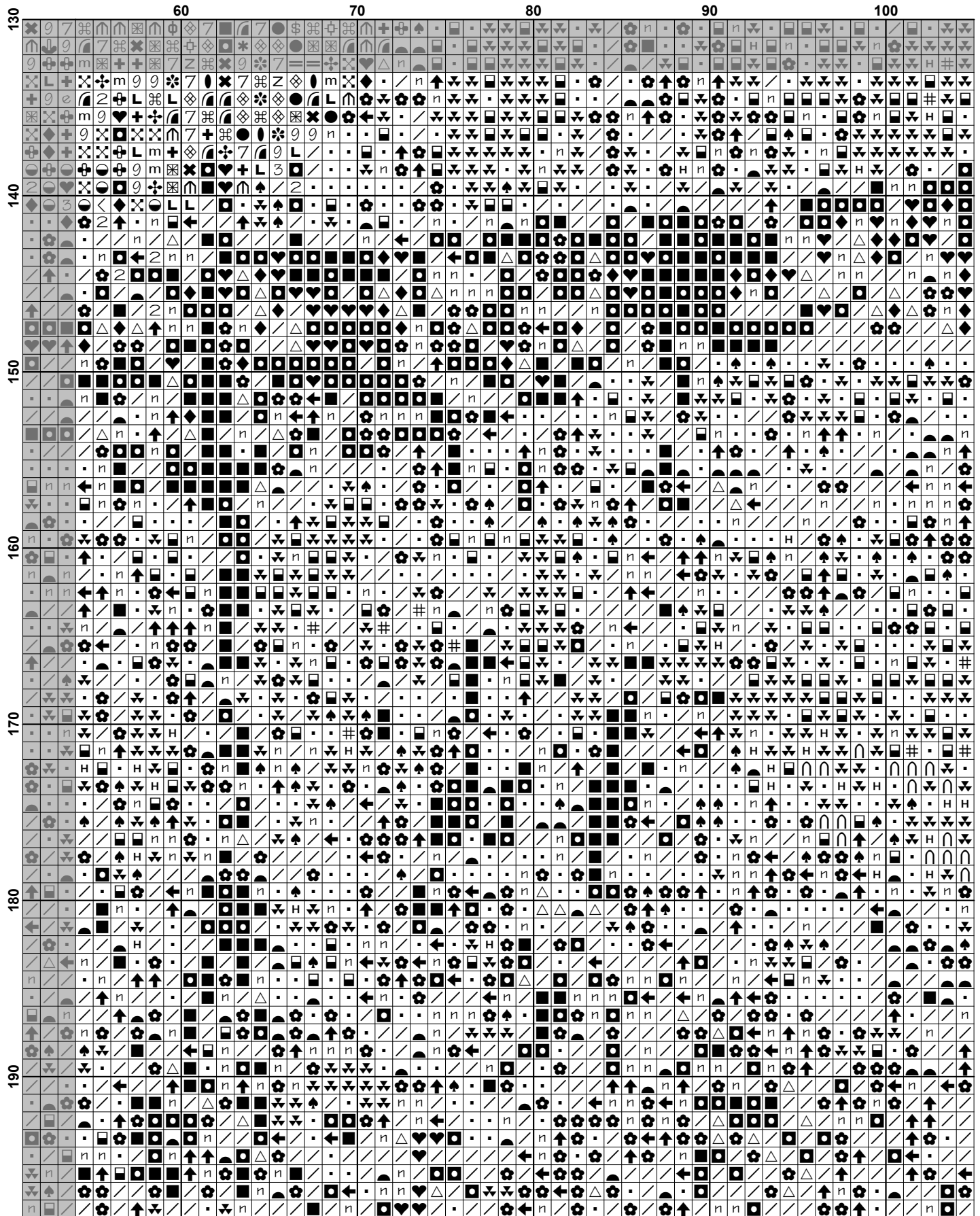




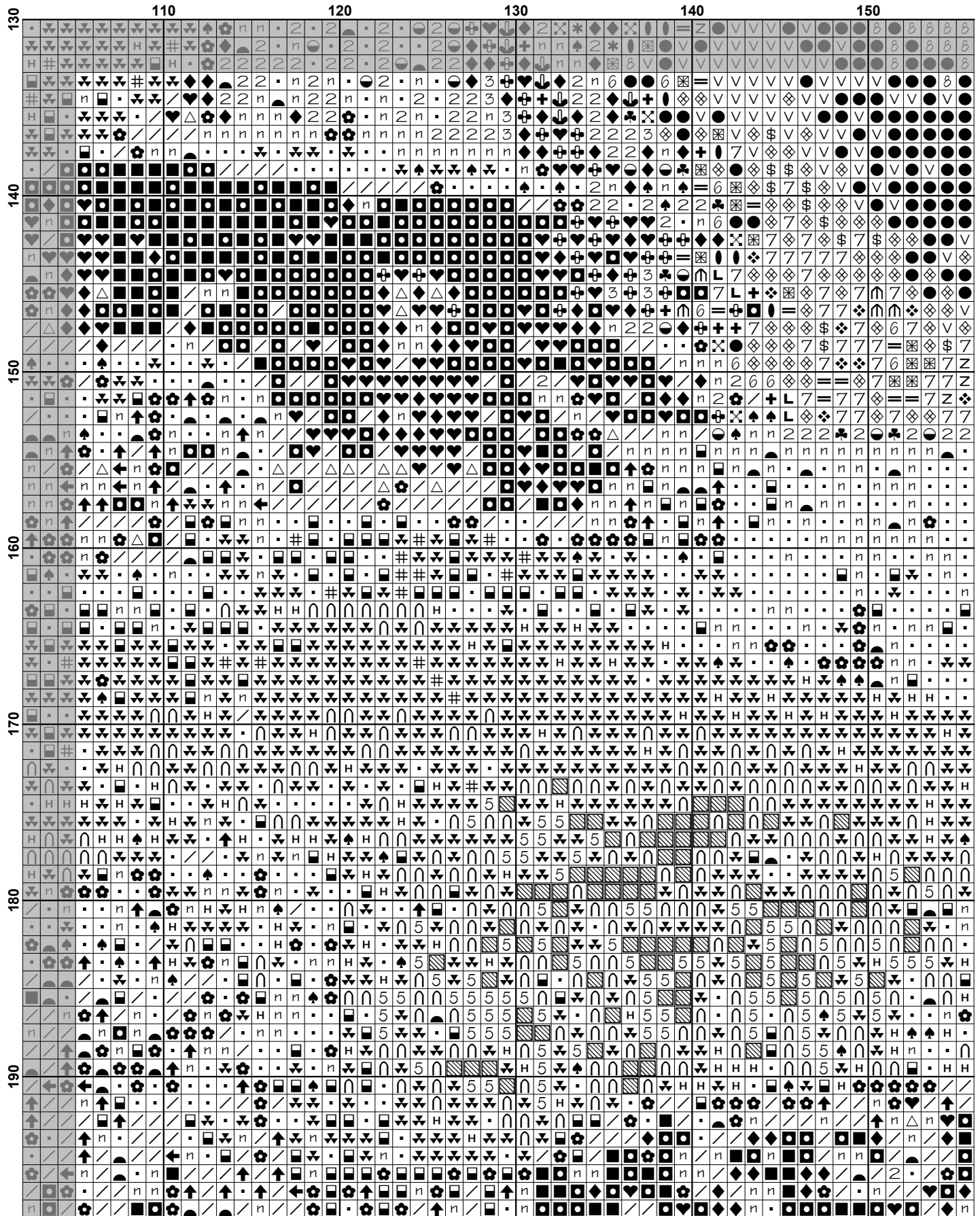


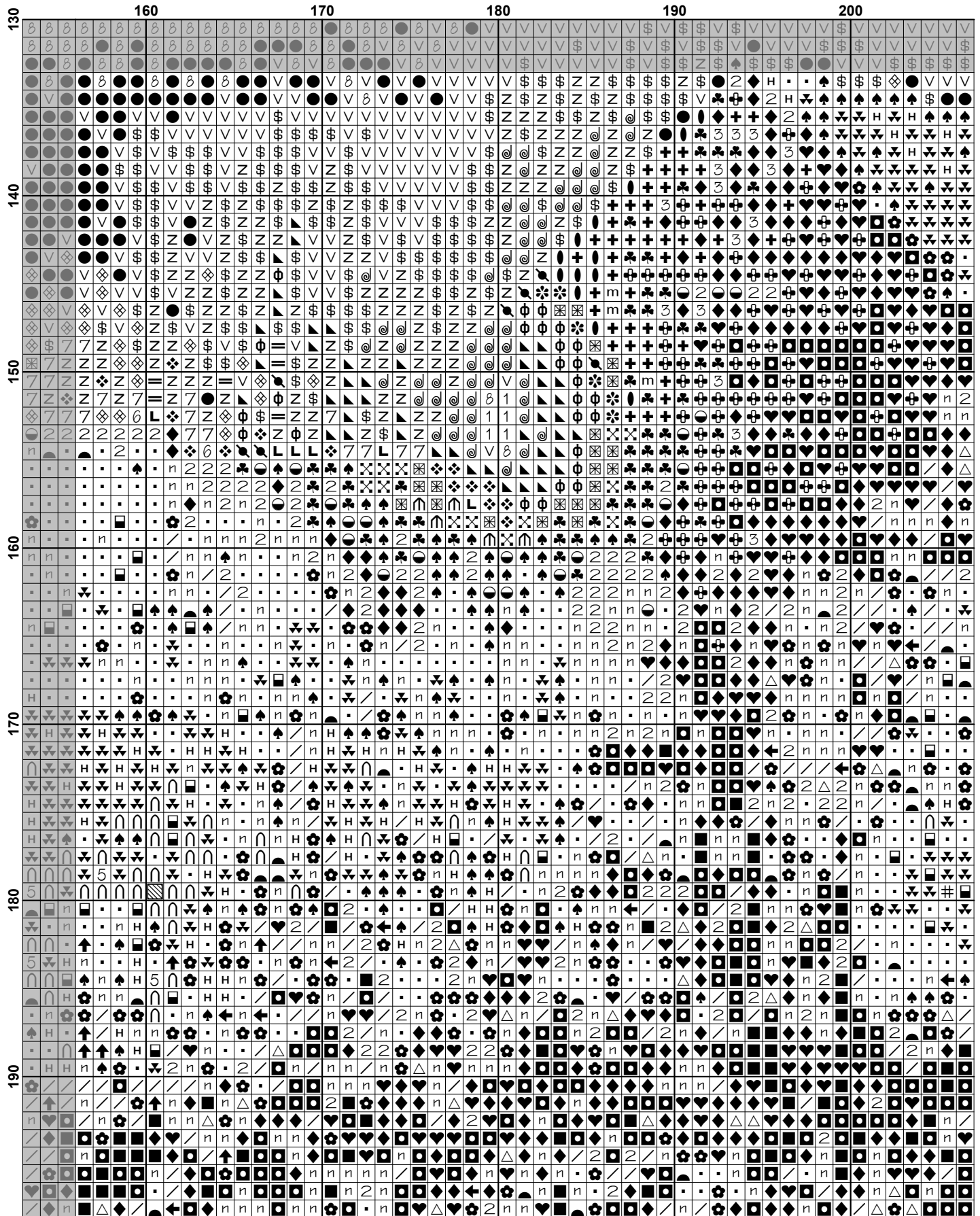


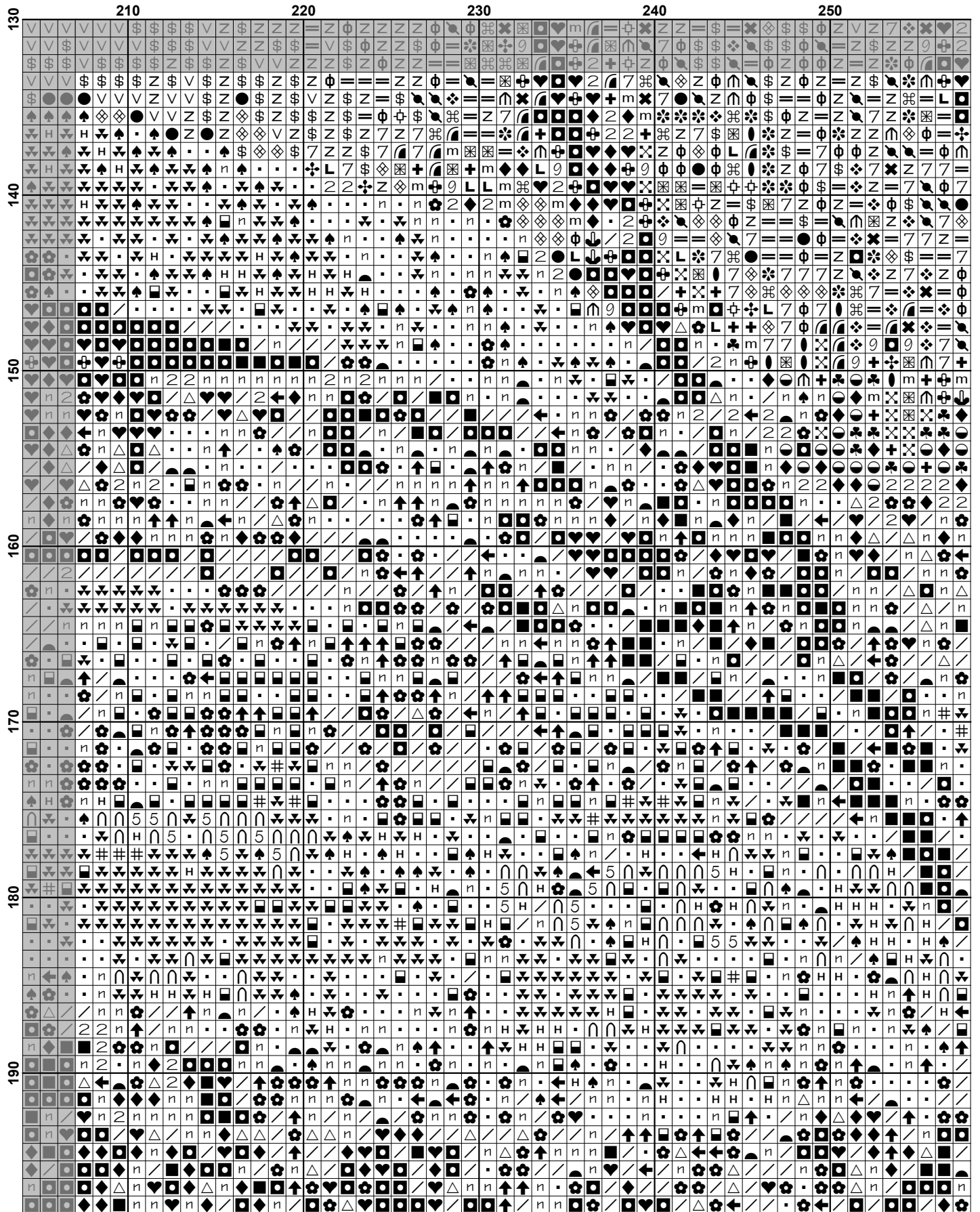


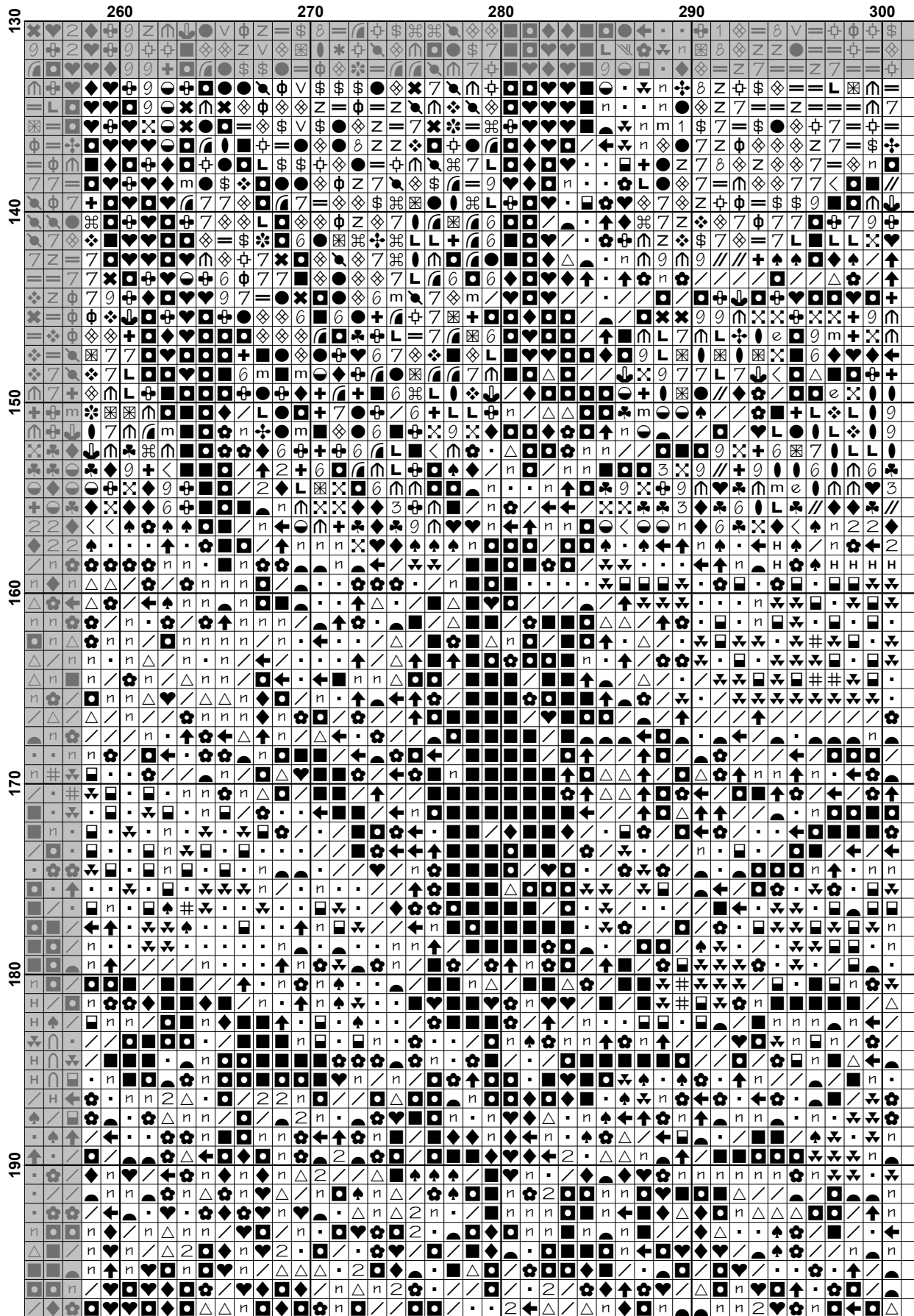


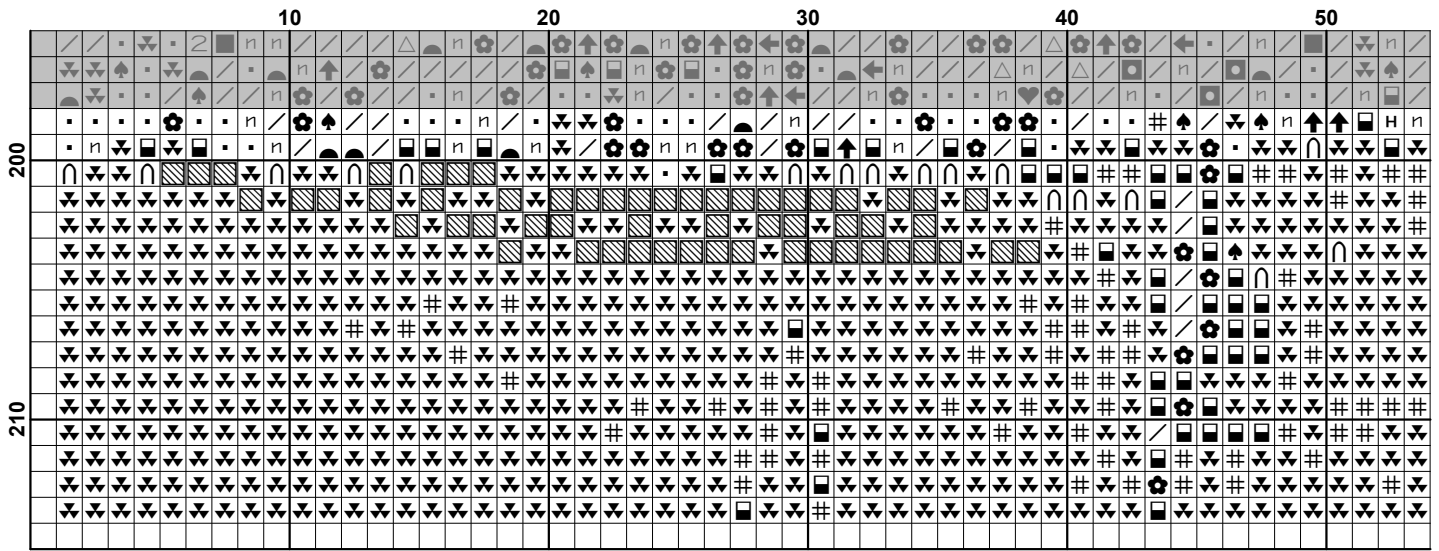


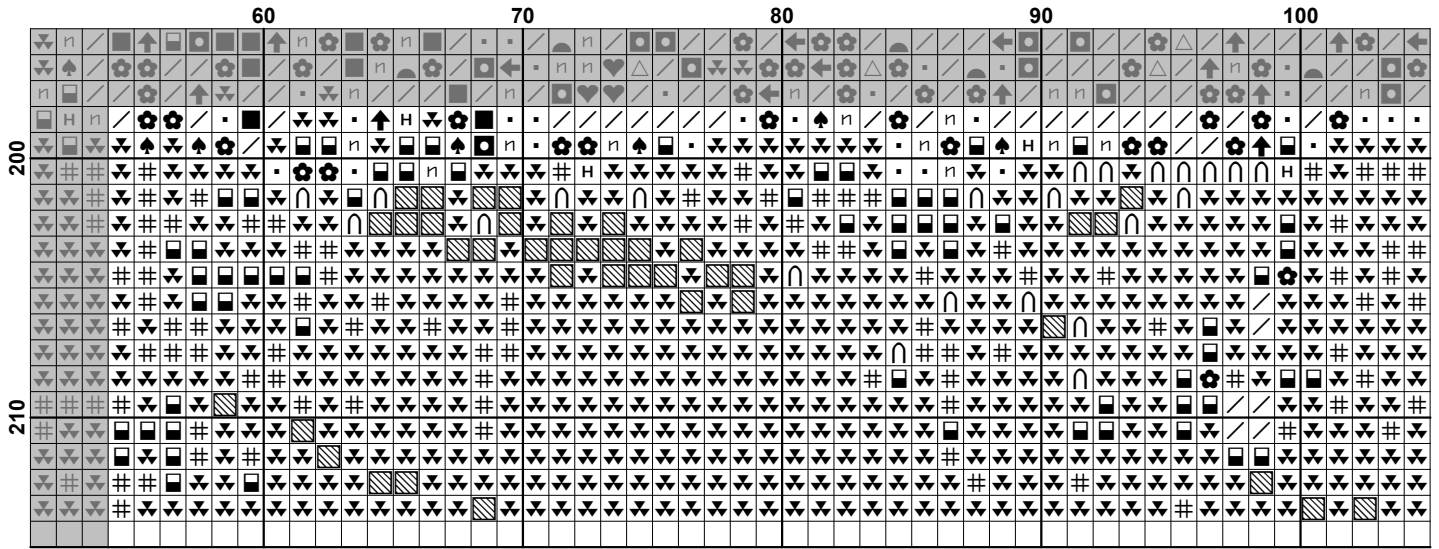


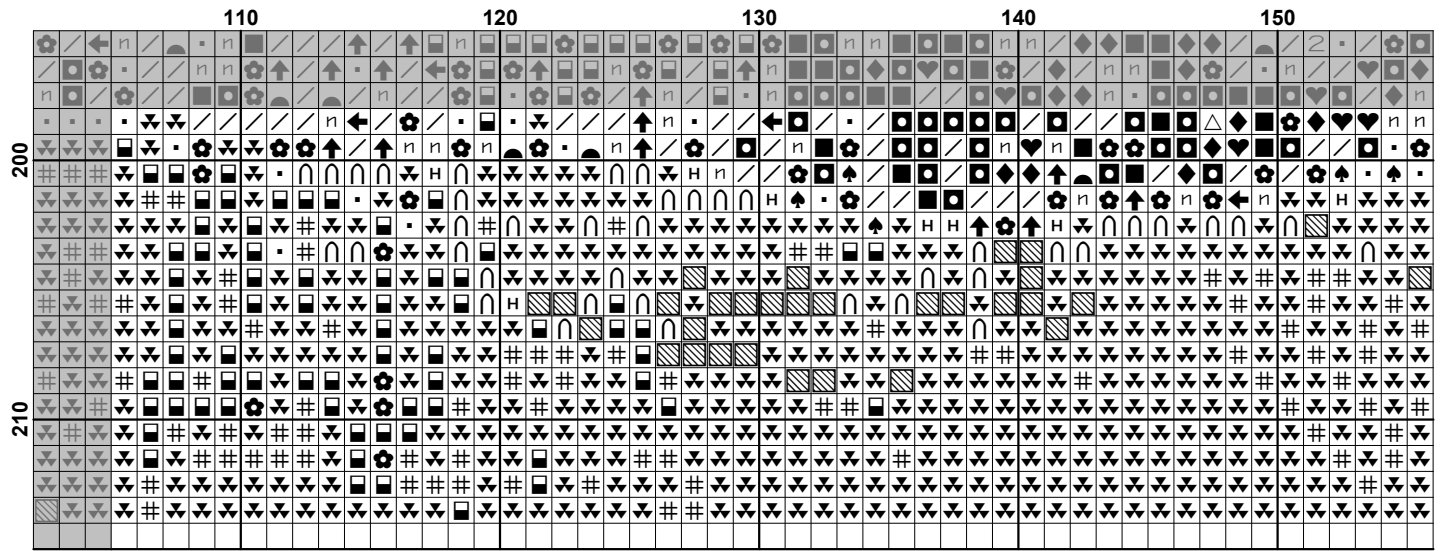


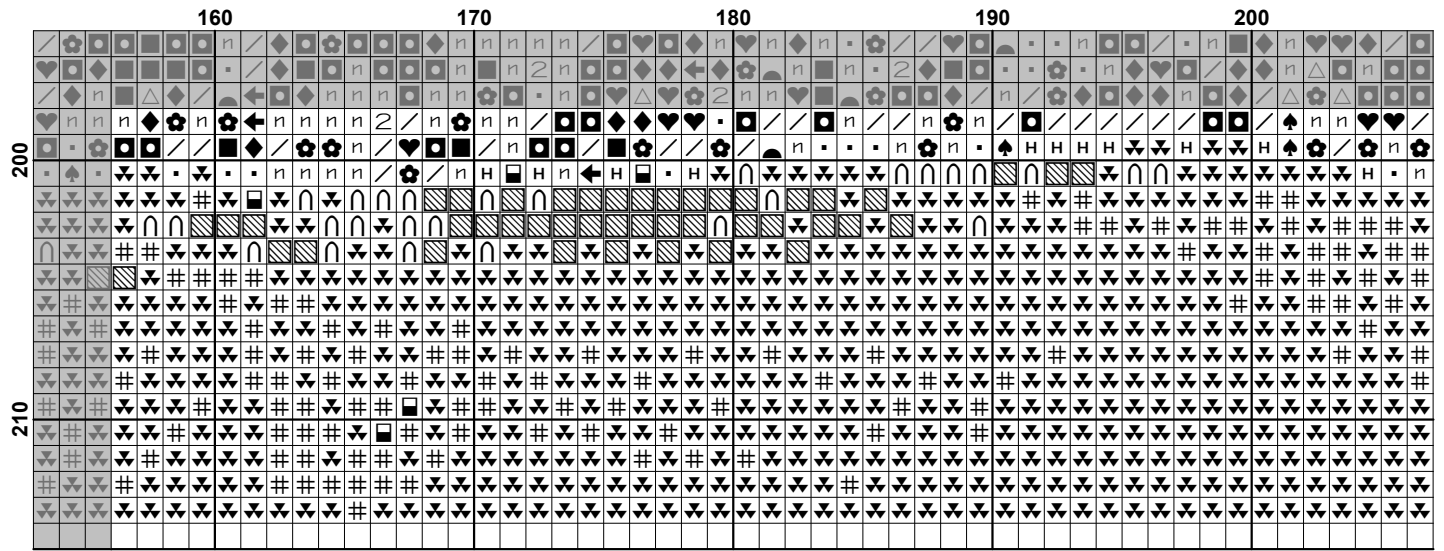




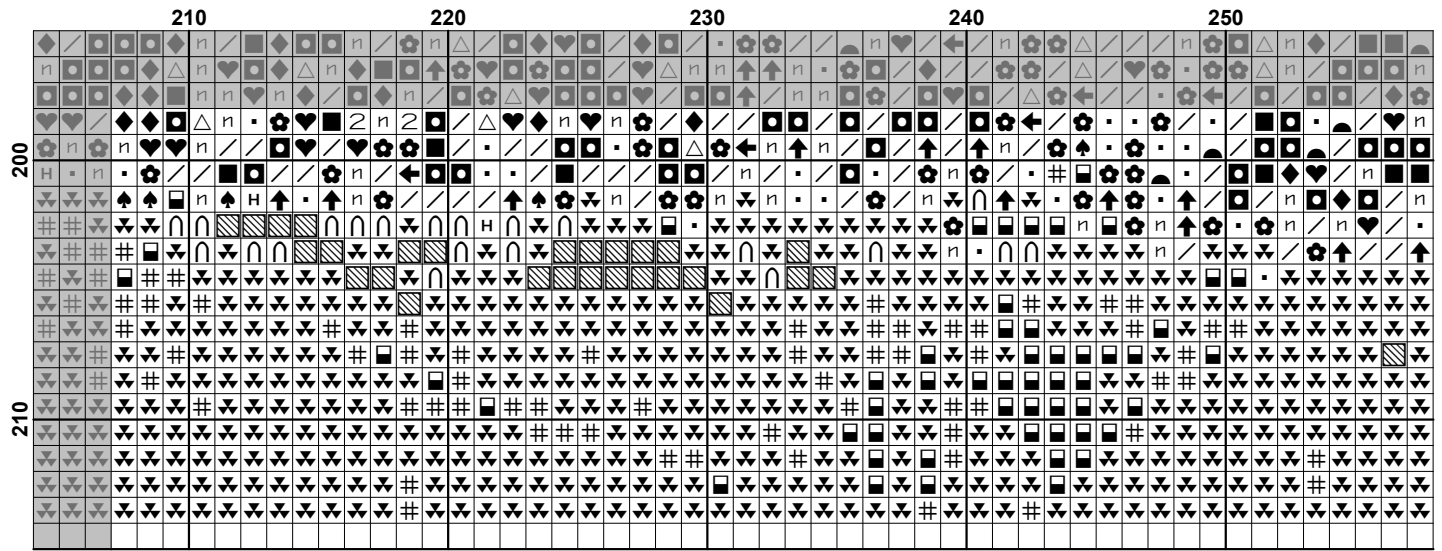


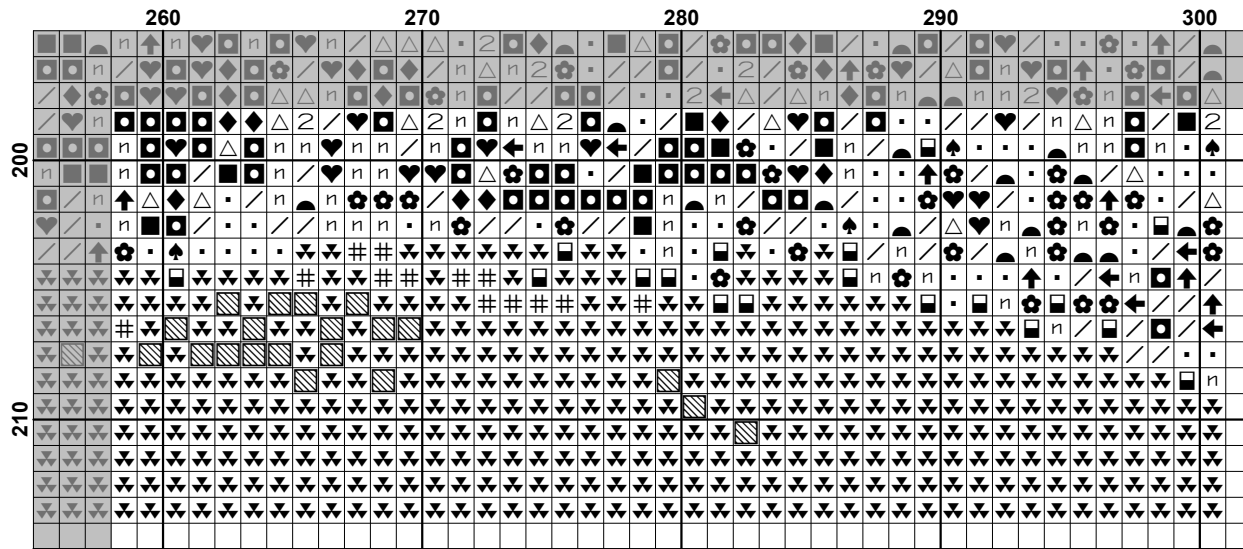









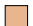

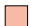

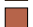




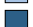
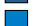
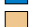









**Pattern Name:** Colourful Winter Sunrise  
**Designed By:** Image by moderate north wind - Pixabay  
**Company:** Artecy Cross Stitch  
**Copyright:** Copyright Artecy Cross Stitch. All rights Reserved.  
**Fabric:** Aida 14, White  
 300w X 213h Stitches  
**Size(s):** 14 Count, 21-3/8w X 15-1/8h in  
 16 Count, 18-3/4w X 13-1/4h in  
 18 Count, 16-5/8w X 11-3/4h in

**Floss Used for Full Stitches:**

Symbol	Strands	Type	Number	Color
	2	DMC	152	Shell Pink-MD LT
	2	DMC	160	Gray Blue-MD
	2	DMC	161	Gray Blue
	2	DMC	315	Antique Mauve-VY DK
	2	DMC	317	Pewter Gray
	2	DMC	318	Steel Gray-LT
	2	DMC	327	Violet-VY DK
	2	DMC	336	Navy Blue
	2	DMC	355	Terra Cotta-DK
	2	DMC	356	Terra Cotta-MD
	2	DMC	402	Mahogany-VY LT
	2	DMC	451	Shell Gray-DK
	2	DMC	550	Violet-VY DK
	2	DMC	738	Tan-VY LT
	2	DMC	741	Tangerine-MD
	2	DMC	754	Peach-LT
	2	DMC	760	Salmon
	2	DMC	779	Cocoa-DK
	2	DMC	791	Cornflower Blue-VY DK
	2	DMC	792	Cornflower Blue-DK
	2	DMC	796	Royal Blue-DK
	2	DMC	797	Royal Blue
	2	DMC	798	Delft Blue-DK
	2	DMC	803	Baby Blue-UL VY DK
	2	DMC	809	Delft Blue
	2	DMC	820	Royal Blue-VY DK
	2	DMC	823	Navy Blue-DK
	2	DMC	824	Blue-VY DK
	2	DMC	825	Blue-DK
	2	DMC	838	Beige Brown-VY DK
	2	DMC	842	Beige Brown-VY LT
	2	DMC	899	Rose-MD
	2	DMC	939	Navy Blue-VY DK
	2	DMC	951	Tawny-LT
	2	DMC	970	Pumpkin-LT
	2	DMC	995	Electric Blue-DK
	2	DMC	996	Electric Blue-MD
	2	DMC	3041	Antique Violet-MD
	2	DMC	3042	Antique Violet-LT
	2	DMC	3064	Desert Sand
	2	DMC	3721	Shell Pink-DK
	2	DMC	3722	Shell Pink-MD
	2	DMC	3727	Antique Mauve-LT
	2	DMC	3740	Antique Violet-DK
	2	DMC	3743	Antique Violet-VY LT
	2	DMC	3766	Peacock Blue-LT

Symbol	Strands	Type	Number	Color
	1	2	DMC 3770	Tawny-VY LT
	⊕	2	DMC 3771	Terra Cotta-UL VY LT
	⬇	2	DMC 3799	Pewter Gray-VY DK
	⊖	2	DMC 3824	Apricot-LT
	\$	2	DMC 3825	Pumpkin-Pale
	⊙	2	DMC 3830	Terra Cotta-MD
	+	2	DMC 3834	Grape-DK
	♠	2	DMC 3838	Lavender Blue-DK
	H	2	DMC 3839	Lavender Blue-MD
	5	2	DMC 3840	Lavender Blue-LT
	↑	2	DMC 3842	Wedgewood-DK
	#	2	DMC 3843	Electric Blue
	V	2	DMC 3856	Mahogany-UL VY LT
	⌘	2	DMC 3858	Rosewood-MD
	⊕	2	DMC 3860	Cocoa
	9	2	DMC 3861	Cocoa-LT
	*	2	DMC 3863	Mocha Beige-MD
	↘	2	DMC 3864	Mocha Beige-LT

**Notes:**

The middle of this pattern can be found on page 9 and is 151 stitches across and 108 stitches down.

Pattern layout using page numbers in top left.

```

1  2  3  4  5  6
7  8  9 10 11 12
13 14 15 16 17 18
19 20 21 22 23 24

```

**Usage Summary**

**Strands Per Skein:** 6

**Skein Length:** 313.0 in

Type	Number	Full	Half	Quarter	Petite	Back(in)	Str(in)	Spec(in)	French	Bead	Skein Est.
DMC 152	152	389	0	0	0	0.0	0.0	0.0	0	0	1.000
DMC 160	160	150	0	0	0	0.0	0.0	0.0	0	0	1.000
DMC 161	161	277	0	0	0	0.0	0.0	0.0	0	0	1.000
DMC 315	315	188	0	0	0	0.0	0.0	0.0	0	0	1.000
DMC 317	317	442	0	0	0	0.0	0.0	0.0	0	0	1.000
DMC 318	318	168	0	0	0	0.0	0.0	0.0	0	0	1.000
DMC 327	327	109	0	0	0	0.0	0.0	0.0	0	0	1.000
DMC 336	336	1051	0	0	0	0.0	0.0	0.0	0	0	1.000
DMC 355	355	104	0	0	0	0.0	0.0	0.0	0	0	1.000
DMC 356	356	710	0	0	0	0.0	0.0	0.0	0	0	1.000
DMC 402	402	926	0	0	0	0.0	0.0	0.0	0	0	1.000
DMC 451	451	334	0	0	0	0.0	0.0	0.0	0	0	1.000
DMC 550	550	602	0	0	0	0.0	0.0	0.0	0	0	1.000
DMC 738	738	183	0	0	0	0.0	0.0	0.0	0	0	1.000
DMC 741	741	57	0	0	0	0.0	0.0	0.0	0	0	1.000
DMC 754	754	2542	0	0	0	0.0	0.0	0.0	0	0	2.000
DMC 760	760	218	0	0	0	0.0	0.0	0.0	0	0	1.000
DMC 779	779	532	0	0	0	0.0	0.0	0.0	0	0	1.000
DMC 791	791	1044	0	0	0	0.0	0.0	0.0	0	0	1.000
DMC 792	792	431	0	0	0	0.0	0.0	0.0	0	0	1.000
DMC 796	796	1651	0	0	0	0.0	0.0	0.0	0	0	1.000
DMC 797	797	2137	0	0	0	0.0	0.0	0.0	0	0	1.000
DMC 798	798	2698	0	0	0	0.0	0.0	0.0	0	0	2.000
DMC 803	803	361	0	0	0	0.0	0.0	0.0	0	0	1.000
DMC 809	809	474	0	0	0	0.0	0.0	0.0	0	0	1.000
DMC 820	820	2866	0	0	0	0.0	0.0	0.0	0	0	2.000
DMC 823	823	2710	0	0	0	0.0	0.0	0.0	0	0	2.000
DMC 824	824	311	0	0	0	0.0	0.0	0.0	0	0	1.000
DMC 825	825	548	0	0	0	0.0	0.0	0.0	0	0	1.000
DMC 838	838	181	0	0	0	0.0	0.0	0.0	0	0	1.000
DMC 842	842	544	0	0	0	0.0	0.0	0.0	0	0	1.000
DMC 899	899	58	0	0	0	0.0	0.0	0.0	0	0	1.000
DMC 939	939	1424	0	0	0	0.0	0.0	0.0	0	0	1.000
DMC 951	951	3431	0	0	0	0.0	0.0	0.0	0	0	2.000
DMC 970	970	48	0	0	0	0.0	0.0	0.0	0	0	1.000
DMC 995	995	1002	0	0	0	0.0	0.0	0.0	0	0	1.000
DMC 996	996	4702	0	0	0	0.0	0.0	0.0	0	0	3.000
DMC 3041	3041	469	0	0	0	0.0	0.0	0.0	0	0	1.000
DMC 3042	3042	407	0	0	0	0.0	0.0	0.0	0	0	1.000
DMC 3064	3064	830	0	0	0	0.0	0.0	0.0	0	0	1.000
DMC 3721	3721	85	0	0	0	0.0	0.0	0.0	0	0	1.000
DMC 3722	3722	159	0	0	0	0.0	0.0	0.0	0	0	1.000
DMC 3727	3727	288	0	0	0	0.0	0.0	0.0	0	0	1.000
DMC 3740	3740	417	0	0	0	0.0	0.0	0.0	0	0	1.000
DMC 3743	3743	324	0	0	0	0.0	0.0	0.0	0	0	1.000
DMC 3766	3766	308	0	0	0	0.0	0.0	0.0	0	0	1.000
DMC 3770	3770	16459	0	0	0	0.0	0.0	0.0	0	0	8.000
DMC 3771	3771	466	0	0	0	0.0	0.0	0.0	0	0	1.000
DMC 3799	3799	473	0	0	0	0.0	0.0	0.0	0	0	1.000
DMC 3824	3824	540	0	0	0	0.0	0.0	0.0	0	0	1.000
DMC 3825	3825	857	0	0	0	0.0	0.0	0.0	0	0	1.000
DMC 3830	3830	233	0	0	0	0.0	0.0	0.0	0	0	1.000

Type	Number	Full	Half	Quarter	Petite	Back(in)	Str(in)	Spec(in)	French	Bead	Skein Est.
DMC	3834	353	0	0	0	0.0	0.0	0.0	0	0	1.000
DMC	3838	455	0	0	0	0.0	0.0	0.0	0	0	1.000
DMC	3839	305	0	0	0	0.0	0.0	0.0	0	0	1.000
DMC	3840	107	0	0	0	0.0	0.0	0.0	0	0	1.000
DMC	3842	476	0	0	0	0.0	0.0	0.0	0	0	1.000
DMC	3843	470	0	0	0	0.0	0.0	0.0	0	0	1.000
DMC	3856	1672	0	0	0	0.0	0.0	0.0	0	0	1.000
DMC	3858	357	0	0	0	0.0	0.0	0.0	0	0	1.000
DMC	3860	371	0	0	0	0.0	0.0	0.0	0	0	1.000
DMC	3861	794	0	0	0	0.0	0.0	0.0	0	0	1.000
DMC	3863	352	0	0	0	0.0	0.0	0.0	0	0	1.000
DMC	3864	270	0	0	0	0.0	0.0	0.0	0	0	1.000