

Artecy

CROSS STITCH

Christmas Fractal - Crop



* Original image copyright of Christopher Ursitti - Fotolia.
Cross Stitch Design by Tereena Clarke.

Completed Size = 140w x 140h Stitches

14 Count, 10w x 10h inches (25cm x 25cm)

16 Count, 9w x 9h inches (23cm x 23cm)

18 Count, 8w x 8h inches (20cm x 20cm)

Uses 32 DMC cotton colours. Only full cross stitches are used in this pattern.

Pattern Instructions

* This pattern can be worked on any fabric type, colour or count you prefer. To work out the size of the finished article, take the number of stitches wide and high and divide it by the count of your fabric (e.g. 14,16,18 count aida etc) to get the size in inches. Times it by 2.54 to get centimetres. We have the sizes in inches shown on the previous page. Also leave at least a few inches of fabric around each side of the design to assist in framing. The higher the fabric count the smaller the completed project will be.

* To put the pattern together look in the top and bottom corners. The page numbers in brackets show which page number it joins up to. Page 1 always starts at the top left hand side of the pattern. Our pages also have a shaded grey section. This indicates a 3 row overlap from adjoining pages to assist with reading the pattern. PLEASE DO NOT RESTITCH THIS AREA.

* You should begin at the centre of the pattern. To find the centre of the pattern it is just a matter of laying the pattern out and locating the arrows at the top and left hand side of the patterns, they are determined by dividing the stitch numbers wide and high in half. Where the two points meet in the middle, that is the centre.

* If you need more assistance to find the middle of your pattern or the page layout, please see the notes section on the colour symbol chart. The easiest way to stitch this pattern, as it has multiple pages, is to stitch one page at a time.

* We suggest using two strands of floss for each stitch and one strand for backstitching if the pattern calls for it.

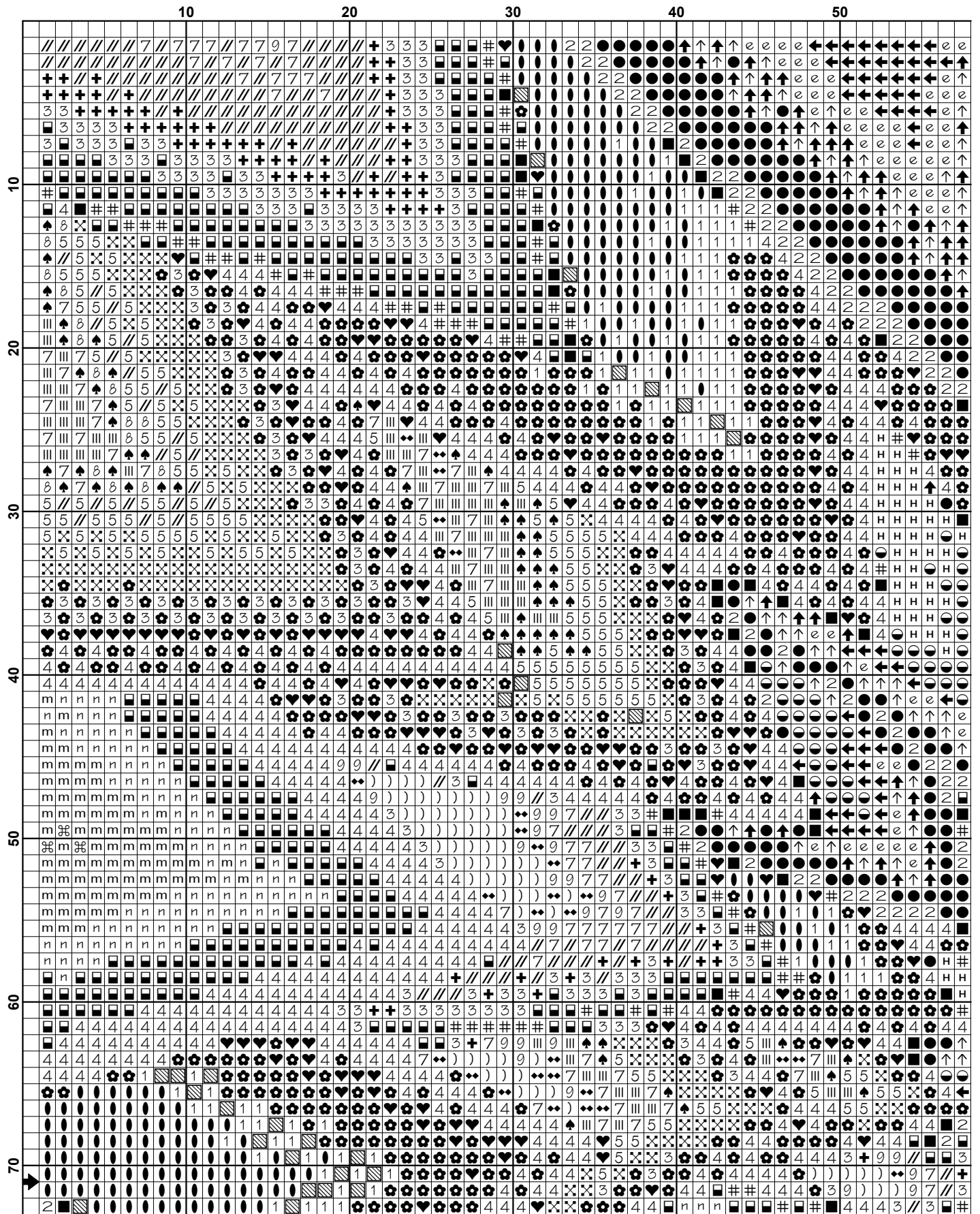
We hope you enjoy stitching our pattern.

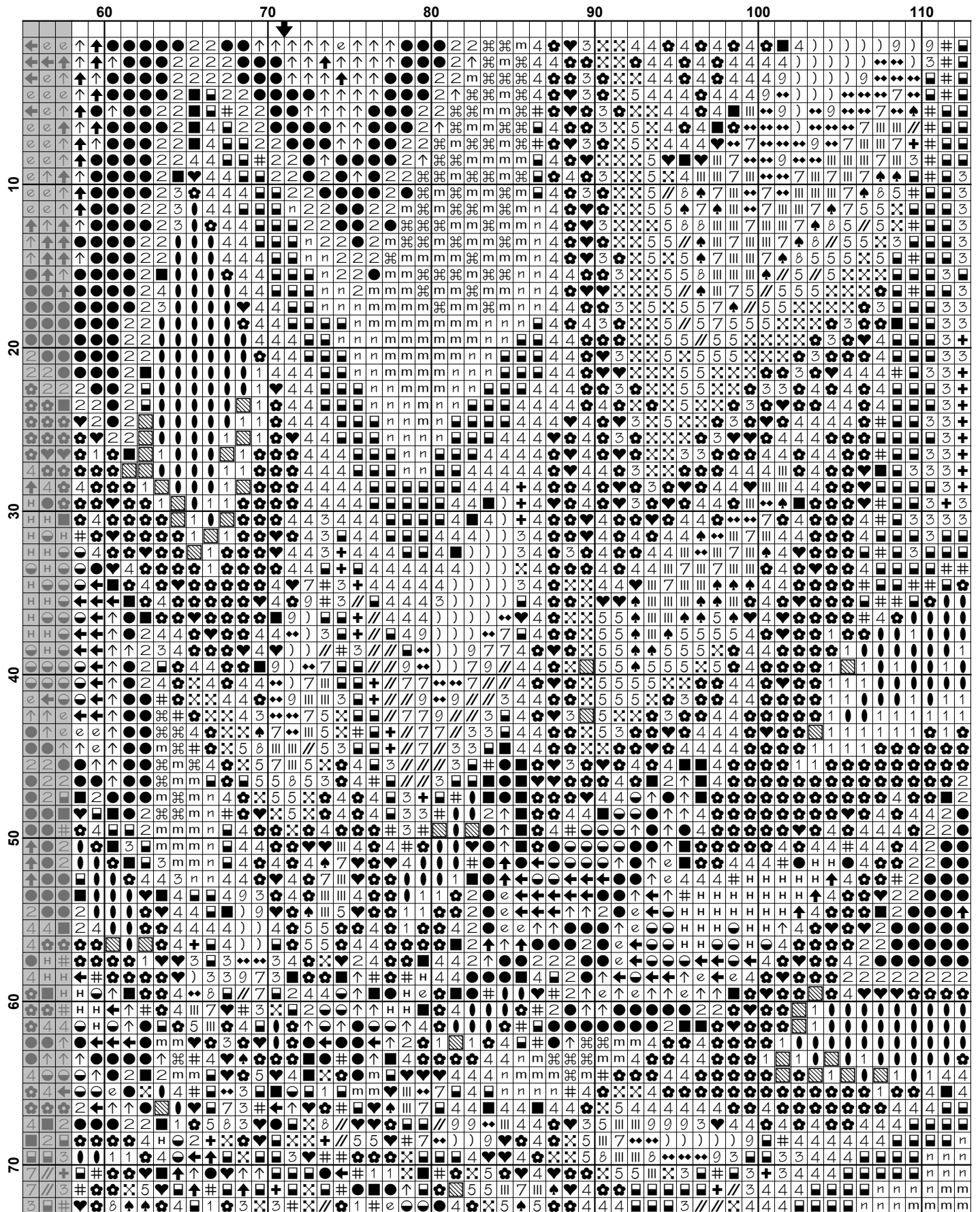
Thanks and Best Wishes
Tereena Clarke

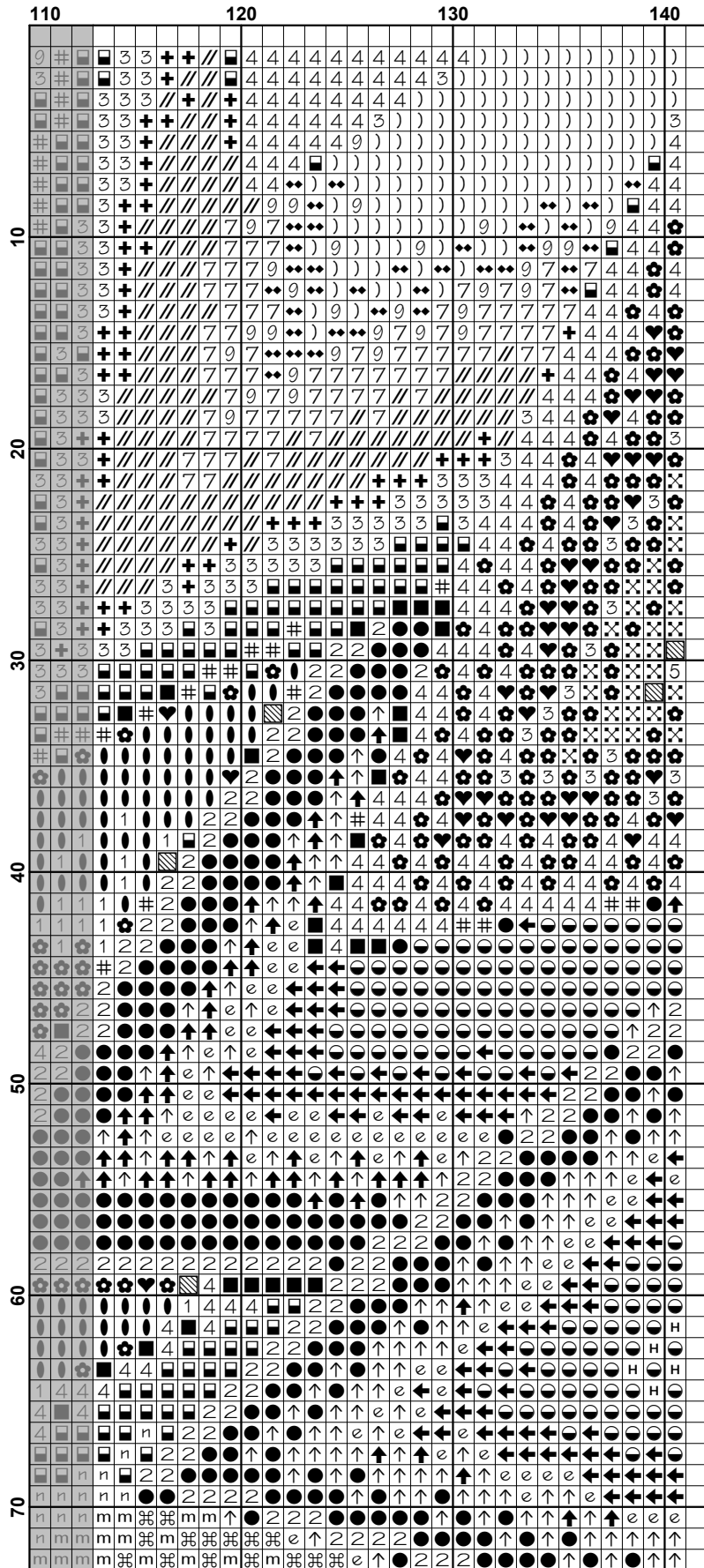
Artecy Cross Stitch
Po Box 3474
Tuggerah, NSW 2259
Australia

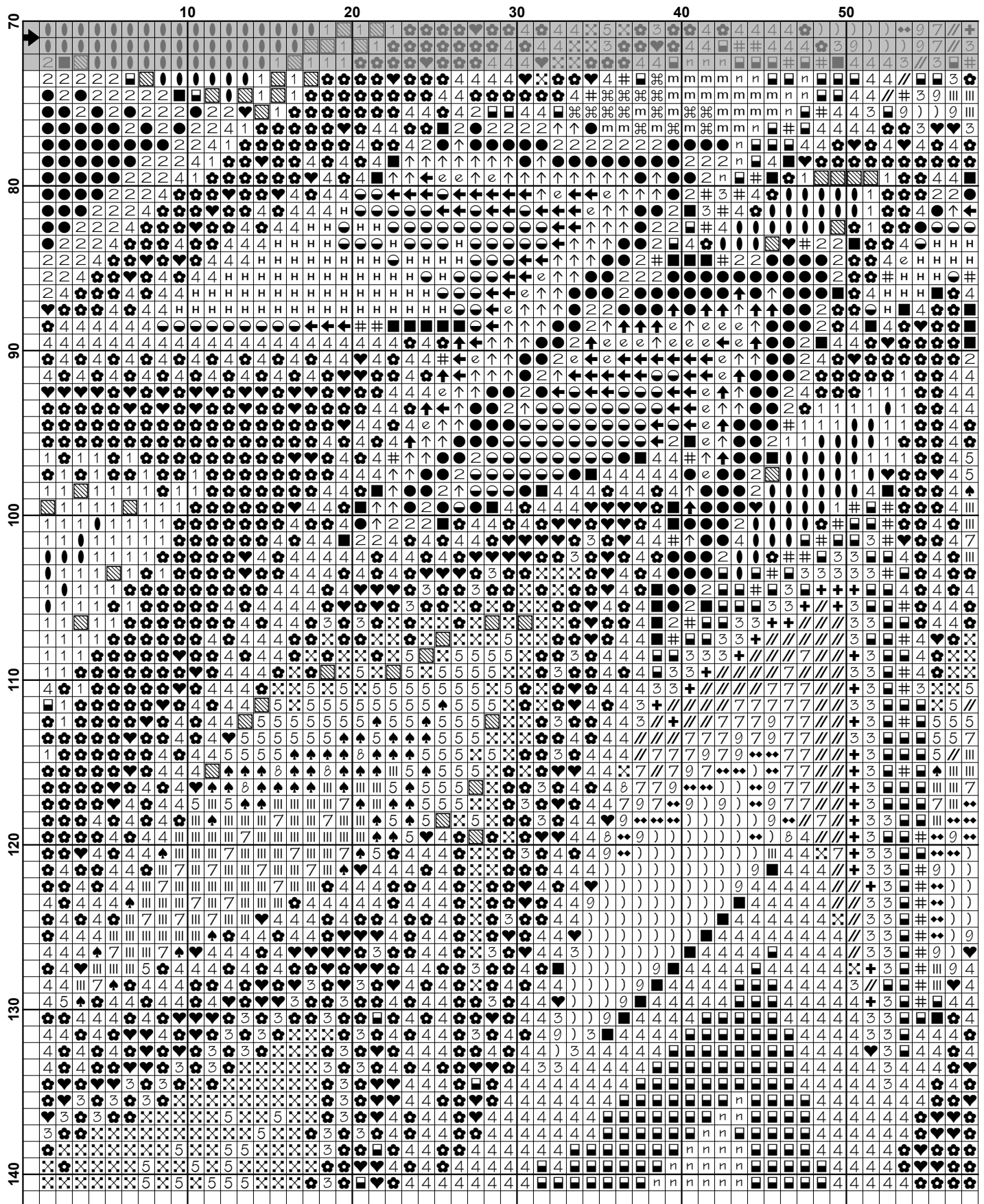
Websites: www.artecy.com and www.artecyshop.com
Email: artecy@artecy.com or stitch@artecyshop.com

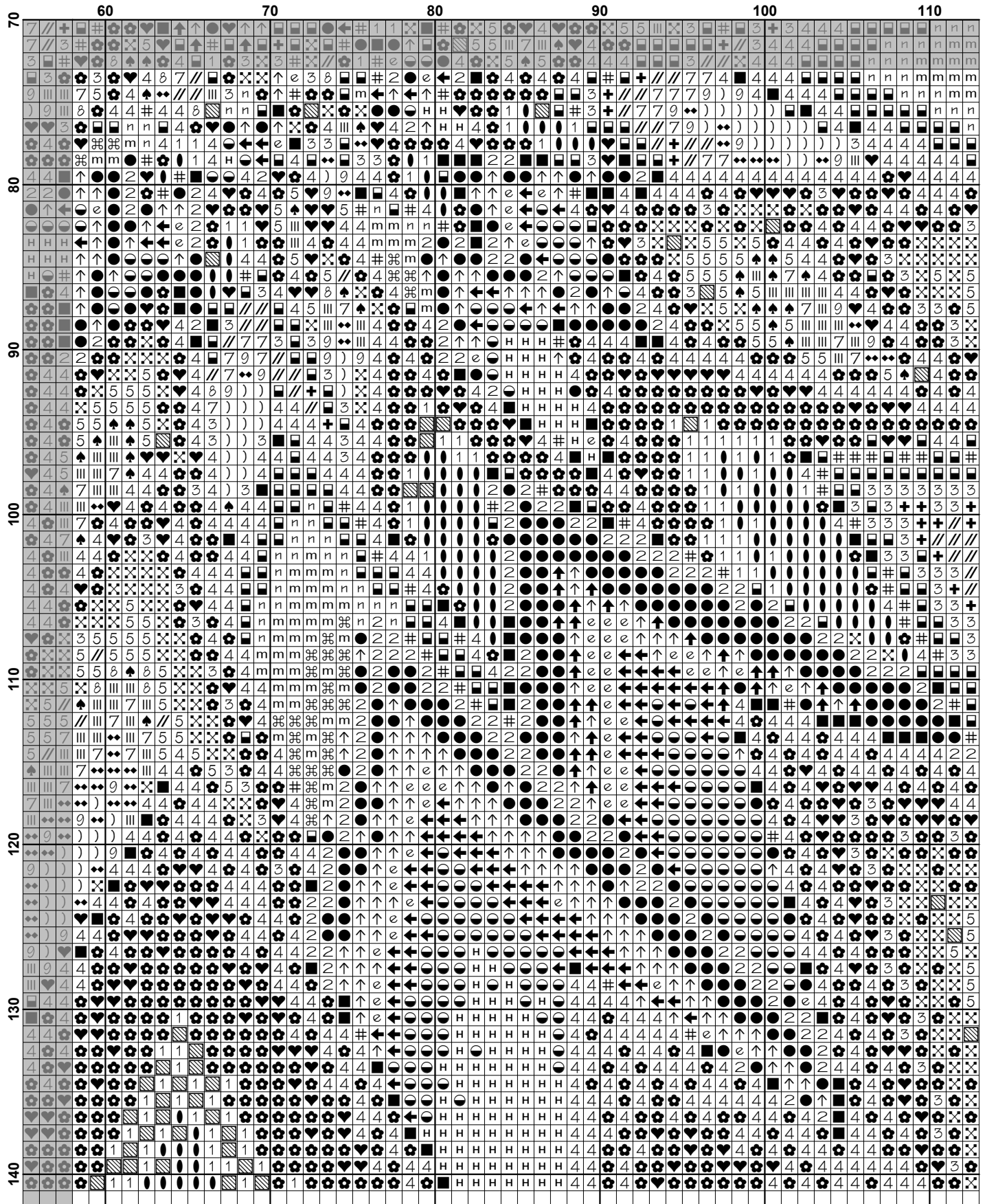
*Patterns are strictly for personal use only. It is against our copyright to make kits for sale from our designs or to sell, copy or redistribute this pattern in any form. You may not upload our patterns to any internet forums or groups or any other website. You may make 1 copy of this pattern for a working copy for your own personal use if needed.

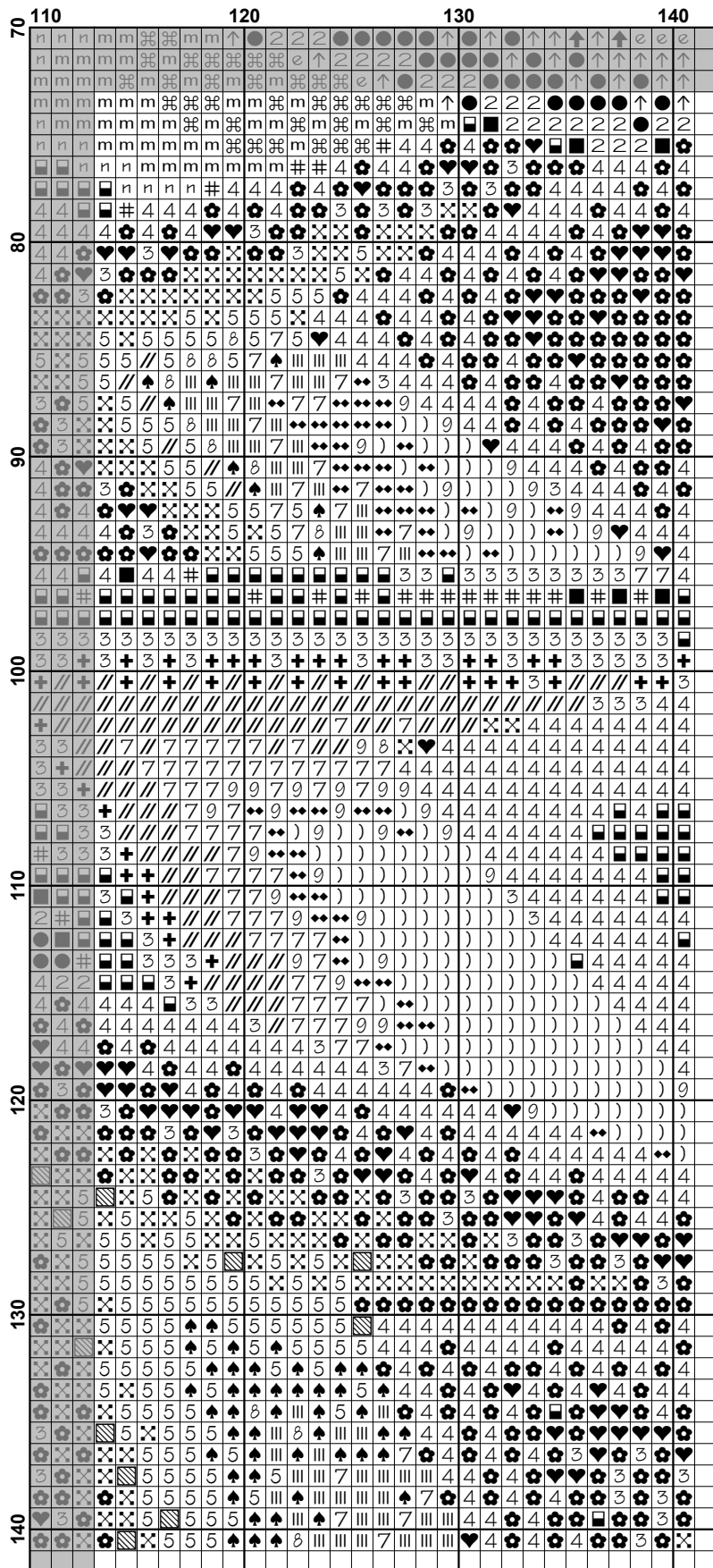












Pattern Name: Christmas Fractal - Crop
Designed By: Image copyright of Christopher Ursitti
Company: Artecy Cross Stitch
Copyright: Copyright Artecy Cross Stitch. All rights Reserved.
Fabric: Aida 14, White
 140w X 140h Stitches
Size(s): 14 Count, 10w X 10h in
 16 Count, 8-3/4w X 8-3/4h in
 18 Count, 7-3/4w X 7-3/4h in

Floss Used for Full Stitches:

Symbol	Strands	Type	Number	Color
	2	DMC	300	Mahogany-VY DK
	2	DMC	307	Lemon
	2	DMC	310	Black
	2	DMC	400	Mahogany-DK
	2	DMC	498	Christmas Red-DK
	2	DMC	608	Bright Orange
	2	DMC	666	Christmas Red-BRT
	2	DMC	699	Christmas Green
	2	DMC	700	Christmas Green-BRT
	2	DMC	720	Orange Spice-DK
	2	DMC	730	Olive Green-VY DK
	2	DMC	740	Tangerine
	2	DMC	741	Tangerine-MD
	2	DMC	742	Tangerine-LT
	2	DMC	780	Topaz-UL VY DK
	2	DMC	782	Topaz-DK
	2	DMC	814	Garnet-DK
	2	DMC	817	Coral Red-VY DK
	2	DMC	890	Pistachio Green-UL DK
	2	DMC	900	Burnt Orange-DK
	2	DMC	906	Parrot Green-MD
	2	DMC	907	Parrot Green-LT
	2	DMC	910	Emerald Green-DK
	2	DMC	911	Emerald Green-MD
	2	DMC	912	Emerald Green-LT
	2	DMC	919	Red Copper
	2	DMC	938	Coffee Brown-UL DK
	2	DMC	976	Golden Brown-MD
	2	DMC	986	Forest Green-VY DK
	2	DMC	3371	Black Brown
	2	DMC	3820	Straw-DK
	2	DMC	3852	Straw-VY DK

Notes:

The middle of this pattern can be found on page 2 and is 71 stitches across and 71 stitches down.

Pattern layout using page numbers in top left.

1 2 3
 4 5 6

Usage Summary

Strands Per Skein: 6

Skein Length: 313.0 in

Type	Number	Full	Half	Quarter	Petite	Back(in)	Str(in)	Spec(in)	French	Bead	Skein Est.
DMC 300	300	1257	0	0	0	0.0	0.0	0.0	0	0	1.000
DMC 307	307	567	0	0	0	0.0	0.0	0.0	0	0	1.000
DMC 310	310	606	0	0	0	0.0	0.0	0.0	0	0	1.000
DMC 400	400	759	0	0	0	0.0	0.0	0.0	0	0	1.000
DMC 498	498	757	0	0	0	0.0	0.0	0.0	0	0	1.000
DMC 608	608	670	0	0	0	0.0	0.0	0.0	0	0	1.000
DMC 666	666	397	0	0	0	0.0	0.0	0.0	0	0	1.000
DMC 699	699	588	0	0	0	0.0	0.0	0.0	0	0	1.000
DMC 700	700	265	0	0	0	0.0	0.0	0.0	0	0	1.000
DMC 720	720	586	0	0	0	0.0	0.0	0.0	0	0	1.000
DMC 730	730	264	0	0	0	0.0	0.0	0.0	0	0	1.000
DMC 740	740	242	0	0	0	0.0	0.0	0.0	0	0	1.000
DMC 741	741	348	0	0	0	0.0	0.0	0.0	0	0	1.000
DMC 742	742	247	0	0	0	0.0	0.0	0.0	0	0	1.000
DMC 780	780	246	0	0	0	0.0	0.0	0.0	0	0	1.000
DMC 782	782	555	0	0	0	0.0	0.0	0.0	0	0	1.000
DMC 814	814	2775	0	0	0	0.0	0.0	0.0	0	0	2.000
DMC 817	817	3235	0	0	0	0.0	0.0	0.0	0	0	2.000
DMC 890	890	1139	0	0	0	0.0	0.0	0.0	0	0	1.000
DMC 900	900	152	0	0	0	0.0	0.0	0.0	0	0	1.000
DMC 906	906	324	0	0	0	0.0	0.0	0.0	0	0	1.000
DMC 907	907	155	0	0	0	0.0	0.0	0.0	0	0	1.000
DMC 910	910	396	0	0	0	0.0	0.0	0.0	0	0	1.000
DMC 911	911	560	0	0	0	0.0	0.0	0.0	0	0	1.000
DMC 912	912	286	0	0	0	0.0	0.0	0.0	0	0	1.000
DMC 919	919	799	0	0	0	0.0	0.0	0.0	0	0	1.000
DMC 938	938	299	0	0	0	0.0	0.0	0.0	0	0	1.000
DMC 976	976	61	0	0	0	0.0	0.0	0.0	0	0	1.000
DMC 986	986	182	0	0	0	0.0	0.0	0.0	0	0	1.000
DMC 3371	3371	297	0	0	0	0.0	0.0	0.0	0	0	1.000
DMC 3820	3820	179	0	0	0	0.0	0.0	0.0	0	0	1.000
DMC 3852	3852	407	0	0	0	0.0	0.0	0.0	0	0	1.000