

Byodo-In Temple



* Original image©Christian Joudrey - Unsplash
Cross Stitch Design by Tereena Clarke.

Completed Size = 300w x 200h Stitches

14 Count, 21.5w x 14.5h inches (55cm x 37cm)

16 Count, 19w x 12.5h inches (48cm x 32cm)

18 Count, 17w x 11.5h inches (43cm x 29cm)

Uses 79 DMC cotton colours. Only full cross stitches are used in this pattern.

Pattern Instructions

* This pattern can be worked on any fabric type, colour or count you prefer. To work out the size of the finished article, take the number of stitches wide and high and divide it by the count of your fabric (e.g. 14,16,18 count aida etc) to get the size in inches. Times it by 2.54 to get centimetres. We have the sizes in inches shown on the previous page. Also leave at least a few inches of fabric around each side of the design to assist in framing. The higher the fabric count the smaller the completed project will be.

* To put the pattern together look in the top and bottom corners. The page numbers in brackets show which page number it joins up to. Page 1 always starts at the top left hand side of the pattern. Our pages also have a shaded grey section. This indicates a 3 row overlap from adjoining pages to assist with reading the pattern. PLEASE DO NOT RESTITCH THIS AREA.

* You should begin at the centre of the pattern. To find the centre of the pattern it is just a matter of laying the pattern out and locating the arrows at the top and left hand side of the patterns, they are determined by dividing the stitch numbers wide and high in half. Where the two points meet in the middle, that is the centre.

* If you need more assistance to find the middle of your pattern or the page layout, please see the notes section on the colour symbol chart. The easiest way to stitch this pattern, as it has multiple pages, is to stitch one page at a time.

* We suggest using two strands of floss for each stitch and one strand for backstitching if the pattern calls for it.

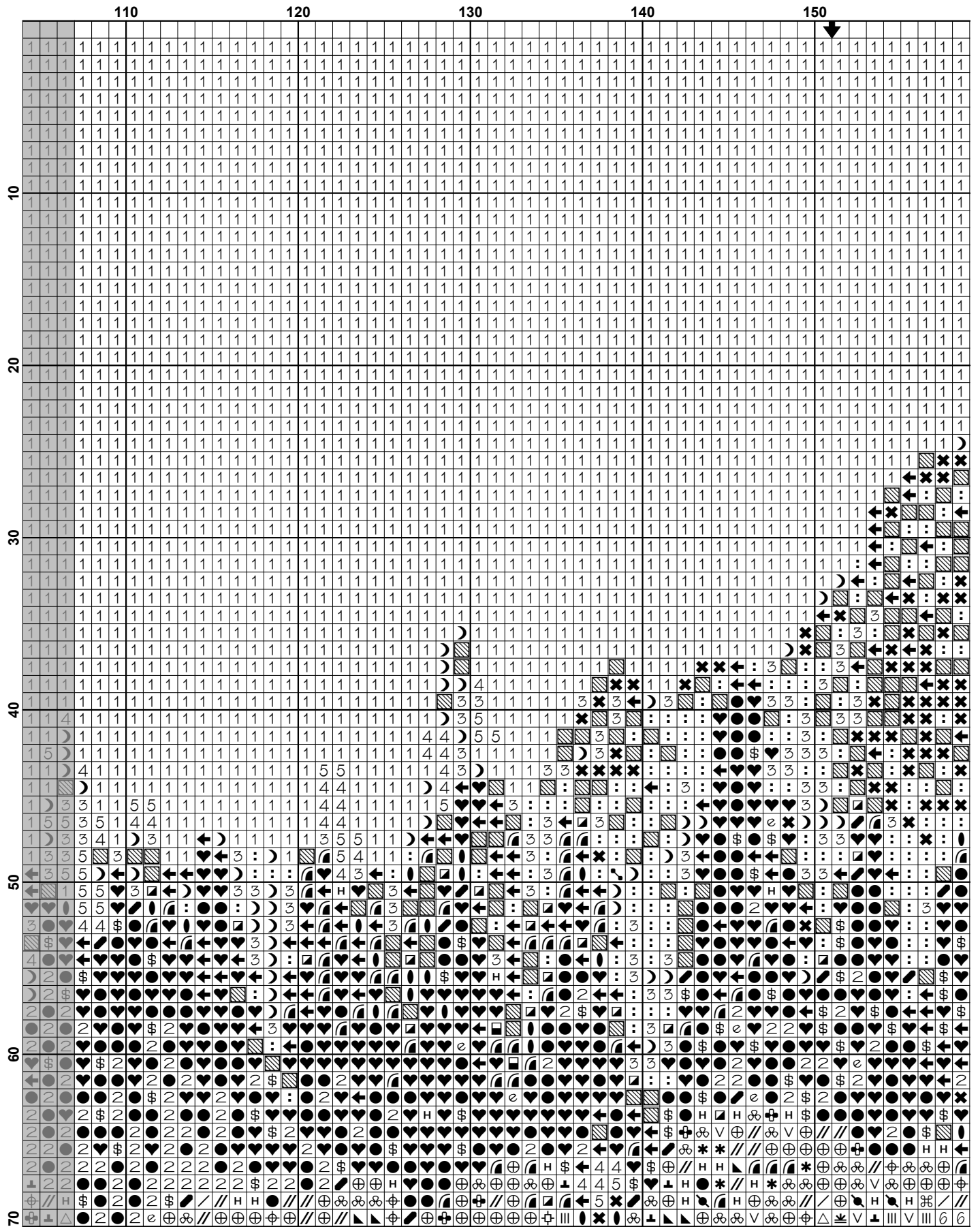
We hope you enjoy stitching our pattern.

Thanks and Best Wishes
Tereena Clarke

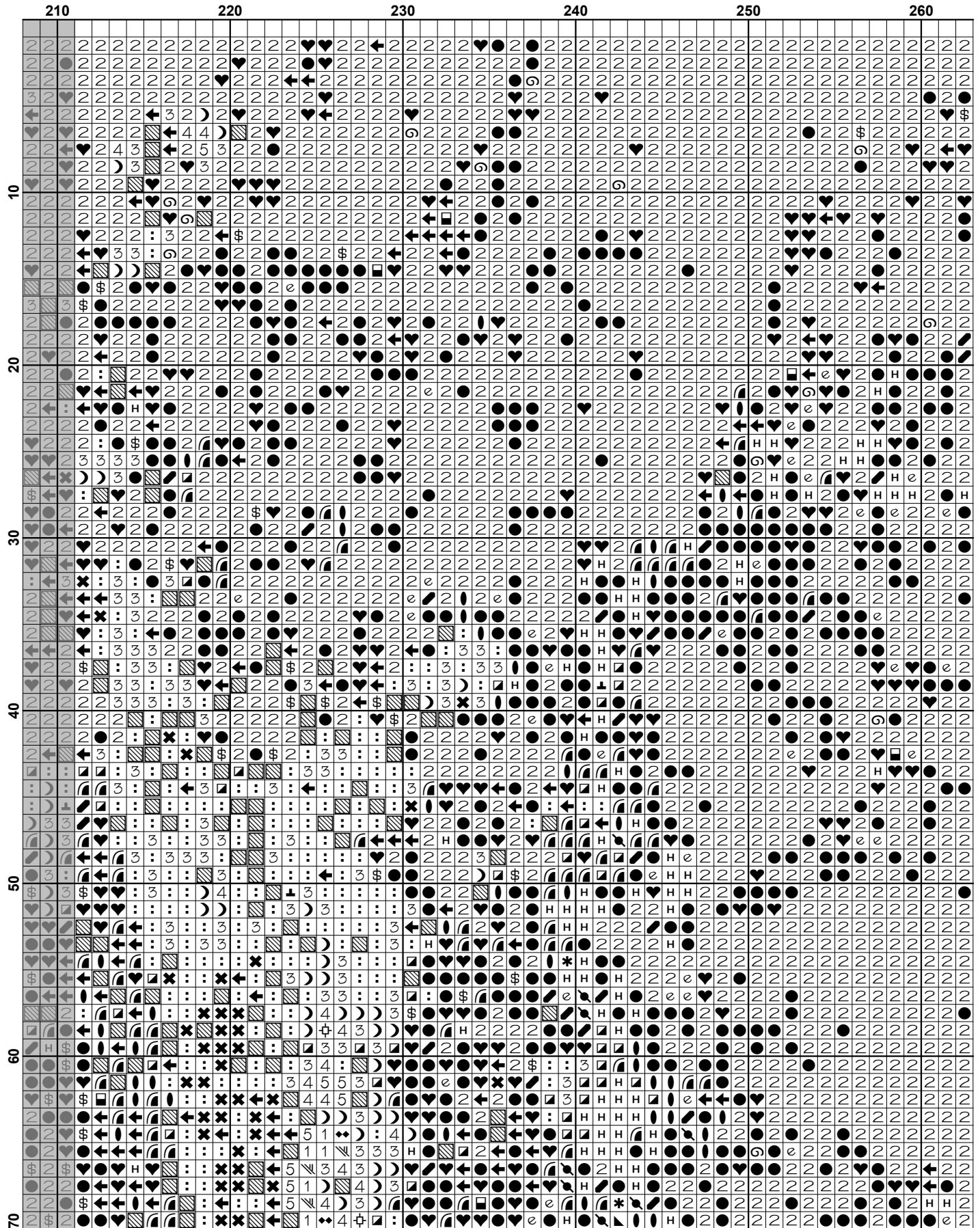
Artecy Cross Stitch
Po Box 3474
Tuggerah, NSW 2259
Australia

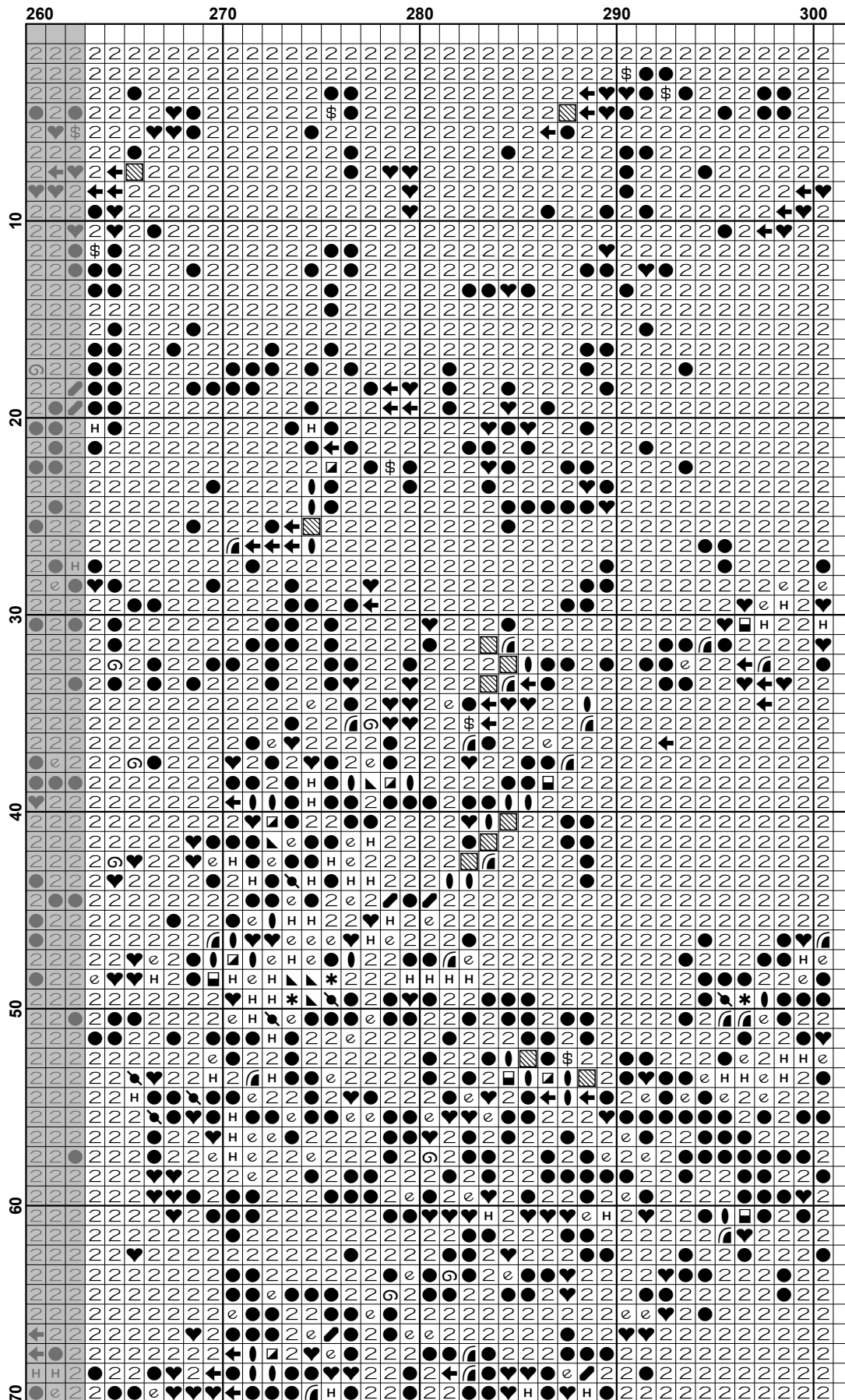
Websites: www.artecy.com and www.artecyshop.com
Email: artecy@artecy.com or stitch@artecyshop.com

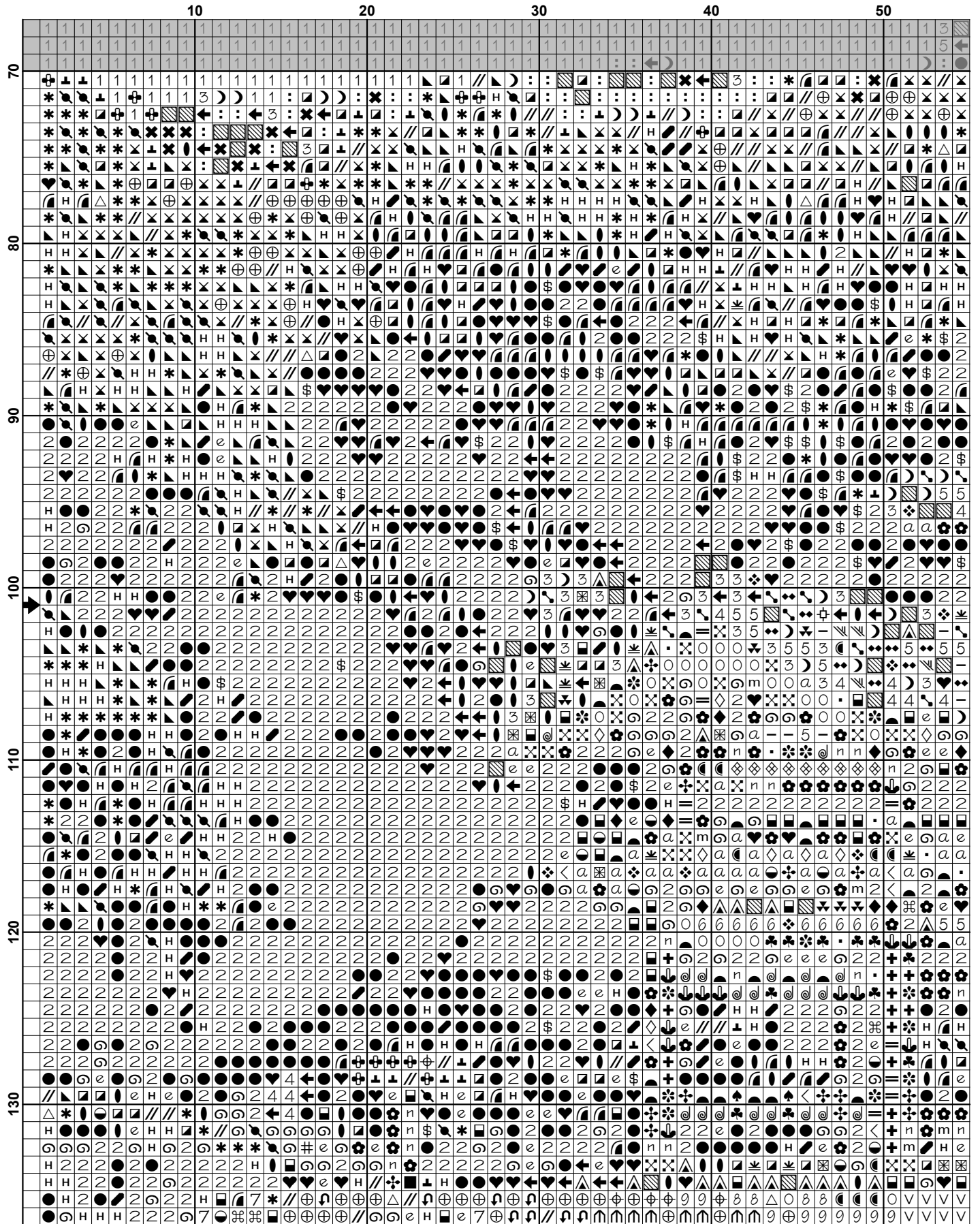
*Patterns are strictly for personal use only. It is against our copyright to make kits for sale from our designs or to sell, copy or redistribute this pattern in any form. You may not upload our patterns to any internet forums or groups or any other website. You may make 1 copy of this pattern for a working copy for your own personal use if needed.

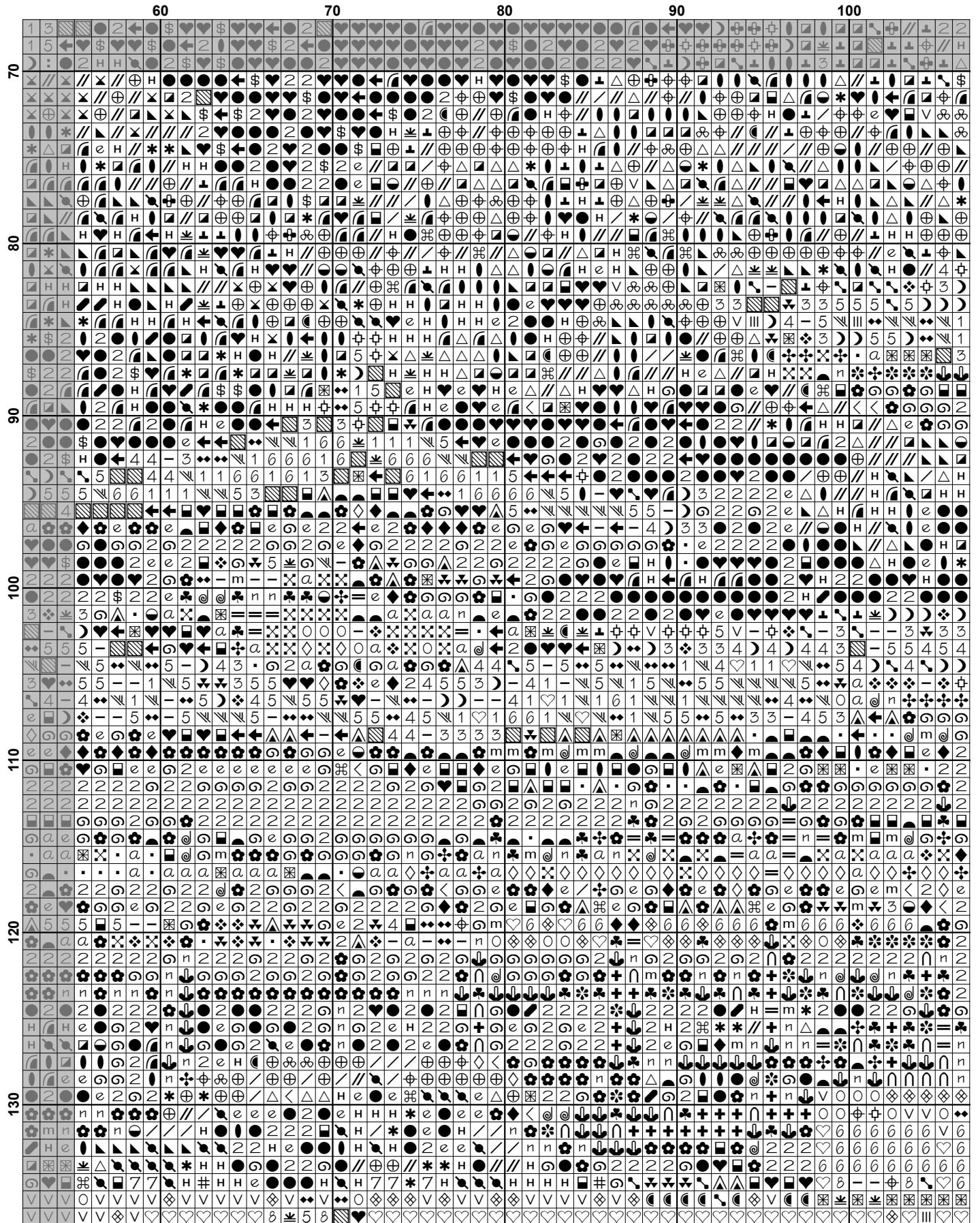


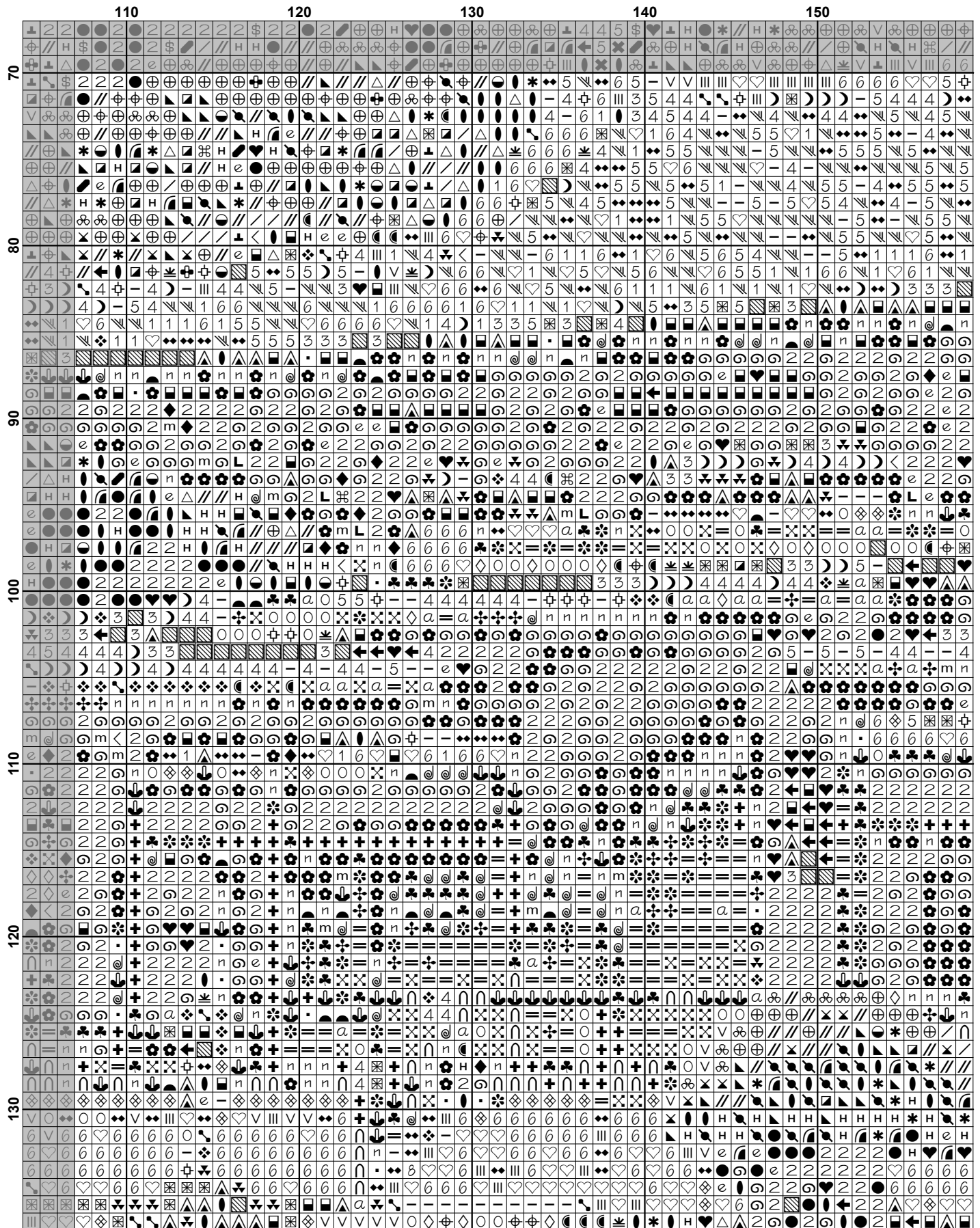
	160	170	180	190	200	210
10	1	1	1	1	1	1
11	1	1	1	1	1	1
12	1	1	1	1	1	1
13	1	1	1	1	1	1
14	1	1	1	1	1	1
15	1	1	1	1	1	1
16	1	1	1	1	1	1
17	1	1	1	1	1	1
18	1	1	1	1	1	1
19	1	1	1	1	1	1
20	1	1	1	1	1	1
21	1	1	1	1	1	1
22	1	1	1	1	1	1
23	1	1	1	1	1	1
24	1	1	1	1	1	1
25	1	1	1	1	1	1
26	1	1	1	1	1	1
27	1	1	1	1	1	1
28	1	1	1	1	1	1
29	1	1	1	1	1	1
30	1	1	1	1	1	1
31	1	1	1	1	1	1
32	1	1	1	1	1	1
33	1	1	1	1	1	1
34	1	1	1	1	1	1
35	1	1	1	1	1	1
36	1	1	1	1	1	1
37	1	1	1	1	1	1
38	1	1	1	1	1	1
39	1	1	1	1	1	1
40	1	1	1	1	1	1
41	1	1	1	1	1	1
42	1	1	1	1	1	1
43	1	1	1	1	1	1
44	1	1	1	1	1	1
45	1	1	1	1	1	1
46	1	1	1	1	1	1
47	1	1	1	1	1	1
48	1	1	1	1	1	1
49	1	1	1	1	1	1
50	1	1	1	1	1	1
51	1	1	1	1	1	1
52	1	1	1	1	1	1
53	1	1	1	1	1	1
54	1	1	1	1	1	1
55	1	1	1	1	1	1
56	1	1	1	1	1	1
57	1	1	1	1	1	1
58	1	1	1	1	1	1
59	1	1	1	1	1	1
60	1	1	1	1	1	1
61	1	1	1	1	1	1
62	1	1	1	1	1	1
63	1	1	1	1	1	1
64	1	1	1	1	1	1
65	1	1	1	1	1	1
66	1	1	1	1	1	1
67	1	1	1	1	1	1
68	1	1	1	1	1	1
69	1	1	1	1	1	1
70	1	1	1	1	1	1

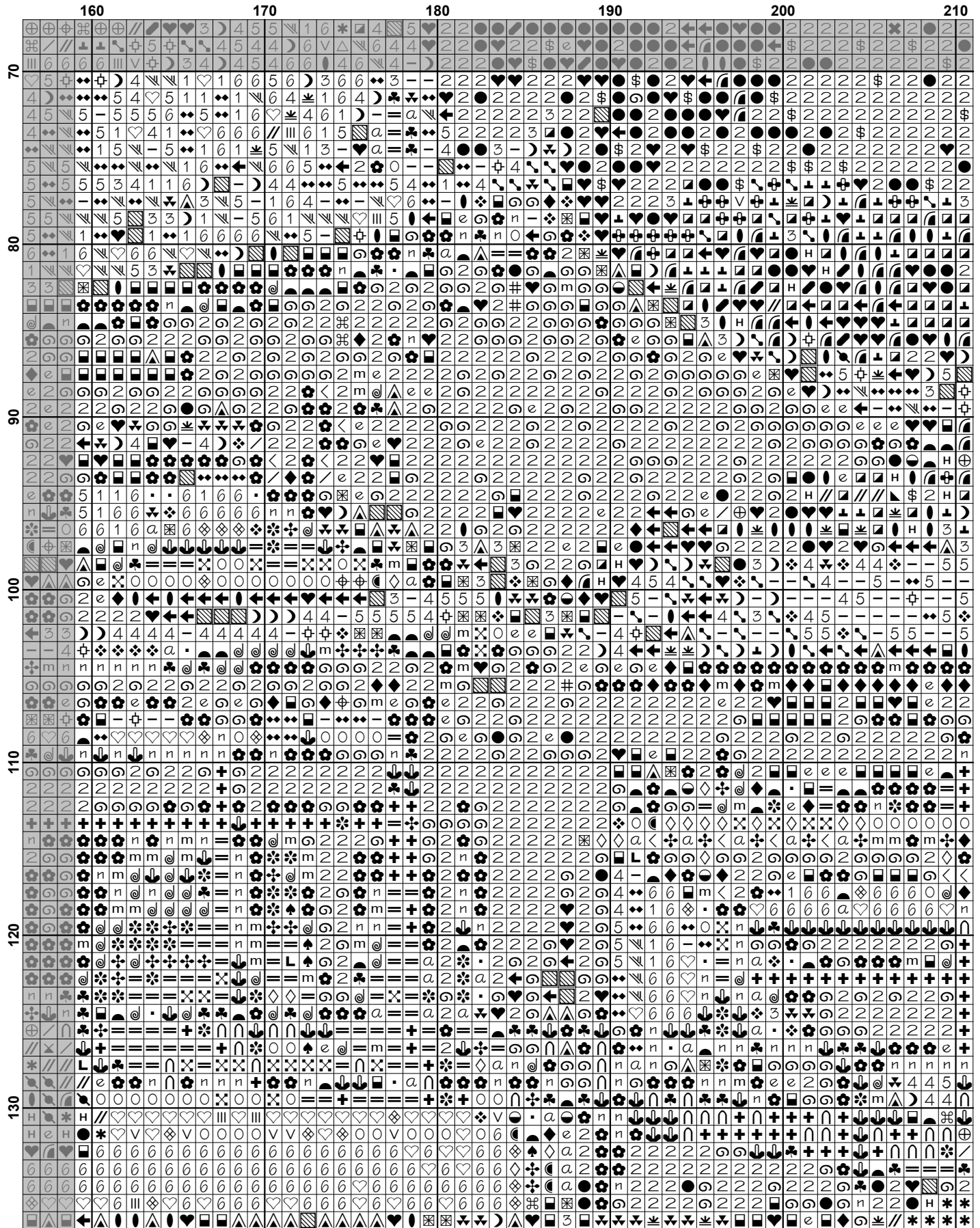


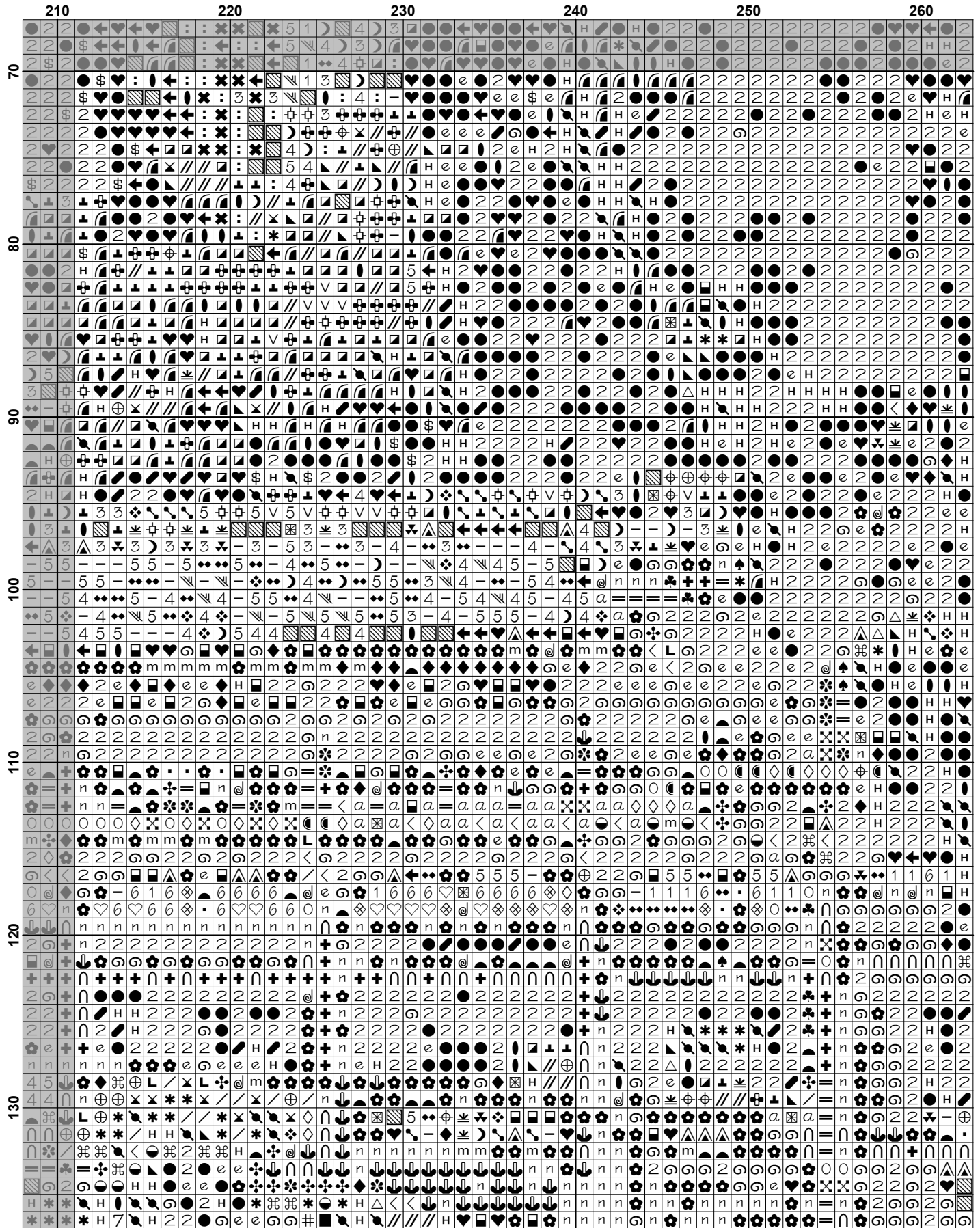


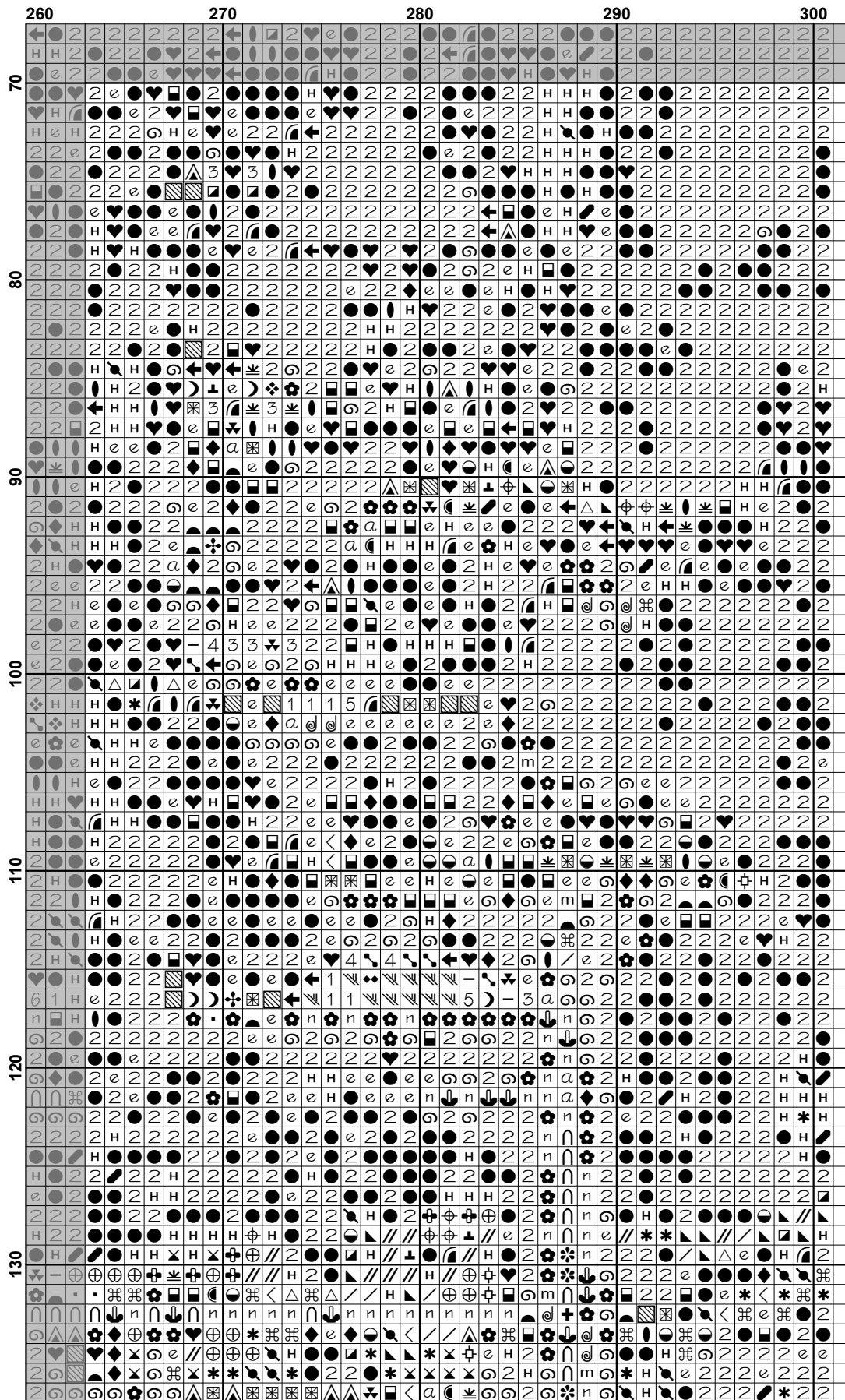


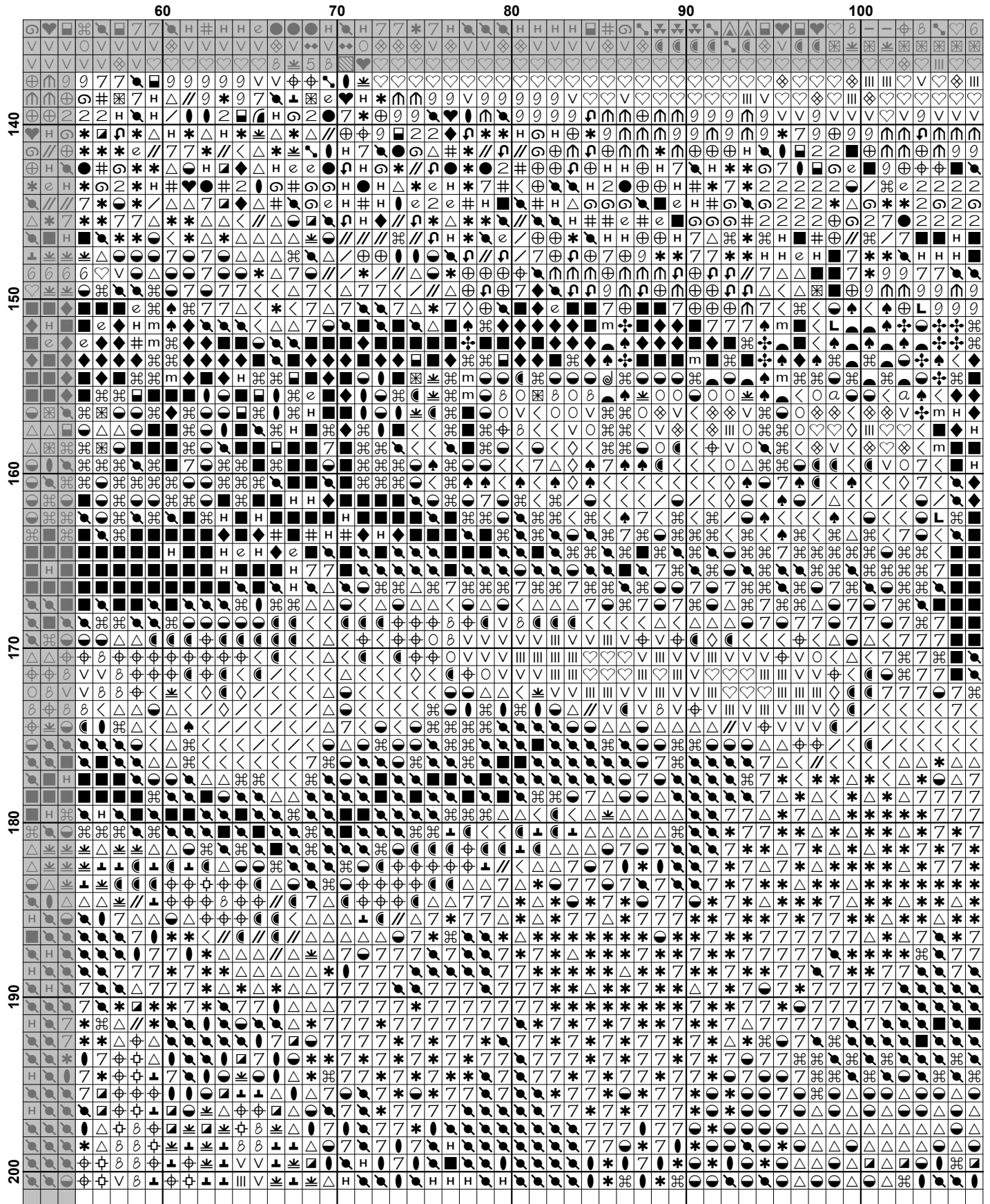


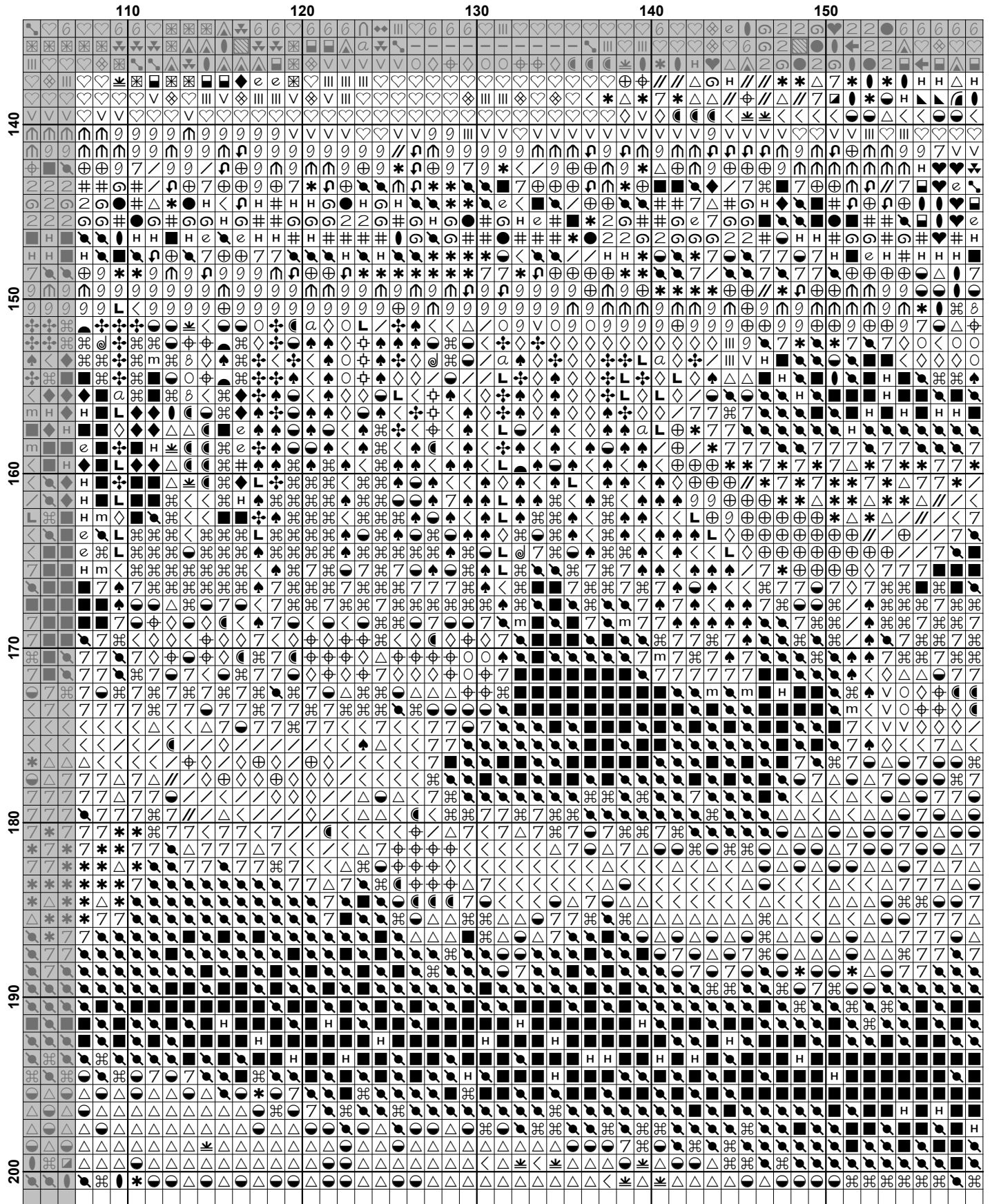


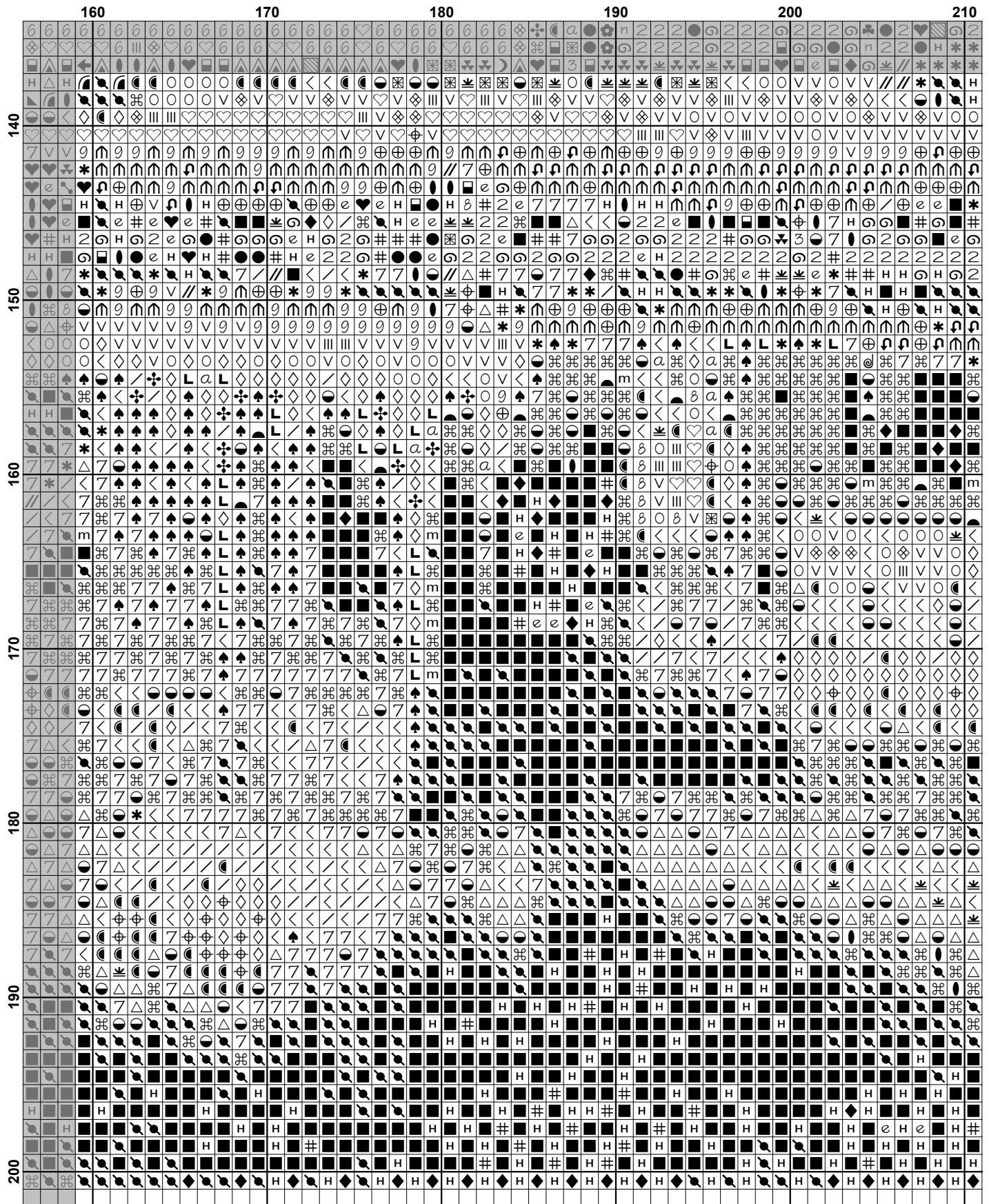


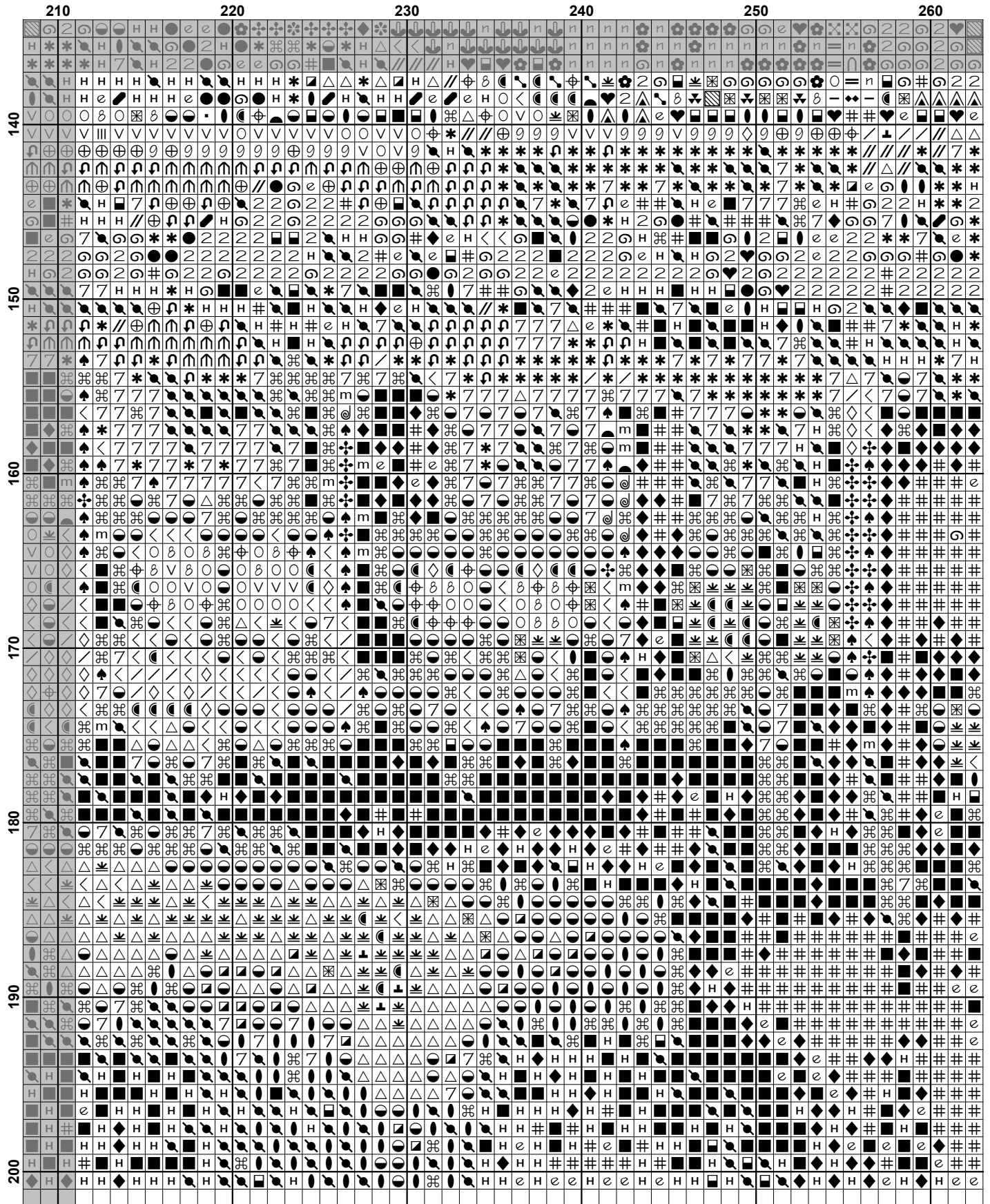


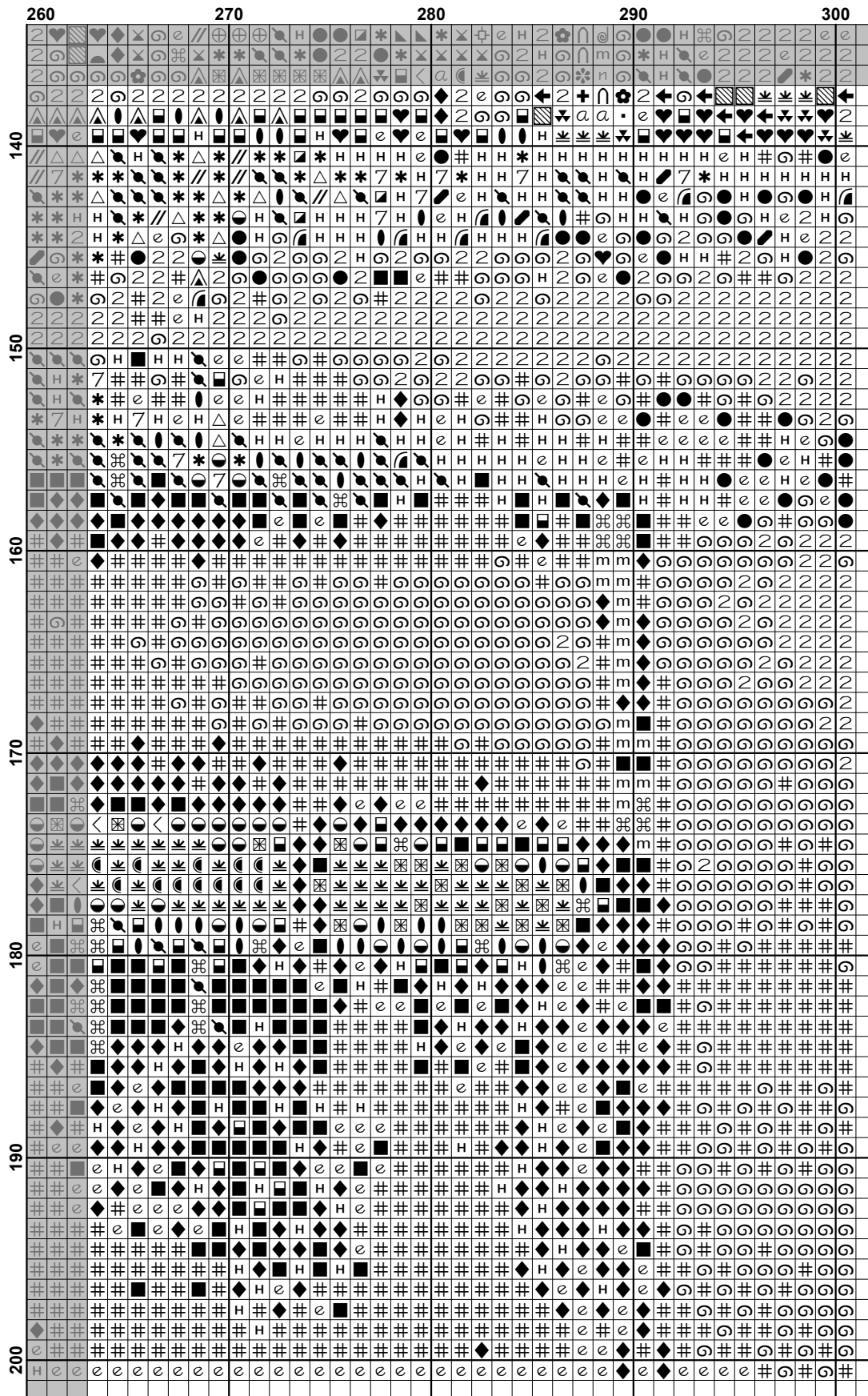









































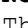




Pattern Name: Byodo-In Temple
Designed By: Image by Christian Joudrey - Unsplash
Company: Artecy Cross Stitch
Copyright: Copyright Artecy Cross Stitch. All rights Reserved.
Fabric: Aida 14, White
 300w X 200h Stitches
Size(s): 14 Count, 21-3/8w X 14-1/4h in
 16 Count, 18-3/4w X 12-1/2h in
 18 Count, 16-5/8w X 11h in

Floss Used for Full Stitches:

Symbol	Strands	Type	Number	Color
	2	DMC	164	Forest Green-LT
	2	DMC	165	Moss Green-VY LT
	2	DMC	166	Moss Green-MD LT
	2	DMC	169	Pewter-LT
	2	DMC	307	Lemon
	2	DMC	310	Black
	2	DMC	315	Antique Mauve-VY DK
	2	DMC	317	Pewter Gray
	2	DMC	318	Steel Gray-LT
	2	DMC	326	Rose-VY DK
	2	DMC	347	Salmon-VY DK
	2	DMC	349	Coral-DK
	2	DMC	355	Terra Cotta-DK
	2	DMC	370	Mustard-MD
	2	DMC	372	Mustard-LT
	2	DMC	413	Pewter Gray-DK
	2	DMC	414	Steel Gray-DK
	2	DMC	415	Pearl Gray
	2	DMC	436	Tan
	2	DMC	470	Avocado Green-LT
	2	DMC	471	Avocado Green-VY LT
	2	DMC	498	Christmas Red-DK
	2	DMC	500	Blue Green-VY DK
	2	DMC	520	Fern Green-DK
	2	DMC	524	Fern Green-VY LT
	2	DMC	581	Moss Green
	2	DMC	612	Drab Brown-LT
	2	DMC	640	Beige Gray-VY DK
	2	DMC	647	Beaver Gray-MD
	2	DMC	677	Old Gold-VY LT
	2	DMC	726	Topaz-LT
	2	DMC	730	Olive Green-VY DK
	2	DMC	732	Olive Green
	2	DMC	758	Terra Cotta-VY LT
	2	DMC	775	Baby Blue-VY LT
	2	DMC	779	Cocoa-DK
	2	DMC	783	Topaz-MD
	2	DMC	801	Coffee Brown-DK
	2	DMC	814	Garnet-DK
	2	DMC	822	Beige Gray-LT
	2	DMC	829	Golden Olive-VY DK
	2	DMC	833	Golden Olive-LT
	2	DMC	869	Hazelnut Brown-VY DK
	2	DMC	895	Hunter Green-VY DK
	2	DMC	907	Parrot Green-LT

Symbol	Strands	Type	Number	Color
 m	2	DMC	918	Red Copper-DK
 x	2	DMC	930	Antique Blue-DK
 ●	2	DMC	934	Black Avocado Green
 H	2	DMC	936	Avocado Green-VY DK
 #	2	DMC	938	Coffee Brown-UL DK
 ✕	2	DMC	961	Dusty Rose-DK
 △	2	DMC	3012	Khaki Green-MD
 β	2	DMC	3023	Brown Gray-LT
 e	2	DMC	3031	Mocha Brown-VY DK
 v	2	DMC	3041	Antique Violet-MD
 -	2	DMC	3042	Antique Violet-LT
 ▣	2	DMC	3363	Pine Green-MD
 ⊥	2	DMC	3364	Pine Green
 ⊙	2	DMC	3371	Black Brown
 =	2	DMC	3705	Melon-DK
 ◇	2	DMC	3713	Salmon-VY LT
 a	2	DMC	3722	Shell Pink-MD
 ▲	2	DMC	3740	Antique Violet-DK
 ◆	2	DMC	3743	Antique Violet-VY LT
 ≡	2	DMC	3747	Blue Violet-VY LT
 :	2	DMC	3768	Gray Green-DK
 ♥	2	DMC	3770	Tawny-VY LT
 ○	2	DMC	3787	Brown Gray-DK
 ♥	2	DMC	3799	Pewter Gray-VY DK
 +	2	DMC	3801	Christmas Red-LT
 ⊕	2	DMC	3819	Moss Green-LT
 ♠	2	DMC	3826	Golden Brown
 ⋄	2	DMC	3830	Terra Cotta-MD
 ♣	2	DMC	3831	Raspberry-DK
 ◐	2	DMC	3858	Rosewood-MD
 ⊠	2	DMC	3860	Cocoa
 ⋄	2	DMC	3861	Cocoa-LT
 ⊙	2	DMC	3862	Mocha Beige-DK
 6	2	DMC	B5200	Snow White

Notes:

The middle of this pattern can be found on page 9 and is 151 stitches across and 101 stitches down.

Pattern layout using page numbers in top left.

1 2 3 4 5 6
 7 8 9 10 11 12
 13 14 15 16 17 18

Usage Summary

Strands Per Skein: 6

Skein Length: 313.0 in

Type	Number	Full	Half	Quarter	Petite	Back(in)	Str(in)	Spec(in)	French	Bead	Skein Est.
DMC 164	164	121	0	0	0	0.0	0.0	0.0	0	0	1.000
DMC 165	165	271	0	0	0	0.0	0.0	0.0	0	0	1.000
DMC 166	166	174	0	0	0	0.0	0.0	0.0	0	0	1.000
DMC 169	169	422	0	0	0	0.0	0.0	0.0	0	0	1.000
DMC 307	307	266	0	0	0	0.0	0.0	0.0	0	0	1.000
DMC 310	310	8508	0	0	0	0.0	0.0	0.0	0	0	5.000
DMC 315	315	77	0	0	0	0.0	0.0	0.0	0	0	1.000
DMC 317	317	882	0	0	0	0.0	0.0	0.0	0	0	1.000
DMC 318	318	377	0	0	0	0.0	0.0	0.0	0	0	1.000
DMC 326	326	245	0	0	0	0.0	0.0	0.0	0	0	1.000
DMC 347	347	144	0	0	0	0.0	0.0	0.0	0	0	1.000
DMC 349	349	144	0	0	0	0.0	0.0	0.0	0	0	1.000
DMC 355	355	187	0	0	0	0.0	0.0	0.0	0	0	1.000
DMC 370	370	791	0	0	0	0.0	0.0	0.0	0	0	1.000
DMC 372	372	334	0	0	0	0.0	0.0	0.0	0	0	1.000
DMC 413	413	902	0	0	0	0.0	0.0	0.0	0	0	1.000
DMC 414	414	653	0	0	0	0.0	0.0	0.0	0	0	1.000
DMC 415	415	442	0	0	0	0.0	0.0	0.0	0	0	1.000
DMC 436	436	350	0	0	0	0.0	0.0	0.0	0	0	1.000
DMC 470	470	264	0	0	0	0.0	0.0	0.0	0	0	1.000
DMC 471	471	421	0	0	0	0.0	0.0	0.0	0	0	1.000
DMC 498	498	428	0	0	0	0.0	0.0	0.0	0	0	1.000
DMC 500	500	285	0	0	0	0.0	0.0	0.0	0	0	1.000
DMC 520	520	724	0	0	0	0.0	0.0	0.0	0	0	1.000
DMC 524	524	107	0	0	0	0.0	0.0	0.0	0	0	1.000
DMC 581	581	861	0	0	0	0.0	0.0	0.0	0	0	1.000
DMC 612	612	311	0	0	0	0.0	0.0	0.0	0	0	1.000
DMC 640	640	325	0	0	0	0.0	0.0	0.0	0	0	1.000
DMC 647	647	117	0	0	0	0.0	0.0	0.0	0	0	1.000
DMC 677	677	351	0	0	0	0.0	0.0	0.0	0	0	1.000
DMC 726	726	59	0	0	0	0.0	0.0	0.0	0	0	1.000
DMC 730	730	2411	0	0	0	0.0	0.0	0.0	0	0	2.000
DMC 732	732	1079	0	0	0	0.0	0.0	0.0	0	0	1.000
DMC 758	758	301	0	0	0	0.0	0.0	0.0	0	0	1.000
DMC 775	775	8707	0	0	0	0.0	0.0	0.0	0	0	5.000
DMC 779	779	571	0	0	0	0.0	0.0	0.0	0	0	1.000
DMC 783	783	69	0	0	0	0.0	0.0	0.0	0	0	1.000
DMC 801	801	725	0	0	0	0.0	0.0	0.0	0	0	1.000
DMC 814	814	1010	0	0	0	0.0	0.0	0.0	0	0	1.000
DMC 822	822	145	0	0	0	0.0	0.0	0.0	0	0	1.000
DMC 829	829	1947	0	0	0	0.0	0.0	0.0	0	0	2.000
DMC 833	833	272	0	0	0	0.0	0.0	0.0	0	0	1.000
DMC 869	869	1317	0	0	0	0.0	0.0	0.0	0	0	1.000
DMC 895	895	219	0	0	0	0.0	0.0	0.0	0	0	1.000
DMC 907	907	182	0	0	0	0.0	0.0	0.0	0	0	1.000
DMC 918	918	164	0	0	0	0.0	0.0	0.0	0	0	1.000
DMC 930	930	307	0	0	0	0.0	0.0	0.0	0	0	1.000
DMC 934	934	3211	0	0	0	0.0	0.0	0.0	0	0	2.000
DMC 936	936	2158	0	0	0	0.0	0.0	0.0	0	0	2.000
DMC 938	938	1225	0	0	0	0.0	0.0	0.0	0	0	1.000
DMC 961	961	171	0	0	0	0.0	0.0	0.0	0	0	1.000

Type	Number	Full	Half	Quarter	Petite	Back(in)	Str(in)	Spec(in)	French	Bead	Skein Est.
DMC	3012	940	0	0	0	0.0	0.0	0.0	0	0	1.000
DMC	3023	99	0	0	0	0.0	0.0	0.0	0	0	1.000
DMC	3031	1186	0	0	0	0.0	0.0	0.0	0	0	1.000
DMC	3041	120	0	0	0	0.0	0.0	0.0	0	0	1.000
DMC	3042	241	0	0	0	0.0	0.0	0.0	0	0	1.000
DMC	3363	575	0	0	0	0.0	0.0	0.0	0	0	1.000
DMC	3364	237	0	0	0	0.0	0.0	0.0	0	0	1.000
DMC	3371	1968	0	0	0	0.0	0.0	0.0	0	0	2.000
DMC	3705	265	0	0	0	0.0	0.0	0.0	0	0	1.000
DMC	3713	147	0	0	0	0.0	0.0	0.0	0	0	1.000
DMC	3722	183	0	0	0	0.0	0.0	0.0	0	0	1.000
DMC	3740	176	0	0	0	0.0	0.0	0.0	0	0	1.000
DMC	3743	235	0	0	0	0.0	0.0	0.0	0	0	1.000
DMC	3747	230	0	0	0	0.0	0.0	0.0	0	0	1.000
DMC	3768	766	0	0	0	0.0	0.0	0.0	0	0	1.000
DMC	3770	443	0	0	0	0.0	0.0	0.0	0	0	1.000
DMC	3787	870	0	0	0	0.0	0.0	0.0	0	0	1.000
DMC	3799	1739	0	0	0	0.0	0.0	0.0	0	0	1.000
DMC	3801	236	0	0	0	0.0	0.0	0.0	0	0	1.000
DMC	3819	585	0	0	0	0.0	0.0	0.0	0	0	1.000
DMC	3826	360	0	0	0	0.0	0.0	0.0	0	0	1.000
DMC	3830	205	0	0	0	0.0	0.0	0.0	0	0	1.000
DMC	3831	157	0	0	0	0.0	0.0	0.0	0	0	1.000
DMC	3858	226	0	0	0	0.0	0.0	0.0	0	0	1.000
DMC	3860	198	0	0	0	0.0	0.0	0.0	0	0	1.000
DMC	3861	97	0	0	0	0.0	0.0	0.0	0	0	1.000
DMC	3862	1158	0	0	0	0.0	0.0	0.0	0	0	1.000
DMC	B5200	624	0	0	0	0.0	0.0	0.0	0	0	1.000