

Artecy

CROSS STITCH

American Eskimo Dog 3



* Original image© Ben Lunsford Wikimedia
Cross Stitch Design by Tereena Clarke.

Completed Size = 164w x 200h Stitches

14 Count, 12w x 14.5h inches (30cm x 37cm)

16 Count, 10.5w x 12.5h inches (27cm x 32cm)

18 Count, 9.5w x 11.5h inches (24cm x 29cm)

Uses 42 DMC cotton colours. Only full cross stitches are used in this pattern.

Pattern Instructions

* This pattern can be worked on any fabric type, colour or count you prefer. To work out the size of the finished article, take the number of stitches wide and high and divide it by the count of your fabric (e.g. 14,16,18 count aida etc) to get the size in inches. Times it by 2.54 to get centimetres. We have the sizes in inches shown on the previous page. Also leave at least a few inches of fabric around each side of the design to assist in framing. The higher the fabric count the smaller the completed project will be.

* To put the pattern together look in the top and bottom corners. The page numbers in brackets show which page number it joins up to. Page 1 always starts at the top left hand side of the pattern. Our pages also have a shaded grey section. This indicates a 3 row overlap from adjoining pages to assist with reading the pattern. PLEASE DO NOT RESTITCH THIS AREA.

* You should begin at the centre of the pattern. To find the centre of the pattern it is just a matter of laying the pattern out and locating the arrows at the top and left hand side of the patterns, they are determined by dividing the stitch numbers wide and high in half. Where the two points meet in the middle, that is the centre.

* If you need more assistance to find the middle of your pattern or the page layout, please see the notes section on the colour symbol chart. The easiest way to stitch this pattern, as it has multiple pages, is to stitch one page at a time.

* We suggest using two strands of floss for each stitch and one strand for backstitching if the pattern calls for it.

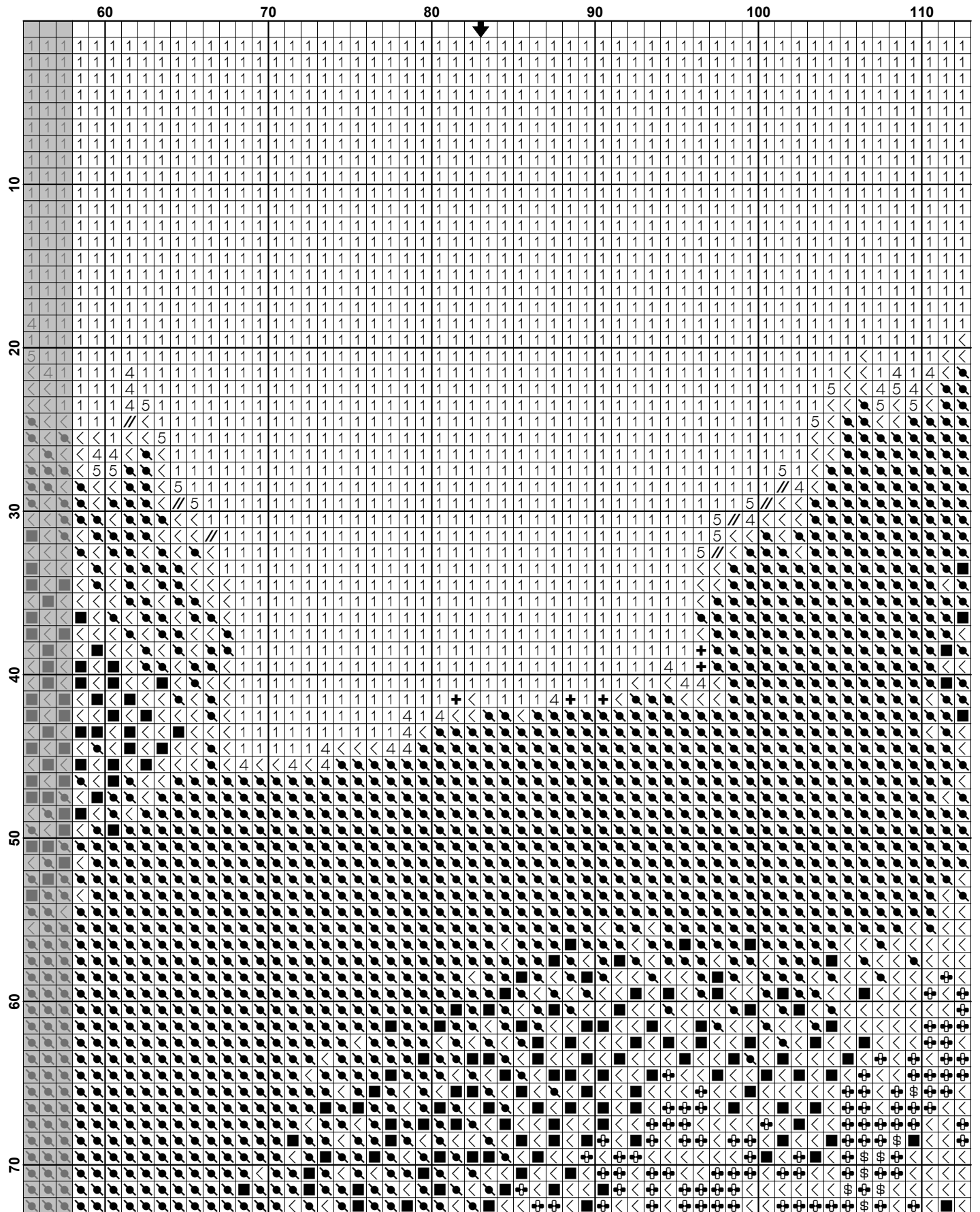
We hope you enjoy stitching our pattern.

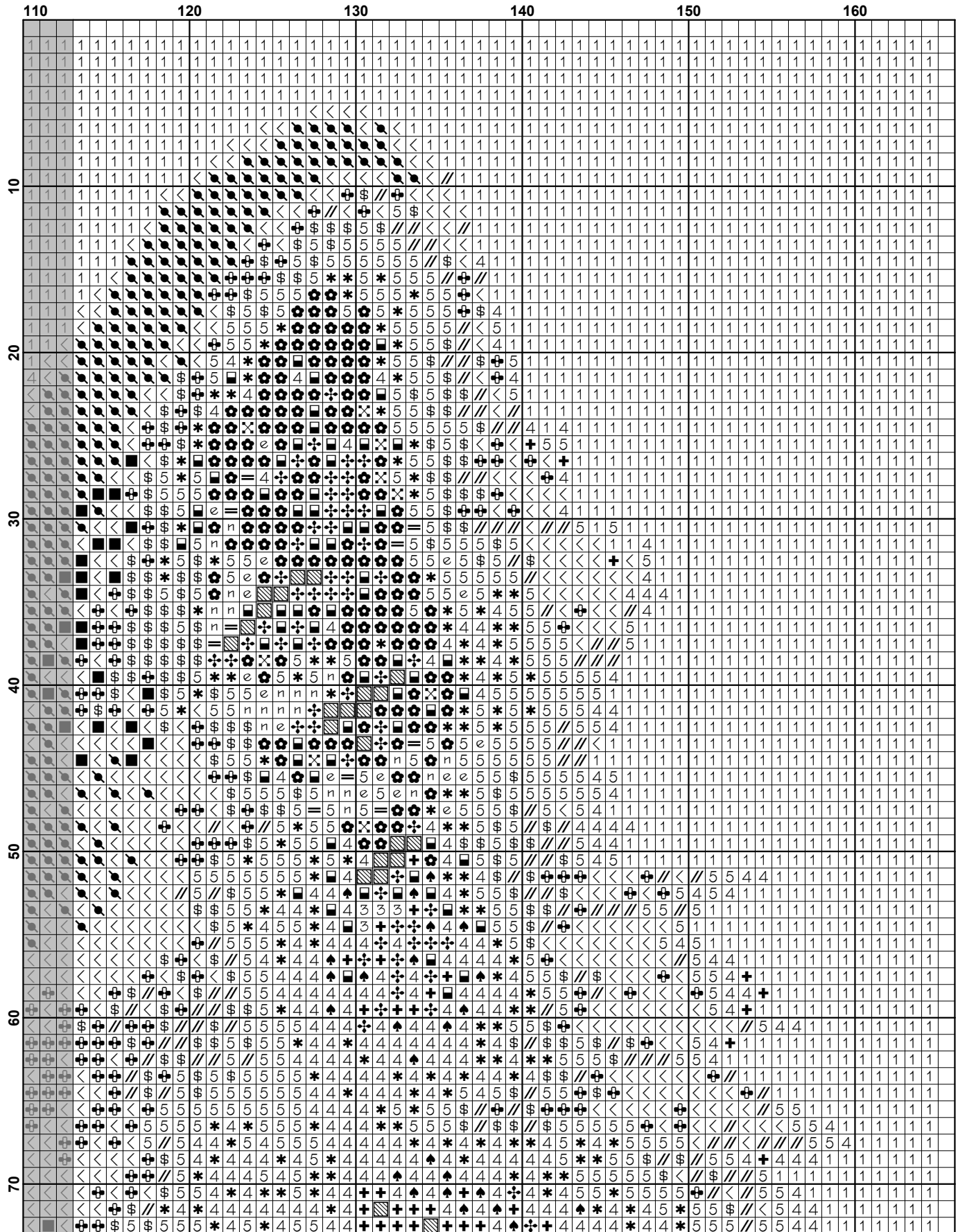
Thanks and Best Wishes
Tereena Clarke

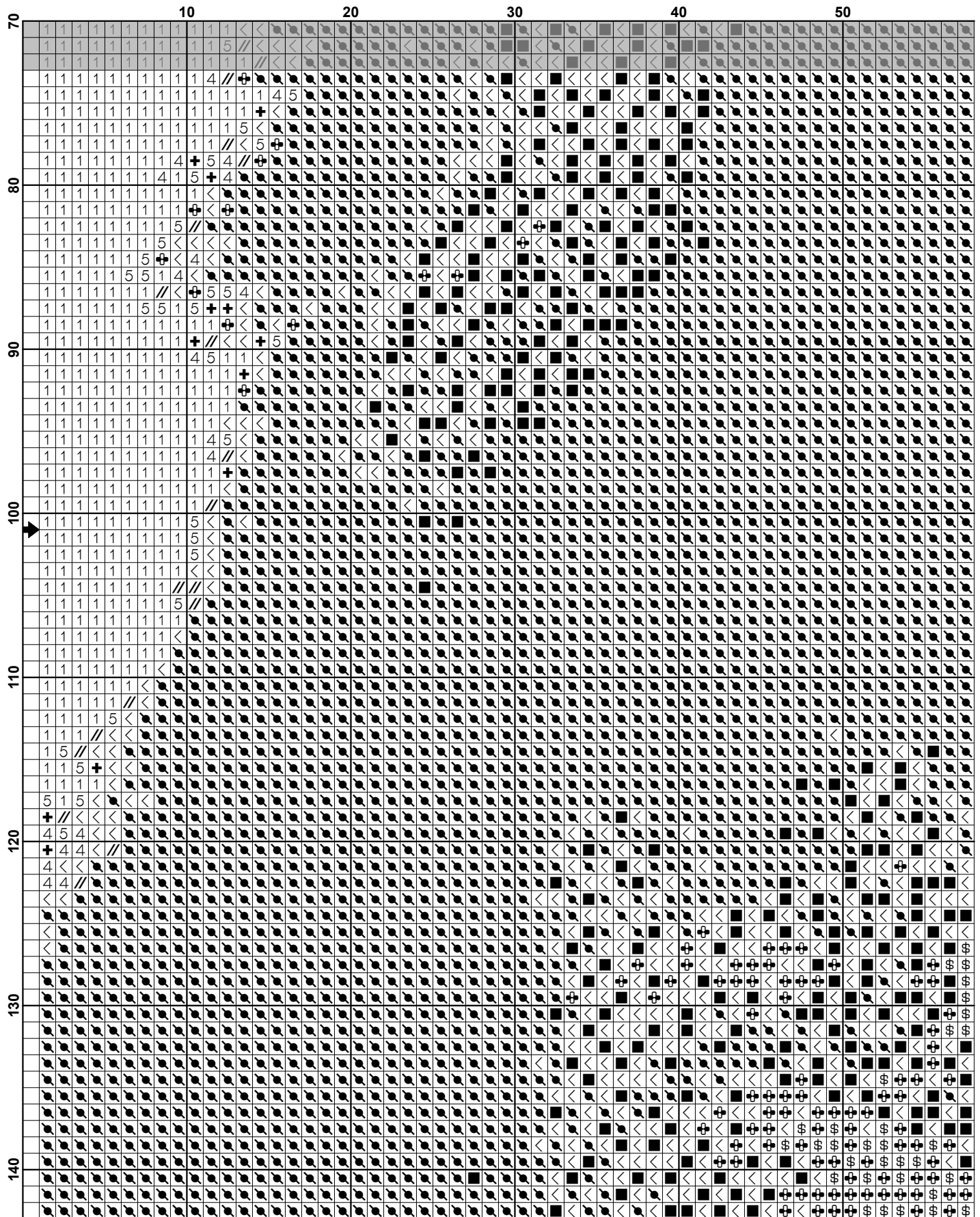
Artecy Cross Stitch
Po Box 3474
Tuggerah, NSW 2259
Australia

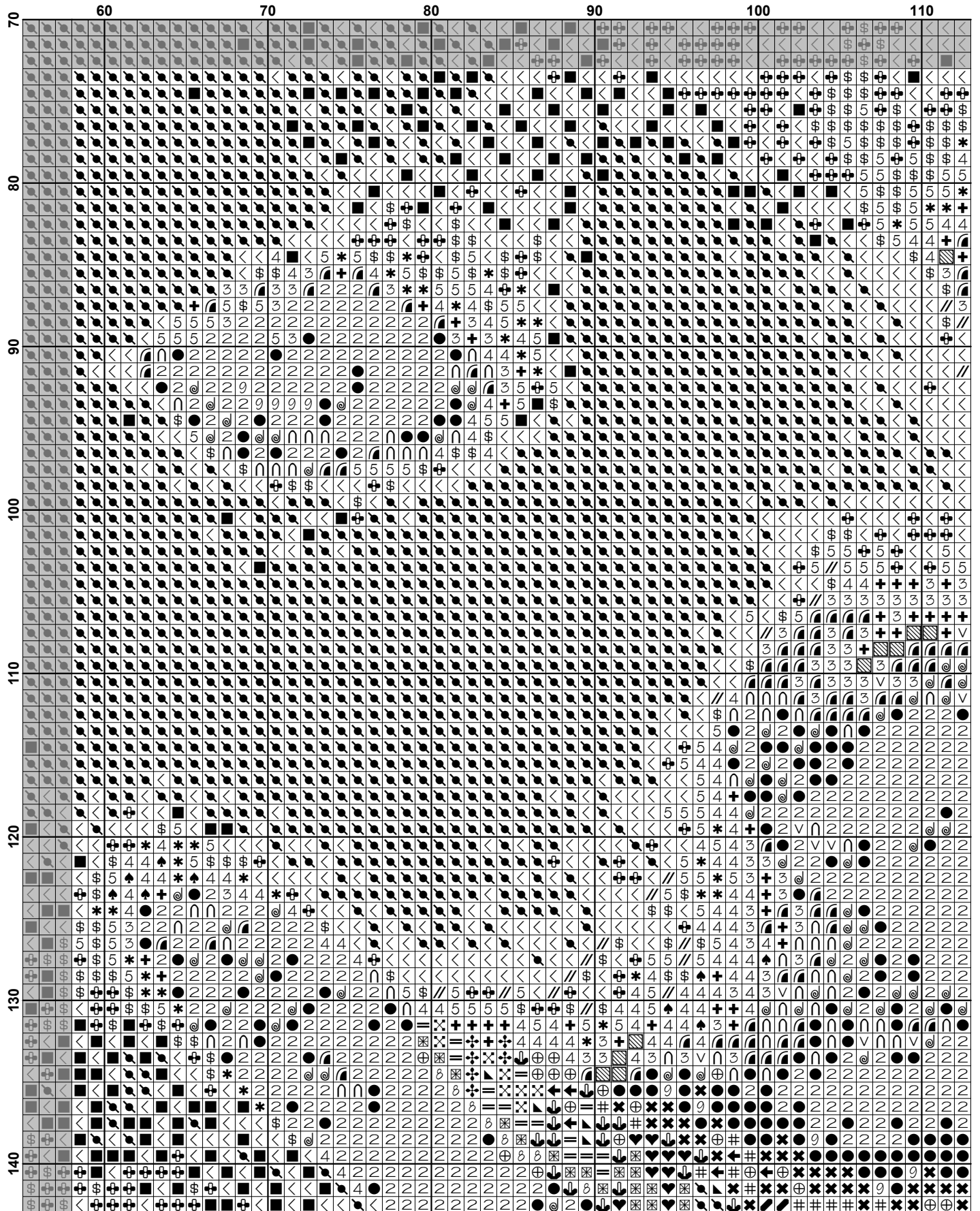
Websites: www.artecy.com and www.artecyshop.com
Email: artecy@artecy.com or stitch@artecyshop.com

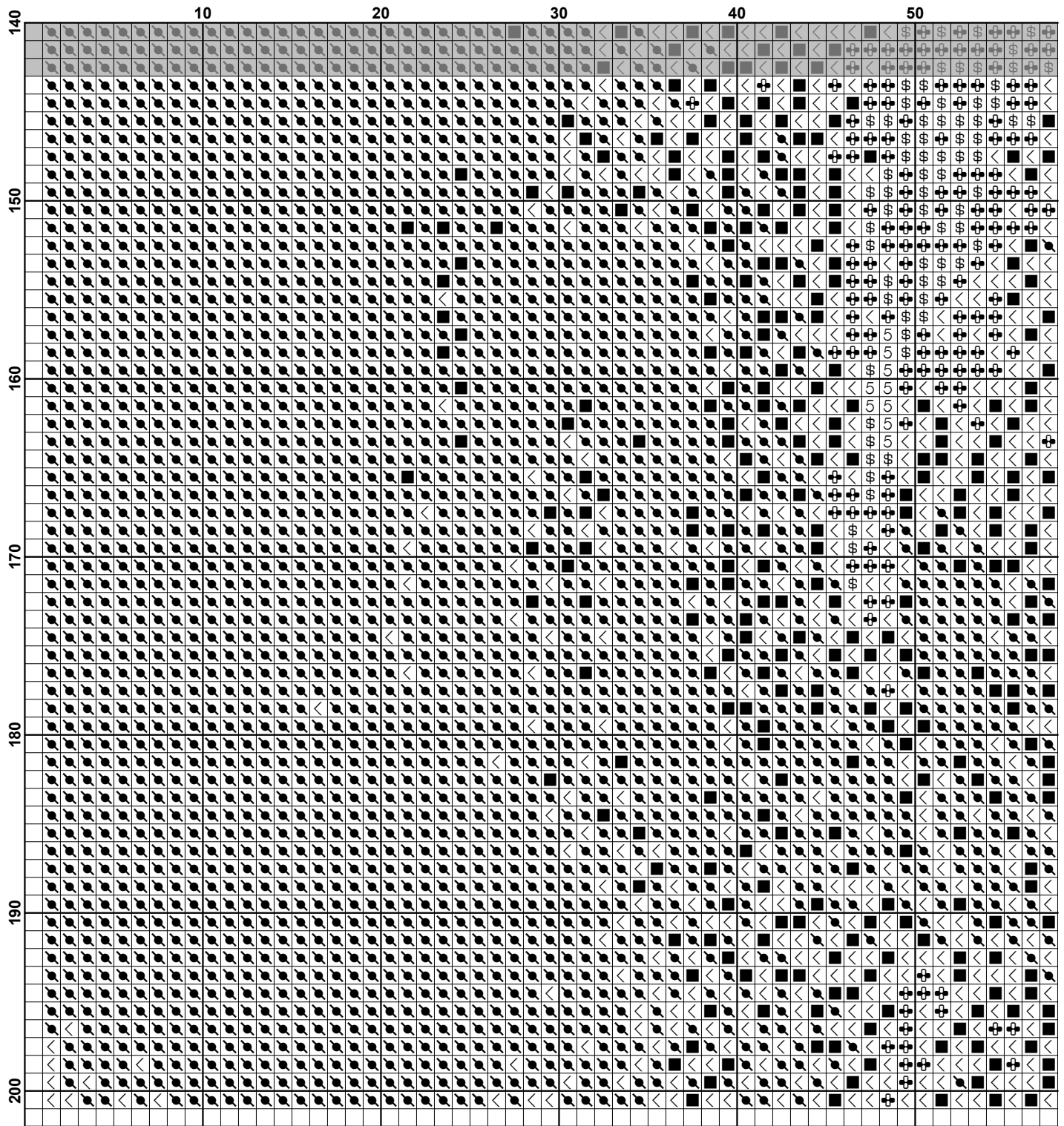
*Patterns are strictly for personal use only. It is against our copyright to make kits for sale from our designs or to sell, copy or redistribute this pattern in any form. You may not upload our patterns to any internet forums or groups or any other website. You may make 1 copy of this pattern for a working copy for your own personal use if needed.

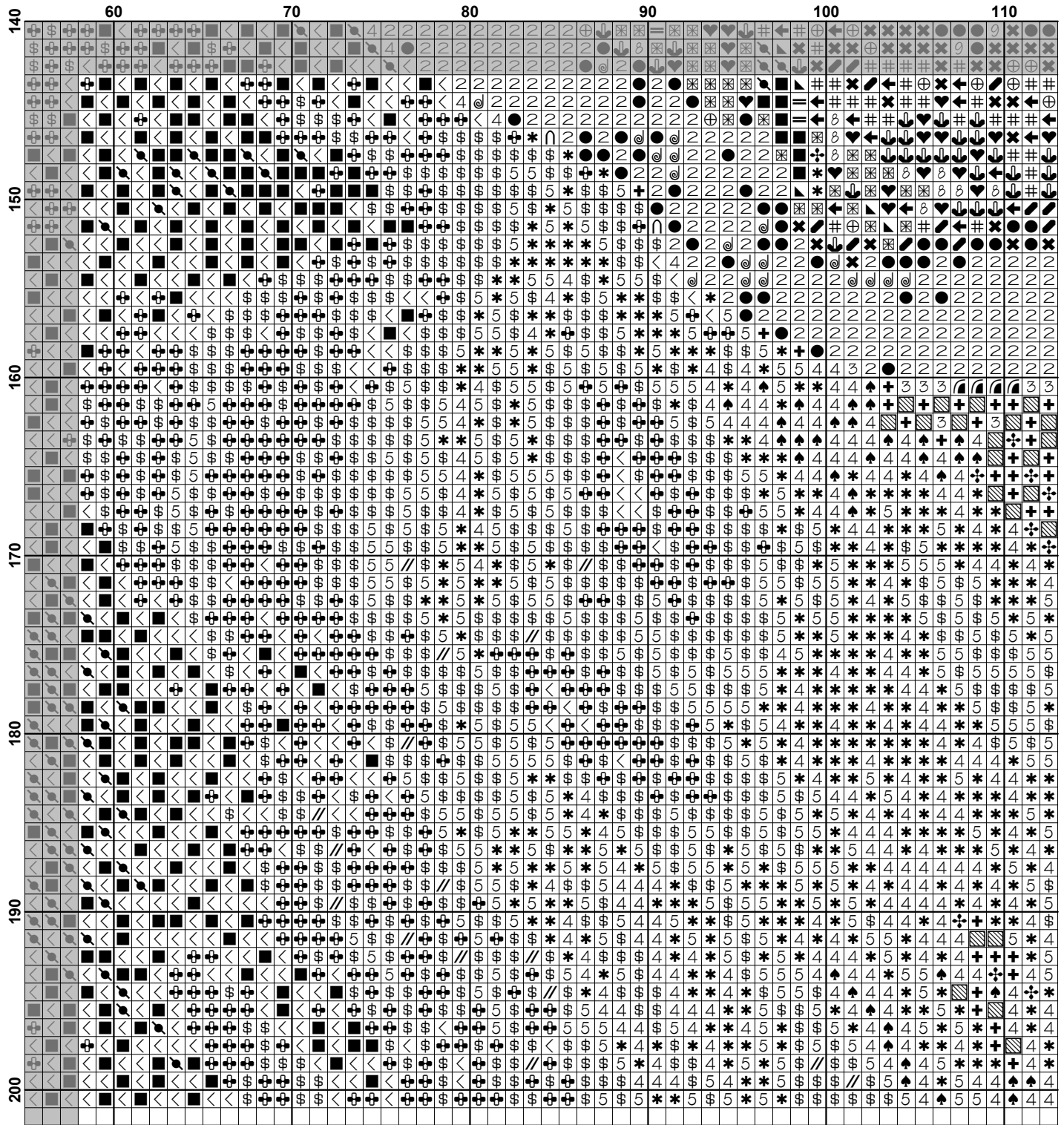


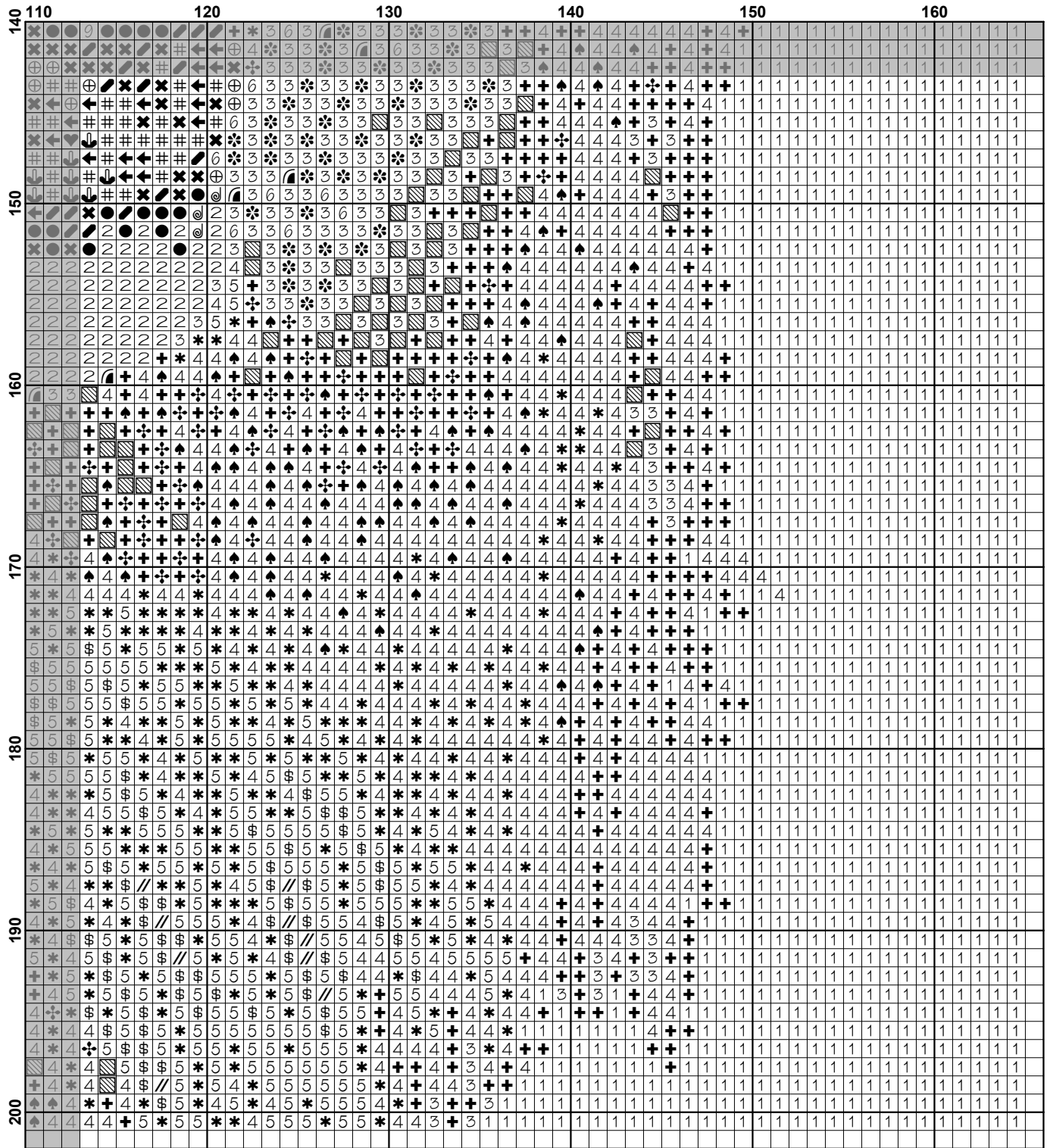












Pattern Name: American Eskimo Dog 3
Designed By: Artwork by by Ben Lunsford Wikimedia
Company: Artecy Cross Stitch
Copyright: Copyright Artecy Cross Stitch. All rights Reserved.
Fabric: Aida 14, White
 164w X 200h Stitches
Size(s): 14 Count, 11-5/8w X 14-1/4h in
 16 Count, 10-1/4w X 12-1/2h in
 18 Count, 9w X 11h in

Floss Used for Full Stitches:

Symbol	Strands	Type	Number	Color
	+	2	DMC 169	Pewter-LT
	2	2	DMC 310	Black
	←	2	DMC 315	Antique Mauve-VY DK
	⊗	2	DMC 316	Antique Mauve-MD
	↶	2	DMC 317	Pewter Gray
	4	2	DMC 318	Steel Gray-LT
	∩	2	DMC 413	Pewter Gray-DK
	3	2	DMC 414	Steel Gray-DK
	5	2	DMC 415	Pearl Gray
	⊠	2	DMC 451	Shell Gray-DK
	⊗	2	DMC 452	Shell Gray-MD
	e	2	DMC 453	Shell Gray-LT
	v	2	DMC 535	Ash Gray-VY LT
	✻	2	DMC 646	Beaver Gray-DK
	♠	2	DMC 647	Beaver Gray-MD
	*	2	DMC 648	Beaver Gray-LT
	<	2	DMC 762	Pearl Gray-VY LT
	▲	2	DMC 778	Antique Mauve-VY LT
	9	2	DMC 838	Beige Brown-VY DK
	//	2	DMC 928	Gray Green-VY LT
	1	2	DMC 931	Antique Blue-MD
	\$	2	DMC 3024	Brown Gray-VY LT
	7	2	DMC 3033	Mocha Brown-VY LT
	⊗	2	DMC 3042	Antique Violet-LT
	⊕	2	DMC 3072	Beaver Gray-VY LT
	●	2	DMC 3371	Black Brown
	8	2	DMC 3687	Mauve
	⊗	2	DMC 3713	Salmon-VY LT
	↶	2	DMC 3726	Antique Mauve-DK
		2	DMC 3727	Antique Mauve-LT
	⊕	2	DMC 3740	Antique Violet-DK
	n	2	DMC 3743	Antique Violet-VY LT
	@	2	DMC 3799	Pewter Gray-VY DK
	↶	2	DMC 3802	Antique Mauve-VY DK
	#	2	DMC 3803	Mauve-MD
	⊗	2	DMC 3834	Grape-DK
	♥	2	DMC 3835	Grape-MD
	■	2	DMC 3836	Grape-LT
	6	2	DMC 3860	Cocoa
	⊕	2	DMC 3861	Cocoa-LT
	↶	2	DMC 3865	Winter White
	■	2	DMC 3866	Mocha Brown-UL VY LT

Notes:

Copyright Artecy Cross Stitch. All rights Reserved.

The middle of this pattern can be found on page 5 and is 83 stitches across and 101 stitches down.

Pattern layout using page numbers in top left.

1 2 3

4 5 6

7 8 9

Usage Summary

Strands Per Skein: 6

Skein Length: 313.0 in

Type	Number	Full	Half	Quarter	Petite	Back(in)	Str(in)	Spec(in)	French	Bead	Skein Est.
DMC 169	803	0	0	0	0	0.0	0.0	0.0	0	0	1.000
DMC 310	996	0	0	0	0	0.0	0.0	0.0	0	0	1.000
DMC 315	35	0	0	0	0	0.0	0.0	0.0	0	0	1.000
DMC 316	43	0	0	0	0	0.0	0.0	0.0	0	0	1.000
DMC 317	202	0	0	0	0	0.0	0.0	0.0	0	0	1.000
DMC 318	2003	0	0	0	0	0.0	0.0	0.0	0	0	1.000
DMC 413	100	0	0	0	0	0.0	0.0	0.0	0	0	1.000
DMC 414	516	0	0	0	0	0.0	0.0	0.0	0	0	1.000
DMC 415	1432	0	0	0	0	0.0	0.0	0.0	0	0	1.000
DMC 451	193	0	0	0	0	0.0	0.0	0.0	0	0	1.000
DMC 452	26	0	0	0	0	0.0	0.0	0.0	0	0	1.000
DMC 453	33	0	0	0	0	0.0	0.0	0.0	0	0	1.000
DMC 535	33	0	0	0	0	0.0	0.0	0.0	0	0	1.000
DMC 646	64	0	0	0	0	0.0	0.0	0.0	0	0	1.000
DMC 647	213	0	0	0	0	0.0	0.0	0.0	0	0	1.000
DMC 648	882	0	0	0	0	0.0	0.0	0.0	0	0	1.000
DMC 762	3216	0	0	0	0	0.0	0.0	0.0	0	0	2.000
DMC 778	76	0	0	0	0	0.0	0.0	0.0	0	0	1.000
DMC 838	14	0	0	0	0	0.0	0.0	0.0	0	0	1.000
DMC 928	258	0	0	0	0	0.0	0.0	0.0	0	0	1.000
DMC 931	7597	0	0	0	0	0.0	0.0	0.0	0	0	4.000
DMC 3024	1274	0	0	0	0	0.0	0.0	0.0	0	0	1.000
DMC 3033	25	0	0	0	0	0.0	0.0	0.0	0	0	1.000
DMC 3042	175	0	0	0	0	0.0	0.0	0.0	0	0	1.000
DMC 3072	1235	0	0	0	0	0.0	0.0	0.0	0	0	1.000
DMC 3371	273	0	0	0	0	0.0	0.0	0.0	0	0	1.000
DMC 3687	17	0	0	0	0	0.0	0.0	0.0	0	0	1.000
DMC 3713	25	0	0	0	0	0.0	0.0	0.0	0	0	1.000
DMC 3726	45	0	0	0	0	0.0	0.0	0.0	0	0	1.000
DMC 3727	61	0	0	0	0	0.0	0.0	0.0	0	0	1.000
DMC 3740	30	0	0	0	0	0.0	0.0	0.0	0	0	1.000
DMC 3743	164	0	0	0	0	0.0	0.0	0.0	0	0	1.000
DMC 3799	165	0	0	0	0	0.0	0.0	0.0	0	0	1.000
DMC 3802	25	0	0	0	0	0.0	0.0	0.0	0	0	1.000
DMC 3803	61	0	0	0	0	0.0	0.0	0.0	0	0	1.000
DMC 3834	68	0	0	0	0	0.0	0.0	0.0	0	0	1.000
DMC 3835	26	0	0	0	0	0.0	0.0	0.0	0	0	1.000
DMC 3836	68	0	0	0	0	0.0	0.0	0.0	0	0	1.000
DMC 3860	26	0	0	0	0	0.0	0.0	0.0	0	0	1.000
DMC 3861	176	0	0	0	0	0.0	0.0	0.0	0	0	1.000
DMC 3865	8803	0	0	0	0	0.0	0.0	0.0	0	0	4.000
DMC 3866	1323	0	0	0	0	0.0	0.0	0.0	0	0	1.000